



Site Plan of Campus



**Narrative Summary**

Will C. Wood Middle School; one of the District's Priority Schools was constructed in 1961. The site is just under 19 acres in a fully developed neighborhood and adjacent, on the east side, to 65th Street Expressway.

In the Summer of 2010 the District's staff provided a series of facility improvements; including but not limited to: asphalt repair, carpentry repairs to buildings, drapes repair/replacement, hardwood floor repair/replacement, HVAC filter replacements, landscaping, paint, plumbing repair, security cameras and window repair.

The school's design is shared by four other schools in the district and is in generally fair condition. Designed for an enrollment of 800 it currently serves 771 students.

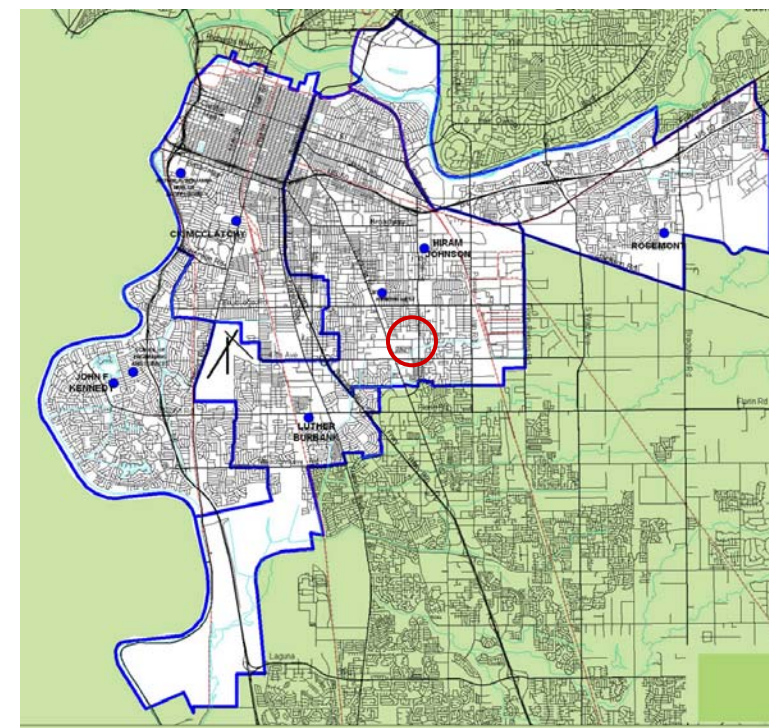
There are no designated passenger loading and unloading zones. Drop offs currently take place along the Lemon Hill Ave. frontage and in the staff parking lot. Both locations generate traffic conflicts and unsafe conditions. There have been recent upgrades for paving and striping to the parking lot and service drives. Some path of travel upgrades have been made but more are needed.

About 20% of the permanent classrooms are on the second floor and served by a single ramp and two stairways. Nine of the 49 classrooms are in portables. As with other schools of the period, the fifty year old school was built with little consideration for energy efficiency. Some of Building "E", previously used as Industrial Arts studies has been converted to serve other needs including storage and classrooms. The school has undergone other improvements but most areas still need considerable upgrades for CBC Access Compliance and to meet contemporary educational needs.

The student gathering areas of the campus are primarily associated with the "Quad" which is adequate for school gatherings and in reasonably good condition. Other outdoor student areas include landscape planters, some with benches, between classroom buildings. The large ramp however, in the court between classroom wings, has created concerns for safety and visibility in the core area. The need for cameras to monitor the area behind the gym building and around the portables has also been noted. Some covered walk roofs are leaking and rainwater flowing from the roofs create large, hazardous puddles on the walks. Water drainage is also an issue adding to the problem.



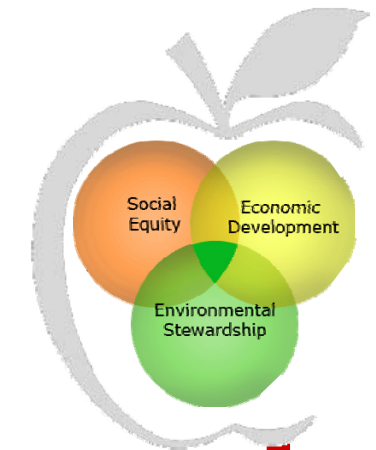
Campus Entry



School Location Legend

The athletic fields and paved play courts are adequate for the current enrollment but in fair condition.

Based on the opportunities, facility conditions and code issues identified in this report, Will C. Wood Middle School appears to be in generally fair condition and should be a solid candidate for further modernization.



'Student Centered Education'

School Mission Statement

Success For Every Student

"Students actively preparing to become academically and socially capable of meeting the challenges of the 21<sup>st</sup> century."


SACRAMENTO CITY UNIFIED SCHOOL DISTRICT  
Sustainable Facilities Master Plan

June 2012







 **Sustainable Sites School Entry/Drop Off**  
No designated bus or parent drop off. Parent drop off in staff parking lot with congestion & conflicts. No barrier free drop off space or path of travel.




 **Sustainable Sites Outdoor Activity**  
Poor surface condition poses safety risk



 **Sustainable Sites Campus Core**  
Ample space but uninviting without shade. Concrete walks and surfaces are uneven and broken.



 **Water Efficiency Exterior**  
Upgraded irrigation and drought tolerant planting should be incorporated for water conservation.




 **Water Efficiency Interior**  
Replace old fixtures & fittings with new efficient low flow fixtures that are barrier free access compliant.




 **Energy & Atmosphere**  
Upgrade or replace older energy management system to include all rooms, door/window interlocks and plug load controls.




 **Materials & Resources Exterior**  
Standing water on roofs due to inadequate slopes and drainage.



 **Materials & Resources Interior**  
Areas with patched tile and other materials and finishes should be re-surfaced with new material.



 **Indoor Environmental Quality**  
Replace casework, fixtures and fittings to meet barrier free access code.

## High Performance Transformation

### Leadership, Education & Innovation

Encourage innovation in high performance school design creating safe, motivating and sustainable learning environments that reduce dependence on non-sustainable resources.

### Sustainable Sites

Create safe, barrier free outdoor learning environments incorporating efficient and effective storm water management, landscaping, lighting and surfaces.

### Water Efficiency

Improve the efficiency of fixtures, appliances and irrigation systems to reduce domestic water usage.

### Energy & Atmosphere

Optimize energy efficiency and performance to minimize environmental impacts and reduce operating costs associated with fossil fuels.

### Materials & Resources

Improve the learning environment and extend the life-cycle of facilities while encouraging the use of efficient sustainable materials and reducing waste.

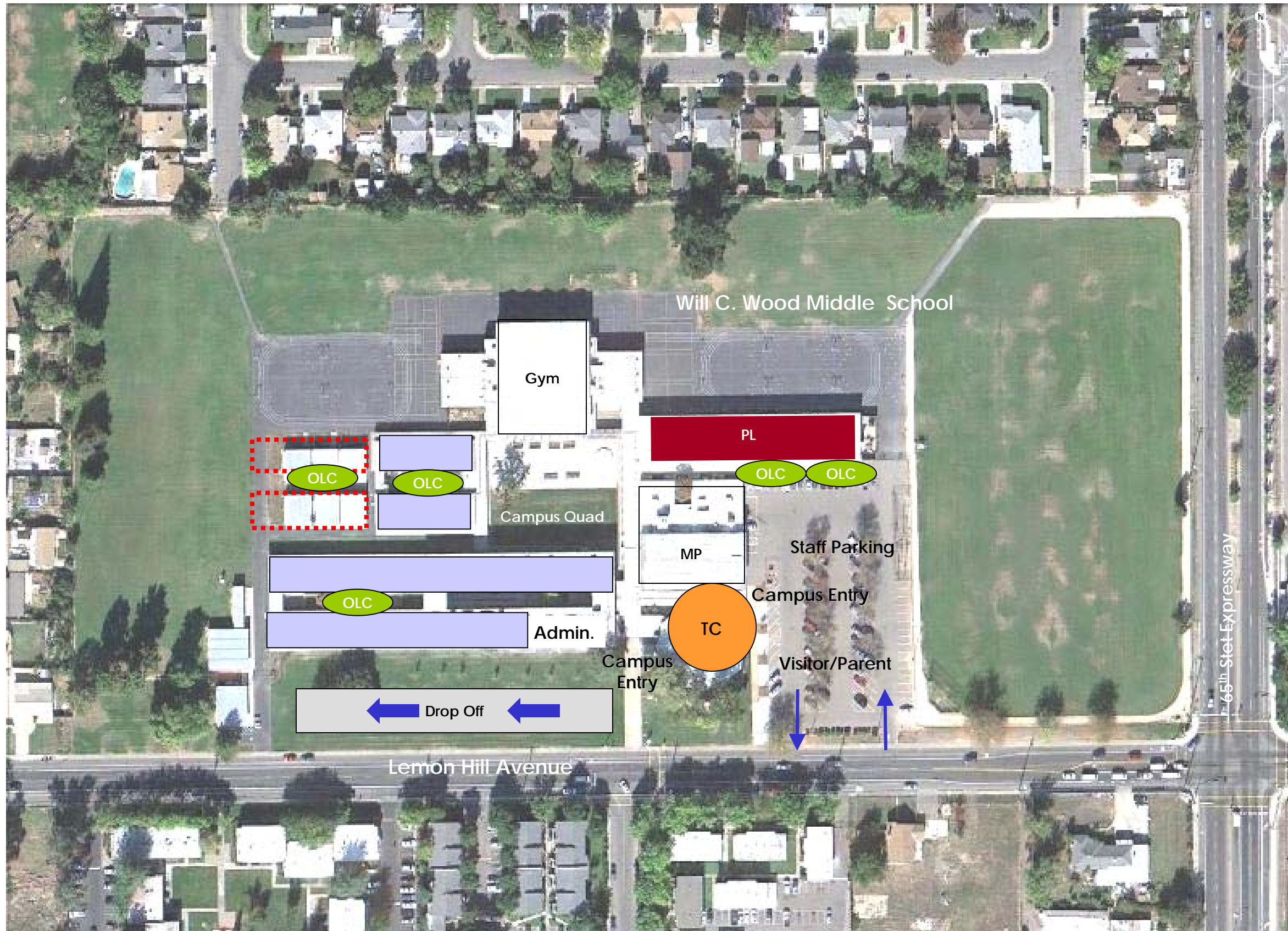
### Indoor Environmental Quality

Enhance air quality, thermal comfort, natural light, acoustic performance and physical environments while reducing pollutants. Provide a safe, healthy, functional environment to help motivate students and encourage attendance.

SACRAMENTO CITY  
UNIFIED SCHOOL DISTRICT  
Sustainable Facilities Master Plan

June 2012





**'Student Centered Education'**

The following is a site organizational concept of Will C. Wood Middle School to implement the *Strategic Plan 2010-2014: Putting Children First* and the Common Core Standards.

**SAFE & WELCOMING SCHOOL**

- Dedicated Drop-Off
- Visitor/Staff Parking
- Outdoor Learning Courts.

**CAREER & COLLEGE READY**

**Academic Pathway Transformation (46,268 s.f.)**

- Grades 7 & 8 Classroom Houses, Includes Core Academic, Learning Labs; Science & Technology Labs & Teacher Planning Centers.

**Specialized Learning Lab Transformation**

- Project Labs (PL), Art/Music/Tech.

**Support** Support Spaces – distributed

**FAMILY & COMMUNITY ENGAGEMENT**

**Technology Center (TC) Transformation (6,079 s.f.)**

- Media Center, Computer Lab Parent Center & Conference Room and Teacher Planning Center.

**Multi-Purpose (MP) Gym**

**ORGANIZATIONAL TRANSFORMATION**

**Classroom Conversion / Expansion (8,400 s.f.)**

- Portable to Permanent and CR Expansion to meet optimized Campus Capacity Goals

SACRAMENTO CITY  
UNIFIED SCHOOL DISTRICT  
Sustainable Facilities Master Plan

June 2012

Site Plan of Campus



### School Site Facility(s) Needs

The following list was provided by the school's principal which was generated from school site council and community meetings:

- More school security
- Art class
- Security cameras
- School gates modified to prevent access to roof tops and to prevent vandalism
- Gym bleachers refurbished (electrical bleachers are needed)
- More hand dryers for student bathrooms
- Lighting - type of lighting and how they turn on/off
- More lights on campus and fields

### Schools as Teaching Tools

	Code, Life Safety & Access	Maintenance & Operations	High Performance Transformation	Sustainable Category Total
Sustainable Sites	\$ 417,950	\$ 1,397,370	\$ 4,208,360	\$ 6,023,680
Water Efficiency	\$ 16,770	\$ 8,190	\$ 118,560	\$ 143,520
Energy & Atmosphere	\$ 0	\$ 910	\$ 317,200	\$ 318,110
Materials & Resources	\$ 377,650	\$ 2,055,950	\$ 1,804,660	\$ 4,238,260
Indoor Environmental Quality	\$ 81,380	\$ 833,690	\$ 608,270	\$ 1,523,340
Leadership, Education & Innovation	\$ 0	\$ 0	\$11,686,610	\$11,686,610

**Assessment Total** \$ 893,750 \$ 4,296,110 \$18,743,660 \$23,933,520

Cost Summary reflects Total Project Cost Estimate, inclusive of Construction Cost and Soft Cost

### Project Cost Summary Matrix

### CHPS Summary

*Collaborative for High Performance Schools*

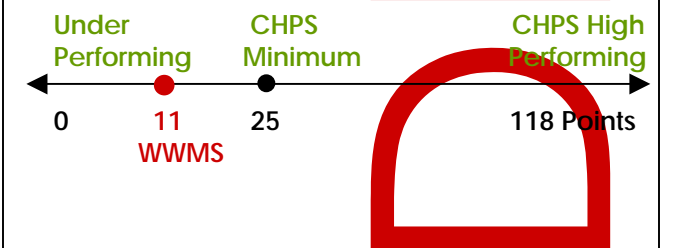
Supports the idea that " a well-designed facility can truly enhance performance and make education more enjoyable and rewarding...and a productive learning experience."

In accordance with the Green and Grid Neutral Model Schools Policy Initiative-BP 3511and Resolution No. 2583; Adopting the Collaborative for High Performing Schools (CHPS) Criteria, the following summary characterizes how the Schools align with the Best Practices Criteria.



#### SUMMARY by CHPS Categories

	Eligible Points	Actual Points
Leadership, Education & Innovation	13	1
Sustainable Sites	14	5
Water Efficiency	9	0
Energy & Atmosphere	29	1
Climate	10	
Materials & Resources	18	2
Indoor Environmental Quality	23/25	2
<b>TOTAL</b>	<b>118</b>	<b>11</b>



### Campus Assessment Summary

#### Sustainable Sites

- School Entry & Drop-off
- Parking & Drives
- Service Access
- Outdoor Activity
- Campus Core
- Utilities & Infrastructure

#### Water Efficiency

- Site Utilities & Infrastructure
- Plumbing Systems
- Specialty Systems
- Fire Protection Systems

#### Energy & Atmosphere

- Central Plant
- HVAC Systems
- Specialty Systems
- Alternative Energy Systems

#### Materials & Resources

- Signage
- Door Hardware
- Interior Space
- Exterior Finish

#### Indoor Environmental Quality

- Electrical Systems
- Lighting Systems
- Technology Systems
- Low Voltage Systems

#### Leadership, Education & Innovation

- Career & College Ready
- Family & Community Engagement
- Organizational Transformation

SACRAMENTO CITY  
UNIFIED SCHOOL DISTRICT  
Sustainable Facilities Master Plan  
June 2012