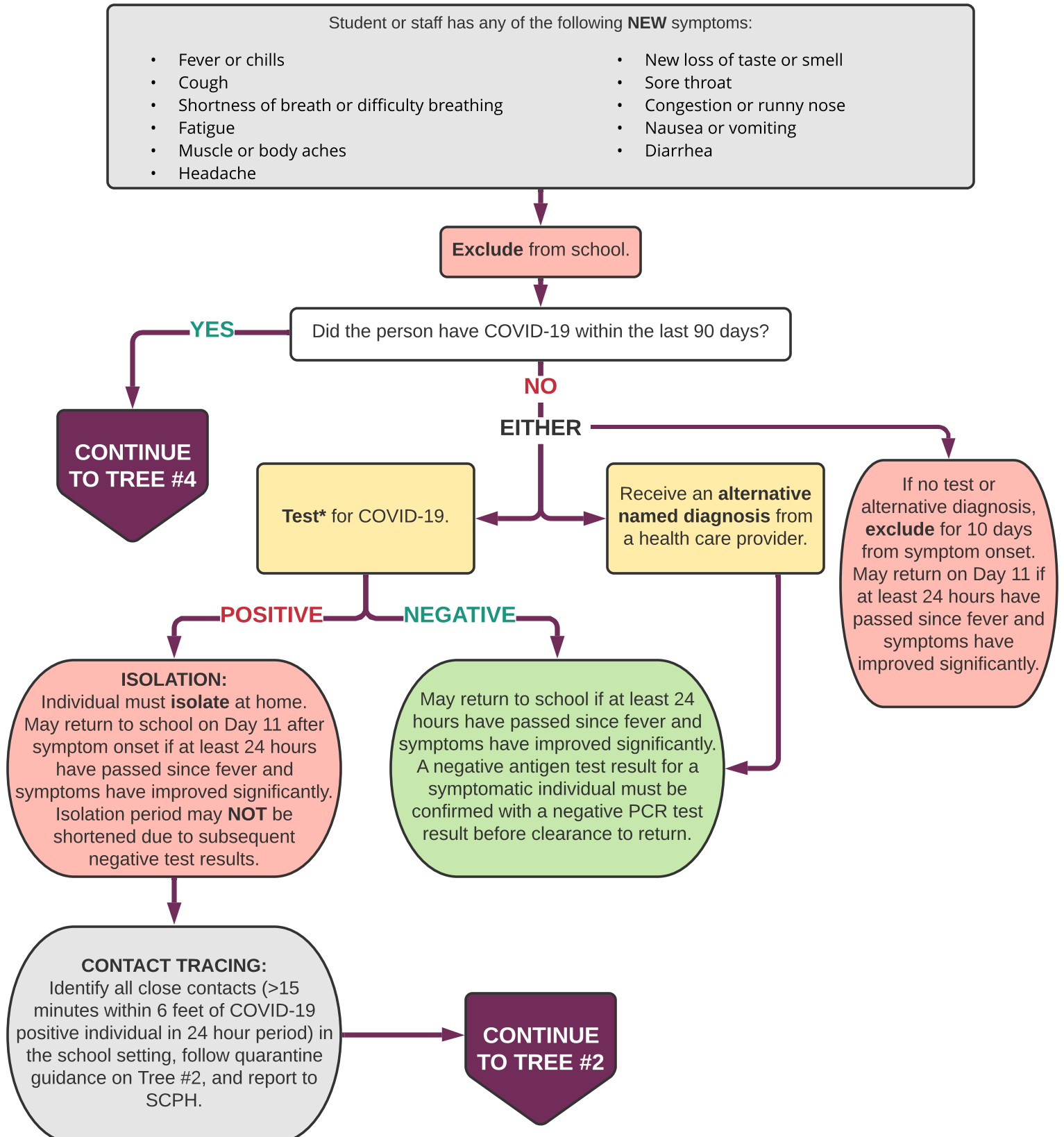


# COVID-19 Symptom & Quarantine Decision Forest for K-12 Schools

The Decision Forest is based on guidance from the California Department of Public Health and local recommendations from Sacramento County Public Health. It is updated regularly to align with evolving guidance. Schools should ensure they are using the latest version and discard all previous versions. The Decision Forest provides general guidance for common scenarios, but cannot account for every possible situation. Schools requiring technical assistance can contact the SCPH Schools Team for guidance at [SCPHschools@saccounty.net](mailto:SCPHschools@saccounty.net).

## TREE #1: STUDENT OR STAFF WITH SYMPTOMS

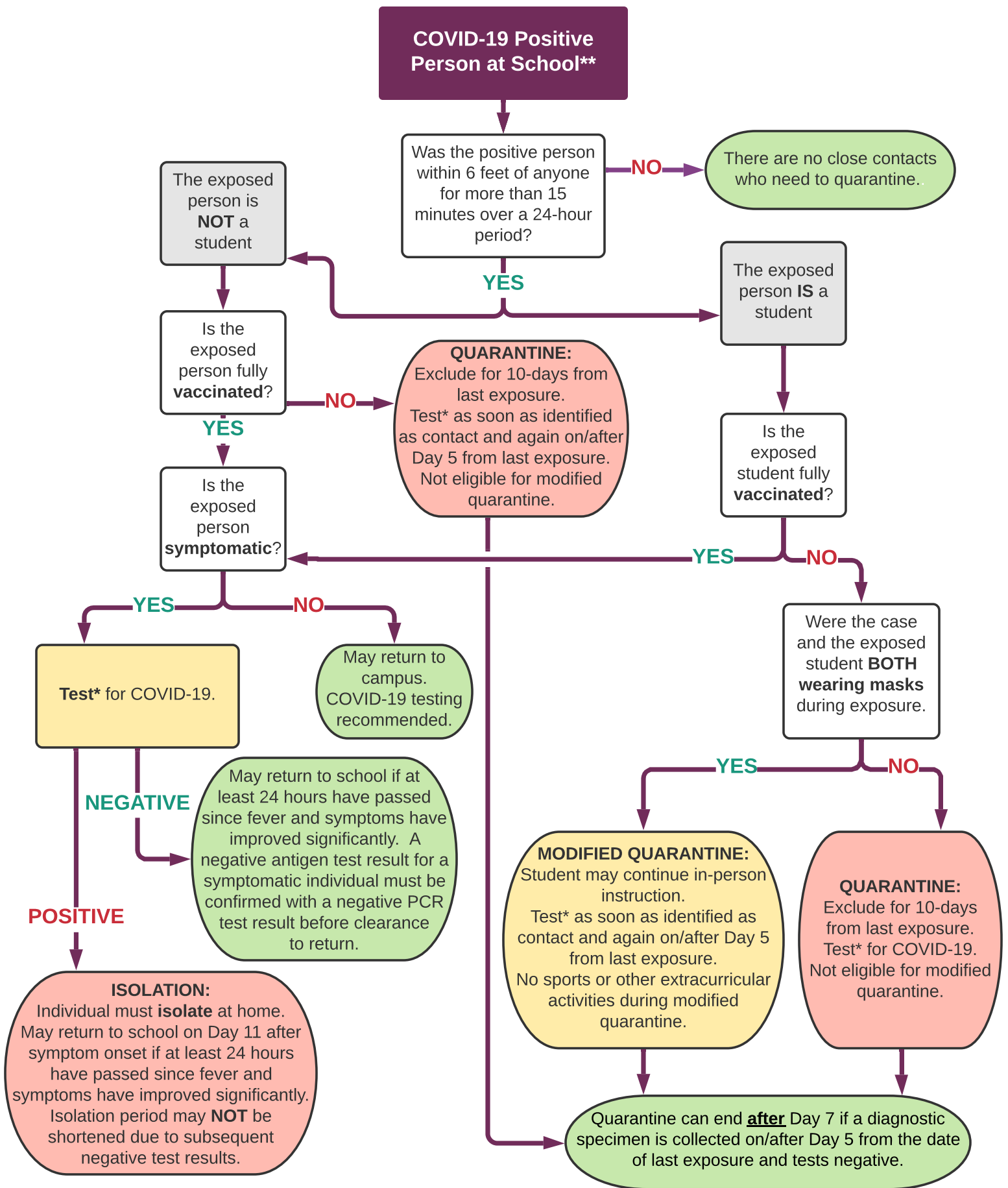


\* PCR or rapid antigen testing are acceptable testing methods. Negative rapid antigen test on symptomatic patient must be confirmed with PCR.

\*\* School setting in which students are supervised by school staff, including indoor or outdoor school settings and school buses.

October 20, 2021

## TREE #2: COVID-19 POSITIVE PERSON AT SCHOOL\*\*



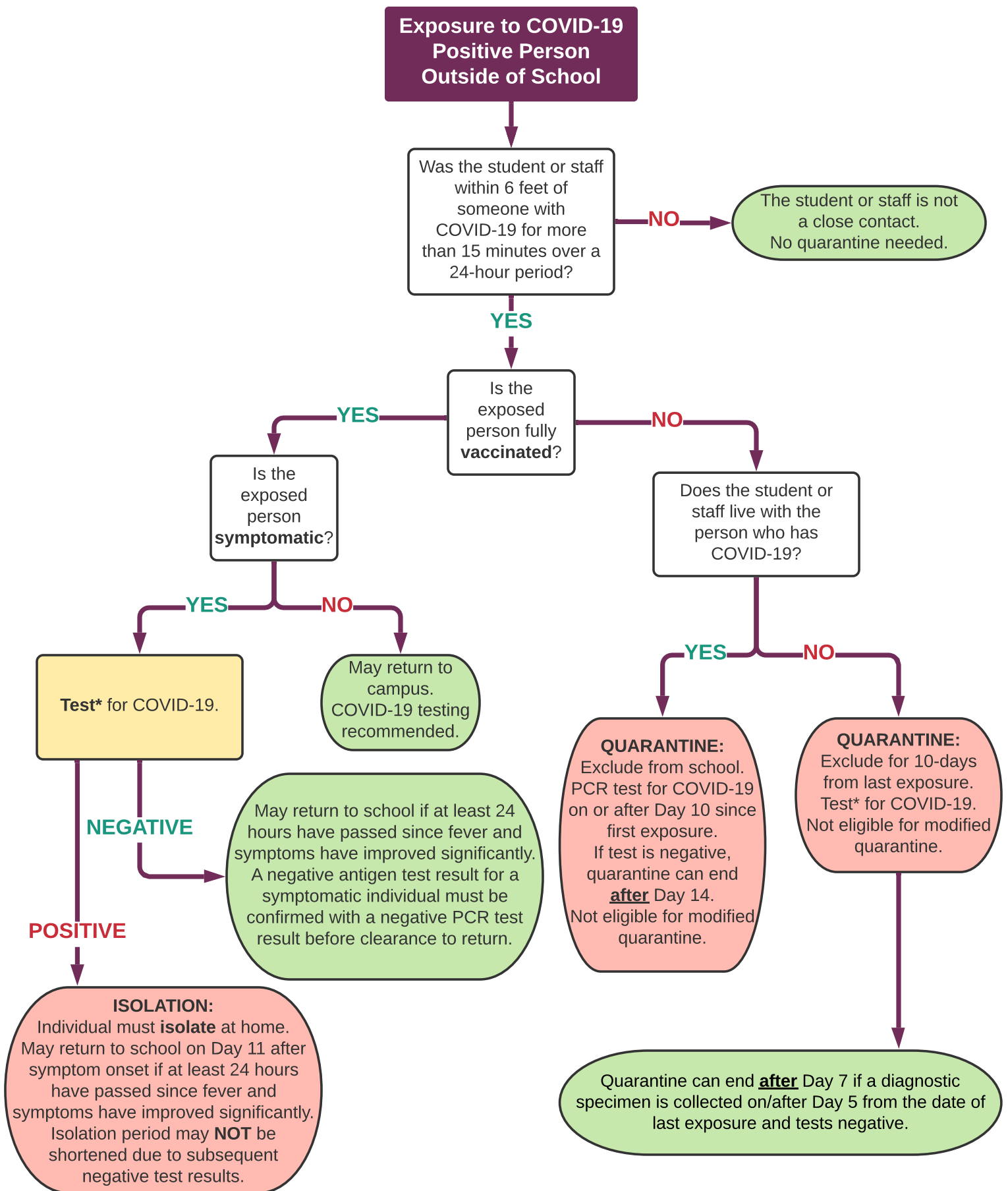
\* PCR or rapid antigen testing are acceptable testing methods. Negative rapid antigen test on symptomatic patient must be confirmed with PCR.

\*\* School setting in which students are supervised by school staff, including indoor or outdoor school settings and school buses.

**Please note:** Asymptomatic individuals who had COVID-19 in the past 90 days do not need to quarantine if identified as a close contact.

October 20, 2021

## TREE #3: COVID-19 POSITIVE EXPOSURE OUTSIDE OF SCHOOL



\* PCR or rapid antigen testing are acceptable testing methods. Negative rapid antigen test on symptomatic patient must be confirmed with PCR.

\*\* School setting in which students are supervised by school staff, including indoor or outdoor school settings and school buses.

**Please note:** Asymptomatic individuals who had COVID-19 in the past 90 days do not need to quarantine if identified as a close contact.

October 20, 2021

# TREE #4: PERSON WHO TESTED POSITIVE FOR COVID-19 IN PAST 90 DAYS

