



williams + paddon

ARCHITECTS + PLANNERS

The Firm

- Founded in 1981
- Locations in Roseville & Sacramento
- Architecture, Planning & Interior Design
- Public & Private Sector Clients
- Award-winning Designs
- Work spanning Western US & China



The Team



Cody Carpino, AIA
Principal in Charge

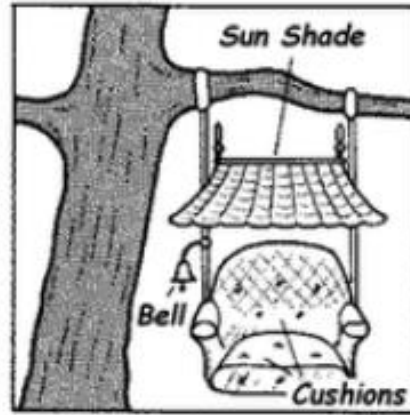


Anthony Herrera, AIA
Project Manager / Project Architect

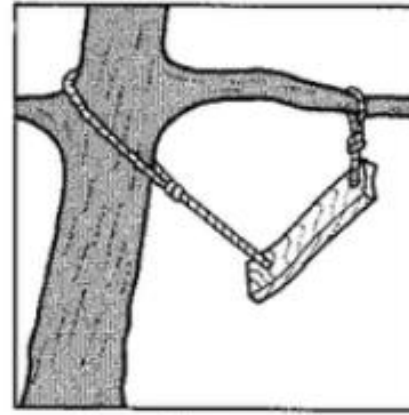


Krislyn Lounsbury, CID, LEED AP
Senior Interior Designer

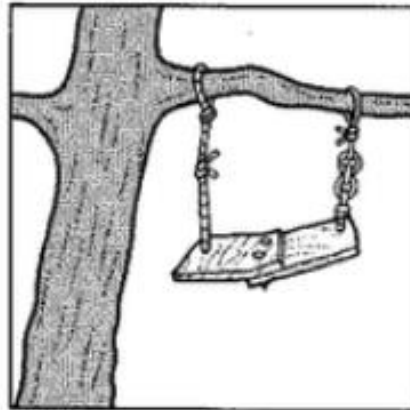
Communication



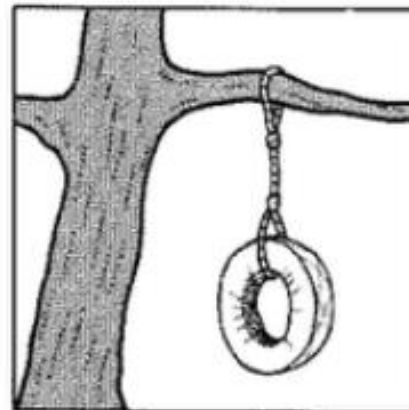
What sales promised



Pre-release version



General release version



*What the customer
actually wanted*

Approach

Listen to
Client
Needs

Budget
Conscious

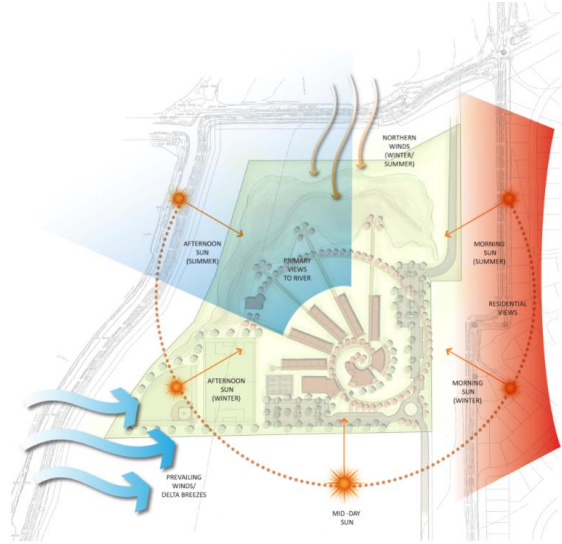
Design &
Visualization

Agency
Partnering

Quality
Assurance

Construction
Delivery

Sustainability



LEED Credit Categories



- It's Just Good Design!
- Environmental Site Context
- Net Zero or Carbon Neutral
- Passive First, Operational Second, Technology Third, and Renewables Fourth



WELL BUILDING STANDARD

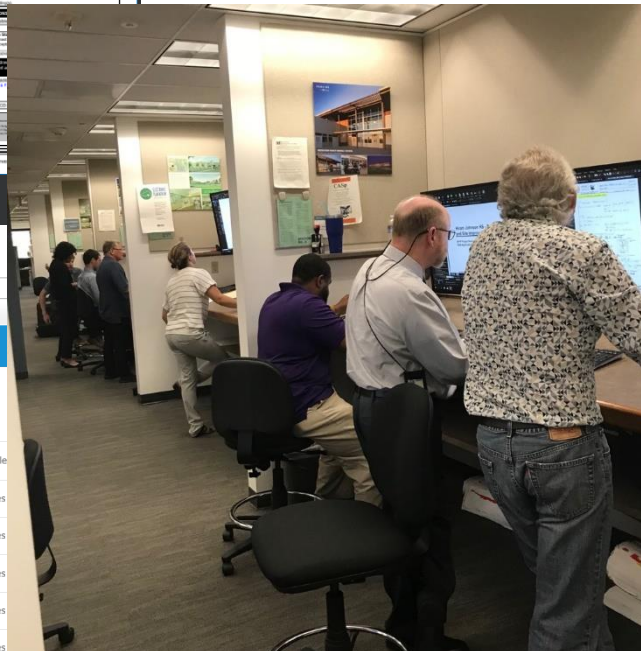
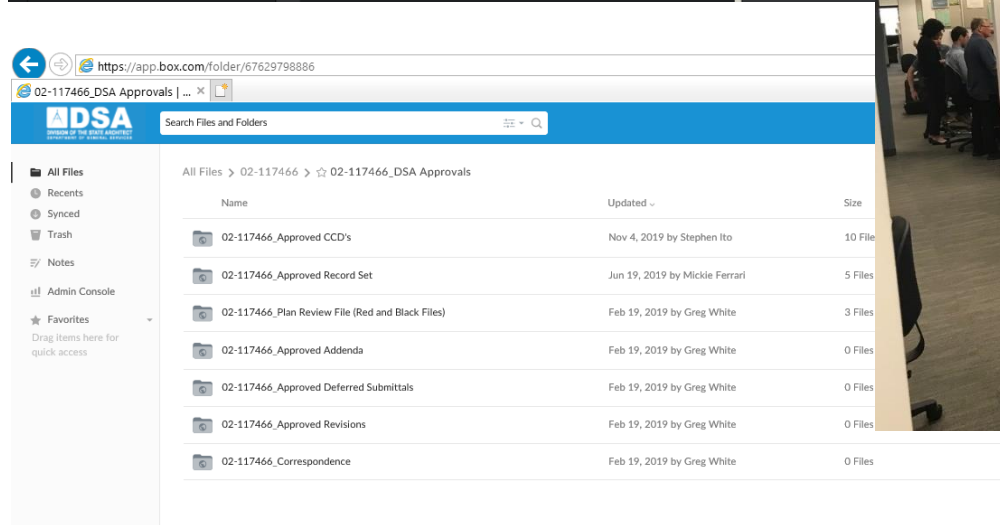
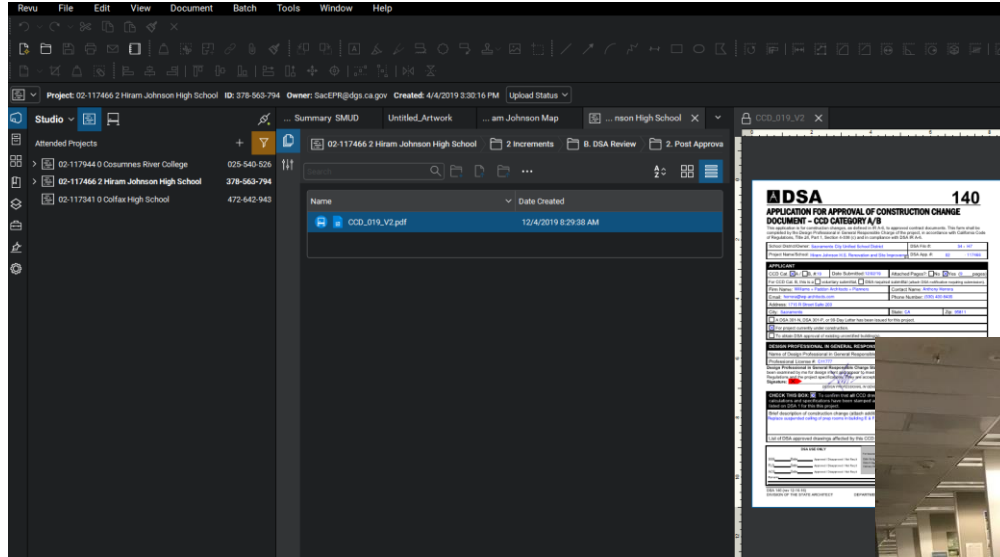


Campus Security

- Student Safety
- Defensible Campus
- Controlled Campus Access/Circulation

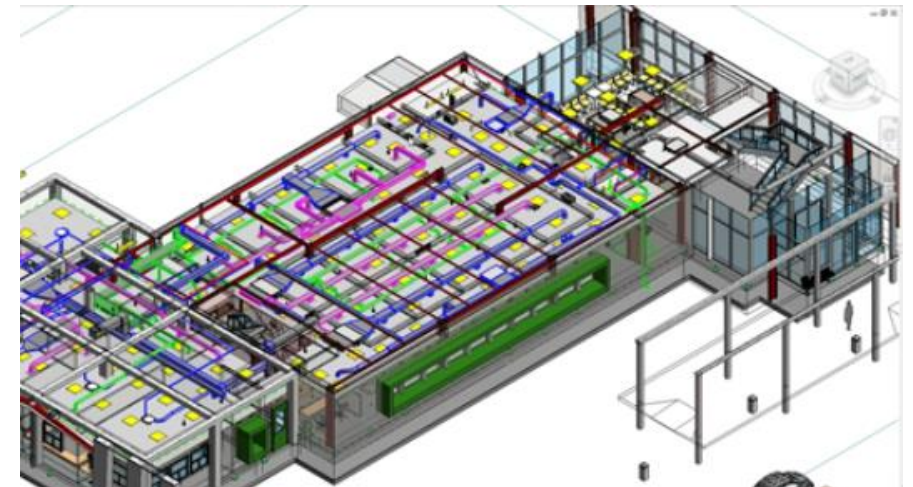
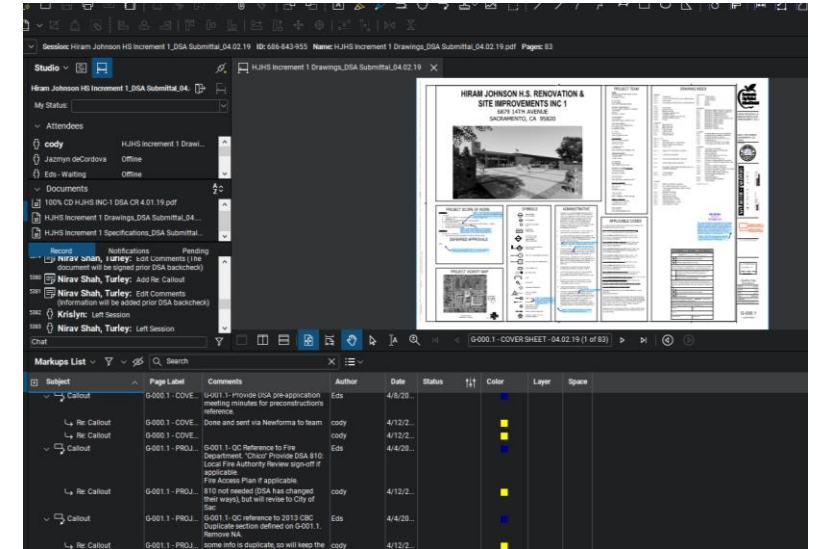


DSA / CDE / OPSC



BIM / Visualization through QC

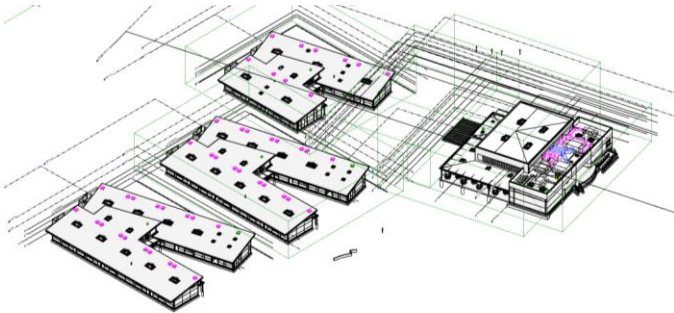
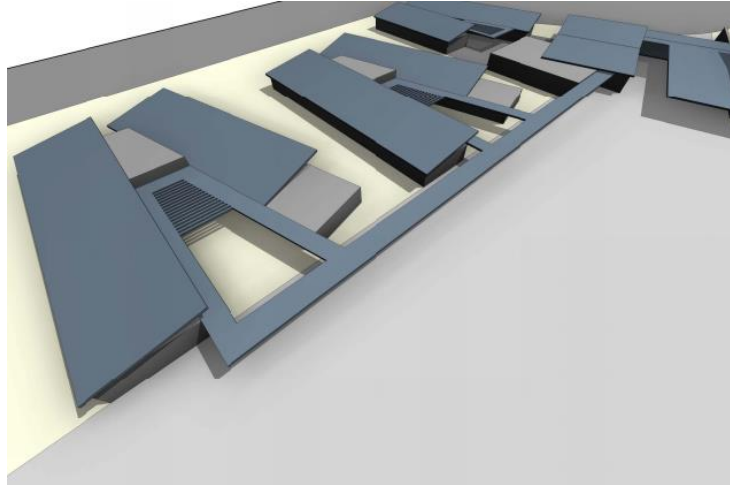
- Virtual Reality
- Building Information Modelling (BIM)
- Rendering Software
- Tiered Review Approach at each phase with 'fresh eyes'
- On-going review through process of design



Interior Environments



Star Academy Case Study



Roof / HVAC / Asphalt / Portables



Hiram Johnson High School Case Study





Growing Together!

