



Safety Update

Board Meeting
May 19, 2022
Agenda Item No. 8.3

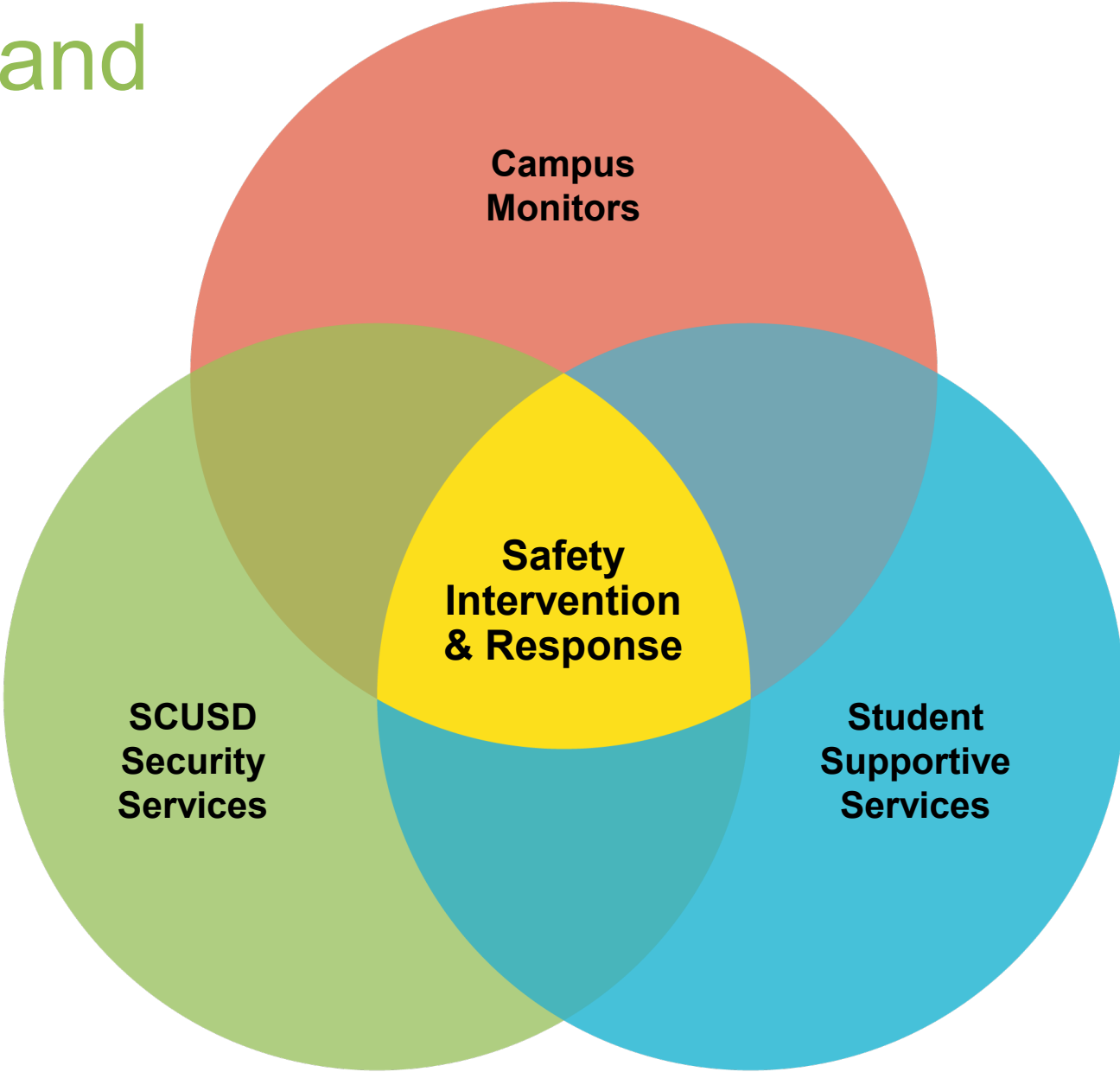
Presented by: Ray Lozada, Safe Schools Director



REIMAGINED

District-Led Safety and Intervention Team

Phase I 21-22



Re-Imagined Task Force Definition of “School Safety”

School should be a safe and happy place for students. It is filled with caring adults that will consistently respect and unconditionally love the children they serve without judgement. A place where the students’ mental health supersedes discipline. A place where students are treated with dignity and respect and misbehaviors are viewed as an opportunity for them to learn without punitive measures. A place where all students are ensured equal educational opportunities.

Re-Imagine School Safety Task Force

Recommendations

- 1. Get to the root of the issues involving Black students.** Board commit to a long term, “Brick by Brick” dismantling of systemic racism in addition to the “Arrest, Apprehension and Interrogation” policy.
- 2. Equity Manager:** A external (outside SCUSD oversight) position to manage and investigate the complaints and concerns of students and parents
- 3. Fiscal Manager:** A position to oversee SCUSD spending
- 4. Family and Student Support Centers that are focused on serving the region elementary – high school.** Making room for community organizations to contribute to meeting the needs of our student and family needs.
- 5. Each school site be allocated funding to develop their own safety process.**

21-22 School Year Structure

Safe Schools Director

SAFETY

Intervention/Prevention

- Student Supportive Services*
- GVS
- Community Organizations*
- Lead Campus Monitors

SAFETY

Operations

- Planning and Response
Coordination
- SCUSD Security
- Safety Officers



- Protocols
- Communication
- Training
- Dispatch
- Briefing
- Campus Monitors

Considerations

- Opportunity to develop a strategy utilizing all existing resources for safety strategy
- Strategies respective of the concerns and considerations conveyed throughout the Task Force process
- Funding

Safety Considerations

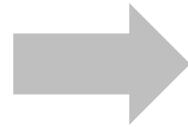
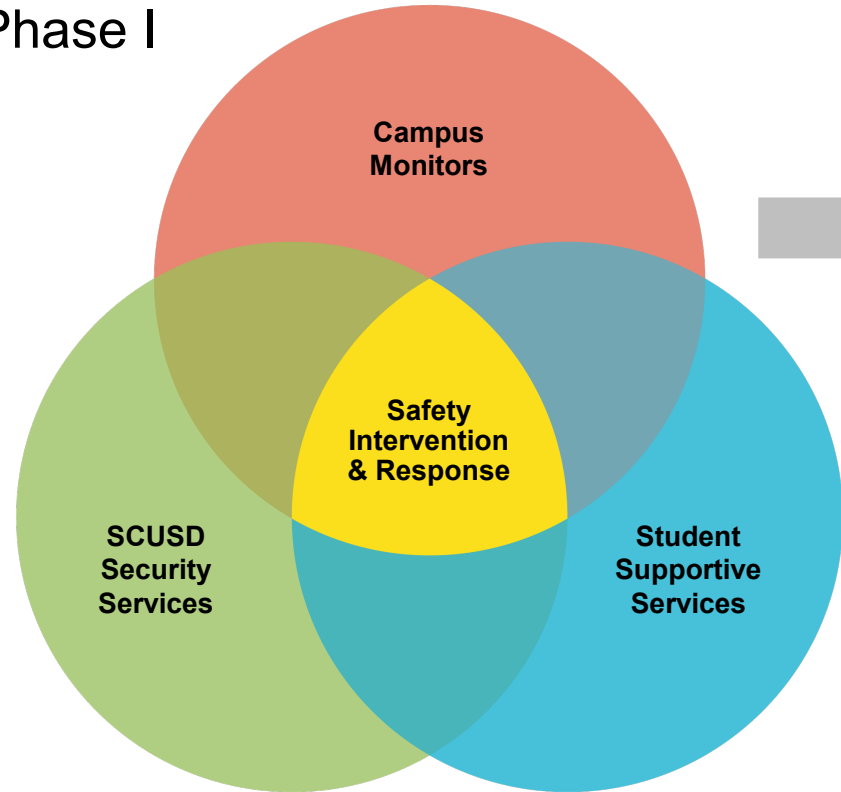
- Investigate and respond to crimes against students
- Mental health crisis/5150 assessment - Connection to M.H Services
- Respond to dangerous situations, i.e. suspected weapons)
- Supervision for large events
- Emergency communication and exchange of information

Partners in safety planning / Comprehensive School Safety Plans (CSSP)

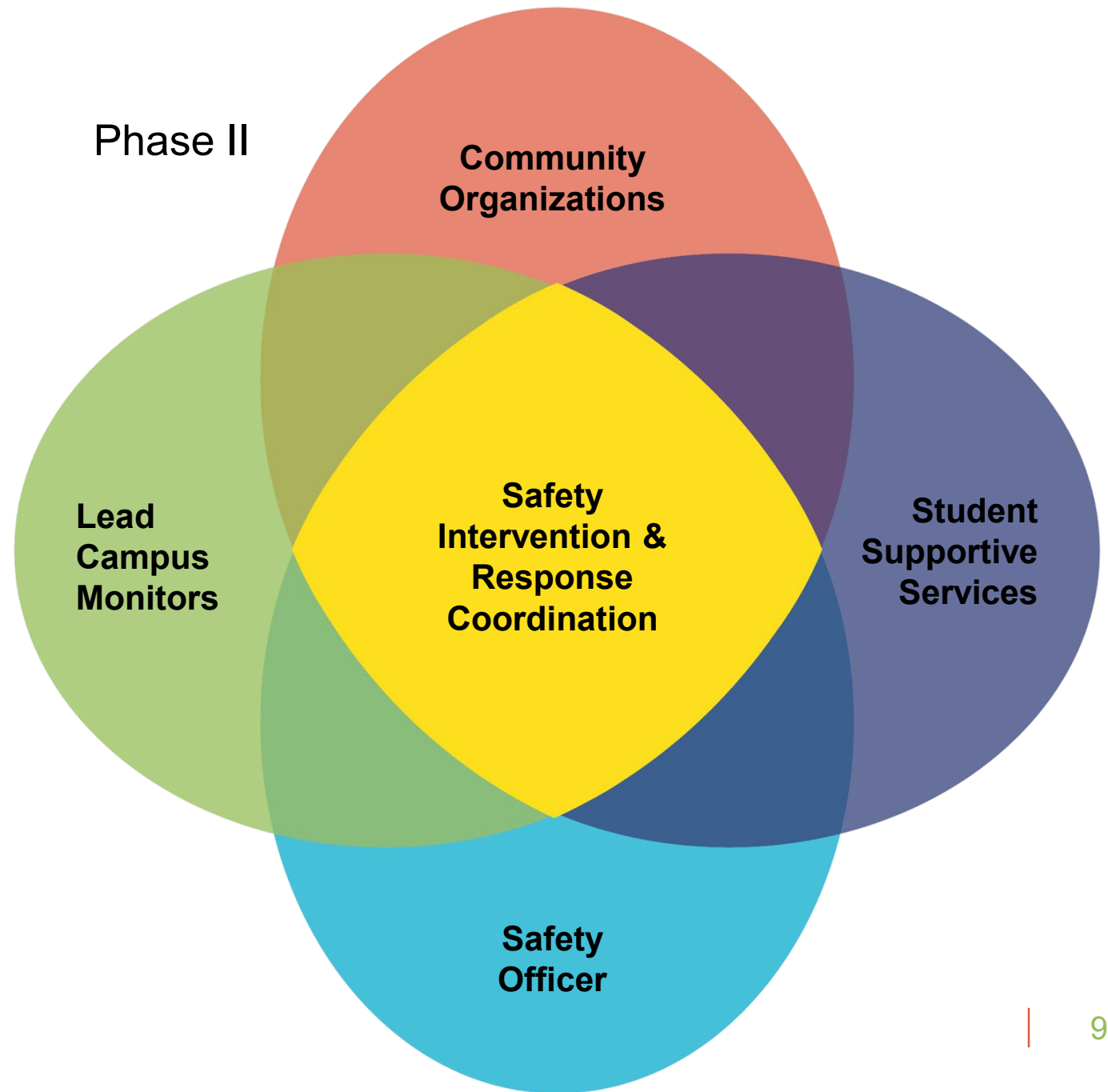
- Threats to school safety

District-Led Safety and Intervention Response

Phase I



Phase II



School Administrator Guidance

**Safety Intervention and Response Coordination (SIRC)

Who does Admin call if we need support?

Admin calls **(916) 549-6899** to access SCUSD SIRC nonviolent de-escalation supports, for example:

- Severely escalated student, causing harm or danger
- Student running away from campus and their safety is in jeopardy (elopement)
- Fight that school personnel cannot subdue unassisted
- Unwelcome outsider(s) who do not disrupt operations or do not pose a potential safety issue entering campus
- Need to issue stay away order
- Wellness Check
- Situation in the neighborhood that appears to involve police
- Any other situation requiring immediate nonviolent de-escalation supports or when you're not sure if a situation might require law enforcement

Important Numbers:

- Child Protective Services:
- Sacramento County Mobile Mental Health Crisis Team
- Sacramento Mobile Mental Health Crisis Team

When would Admin call the SPD / SSD non-emergency line?

Admin calls SPD (916) 264-5471
SSD (916) 874-5115

non-emergencies, for example:

- To dispose of contraband or large amounts illegal drugs (note: the names of students need not be disclosed to police for disposal)
- If a serious crime is believed to have taken place (but is not currently in progress)

If a parent demands that the police be called, provide them the number so they may call themselves, unless the situation is a mandatory school notification of law enforcement, in which case the school administrator may call (refer to list of when to call 911).

What if there's a mental health crisis?

- Admin should call site therapist, psychologist, social worker, or Student Supportive Services
- If student meets risk criteria, Admin contacts parent to request they transport student for assessment. If unable, call mobile crisis to conduct assessment

When would we call 911?

Call **911** whenever there is an imminent danger to someone's health or safety, for example:

- Bomb threat/discovery of a bomb
- Medical emergencies
- Fire
- Serious injury (e.g., resulting from suicide attempt, violence, accident, etc.)
- Drive-by shooting on school site
- Person shooting brandishing a gun or explosive
- Armed robbery or hostage situation
- Abduction/kidnapping (observed or suspected)
- Major violent crime in progress (e.g., sexual assault, attempted murder, etc.)
- Emergency building evacuation (e.g., fire, hazardous materials/fumes, gas leak, etc.)
- Any operational failure that puts lives in danger (e.g., broken water, steam or gas lines)
- Any other situation posing an imminent danger to someone's health or safety

If 911 is called and safe call Ray Lozada (916) 549-6899 Safe Schools Director

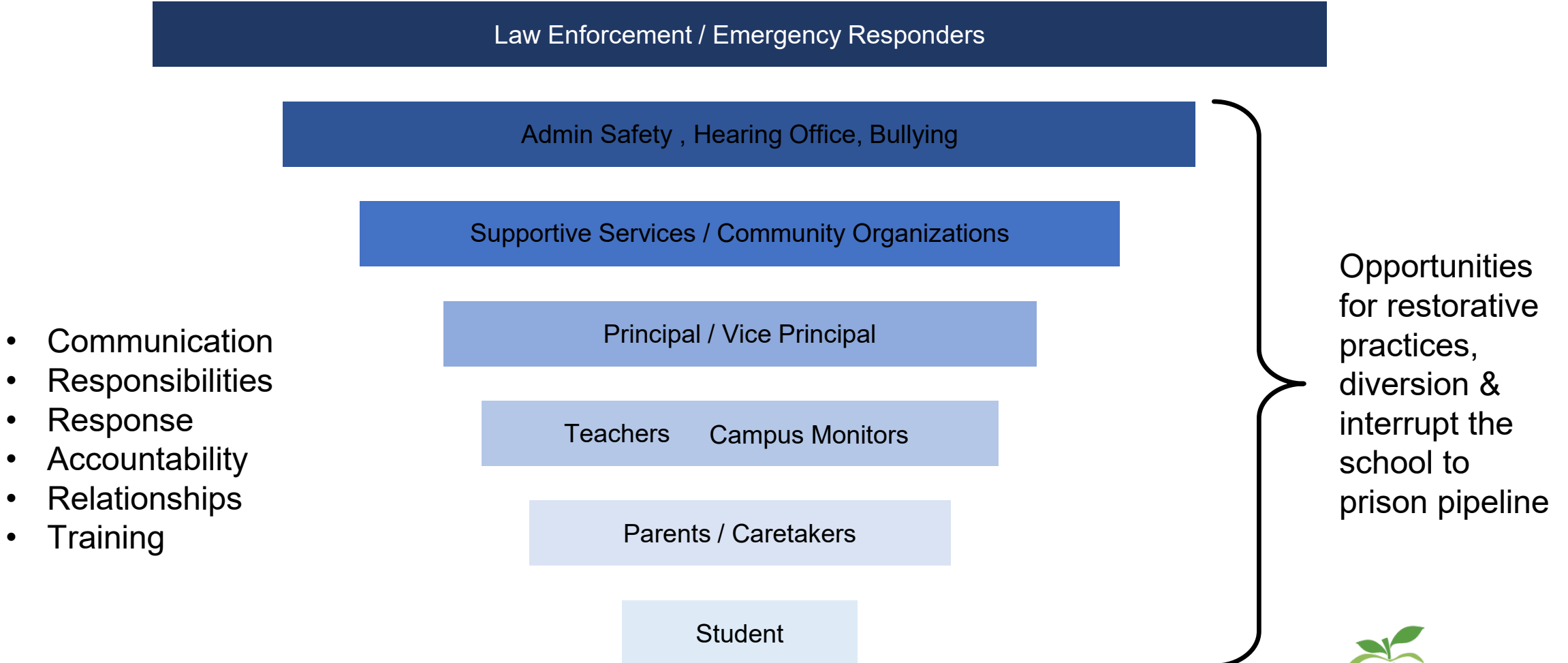
EMERGENCY AND CRISIS:

Response to stabilize physical harm / safety concerns that would impact students and staff, ultimately reducing the issue to “non emergency”.

NON-EMERGENCY:

District will coordinate resources to address these scenarios, adhering to due process, student / parent rights and mitigating liability.

Re-Imagine School Safety: Non - Emergency



Emergency and Crisis Response

Community Organizations

District Admin. Safety, Hearing Office, Bullying

Parents / Caretakers

Law Enforcement / Emergency Responders

Principal / Vice Principal

Teachers Campus Monitors

Student

- Communication
- Responsibilities
- Response
- Accountability
- Relationships
- Training



First to Respond
"On Site"

STUDENT SUPPORT SERVICES

- Mental Health
- Supportive Services
- Crisis Response

LEAD CAMPUS MONITORS

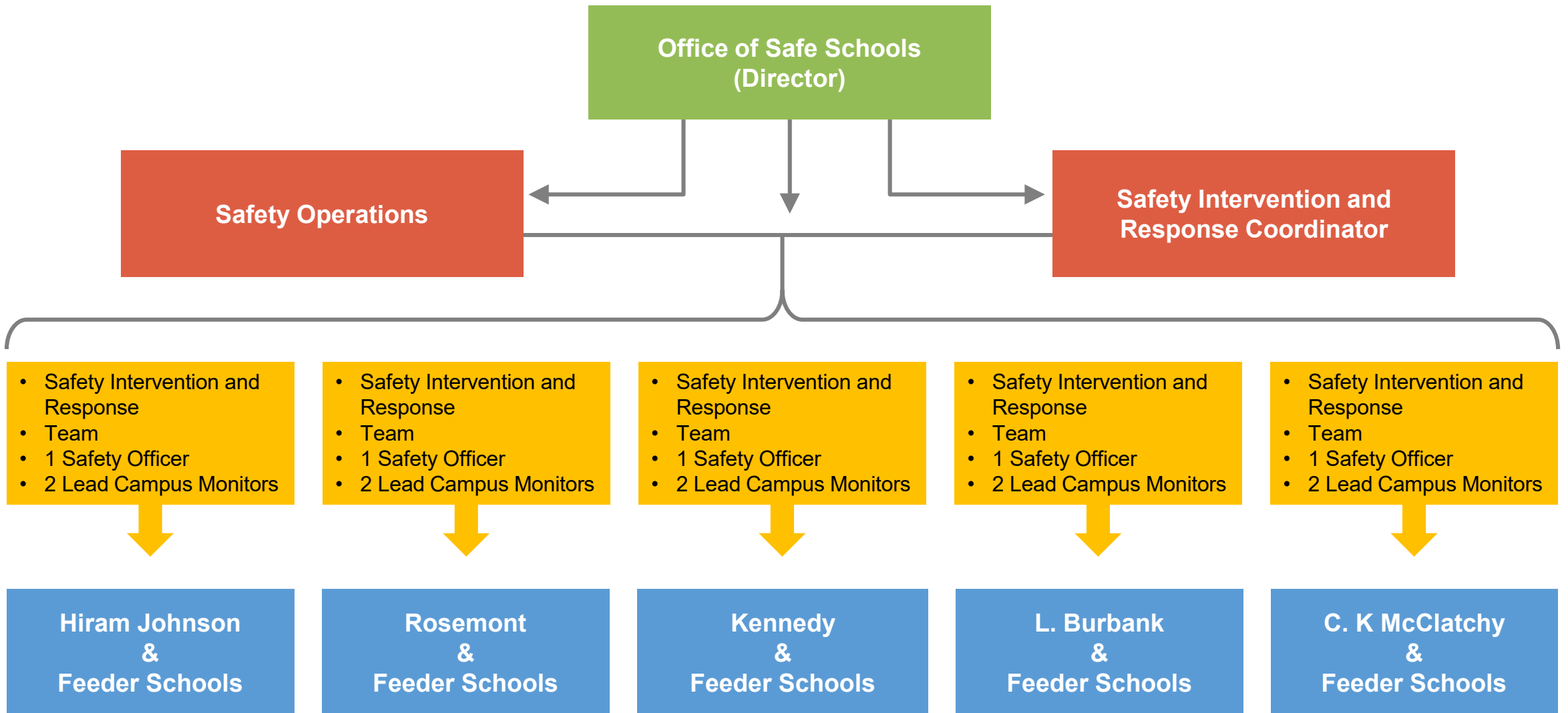
- Relationships with staff and students
- Two for each High School Campus and feeder schools
- Crisis Prevention Institute (CPI) Training

SAFETY OFFICERS

- Training
- Investigations
- School Site Support
- Camera Monitoring
- Evacuation
- Prevention and Intervention
- Comprehensive School Safety Plans

COMMUNITY-BASED ORGANIZATION

- Grass Roots
- Credible Messengers
- Lived Experience
- Adult Presence = Self Regulation
- Student Advocates



- Provides additional support at each school site level
- Provides an avenue for trying and professional development
- An investigative resources for crimes and investigation

- Serve as a liaison for law enforcement in each jurisdiction
- Safe Schools to be in position for early intervention and prevention
- Provides district-level mobilization onto intervene and respond to crisis

Coordination at Hiram Johnson



Crisis Prevention Institute Training



Safety Considerations - Phase II

- Investigate and respond to student related crimes and safety concerns
- Mental Health – Crisis Intervention
- Respond to Dangerous situations, i.e. suspected weapons
- Supervision for large events
- Partners in safety planning / Comprehensive School Safety Plans (CSSP)
- Assess and investigate threats to school safety.

Q & A