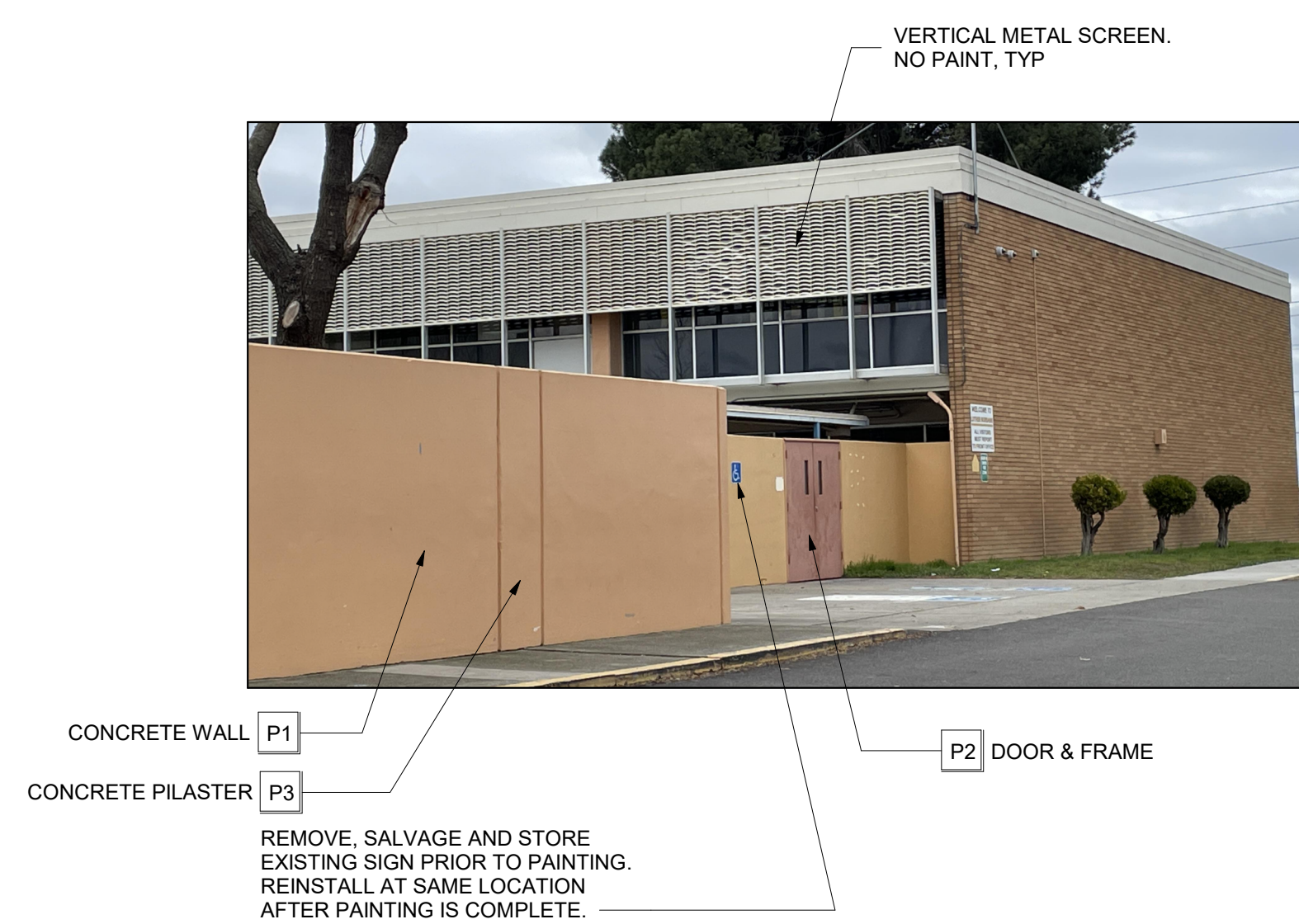
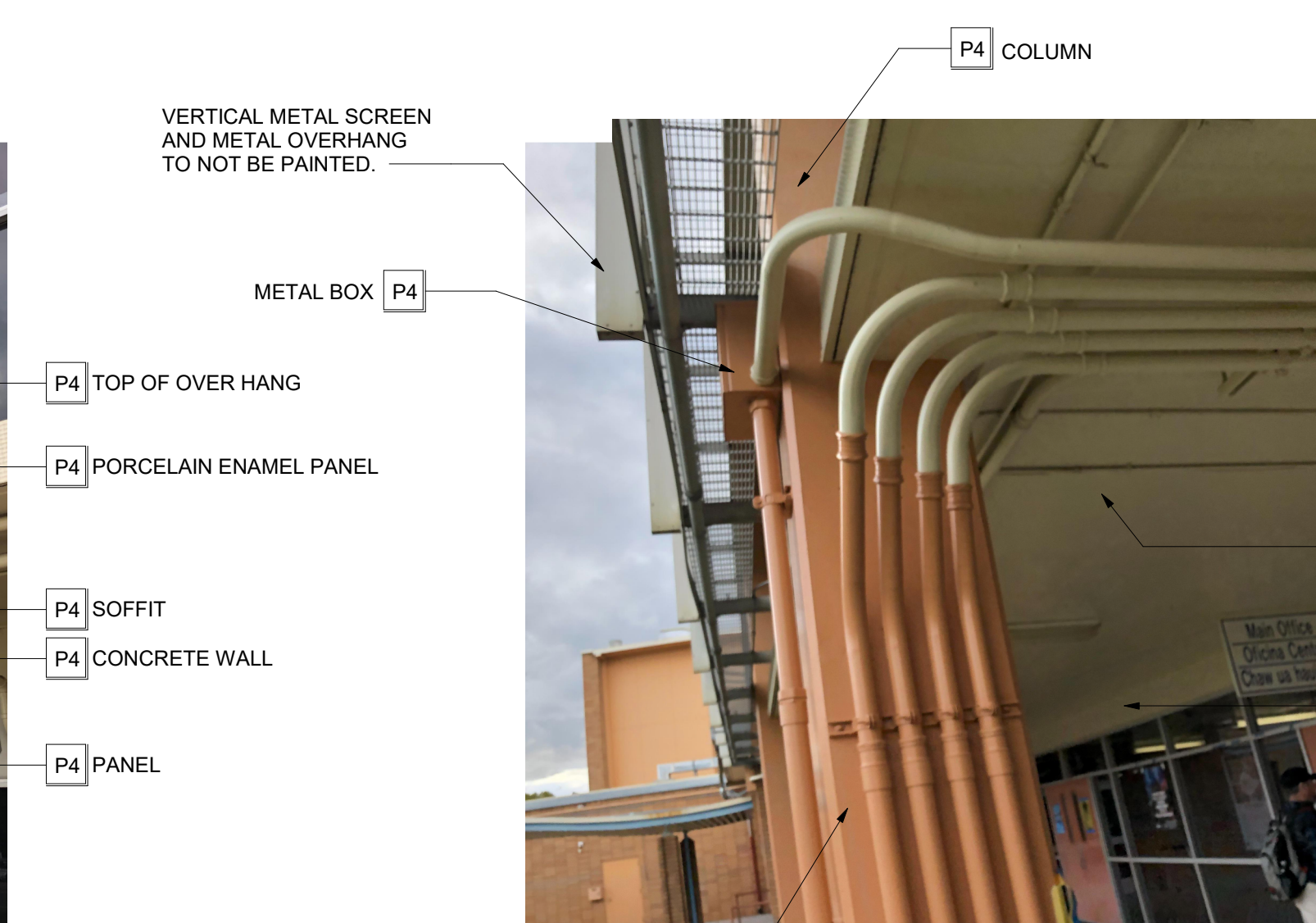
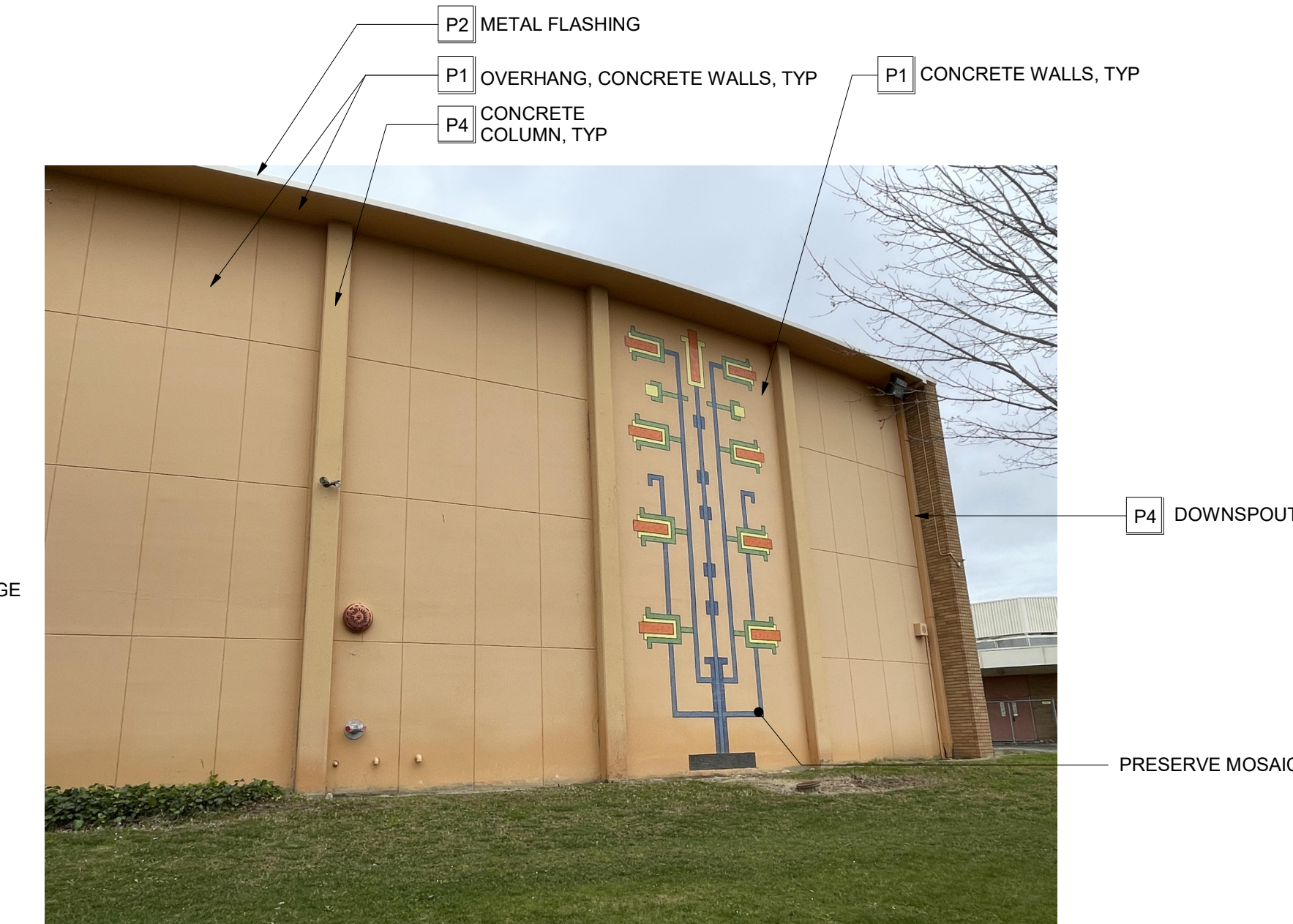
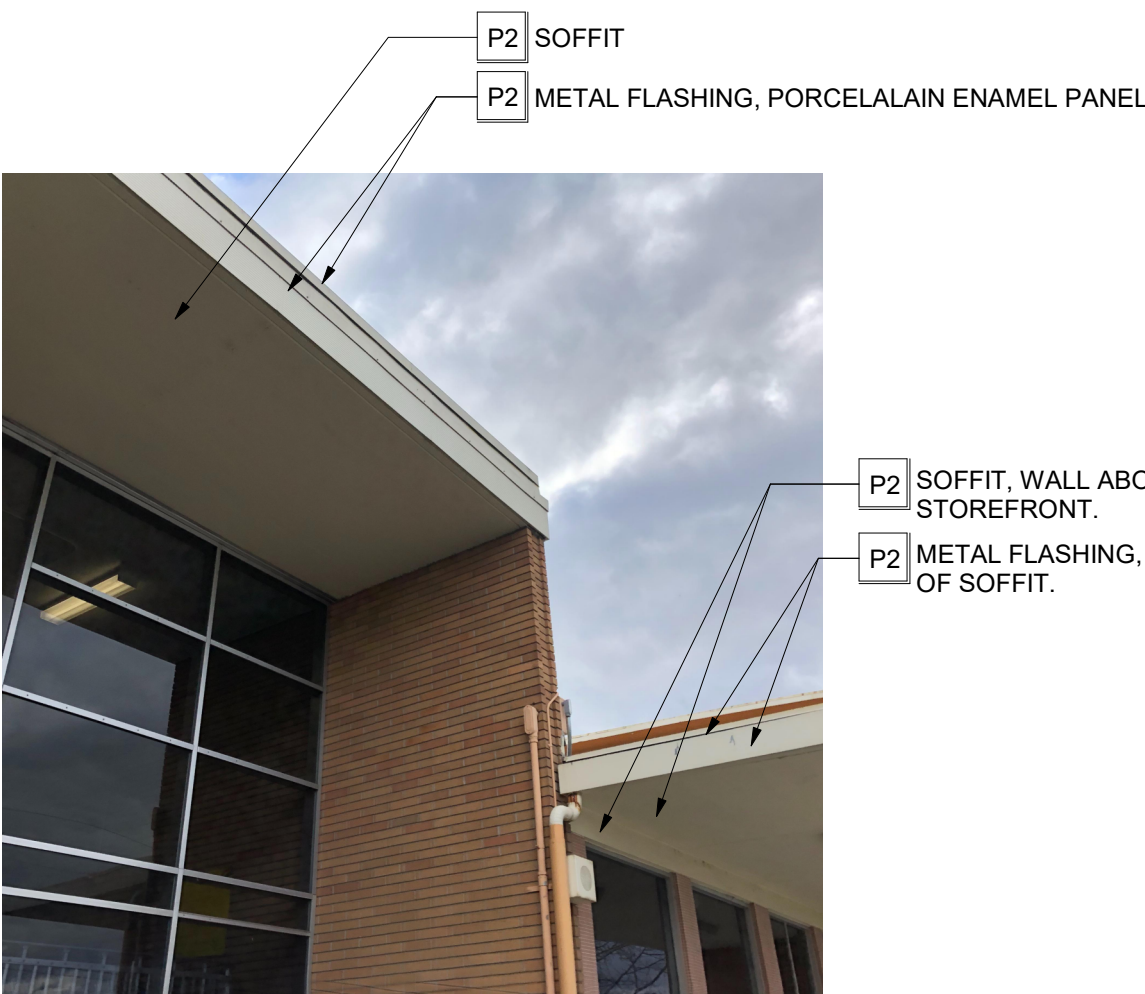
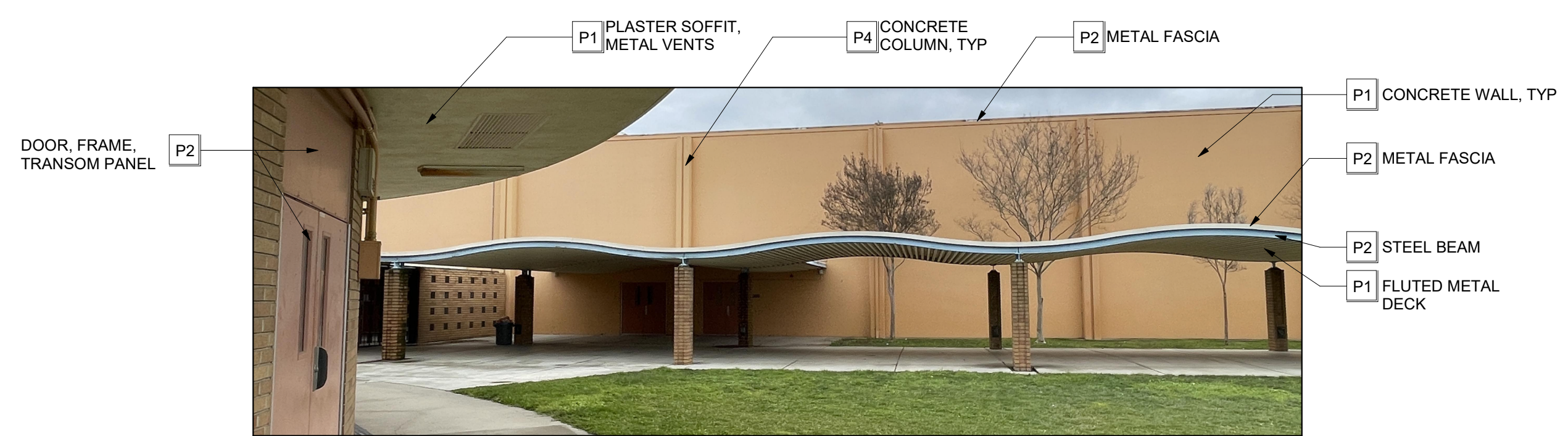
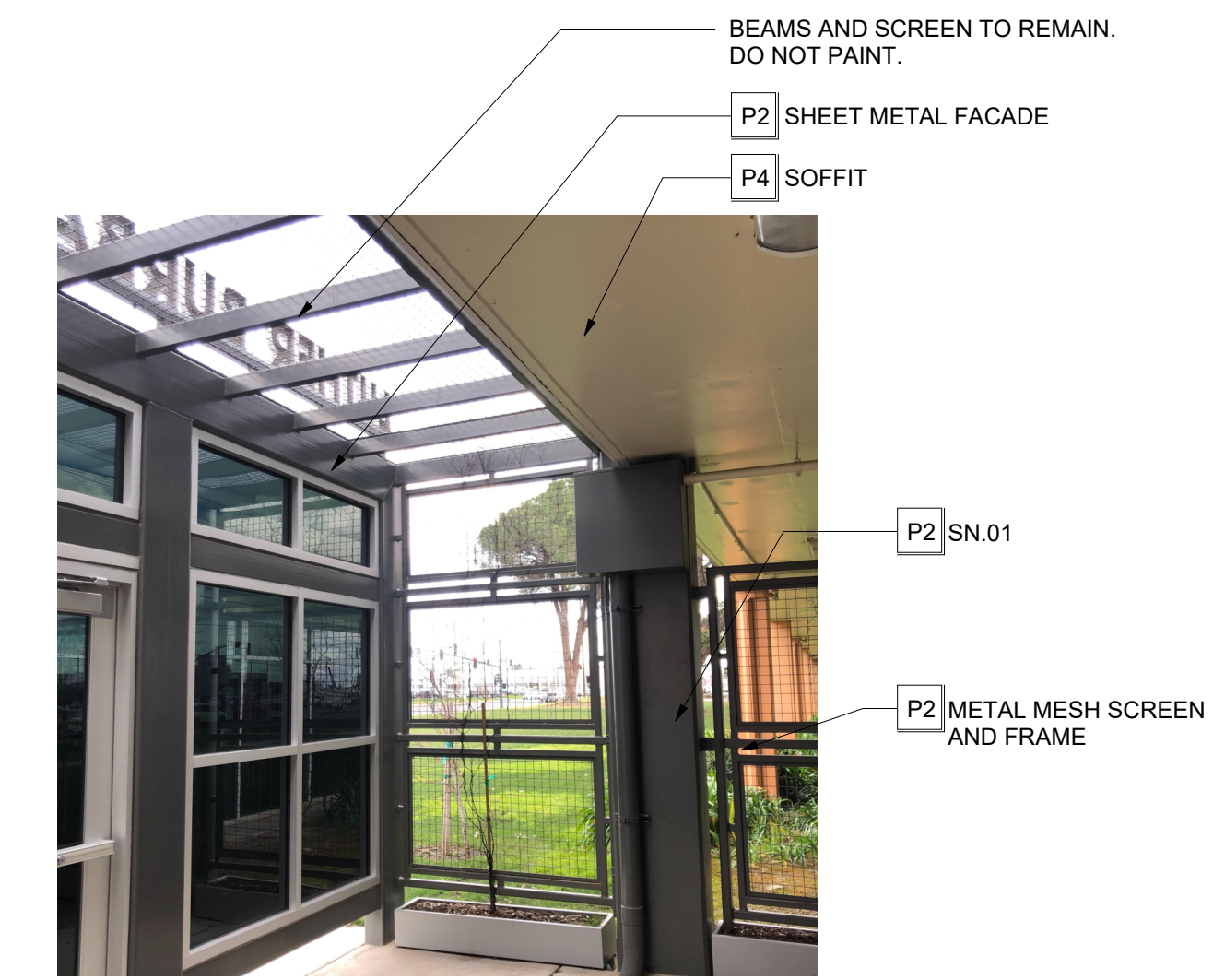
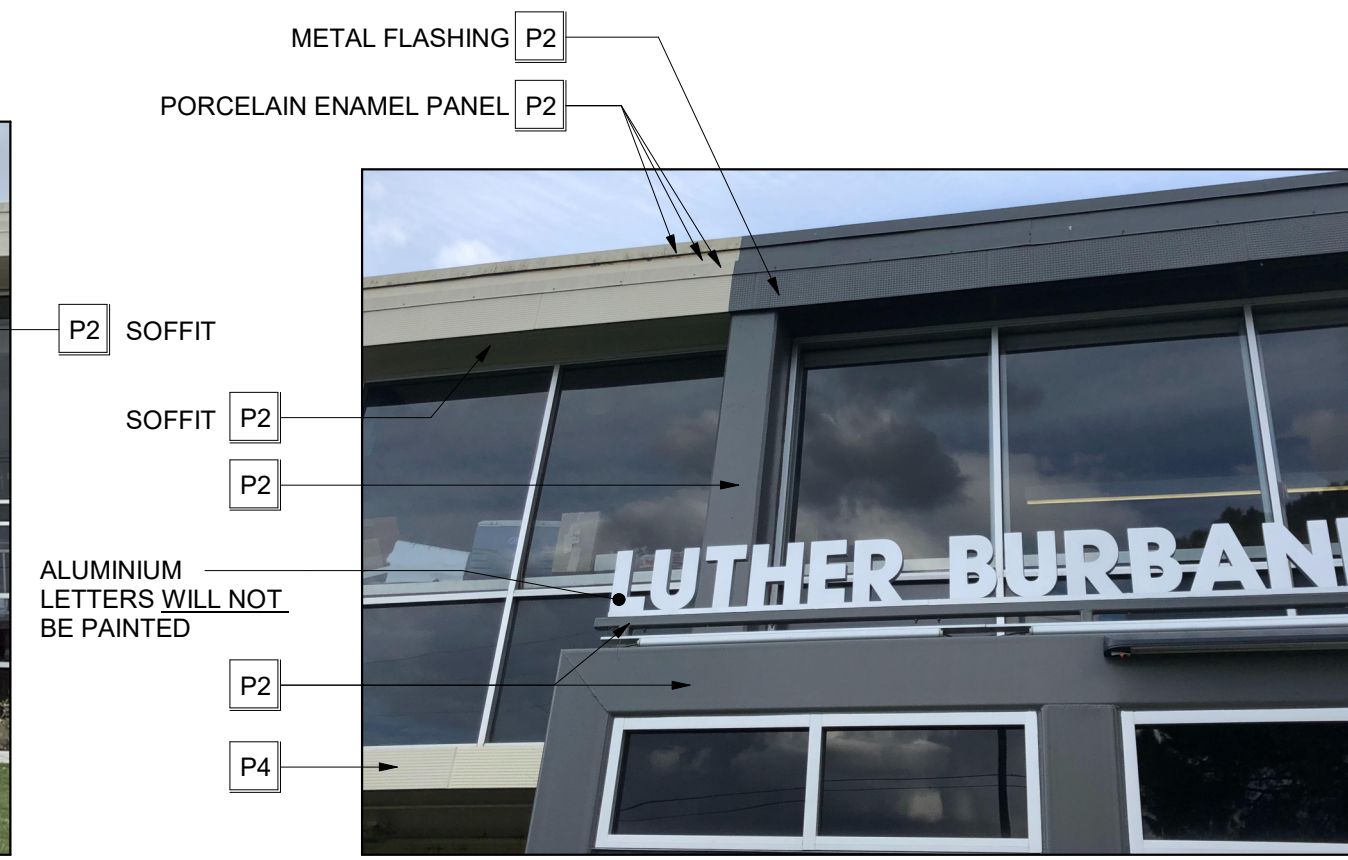
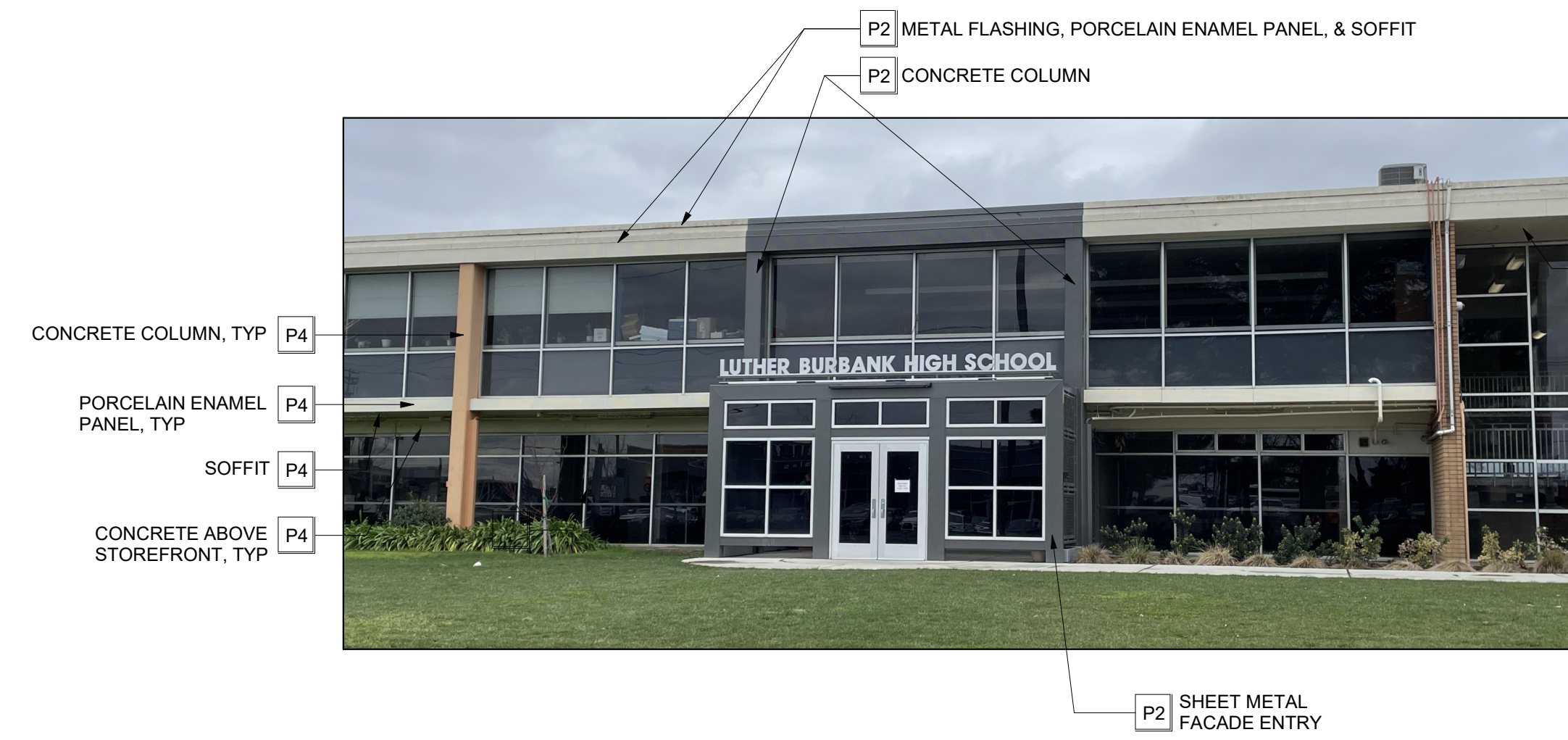


C:\Users\mcm\Documents\AbyLocal Files\186668000 Luther Burbank HS_Abbigail McClinton.dwg 4/20/2023 2:26:31 PM



HMC Architects

3186068100

2101 CAPITOL AVE SUITE 100, SACRAMENTO, CA, 95816
916 368 7900 / www.hmcarchitects.com



ISSUE

DESCRIPTION	DATE
<input type="checkbox"/> PAINT COLOR	
P1 KELLY MOORE - KMW1 AMBIENT GLOW	
P2 KELLY MOORE - KM4960 EVENING GLORY	
P3 KELLY MOORE - KM5740 MONTECITO	
P4 KELLY MOORE - KM4582-5 BEAVER PELT	
P5 KELLY MOORE - KM5379 BAKED BEANS	

GENERAL NOTES

- AT ALL DOORS REMOVE EXISTING FIRE EXTINGUISHER STICKERS. CLEAN ANY RESIDUE. INSTALL NEW FIRE EXTINGUISHER STICKERS AFTER PAINTING THE DOORS. TYP ALL DOORS.
- PROVIDE MASKING TAPE OVER DISTRICT DOOR NUMBER STICKERS TO PROTECT DURING NEW PAINTING.
- ALL CONDUIT, PIPING, SPEAKERS, EXHAUST PIPES AND ATTACHMENTS TO BE PAINTED TO MATCH ADJACENT SURFACE. IF ADJACENT COLOR CHANGES ACROSS LENGTH OF PIPE, THAT COLOR MATCH IS TO BE REFLECTED. THIS SHALL APPLY TO CONDUIT, PIPING, SPEAKERS, EXHAUST AND RELATED ATTACHMENTS THAT ARE BEING SUSPENDED FROM A SOFFIT, DECK, OR CEILING AND COLORS ARE TO MATCH THE SURFACES FROM WHICH THEY ARE BEING HUNG FROM.
- CONDUIT, PIPING, SPEAKERS AT BRICK TO BE PAINT COLOR 5.
- PROTECT ALL EXISTING LIGHT FIXTURES, FIRE ALARM DEVICES AND CAMERAS DURING PAINTING PROCESS. CONDUIT TO THESE DEVICES SHALL BE PAINTED TO MATCH ADJACENT SURFACES.
- ALL WINDOW FRAMES TO REMAIN AS IS AND SHALL NOT BE PAINTED, U.O.N.
- HAND CLEAN AND SEAL BRICK, TYP. U.O.N.
- CLEAN ALL SURFACE FROM STICKERS, DEBRIS, AND RESIDUE PRIOR TO PAINTING.
- CUT BACK LANDSCAPING AS NECESSARY TO ACCESS ALL SURFACES. CONFIRM EXTENT WITH DISTRICT IF REMOVAL IS SIGNIFICANT.
- REMOVE PROTECTIVE CAGES AT ALL DEVICES (SPEAKERS, HORNS, ETC.) PRIOR TO PAINTING. REINSTALL AFTER COMPLETION.
- MASK ALL WALL MOUNTED SIGNS, MURALS, AND OTHER ITEMS EXCLUDED FROM PAINTING. PROTECT IN PLACE UNTIL COMPLETION. VERIFY EACH MURAL WITH DISTRICT PRIOR TO PAINTING, U.O.N.
- PAIN ROOF MOUNTED CONDUIT IF VISIBLE FROM GROUND.
- PAINTING DOOR FRAMES. REMOVE DOOR SILENCERS/SEALS AS REQUIRED FOR PAINT. REINSTALL SILENCERS/SEALS AFTER PAINTING.
- DOORS AND FRAMES TO BE PAINTED ON EXTERIOR AND INTERIOR SIDES, INCLUDING TOPS AND SIDES OF DOORS. REMOVE DOOR HARDWARE PRIOR TO PAINTING. REINSTALL AFTER PAINTING.

BRICK CLEANING

- CLEAN ALL BRICK EXTERIOR SURFACES, INCLUDING BRICK VENEER, BRICK PLANTER/SEAT WALLS, BRICK SIGNAGE BASES, ETC. CLEANING SHALL OCCUR ONLY ON DRY WARM DAYS
- FOLLOW RECOMMENDED CLEANING PROCEDURES AS OUTLINED BY THE BRICK INDUSTRY ASSOCIATION (GOBRICK.COM)
- CLEANING PROCESS SHALL START FROM TOP OF WALL AND WORK DOWN.
- USE CLEAN, POTABLE WATER FREE OF SALTS, DETERIOUS ACIDS, ALKALIES, OR ORGANIC MATERIALS
- USE ONLY LOW PRESSURE WATER FOR CLEANING; NO HIGH PRESSURE OR ABRASIVE BLASTING SHALL BE PERMITTED. MAXIMUM PRESSURE SHALL BE DESCRIBED IN THE BRICK INDUSTRY ASSOCIATION TECHNICAL NOTES 20. TAKE SPECIAL CARE IN AREAS WHERE BRICK OR MORTAR APPEAR CRUMBLING OR COMPROMISED. ALERT THE ARCHITECT AND OWNER OF ANY UNUSUAL SITUATION.
- USE ONLY NON-METALLIC TOOLS IN CLEANING OPERATIONS
- REMOVAL OF EFFLORESCENCE SHALL BE ATTEMPTED WITH A DRY BRUSH USING BRISTLES NOT TOO STIFF TO DAMAGE THE SURFACE OF THE SUBSTRATE.
- IN AREAS WHERE DRY BRUSHING IS NOT EFFECTIVE IN REMOVAL OF EFFLORESCENCE, USE CLEANING SOLUTION. SOLUTION TO BE PROSOCO, INC. SURE KLEAN NO. 800 OR APPROVED EQUAL. NON-ACIDIC. NOT HARMFUL TO MASONRY WORK. PROTECT ALL ADJACENT SURFACES AND APPLY IN STRICT ACCORDANCE WITH MANUFACTURER'S WRITTEN INSTRUCTIONS. TEST SMALL AREA BEFORE APPLYING TO THE ENTIRE SURFACE.

FACILITY:

3500 FLORIN RD, SACRAMENTO, CA 95823

PROJECT:
LUTHER BURBANK HIGH SCHOOL IMPROVEMENTS

SHEET NAME:
EXTERIOR ELEVATIONS

DATE: 03/14/23

CLIENT PROJ NO: 3156068100

SHEET:

1 EXTERIOR PAINT - BUILDING 1 - ADMIN & THEATRE
1 1/2" = 1'-0"