

ABBREVIATIONS:

Table with 2 columns: Abbreviation and Description. Includes terms like AMPERE, ABOVE FINISHED FLOOR, ANNUNCIATOR, etc.

TECHNOLOGY SYMBOL LEGEND: ALL EQUIPMENT AND MATERIALS ARE CONTRACTOR FURNISHED, INSTALLED AND CONFIGURED (UNO)

Table with 5 columns: SYMBOL, DESCRIPTION, MANUFACTURER, PART NUMBER, NOTES / DETAIL REFERENCES. Lists various equipment symbols and their specifications.

CONTRACTOR FURNISHED DOCUMENTS:

(SHOP DRAWINGS / PRODUCT SUBMITTALS / QUALIFICATIONS)

- 1. ORDERING AND INSTALLATION OF THE SYSTEMS SHALL NOT BE STARTED UNTIL THE FOLLOWING:
1.1. CONTRACTOR FURNISHED SHOP DRAWINGS ARE RECEIVED AND APPROVED BY THE DESIGNER.
1.2. PRODUCT SUBMITTAL DOCUMENTS ARE RECEIVED AND APPROVED BY THE DESIGNER.
1.3. APPLICABLE QUALIFICATION DOCUMENTATION ARE RECEIVED AND APPROVED BY THE DESIGNER.
2. ANY DESIGN AND/OR INSTALLATION DISCREPANCIES/CHANGE ORDER REQUESTS ARE TO BE ADDRESSED AT TIME OF SHOP DRAWING CREATION, CHANGE ORDERS AFTER APPROVED SHOP DRAWINGS ARE THE SOLE RESPONSIBILITY OF THE CONTRACTOR.
3. ALTERNATIVE PRODUCTS ARE TO SUBMITTED WITH A FORMAL SUBSTITUTION REQUEST AND THE CONTRACTOR IS RESPONSIBLE FOR DEMONSTRATING PRODUCT FULL EQUIVALENCY.
4. IT SHALL BE UNDERSTOOD THAT THE DRAWINGS, DETAILS, AND ONE-LINES PROVIDED WITH THE DESIGN PACKAGE ARE DIAGRAMMATIC, INFORMATION PRESENTED IN DESIGN DRAWINGS ARE AS ACCURATE AS POSSIBLE, BUT ACCURACY IS NOT GUARANTEED AND FIELD VERIFICATION OF ALL DIMENSIONS, ROUTING, ETC., BY THE CONTRACTOR IS REQUIRED.
5. DRAWINGS AND SPECIFICATIONS ARE PROVIDED TO SHOW THE INTENT OF THE DESIGN TO ASSIST THE CONTRACTOR IN SUBMITTING AN ACCURATE BID. CONTRACTOR IS DIRECTED TO MAKE FIELD SURVEYS AS PART OF THEIR WORK PRIOR TO SUBMITTING SYSTEM LAYOUT DRAWINGS (SHOP DRAWINGS). THE CONTRACTOR SHALL MAKE ALLOWANCE IN THE PROPOSAL TO COMPLY WITH THE INTENT OF THE DESIGN.
6. IN CASE OF DOUBT OF WORK INTENDED, IT IS THE RESPONSIBILITY OF THE CONTRACTOR TO REQUEST INSTRUCTIONS FROM THE DESIGNER OR OWNER PRIOR TO BID.
7. THE CONTRACTOR SHALL BE RESPONSIBLE FOR INSTALLING A COMPLETE, OPERABLE, AND FULLY FUNCTIONING SYSTEM.

TECHNOLOGY GENERAL PROJECT NOTES:

- 1. UPON COMPLETION OF THE INSTALLATION OF THE SYSTEMS, THE CONTRACTOR SHALL PROVIDE A SATISFACTORY TEST OF THE ENTIRE SYSTEMS IN THE PRESENCE OF THE ARCHITECT/DESIGNER, INSPECTOR, AND THE OWNER.
2. A STAMPED SET OF APPROVED SYSTEM DESIGN DOCUMENTS, AND CONTRACTOR FURNISHED SHOP DRAWINGS SHALL BE ON THE JOB SITE AND USED FOR INSTALLATION. THE CONTRACTOR SHALL INCORPORATE ANY AND ALL REVISIONS TO DRAWINGS AS REQUIRED. ANY DEVIATION FROM APPROVED DESIGN DOCUMENTS, INCLUDING THE SUBSTITUTION OF DEVICES, SHALL BE APPROVED BY THE ARCHITECT/DESIGNER AND THE OWNER PRIOR TO INSTALLATION.
3. ANY DISCREPANCIES BETWEEN THE DRAWINGS AND THE CODE OR RECOGNIZED STANDARDS SHALL BE BROUGHT TO THE ATTENTION OF THE ARCHITECT/DESIGNER PRIOR TO INSTALLATION.
4. ALL PENETRATIONS THROUGH RATED ASSEMBLIES REQUIRING OPENING PROTECTION SHALL BE PROVIDED WITH THROUGH PENETRATION FIRST STOP SYSTEMS WITH A "T" RATING EQUAL TO THE ASSEMBLY PENETRATED. SEE DETAILS ON SHEET 1901 FOR MORE INFORMATION.
5. PER CEC STANDARDS, ALL WIRING IS TO BE PULLED THROUGH EACH JUNCTION BOX AND CONNECTED DIRECTLY TO EACH DEVICE. DO NOT SPLICE THE WIRE. THERE MUST BE AT LEAST 6" OF LEAD WIRE FROM THE BOX TO THE DEVICE.
6. ALL CLOCK, BELL AND INTERCOM CIRCUITS SHALL BE IN CONDUIT, SURFACE RACEWAY, OR OPEN RUN ABOVE CEILING, UNDER FLOORS AND IN WALLS IN A NEAT AND PROTECTED MANNER AS INDICATED ON DESIGN DOCUMENTS. EXPOSED CABLES ARE ONLY PERMITTED IF INDICATED ON DESIGN DOCUMENTS AS "EXPOSED".
7. LOW VOLTAGE PANELS, REMOTES, AND COMPONENTS SHALL BE SECURED TO MOUNTING SURFACES PER MANUFACTURER'S SPECIFICATIONS. NO SINGLE DEVICE SHALL EXCEED THE WEIGHT FOR 20 LBS., WITHOUT SPECIAL MOUNTING DETAILS.
8. THE CONTRACTOR SHALL NOTIFY THE ARCHITECT/DESIGNER AT A MINIMUM OF FIVE (5) WORKING DAYS PRIOR TO FINAL INSPECTION FOR FINAL PUNCH ALL ITEMS ON PUNCH LIST MUST BE COMPLETE FOR JOB TO FINAL.
9. PRIOR TO FINAL INSPECTION, THE CONTRACTOR SHALL PROVIDE ALL PROJECT AS-BUILT DRAWINGS AND MANUALS PER SPECIFICATIONS.
10. THE CONTRACTOR SHALL ALSO PROVIDE A TYPED RECORD OF COMPLETION. A FINAL WILL NOT BE GRANTED UNTIL THE ABOVE IS APPROVED BY THE OWNER.
11. THE TERM "PROVIDE" SHALL MEAN TO FURNISH, INSTALL AND MAKE FULLY OPERATIONAL.

SCOPE OF WORK:

- 1. THE CONTRACTOR SHALL PROVIDE ALL CLOCK, BELL AND INTERCOM EQUIPMENT, LICENSES, SOFTWARE AND ACCESSORIES FOR COMPLETE AND FULLY OPERATIONAL SYSTEMS.
2. THE CONTRACTOR SHALL PROVIDE ALL DATA NETWORK EQUIPMENT, LICENSES, SOFTWARE AND ACCESSORIES FOR COMPLETE AND FULLY OPERATIONAL DATA NETWORK SYSTEM.
3. THE CONTRACTOR SHALL REMOVE OLD OR ABANDONED CLOCK, BELL AND INTERCOM COMPONENTS (INCLUDING WIRE AND PATHWAY) AND PLATE OVER ANY OPENINGS.
4. THE CONTRACTOR SHALL TOUCH UP PAINT TO MATCH EXISTING CONDITIONS FOR NEW LOCATIONS FOR INSTALL OR AREAS OF DEMOLITION.
5. THE CONTRACTOR SHALL COORDINATE CUTOVERS AND ACTIVATION/COMMISSIONING OF NEW SYSTEM WITH DISTRICT REPRESENTATIVE AND DISTRICT STAFF.

PROJECT CODES AND STANDARDS:

PARTIAL LIST OF APPLICABLE CODES AND STANDARDS EFFECTIVE : JANUARY 1, 2023:
2022 CALIFORNIA ADMINISTRATIVE CODE (CAC), CCR, TITLE 24, PART 1
2022 CALIFORNIA BUILDING CODE (CBC), CCR, TITLE 24, PART 2 (2018 INTERNATIONAL BUILDING CODE WITH CALIFORNIA AMENDMENTS)
2022 CALIFORNIA ELECTRICAL CODE (CEC), CCR, TITLE 24, PART 3 (2017 NATIONAL ELECTRICAL CODE WITH CALIFORNIA AMENDMENTS)
2022 CALIFORNIA MECHANICAL CODE (CMC), CCR, TITLE 24, PART 4 (2018 UNIFORM MECHANICAL CODE, WITH CALIFORNIA AMENDMENTS)
2022 CALIFORNIA ENERGY CODE, CCR, TITLE 24, PART 6
2022 CALIFORNIA FIRE CODE (CFC), CCR, TITLE 24, PART 9 (2018 INTERNATIONAL FIRE CODE WITH CALIFORNIA AMENDMENTS)
2022 CALIFORNIA GREEN BUILDING STANDARDS CODE, CCR, TITLE 24, PART 11
2022 CALIFORNIA REFERENCED STANDARDS CODE, CCR, TITLE 24, PART 12
2022 NFPA 72: NATIONAL FIRE ALARM AND SIGNALING CODE, NATIONAL FIRE PROTECTION ASSOCIATION

ANCHORAGE AND BRACING NOTES:

APPLICABLE CODE: 2019 CBC REVISED: 02/14/2020

MEP COMPONENT ANCHORAGE NOTE:

ALL MECHANICAL, PLUMBING, AND ELECTRICAL COMPONENTS SHALL BE ANCHORED AND INSTALLED PER THE DETAILS ON THE DSA APPROVED CONSTRUCTION DOCUMENTS. THE FOLLOWING COMPONENTS SHALL BE ANCHORED OR BRACED TO MEET THE FORCE AND DISPLACEMENT REQUIREMENTS PRESCRIBED IN THE 2019 CBC SECTIONS 1917A.1.18 THROUGH 1917A.1.26 AND ASCE 7-16 CHAPTERS 13, 26 THRU 30:
1. ALL PERMANENT EQUIPMENT AND COMPONENTS.
2. TEMPORARY, MOVEABLE OR MOBILE EQUIPMENT THAT IS PERMANENTLY ATTACHED (E.G. HARD WIRED) TO THE BUILDING UTILITY SERVICES SUCH AS ELECTRICITY, GAS OR WATER. "PERMANENTLY ATTACHED" SHALL INCLUDE ALL ELECTRICAL CONNECTIONS EXCEPT PLUGS FOR 110/220 VOLT RECEPTACLES HAVING A FLEXIBLE CABLE.
3. TEMPORARY, MOVEABLE OR MOBILE EQUIPMENT WHICH IS HEAVIER THAN 400 POUNDS OR HAS A CENTER OF MASS LOCATED 4 FEET OR MORE ABOVE THE ADJACENT FLOOR OR ROOF LEVEL THAT DIRECTLY SUPPORT THE COMPONENT IS REQUIRED TO BE RESTRAINED IN A MANNER APPROVED BY DSA.

THE FOLLOWING MECHANICAL AND ELECTRICAL COMPONENTS SHALL BE POSITIVELY ATTACHED TO THE STRUCTURE BUT NEED NOT DEMONSTRATE DESIGN COMPLIANCE WITH THE REFERENCES NOTED ABOVE. THESE COMPONENTS SHALL HAVE FLEXIBLE CONNECTIONS PROVIDED BETWEEN THE COMPONENT AND ASSOCIATED DUCTWORK, PIPING, AND CONDUIT. FLEXIBLE CONNECTIONS MUST ALLOW MOVEMENT IN BOTH TRANSVERSE AND LONGITUDINAL DIRECTIONS:
A. COMPONENTS WEIGHING LESS THAN 400 POUNDS AND HAVING A CENTER OF MASS LOCATED 4 FEET OR LESS ABOVE THE ADJACENT FLOOR OR ROOF LEVEL THAT DIRECTLY SUPPORT THE COMPONENTS.
B. COMPONENTS WEIGHING LESS THAN 20 POUNDS, OR IN THE CASE OF DISTRIBUTION SYSTEMS, LESS THAN 5 POUNDS PER FOOT, WHICH ARE SUSPENDED FROM A ROOF OR FLOOR OR HUNG FROM A WALL.

THE ANCHORAGE OF ALL MECHANICAL, ELECTRICAL AND PLUMBING COMPONENTS SHALL BE SUBJECT TO THE APPROVAL OF THE DESIGN PROFESSIONAL IN GENERAL RESPONSIBLE CHARGE OR STRUCTURAL ENGINEER DELEGATED RESPONSIBILITY AND ACCEPTANCE BY DSA. THE PROJECT INSPECTOR WILL VERIFY THAT ALL COMPONENTS AND EQUIPMENT HAVE BEEN ANCHORED IN ACCORDANCE WITH THE ABOVE REQUIREMENTS.

PIPING, DUCTWORK, AND ELECTRICAL DISTRIBUTION SYSTEM BRACING NOTE:

PIPING, DUCTWORK AND ELECTRICAL SYSTEMS SHALL BE BRACED TO COMPLY WITH THE FORCES AND DISPLACEMENTS PRESCRIBED IN ASCE 7-16 SECTIONS 13.3 AS DEFINED IN ASCE 7-16 SECTIONS 13.6.5, 13.6.6, 13.6.7, 13.6.8 AND 2019 CBC SECTIONS 1917A.1.24, 1917A.1.25 AND 1917A.1.26

THE METHOD OF SHOWING BRACING AND ATTACHMENTS TO THE STRUCTURE FOR THE IDENTIFIED DISTRIBUTIONS SYSTEM ARE A NOTED BELOW. WHEN BRACING AND ATTACHMENTS ARE BASED ON A PRE-APPROVED INSTALLATION GUIDE (E.G. OSHPD OPM FOR 2013 CBC OR LATER), COPIES OF THE BRACING SYSTEM INSTALLATION GUIDE OR MANUAL SHALL BE AVAILABLE ON THE JOBSITE PRIOR TO THE START OF AND DURING THE HANGING AND BRACING OF THE DISTRIBUTION SYSTEMS. THE STRUCTURAL ENGINEER OR RECORD SHALL VERIFY THE ADEQUACY OF THE STRUCTURE TO SUPPORT THE HANGER AND BRACE LOADS.

MECHANICAL PIPING (MP), MECHANICAL DUCTS (MD), PLUMBING PIPES (PP), ELECTRICAL DISTRIBUTION SYSTEMS (E):

MP : MD : PP : E X OPTION 1: DETAILED ON THE APPROVED DRAWINGS WITH PROJECT SPECIFIC NOTES AND DETAILS.
MP : MD : PP : E O OPTION 2: SHALL COMPLY WITH THE APPLICABLE OSHPD PRE-APPROVED (OPM #)

SHEET INDEX:

Table with 2 columns: SHEET, DESCRIPTION. Lists sheets T000 through T801 and their descriptions.



KMM SERVICES, INC TECHNOLOGY & FIRE LIFE SAFETY

5433 El Camino Ave. Suite 5
Carlsbad, CA 92008
Office: (916) 359-4000 www.kmmservices.com



Copyright © 2023

These drawings and specifications and the ideas, designs and arrangements represented thereby are and shall remain the property of KMM Services, Inc. and no part thereof shall be copied, disclosed to others, or used in connection with any other work or project other than the specific project for which they have been prepared and developed without the written consent of KMM Services, Inc. Visual contact with these drawings or specifications shall constitute conclusive evidence of these restrictions.

IF DRAWING IS NOT 30"x42" IT IS A REDUCED PRINT

SHEET REVISIONS

Table with 3 columns: DELTA, DESCRIPTION, DATE. Empty table for revisions.

SITE KEY PLAN



PROJECT
SACRAMENTO CITY USD
JOSEPH BONNHEIM E.S.
TELE-CENTER
UPGRADE PROJECT
7300 MARIN AVE.
SACRAMENTO, CA. 95820

SHEET TITLE
TECHNOLOGY COVER SHEET

DRAWING STATUS
CONSTRUCTION DOCUMENTS

Table with 2 columns: Field Name, Value. Includes PROJECT NO., BID PACKAGE, DESIGNED BY, CHECKED BY, ISSUE DATE, WORKING DATE.

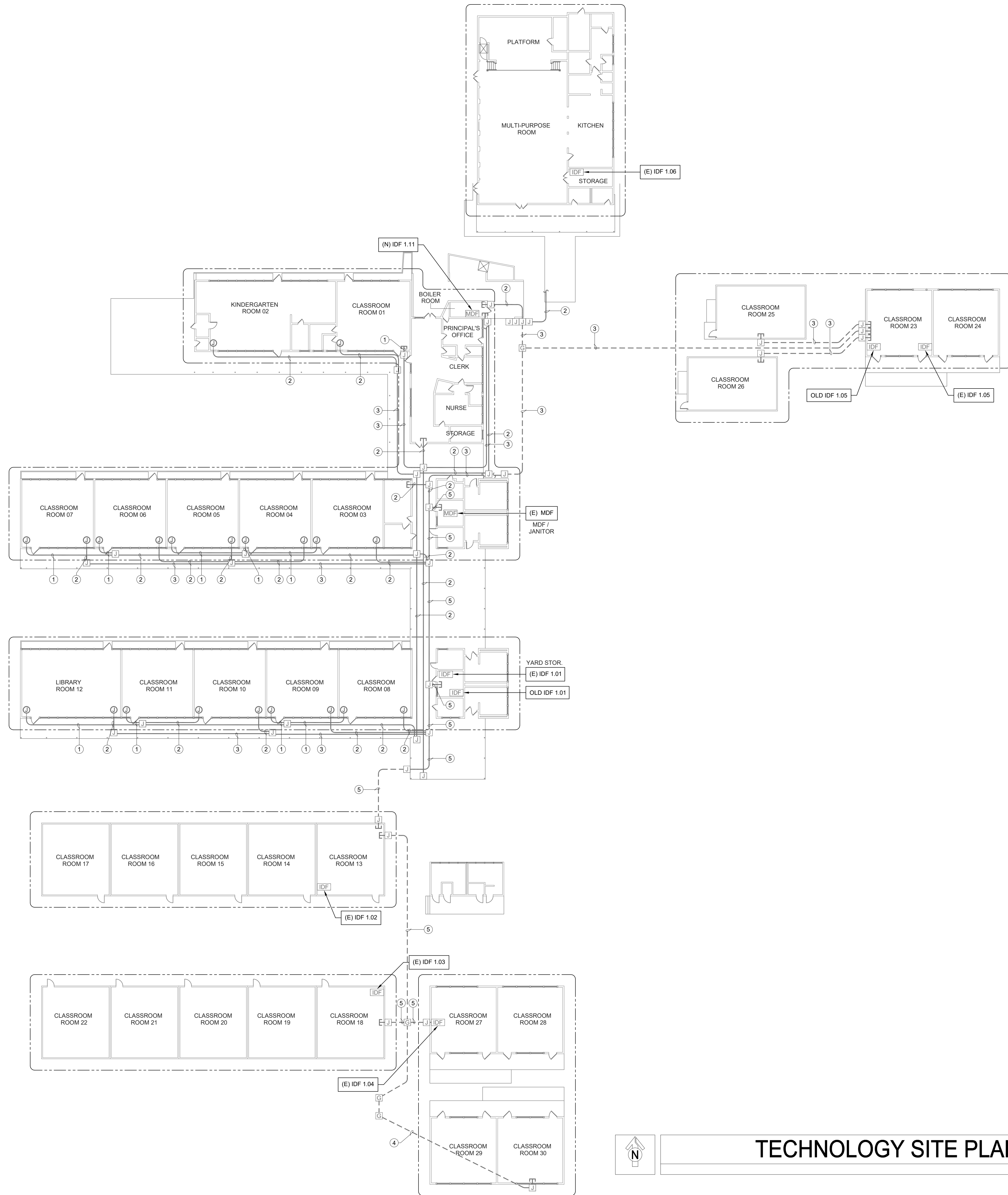
REVISION

SHEET T000

CONDUIT QUANTITY AND SIZE:

①	(E) 1 EA. 1" CONDUITS.
②	(E) 1 EA. 2" CONDUITS.
③	(E) 2 EA. 2" CONDUITS.
④	(E) 4 EA. 2" CONDUITS.
⑤	(E) 4 EA. 2" CONDUITS.

- GENERAL NOTE(S):**
- NO STRUCTURAL BEAMS SHALL BE PENETRATED OR ALTERED.
 - PROVIDE APPROPRIATE WM5500 TO WM2300 FITTINGS TO EXIT WM5500 TO TRANSITION DOWN TO DROP LOCATIONS.
 - RELOCATE EXISTING INTRUSION DEVICES UP OR DOWN TO ALLOW NEW RACEWAY TO BE INSTALLED. VERIFY THAT THE RELOCATED DEVICE IS NOT CAUSING A FAULT ON THE ALARM PANEL PRIOR TO LEAVING THE SITE.



KMM SERVICES, INC
TECHNOLOGY & FIRE LIFE SAFETY

5433 El Camino Ave. Suite 5
Carmichael, CA 95608
Office: (916) 359-4000 www.kmm-services.com



Copyright © 2023
These drawings and specifications and the ideas, designs and arrangements represented thereby are and shall remain the property of KMM Services, Inc. and no part thereof shall be copied, disclosed, or used in connection with any other work or project other than the specific project for which they have been prepared and developed without the written consent of KMM Services, Inc. Visual contact with these drawings or specifications shall constitute conclusive evidence of these restrictions.

IF DRAWING IS NOT 30"x42" IT IS A REDUCED PRINT

SHEET REVISIONS

DELTA	DESCRIPTION	DATE

SITE KEY PLAN

PROJECT
**SACRAMENTO CITY USD
JOSEPH BONNHEIM E.S.**
TELE-CENTER
UPGRADE PROJECT
7300 MARIN AVE.
SACRAMENTO, CA. 95820

SHEET TITLE
**TECHNOLOGY
SITE PLAN
- BACKBONE PATHWAY**

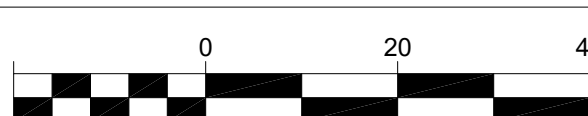
DRAWING STATUS
CONSTRUCTION DOCUMENTS

PROJECT NO:	0183-464
BID PACKAGE:	TBD
DESIGNED BY:	RK/CC
CHECKED BY:	JG
ISSUE DATE:	2023-05-09
WORKING DATE:	2023-04-28

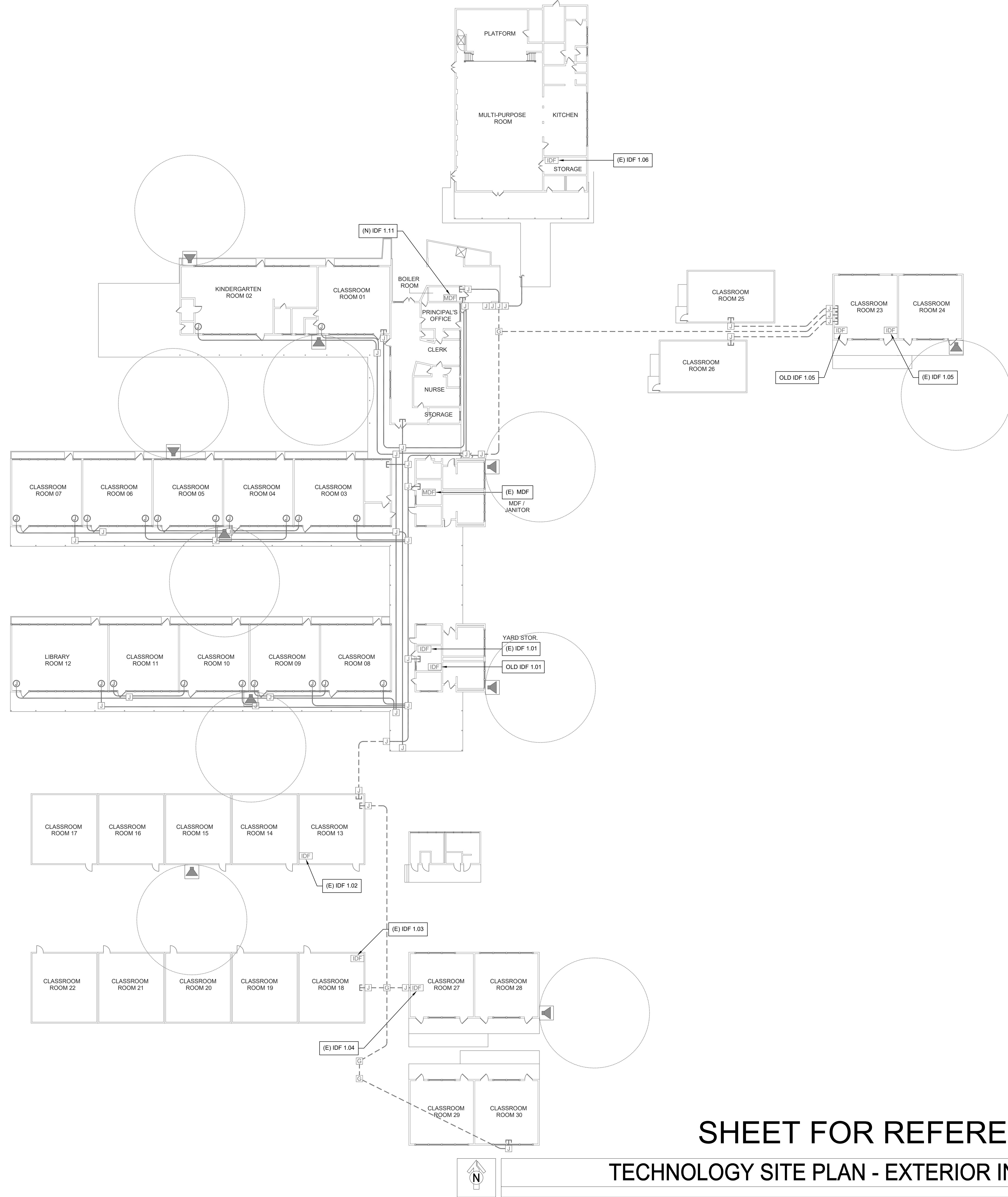
REVISION
SHEET T100

TECHNOLOGY SITE PLAN - BACKBONE PATHWAY

SCALE: 1"=20'



Logix Name: good
 Plot Date: May 11, 2023 - 3:08 PM
 Plot Path: \\s01sc014_kc01\T100_Site_Plan.dwg
 User: KMM\kmmadmin - 1001_KMMAdmin



KMM SERVICES, INC.
 TECHNOLOGY & FIRE LIFE SAFETY

5433 El Camino Ave., Suite 5
 Carmichael, CA 95608
 Office: (916) 359-4000 www.kmm-services.com



Copyright © 2023
 These drawings and specifications and the ideas, designs and arrangements represented thereby are and shall remain the property of KMM Services, Inc. and no part thereof shall be copied, disclosed, altered, or used in connection with any other work or project other than the specific project for which they have been prepared and developed without the written consent of KMM Services, Inc. Verbal contact with these drawings or specifications shall constitute conclusive evidence of these restrictions.

IF DRAWING IS NOT 30"x42" IT IS A REDUCED PRINT

SHEET REVISIONS

DELTA	DESCRIPTION	DATE

SITE KEY PLAN

PROJECT
**SACRAMENTO CITY USD
 JOSEPH BONNHEIM E.S.
 TELE-CENTER
 UPGRADE PROJECT**
 7300 MARIN AVE.
 SACRAMENTO, CA. 95820

SHEET TITLE
**TECHNOLOGY
 SITE PLAN
 - EXTERIOR
 INTERCOM SPEAKERS**

DRAWING STATUS
CONSTRUCTION DOCUMENTS

PROJECT NO:	0183-464
BID PACKAGE:	TBD
DESIGNED BY:	RK/CC
CHECKED BY:	JG
ISSUE DATE:	2023-05-09
WORKING DATE:	2023-04-23

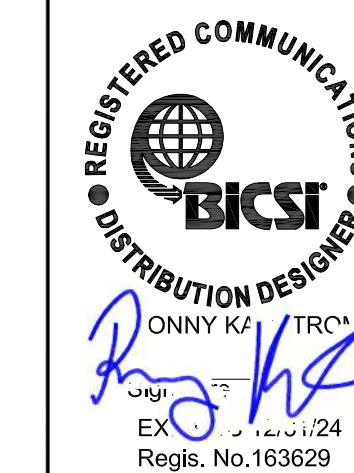
REVISION
 SHEET **T101**

Logi Name: good
 Plot Date: May 11, 2023 - 3:08 PM
 Plot Path: \\csc024\csc024\proj\183\183-464\183-464-T101.dwg
 User: good



KMM SERVICES, INC
TECHNOLOGY & FIRE LIFE SAFETY

5433 El Camino Ave. Suite 5
Carmichael, CA 95608
Office: (916) 359-4000 www.kmm-services.com



- GENERAL NOTES:**
- NO STRUCTURAL BEAMS SHALL BE PENETRATED OR ALTERED.
 - PROVIDE APPROPRIATE WM5500 TO WM2300 FITTINGS TO EXIT WM5500 TO TRANSITION DOWN TO DROP LOCATIONS.
 - RELOCATE EXISTING INTRUSION DEVICES UP OR DOWN TO ALLOW NEW RACEWAY TO BE INSTALLED. VERIFY THAT THE RELOCATED DEVICE IS NOT CAUSING A FAULT ON THE ALARM PANEL PRIOR TO LEAVING THE SITE.
 - NEW DATA DROPS INSTALLED WILL REQUIRE WM2300 INSTALLED TO EACH LOCATION.

- SHEET NOTES:**
- REPLACE (E) SPEAKER AND (E) CLOCK WITH (N) SPEAKER (WITH (N) CLASSROOM IP MODULE) AND (N) IP CLOCK MOUNTED IN (N) CLOCK/ SPEAKER COMBO BOX AT (E) CLOCK DATA DROP LOCATION. REMOVE WIREMOLD DUPLEX BOX. REWORK DATA DROP INTO CLOCK/SPEAKER COMBO BOX. BLANK OVER (E) CLOCK AND/OR (E) SPEAKER LOCATION AS REQUIRED.
 - REPLACE (E) SPEAKER AND (E) CLOCK WITH (N) SPEAKER (WITH (N) CLASSROOM IP MODULE) AND (N) IP CLOCK MOUNTED IN (N) CLOCK/ SPEAKER COMBO BOX AT (E) CLOCK LOCATION. BLANK OVER (E) CLOCK AND (E) SPEAKER LOCATION AS REQUIRED. PROVIDE ONE (1) (N) CAT6A DATA DROP.
 - PROVIDE (N) SPEAKER (WITH (N) CLASSROOM IP MODULE) AND (N) IP CLOCK MOUNTED IN (N) CLOCK/ SPEAKER COMBO BOX AT (E) CLOCK DATA DROP LOCATION. PROVIDE ONE (1) (N) DATA DROP AT (N) CLOCK/SPEAKER COMBO BOX. ROUTE THROUGH EXISTING WIREMOLD.
 - PROVIDE (N) SPEAKER WITH (N) CLASSROOM IP MODULE) AND (N) IP CLOCK MOUNTED IN (N) CLOCK/ SPEAKER COMBO BOX. PROVIDE ONE (1) (N) CAT6A DATA DROP.
 - REPLACE (E) EXTERIOR SPEAKER WITH (N) BACKBOX AND (N) SPEAKER. PROVIDE (N) INTERIOR ENCLOSURE WITH (N) CLASSROOM IP MODULE. PROVIDE ONE (1) (N) CAT6A DATA DROP.
 - PROVIDE (N) CEILING MOUNTED BACKBOX AND (N) SPEAKER (WITH (N) IP CLASSROOM MODULE) AT (E) CEILING DATA DROP LOCATION.
 - PROVIDE (N) WALL MOUNTED BACK BOX AND (N) SPEAKER (WITH (N) IP CLASSROOM MODULE). PROVIDE ONE (1) (N) CAT6A DATA DROP.
 - PROVIDE (N) WALL MOUNTED EXTERIOR BACKBOX AND (N) EXTERIOR SPEAKER. PROVIDE (N) INTERIOR ENCLOSURE WITH (N) CLASSROOM IP MODULE. PROVIDE ONE (1) (N) CAT6A DATA DROP.
 - PROVIDE (N) LARGE MESSAGE BOARD AT (E) DATA DROP LOCATION. REMOVE (E) WIREMOLD DUPLEX BOX. REWORK DATA DROP INTO DISPLAY BOARD BACKBOX.
 - REPLACE (E) SPEAKER AND (E) CLOCK WITH (N) SPEAKER (WITH (N) CLASSROOM IP MODULE) AND (N) IP CLOCK MOUNTED IN (N) CLOCK/ SPEAKER COMBO BOX AT (E) CLOCK LOCATION. BLANK OVER (E) CLOCK AND (E) SPEAKER LOCATION AS REQUIRED. LOCATE EXISTING DATA DROP ABOVE DROP CEILING AND ROUTE TO (N) COMBO BOX.
 - NEW DIGITAL OFFICE CLOCK. REWORK (E) DATA DROP INTO (N) DIGITAL CLOCK VIA APPROPRIATE WIREMOLD TRANSITION.
 - (E) CLOCK / BELL HEADEND. CONTRACTOR TO REMOVE AND INSTALL A NEW TACK BOARD ON HINGES TO COVER THE BACK BOX.
 - (E) TELECENTER ICS TO BE REMOVED AFTER CUTOVER TO (N) SYSTEM. REMOVE ALL (E) CABLES, 66-BLOCKS, AND CABINET.
 - INSTALL (N) INTERCOM SPEAKER ABOVE CLOCK.
 - PROVIDE (N) 4 PAIR COPPER FEEDER FROM MPOE TO MDF. TERMINATE INDIVIDUAL PAIRS ON CENTER PINS OF KEYSTONE JACKS. LAND IN (E) PATCH PANEL AT MDF. AND IN (N) SURFACE BOX AT MPOE.

CEILING CONDITION CHART:

1	DROP IN CEILING TILES.
2	HARD LID CEILING.

Copyright © 2023
These drawings and specifications and the ideas, designs and arrangements represented thereby are and shall remain the property of KMM Services, Inc. and no part thereof shall be copied, disclosed, or used in connection with any other work or project other than the specific project for which they have been prepared and provided without the written consent of KMM Services, Inc. Visual contact with these drawings or specifications shall constitute conclusive evidence of these restrictions.

IF DRAWING IS NOT 30"x42" IT IS A REDUCED PRINT

SHEET REVISIONS

DELTA	DESCRIPTION	DATE

SITE KEY PLAN

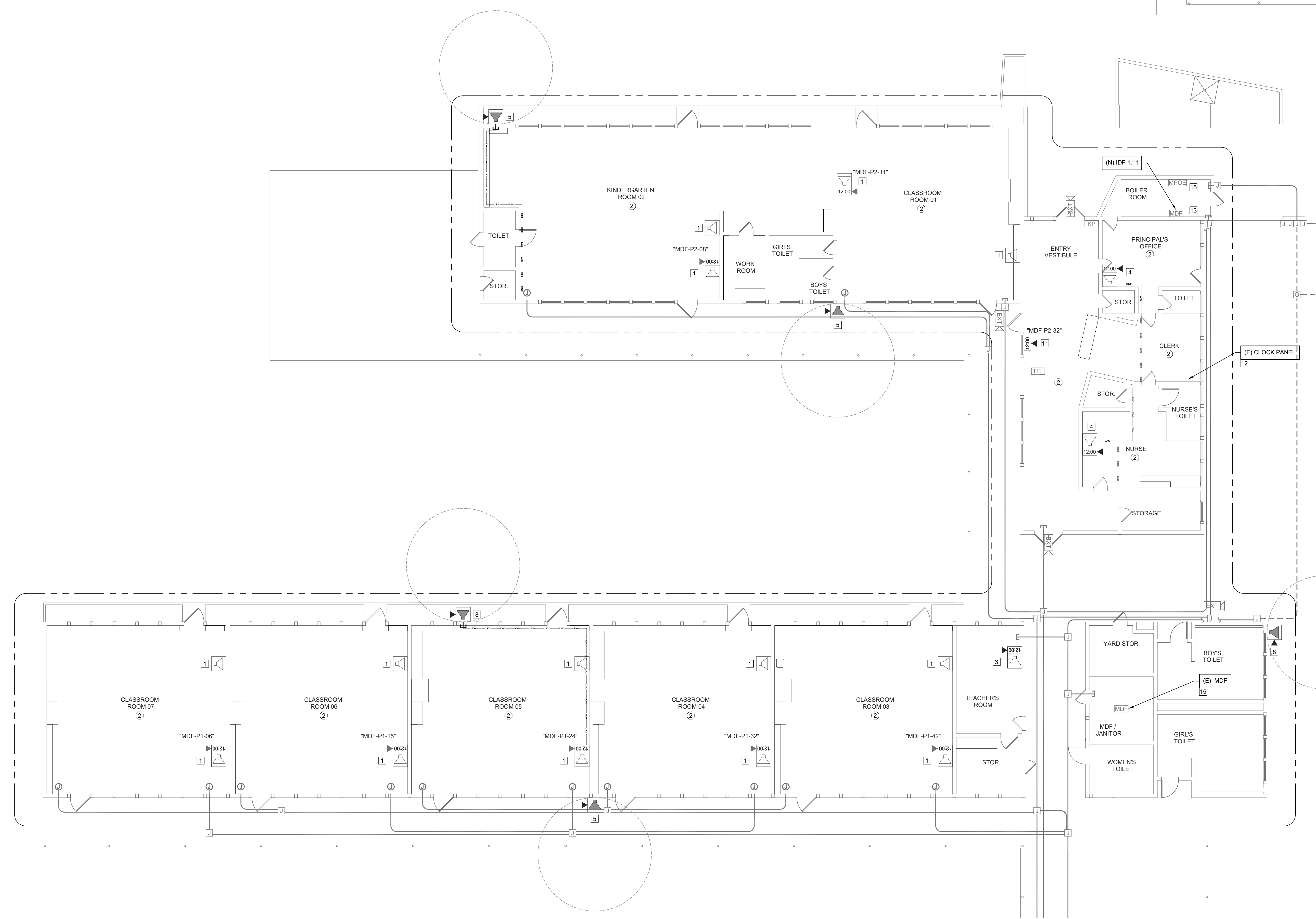
PROJECT
SACRAMENTO CITY USD
JOSEPH BONNHIEIM E.S.
**TELE-CENTER
UPGRADE PROJECT**
7300 MARIN AVE.
SACRAMENTO, CA. 95820

SHEET TITLE
TECHNOLOGY
FLOOR PLANS
- MDF

DRAWING STATUS
CONSTRUCTION DOCUMENTS

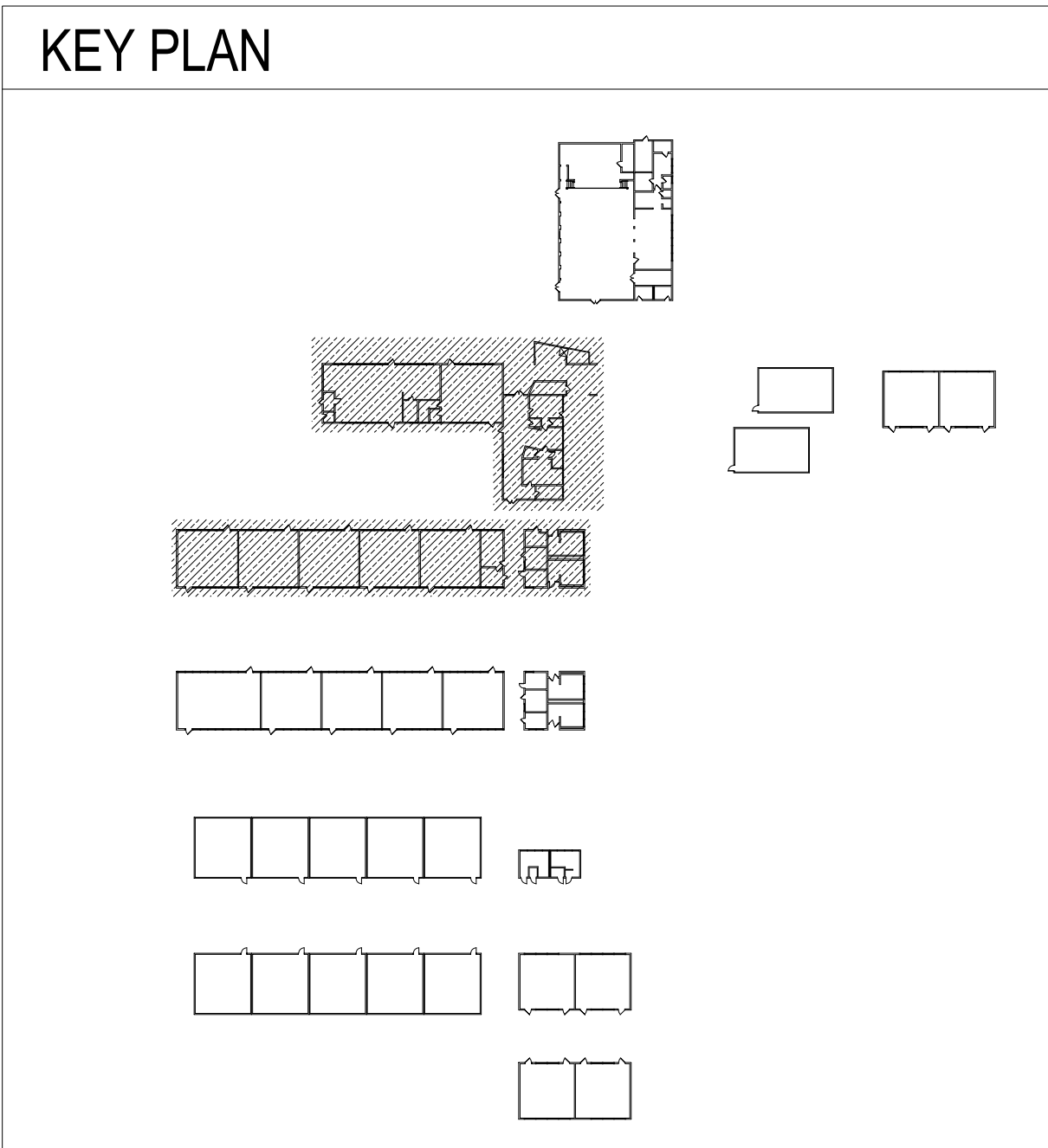
PROJECT NO:	0183-464
BID PACKAGE:	TBD
DESIGNED BY:	RK/CC
CHECKED BY:	JG
ISSUE DATE:	2023-05-09
WORKING DATE:	2023-05-09

SHEET
T200

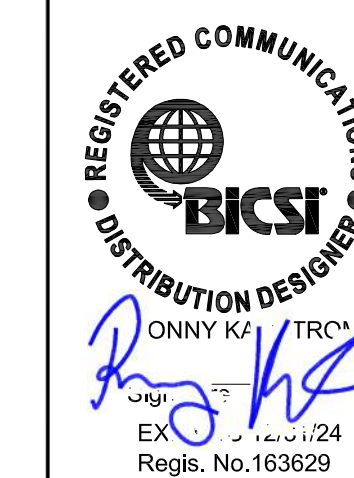


TECHNOLOGY FLOOR PLANS - MDF

SCALE: 1/8"=1'
0 4 8 12 16



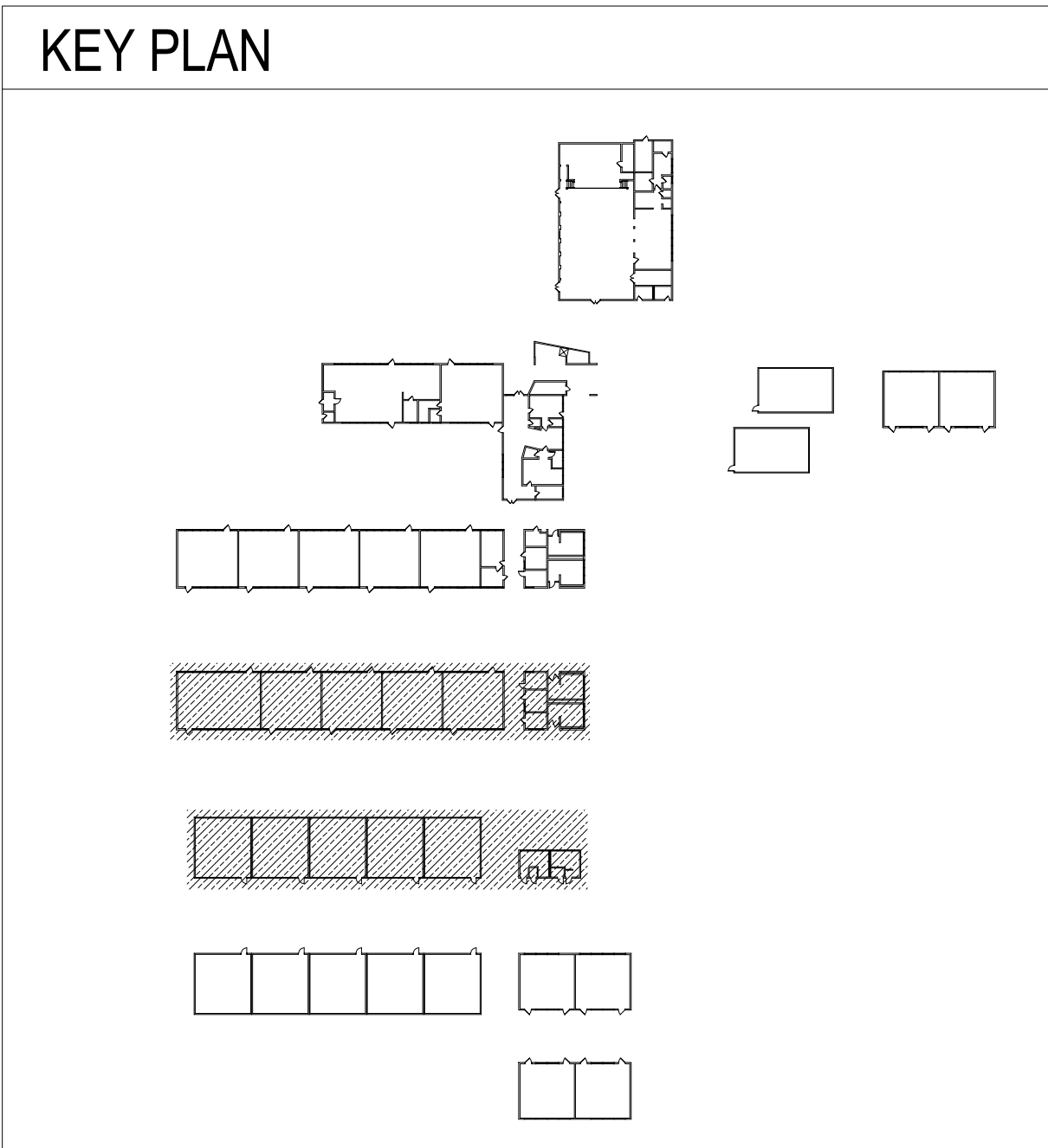
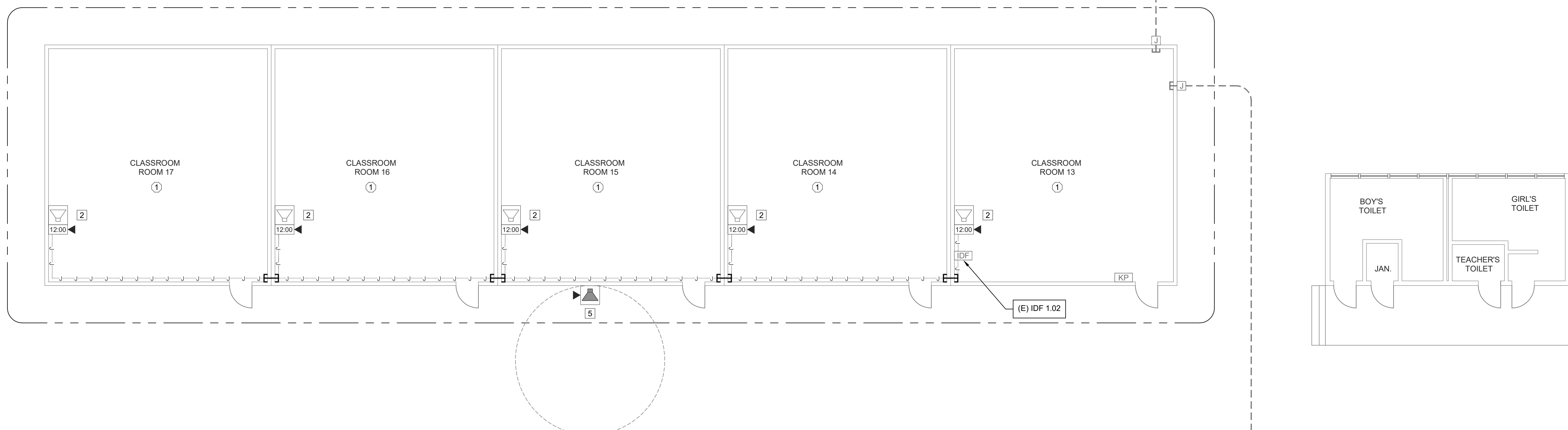
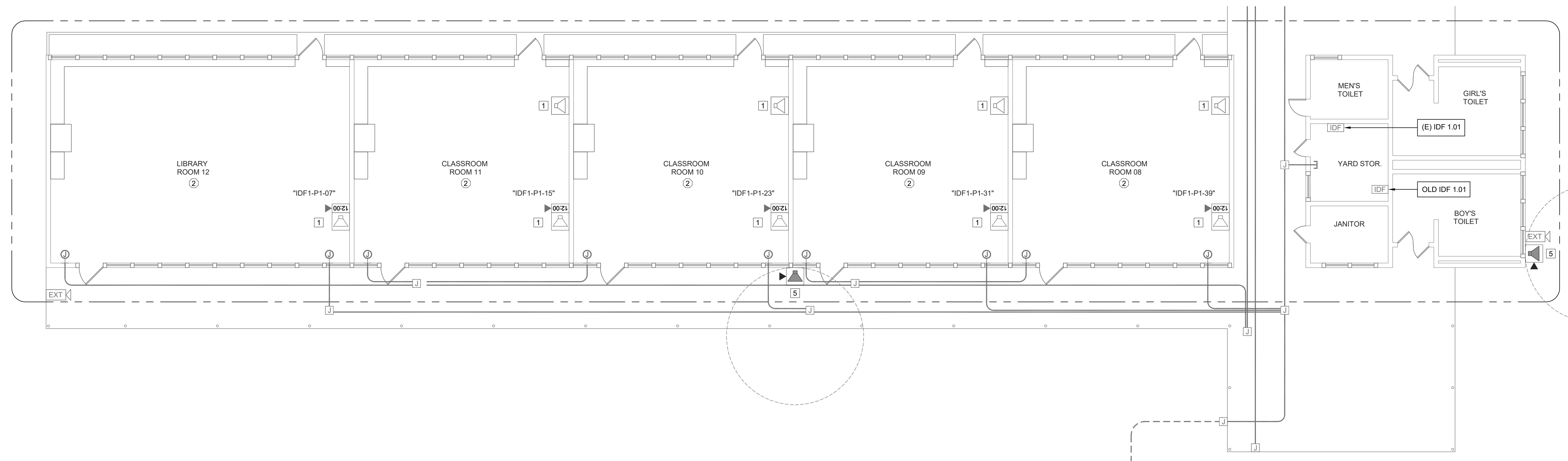
LogIn Name: good
 Plot Date: May 11, 2023 - 3:09 PM
 Project: SACRAMENTO CITY USD - JOSEPH BONNHIEIM E.S. - TELE-CENTER UPGRADE PROJECT - 7300 MARIN AVE.
 User: R. K. Campbell



- GENERAL NOTES:**
- NO STRUCTURAL BEAMS SHALL BE PENETRATED OR ALTERED.
 - PROVIDE APPROPRIATE WM5500 TO WM2300 FITTINGS TO EXIT WM5500 TO TRANSITION DOWN TO DROP LOCATIONS.
 - RELOCATE EXISTING INTRUSION DEVICES UP OR DOWN TO ALLOW NEW RACEWAY TO BE INSTALLED. VERIFY THAT THE RELOCATED DEVICE IS NOT CAUSING A FAULT ON THE ALARM PANEL PRIOR TO LEAVING THE SITE.
 - NEW DATA DROPS INSTALLED WILL REQUIRE WM2300 INSTALLED TO EACH LOCATION.

- SHEET NOTES:**
- REPLACE (E) SPEAKER AND (E) CLOCK WITH (N) SPEAKER (WITH (N) CLASSROOM IP MODULE) AND (N) IP CLOCK MOUNTED IN (N) CLOCK/ SPEAKER COMBO BOX AT (E) CLOCK DATA DROP LOCATION. REMOVE WIREMOLD DUPLEX BOX, REWORK DATA DROP INTO CLOCK/SPEAKER COMBO BOX, BLANK OVER (E) CLOCK AND/OR (E) SPEAKER LOCATION AS REQUIRED.
 - REPLACE (E) SPEAKER AND (E) CLOCK WITH (N) SPEAKER (WITH (N) CLASSROOM IP MODULE) AND (N) IP CLOCK MOUNTED IN (N) CLOCK/ SPEAKER COMBO BOX AT (E) CLOCK LOCATION. BLANK OVER (E) CLOCK AND (E) SPEAKER LOCATION AS REQUIRED. PROVIDE ONE (1) (N) CAT6A DATA DROP.
 - PROVIDE (N) SPEAKER (WITH (N) CLASSROOM IP MODULE) AND (N) IP CLOCK MOUNTED IN (N) CLOCK/ SPEAKER COMBO BOX AT (E) CLOCK DATA DROP LOCATION. PROVIDE ONE (1) (N) DATA DROP AT (N) CLOCK/SPEAKER COMBO BOX. ROUTE THROUGH EXISTING WIREMOLD.
 - PROVIDE (N) SPEAKER WITH (N) CLASSROOM IP MODULE) AND (N) IP CLOCK MOUNTED IN (N) CLOCK/ SPEAKER COMBO BOX. PROVIDE ONE (1) (N) CAT6A DATA DROP.
 - REPLACE (E) EXTERIOR SPEAKER WITH (N) BACKBOX AND (N) SPEAKER. PROVIDE (N) INTERIOR ENCLOSURE WITH (N) CLASSROOM IP MODULE. PROVIDE ONE (1) (N) CAT6A DATA DROP.
 - PROVIDE (N) CEILING MOUNTED BACKBOX AND (N) SPEAKER (WITH (N) IP CLASSROOM MODULE) AT (E) CEILING DATA DROP LOCATION.
 - PROVIDE (N) WALL MOUNTED BACK BOX AND (N) SPEAKER (WITH (N) IP CLASSROOM MODULE). PROVIDE ONE (1) (N) CAT6A DATA DROP.
 - PROVIDE (N) WALL MOUNTED EXTERIOR BACKBOX AND (N) EXTERIOR SPEAKER. PROVIDE (N) INTERIOR ENCLOSURE WITH (N) CLASSROOM IP MODULE. PROVIDE ONE (1) (N) CAT6A DATA DROP.
 - PROVIDE (N) LARGE MESSAGE BOARD AT (E) DATA DROP LOCATION. REMOVE (E) WIREMOLD DUPLEX BOX, REWORK DATA DROP INTO DISPLAY BOARD BACKBOX.
 - REPLACE (E) SPEAKER AND (E) CLOCK WITH (N) SPEAKER (WITH (N) CLASSROOM IP MODULE) AND (N) IP CLOCK MOUNTED IN (N) CLOCK/ SPEAKER COMBO BOX AT (E) CLOCK LOCATION. BLANK OVER (E) CLOCK AND (E) SPEAKER LOCATION AS REQUIRED. LOCATE EXISTING DATA DROP ABOVE DROP CEILING AND ROUTE TO (N) COMBO BOX.
 - NEW DIGITAL OFFICE CLOCK. REWORK (E) DATA DROP INTO (N) DIGITAL CLOCK VIA APPROPRIATE WIREMOLD TRANSITION.
 - (E) CLOCK / BELL HEADEND. CONTRACTOR TO REMOVE AND INSTALL A NEW TACK BOARD ON HINGES TO COVER THE BACK BOX.
 - (E) TELECENTER ICS TO BE REMOVED AFTER CUTOVER TO (N) SYSTEM. REMOVE ALL (E) CABLES, 66-BLOCKS, AND CABINET.
 - INSTALL (N) INTERCOM SPEAKER ABOVE CLOCK.
 - PROVIDE (N) 4 PAIR COPPER FEEDER FROM MPOE TO MDF. TERMINATE INDIVIDUAL PAIRS ON CENTER PINS OF KEYSTONE JACKS. LAND IN (E) PATCH PANEL AT MDF. AND IN (N) SURFACE BOX AT MPOE.

- CEILING CONDITION CHART:**
- | | |
|---|------------------------|
| ① | DROP IN CEILING TILES. |
| ② | HARD LID CEILING. |



TECHNOLOGY FLOOR PLANS - IDF 1.01 AND 1.02
SCALE: 1/8"=1'

Copyright © 2023
These drawings and specifications and the ideas, designs and arrangements represented thereby are and shall remain the property of KMM Services, Inc. and no part thereof shall be copied, disclosed, or used in connection with any other work or project other than the specific project for which they have been prepared and developed without the written consent of KMM Services, Inc. Visual contact with these drawings or specifications shall constitute conclusive evidence of these restrictions.

IF DRAWING IS NOT 30"x42" IT IS A REDUCED PRINT

SHEET REVISIONS

DELTA	DESCRIPTION	DATE

SITE KEY PLAN

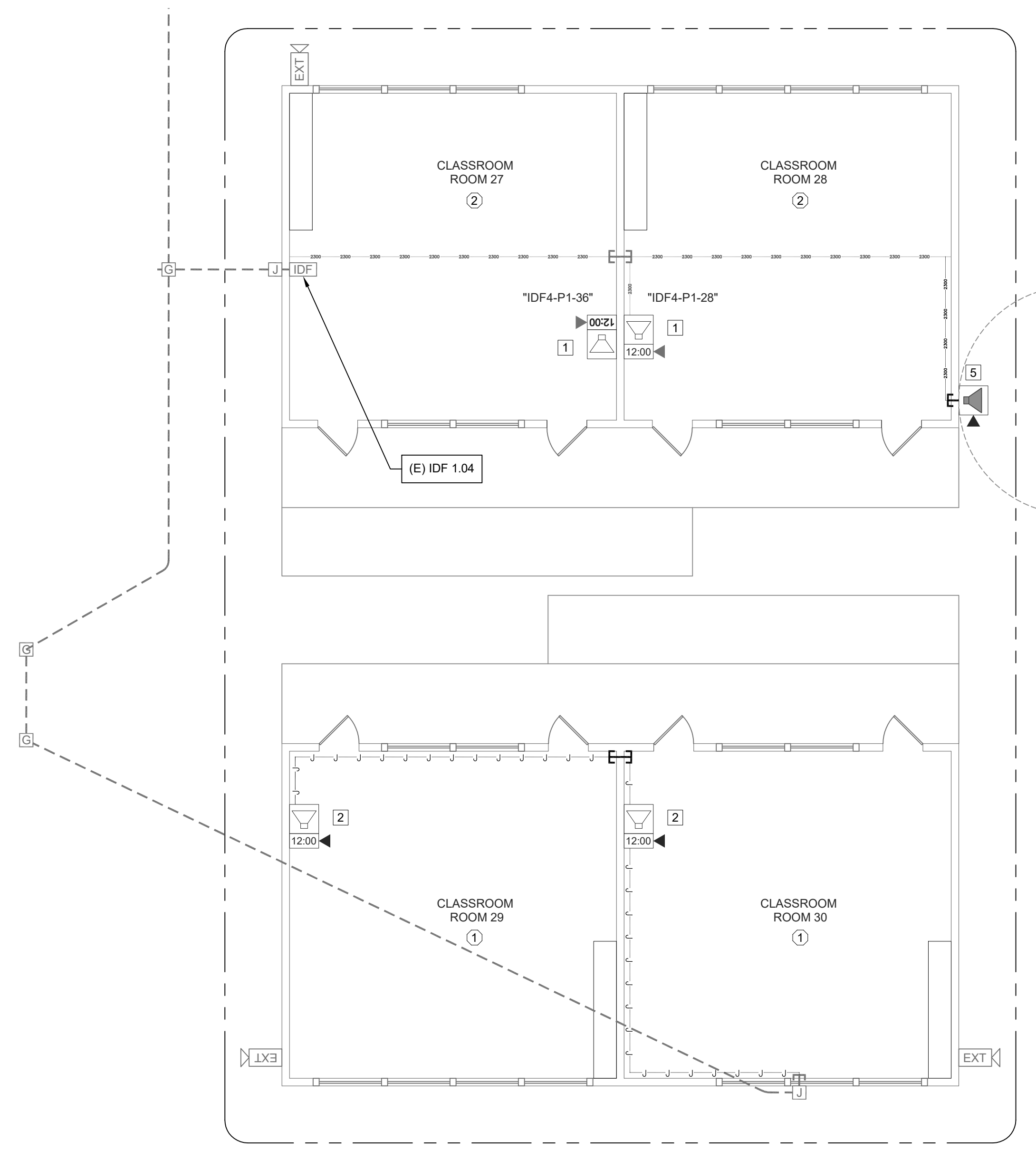
PROJECT
SACRAMENTO CITY USD
JOSEPH BONNHEIM E.S.
**TELE-CENTER
UPGRADE PROJECT**
7300 MARIN AVE.
SACRAMENTO, CA. 95820

SHEET TITLE
TECHNOLOGY
FLOOR PLANS
- IDF 1.01 AND 1.02

DRAWING STATUS
CONSTRUCTION DOCUMENTS

PROJECT NO:	0183-464
BID PACKAGE:	TBD
DESIGNED BY:	RK/CC
CHECKED BY:	JG
ISSUE DATE:	2023-05-09
WORKING DATE:	2023-05-09
REVISION	
SHEET	T201

LogIn Name: good
 Plot Date: May 11, 2023 - 3:09 PM
 User: SCJSTL_AJCN/T202_Floor Plans.dwg
 XREFS: Main.dwg, Xrefs.dwg



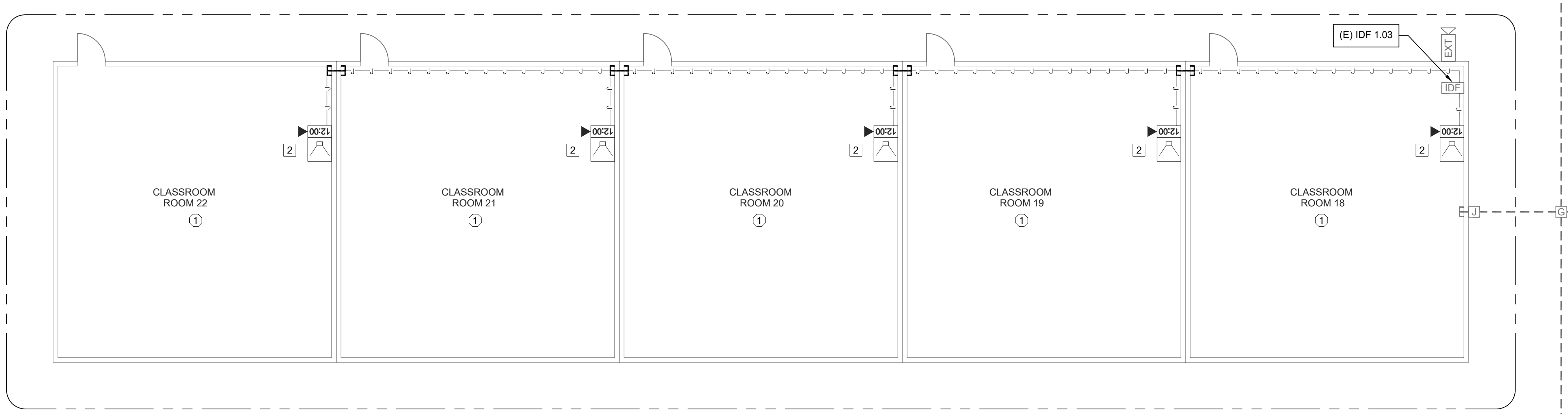
TECHNOLOGY FLOOR PLANS - IDF 1.04



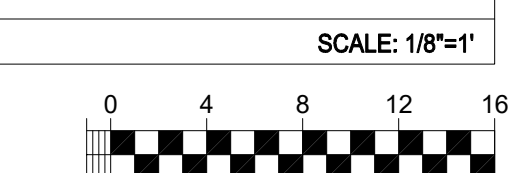
- GENERAL NOTES:**
- NO STRUCTURAL BEAMS SHALL BE PENETRATED OR ALTERED.
 - PROVIDE APPROPRIATE WM5500 TO WM2300 FITTINGS TO EXIT WM5500 TO TRANSITION DOWN TO DROP LOCATIONS.
 - RELOCATE EXISTING INTRUSION DEVICES UP OR DOWN TO ALLOW NEW RACEWAY TO BE INSTALLED. VERIFY THAT THE RELOCATED DEVICE IS NOT CAUSING A FAULT ON THE ALARM PANEL PRIOR TO LEAVING THE SITE.
 - NEW DATA DROPS INSTALLED WILL REQUIRE WM2300 INSTALLED TO EACH LOCATION.

- SHEET NOTES:**
- REPLACE (E) SPEAKER AND (E) CLOCK WITH (N) SPEAKER (WITH (N) CLASSROOM IP MODULE) AND (N) IP CLOCK MOUNTED IN (N) CLOCK/ SPEAKER COMBO BOX AT (E) CLOCK DATA DROP LOCATION. REMOVE WIREMOLD DUPLEX BOX, REWORK DATA DROP INTO CLOCK/SPEAKER COMBO BOX, BLANK OVER (E) CLOCK AND/OR (E) SPEAKER LOCATION AS REQUIRED.
 - REPLACE (E) SPEAKER AND (E) CLOCK WITH (N) SPEAKER (WITH (N) CLASSROOM IP MODULE) AND (N) IP CLOCK MOUNTED IN (N) CLOCK/ SPEAKER COMBO BOX AT (E) CLOCK LOCATION. BLANK OVER (E) CLOCK AND (E) SPEAKER LOCATION AS REQUIRED. PROVIDE ONE (1) (N) CAT6A DATA DROP.
 - PROVIDE (N) SPEAKER (WITH (N) CLASSROOM IP MODULE) AND (N) IP CLOCK MOUNTED IN (N) CLOCK/ SPEAKER COMBO BOX AT (E) CLOCK DATA DROP LOCATION. PROVIDE ONE (1) (N) DATA DROP AT (N) CLOCK/SPEAKER COMBO BOX. ROUTE THROUGH EXISTING WIREMOLD.
 - PROVIDE (N) SPEAKER WITH (N) CLASSROOM IP MODULE) AND (N) IP CLOCK MOUNTED IN (N) CLOCK/ SPEAKER COMBO BOX. PROVIDE ONE (1) (N) CAT6A DATA DROP.
 - REPLACE (E) EXTERIOR SPEAKER WITH (N) BACKBOX AND (N) SPEAKER. PROVIDE (N) INTERIOR ENCLOSURE WITH (N) CLASSROOM IP MODULE. PROVIDE ONE (1) (N) CAT6A DATA DROP.
 - PROVIDE (N) CEILING MOUNTED BACKBOX AND (N) SPEAKER (WITH (N) IP CLASSROOM MODULE) AT (E) CEILING DATA DROP LOCATION.
 - PROVIDE (N) WALL MOUNTED BACK BOX AND (N) SPEAKER (WITH (N) IP CLASSROOM MODULE). PROVIDE ONE (1) (N) CAT6A DATA DROP.
 - PROVIDE (N) WALL MOUNTED EXTERIOR BACKBOX AND (N) EXTERIOR SPEAKER. PROVIDE (N) INTERIOR ENCLOSURE WITH (N) CLASSROOM IP MODULE. PROVIDE ONE (1) (N) CAT6A DATA DROP.
 - PROVIDE (N) LARGE MESSAGE BOARD AT (E) DATA DROP LOCATION. REMOVE (E) WIREMOLD DUPLEX BOX, REWORK DATA DROP INTO DISPLAY BOARD BACKBOX.
 - REPLACE (E) SPEAKER AND (E) CLOCK WITH (N) SPEAKER (WITH (N) CLASSROOM IP MODULE) AND (N) IP CLOCK MOUNTED IN (N) CLOCK/ SPEAKER COMBO BOX AT (E) CLOCK LOCATION. BLANK OVER (E) CLOCK AND (E) SPEAKER LOCATION AS REQUIRED. LOCATE EXISTING DATA DROP ABOVE DROP CEILING AND ROUTE TO (N) COMBO BOX.
 - NEW DIGITAL OFFICE CLOCK. REWORK (E) DATA DROP INTO (N) DIGITAL CLOCK VIA APPROPRIATE WIREMOLD TRANSITION.
 - (E) CLOCK / BELL HEADEND. CONTRACTOR TO REMOVE AND INSTALL A NEW TACK BOARD ON HINGES TO COVER THE BACK BOX.
 - (E) TELECENTER ICS TO BE REMOVED AFTER CUTOVER TO (N) SYSTEM. REMOVE ALL (E) CABLES, 66-BLOCKS, AND CABINET.
 - INSTALL (N) INTERCOM SPEAKER ABOVE CLOCK.
 - PROVIDE (N) 4 PAIR COPPER FEEDER FROM MPOE TO MDF. TERMINATE INDIVIDUAL PAIRS ON CENTER PINS OF KEYSTONE JACKS. LAND IN (E) PATCH PANEL AT MDF, AND IN (N) SURFACE BOX AT MPOE.

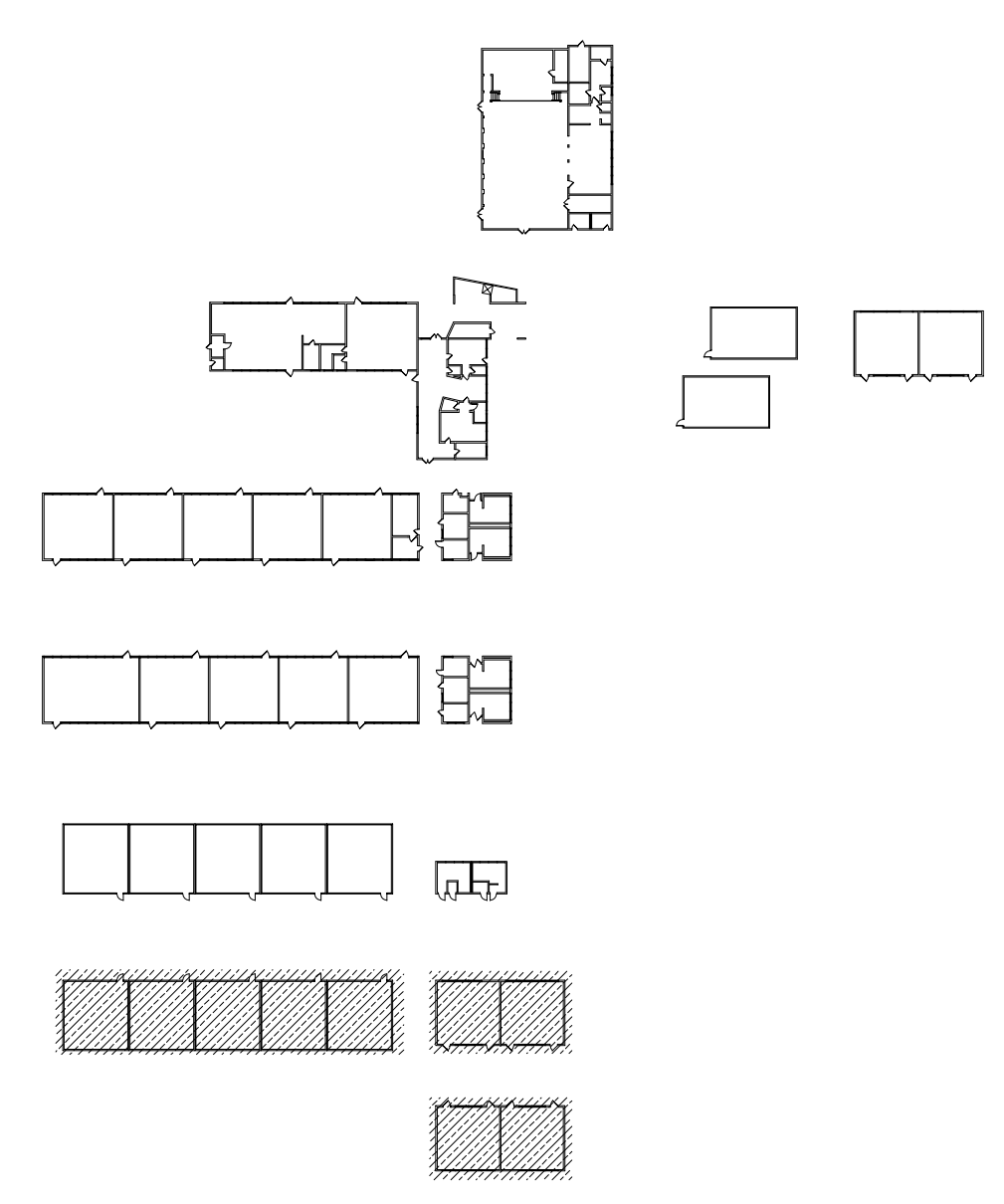
- CEILING CONDITION CHART:**
- ① DROP IN CEILING TILES.
 - ② HARD LID CEILING.



TECHNOLOGY FLOOR PLAN - IDF 1.03

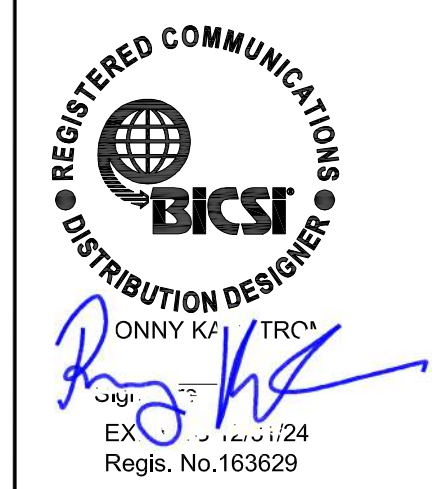


KEY PLAN



KMM SERVICES, INC
 TECHNOLOGY & FIRE LIFE SAFETY

5433 El Camino Ave. Suite 5
 Carmichael, CA 95608
 Office: (916) 359-4000 www.kmm-services.com



Copyright © 2023
 These drawings and specifications and the ideas, designs and arrangements represented thereby are and shall remain the property of KMM Services, Inc. and no part thereof shall be copied, disclosed, or used in connection with any other work or project other than the specific project for which they have been prepared and developed without the written consent of KMM Services, Inc. Visual contact with these drawings or specifications shall constitute conclusive evidence of these restrictions.

IF DRAWING IS NOT 30"x42" IT IS A REDUCED PRINT

SHEET REVISIONS

DELTA	DESCRIPTION	DATE

SITE KEY PLAN

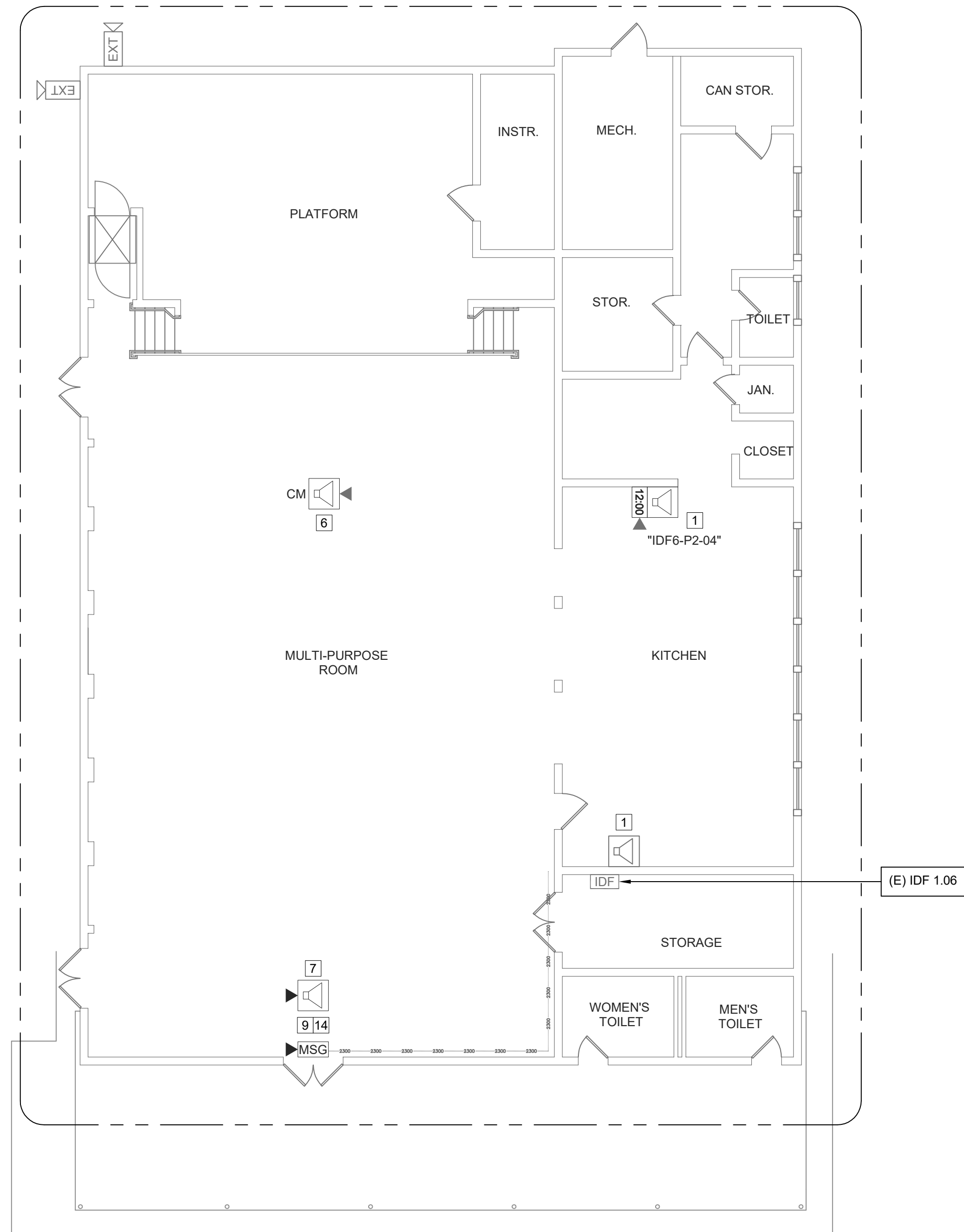
PROJECT
**SACRAMENTO CITY USD
 JOSEPH BONNHEIM E.S.**
 TELE-CENTER
 UPGRADE PROJECT
 7300 MARIN AVE.
 SACRAMENTO, CA. 95820

SHEET TITLE
**TECHNOLOGY
 FLOOR PLANS
 - IDF 1.03 AND 1.04**

DRAWING STATUS
CONSTRUCTION DOCUMENTS

PROJECT NO:	0183-464
BID PACKAGE:	TBD
DESIGNED BY:	RK/CC
CHECKED BY:	JG
ISSUE DATE:	2023-05-09
WORKING DATE:	2023-05-09

REVISION
 SHEET **T202**

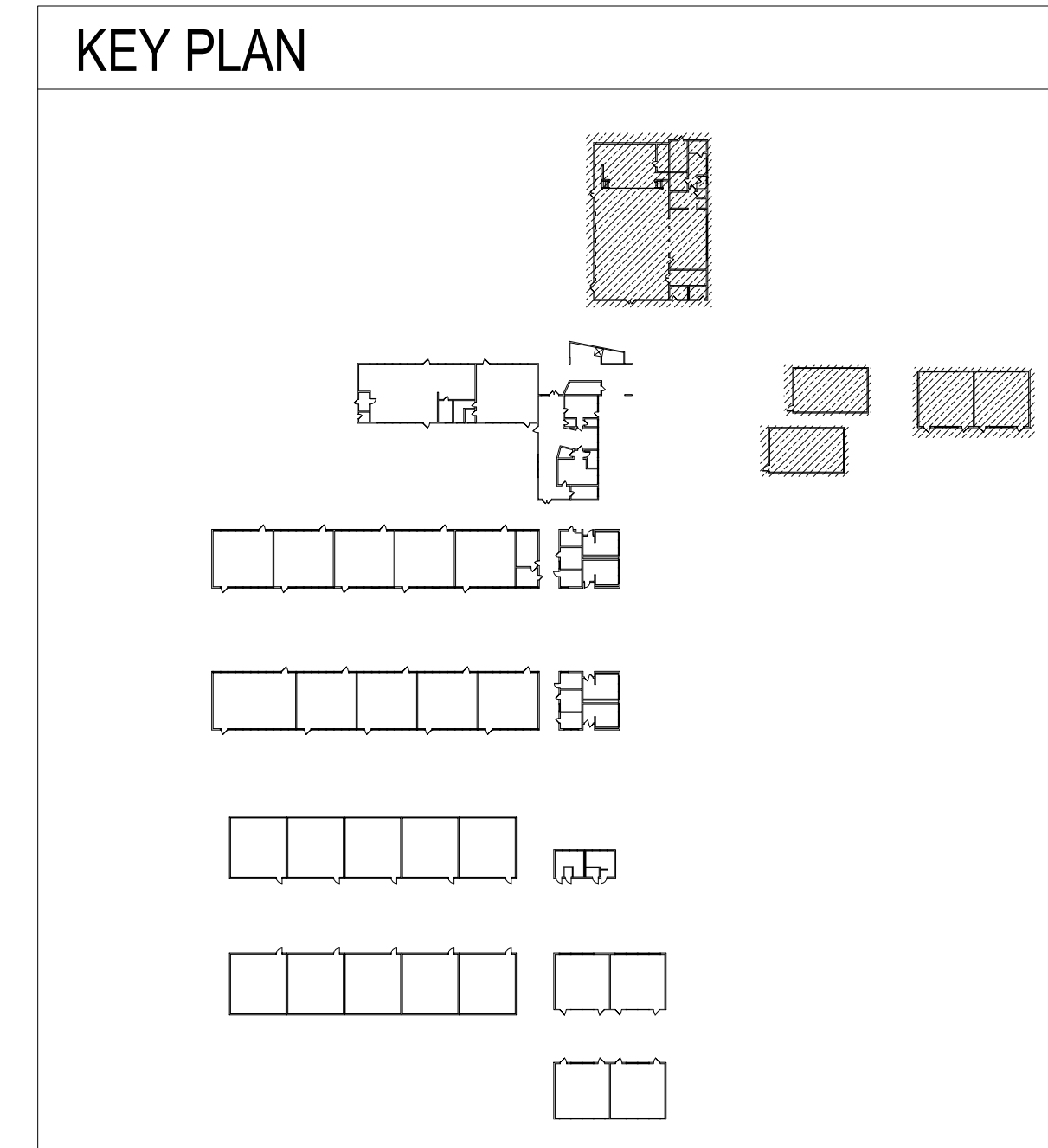
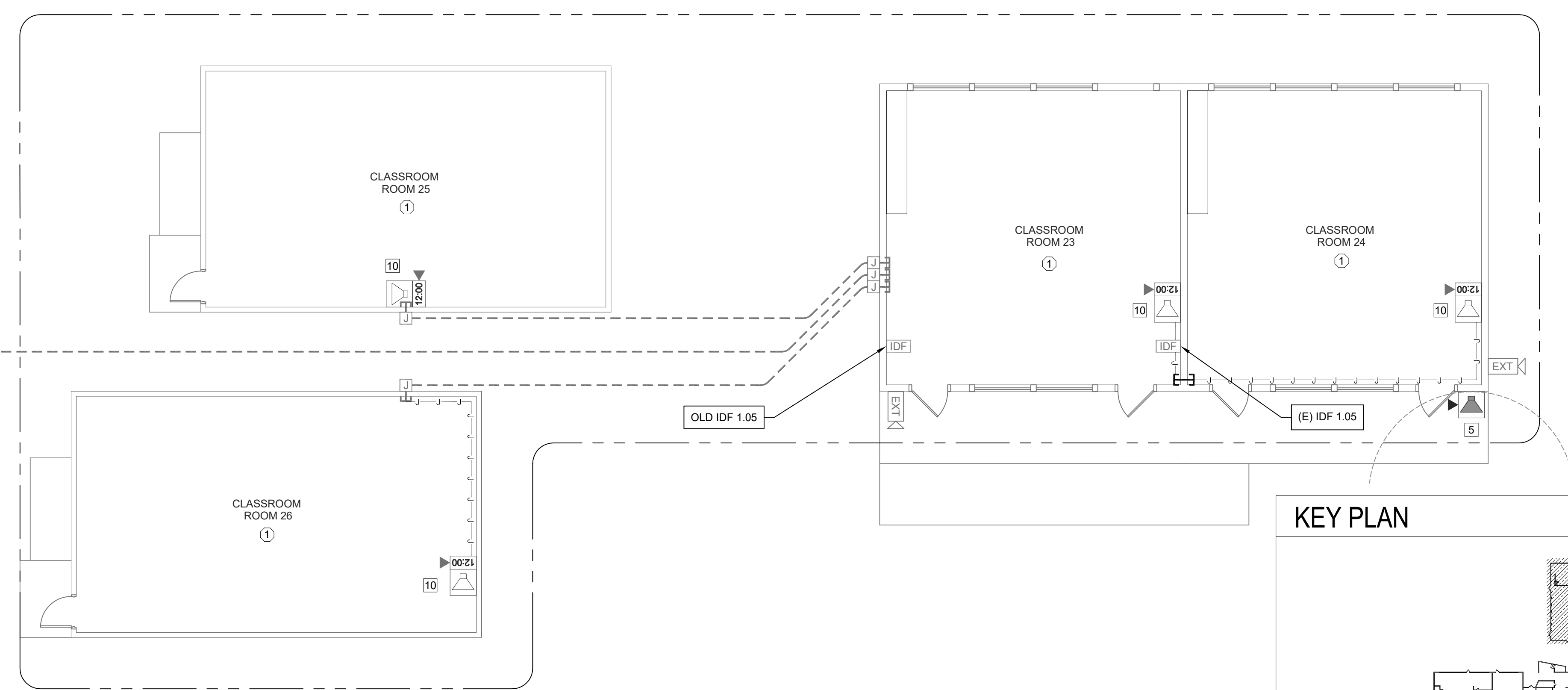


- SHEET NOTES:**
- REPLACE (E) SPEAKER AND (E) CLOCK WITH (N) SPEAKER (WITH (N) CLASSROOM IP MODULE) AND (N) IP CLOCK MOUNTED IN (N) CLOCK/SPEAKER COMBO BOX AT (E) CLOCK DATA DROP LOCATION. REMOVE WIREMOLD DUPLEX BOX, REWORK DATA DROP INTO CLOCK/SPEAKER COMBO BOX. BLANK OVER (E) CLOCK AND/OR (E) SPEAKER LOCATION AS REQUIRED.
 - REPLACE (E) SPEAKER AND (E) CLOCK WITH (N) SPEAKER (WITH (N) CLASSROOM IP MODULE) AND (N) IP CLOCK MOUNTED IN (N) CLOCK/SPEAKER COMBO BOX AT (E) CLOCK LOCATION. BLANK OVER (E) CLOCK AND (E) SPEAKER LOCATION AS REQUIRED. PROVIDE ONE (1) (N) CAT6A DATA DROP.
 - PROVIDE (N) SPEAKER (WITH (N) CLASSROOM IP MODULE) AND (N) IP CLOCK MOUNTED IN (N) CLOCK/SPEAKER COMBO BOX AT (E) CLOCK DATA DROP LOCATION. PROVIDE ONE (1) (N) DATA DROP AT (N) CLOCK/SPEAKER COMBO BOX. ROUTE THROUGH EXISTING WIREMOLD.
 - PROVIDE (N) SPEAKER WITH (N) CLASSROOM IP MODULE) AND (N) IP CLOCK MOUNTED IN (N) CLOCK/SPEAKER COMBO BOX. PROVIDE ONE (1) (N) CAT6A DATA DROP.
 - REPLACE (E) EXTERIOR SPEAKER WITH (N) BACKBOX AND (N) SPEAKER. PROVIDE (N) INTERIOR ENCLOSURE WITH (N) CLASSROOM IP MODULE. PROVIDE ONE (1) (N) CAT6A DATA DROP.
 - PROVIDE (N) CEILING MOUNTED BACKBOX AND (N) SPEAKER (WITH (N) IP CLASSROOM MODULE) AT (E) CEILING DATA DROP LOCATION.
 - PROVIDE (N) WALL MOUNTED BACK BOX AND (N) SPEAKER (WITH (N) IP CLASSROOM MODULE). PROVIDE ONE (1) (N) CAT6A DATA DROP.
 - PROVIDE (N) WALL MOUNTED EXTERIOR BACKBOX AND (N) EXTERIOR SPEAKER. PROVIDE (N) INTERIOR ENCLOSURE WITH (N) CLASSROOM IP MODULE. PROVIDE ONE (1) (N) CAT6A DATA DROP.
 - PROVIDE (N) LARGE MESSAGE BOARD AT (E) DATA DROP LOCATION. REMOVE (E) WIREMOLD DUPLEX BOX, REWORK DATA DROP INTO DISPLAY BOARD BACKBOX.
 - REPLACE (E) SPEAKER AND (E) CLOCK WITH (N) SPEAKER (WITH (N) CLASSROOM IP MODULE) AND (N) IP CLOCK MOUNTED IN (N) CLOCK/SPEAKER COMBO BOX AT (E) CLOCK LOCATION. BLANK OVER (E) CLOCK AND (E) SPEAKER LOCATION AS REQUIRED. LOCATE EXISTING DATA DROP ABOVE DROP CEILING AND ROUTE TO (N) COMBO BOX.
 - NEW DIGITAL OFFICE CLOCK. REWORK (E) DATA DROP INTO (N) DIGITAL CLOCK VIA APPROPRIATE WIREMOLD TRANSITION.
 - (E) CLOCK / BELL HEADEND. CONTRACTOR TO REMOVE AND INSTALL A NEW TACK BOARD ON HINGES TO COVER THE BACK BOX.
 - (E) TELECENTER (CS) TO BE REMOVED AFTER CUTOVER TO (N) SYSTEM. REMOVE ALL (E) CABLES, 66-BLOCKS, AND CABINET.
 - INSTALL (N) INTERCOM SPEAKER ABOVE CLOCK.
 - PROVIDE (N) 4 PAIR COPPER FEEDER FROM MPOE TO MDF. TERMINATE INDIVIDUAL PAIRS ON CENTER PINS OF KEYSTONE JACKS. LAND IN (E) PATCH PANEL AT MDF, AND IN (N) SURFACE BOX AT MPOE.

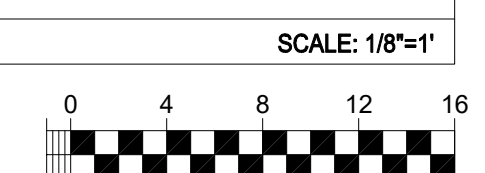
- GENERAL NOTES:**
- NO STRUCTURAL BEAMS SHALL BE PENETRATED OR ALTERED.
 - PROVIDE APPROPRIATE WM5500 TO WM2300 FITTINGS TO EXIT WM5500 TO TRANSITION DOWN TO DROP LOCATIONS.
 - RELOCATE EXISTING INTRUSION DEVICES UP OR DOWN TO ALLOW NEW RACEWAY TO BE INSTALLED. VERIFY THAT THE RELOCATED DEVICE IS NOT CAUSING A FAULT ON THE ALARM PANEL PRIOR TO LEAVING THE SITE.
 - NEW DATA DROPS INSTALLED WILL REQUIRE WM2300 INSTALLED TO EACH LOCATION.

CEILING CONDITION CHART:

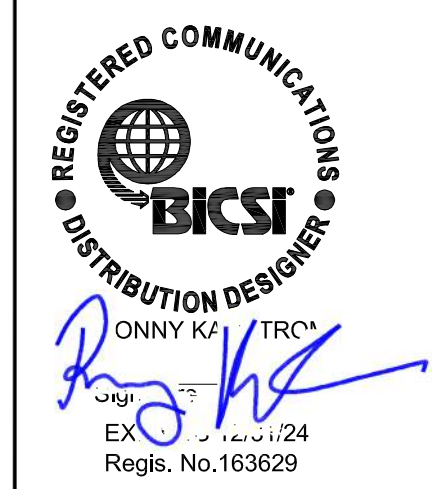
①	DROP IN CEILING TILES.
②	HARD LID CEILING.



TECHNOLOGY FLOOR PLANS - IDF 1.05 AND 1.06



KMM SERVICES, INC
 TECHNOLOGY & FIRE LIFE SAFETY
 5433 El Camino Ave. Suite 5
 Carmichael, CA 95608
 Office: (916) 359-4000 www.kmm.com



Copyright © 2023
 These drawings and specifications and the ideas, designs and arrangements represented thereby are and shall remain the property of KMM Services, Inc. and no part thereof shall be copied, disclosed to others, or used in connection with any other work or project other than the specific project for which they have been prepared and developed without the written consent of KMM Services, Inc. Visual contact with these drawings or specifications shall constitute conclusive evidence of these restrictions.

IF DRAWING IS NOT 30"x42" IT IS A REDUCED PRINT

SHEET REVISIONS

DELTA	DESCRIPTION	DATE

SITE KEY PLAN

PROJECT
SACRAMENTO CITY USD JOSEPH BONNHEIM E.S.
 TELE-CENTER
 UPGRADE PROJECT
 7300 MARIN AVE.
 SACRAMENTO, CA. 95820

SHEET TITLE
TECHNOLOGY FLOOR PLANS - IDF 1.05 AND 1.06

DRAWING STATUS
CONSTRUCTION DOCUMENTS

PROJECT NO:	0183-464
BID PACKAGE:	TBD
DESIGNED BY:	RK/CC
CHECKED BY:	JG
ISSUE DATE:	2023-05-09
WORKING DATE:	2023-05-09

REVISION
 SHEET **T203**

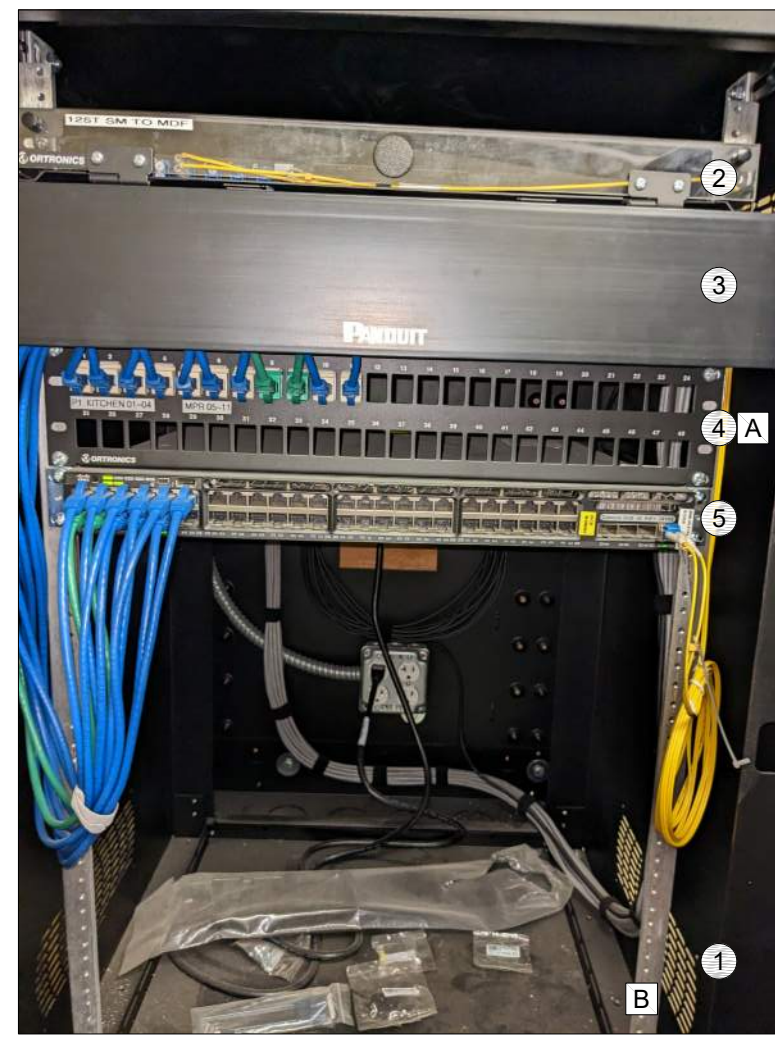
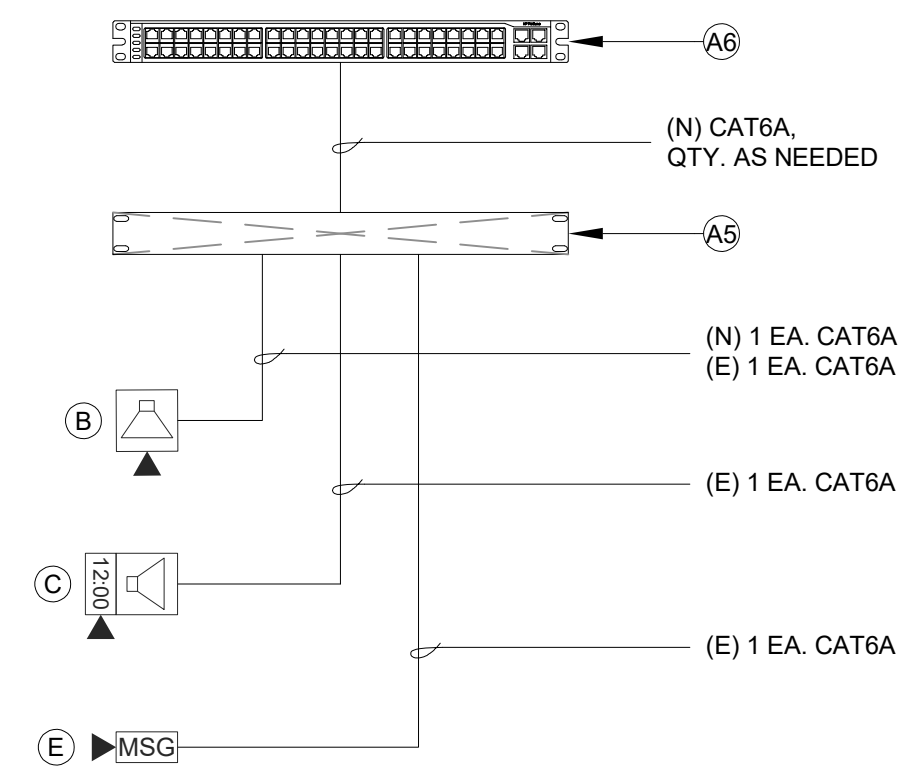
Logi Name: good
 Plot Date: May 11, 2023 - 3:09 PM
 Project: SACRAMENTO CITY USD JOSEPH BONNHEIM E.S. TELE-CENTER UPGRADE PROJECT
 User: R. K. Campbell

EXISTING RACK COMPONENTS:

- 1 18U RACK CABINET.
- 2 1RU FIBER LIU.
- 3 2RU CABLE MANAGER.
- 4 2RU 48-PORT PATCH PANEL (37 AVAIL.).
- 5 1RU 48-PORT SWITCH (37 AVAIL.).

RACK SCOPE OF WORK:

- A PROVIDE (N) CAT6A PATCH CORDS FOR ALL (N) CAT6A DATA DROPS.
 B PROVIDE (N) UPS, N1C P/N N1C.L1000. ROUTE POWER SO THAT ALL RACK COMPONENTS ARE PROTECTED BY UPS.



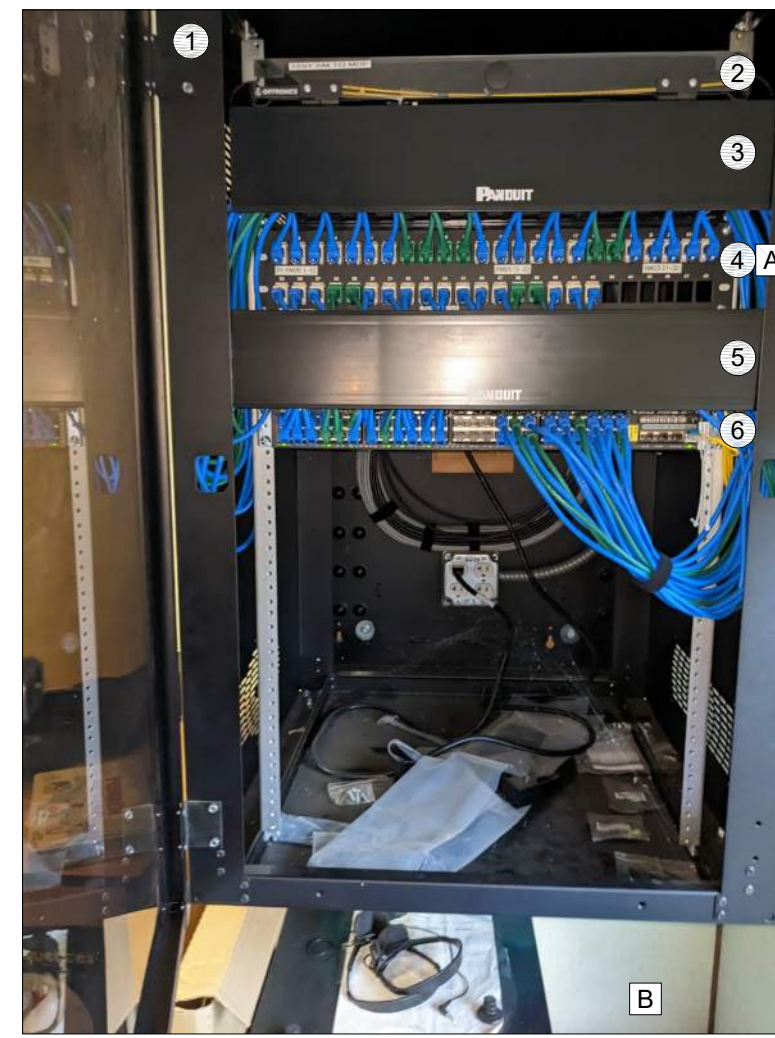
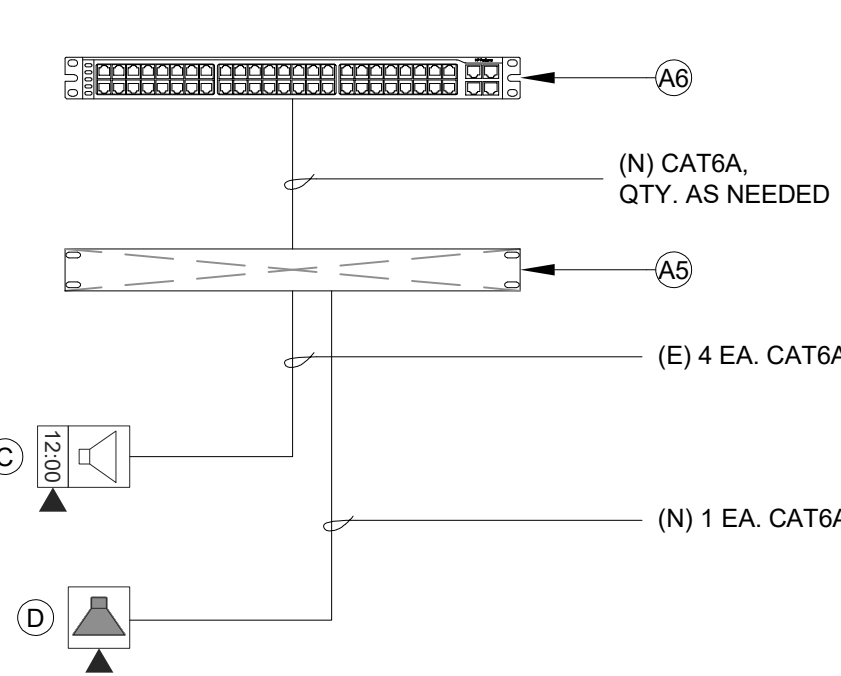
7 DATA RACK LAYOUT - (E) IDF 1.06 - MP ROOM STORAGE
SCALE: NONE

EXISTING RACK COMPONENTS:

- 1 18U RACK CABINET.
- 2 1RU FIBER LIU.
- 3 2RU CABLE MANAGER.
- 4 2RU 48-PORT PATCH PANEL (6 AVAIL.).
- 5 2RU CABLE MANAGER.
- 6 1RU 48-PORT SWITCH (6 AVAIL.).

RACK SCOPE OF WORK:

- A PROVIDE (N) CAT6A PATCH CORDS FOR ALL (N) CAT6A DATA DROPS.
 B PROVIDE (N) UPS, N1C P/N N1C.L1000. ROUTE POWER SO THAT ALL RACK COMPONENTS ARE PROTECTED BY UPS.



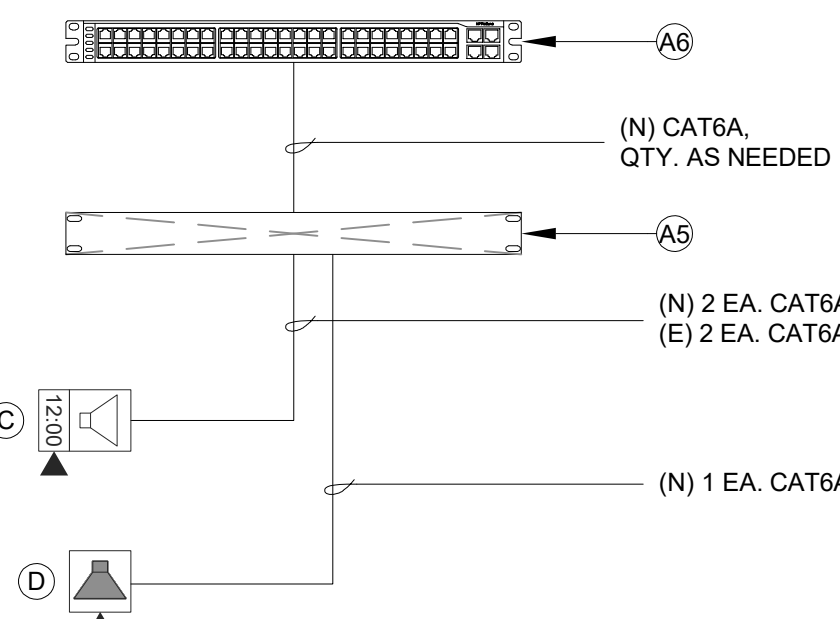
6 DATA RACK LAYOUT - (E) IDF 1.05 - CLASSROOM 23
SCALE: NONE

EXISTING RACK COMPONENTS:

- 1 18U RACK CABINET.
- 2 1RU FIBER LIU.
- 3 2RU CABLE MANAGER.
- 4 2RU 48-PORT PATCH PANEL (12 AVAIL.).
- 5 1RU 48-PORT SWITCH (12 AVAIL.).

RACK SCOPE OF WORK:

- A PROVIDE (N) CAT6A PATCH CORDS FOR ALL (N) CAT6A DATA DROPS.
 B PROVIDE (N) UPS, N1C P/N N1C.L1000. ROUTE POWER SO THAT ALL RACK COMPONENTS ARE PROTECTED BY UPS.



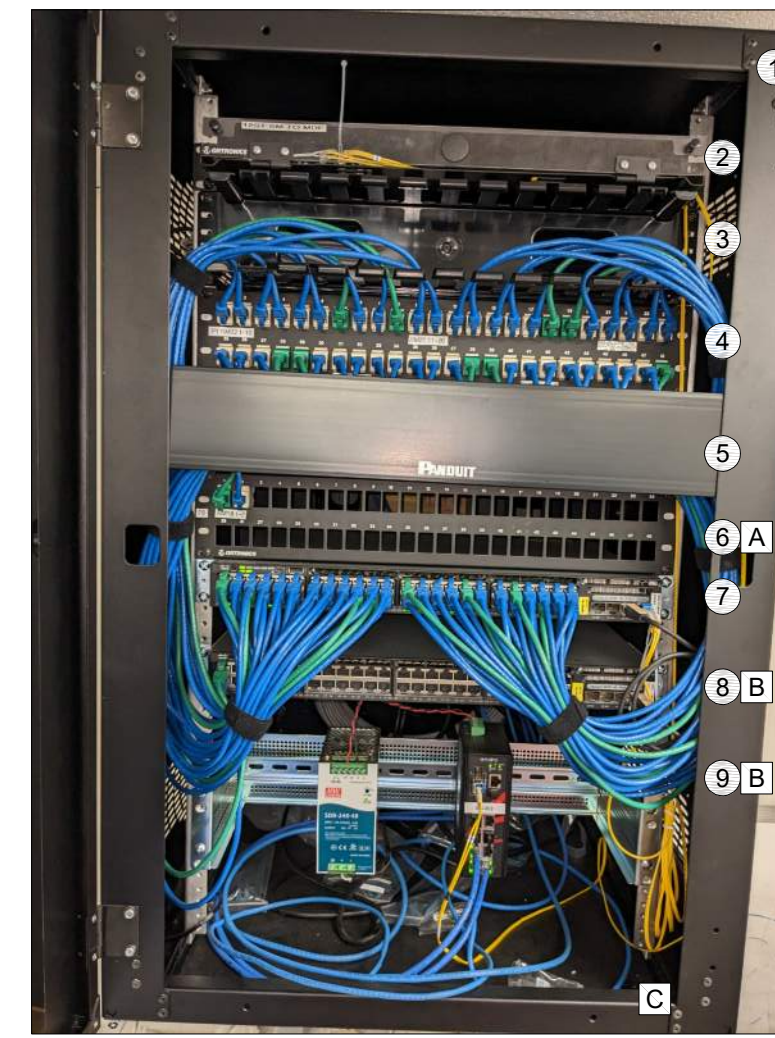
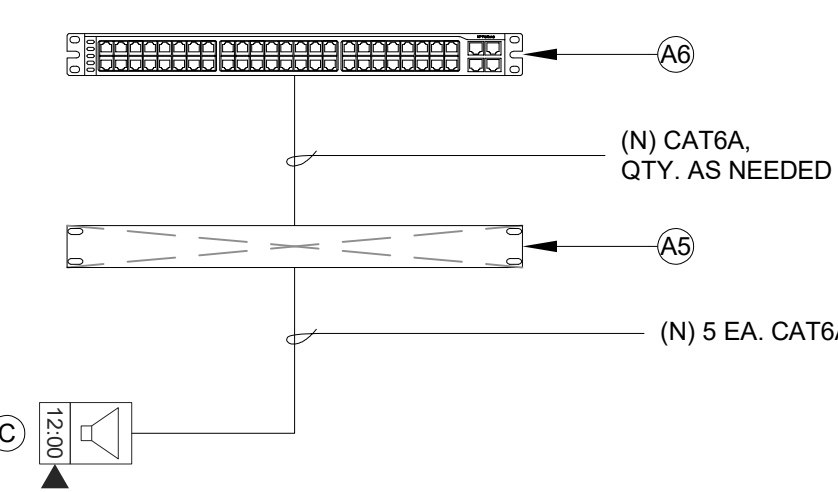
5 DATA RACK LAYOUT - (E) IDF 1.04 - CLASSROOM 27
SCALE: NONE

EXISTING RACK COMPONENTS:

- 1 18U RACK CABINET.
- 2 1RU FIBER LIU.
- 3 2RU CABLE MANAGER.
- 4 2RU 48-PORT PATCH PANEL (0 AVAIL.).
- 5 2RU CABLE MANAGER.
- 6 2RU 48-PORT PATCH PANEL (46 AVAIL.).
- 7 1RU 48-PORT SWITCH (0 AVAIL.).
- 8 1RU 48-PORT SWITCH (46 AVAIL.).
- 9 4RU CCTV SWITCH.

RACK SCOPE OF WORK:

- A PROVIDE (N) CAT6A PATCH CORDS FOR ALL (N) CAT6A DATA DROPS.
 B RELOCATE (E) SWITCH #8 AND #9 UP ONE RACK UNIT.
 C PROVIDE (N) UPS, N1C P/N N1C.L1000. ROUTE POWER SO THAT ALL RACK COMPONENTS ARE PROTECTED BY UPS.



4 DATA RACK LAYOUT - (E) IDF 1.03 - CLASSROOM 18
SCALE: NONE

EQUIPMENT INTERCOM SCHEDULE:
ALL EQUIPMENT AND MATERIALS ARE CONTRACTOR FURNISHED, INSTALLED AND CONFIGURED (UNO)

SYMBOL	DESCRIPTION	MODEL	PART NUMBER	NOTES / DETAIL REFERENCES
A1	TELECENTER U IP CONTROLLER	RAULAND	TCC2000	N/A
A2	TELECENTER U ADMIN CONSOLE		TCC2045	N/A
A3	TELECENTER U AUX. IN/OUT. MODULE		TCC2033	N/A
	UNIVERSAL RACK MOUNTING KIT		TCC2099	N/A
A4	TELECENTER U PROGRAM LINE INPUT MODULE		TCC2055	N/A
A5	24-PORT OR 48-PORT PATCH PANEL	SEE DATA SINGLE LINE RACK COMPONENTS BELOW FOR MORE INFORMATION.		(N) OR (E) AS NOTED
A6	48-PORT NETWORK SWITCH	SEE DATA SINGLE LINE RACK COMPONENTS BELOW FOR MORE INFORMATION.		(N) OR (E) AS NOTED

EQUIPMENT SCHEDULE INTERIOR SURFACE SPEAKER:
ALL EQUIPMENT AND MATERIALS ARE CONTRACTOR FURNISHED, INSTALLED AND CONFIGURED (UNO)

DESCRIPTION	MODEL	PART NUMBER	NOTES / DETAIL REFERENCES
TELECENTER U IP CLASSROOM MODULE	RAULAND	TCC2011A	MOUNT INSIDE ENCLOSURE
8 OHM, 8" SPEAKER WITH RJ45 CONNECTOR	RAULAND	US0880	N/A
SPEAKER BAFFLE	RAULAND	ACC1003	N/A
SURFACE MOUNT SPEAKER ENCLOSURE	RAULAND	ACC1112	N/A

EQUIPMENT SCHEDULE INTERIOR SURFACE CLOCK/SPEAKER COMBO:
ALL EQUIPMENT AND MATERIALS ARE CONTRACTOR FURNISHED, INSTALLED AND CONFIGURED (UNO)

DESCRIPTION	MODEL	PART NUMBER	NOTES / DETAIL REFERENCES
TELECENTER U IP CLASSROOM MODULE	RAULAND	TCC2011A	MOUNT IN ENCLOSURE
IP DIGITAL CLOCK	RAULAND	TCC3011S	N/A
BAFFLE ASSEMBLY WITH SPEAKER	RAULAND	ACC3011S	N/A
SURFACE MOUNT ENCLOSURE CLOCK/SPEAKER COMBO	RAULAND	ACC3011SBB	N/A

EQUIPMENT SCHEDULE EXTERIOR SURFACE SPEAKER:
ALL EQUIPMENT AND MATERIALS ARE CONTRACTOR FURNISHED, INSTALLED AND CONFIGURED (UNO)

DESCRIPTION	MODEL	PART NUMBER	NOTES / DETAIL REFERENCES
TELECENTER U IP CLASSROOM MODULE	RAULAND	TCC2011A	MOUNT INSIDE BUILDING
TELECENTER U BREAKOUT MODULE	RAULAND	603101	MOUNT INSIDE BUILDING
8 OHM, 8" MOISTURE RESISTANT SPEAKER	LOWELL	8C10MRB	N/A
GRILLE VANDAL RESISTANT	RAULAND	ACC1012	N/A
SURFACE MOUNT SPEAKER ENCLOSURE	RAULAND	ACC1113	N/A
(N) SURFACE MOUNTED 4 GANG BACKBOX - WHITE	FSR	SMWB-4G-WHT	MOUNT INSIDE BUILDING

EQUIPMENT SCHEDULE INTERIOR SURFACE CLOCK:
ALL EQUIPMENT AND MATERIALS ARE CONTRACTOR FURNISHED, INSTALLED AND CONFIGURED (UNO)

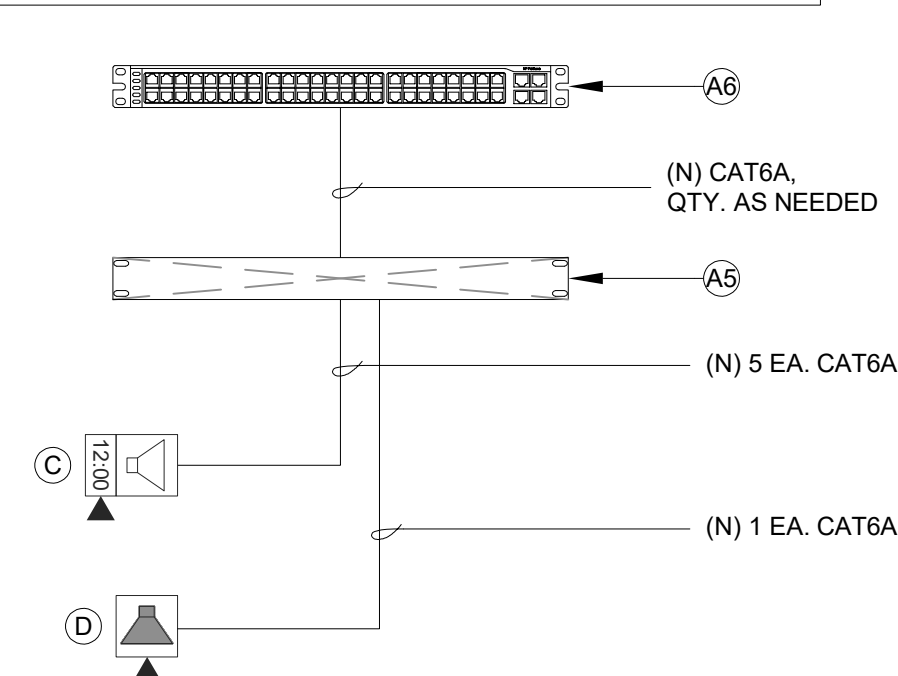
DESCRIPTION	MODEL	PART NUMBER	NOTES / DETAIL REFERENCES
IP DIGITAL CLOCK	SAPLING	SBP-31S-254-0W	ADMIN. ONLY
IP LARGE MESSAGE BOARD	RAULAND	TCC3012L	MP ROOM ONLY

EXISTING RACK COMPONENTS:

- 1 18U RACK CABINET.
- 2 1RU FIBER LIU.
- 3 2RU CABLE MANAGER.
- 4 2RU 48-PORT PATCH PANEL (0 AVAIL.).
- 5 2RU CABLE MANAGER.
- 6 2RU 48-PORT PATCH PANEL (46 AVAIL.).
- 7 1RU 48-PORT SWITCH (0 AVAIL.).
- 8 1RU 48-PORT SWITCH (46 AVAIL.).

RACK SCOPE OF WORK:

- A PROVIDE (N) CAT6A PATCH CORDS FOR ALL (N) CAT6A DATA DROPS.
 B PROVIDE (N) UPS, N1C P/N N1C.L1000. ROUTE POWER SO THAT ALL RACK COMPONENTS ARE PROTECTED BY UPS.



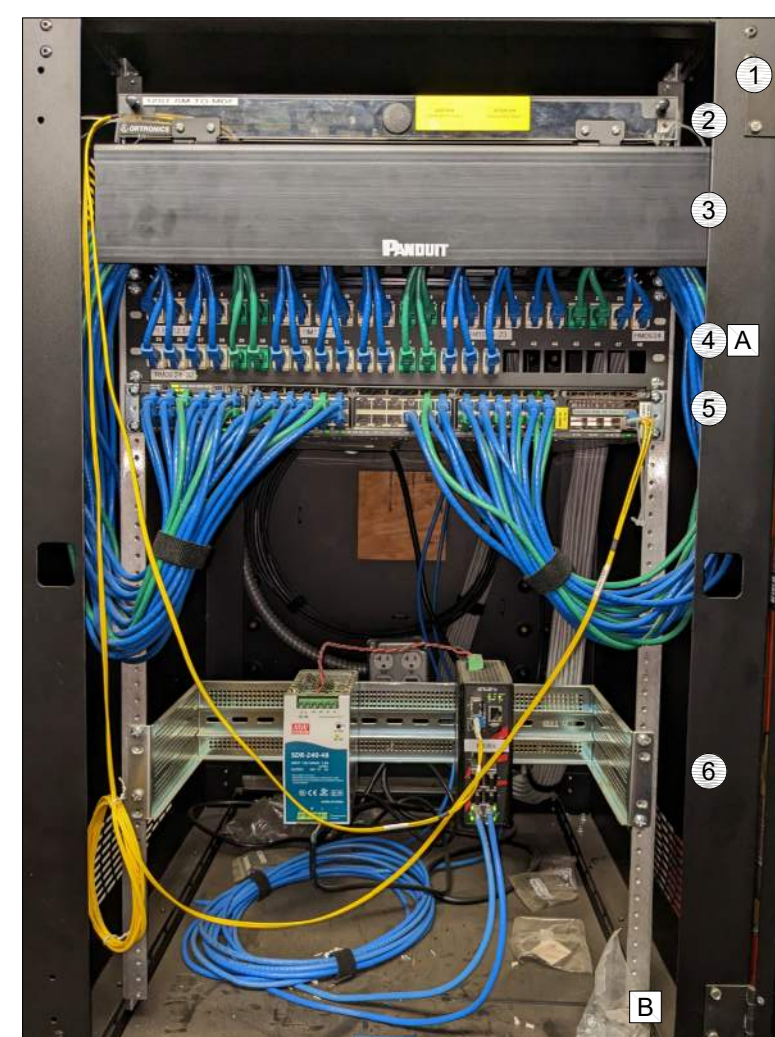
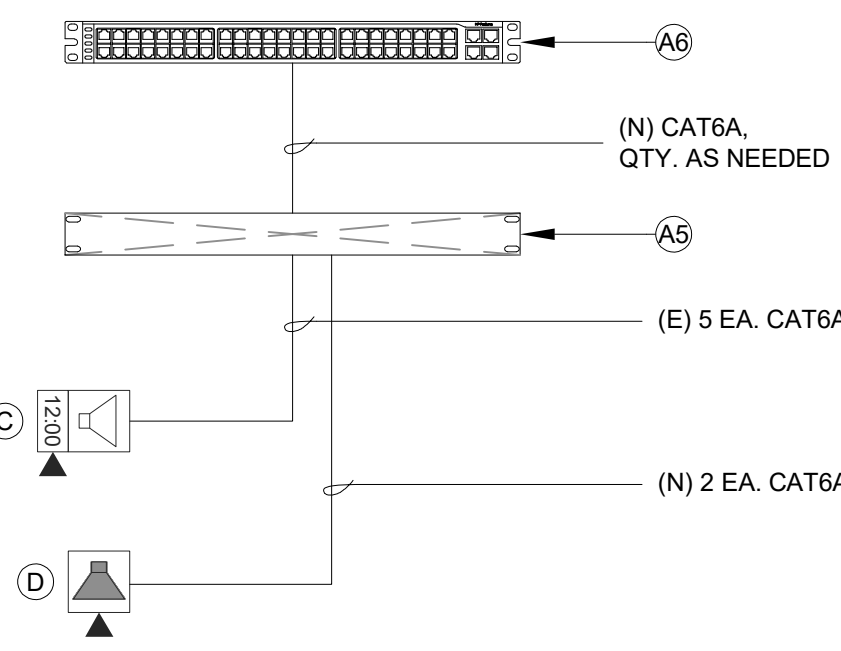
3 DATA RACK LAYOUT - (E) IDF 1.02 - CLASSROOM 13
SCALE: NONE

EXISTING RACK COMPONENTS:

- 1 18U RACK CABINET.
- 2 1RU FIBER LIU.
- 3 2RU CABLE MANAGER.
- 4 2RU 48-PORT PATCH PANEL (7 AVAIL.).
- 5 1RU 48-PORT SWITCH (7 AVAIL.).
- 6 4RU CCTV SWITCH.

RACK SCOPE OF WORK:

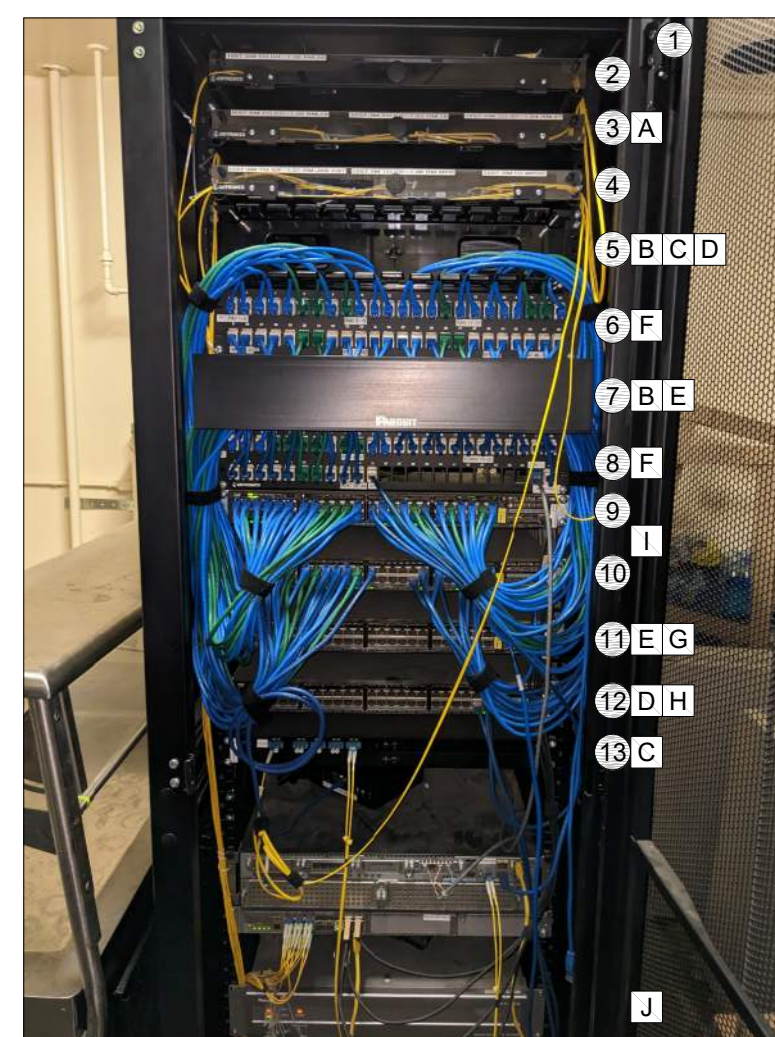
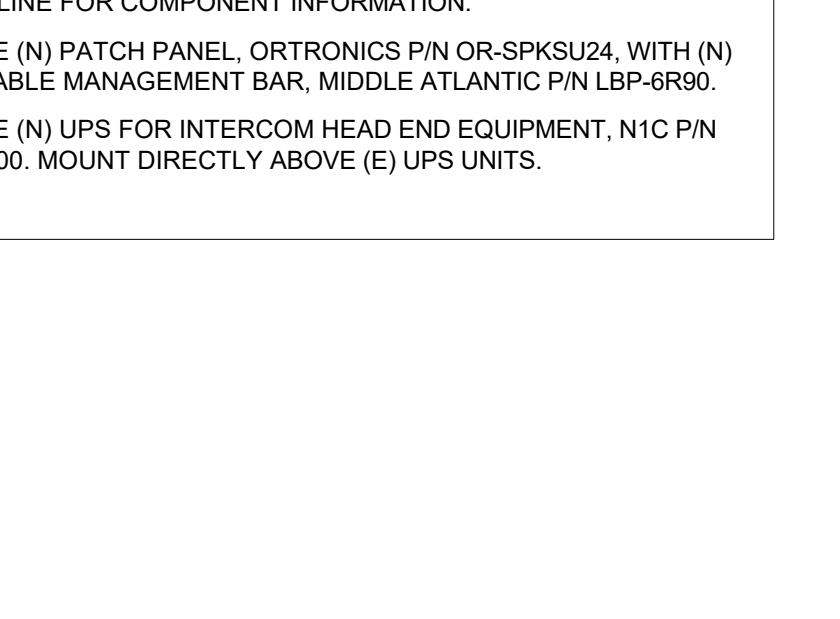
- A PROVIDE (N) CAT6A PATCH CORDS FOR ALL (N) CAT6A DATA DROPS.
 B PROVIDE (N) UPS, N1C P/N N1C.L1000. ROUTE POWER SO THAT ALL RACK COMPONENTS ARE PROTECTED BY UPS.



2 DATA RACK LAYOUT - (E) IDF 1.01 - YARD STORAGE
SCALE: NONE

RACK SCOPE OF WORK:

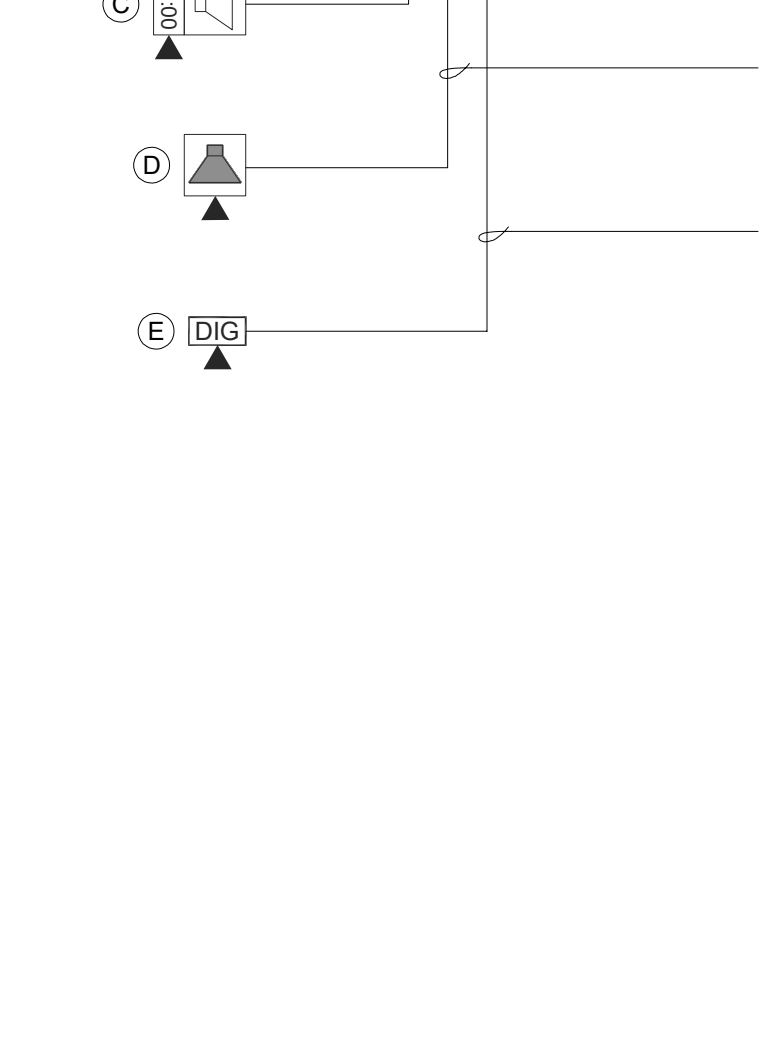
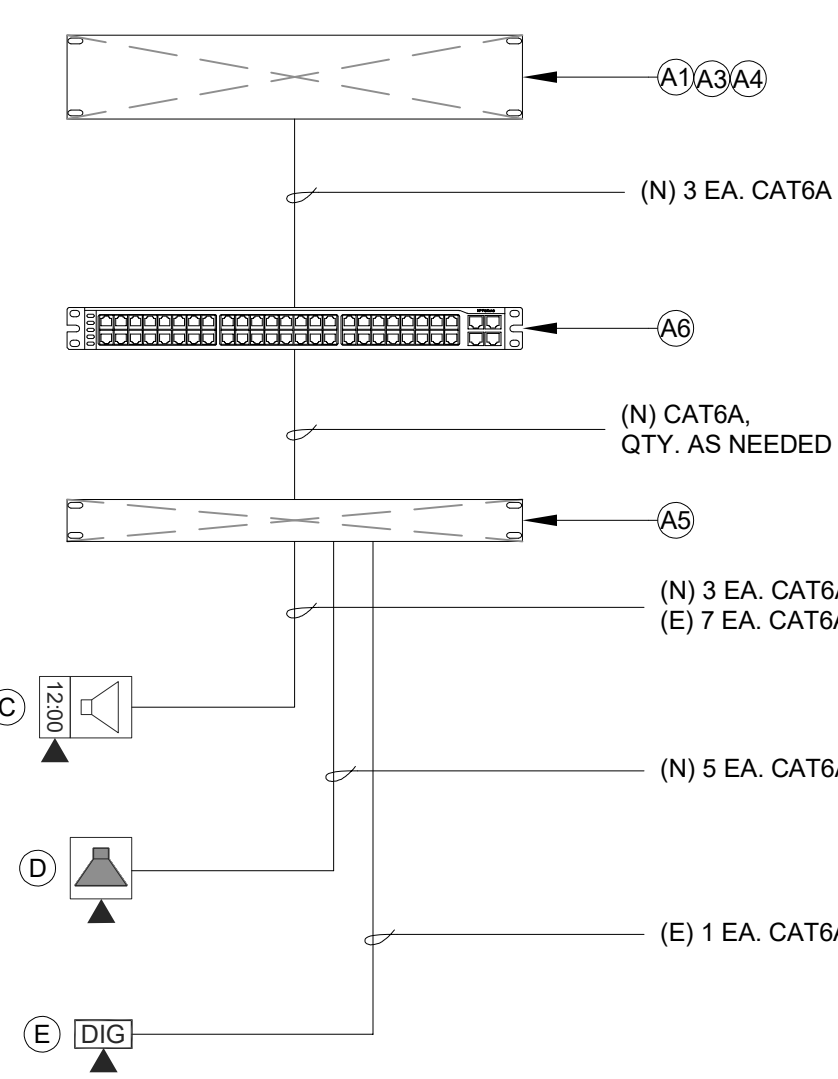
- A - PROVIDE (N) VERTICAL CABLE MANAGER, DAMAC P/N FS32-004, ON LEFT FRONT OF CABINET. ROUTE ALL FIBER PATCH CORDS THROUGH CABLE MANAGER.
 B REMOVE CABLE MANAGER #5 AND #7. PROVIDE (N) REAR CABLE MANAGEMENT BAR, MIDDLE ATLANTIC P/N LBP-6R90, AT PATCH PANEL #6 AND #8.
 C RELOCATE FIBER LIU #13 DIRECTLY UNDER FIBER LIU (#4).
 D RELOCATE SWITCH #12 UNDER FIBER LIU #13 AND ABOVE PATCH PANEL #6.
 E RELOCATE SWITCH #11 BETWEEN PATCH PANELS #6 & #8.
 F PROVIDE (N) SLIMLINE CAT6A 6" PATCH CABLES TO REPLACE ALL (E) PATCH CABLES AND FOR ALL (N) DROPS. PATCH AS FOLLOWS:
 PP #6 - PORTS 1-24 PATCH TO SWITCH #12 PORTS 25-48
 PP #6 PORTS 25-48 PATCH TO SWITCH #11 PORTS 1-24
 PP #8 PORTS 1-24 PATCH TO SWITCH #11 PORTS 25-48
 PP #8 PORTS 25-48 PATCH TO SWITCH #9 PORTS 1-24.
 G REPLACE (E) CCTV MONITOR AT REAR OF RACK WITH NEW KEYBOARD / MONITOR, P/N TRIPPLITE #B021-000-19-HD2, AT FRONT OF RACK BELOW SWITCH #9.
 H MOUNT NEW INTERCOM HEAD END EQUIPMENT. SEE INTERCOM SINGLE LINE FOR COMPONENT INFORMATION.
 I PROVIDE (N) PATCH PANEL, ORTRONICS P/N OR-SPKSU24, WITH (N) REAR CABLE MANAGEMENT BAR, MIDDLE ATLANTIC P/N LBP-6R90.
 J PROVIDE (N) UPS FOR INTERCOM HEAD END EQUIPMENT, N1C P/N N1C.L1000. MOUNT DIRECTLY ABOVE (E) UPS UNITS.



1 DATA RACK LAYOUT - (E) MDF - MDF / JANITOR
SCALE: NONE

EXISTING RACK COMPONENTS:

- 1 7X3' RACK CABINET.
- 2 1RU FIBER LIU.
- 3 1RU FIBER LIU.
- 4 1RU FIBER LIU.
- 5 2RU CABLE MANAGER.
- 6 2RU 48-PORT PATCH PANEL (0 AVAIL.).
- 7 2RU CABLE MANAGER.
- 8 2RU 48-PORT PATCH PANEL (11 AVAIL.).
- 9 1RU 48-PORT SWITCH (0 AVAIL.).
- 10 1RU 48-PORT SWITCH (7 AVAIL.).
- 11 1RU 48-PORT SWITCH (46 AVAIL.).
- 12 1RU 48-PORT SWITCH (46 AVAIL.).
- 13 1RU FIBER LIU.



4 DATA RACK LAYOUT - (E) IDF 1.03 - CLASSROOM 18
SCALE: NONE



KMM SERVICES, INC
TECHNOLOGY & FIRE LIFE SAFETY

5433 El Camino Ave. Suite 5
Carrollwood, CA 95608
Office: (916) 359-4000 www.kmm.com



Copyright © 2023

These drawings and specifications and the ideas, designs and arrangements represented thereby are and shall remain the property of KMM Services, Inc. and no part thereof shall be copied, disclosed to others, or used in connection with any other work or project other than the specific project for which they have been prepared and developed without the written consent of KMM Services, Inc. Visual contact with these drawings or specifications shall constitute conclusive evidence of these restrictions.

IF DRAWING IS NOT 30"x42" IT IS A REDUCED PRINT

SHEET REVISIONS

DELTA	DESCRIPTION	DATE

SITE KEY PLAN



PROJECT
SACRAMENTO CITY USD JOSEPH BONNHHEIM E.S.
TELE-CENTER
UPGRADE PROJECT
7300 MARIN AVE.
SACRAMENTO, CA. 95820

TECHNOLOGY SINGLE LINE DIAGRAMS

DRAWING STATUS
CONSTRUCTION DOCUMENTS

PROJECT NO:	0183-464
BID PACKAGE:	TBD
DESIGNED BY:	RKCC
CHECKED BY:	JG
ISSUE DATE:	2023-05-09
WORKING DATE:	2023-05-09
REVISION	

SHEET T400

Login Name: gbook
 Print Date: May 11, 2023 - 3:09 PM
 File Path: C:\Users\gbook\Desktop\SCS\SCS14_KC\ID1000_Single Line.dwg
 XREFS: NONE

Copyright © 2023

These drawings and specifications and the ideas, designs and arrangements represented thereby are and shall remain the property of KMM Services, Inc. and no part thereof shall be copied, disclosed to others, or used in connection with any other work or project other than the specific project for which they have been prepared and developed without the written consent of KMM Services, Inc. Visual contact with these drawings or specifications shall constitute conclusive evidence of these restrictions.

IF DRAWING IS NOT 30"x42" IT IS A REDUCED PRINT

SHEET REVISIONS

DELTA	DESCRIPTION	DATE

SITE KEY PLAN

PROJECT
**SACRAMENTO CITY USD
JOSEPH BONNHEIM E.S.**
TELE-CENTER
UPGRADE PROJECT
7300 MARIN AVE.
SACRAMENTO, CA. 95820

SHEET TITLE

**TECHNOLOGY
DETAILS**

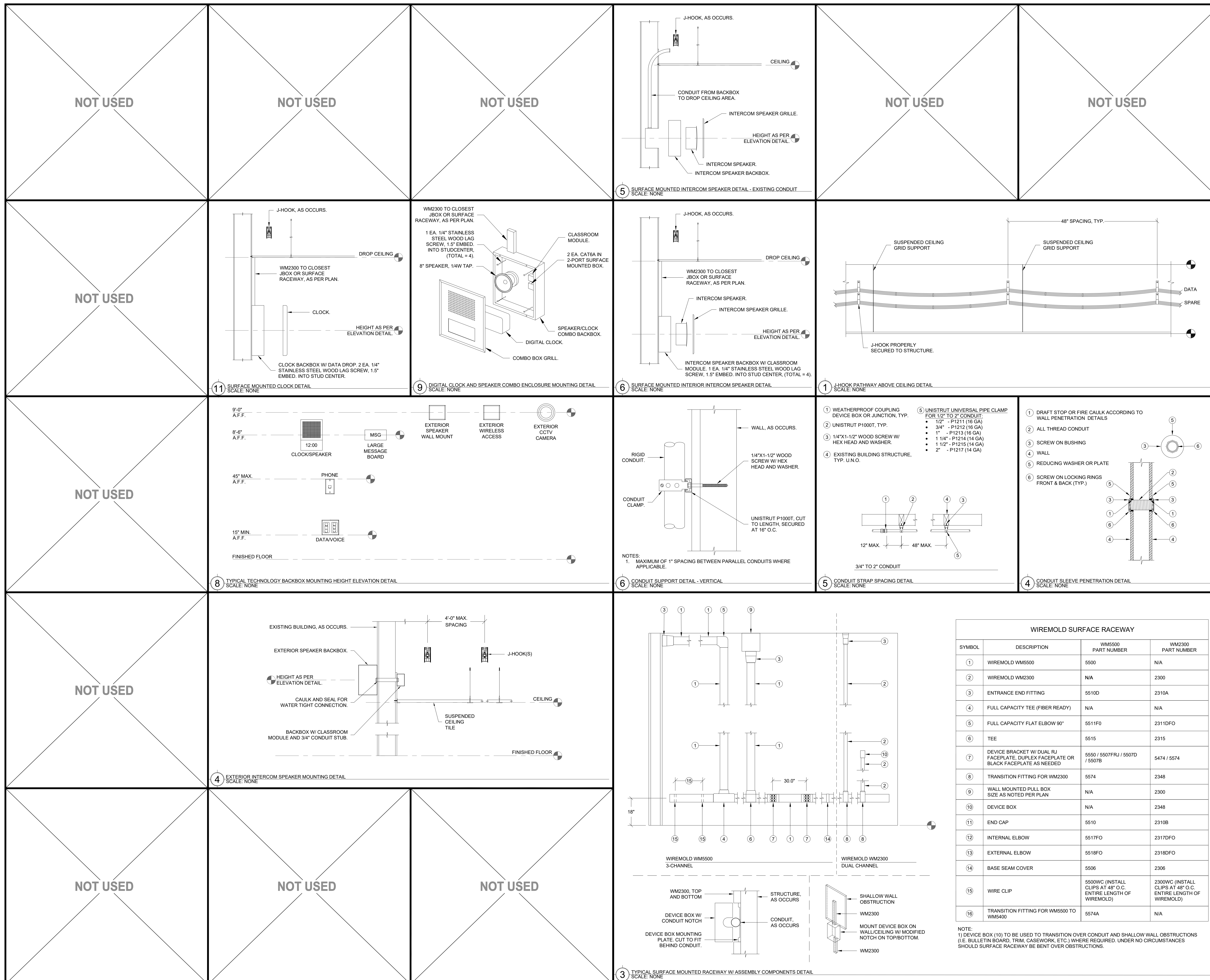
DRAWING STATUS

CONSTRUCTION DOCUMENTS

PROJECT NO:	0183-464
BID PACKAGE:	TBD
DESIGNED BY:	RK/CC
CHECKED BY:	JG
ISSUE DATE:	2023-05-09
WORKING DATE:	2023-04-28

REVISION

SHEET **T800**



WIREMOLD SURFACE RACEWAY			
SYMBOL	DESCRIPTION	WM5500 PART NUMBER	WM2300 PART NUMBER
1	WIREMOLD WM5500	5500	N/A
2	WIREMOLD WM2300	N/A	2300
3	ENTRANCE END FITTING	5510D	2310A
4	FULL CAPACITY TEE (FIBER READY)	N/A	N/A
5	FULL CAPACITY FLAT ELBOW 90°	5511F0	2311DFO
6	TEE	5515	2315
7	DEVICE BRACKET W/ DUAL RJ FACEPLATE, DUPLEX FACEPLATE OR BLACK FACEPLATE AS NEEDED	5550 / 5507RJ / 5507D / 5507B	5474 / 5574
8	TRANSITION FITTING FOR WM2300	5574	2348
9	WALL MOUNTED PULL BOX SIZE AS NOTED PER PLAN	N/A	2300
10	DEVICE BOX	N/A	2348
11	END CAP	5510	2310B
12	INTERNAL ELBOW	5517FO	2317DFO
13	EXTERNAL ELBOW	5518FO	2318DFO
14	BASE SEAM COVER	5506	2306
15	WIRE CLIP	5500WC (INSTALL CLIPS AT 48" O.C. ENTIRE LENGTH OF WIREMOLD)	2300WC (INSTALL CLIPS AT 48" O.C. ENTIRE LENGTH OF WIREMOLD)
16	TRANSITION FITTING FOR WM5500 TO WM5400	5574A	N/A

NOTE:
1) DEVICE BOX (10) TO BE USED TO TRANSITION OVER CONDUIT AND SHALLOW WALL OBSTRUCTIONS (I.E. BULLETIN BOARD, TRIM, CASEWORK, ETC.) WHERE REQUIRED. UNDER NO CIRCUMSTANCES SHOULD SURFACE RACEWAY BE BENT OVER OBSTRUCTIONS.

