

ABBREVIATIONS:

A	AMPERE
AFF	ABOVE FINISHED FLOOR
AFG	ABOVE FINISHED GRADE
ANN	ANNUNCIATOR
AP	ACCESS POINT
BFF	BELOW FINISHED FLOOR
BFG	BELOW FINISHED GRADE
BICSI	BUILDING INDUSTRY CONSTRUCTION SERVICE INTERNATIONAL
BLDG	BUILDING
C	CONDUIT
CAB	CABINET
CAT	CATEGORY
CATV	CABLE TELEVISION
CD	CANDELA
CFI	CONTRACTOR FURNISHED/CONTRACTOR INSTALLED
CL	CENTER LINE
CO	CARBON MONOXIDE
DN	DOWN
(E)	EXISTING
EMT	ELECTRICAL METALLIC TUBING
EOL	END OF LINE
FA	FIRE ALARM
FACP	FIRE ALARM CONTROL PANEL
FTC	FIRE TERMINAL CABINET
GRC	GALVANIZED RIGID CONDUIT
G OR GB	GROUND BOX
IACP	INTRUSION ALARM CONTROL PANEL
IDF	INTERMEDIATE DISTRIBUTION FRAME
IMC	INTERMEDIATE METAL CONDUIT
J OR JB	JUNCTION BOX
MEP	MECHANICAL / ELECTRICAL / PLUMBING
MDF	MAIN DISTRIBUTION FRAME
MPOE	MINIMUM POINT OF ENTRY
(N)	NEW
NFPA	NATIONAL FIRE PROTECTION ASSOCIATION
NTS	NOT TO SCALE
N/A	NOT APPLICABLE
OFE	OWNER FURNISHED EQUIPMENT
OFCI	OWNER FURNISHED/CONTRACTOR INSTALLED
OFOI	OWNER FURNISHED/OWNER INSTALLED
OSP	OUTSIDE PLANT
PVC	POLYVINYL CHLORIDE
RCDD	REGISTERED COMMUNICATION DISTRIBUTION DESIGNER
RCWY	RACEWAY
RM	ROOM
SR	SURFACE RACEWAY
TYP	TYPICAL
UG	UNDERGROUND
UL	UNDERWRITERS LABORATORIES
UNO	UNLESS NOTED OTHERWISE
V	VOLTS
W	WATT
WP	WEATHERPROOF

TECHNOLOGY SYMBOL LEGEND:

ALL EQUIPMENT AND MATERIALS ARE CONTRACTOR FURNISHED, INSTALLED AND CONFIGURED (UNO)

SYMBOL	DESCRIPTION	MANUFACTURER	PART NUMBER	NOTES / DETAIL REFERENCES
---	(N) SURFACE MOUNTED CONDUIT	GRC	GENERIC	GREY = EXISTING
----	(E) UNDERGROUND CONDUIT	N/A	N/A	N/A
---	(N) HIGH CAPACITY SURFACE MOUNTED CABLE RACEWAY	WIREMOLD	5500 SERIES	GREY = EXISTING
---	(N) MEDIUM CAPACITY SURFACE MOUNTED CABLE RACEWAY	WIREMOLD	2300 SERIES	GREY = EXISTING
---	(N) J-HOOK PATHWAY	COMMERCIAL GENERIC	N/A	GREY = EXISTING
MDF / IDF	(E) DATA RACK	DAMAC	SEE SHEET T400	GREY = EXISTING
G	(E) GROUND BOX	N/A	N/A	N/A
J	(E) JUNCTION BOX	N/A	N/A	N/A
+	(E) SURFACE MOUNTED 4-SQUARE JUNCTION BOX, WALL / CEILING	N/A	N/A	N/A
+	(E) INTERCOM SPEAKER/CLOCK COMBO	N/A	N/A	16" x 16" CLOCK
+	(E) INTERIOR INTERCOM SPEAKER	N/A	N/A	N/A
+	(E) EXTERIOR INTERCOM SPEAKER	N/A	N/A	N/A
+	(E) FLUSH MOUNTED CLOCK	N/A	N/A	N/A
+	(N) CAT6A DATA DROP LOCATION - IP CLOCK	LOWELL & SAPLING	SEE SHEET T400	16" x 16" CLOCK
+	(N) CAT6A DATA DROP LOCATION (QTY = 2) - IP CLOCK/SPEAKER/ IP MODULE COMBO BOX	LOWELL, SAPLING, RAULAND & TCJ	SEE SHEET T400	N/A
+	(N) CAT6A DATA DROP LOCATION - WALL MOUNTED SPEAKER/ IP MODULE	RAULAND & TELECENTER U	SEE SHEET T400	N/A
+	(N) CAT6A DATA DROP LOCATION - DROP CEILING INTERCOM SPKR/ IP MOD	RAULAND & TELECENTER U	SEE SHEET T400	N/A
+	(N) CAT6A DATA DROP LOCATION - EXTERIOR INTERCOM SPEAKER/ IP MODULE	LOWELL, RAULAND & TELECENTER U	SEE SHEET T400	N/A
4S	(N) SURFACE MOUNTED 4 GANG BACKBOX - WHITE	FSR	SEE SHEET T400	N/A
DIG	(N) SURFACE MOUNTED DIGITAL CLOCK	SAPLING	SBP-31S-254-0W	N/A
TEL	(N) ADMIN. CONSOLE PHONE	RAULAND	SEE SHEET T400	N/A

CONTRACTOR FURNISHED DOCUMENTS:

(SHOP DRAWINGS / PRODUCT SUBMITTALS / QUALIFICATIONS)

- ORDERING AND INSTALLATION OF THE SYSTEMS SHALL NOT BE STARTED UNTIL THE FOLLOWING:
 - CONTRACTOR FURNISHED SHOP DRAWINGS ARE RECEIVED AND APPROVED BY THE DESIGNER.
 - PRODUCT SUBMITTAL DOCUMENTS ARE RECEIVED AND APPROVED BY THE DESIGNER.
 - APPLICABLE QUALIFICATION DOCUMENTATION ARE RECEIVED AND APPROVED BY THE DESIGNER.
- ANY DESIGN AND/OR INSTALLATION DISCREPANCIES/CHANGE ORDER REQUESTS ARE TO BE ADDRESSED AT TIME OF SHOP DRAWING CREATION. CHANGE ORDERS AFTER APPROVED SHOP DRAWINGS ARE THE SOLE RESPONSIBILITY OF THE CONTRACTOR.
- ALTERNATIVE PRODUCTS ARE TO SUBMITTED WITH A FORMAL SUBSTITUTION REQUEST AND THE CONTRACTOR IS RESPONSIBLE FOR DEMONSTRATING PRODUCT FULL EQUIVALENCY.
- IT SHALL BE UNDERSTOOD THAT THE DRAWINGS, DETAILS, AND ONE-LINES PROVIDED WITH THE DESIGN PACKAGE ARE DIAGRAMMATIC. INFORMATION PRESENTED IN DESIGN DRAWINGS ARE AS ACCURATE AS POSSIBLE, BUT ACCURACY IS NOT GUARANTEED AND FIELD VERIFICATION OF ALL DIMENSIONS, ROUTING, ETC., BY THE CONTRACTOR IS REQUIRED.
- DRAWINGS AND SPECIFICATIONS ARE PROVIDED TO SHOW THE INTENT OF THE DESIGN TO ASSIST THE CONTRACTOR IN SUBMITTING AN ACCURATE BID. CONTRACTOR IS DIRECTED TO MAKE FIELD SURVEYS AS PART OF THEIR WORK PRIOR TO SUBMITTING SYSTEM LAYOUT DRAWINGS (SHOP DRAWINGS). THE CONTRACTOR SHALL MAKE ALLOWANCE IN THE PROPOSAL TO COMPLY WITH THE INTENT OF THE DESIGN.
- IN CASE OF DOUBT OF WORK INTENDED, IT IS THE RESPONSIBILITY OF THE CONTRACTOR TO REQUEST INSTRUCTIONS FROM THE DESIGNER OR OWNER PRIOR TO BID.
- THE CONTRACTOR SHALL BE RESPONSIBLE FOR INSTALLING A COMPLETE, OPERABLE, AND FULLY FUNCTIONING SYSTEM.

TECHNOLOGY GENERAL PROJECT NOTES:

- UPON COMPLETION OF THE INSTALLATION OF THE SYSTEMS, THE CONTRACTOR SHALL PROVIDE A SATISFACTORY TEST OF THE ENTIRE SYSTEMS IN THE PRESENCE OF THE ARCHITECT/DESIGNER, INSPECTOR, AND THE OWNER.
- A STAMPED SET OF APPROVED SYSTEM DESIGN DOCUMENTS, AND CONTRACTOR FURNISHED SHOP DRAWINGS SHALL BE ON THE JOB SITE AND USED FOR INSTALLATION. THE CONTRACTOR SHALL INCORPORATE ANY AND ALL REVISIONS TO DRAWINGS SETS AS REQUIRED. ANY DEVIATION FROM APPROVED DESIGN DOCUMENTS, INCLUDING THE SUBSTITUTION OF DEVICES, SHALL BE APPROVED BY THE ARCHITECT/DESIGNER AND THE OWNER PRIOR TO INSTALLATION.
- ANY DISCREPANCIES BETWEEN THE DRAWINGS AND THE CODE OR RECOGNIZED STANDARDS SHALL BE BROUGHT TO THE ATTENTION OF THE ARCHITECT/DESIGNER PRIOR TO INSTALLATION.
- ALL PENETRATIONS THROUGH RATED ASSEMBLIES REQUIRING OPENING PROTECTION SHALL BE PROVIDED WITH THROUGH PENETRATION FIRST STOP SYSTEMS WITH A "T" RATING EQUAL TO THE ASSEMBLY PENETRATED. SEE DETAILS ON SHEET T801 FOR MORE INFORMATION.
- PER CEC STANDARDS, ALL WIRING IS TO BE PULLED THROUGH EACH JUNCTION BOX AND CONNECTED DIRECTLY TO EACH DEVICE. DO NOT SPLICE THE WIRE. THERE MUST BE AT LEAST 6" OF LEAD WIRE FROM THE BOX TO THE DEVICE.
- ALL CLOCK, BELL AND INTERCOM CIRCUITS SHALL BE IN CONDUIT, SURFACE RACEWAY, OR OPEN RUN ABOVE CEILINGS, UNDER FLOORS AND IN WALLS IN A NEAT AND PROTECTED MANNER AS INDICATED ON DESIGN DOCUMENTS. EXPOSED CABLES ARE ONLY PERMITTED IF INDICATED ON DESIGN DOCUMENTS AS "EXPOSED".
- LOW VOLTAGE PANELS, REMOTES, AND COMPONENTS SHALL BE SECURED TO MOUNTING SURFACES PER MANUFACTURER'S SPECIFICATIONS. NO SINGLE DEVICE SHALL EXCEED THE WEIGHT FOR 20 lbs., WITHOUT SPECIAL MOUNTING DETAILS.
- THE CONTRACTOR SHALL NOTIFY THE ARCHITECT/DESIGNER AT A MINIMUM OF FIVE (5) WORKING DAYS PRIOR TO FINAL INSPECTION FOR FINAL PUNCH ALL ITEMS ON PUNCH LIST MUST BE COMPLETE FOR JOB TO FINAL.
- PRIOR TO FINAL INSPECTION, THE CONTRACTOR SHALL PROVIDE ALL PROJECT AS-BUILT DRAWINGS AND MANUALS PER SPECIFICATIONS.
- THE CONTRACTOR SHALL ALSO PROVIDE A TYPED RECORD OF COMPLETION. A FINAL WILL NOT BE GRANTED UNTIL THE ABOVE IS APPROVED BY THE OWNER.
- THE TERM "PROVIDE" SHALL MEAN TO FURNISH, INSTALL AND MAKE FULLY OPERATIONAL.

SCOPE OF WORK:

- THE CONTRACTOR SHALL PROVIDE ALL CLOCK, BELL AND INTERCOM EQUIPMENT, LICENSES, SOFTWARE AND ACCESSORIES FOR COMPLETE AND FULLY OPERATIONAL SYSTEMS.
- THE CONTRACTOR SHALL PROVIDE ALL DATA NETWORK EQUIPMENT, LICENSES, SOFTWARE AND ACCESSORIES FOR COMPLETE AND FULLY OPERATIONAL DATA NETWORK SYSTEM.
- THE CONTRACTOR SHALL REMOVE OLD OR ABANDONED CLOCK, BELL AND INTERCOM COMPONENTS (INCLUDING WIRE AND PATHWAY) AND PLATE OVER ANY OPENINGS.
- THE CONTRACTOR SHALL TOUCH UP PAINT TO MATCH EXISTING CONDITIONS FOR NEW LOCATIONS FOR INSTALL OR AREAS OF DEMOLITION.

PROJECT CODES AND STANDARDS:

PARTIAL LIST OF APPLICABLE CODES AND STANDARDS EFFECTIVE : JANUARY 1, 2023:

- 2022 CALIFORNIA ADMINISTRATIVE CODE (CAC), CCR, TITLE 24, PART 1
- 2022 CALIFORNIA BUILDING CODE (CBC), CCR, TITLE 24, PART 2 (2018 INTERNATIONAL BUILDING CODE WITH CALIFORNIA AMENDMENTS)
- 2022 CALIFORNIA ELECTRICAL CODE (CEC), CCR, TITLE 24, PART 3 (2017 NATIONAL ELECTRICAL CODE WITH CALIFORNIA AMENDMENTS)
- 2022 CALIFORNIA MECHANICAL CODE (CMC), CCR, TITLE 24, PART 4 (2018 UNIFORM MECHANICAL CODE, WITH CALIFORNIA AMENDMENTS)
- 2022 CALIFORNIA ENERGY CODE, CCR, TITLE 24, PART 6
- 2022 CALIFORNIA FIRE CODE (CFC), CCR, TITLE 24, PART 9 (2018 INTERNATIONAL FIRE CODE WITH CALIFORNIA AMENDMENTS)
- 2022 CALIFORNIA GREEN BUILDING STANDARDS CODE, CCR, TITLE 24, PART 11
- 2022 CALIFORNIA REFERENCED STANDARDS CODE, CCR, TITLE 24, PART 12
- 2022 NFPA 72: NATIONAL FIRE ALARM AND SIGNALING CODE, NATIONAL FIRE PROTECTION ASSOCIATION

ANCHORAGE AND BRACING NOTES:

APPLICABLE CODE: 2019 CBC REVISED: 02/14/2020

MEP COMPONENT ANCHORAGE NOTE:

- ALL MECHANICAL, PLUMBING, AND ELECTRICAL COMPONENTS SHALL BE ANCHORED AND INSTALLED PER THE DETAILS ON THE DSA APPROVED CONSTRUCTION DOCUMENTS. THE FOLLOWING COMPONENTS SHALL BE ANCHORED OR BRACED TO MEET THE FORCE AND DISPLACEMENT REQUIREMENTS PRESCRIBED IN THE 2019 CBC SECTIONS 1617A.1.18 THROUGH 1617A.1.26 AND ASCE 7-16 CHAPTERS 13, 26 THRU 30:
- ALL PERMANENT EQUIPMENT AND COMPONENTS.
 - TEMPORARY, MOVEABLE OR MOBILE EQUIPMENT THAT IS PERMANENTLY ATTACHED (E.G. HARD WIRED) TO THE BUILDING UTILITY SERVICES SUCH AS ELECTRICITY, GAS OR WATER. "PERMANENTLY ATTACHED" SHALL INCLUDE ALL ELECTRICAL CONNECTIONS EXCEPT PLUGS FOR 110/220 VOLT RECEPTACLES HAVING A FLEXIBLE CABLE.
 - TEMPORARY, MOVEABLE OR MOBILE EQUIPMENT WHICH IS HEAVIER THAN 400 POUNDS OR HAS A CENTER OF MASS LOCATED 4 FEET OR MORE ABOVE THE ADJACENT FLOOR OR ROOF LEVEL THAT DIRECTLY SUPPORT THE COMPONENT IS REQUIRED TO BE RESTRAINED IN A MANNER APPROVED BY DSA.

THE FOLLOWING MECHANICAL AND ELECTRICAL COMPONENTS SHALL BE POSITIVELY ATTACHED TO THE STRUCTURE BUT NEED NOT DEMONSTRATE DESIGN COMPLIANCE WITH THE REFERENCES NOTED ABOVE. THESE COMPONENTS SHALL HAVE FLEXIBLE CONNECTIONS PROVIDED BETWEEN THE COMPONENT AND ASSOCIATED DUCTWORK, PIPING, AND CONDUIT. FLEXIBLE CONNECTIONS MUST ALLOW MOVEMENT IN BOTH TRANSVERSE AND LONGITUDINAL DIRECTIONS:

- COMPONENTS WEIGHING LESS THAN 400 POUNDS AND HAVING A CENTER OF MASS LOCATED 4 FEET OR LESS ABOVE THE ADJACENT FLOOR OR ROOF LEVEL THAT DIRECTLY SUPPORT THE COMPONENTS.
- COMPONENTS WEIGHING LESS THAN 20 POUNDS, OR IN THE CASE OF DISTRIBUTION SYSTEMS, LESS THAN 5 POUNDS PER FOOT, WHICH ARE SUSPENDED FROM A ROOF OR FLOOR OR HUNG FROM A WALL.

THE ANCHORAGE OF ALL MECHANICAL, ELECTRICAL AND PLUMBING COMPONENTS SHALL BE SUBJECT TO THE APPROVAL OF THE DESIGN PROFESSIONAL IN GENERAL, RESPONSIBLE CHARGE OR STRUCTURAL ENGINEER DELEGATED RESPONSIBILITY AND ACCEPTANCE BY DSA. THE PROJECT INSPECTOR WILL VERIFY THAT ALL COMPONENTS AND EQUIPMENT HAVE BEEN ANCHORED IN ACCORDANCE WITH THE ABOVE REQUIREMENTS.

PIPING, DUCTWORK, AND ELECTRICAL DISTRIBUTION SYSTEM BRACING NOTE:

PIPING, DUCTWORK AND ELECTRICAL SYSTEMS SHALL BE BRACED TO COMPLY WITH THE FORCES AND DISPLACEMENTS PRESCRIBED IN ASCE 7-16 SECTIONS 13.3 AS FORCED IN ASCE 7-16 SECTIONS 13.6.5, 13.6.6, 13.6.7, 13.6.8 AND 2019 CBC SECTIONS 1617A.1.24, 1617A.1.25 AND 1617A.1.26

THE METHOD OF SHOWING BRACING AND ATTACHMENTS TO THE STRUCTURE FOR THE IDENTIFIED DISTRIBUTIONS SYSTEM ARE A NOTED BELOW. WHEN BRACING AND ATTACHMENTS ARE BASED ON A PRE-APPROVED INSTALLATION GUIDE (E.G. OSHPD OPM FOR 2013 CBC OR LATER), COPIES OF THE BRACING SYSTEM INSTALLATION GUIDE OR MANUAL SHALL BE AVAILABLE ON THE JOBSITE PRIOR TO THE START OF AND DURING THE HANGING AND BRACING OF THE DISTRIBUTION SYSTEMS. THE STRUCTURAL ENGINEER OF RECORD SHALL VERIFY THE ADEQUACY OF THE STRUCTURE TO SUPPORT THE HANGER AND BRACE LOADS.

MECHANICAL PIPING (MP), MECHANICAL DUCTS (MD), PLUMBING PIPES (PP), ELECTRICAL DISTRIBUTION SYSTEMS (E):

- MP | MD | PP | E | X OPTION 1: DETAILED ON THE APPROVED DRAWINGS WITH PROJECT SPECIFIC NOTES AND DETAILS.
 MP | MD | PP | E | OPTION 2: SHALL COMPLY WITH THE APPLICABLE OSHPD PRE-APPROVED (OPM #)

SHEET INDEX:

SHEET	DESCRIPTION
T000	TECHNOLOGY COVER SHEET
T100	TECHNOLOGY SITE PLAN
T101	TECHNOLOGY SITE PLAN - EXTERIOR INTERCOM SPEAKERS
T200	TECHNOLOGY FLOOR PLANS - MDF
T201	TECHNOLOGY FLOOR PLANS - IDF 1.01
T202	TECHNOLOGY FLOOR PLANS - IDF 1.02
T203	TECHNOLOGY FLOOR PLANS - IDF 1.03
T400	TECHNOLOGY DATA RACK ELEVATIONS AND INTERCOM AND CLOCK SINGLE LINES
T800	TECHNOLOGY DETAILS
T801	TECHNOLOGY DETAILS



KMM SERVICES, INC
TECHNOLOGY & FIRE LIFE SAFETY

5433 El Camino Ave. Suite 5
Carlsbad, CA 92008
Office: (916) 359-4000 www.kmm.com



Copyright © 2023

These drawings and specifications and the ideas, designs and arrangements represented thereby are and shall remain the property of KMM Services, Inc. and no part thereof shall be copied, disclosed to others, or used in connection with any other work or project other than the specific project for which they have been prepared and developed without the written consent of KMM Services, Inc. Visual contact with these drawings or specifications shall constitute conclusive evidence of these restrictions.

IF DRAWING IS NOT 30"x42" IT IS A REDUCED PRINT

SHEET REVISIONS

DELTA	DESCRIPTION	DATE

SITE KEY PLAN

PROJECT
SACRAMENTO CITY USD
CROCKER RIVERSIDE
TELE-CENTER
UPGRADE PROJECT
2970 RIVERSIDE BLVD.
SACRAMENTO, CA. 95818

SHEET TITLE

TECHNOLOGY
COVER SHEET

DRAWING STATUS
CONSTRUCTION DOCUMENTS

PROJECT NO:	0300-464
BID PACKAGE:	TBD
DESIGNED BY:	RKCC
CHECKED BY:	JG
ISSUE DATE:	2023-05-09
WORKING DATE:	2023-05-09

REVISION

SHEET **T000**

Logix Name: good
 Plot Date: May 08, 2023 - 2:11 pm
 Plot Date: May 08, 2023 - 2:11 pm
 User: KMM Services, Inc. - KMM Services, Inc. - KMM Services, Inc.



CONDUIT QUANTITY AND SIZE:	
①	(E) 1 EA. 1" CONDUITS.
②	(E) 1 EA. 2" CONDUITS.
③	(E) 2 EA. 2" CONDUITS.
④	(E) 3 EA. 2" CONDUITS.
⑤	(E) 4 EA. 2" CONDUITS.
⑥	(E) 5 EA. 2" CONDUITS.

GENERAL NOTE(S):	
1.	NO STRUCTURAL BEAMS SHALL BE PENETRATED OR ALTERED.
2.	PROVIDE APPROPRIATE WM5500 TO WM2300 FITTINGS TO EXIT WM5500 TO TRANSITION DOWN TO DROP LOCATIONS.
3.	RELOCATE EXISTING INTRUSION DEVICES UP OR DOWN TO ALLOW NEW RACEWAY TO BE INSTALLED. VERIFY THAT THE RELOCATED DEVICE IS NOT CAUSING A FAULT ON THE ALARM PANEL PRIOR TO LEAVING THE SITE.

SHEET NOTE(S):	
①	(E) INTERCOM HEADEND.
②	(E) INTRUSION KEY PAD.
③	(E) FIRE ALARM CONTROL PANEL.



KMM SERVICES, INC.
 TECHNOLOGY & FIRE LIFE SAFETY
 5433 El Camino Ave. Suite 5
 Carmichael, CA 95608
 Office: (916) 359-4000 www.kmm.com



Copyright © 2023
 These drawings and specifications and the ideas, designs and arrangements represented thereby are and shall remain the property of KMM Services, Inc. and no part thereof shall be copied, disclosed, or used in connection with any other work or project other than the specific project for which they have been prepared and developed without the written consent of KMM Services, Inc. Visual contact with these drawings or specifications shall constitute conclusive evidence of these restrictions.

IF DRAWING IS NOT 30"x42" IT IS A REDUCED PRINT

SHEET REVISIONS		
DELTA	DESCRIPTION	DATE

SITE KEY PLAN

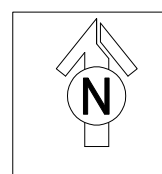
PROJECT
SACRAMENTO CITY USD CROCKER RIVERSIDE
TELE-CENTER
UPGRADE PROJECT
 2970 RIVERSIDE BLVD.
 SACRAMENTO, CA. 95818

SHEET TITLE
TECHNOLOGY
SITE PLAN

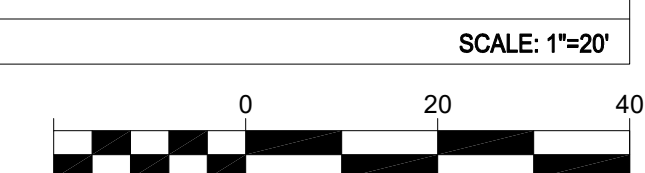
DRAWING STATUS
CONSTRUCTION DOCUMENTS

PROJECT NO:	0300-464
BID PACKAGE:	TBD
DESIGNED BY:	RK/CC
CHECKED BY:	JG
ISSUE DATE:	2023-05-09
WORKING DATE:	2023-04-17

SHEET
T100



TECHNOLOGY SITE PLAN



GENERAL NOTES:

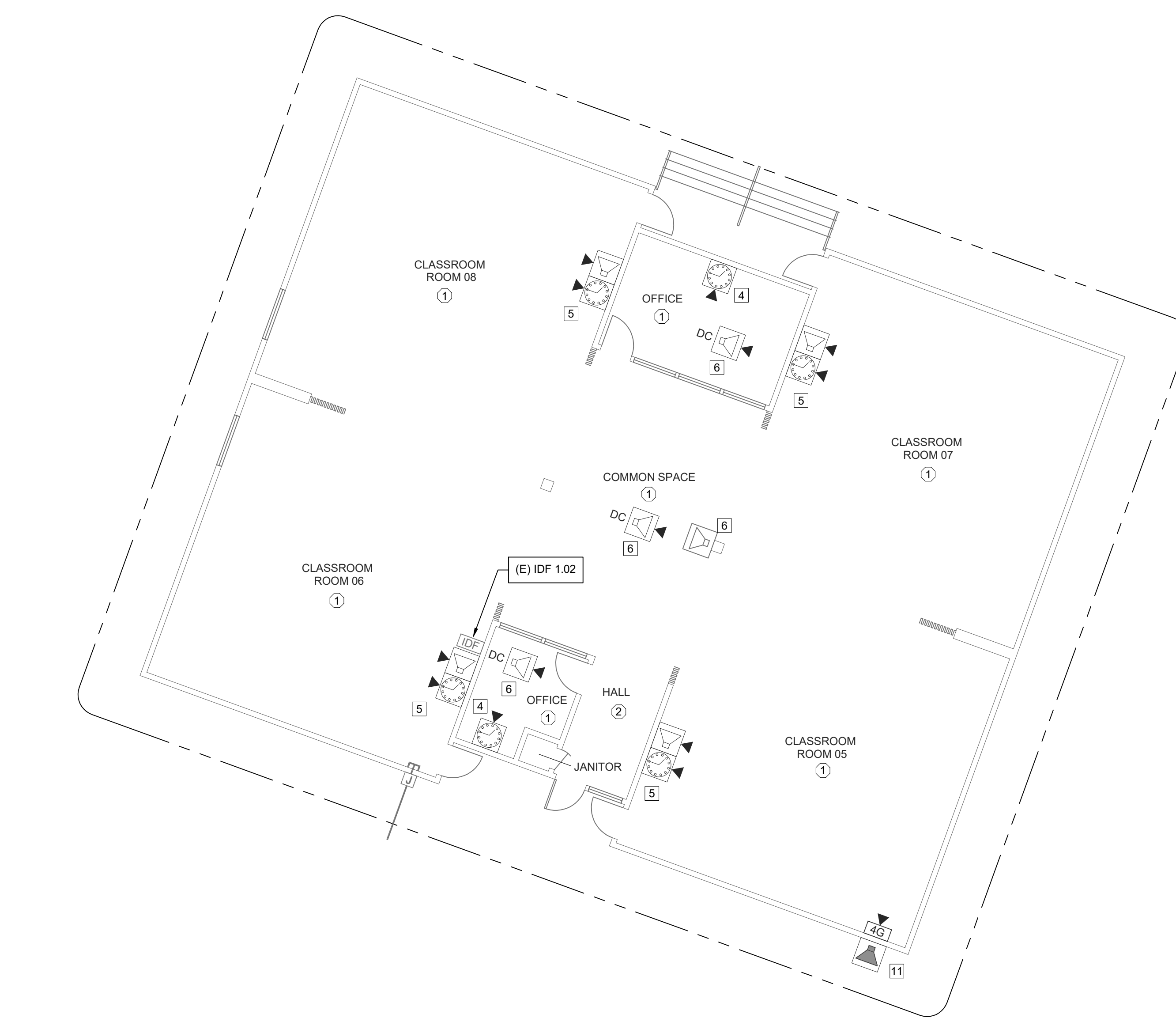
1. NO STRUCTURAL BEAMS SHALL BE PENETRATED OR ALTERED.
2. EACH (N) DATA DROP INSTALLED WILL REQUIRE (N) WM2300 INSTALLED TO BACKBOX LOCATION.
3. REMOVE ALL NON-USED CLOCKS, SPEAKERS, BELLS AND WIRING. INSTALL BLANK COVER OVER OPENING.

SHEET NOTES:

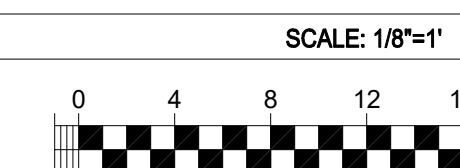
- 1 (E) ABANDONED CLOCK / INTERCOM UNIT. CONTRACTOR TO REMOVE AND INSTALL A (N) TACK BOARD ON HINGES TO COVER THE BACK BOXES AND RELOCATE INTRUSION KEY PAD.
- 2 (E) TELECENTER ICS TO BE REMOVED AFTER CUTOVER TO (N) SYSTEM. REMOVE ALL (E) CABLES, BR-BLOCKS AND CABINET.
- 3 (N) DIGITAL OFFICE CLOCK. MOUNT UNDER (E) CCTV MONITOR. PROVIDE ONE (1) (N) CAT6A DATA DROP.
- 4 REMOVE (E) CLOCK AND PROVIDE (N) BACKBOX AND (N) IP CLOCK. PROVIDE ONE (1) (N) CAT6A DATA DROP.
- 5 REMOVE (E) SPEAKER AND (E) CLOCK. INSTALL BLANK COVER OVER CLOCK OPENING (WHERE APPLICABLE). INSTALL (N) COMBO BOX AND ASSOCIATED HARDWARE, MOUNTED OVER (E) SPEAKER LOCATION. WITH TWO (2) (N) CAT6A DATA DROPS.
- 6 REMOVE (E) SPEAKER (BLANK OPENING) AND REPLACE WITH (N) IN-CEILING SPEAKER WITH (N) CLASSROOM IP MODULE. CENTER THE CEILING SPEAKER WITHIN THE SPACE. PROVIDE ONE (1) (N) CAT6A DATA DROP.
- 7 REPLACE (E) SPEAKER WITH (N) BACKBOX AND (N) SPEAKER WITH (N) CLASSROOM IP MODULE. PROVIDE ONE (1) (N) CAT6A DATA DROP.
- 8 PROVIDE (N) WALL MOUNTED BACK BOX AND (N) SPEAKER WITH (N) IP CLASSROOM MODULE. PROVIDE ONE (1) (N) CAT6A DATA DROP.
- 9 REPLACE (E) SPEAKER AND (E) CLOCK WITH (N) SPEAKER WITH (N) CLASSROOM IP MODULE AND (N) IP CLOCK MOUNTED IN (E) CLOCK / SPEAKER COMBO BOX. PROVIDE TWO (2) (N) CAT6A DATA DROPS.
- 10 REPLACE (E) EXTERIOR SPEAKER WITH (N) BACKBOX AND (N) SPEAKER. PROVIDE (N) INTERIOR ENCLOSURE WITH (N) CLASSROOM IP MODULE. PROVIDE ONE(1) (N) CAT6A DATA DROP.
- 11 PROVIDE (N) EXTERIOR SPEAKER WITH (N) BACKBOX. PROVIDE (N) INTERIOR ENCLOSURE WITH (N) CLASSROOM IP MODULE. PROVIDE ONE(1) (N) CAT6A DATA DROP.
- 12 REMOVE (E) EXTERIOR SPEAKER. INSTALL BLANK COVER OVER OPENING.
- 13 REMOVE (E) CLOCK. INSTALL BLANK COVER OVER OPENING.
- 14 INSTALL ONE (1) (N) 1" CONDUIT PARALLEL TO (E) CONDUIT.
- 15 PROVIDE (N) WALL MOUNTED BACK BOX AND (N) IP CLOCK. PROVIDE ONE (1) (N) CAT6A DATA DROP.

CEILING CONDITION CHART:

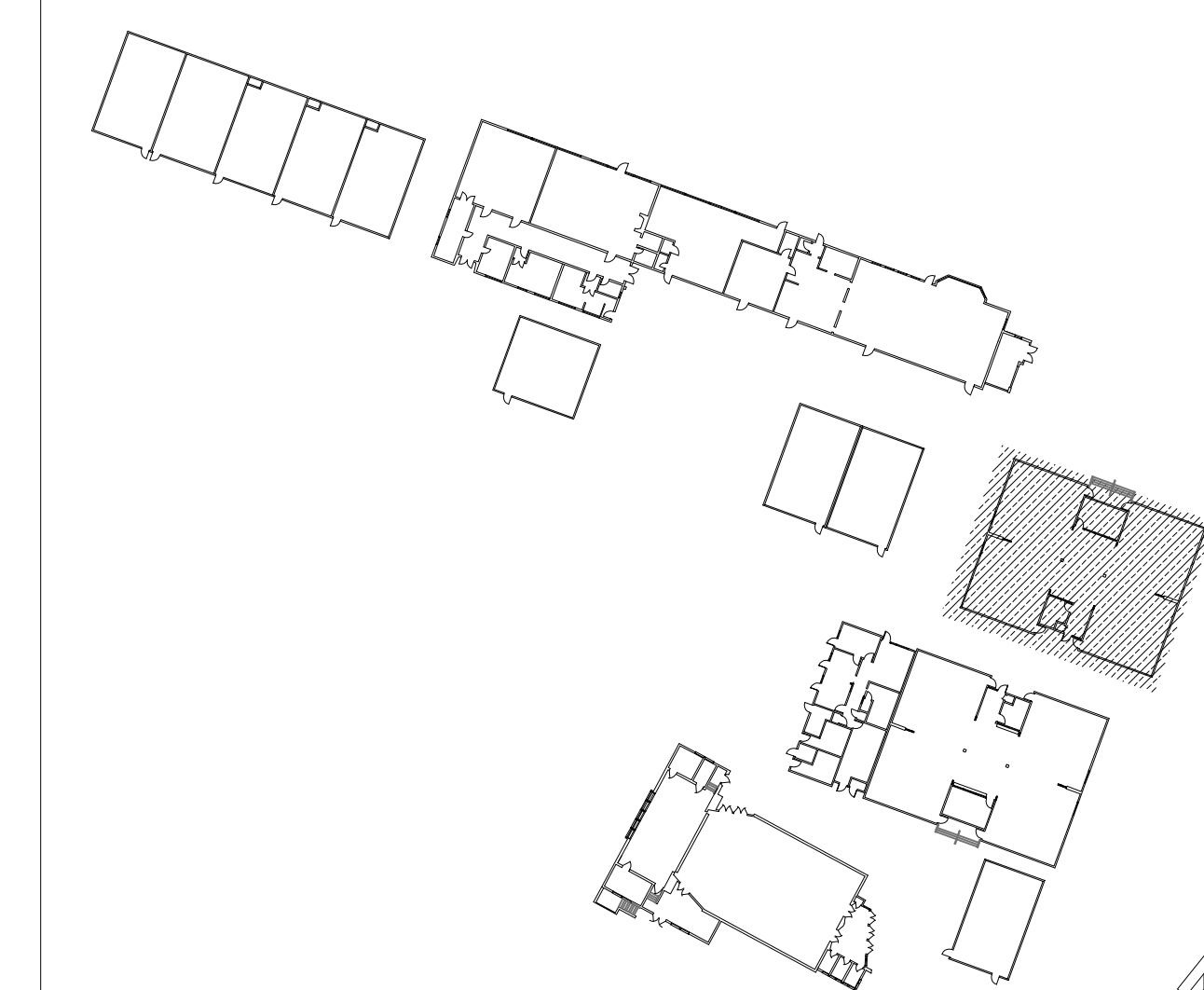
- 1 DROP IN CEILING TILES.
- 2 HARD LID CEILING.



TECHNOLOGY FLOOR PLAN - IDF 1.02



KEY PLAN



KMM SERVICES, INC
TECHNOLOGY & FIRE LIFE SAFETY

5433 El Camino Ave. Suite 5
Carmichael, CA 95608
Office: (916) 359-4000 www.kmm-services.com



RONNY KASTROM
Designer
EX-125124
Regis. No. 163629

Copyright © 2023
These drawings and specifications and the ideas, designs and arrangements represented thereby are and shall remain the property of KMM Services, Inc. and no part thereof shall be copied, disclosed, or used in connection with any other work or project other than the specific project for which they have been prepared and developed without the written consent of KMM Services, Inc. Visual contact with these drawings or specifications shall constitute conclusive evidence of these restrictions.

IF DRAWING IS NOT 30"X42" IT IS A REDUCED PRINT

SHEET REVISIONS		
DELTA	DESCRIPTION	DATE

SITE KEY PLAN	

PROJECT
**SACRAMENTO CITY USD
CROCKER RIVERSIDE
TELE-CENTER
UPGRADE PROJECT**
2970 RIVERSIDE BLVD.
SACRAMENTO, CA. 95818

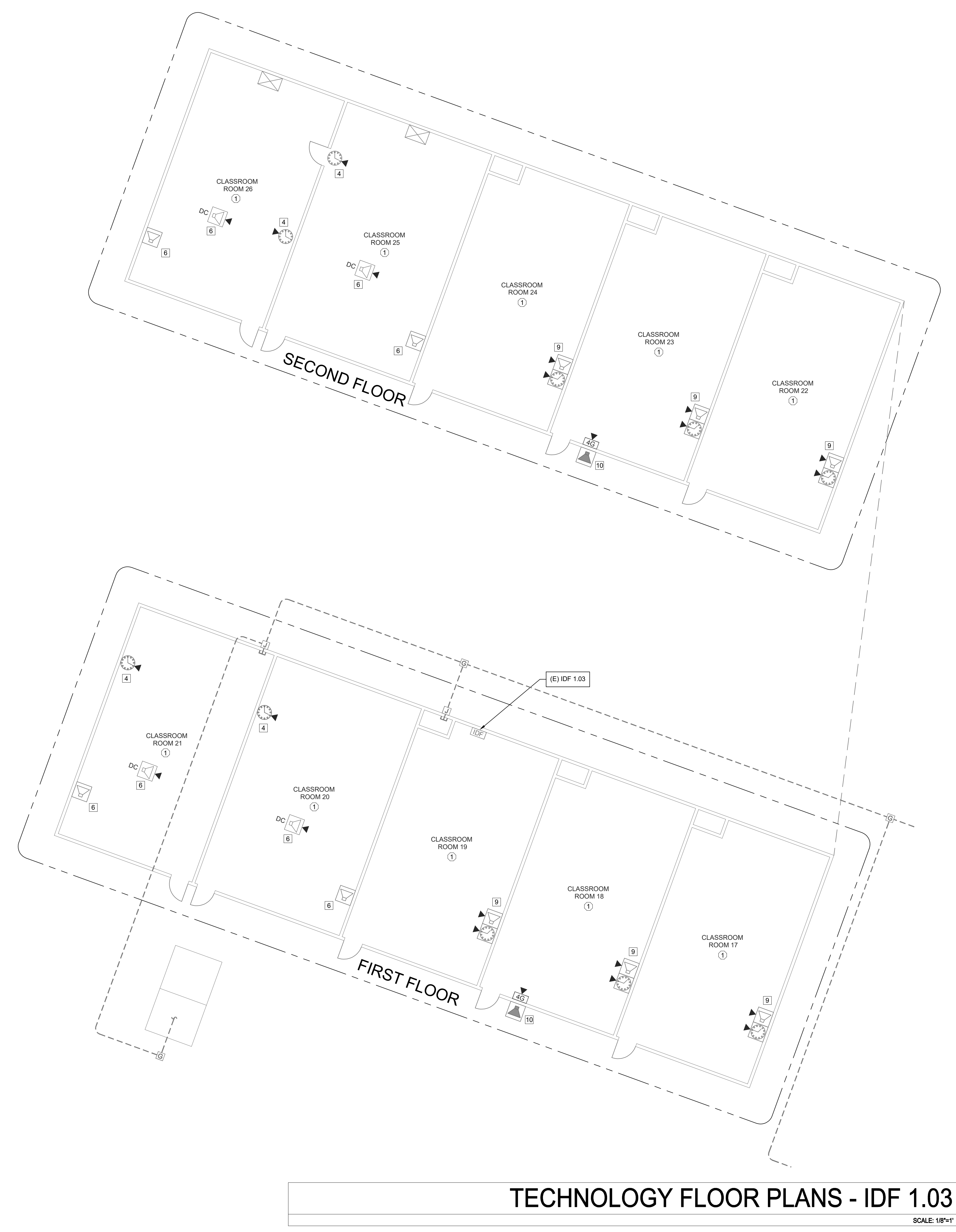
SHEET TITLE
**TECHNOLOGY
FLOOR PLAN
- IDF 1.02**

DRAWING STATUS
CONSTRUCTION DOCUMENTS

PROJECT NO:	0300-464
BID PACKAGE:	TBD
DESIGNED BY:	RK/CC
CHECKED BY:	JG
ISSUE DATE:	2023-05-09
WORKING DATE:	2023-04-17

REVISION
SHEET T202

LogIn Name: goodm
 Plot Date: May 08, 2023 - 2:11 pm
 User: KMM\kcastrom
 Project: SACRAMENTO CITY USD CROCKER RIVERSIDE TELE-CENTER UPGRADE PROJECT
 Sheet: T203 - Technology Floor Plans - IDF 1.03



TECHNOLOGY FLOOR PLANS - IDF 1.03
 SCALE: 1/8"=1'

- GENERAL NOTES:**
- NO STRUCTURAL BEAMS SHALL BE PENETRATED OR ALTERED.
 - EACH (N) DATA DROP INSTALLED WILL REQUIRE (N) WM2300 INSTALLED TO BACKBOX LOCATION.
 - REMOVE ALL NON-USED CLOCKS, SPEAKERS, BELLS AND WIRING. INSTALL BLANK COVER OVER OPENING.

- SHEET NOTES:**
- (E) ABANDONED CLOCK / INTERCOM UNIT. CONTRACTOR TO REMOVE AND INSTALL A (N) TACK BOARD ON HINGES TO COVER THE BACK BOXES AND RELOCATE INTRUSION KEY PAD.
 - (E) TELECENTER IC'S TO BE REMOVED AFTER CUTOVER TO (N) SYSTEM. REMOVE ALL (E) CABLES, 66-BLOCKS AND CABINET.
 - (N) DIGITAL OFFICE CLOCK. MOUNT UNDER (E) CCTV MONITOR. PROVIDE ONE (1) (N) CAT6A DATA DROP.
 - REMOVE (E) CLOCK AND PROVIDE (N) BACKBOX AND (N) IP CLOCK. PROVIDE ONE (1) (N) CAT6A DATA DROP.
 - REMOVE (E) SPEAKER AND (E) CLOCK. INSTALL BLANK COVER OVER CLOCK OPENING (WHERE APPLICABLE). INSTALL (N) COMBO BOX AND ASSOCIATED HARDWARE, MOUNTED OVER (E) SPEAKER LOCATION. WITH TWO (2) (N) CAT6A DATA DROPS.
 - REMOVE (E) SPEAKER (BLANK OPENING) AND REPLACE WITH (N) IN-CEILING SPEAKER WITH (N) CLASSROOM IP MODULE. CENTER THE CEILING SPEAKER WITHIN THE SPACE. PROVIDE ONE (1) (N) CAT6A DATA DROP.
 - REPLACE (E) SPEAKER WITH (N) BACKBOX AND (N) SPEAKER WITH (N) CLASSROOM IP MODULE. PROVIDE ONE (1) (N) CAT6A DATA DROP.
 - PROVIDE (N) WALL MOUNTED BACK BOX AND (N) SPEAKER WITH (N) IP CLASSROOM MODULE. PROVIDE ONE (1) (N) CAT6A DATA DROP.
 - REPLACE (E) SPEAKER AND (E) CLOCK WITH (N) SPEAKER WITH (N) CLASSROOM IP MODULE AND (N) IP CLOCK MOUNTED IN (E) CLOCK / SPEAKER COMBO BOX. PROVIDE TWO (2) (N) CAT6A DATA DROPS.
 - REPLACE (E) EXTERIOR SPEAKER WITH (N) BACKBOX AND (N) SPEAKER. PROVIDE (N) INTERIOR ENCLOSURE WITH (N) CLASSROOM IP MODULE. PROVIDE ONE (1) (N) CAT6A DATA DROP.
 - PROVIDE (N) EXTERIOR SPEAKER WITH (N) BACKBOX. PROVIDE (N) INTERIOR ENCLOSURE WITH (N) CLASSROOM IP MODULE. PROVIDE ONE (1) (N) CAT6A DATA DROP.
 - REMOVE (E) EXTERIOR SPEAKER. INSTALL BLANK COVER OVER OPENING.
 - REMOVE (E) CLOCK. INSTALL BLANK COVER OVER OPENING.
 - INSTALL ONE (1) (N) 1" CONDUIT PARALLEL TO (E) CONDUIT.
 - PROVIDE (N) WALL MOUNTED BACK BOX AND (N) IP CLOCK. PROVIDE ONE (1) (N) CAT6A DATA DROP.

- CEILING CONDITION CHART:**
- ① DROP IN CEILING TILES.
 - ② HARD LID CEILING.



KMM SERVICES, INC
 TECHNOLOGY & FIRE LIFE SAFETY
 5433 El Camino Ave. Suite 5
 Carmichael, CA 95608
 Office: (916) 359-4000 www.kmm.com



Copyright © 2023
 These drawings and specifications and the ideas, designs and arrangements represented thereby are and shall remain the property of KMM Services, Inc. and no part thereof shall be copied, disclosed, or used in connection with any other work or project other than the specific project for which they have been prepared and developed without the written consent of KMM Services, Inc. Visual contact with these drawings or specifications shall constitute conclusive evidence of these restrictions.

IF DRAWING IS NOT 30"x42" IT IS A REDUCED PRINT

SHEET REVISIONS

DELTA	DESCRIPTION	DATE

SITE KEY PLAN

PROJECT
**SACRAMENTO CITY USD
 CROCKER RIVERSIDE
 TELE-CENTER
 UPGRADE PROJECT**
 2970 RIVERSIDE BLVD.
 SACRAMENTO, CA. 95818

SHEET TITLE
**TECHNOLOGY
 FLOOR PLAN
 - IDF 1.03**

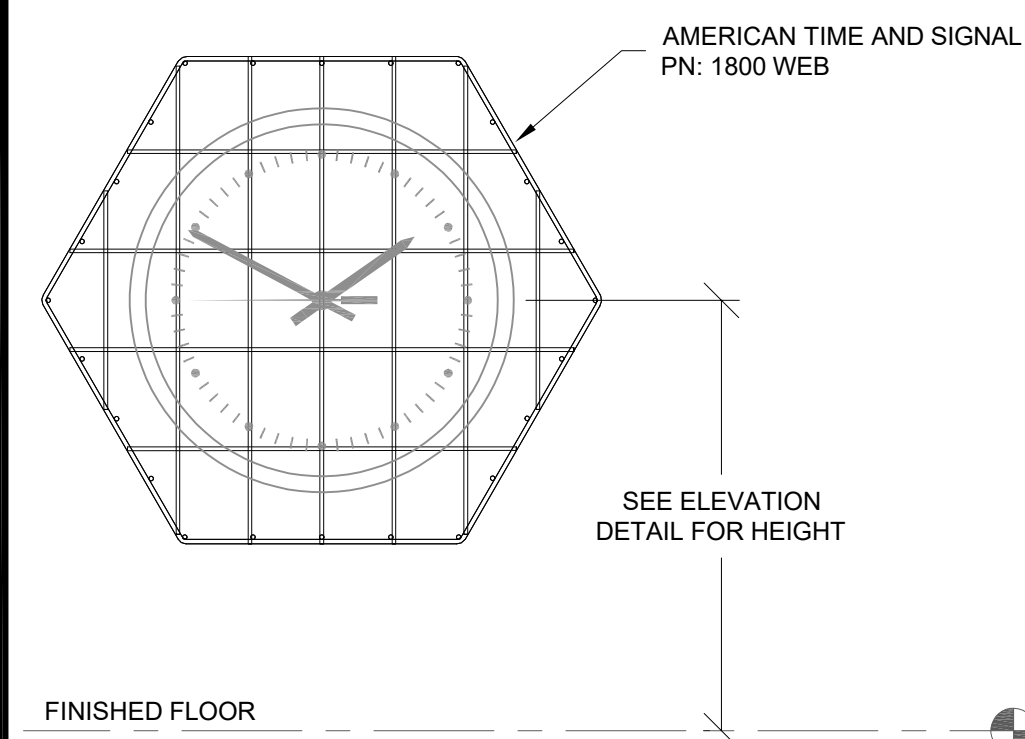
DRAWING STATUS
CONSTRUCTION DOCUMENTS

PROJECT NO:	0300-464
BID PACKAGE:	TBD
DESIGNED BY:	RK/CC
CHECKED BY:	JG
ISSUE DATE:	2023-05-09
WORKING DATE:	2023-04-17

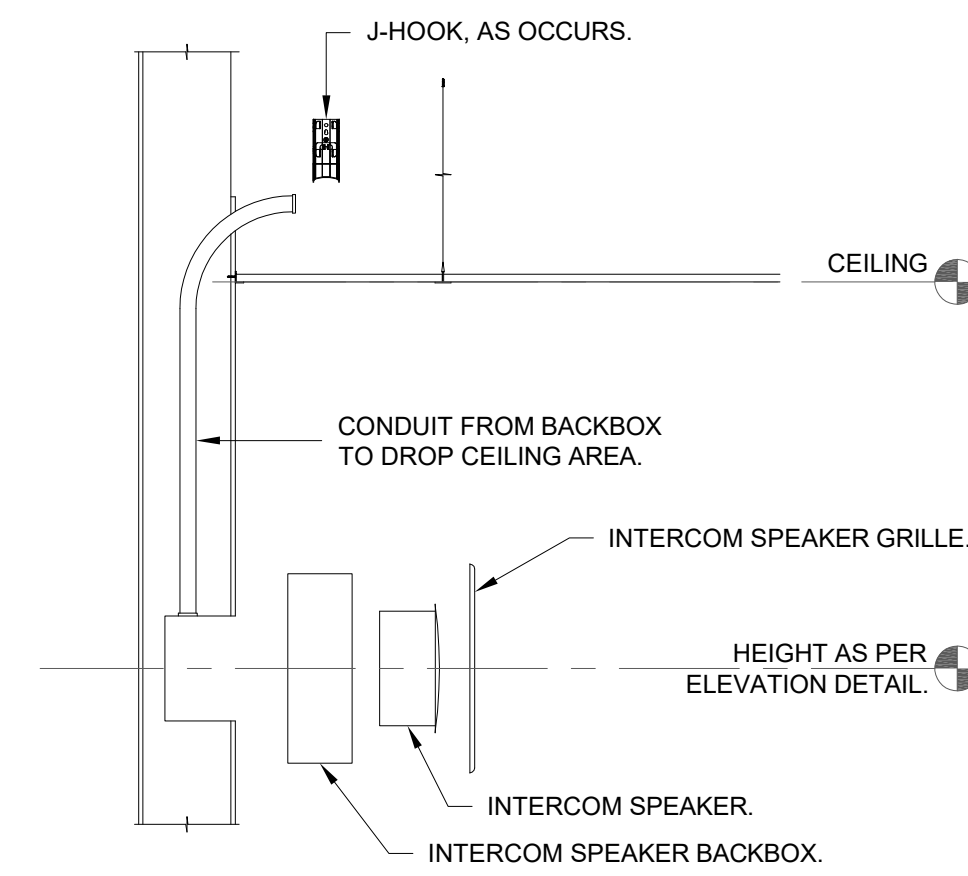
SHEET
T203

NOT USED

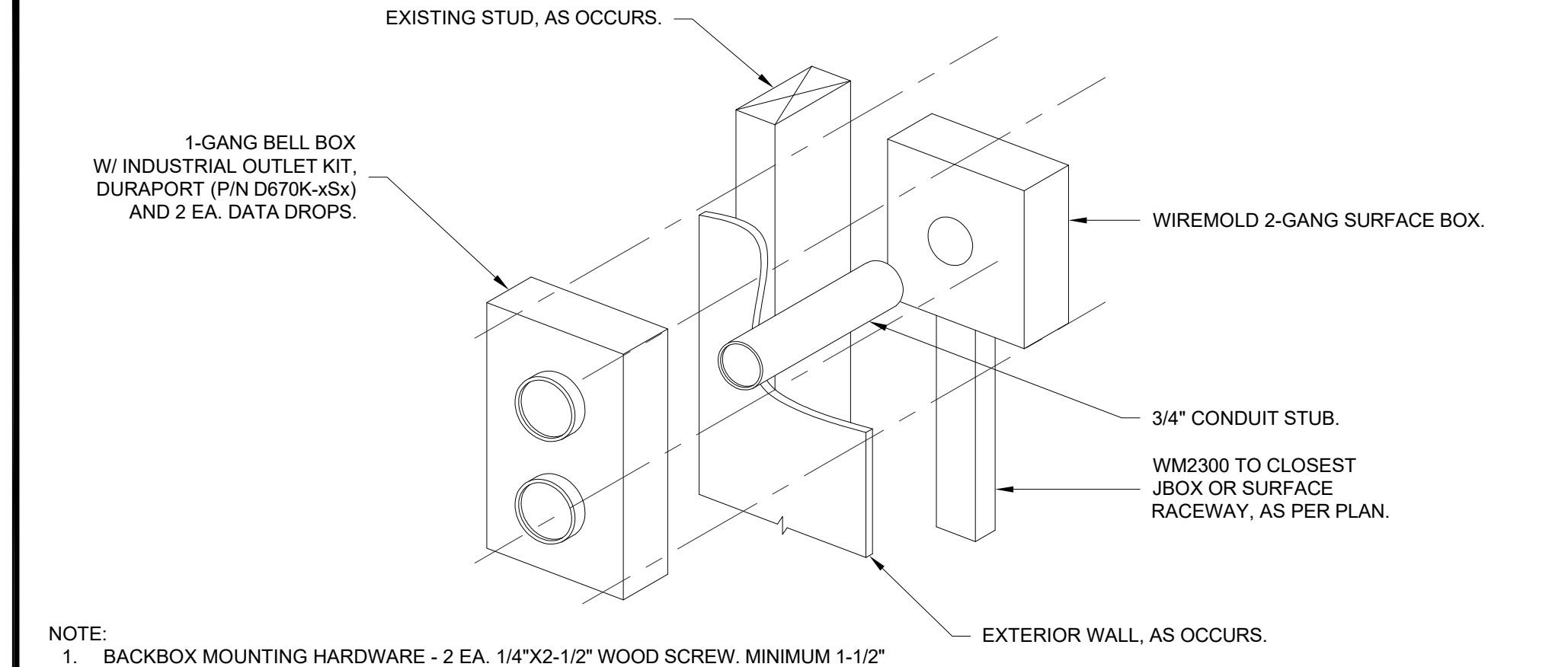
NOT USED



10 CLOCK HINGED PROTECTIVE COVER
SCALE: NONE

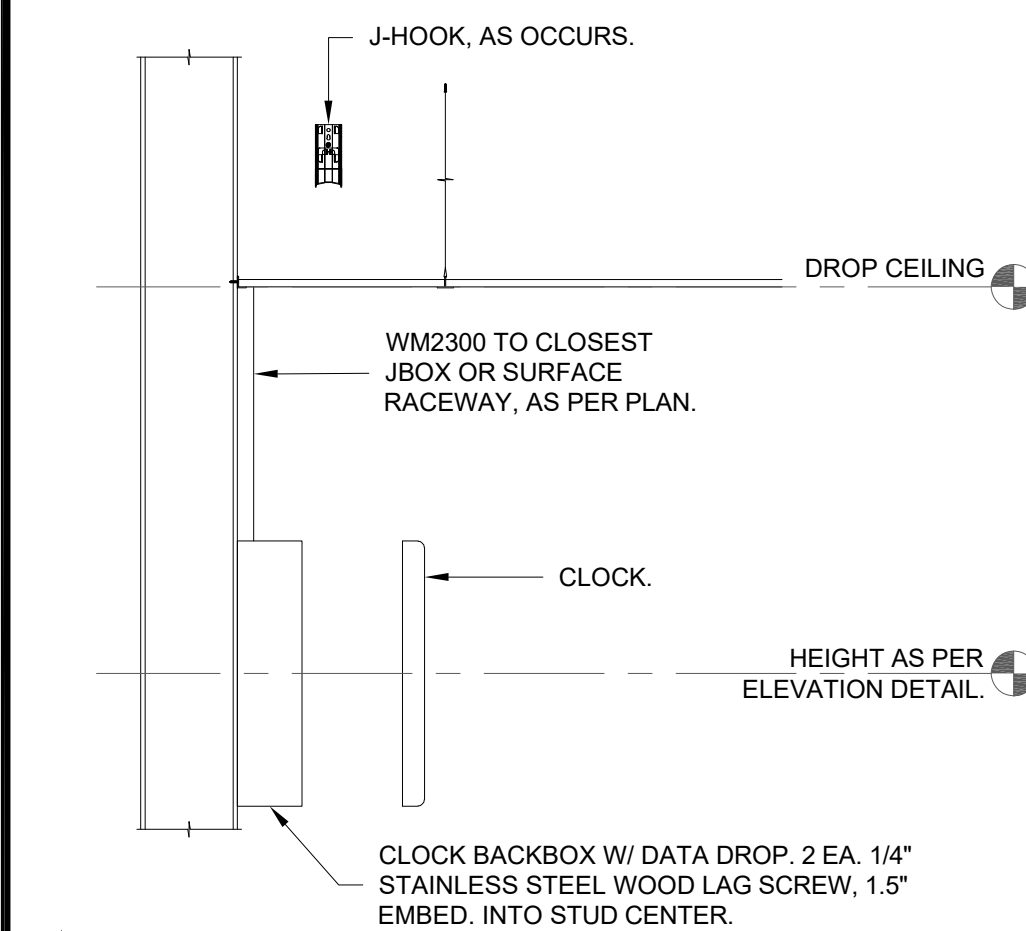


5 SURFACE MOUNTED INTERCOM SPEAKER DETAIL - EXISTING CONDUIT
SCALE: NONE

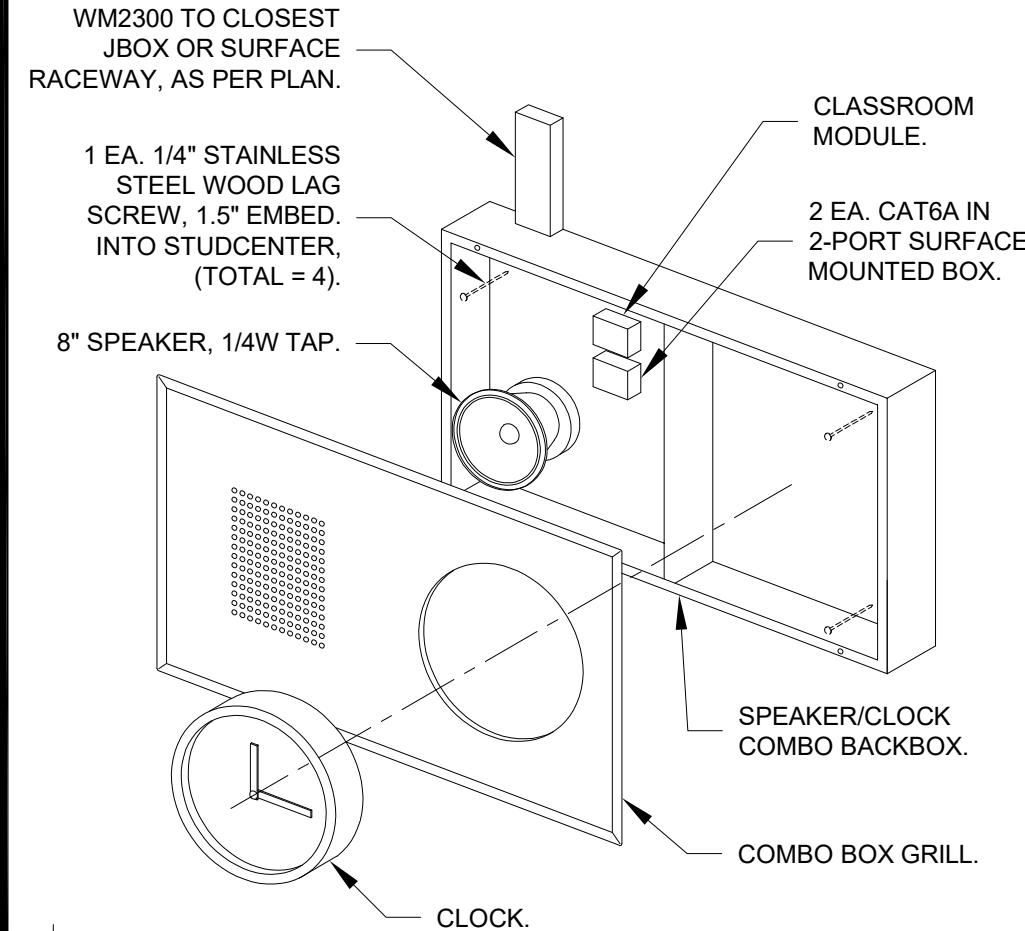


2 EXTERIOR DATA DROP MOUNTING DETAIL
SCALE: NONE

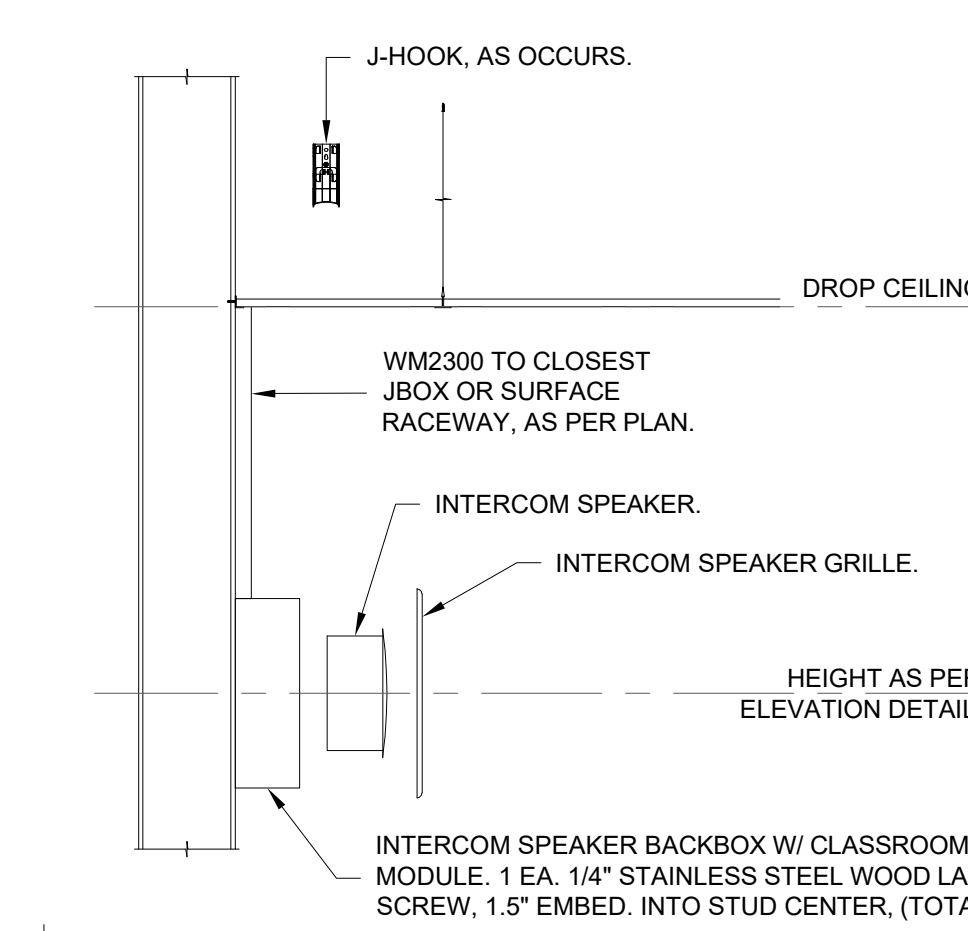
NOT USED



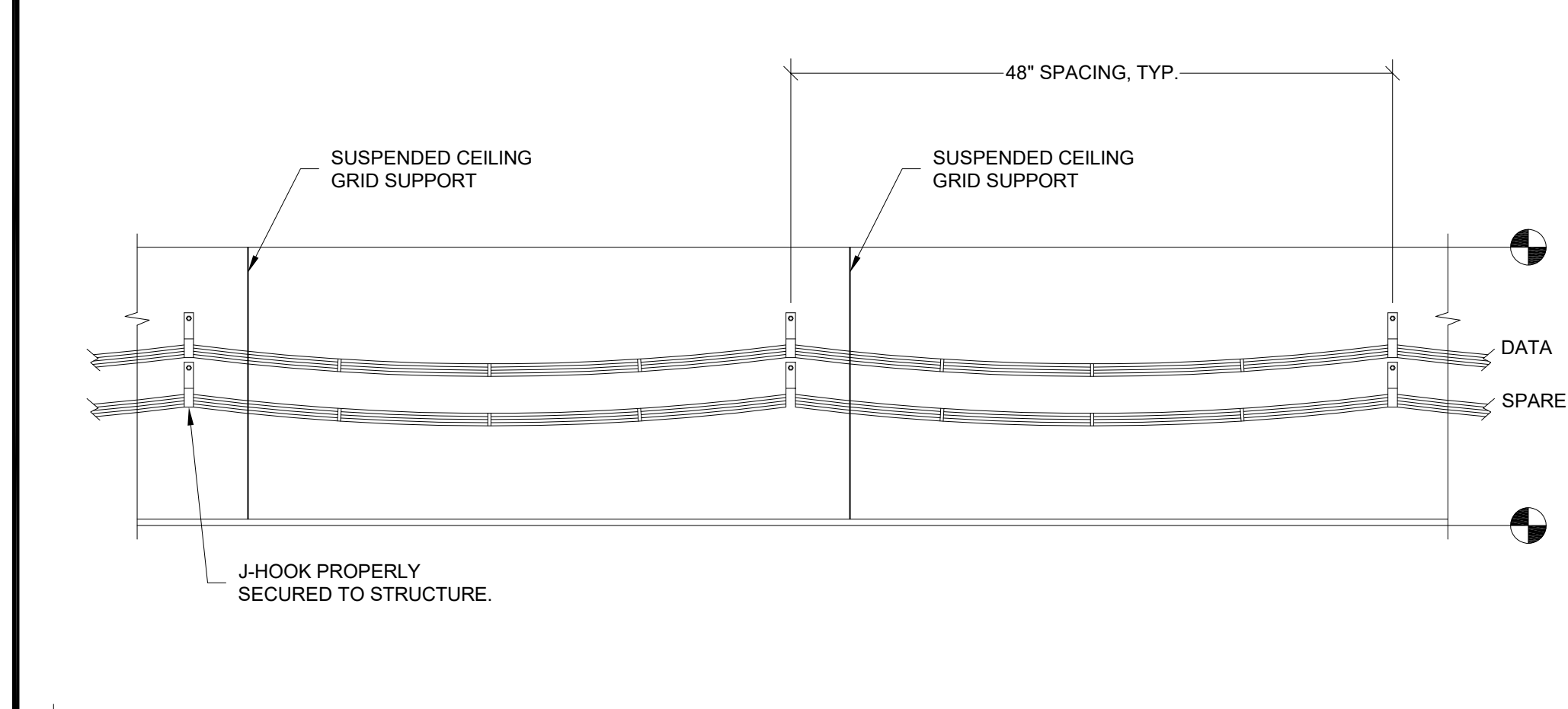
11 SURFACE MOUNTED CLOCK DETAIL
SCALE: NONE



9 CLOCK AND SPEAKER COMBO ENCLOSURE MOUNTING DETAIL
SCALE: NONE

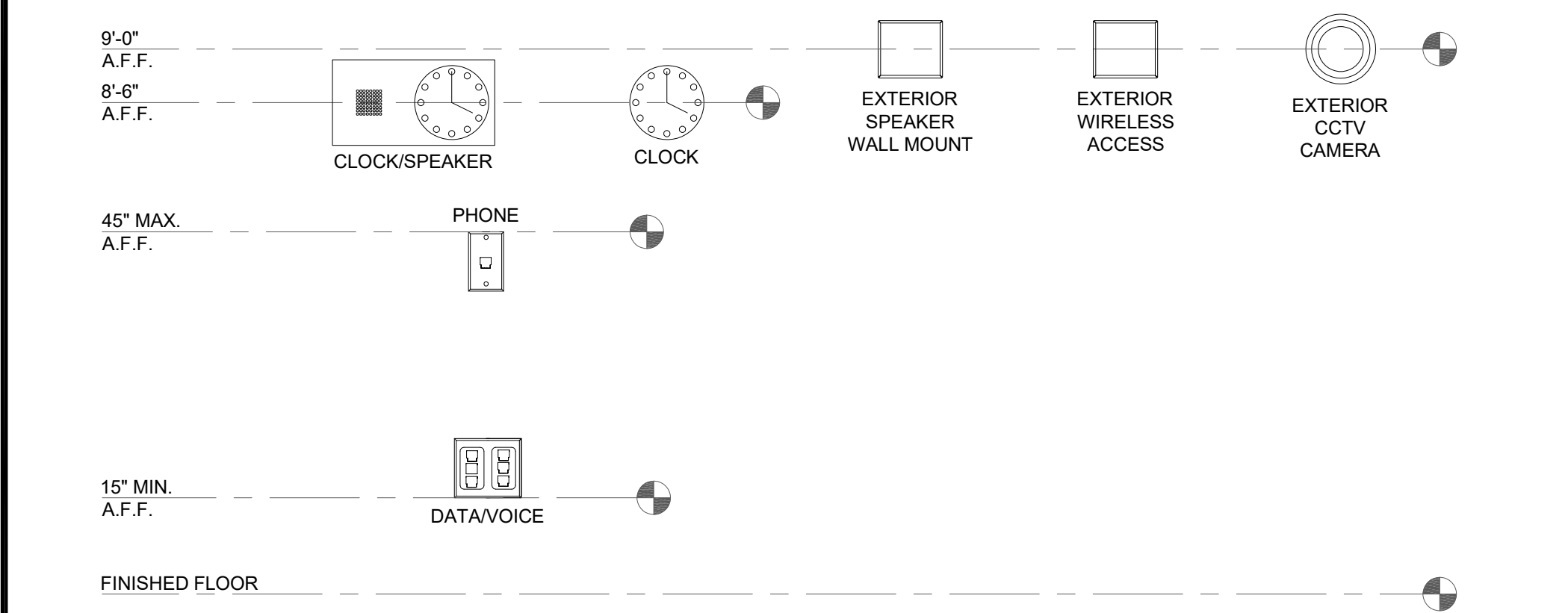


6 SURFACE MOUNTED INTERCOM SPEAKER DETAIL
SCALE: NONE

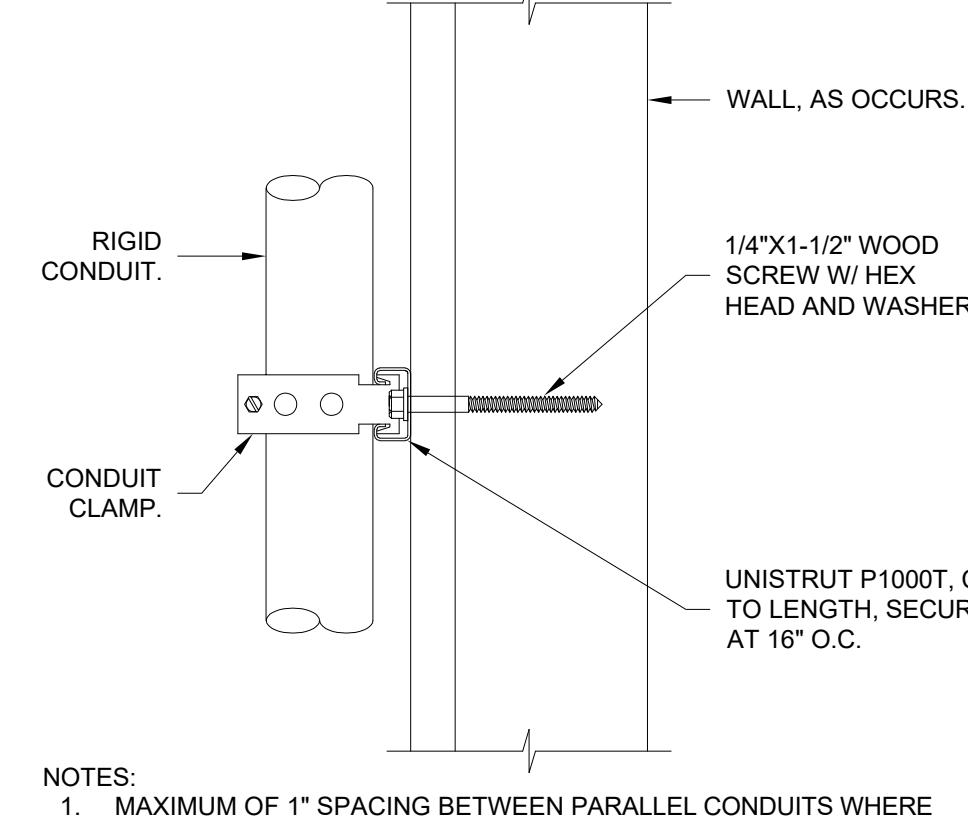


1 J-HOOK PATHWAY ABOVE CEILING DETAIL
SCALE: NONE

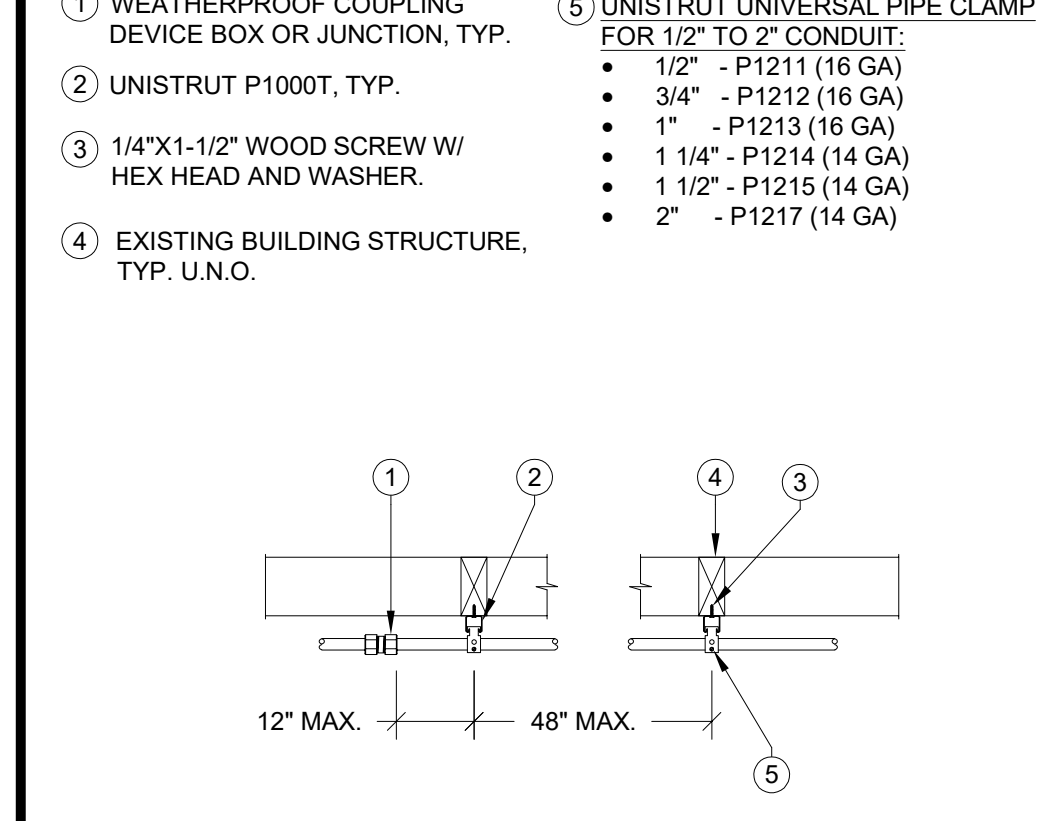
NOT USED



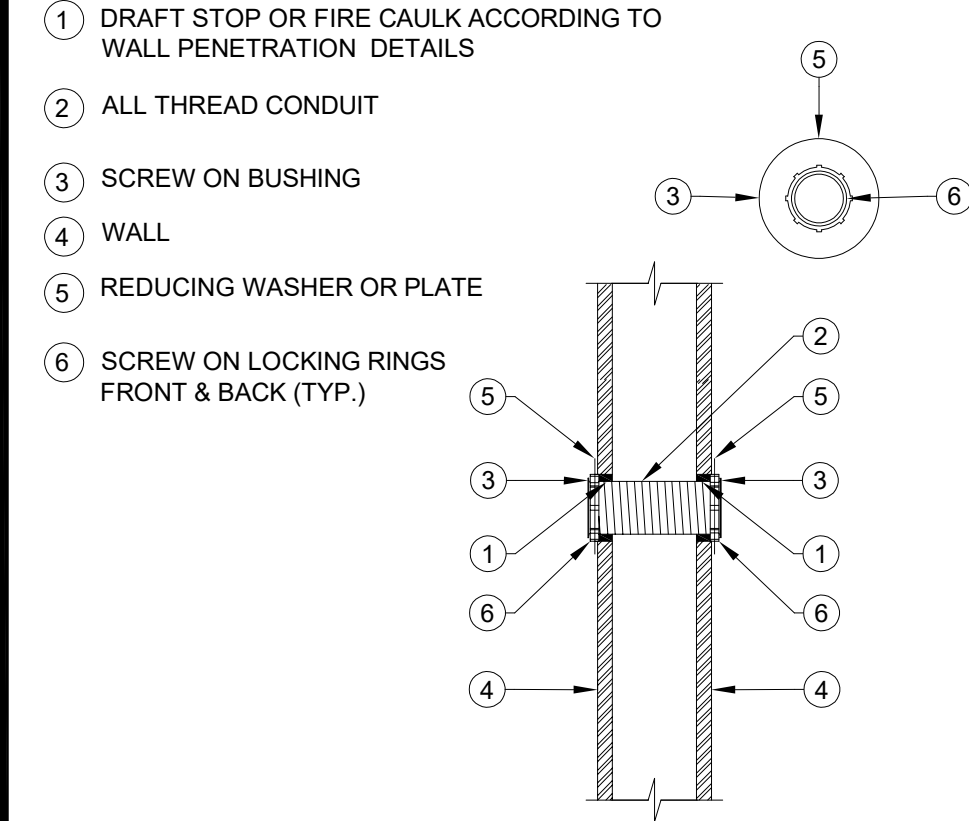
8 TYPICAL TECHNOLOGY BACKBOX MOUNTING HEIGHT ELEVATION DETAIL
SCALE: NONE



6 CONDUIT SUPPORT DETAIL - VERTICAL
SCALE: NONE

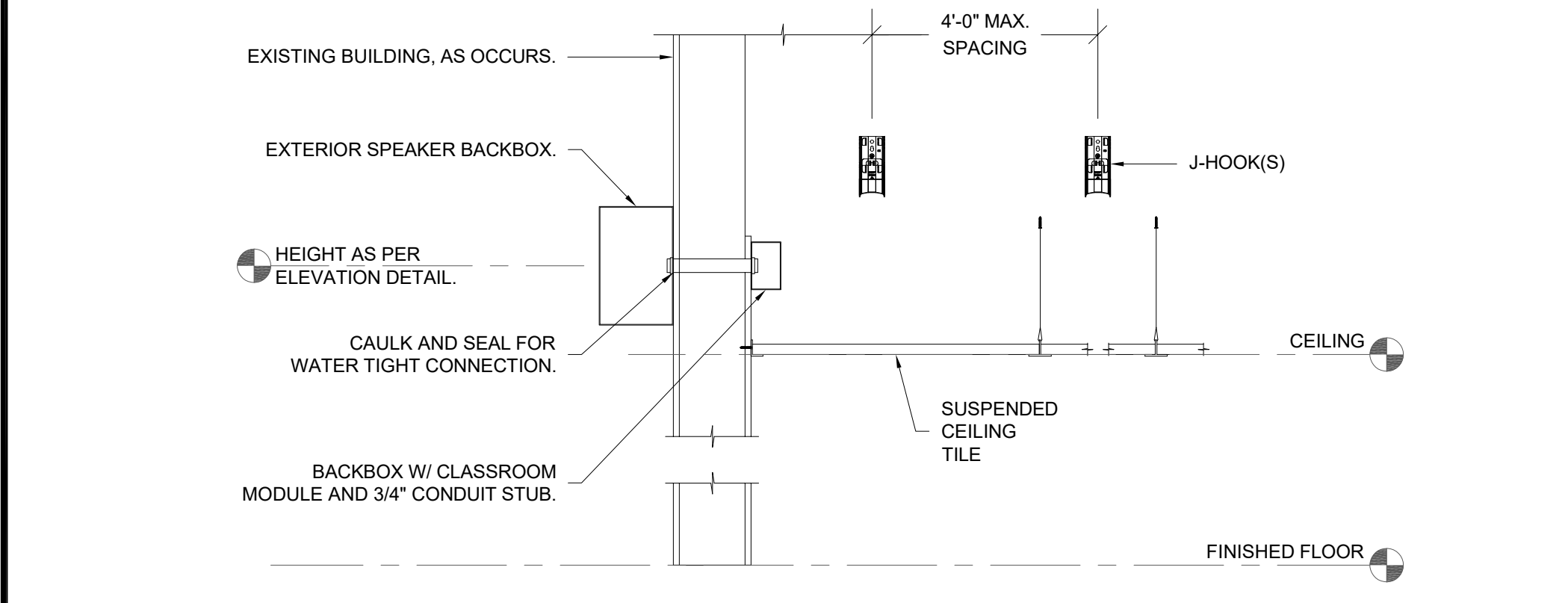


5 CONDUIT STRAP SPACING DETAIL
SCALE: NONE

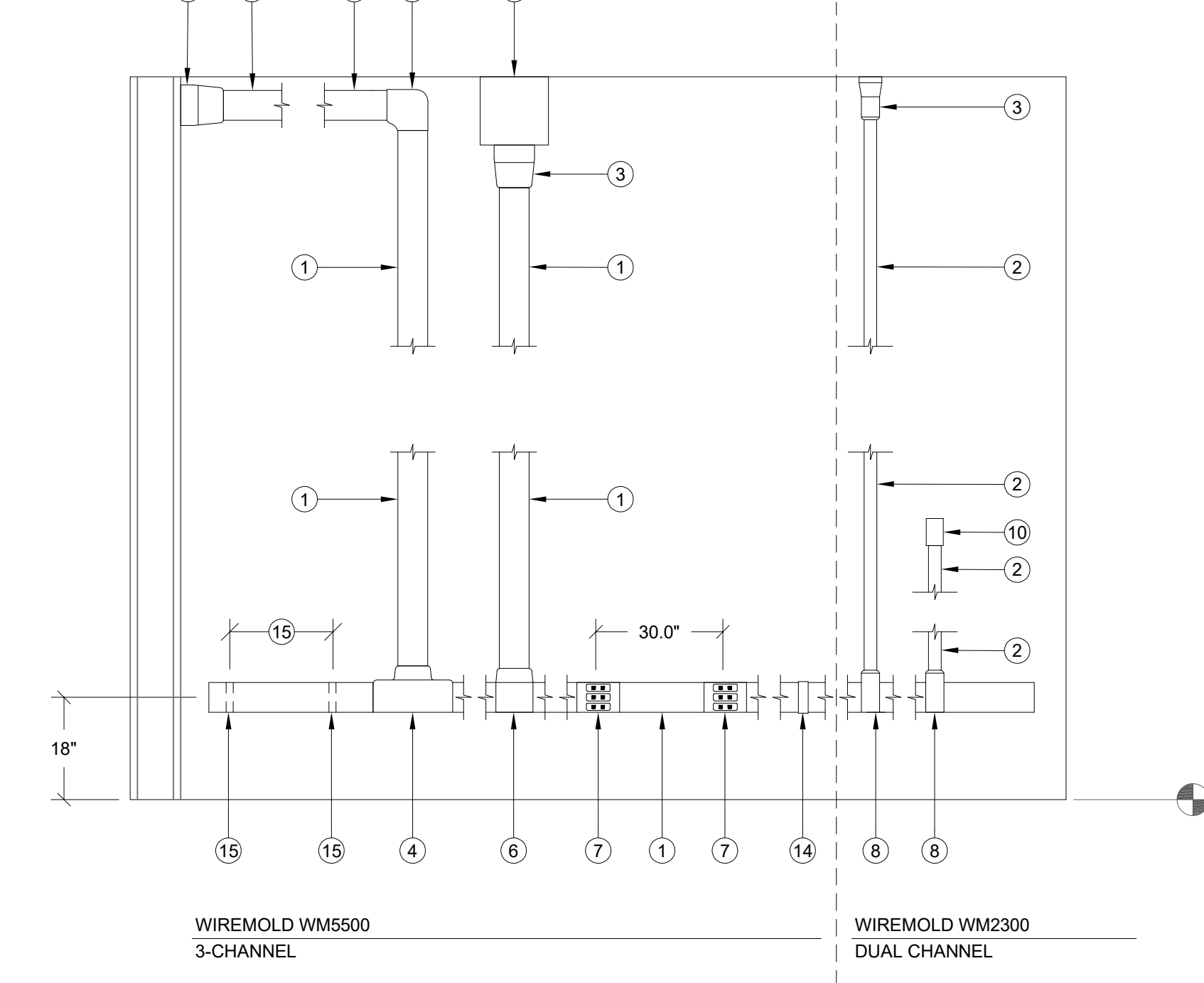


4 CONDUIT SLEEVE PENETRATION DETAIL
SCALE: NONE

NOT USED



4 EXTERIOR INTERCOM SPEAKER MOUNTING DETAIL
SCALE: NONE

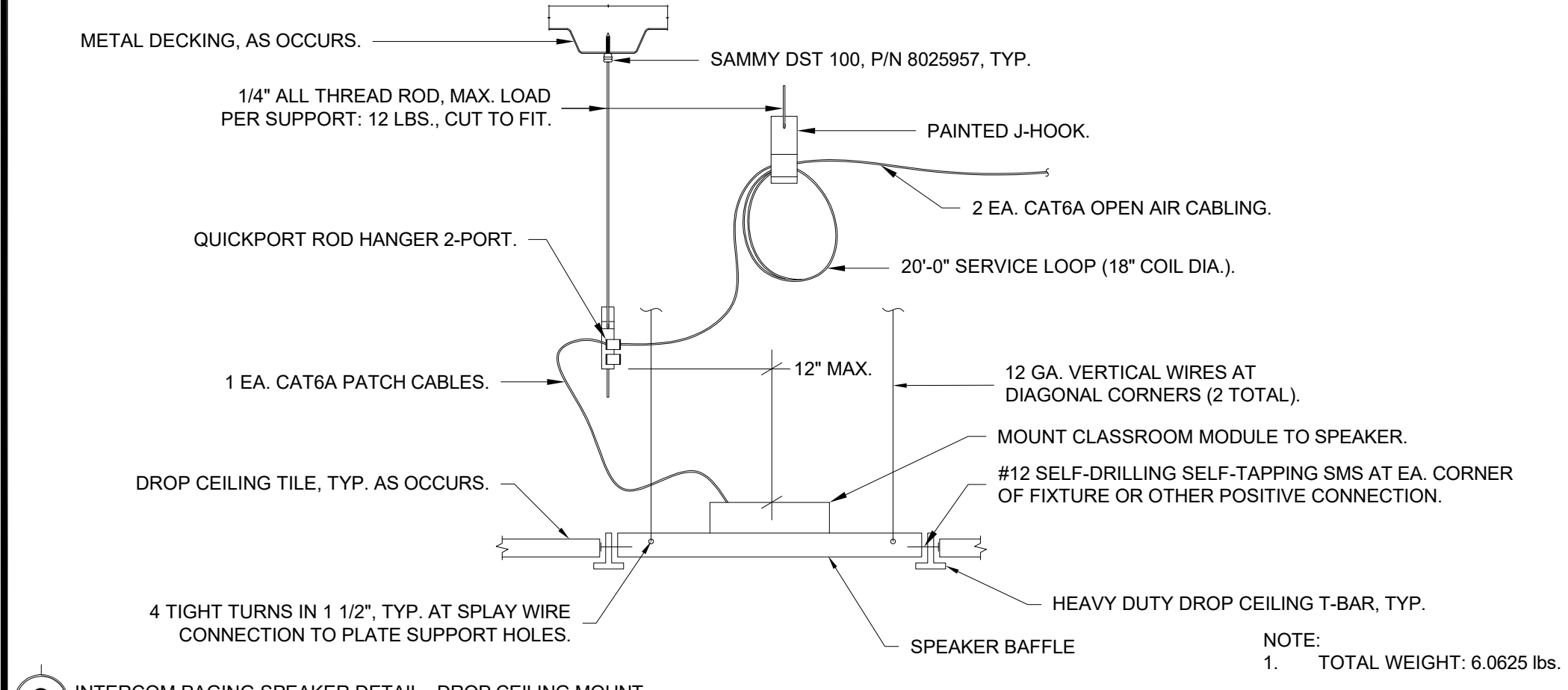


3 TYPICAL SURFACE MOUNTED RACEWAY W/ ASSEMBLY COMPONENTS DETAIL
SCALE: NONE

WIREMOLD SURFACE RACEWAY			
SYMBOL	DESCRIPTION	WM5500 PART NUMBER	WM2300 PART NUMBER
1	WIREMOLD WM5500	5500	N/A
2	WIREMOLD WM2300	N/A	2300
3	ENTRANCE END FITTING	5510D	2310A
4	FULL CAPACITY TEE (FIBER READY)	N/A	N/A
5	FULL CAPACITY FLAT ELBOW 90°	5511F0	2311DFO
6	TEE	5515	2315
7	DEVICE BRACKET W/ DUAL RJ FACEPLATE, DUPLEX FACEPLATE OR BLACK FACEPLATE AS NEEDED	5550 / 5507FRJ / 5507D / 5507B	5474 / 5574
8	TRANSITION FITTING FOR WM2300	5574	2348
9	WALL MOUNTED PULL BOX SIZE AS NOTED PER PLAN	N/A	2300
10	DEVICE BOX	N/A	2348
11	END CAP	5510	2310B
12	INTERNAL ELBOW	5517FO	2317DFO
13	EXTERNAL ELBOW	5518FO	2318DFO
14	BASE SEAM COVER	5506	2306
15	WIRE CLIP	5500WC (INSTALL CLIPS AT 48\"/>	
16	TRANSITION FITTING FOR WM5500 TO WM5400	5574A	N/A

NOTE:
1) DEVICE BOX (10) TO BE USED TO TRANSITION OVER CONDUIT AND SHALLOW WALL OBSTRUCTIONS (I.E. BULLETIN BOARD, TRIM, CASEWORK, ETC.) WHERE REQUIRED. UNDER NO CIRCUMSTANCES SHOULD SURFACE RACEWAY BE BENT OVER OBSTRUCTIONS.

NOT USED



3 INTERCOM PAGING SPEAKER DETAIL - DROP CEILING MOUNT
SCALE: NONE



KMM SERVICES, INC
TECHNOLOGY & FIRE LIFE SAFETY

5433 El Camino Ave. Suite 5
Carmichael, CA 95608
Office: (916) 359-4000 www.kmm.com



Copyright © 2023

These drawings and specifications and the ideas, designs and arrangements represented thereby are and shall remain the property of KMM Services, Inc. and no part thereof shall be copied, disclosed to others, or used in connection with any other work or project other than the specific project for which they have been prepared and developed without the written consent of KMM Services, Inc. Visual contact with these drawings or specifications shall constitute conclusive evidence of these restrictions.

IF DRAWING IS NOT 30"x42" IT IS A REDUCED PRINT

SHEET REVISIONS

DELTA	DESCRIPTION	DATE

SITE KEY PLAN

PROJECT
SACRAMENTO CITY USD
CROCKER RIVERSIDE
TELE-CENTER
UPGRADE PROJECT
2970 RIVERSIDE BLVD.
SACRAMENTO, CA. 95818

SHEET TITLE
TECHNOLOGY
DETAILS

DRAWING STATUS
CONSTRUCTION DOCUMENTS

PROJECT NO:	0300-464
BID PACKAGE:	TBD
DESIGNED BY:	RK/CC
CHECKED BY:	JG
ISSUE DATE:	2023-05-09
WORKING DATE:	2023-04-17
REVISION	

SHEET
T800

