



Business Services

Contracts Office

5735 47th Avenue • Sacramento, CA 95824

(916) 643-2464

Gerardo Castillo, Chief Business Officer

Jessica Sulli, Contract Specialist

ADDENDUM NO. 2

Date: January 26, 2018

Issued by: Sacramento City Unified School District

Project: Phoebe Hearst Class Size Reduction Restroom

You are hereby notified of the following changes, clarifications, or modifications to the original Contract Documents, Specifications, and Drawings. This Addendum shall supersede the original project documents, and shall take precedence over anything to the contrary therein. All Addenda shall be acknowledged in the Bid Form. Failure to do so may result in disqualification of the bid. All other conditions remain unchanged.

SPECIFICATIONS

ITEM # 2.1 Section 01 22 00 – Alternates – Addendum # 2: Add the attached Section 01 22 00 – Alternates – Addendum # 2, to the contract documents.

ITEM # 2.2 Section 08 71 00 – Door Hardware: Replace this section with the attached Section 08 71 00 – Door Hardware – Addendum # 2.

ITEM # 2.3 Section 10 28 13 – Toilet Accessories, Item # 2.3.A.1 – Electric Hand Dryers - Model: Change the Model from “XL-SB” to “XL-BW-1.1N”.

DRAWINGS

ITEM # 2.4 Sheet CCD-1 GS101.1 – Accessible Path Legend, Note L: Add the following sentence to the end of this note: “PROVIDE RESTROOM SIGNAGE PER A13/CCD1-A591, AND PER SPECIFICATION SECTION 10 14 23.”

ITEM # 2.5 Sheet CCD-1 A101 – Partial Floor Plans: Replace this sheet with the attached Sheet ADD-2 CCD-1 A101 – Partial Floor Plans. All changes have been clouded.



ITEM # 2.6 Sheet CCD-1 A571 – Details: Replace this sheet with the attached Sheet ADD-2 CCD-1 A571 – Details. All changes have been clouded.

END OF ADDENDUM NO. 2

SECTION 01 22 00 – ALTERNATES – ADDENDUM # 2

PART 1 – GENERAL

1.1 RELATED DOCUMENTS AND PROVISIONS

- A. All Contract Documents should be reviewed for applicable provisions related to the provisions in this document, including without limitation:
 - 1. General Conditions;
 - 2. Special Conditions;
 - 3. Bid Form and Proposal;
 - 4. Instruction to Bidders.

1.2 DESCRIPTION

- A. The items of work indicated below propose modifications to, substitutions for, additions to and/or deletions from the various parts of the Work specified in other Sections of the Specifications. The acceptance or rejection of any of the alternates is strictly at the option of the District subject to District's acceptance of Contractor's stated prices contained in this Proposal.

1.3 GENERAL

- A. Where an item is omitted, or scope of Work is decreased, all Work pertaining to the item whether specifically stated or not, shall be omitted and where an item is added or modified or where scope of Work is increased, all Work pertaining to that required to render same ready for use on the Project in accordance with intention of Drawings and Specifications shall be included in an agreed upon price amount.

1.4 BASE BID

- A. The Base Bid includes all work required to construct the Project completely and in accordance with the Contract Documents.

1.5 ALTERNATES

- A. The Alternate descriptions below are general in nature and for reference purposes only. The Contract Documents, including, without limitation, the Drawings and Specifications, must be referred to for the complete scope of Work.
 - 1. Alternate # 1 – Deductive: Deduct pricing for demolition, disposal, removal, and replacement of exterior concrete slab on grade walkway, labeled as Alternate # 1 on Sheet ADD-2 CCD-1 A101. ze

PART 2 – PRODUCTS – NOT APPLICABLE

PART 3 – EXECUTION – NOT APPLICABLE

END OF SECTION 01 22 00 – ADDENDUM # 2.

SECTION 08 71 00 – DOOR HARDWARE – ADDENDUM # 2

PART 1 – GENERAL

1.1 RELATED DOCUMENTS

- A. Drawings and general provisions of Contract, including General and Supplementary Conditions of Division 1 Specification Sections, apply to this Section.

1.2 SUMMARY

- A. This Section includes items known commercially as finish or door hardware that are required for swing, sliding, and folding doors, except special types of unique hardware specified in the same sections as the doors and door frames on which they are installed.
- B. This Section includes the following, but is not necessarily limited to:
 - 1. Door Hardware.
 - 2. Thresholds, gasketing and weather-stripping.
 - 3. Door silencers.

1.3 RELATED SECTIONS

- A. The following sections are noted as containing requirements that relate to this Section, but may not be limited to this listing.
 - 1. Section 06 10 00 – Rough Carpentry.
 - 2. Section 08 11 13 – Hollow Metal Doors and Frames.

1.4 REFERENCES (Use date of standard in effect as of Bid date).

- A. 2016 California Building Code, with Amendments.
- B. ADAAG – Americans with Disabilities Act (ACT) Accessibility Guidelines for Buildings and Facilities.
- C. BHMA – Builders Hardware Manufacturers Association.
- D. CCR – California Code of Regulations, Title 24, Part 2, California State Accessibility Standards.
- E. DHI – Door and Hardware Institute.
- F. NFPA – National Fire Protection Association.
 - 1. NFPA 80 – Fire Doors and Windows

- 2. NFPA 101 – Life Safety Code
- 3. NFPA 105 – Smoke and Draft Control Door Assemblies
- G. CBC – California Building Code
- H. UL – Underwriters Laboratories
 - 1. UL 10B – Fire Tests of Door Assemblies
 - 2. UL 305 – Panic Hardware
- I. WHI – Warnock Hersey Incorporated
- J. SDI – Steel Door Institute

1.5 SUBMITTALS AND SUBSTITUTIONS

- A. General: Submit in accordance with Conditions of the Contract and Division 1 Specification sections.
- B. Submit product data (catalog cuts) including manufacturers’ technical product information for each item of door hardware, installation instructions, maintenance of operating parts and finish, and other information necessary to show compliance with requirements.
- C. Prepare and submit one (1) PDF, or six (6) hard copies for the Architect’s approval a complete schedule listing all items of finish hardware to be furnished and installed on the project; PDF is preferred. A vertical type will be used as illustration by the Sequence of Format for the Hardware Schedule as published by the Door and Hardware Institute. The Schedule should be reviewed, prior to submittal by an Architectural Hardware Consultant, who shall affix his or her seal attesting to the completeness and correctness of the schedule. Organized vertically into “Hardware Sets” with index of doors and headings, indicating complete designations of every item required for each door or opening. Include following information:
 - 1. Type, style, function, size and finish of each hardware item.
 - 2. Name, part number and manufacturer of each item.
 - 3. Fastenings and other pertinent information.
 - 4. Location of hardware set coordinated with floor plans and door schedule.
 - 5. Explanation of all abbreviations, symbols and codes contained in schedule.
 - 6. Mounting locations for hardware.

7. Door and frame sizes and materials.
 8. List of manufacturers used and their nearest representative with address and phone number.
 9. Keying information.
- D. Make substitution requests in accordance with Division 1. Substitution requests must be made prior to bid date. Include product data and indicate benefit to the project. Furnish samples of any proposed substitution.
- E. Keying Schedule: Submit separate detailed schedule indicating clearly how the Owner's final instructions on keying of locks has been fulfilled.
- F. Templates for doors, frames, and other work specified to be factory prepared for the installation of door hardware. Check shop drawings of other work to confirm that adequate provisions are made for locating and installing door hardware to comply with indicated requirements.
- G. Furnish as-built/as-installed schedule with closeout documents, including keying schedule, wiring/riser diagrams, manufacturers' installation, adjustment and maintenance information.

1.6 QUALITY ASSURANCE

- A. Obtain each type of hardware (latch and lock sets, hinges, closers, exit devices, etc.) from a single manufacturer.
- B. Supplier Qualifications: A recognized architectural door hardware supplier, with warehousing facilities in the project's vicinity, that has a record of successful in-service performance for supplying door hardware similar in quantity, type, and quality to that indicated for this project and that employs an experienced Architectural Hardware Consultant (AHC) who is registered in the continuing education program as administered by the Door and Hardware Institute. This person or persons shall be available to the Owner, Architect, and Contractor, at reasonable times during the course of the Work, for consultation.
1. Responsible for detailing, scheduling and ordering of finish hardware.
 2. Meet with Owner to finalize keying requirements and to obtain final instructions in writing.
- C. Hardware Installer: Company specializing in the installation of commercial door hardware with five (5) years documented experience.
- D. Fire Rated Openings: Provide door hardware for fire-rated openings that complies with NFPA Standard No. 80 and requirements of authorities having jurisdiction. Provide only items of door hardware that are listed and tested by UL or Warnock Hersey for given type/size opening and degree of label. Provide proper latching hardware, door closers, approved-bearing hinges and seals whether listed in the Hardware Schedule or not.

1. Where emergency exit devices are required on fire-rated doors (with supplementary marking on doors' UL labels indicating "Fire Door to be Equipped with Fire Exit Hardware"), provide UL label on exit devices indicating "Fire Exit Hardware".

- E. Exit Doors: Operable from inside with single motion without the use of a key or special knowledge or effort.

1.7 DELIVERY, STORAGE AND HANDLING

- A. Coordinate delivery of packaged hardware items to the appropriate locations (shop or field) for installation.
- B. Hardware items shall be individually packaged in manufacturers' original containers, complete with proper fasteners. Clearly mark packages on outside to indicate contents and locations in hardware schedule and in work.
- C. Provide locked storage area for hardware, protect from moisture, sunlight, paint, chemicals, etc.
- D. Inventory door hardware jointly with representatives of hardware supplier and hardware installer until each is satisfied that count is correct.

1.8 WARRANTY

- A. Provide warranties of respective manufacturers' regular terms of sale from day of final acceptance as follows:
 1. Closers: Ten (10) years, except electronic closers which shall be two (2) years.
 2. Exit Devices: Ten (10) years
 3. All Other Hardware: Two (2) years

1.9 MAINTENANCE

- A. Maintenance Tools and Instructions: Furnish a complete set of specialized tools and maintenance instructions as needed for Owner's continued adjustment, maintenance, and removal and replacement of door hardware.

1.10 PRE-INSTALLATION CONFERENCE

- A. Convene a pre-installation conference at least one (1) week prior to beginning work of this section.
- B. Attendance: Architect, Construction Manager, Contractor, hardware supplier, installer, key District personnel, and Project Inspector. Manufacturer's representative for locks and closers and representative of SCUSD's locksmith department.

- C. Agenda: Review hardware schedule, products, installation procedures and coordination required with related work. Review District’s keying standards.

PART 2 – PRODUCTS

2.1 MANUFACTURERS

	<u>Item</u>	<u>Manufacturer</u>	<u>Acceptable Substitutes</u>
A.	Hinges	Ives	NONE (District Standard)
B.	Continuous Hinges	Ives	NONE (District Standard)
C.	Locks, Latches & Cylinders	Schlage	NONE (District Standard)
D.	Closers (No cush or hold open)	LCN	Norton
E.	Push, Pulls, and Protection Plates	Ives	Trimco, BBW
F.	Flush Bolts (Auto)	Ives	Trimco, BBW
G.	Dust Proof Strikes	Ives	Trimco, BBW
H.	Stops	Ives	Trimco, BBW
I.	Overhead Stops	Do not use	
J.	Thresholds	National Guard	Pemko, Zero
K.	Seals & Bottoms	National Guard	Pemko, Zero

2.2 MATERIALS

- A. Hinges: Exterior out-swinging door butts shall be non-ferrous material and shall have stainless steel hinge pins. All doors to have non-rising pins.
1. Hinges shall be sized in accordance with the following:
 - a. Height:
 - i. Doors up to 41 inches wide: 4-1/2 inches
 - ii. Doors 42 inches to 48 inches wide: 5 inches
 - b. Width: Sufficient to clear frame and trim when door swings 180 degrees.

- c. Number of Hinges: Furnish three (3) hinges per leaf to 7 feet 5 inches in height. Add one for each additional 2 feet in heights.
2. Furnish non-removable pins (NRP) at all exterior out-swing doors and interior key lock doors with reverse bevels.
- B. Continuous Hinges: As manufactured by Ives. UL rated as required.
- C. Heavy Duty Cylindrical Locks and Latches: Schlage “D” Series as scheduled with “Rhodes” (RHO) design, fastened with through-bolts.
1. Chassis: Cylindrical design, corrosion-resistant plated cold-rolled steel.
 2. Locking Spindle: One piece stainless steel, interlocking design.
 3. Latch Retractors: Forged steel. Balance of inner parts: Corrosion-resistant plated steel, or stainless steel.
 4. Lever Trim: Accessible design, independent operation, spring-cage supported, minimum 2 inches clearance from lever mid-point to door face.
 5. Locks shall be of such construction that when locked, the door may be opened from within by using lever and without the use of a key or special knowledge.
 6. Vandalgard Function: Five (5) year warranty, outside lever is disengaged when in the locked mode.
 7. Rosettes: Minimum 3-7/16 inch diameter for coverage of ANSI/DHI A115.18, door preparation, through-bolt lugs on both spring cages to fully engage this pattern.
 8. Springs: Full compression type.
 9. Strikes: 16 gage curved steel, bronze or bass with 1 inch deep box construction, lips of sufficient length to clear trim and protect clothing.
- D. Closers: LCN as scheduled. Place closers inside buildings, stairs, room, etc.
1. Door closer cylinders shall be of high strength cast iron construction with double heat treated pinion shaft to provide low wear operating capabilities of internal parts throughout the life of the installation. All door closers shall be tested to ANSI/BHMA A156.4 test requirements by a BHMA certified testing laboratory. A written certification showing successful completion of a minimum of 10,000,000 cycles must be provided.
 2. All door closers shall be fully hydraulic and have full rack and pinion action with a shaft diameter of a minimum of 11/16 inch and piston diameter of 1 inch to ensure longevity and durability under all closer applications.

3. All parallel arm closers shall incorporate one piece solid forged steel arms with bronze bushings. 1-9/16 "steel stud shoulder bolts, shall be incorporated in regular arms, hold-open arms, arms with hold open and stop built in shall not be used under any circumstance. All other closers to have forged steel main arms for strength, durability, and aesthetics for versatility of trim accommodation, high strength and long life.
 4. All parallel arm closers so detailed shall provide advanced backcheck for doors subject to severe abuse or extreme wind conditions. This advanced backcheck shall be located to begin cushioning the opening swing of the door at approximately 45 degrees. The intensity of the backcheck shall be fully adjustable by tamper resistant non-critical screw valve.
 5. Closers shall be installed to permit doors to swing 180 degrees.
 6. All closers shall utilize a stable fluid withstanding temperature range of 120 degrees F. to -30 degrees F. without requiring a seasonal adjustment of closer speed to properly close the door.
 7. Drop brackets are required at narrow head rails.
 8. Maximum effort to operated doors shall not exceed 5.0 lbs. for exterior doors and 5 lbs. for interior doors, such pull or push effort being applied at right angles to hinged doors. Compensating devices or automatic door operators may be utilized to meet the above standards. When fire doors are required the maximum effort to operate the door may be increased not to exceed 15lbs. All closers shall be adjusted to operate with the minimum amount of opening force and still close and latch the door. Reference CBC Sections 11B-404.2.8, 11B-404.2.9, and ANSI A117.1.
 9. Provide sex-bolted or through bolt mounting for all door closers, or threaded machine screws with backing (use fasteners supplied by manufacturer) (no tek-screws).
- E. Flush Bolts and Dust Proof Strikes:
1. Automatic flush bolts.
 2. Provide dust proof strikes at openings using bottom bolts.
- F. Door Stops:
1. Unless otherwise noted in Hardware Sets, provide wall type with appropriate fasteners. Where wall type cannot be used, provide floor type.
 2. Do not install floor stops more than 4 inches from the face of the wall or partition, per CBC Section 11B-307.2
- G. Protection Plates: Fabricate either kick, armor, or mop plates with four (4) beveled edges. Provide kick plates 10 inches high and 2 inches LDW. Sizes of

armor and mop plates shall be listed in the Hardware Schedule. Furnish with machine or wood screws of bronze or stainless to match other hardware.

- H. Lock Protectors: Lock astragals shall be provided with internally threaded fasteners for flat head machine screws. No hex head or carriage bolt fasteners will be permitted. Must be through bolted to door.
- I. Thresholds: As Scheduled and per details:
 - 1. Thresholds shall not exceed 1/2 inches in height, with a beveled surface of 1:2 maximum slope, or to meet current ADA specs.
 - 2. Set thresholds in a full bed of butyl-rubber or polyisobutylene mastic sealant complying with requirements in Division 7 “Thermal and Moisture Protection”.
 - 3. Use 1/4 inch fasteners, red-head flat-head sleeve anchors (SS/FHSL).
 - 4. Thresholds shall comply with CBC Sections 11B-302, 11B-303, and 11B-404.2.5.
- J. Seals: Sponge silicone gasketing to meet ASTM E 283 test standards. Provide silicone gasket at all rated and exterior doors.
- K. Rain Drips: Provide rain drips at the heads of all exterior doors where there is not enough overhang to protect the opening.
- L. Door Shoes and Door Top Caps: Provide door shoes at all exterior wood doors and top caps at all exterior out-swing doors.
- M. Silencers: Furnish silencers for interior hollow metal frames, 3 for single doors, 2 for pairs of doors. Omit where should or light seals occurs, or for fire-resistive-rated door assemblies.

2.3 KEYING

- A. Furnish a Grand Master, Master, keyed alike or keyed different system as directed by the District/Owner or Architect. Sacramento Unified School District to verify Schlage Classic keyway per District standards. High Schools to be furnished in E Classic Keyway. Middle Schools and Elementary Schools to be furnished in F Classic Keyway. Verify with SCUSD locksmith department.
 - 1. All cylinders to be factory keyed and shipped with temporary construction cores. Unless otherwise approved by SCUSD locksmith department.
 - 2. A/E to meet with designed District project manager, Schlage representative, District locksmith and site personnel to determine keying schedule. The keying schedule is to be incorporated into project specification prior to supply.

- B. Provide construction keying for doors requiring locking during construction; remove temporary cores or inserts immediately prior to District occupancy. Furnish permanent keys (and cores if applicable) directly to District.
- C. Supply keys and blanks as follows:
 - 1. Supply Schlage Key blank part No. 35-131 XQ06-878, or Primus to match existing.
 - 2. Stamp keys with key group symbol, as directed by SCUSD’s locksmith department.
 - 3. Stamp key with DO NOT DUPLICATE.
 - 4. Supply five (5) each cut change keys for each different change key group.
 - 5. Supply eight (8) cut master keys for each different master key set.
 - 6. Issue all keys to SCUSD locksmith department only.

2.4 FINISHES

- A. Generally to be satin chromium US26D (626) unless otherwise noted.
- B. Furnish push plates, pull plates and kick or armor plates in satin stainless steel US32D (630) unless otherwise noted.
- C. Door closers shall be powder-coated to match other hardware, unless otherwise noted.
- D. Aluminum items to be finished anodized aluminum US28 (628), except thresholds which can be furnished as standard mill finish.

2.5 FASTENERS

- A. Screws for strikes, face plates and similar items shall be flat head, countersunk type, provide machine screws for metal and standard wood screws for wood.
- B. Screws for butt hinges shall be flathead, countersunk, full-thread type.
- C. Fastening of closer bases or closer shoes to doors shall be by means of sex bolts and spray painted to match closer finish or machine screws with proper backing.
- D. Provide expansion anchors for attaching hardware items to concrete or masonry.
- E. All exposed fasteners shall have a Phillips head.
- F. Finish of exposed screws to match surface finish of hardware or other adjacent work.

- G. Use only factory supplied mounting screws.

PART 3 – EXECUTION

3.1 INSPECTION

- A. Verify that doors and frames are square and plumb and ready to receive work and dimensions are as instructed by the manufacturer.
- B. Beginning of installation means acceptance of existing conditions.

3.2 INSTALLATION

- A. Install hardware in accordance with manufacturer's instructions and requirements of DHI.
- B. Mounting heights for hardware shall be as recommended by the Door and Hardware Institute. All hand-activated door opening hardware shall be centered between 34 inches and 44 inches above the finish floor, per CBC Section 11B-404.2.7.
- C. Use the templates provided by hardware item manufacturer.
- D. Wherever cutting and fitting is required to install hardware onto or into surfaces which are later to be painted or finished in another way, coordinate removal, storage and reinstallation or application of surface protection with finishing work specified in Division 9. Do not install surface-mounted items until finishes have been completed on the substrate.
- E. Set units level, plumb and true to line and location. Adjust and reinforce the attachment substrate as necessary for proper installation and operation.
- F. Drill and countersink units which are not factory-prepared for anchorage fasteners. Space fasteners and anchors in accordance with industry standards.
- G. Set thresholds for exterior doors in full bed of butyl-rubber sealant.
- H. If hand of door is changed during construction, make necessary changes in hardware at no additional cost.

3.3 ADJUST AND CLEAN

- A. Adjust and check each operating item of hardware and each door, to ensure proper operation or function of every unit. Replace units which cannot be adjusted to operate freely and smoothly as intended for the application made.
- B. Clean adjacent surface soiled by hardware installation.
- C. Final Adjustment: Wherever hardware installation is made more than one month prior to acceptance or occupancy of a space or area, return to the work during the week prior to acceptance or occupancy, and make final check and

adjustment of all hardware items in such space or area. Clean operating items as necessary to restore proper function and finish of hardware and doors. Adjust door control devices to compensate for final operation of heating and ventilating equipment.

- D. Instruct Owner's Personnel in proper adjustment and maintenance of hardware finishes, during the final adjustment of hardware.
- E. Continued Maintenance Service: Approximately six months after the completion of the project, the Contractor accompanied by the Architectural Hardware Consultant, shall return to the project and re-adjust every item of hardware to restore proper functions of doors and hardware. Consult with and instruct Owner's personnel in recommended additions to the maintenance procedures. Replace hardware items which have deteriorated or failed due to faulty design, materials or installation of hardware units. Prepare a written report of current and predictable problems (of substantial nature) in the performance of the hardware.

3.4 HARDWARE LOCATIONS

- A. Conform to CCR, Title 24, Part 2, and ADAAG for positioning requirements for the handicapped.

3.5 FIELD QUALITY CONTROL

- A. Architectural Hardware Consultant (AHC) to inspect installation and certify hardware and its installation have been furnished and installed in accordance with manufacturer's instructions and as specified herein.

3.6 SCHEDULE INFORMATION AND ABBREVIATIONS

- A. The items listed in the following schedule shall conform to the requirements of the foregoing specifications.
- B. The Door Schedule on the Drawings indicates which hardware set is used with each door.
- C. Manufacturer Abbreviations (Mfr.):

1.	IVE	=	Ives	Hinges, Bolts, Dust Proof Strikes, Push, Pulls, Protection Plates & Stops
2.	LCN	=	LCN	Door Closers
3.	NGP	=	National Guard Products	Thresholds, Gasketing & Weatherstrip
4.	PEM	=	Pemko / Assa Abloy	Door Weatherstrips
5.	SCH	=	Schlage Lock Company	Locks, Latches & Cylinders

D. Schlage Lock Functions: Refer to the Below Lock functions:

1. ND10S = Passage Set – No Locking
2. ND85PD = Faculty Toilet Privacy (Single Compartment Toilet Rooms) – Key lock
3. ND91PD = Office Lock (Vandlgard Function) Key Lock
Disengaging Lever
Entrance Lock (Vandlgard Function) Key Lock
Disengaging Lever
4. ND94PD = Classroom Lock (Vandlgard Function) Key Lock
Disengaging Lever
5. ND96PD = Storeroom Lock (Vandlgard Function) Key Lock
Disengaging Lever
Vandlgard at Exterior Door Applications.
6. ND95PD = Classroom Security Lock (Vandlgard Function) Key
Lock in either Lever Locks/Unlocks
7. ND97 = Corridor Lock (Vandlgard) (Some Bathrooms)

3.7 SCHEDULE – EXTERIOR DOORS

A. **Hardware Group #8**: Exterior Single Faculty Toilet Privacy – Non-Rated:

Qty	Unit	Description	Product	Mfr.
1	Each	Continuous Hinge	SL-224HD	IVE
1	Each	Lockset	ND85PD-RHO-626-C	SCH
1	Each	Key System	To match (E) campus system	SCH
1	Each	Closer	P4040XP RW/PA	LCN
1	Each	Kick Plate	8400	IVE
1	Set	Seals	S773	PEM

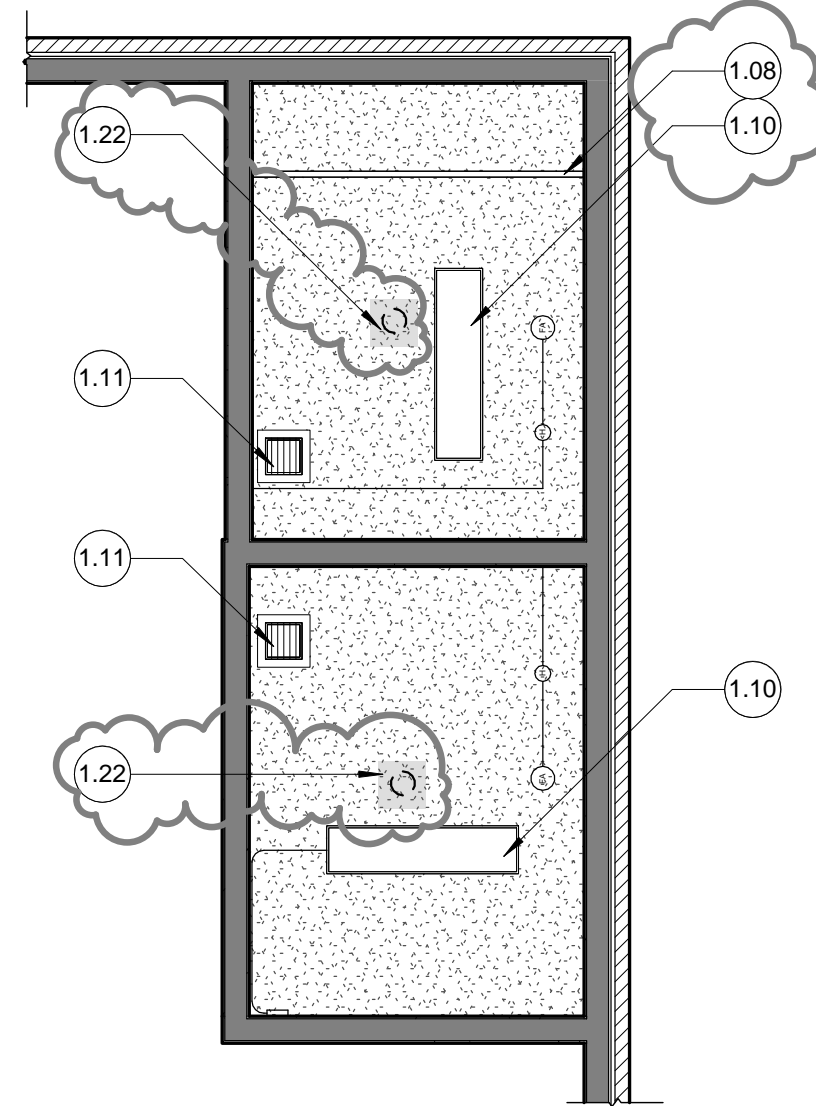
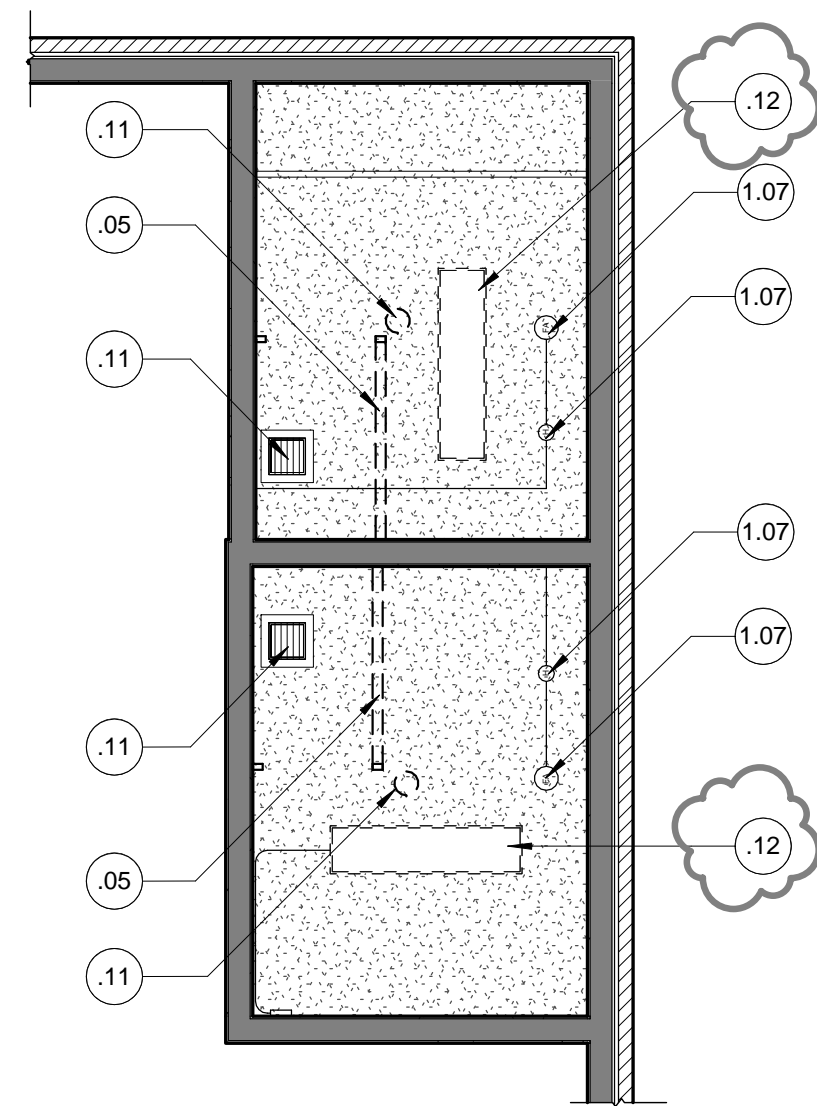
B. **Hardware Group #9**: Exterior – Boy’s and Girl’s Restrooms:

Qty	Unit	Description	Product	Mfr.
1	Each	Threshold	Per Detail	

END OF SECTION 08 71 00 – ADDENDUM # 2.

1 2 3 4 5 6 7 8 9 10 11 12 13 14 15

N
M
L
K
J
H
G
F
E
D
C
B
A



ROOM FINISH SCHEDULE

ROOM #	ROOM NAME	FLOOR FINISH	BASE FINISH	WALLS				CEILING FINISH	CEILING HEIGHT	REMARKS
				NORTH	EAST	SOUTH	WEST			
129	MENS	F2	B2	W2	W2	W2	W2	C2	(E) & 7'-10"	(1), (2), (3)
130	WOMENS	F2	B2	W2	W2	W2	W2	C2	(E) & 8'-2"	(1), (2), (3)

FLOOR	BASE	WALL	CEILING	REMARKS
F1	B1	W1	C1	(E) TO REMAIN
F2	B2	W2	C2	TO REMAIN - EPOXY PAINT
F3	B3	W3	C3	EPOXY-PAINTED GYP BD
				NEW WALLBOARD WITH EPOXY PAINT.
				INTEGRAL COVED EPOXY TO TOP OF (E) CONC. CURB -8"
				FLAKE EPOXY SYSTEM

REMARKS:
 (1) PATCH AND REPAIR ALL SUBSTRATES / SURFACES PRIOR TO APPLYING SCHEDULED FINISHES.
 (2) REMOVE AND REINSTALL, OR TAPE AROUND COMPONENTS TO REMAIN PRIOR TO APPLYING SCHEDULED FINISHES.
 (3) SEE DETAILS D9 AND A9 SHEET A291 FOR EPOXY FLOOR TRANSITIONS AT DOOR THRESHOLD AND WALLS.

GENERAL NOTES

- DIMENSIONS TO CENTERLINE OF STUD WALLS ARE TO THE CENTERLINE OF THE STUD. DIMENSIONS TO THE FACE OF STUD WALLS ARE TO FACE OF STUD OR TO EXTERIOR FACE OF FINISH WHEN INDICATED. FACE OF STUD OCCURS ON THE GRID UNLESS SHOWN OTHERWISE. DIMENSIONS TO ROOF OVERHANGS WILL BE TO EXTERIOR FACE OF STUD AT THE END OF THE OVERHANG.
- FIELD VERIFY ALL DIMENSIONS TO EXISTING CONDITIONS - NOTIFY ARCHITECT OF DISCREPANCIES PRIOR TO ANY WORK IN THAT AREA. DIMENSIONS TO FRAMES WILL BE TO OUTSIDE EDGE OF FRAME IN MASONRY AND STUD WALLS FOR WINDOWS ONLY. DIMENSIONS TO DOOR FRAMES WILL BE TO OUTSIDE EDGE OF FRAME IN MASONRY WALL, AND TO THE CENTERLINE OF FRAME OPENING IN STUD WALLS.
- CHANGES IN FLOOR MATERIAL SHALL OCCUR AT THE CENTERLINE OF THE DOOR PANEL (BELOW THE DOOR IN CLOSED POSITION) U.N.O.
- FOR CONSTRUCTION OF WALLS AT RECESSED CABINETS (I.E.: FEC, ELECTRICAL PANELS, ETC.) SEE DETAIL B10/A-541.
- ALL DOORS TO PROVIDE 18" MIN. CLEAR ON PULL SIDE (INTERIOR DOORS) AND 24" MIN. CLEAR ON EXTERIOR DOORS, AND 12" MIN. CLEAR ON PUSH SIDE OF ACCESSIBLE DOORS WITH CLOSERS AND LATCHES. SEE ACCESSIBILITY DETAILS. REFER TO DOOR SCHEDULE FOR APPLICABLE HARDWARE.
- COORDINATE ALL OPENING SIZES AND HEAD HEIGHTS WITH SCHEDULES.
- CONCRETE SLABS SLOPE TO DRAIN, TYP. 2% MAX. CROSS-SLOPE WHERE LOCATED WITHIN ACCESSIBLE ROUTE.
- BATT (SOUND) INSULATION SHALL BE INSTALLED TO FILL ALL FRAMED WALL CAVITIES, WITHIN ALL WALLS AROUND ALL TOILET ROOMS, WITHIN ALL WALLS AROUND OFFICES, WITHIN ALL WALLS AROUND CLASSROOMS, AND AROUND ROOMS WITH NOISE-PRODUCING EQUIPMENT.
- SHADED PLUMBING FIXTURES SHOWN IN PLAN SHALL BE BARRIER-FREE ACCESSIBLE FIXTURES AS PER CODE. REFER TO TYPICAL MOUNTING DIMENSIONS AND CLEAR FLOOR REQUIREMENTS ON SHEET A591. PROVIDE BLOCKING AS REQUIRED. IF REQUIRED AT (E) WALLS, CONTRACTOR TO COORDINATE REMOVAL AND REPLACEMENT OF GYP. BD., OR OTHER COMPONENTS WITHIN (E) WALL ASSEMBLY.
- SEE SHEET A571 FOR DOOR SCHEDULE AND DETAILS.
- SEE SHEET A571 FOR WALL TYPE DETAILS.



CALIFORNIA DESIGN WEST ARCHITECTS, Inc.
 2100 19th Street
 Sacramento, CA 95818
 Phone: (916) 446-2466
 Fax: (916) 446-5118
 Web Page: ca-dw.com

These plans and prints thereof, as instruments of service, are owned by the architect and are for the use on this project only. Reproduction and/or distribution without the prior written consent of the architect is forbidden.
 Copyright California Design West Architects, Inc.

ARCHITECT: _____ CONSULTANT: _____



CONSULTANT: _____

PROJECT NAME:
PHOEBE HEARST ELEMENTARY SCHOOL

1410 60th St, SACRAMENTO CA

TOILET ROOM REMODEL

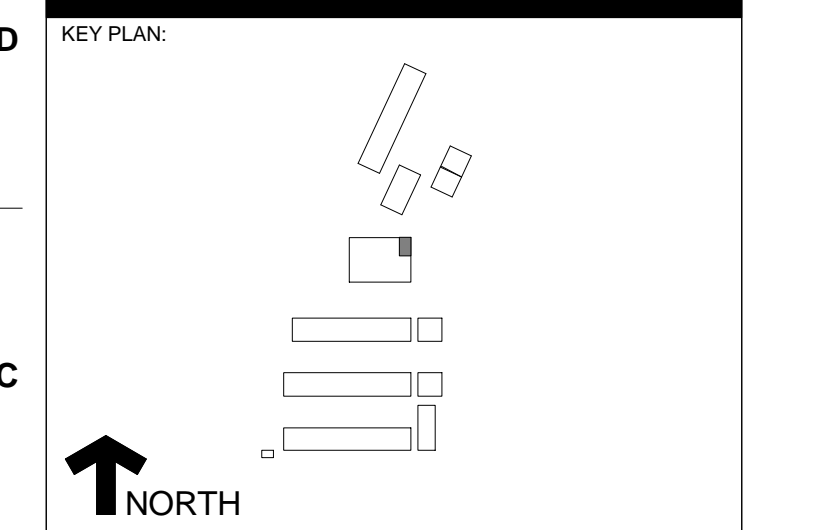
SACRAMENTO CITY UNIFIED SCHOOL DISTRICT

5735 47th Avenue
 Sacramento, CA 95819

SACRAMENTO COUNTY

FILE NO.: 34-53

IDENTIFICATION STAMP
 DIVISION OF THE STATE ARCHITECT
 APPL. 02-114149
 AC _____ FLS _____ SS _____
 DATE _____

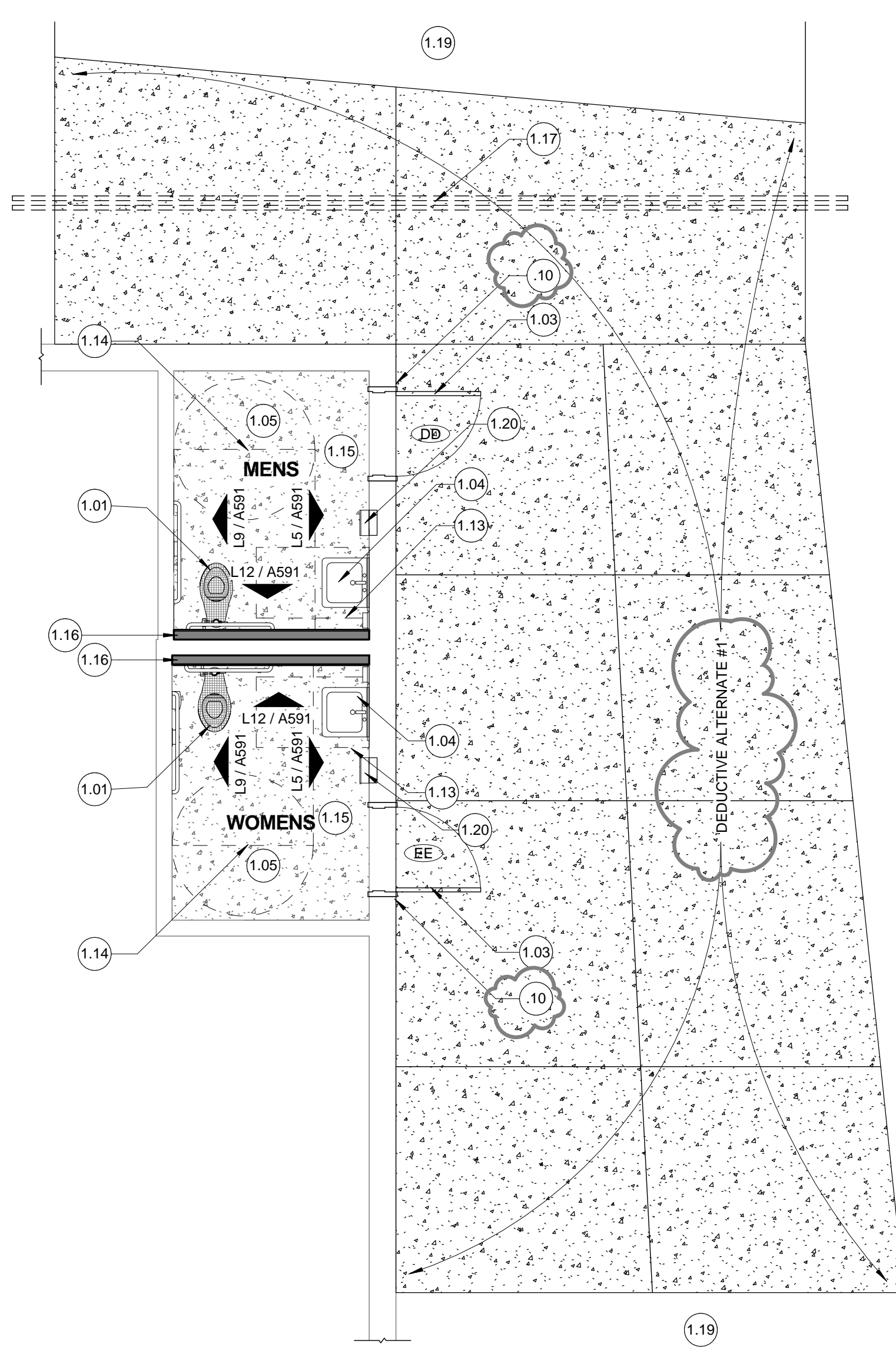
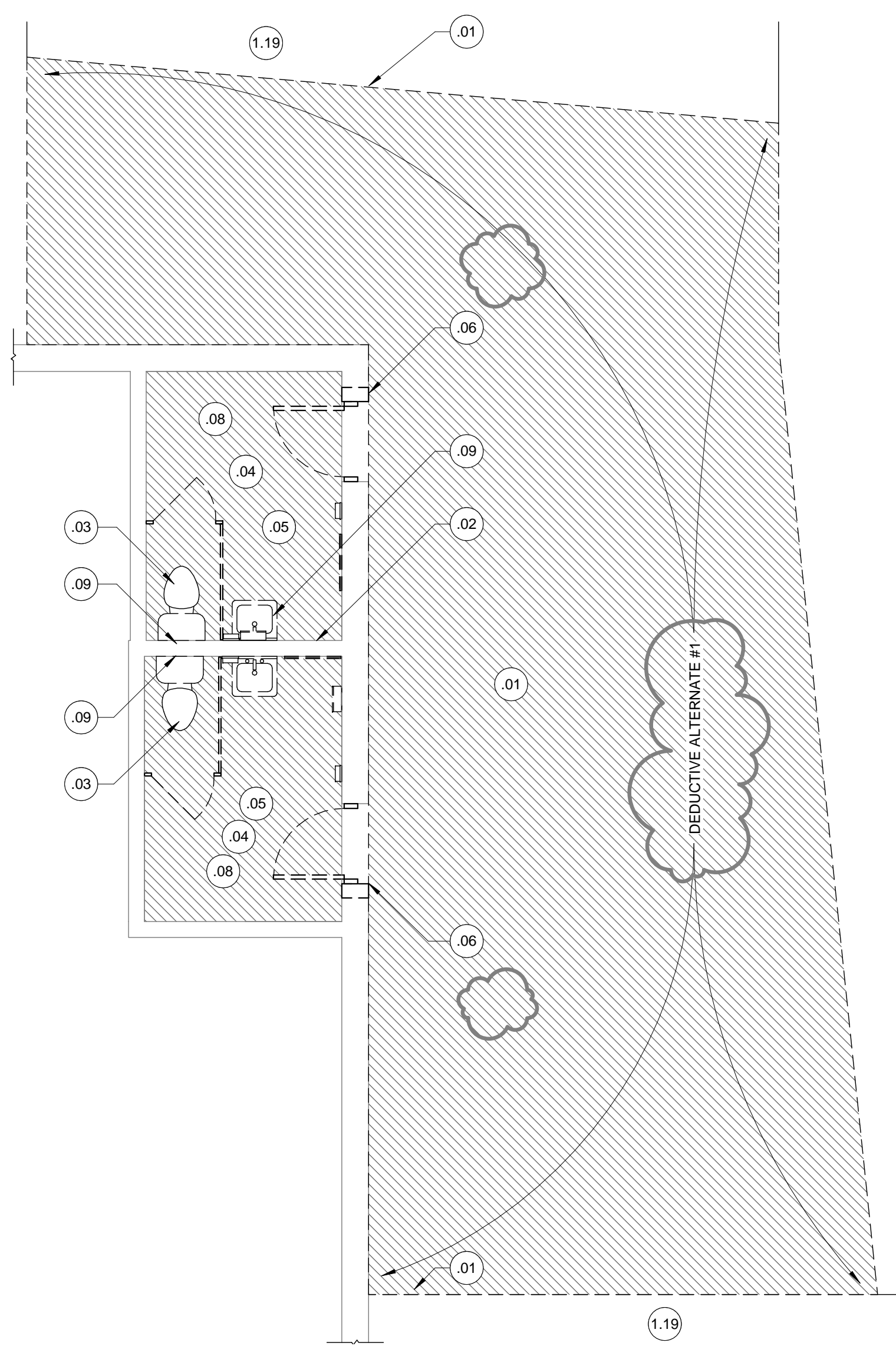


SHEET TITLE:
PARTIAL FLOOR PLANS

JOB NUMBER: _____ SHEET NUMBER: _____
 DATE: 25 JUNE, 2017
 DRAWN BY: SJT
ADD-2 CCD-1 A101

3 DEMO R.C.P.
 1/4" = 1'-0"

4 NEW R.C.P.
 1/4" = 1'-0"



1 DEMOLITION PLAN
 1/4" = 1'-0"

2 TOILET ROOM - NEW PLAN
 1/4" = 1'-0"

LEGEND

- (E) WALLS, FIXTURES, AND COMPONENTS TO REMAIN.
- WALLS, FIXTURES, AND COMPONENTS TO BE DEMOLISHED.
- NEW FIXTURES, FINISHED, AND COMPONENTS.
- NEW WOOD STUD FRAMED WALL. REFER TO WALL TYPES.
- KEYED NOTES. REFER TO KEYED NOTES SCHEDULE. KEYED NOTE TAGS W/O LEADER APPLIES TO ENTIRE ROOM OR SURFACE IN(ON) WHICH THE TAG IS LOCATED.
- 101 DOOR TAG/NUMBER. REFER TO DOOR SCHEDULE ON A571.
- 11 WALL TYPE AS INDICATED. REFER TO WALL TYPE DETAILS ON A571.
- APPROXIMATE AREA AND LOCATION OF SAW CUT AND REMOVAL OF SLAB ON GRADE.
- APPROXIMATE LOCATION AND AREA OF CONCRETE SLAB ON GRADE TO BE REPAIRED / REPLACED. CONTRACTOR TO ENSURE EDGES ARE FLUSH WITH ADJACENT (E) CONCRETE. PROVIDE #3 REBAR @ 24" O.C. EACH WAY, EPOXIED 3" INTO EXISTING ADJACENT CONCRETE. DEDUCTIVE ALTERNATE #1: EXTERIOR WALKWAY / SLAB ON GRADE TO REMAIN, IF INTERIOR FLOOR AND PLUMBING CAN BE LOWERED TO MATCH HEIGHT.

KEYED NOTES

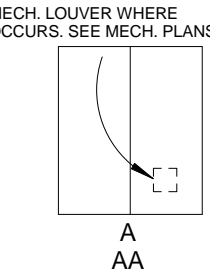
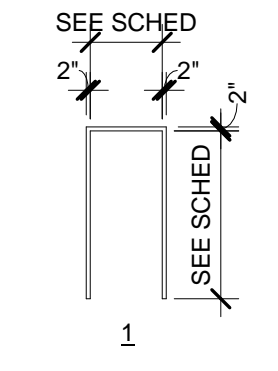
- SAW-CUT AND DEMO EXISTING CONCRETE SLAB ON GRADE (DEDUCTIVE ALTERNATE #1 - SLAB TO REMAIN, IF INTERIOR FLOOR CAN BE LOWERED TO MATCH ELEVATION).
- REMOVE (E) WATER AND SEWER. CAP WITHIN WALL CAVITY AND BELOW CONC. SLAB ON GRADE.
- DEMOLISH (E) TOILET AND LAVATORY.
- REMOVE ELECTRICAL COVER PLATES, BRACKETS, FIXTURES, ETC. FOR PAINT. SLAVAGE AND REINSTALL AFTER PAINT IS FULLY DRY.
- DEMOLISH (E) TOILET PARTITIONS AND TOILET ACCESSORIES.
- SAW-CUT AND REMOVE BRICK AND FOUNDATION BELOW AT MORTAR JOINT TO PROVIDE 3'-4" OPENING FOR NEW DOORWAY. CLEAN RESIDUAL MORTAR AND REPOINT NEW MORTAR AS NECESSARY. ADJUST WALL FRAMING TO RECEIVE NEW DOOR. USE CAUTION TO NOT DAMAGE EDGE OF (E) ADJACENT BRICK TO REMAIN. IF JOINT BRICK CANNOT BE SEALED TO HM FRAME ON BOTH SIDES, PROVIDE PLASTER INFILL CLOSURE BETWEEN BRICK AND HM FRAME.
- SAW CUT (AS REQUIRED) AND DEMOLISH CONC. FLOOR. DEMO CONCRETE THRESHOLD DOWN 4" BELOW EXISTING EXTERIOR CONCRETE SLAB. LOWER FLOOR SS FLANGE AND NEW TOILET ROOM FLOOR TO MATCH EXISTING EXTERIOR SLAB GRADE IF POSSIBLE. (DEDUCTIVE ALTERNATE #1).
- MODIFY PLUMBING FOR NEW WC AND LAVATORY LOCATIONS. COORDINATE WITH MECH.
- PROVIDE PLASTER VENEER INFILL CLOSURE / TRIM BETWEEN BRICK AND HM FRAME WHERE REQUIRED. SEAL TO CUT BRICK VENEER AND NEW HM FRAME.
- DISCONNECT AND DEMO (E) EXHAUST FAN. PROTECT (E) DEDICATED POWER CIRCUIT(S) FOR REUSE.
- REMOVE AND DEMO (E) LIGHT FIXTURE. PROTECT (E) CIRCUIT FOR REUSE.
- SHIFT SS FOR NEW TOILET LOCATIONS AS REQUIRED PRIOR TO REPLACEMENT OF CONCRETE FLOOR.
- NEW DOOR. ADJUST AND ENLARGE FRAMING AS NECESSARY (MATCH (E) FRAMING SIZES). PROVIDE NEW DOOR SIGNAGE PER A13/A591. REFER TO DOOR SCHEDULE.
- PROVIDE NEW LAVATORY. PROVIDE NEW BLOCKING AND MOUNTING HARDWARE AS REQUIRED. WASTE MAY BE RUN EXPOSED TO ADJACENT SIDE WALL (MAINTAIN ACCESSIBLE CLEARANCES). PROVIDE NEW FAUCET, STOPS, AND PIPING (WITH REQUIRED PROTECTION BELOW LAVATORY). CONNECT TO (E) VTR. REFER TO DETAIL L5/A591. PROVIDE NEW MIRROR PER SPECS.
- NEW CONCRETE SLAB - SLOPE TO DOORWAY @ 1.5% TO 1.8% (2% MAXIMUM).
- PROTECT EXISTING FIRE ALARM DEVICES TO REMAIN.
- (E) CONDUIT TO REMAIN. PAINT.
- REPLACE (E) LIGHT FIXTURE WITH NEW SURFACE-MOUNTED LED LIGHT-FIXTURE(S) WHERE INDICATED.
- PROVIDE NEW EXHAUST FAN TO EXISTING DUCTWORK (GREENHECK MODEL SP-A200) AND EXHAUST GRILLE. PROVIDE THERMAL OVERLOAD PROTECTED MOTOR, INTEGRAL BACKDRAFT DAMPER, AND FACTORY SOLID STATE SPEED CONTROLLER. INTERCONNECT FAN TO SWITCH WITH RESTROOM LIGHT BY USE OF RELAY. THE RELAY SHOULD ENERGIZE BY THE EXISTING LIGHTING CIRCUIT. PROVIDE A 15 MINUTE DELAYED OFF FUNCTION.
- 30" x 48" CLEAR FLOOR SPACE. REFER TO DETAIL L5/A591 FOR LAVATORIES.
- 60" x 60" CLEAR FLOOR SPACE.
- ALL TOILET ROOM SOAP AND TOILET TISSUE DISPENSERS PROVIDED BY DISTRICT, CONTRACTOR TO INSTALL.
- FULL-HEIGHT FURRED PLUMBING CHASE WITH C.I.P CONCRETE CURB. REFER TO WALL TYPE 1.
- COORDINATE CUTTING, REMOVAL, AND NEW CONCRETE PLACEMENT WITH REQUIRED CONDUIT AND ELECTRICAL WORK FOR FUTURE PORTABLE. PROVIDE (2) 2" CONDUITS, STUB 16" BEYOND NEW CONCRETE SLAB AND CAP. (THIS WORK TO BE INCLUDED IN DEDUCTIVE ALTERNATE #1)
- (E) CONCRETE SLAB TO REMAIN
- PROVIDE NEW RECESSED HAND DRYER XCEL BRUSHED STAINLESS STEEL WITH OPTIONAL RECESS-KIT AND NOISE REDUCTION NOSSLE. ADJUST FRAMING AS REQUIRED. CONNECT NEW HAND DRYER TO SALVAGED FAN CIRCUIT (NOTE 11). ENSURE THAT HAND DRYER POWER CIRCUIT IS NOT AFFECTED BY NEW FAN SWITCHING.
- PATCH AND REPAIR GYP BD WHERE ABANDONED FAN WAS DEMOLISHED.

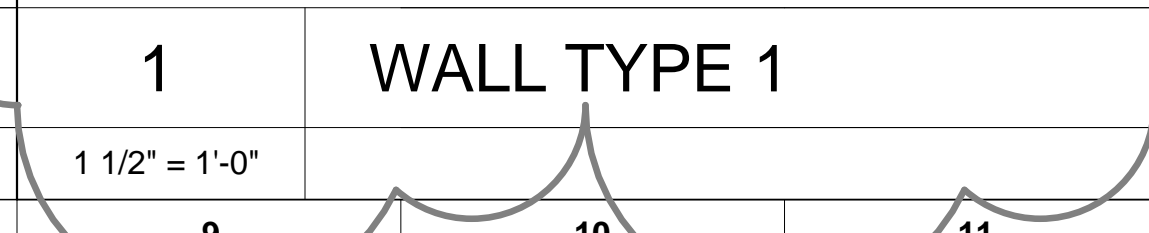
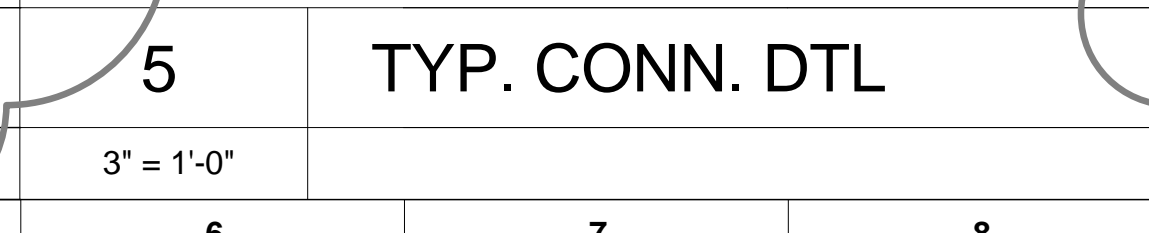
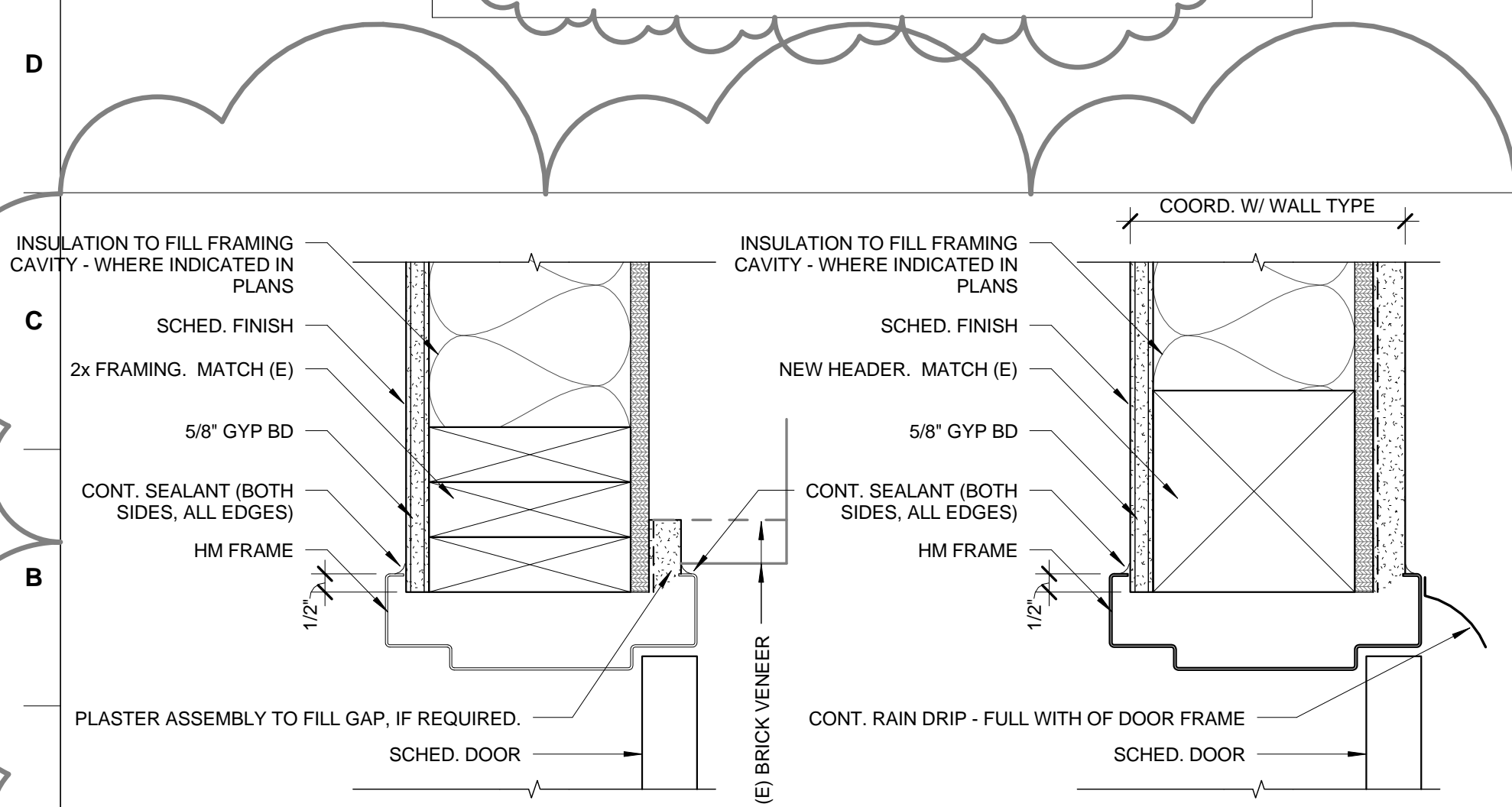
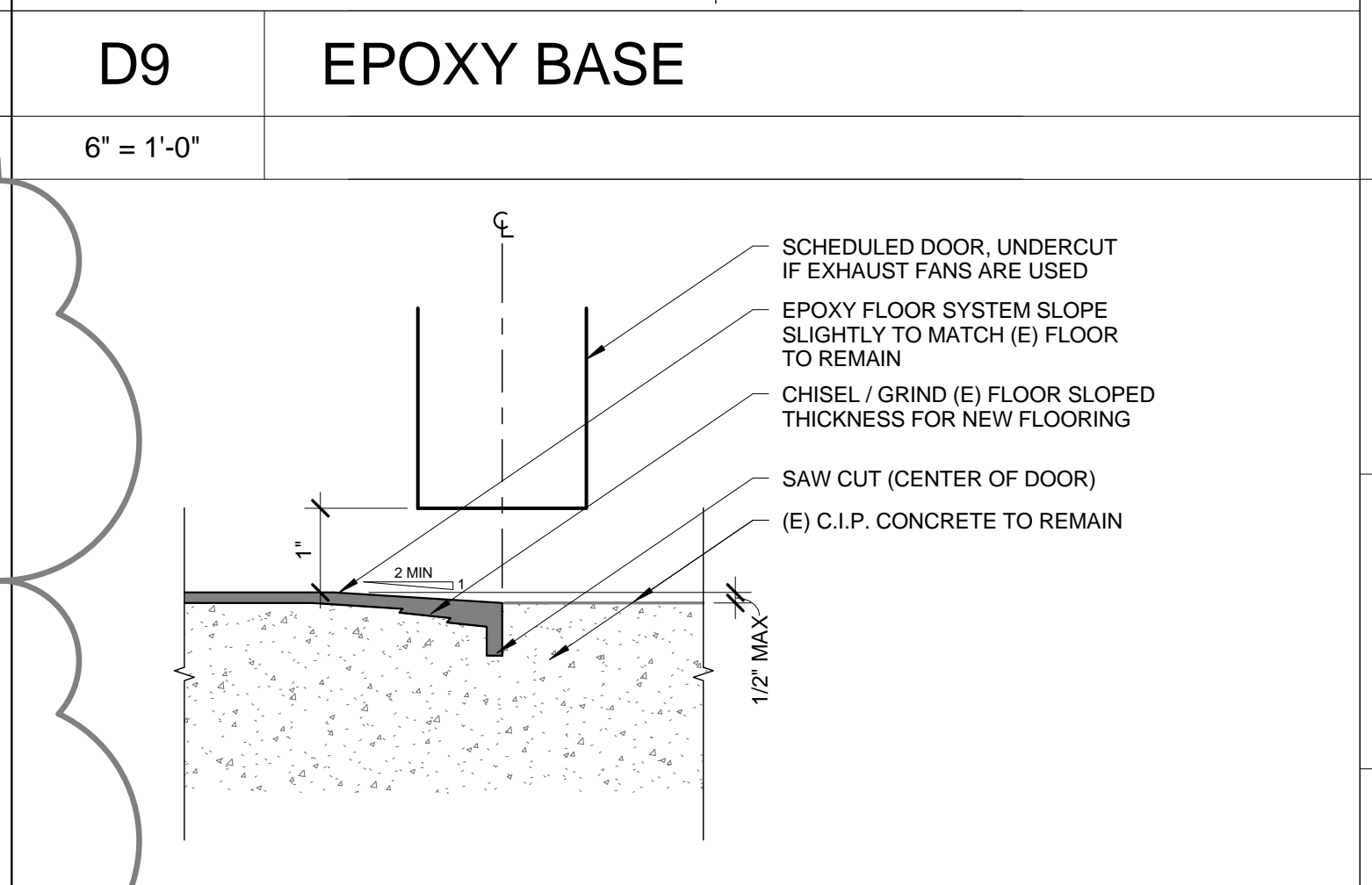
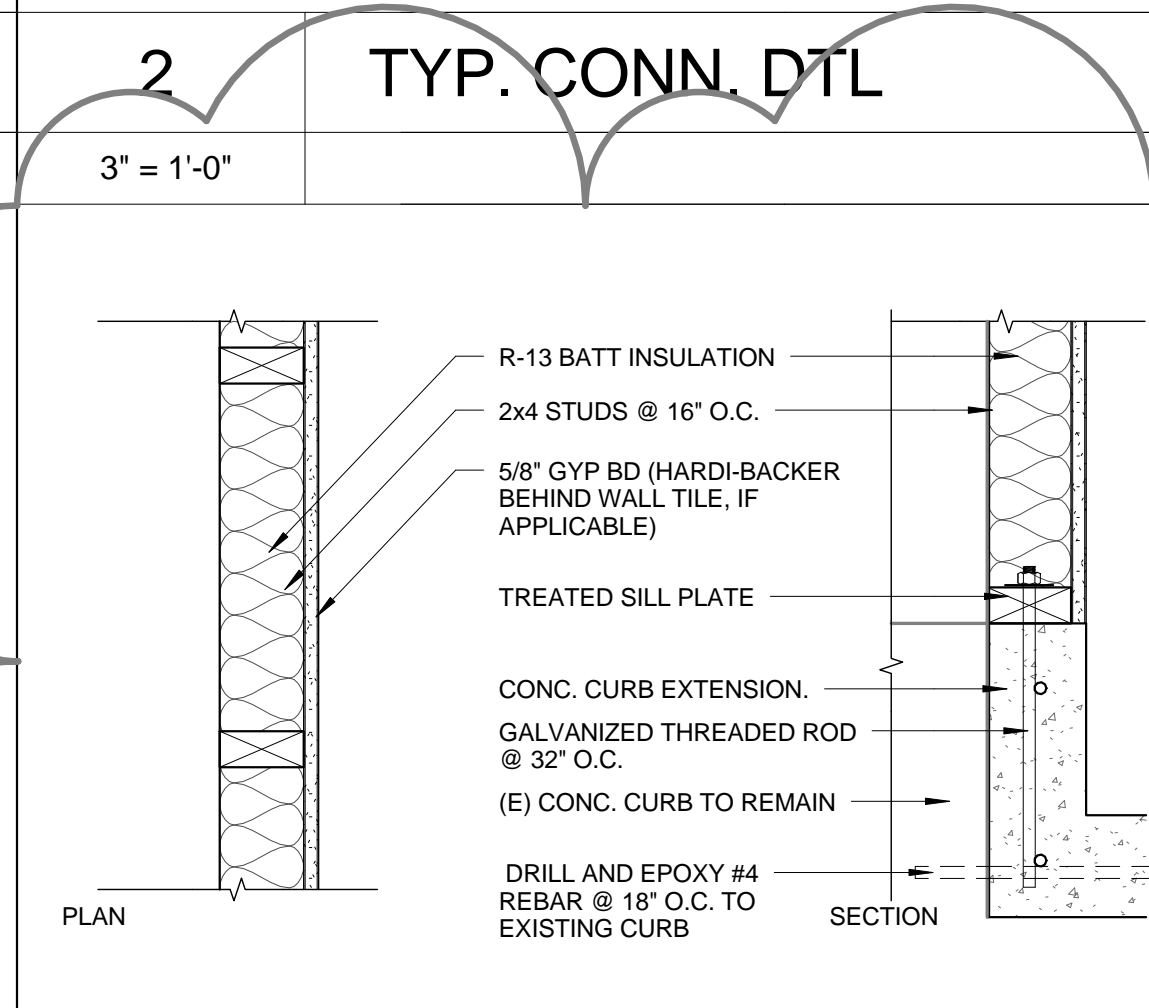
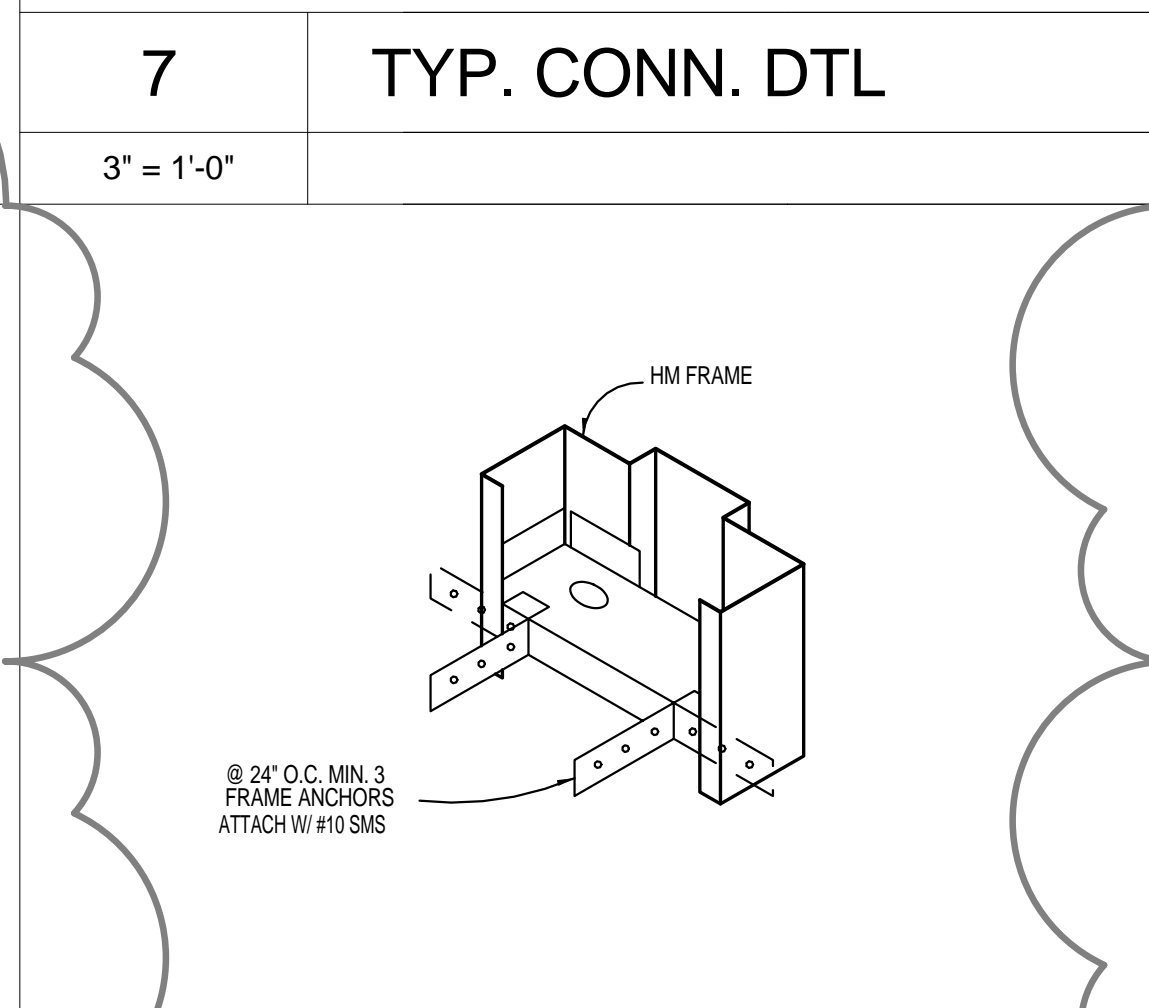
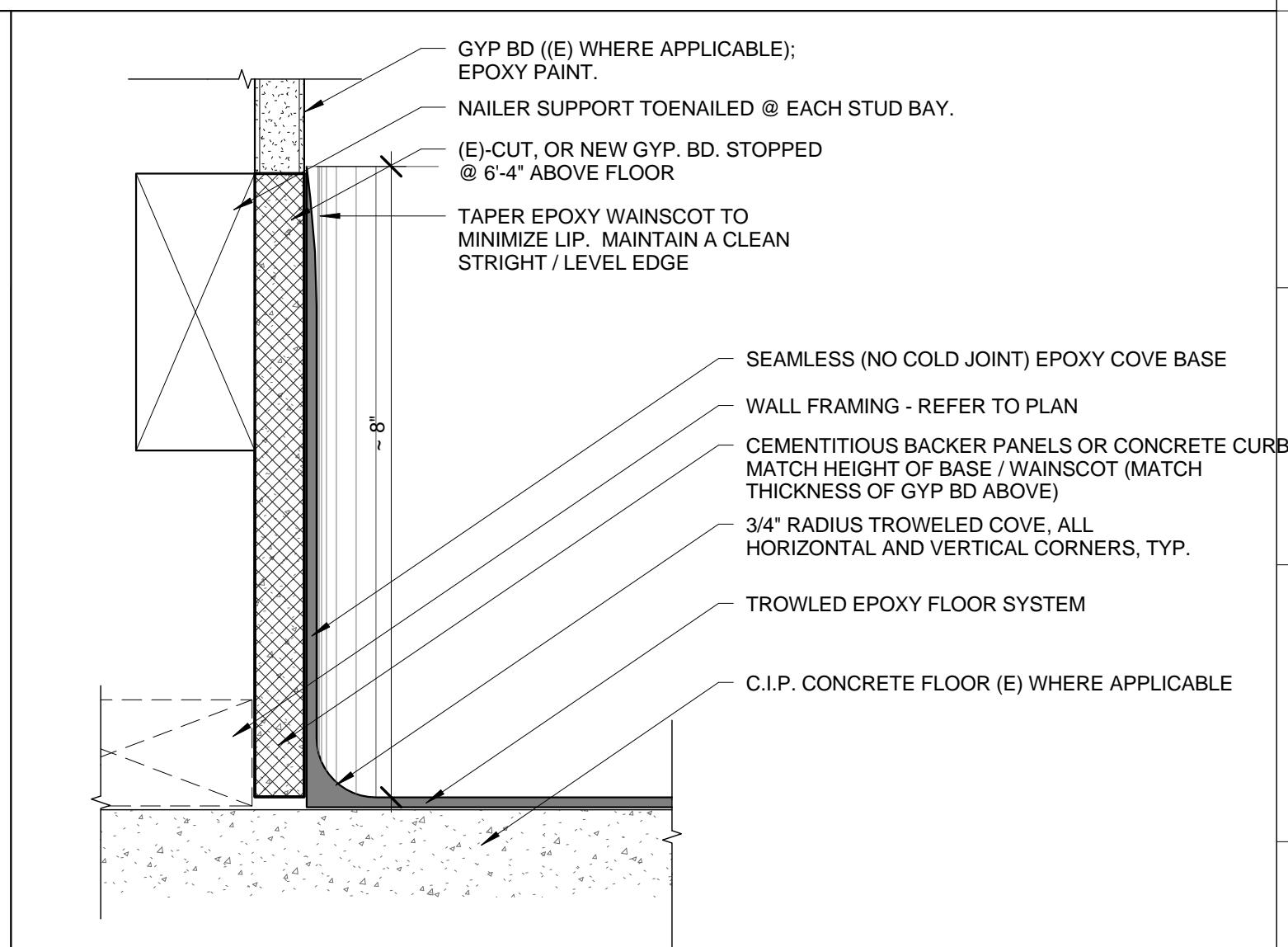
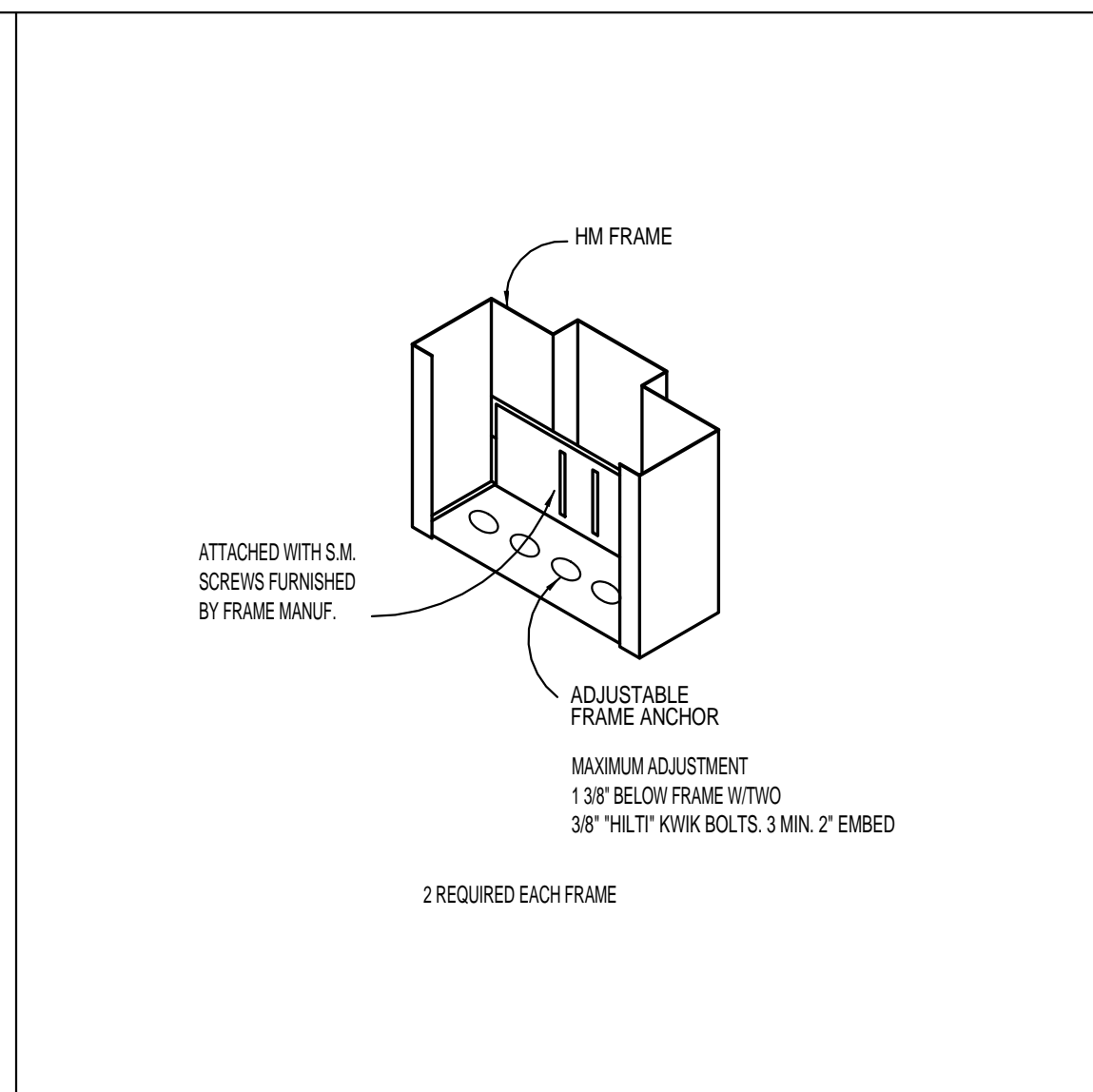
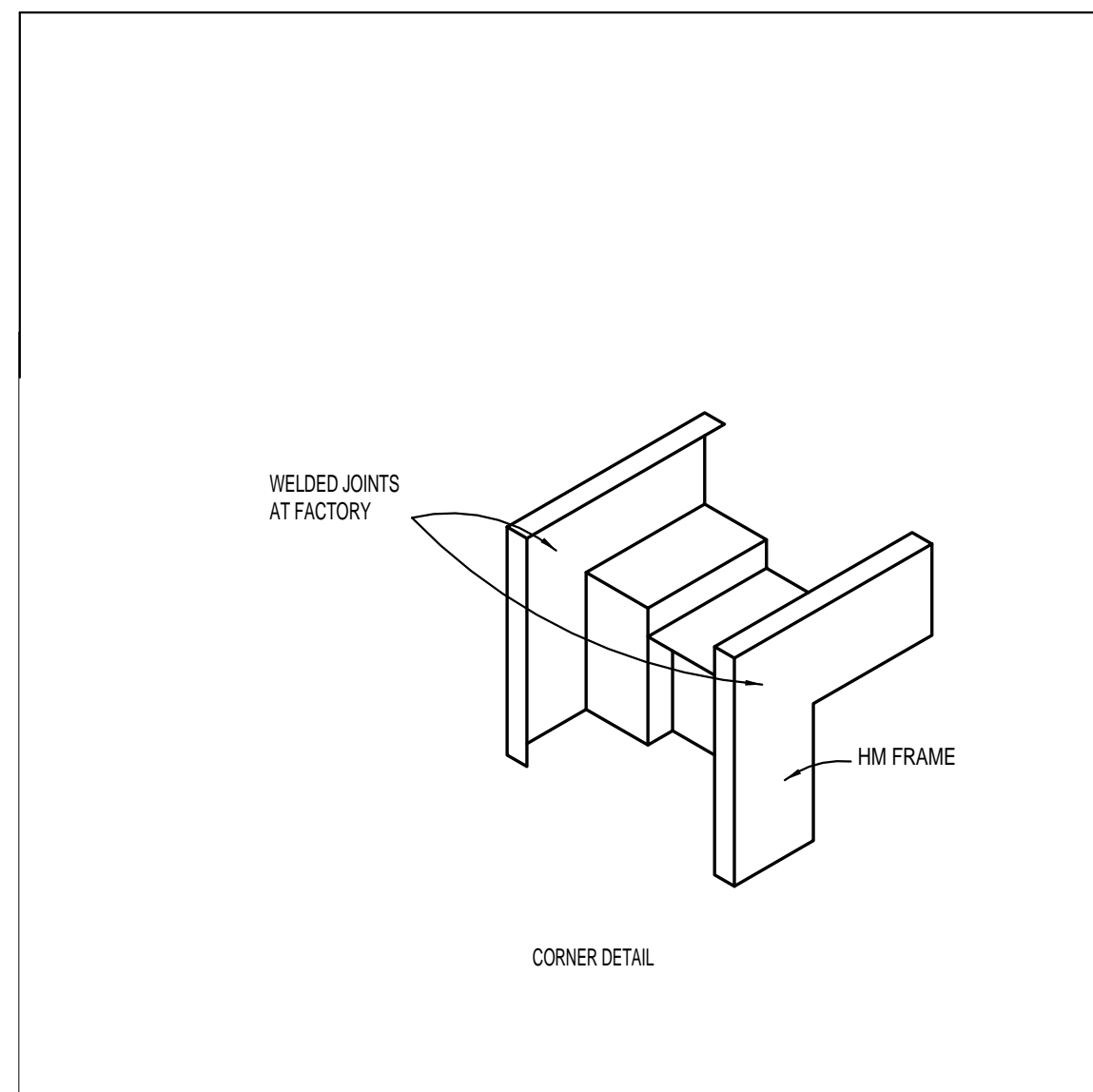
C:\Users\ericson\Documents\14_Phoebek Hearst\ToiletRoom_remodel\RTK\3.rvt

DOOR SCHEDULE

DOOR #	DOOR LEAF SIZE		DOOR				FRAME		9. DETAILS			10. HARDWARE	11. REMARKS	DOOR #	
	WIDTH	HEIGHT	2. DOOR TYPE	3. THICKNESS	4. CONST. / FINISH	5. GLASS	6. FIRE RATING	7. FRAME TYPE	8. FRAME FINISH	HEAD	JAMB				SILL
DD	3'-0"	7'-0"	A	0'-1 3/4"	HMIP	-	-	1	PT	6/A571	6/A571	A9/A571	8	(1), (2)	DD
EE	3'-0"	7'-0"	A	0'-1 3/4"	HMIP	-	-	1	PT	6/A571	6/A571	A9/A571	8	(1), (2)	EE

DOOR SCHEDULE INFO

- IF (-) IS IN SLOT THERE ARE NO ITEMS APPLICABLE
- DOOR TYPES:**
MECH. LOUVER WHERE OCCURS; SEE MECH. PLANS

- THICKNESS:**
THICKNESS INDICATES ITS NOMINAL SIZE
- CONSTRUCTION / FINISH:**
SCT = SOLID CORE TRANSPARENT FINISH
SCL = SOLID CORE, PLASTIC LAMINATE FINISH
AL = ALUMINUM WITH GLASS
HM = HOLLOW METAL, PAINTED
HMIP = HOLLOW METAL, INSULATED, PAINTED
STIP = STEEL, INSULATED, POWDER-COAT PAINTED
* = SPECIAL (REFER TO SPECIFICATIONS)
- GLASS:**
SG = SAFETY GLASS (TEMPERED OR LAMINATED)
SGI = SAFETY GLASS, INSULATED
CW = CLEAR WIRE
SGR = SAFETY GLASS - RATED
- RATING:**
20, 45, 60, ETC INDICATES FIRE RATING IN MINUTES
- FRAME TYPE NUMBER:**

- FRAME FINISH:**
PT = PAINT
PCP = POWDER-COAT PAINTED
* = SPECIAL (REFER TO SPECIFICATIONS)
- DETAIL NUMBER:**
INDICATES DETAIL(S) SHOWN ON SHEET A571
- HARDWARE:**
HARDWARE GROUP #. SEE SPECIFICATIONS FOR HARDWARE GROUPS.
- REMARKS:**
(1) ACCESSIBLE RESTROOM SIGNAGE. REFER TO DETAIL A13/A591.
(2) UNDERCUT DOOR 1" AFF.
(3) COORDINATE FRAME AND DOOR SIZE WITH ACTUAL FINISH OPENING.



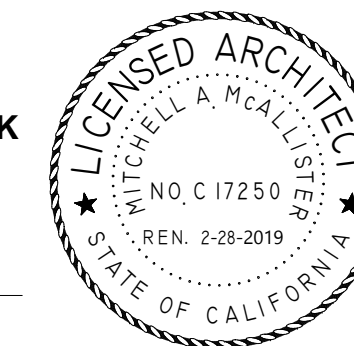
CALIFORNIA DESIGN WEST ARCHITECTS, Inc.

2100 19th Street
Sacramento, CA 95818

Phone: (916) 446-2466
Fax: (916) 446-5118
Web Page: ca-dw.com

These plans and prints, if any, are instruments of service, are owned by the architect and are for the use on this project only. Reproduction and/or distribution without the prior written consent of the architect is forbidden.
Copyright California Design West Architects, Inc.

ARCHITECT: CONSULTANT:



CONSULTANT:

PROJECT NAME:
**PHOEBE HEARST
ELEMENTARY
SCHOOL**

1410 60th St, SACRAMENTO
CA

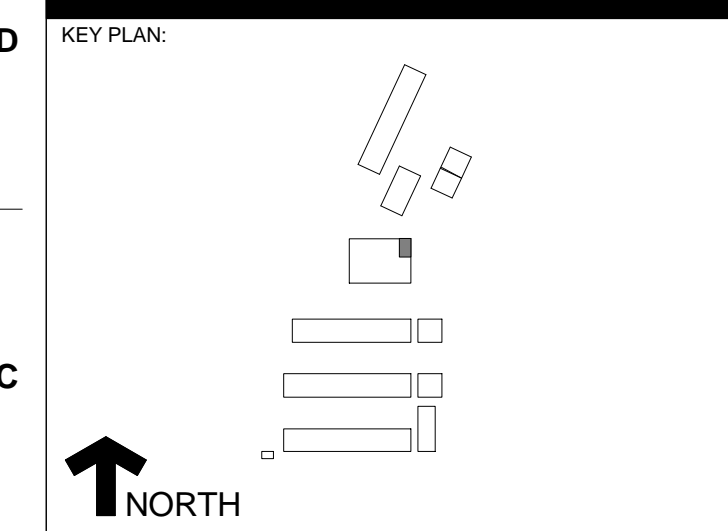
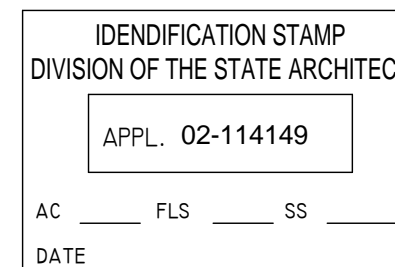
**TOILET ROOM
REMODEL**

SACRAMENTO CITY UNIFIED
SCHOOL DISTRICT

5735 47th Avenue
Sacramento, CA 95819

SACRAMENTO COUNTY

FILE NO.: 34-53



SHEET TITLE: DETAILS	
JOB NUMBER: -	SHEET NUMBER: ADD-2 CCD-1 A571
DATE: 25 JUNE, 2017	
DRAWN BY: SJT	