



Business Services

Contracts Office

5735 47th Avenue • Sacramento, CA 95824

(916) 643-2464

Gerardo Castillo, Chief Business Officer

Kimberly Teague, Contract Specialist

ADDENDUM NO. 1

Date: April 14, 2016

Issued by: Sacramento City Unified School District

Project: **Paving Repairs at Susan B. Anthony ES**

You are hereby notified of the following changes, clarifications, or modifications to the original Contract Documents, Specifications, and Drawings. This Addendum shall supersede the original project documents, and shall take precedence over anything to the contrary therein. All Addenda shall be acknowledged in the Bid Form. Failure to do so may result in disqualification of the bid. All other conditions remain unchanged.

The following is a list of items arising from the pre-bid walk and subsequent bidding questions. All drawing items are clouded and tagged with a Delta #1. There are a total of 20 items included in this addendum.

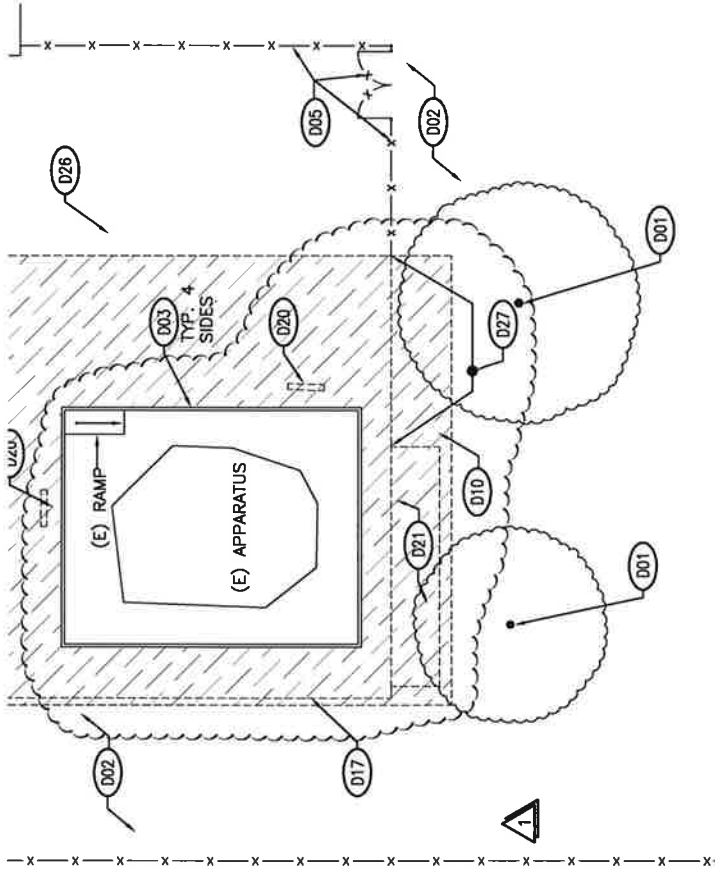
1. Q.: How do I get a copy of the plan holders list and the meeting attendee list?
A.: Bid Walk Sign-In Sheet is posted on our website, <http://www.scusd.edu/construction-projects> and in e-Builder.
2. Q.: Is there a geotechnical report? If so how do we get a copy?
A.: There is not a geotechnical report for this project.
3. Q.: What day would be the most likely start date assuming contracts are fully executed?
A.: June 20th, 2016.
4. Q.: What is the completion date, or how many days do we have to complete the project?
A.: August 26th or 68 days
5. Q.: Due to the 30 day cure time on the AC paving requirement for seal coating, it may not be possible to apply the seal coat before school begins. If schedule does not allow for 30 day cure time can the time of cure be reduced?
A.: The cure time cannot be reduced and will need to be done after school or on the weekend if the project is not completed in time to seal prior to the beginning of school.

6. Q.: See cross hatch pattern on 3D/AD1 that indicates “Grind existing AC as Required...”. Also see Type 1 Paving Area at Hardcourt on sheet C2.1. There are areas shown with full new paving section on C2.1 that are not indicated to be ground/removed on sheet AD1. Which plan governs?
A.: C2.1, the new work plan governs. All demo (means and methods) shall be included in the base bid to accomplish the new work.
7. Q.: See sheet C1.1. In the paving areas that are to remain but receive a minimum 1.5” thick AC overlay, do the design grades allow for 1.5” overlay minimum or will some cold planing be required to achieve this minimum thickness?
A.: The majority of AC requiring an overlay is 1.5” and greater. Some grinding (cold planing) should be anticipated.
8. Q.: See sheet C1.2. Can you confirm the plan scale is 1”=20’?
A.: Yes the scale of the plan is 1”=20’.
9. Q.: On sheet C1.2, see the 2 short runs of storm drain on the northwest portion of the site. Does the squiggly line at the end of the pipe on both runs indicate the location where we are tying into the existing storm drain system?
A.: Those are existing pipes and have been clarified with the addendum drawings.
10. Q.: See specification 32 12 00 2.01E, in what locations will 1/2” maximum gradation AC be used?
A.: 1/2” max will not be used on this project.
11. Contractors are to identify all work associated with the “Apparatus Area” plans 1D/AD1 & 1D/A2 as an additive alternate to the bid.
12. Plan 1D/AD1:
Removal of storage container called out.
Removal of a portion of the chain link fence on the south side called out.
AC paving south of the fence line called out for demo.
13. Plan 3D/AD1:
Extent of AC to be demo’d has been more closely coordinated with the Civil plans.
Contractor is required to provide any and all demolition, grinding, and off-haul necessary to complete the extend of the new work.
14. Demolition Key Notes have been updated for revised scope of work
15. Plan 1D/A2: Storage container called out to be reinstalled after paving.
Chain link fence on the south side is to be reinstalled on new posts after paving. Provide core drilling through new paving for post installation.
AC paving south of the fence line called out to be new. Provide concrete transition curb around paving as shown.
16. Key Notes have been updated for revised scope of work.

17. Sheet C1.1A:
Detail 2/C1.1 added.
Grading Note #4 added.
Plan at Apparatus Area updated
18. Sheet C1.1B:
Concrete flush curb call out around perimeter of paving area.
19. Sheet C1.2A:
Underground piping for storm drainage clarified for new and connections to existing.
20. Sheet C2.1A:
Paving area south of the Apparatus Area included in the Alternate scope of work.
21. Specification Section 01 22 00 – Alternates and Unit Pricing has been added.
New Bid Form (page 24) is attached.

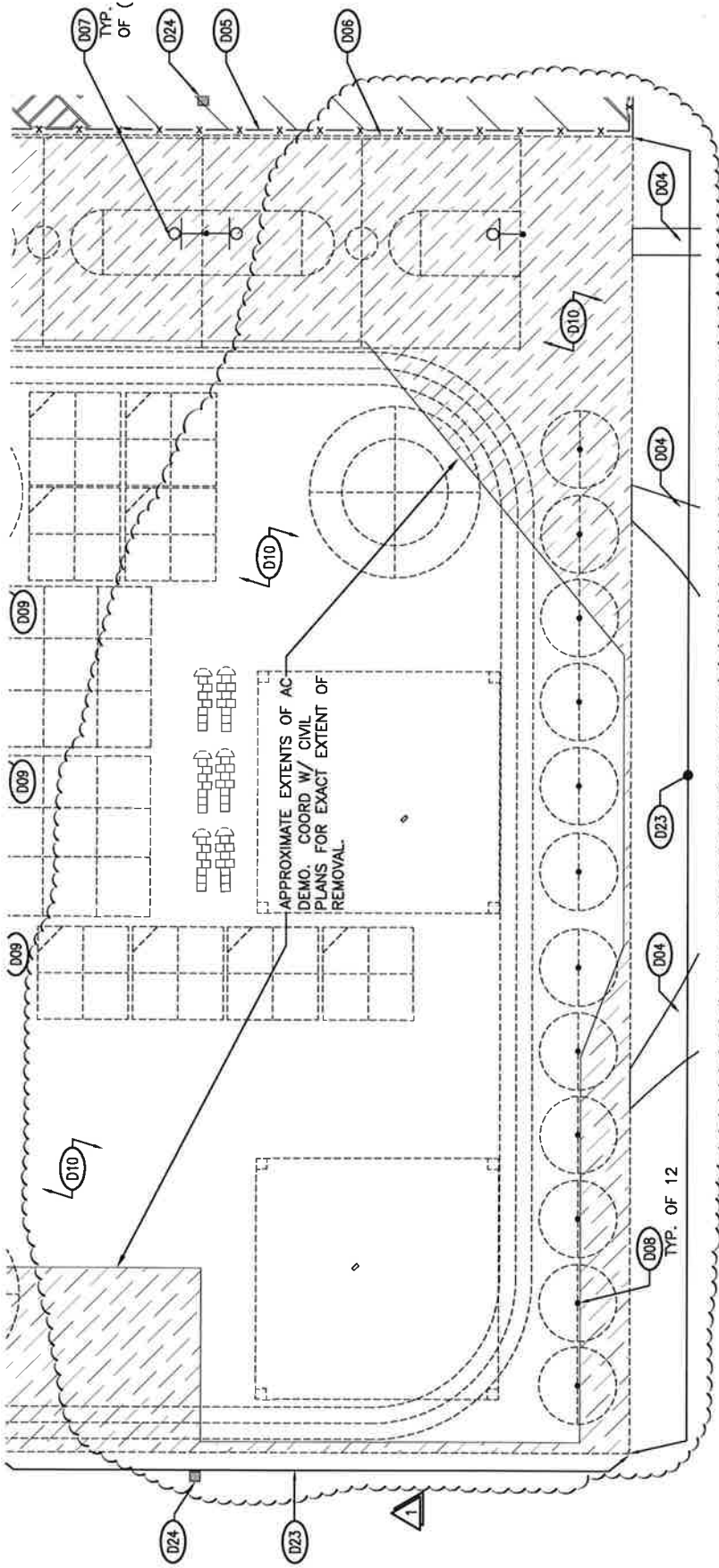
END OF ADDENDUM NO. 1

Attachments



BID NOTES:
 ALL WORK SHOWN THIS PLAN IS TO
 BE PART OF A LINE ITEM FOR
 ADDITIVE ALTERNATE #1 ON THE BID
 FORM.

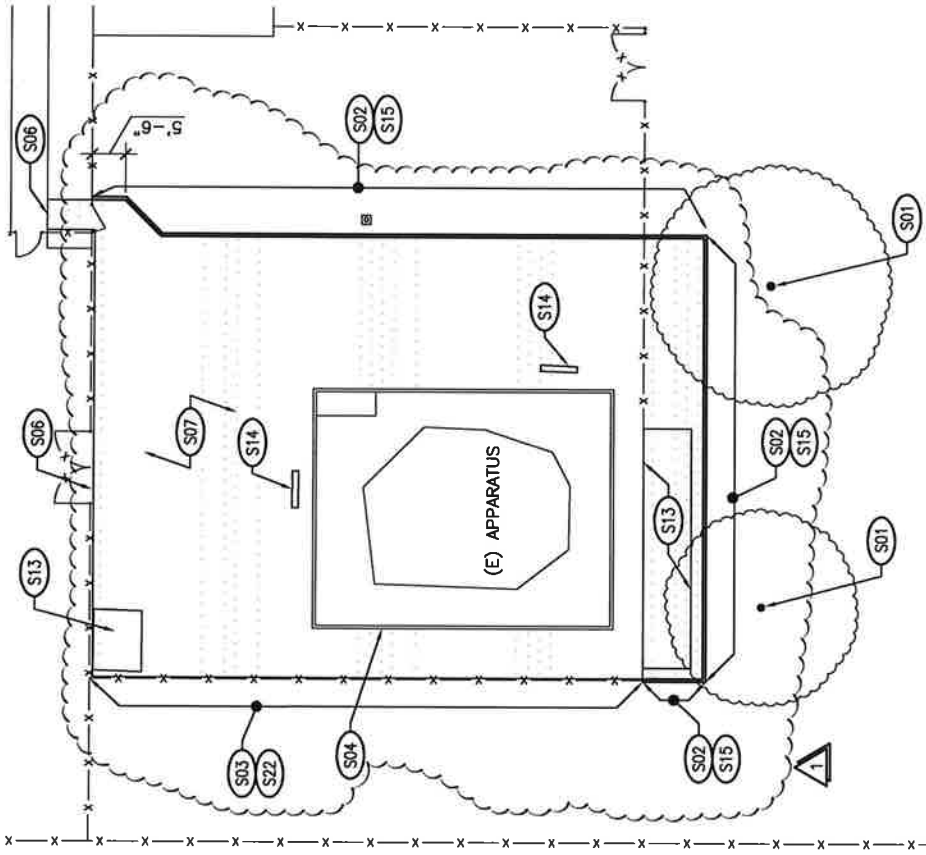




DEMOLITION KEYNOTES:

- (D01) (E) TREES TO REMAIN.
- (D02) (E) LANDSCAPING TO REMAIN.
- (D03) (E) CURB AROUND PLAY AREA TO REMAIN.
- (D04) (E) A.C. OR CONCRETE PAVING TO REMAIN.
- (D05) (E) CHAIN LINK FENCE & GATE (WHERE OCCURS) TO REMAIN.
- (D06) SAWCUT LINE THROUGH PAVING. CUT TO CLEAN STRAIGHT LINE.
- (D07) (E) BASKET BALL HOOP TO REMAIN. PROTECT IN PLACE.
- (D08) REMOVE (E) MTL. TETHER BALL POLE. RETAIN FOR REINSTALLATION, SEE DETAIL 2A/A3.
- (D09) REMOVE (E) MTL. VOLLYBALL POLE. RETAIN FOR REINSTALLATION, SEE DETAIL 2A/A3.
- (D10) DEMO. OR GRIND (E) PAVING FOR (N) WORK, SEE CIVIL PLANS.
- (D11) DEMO BIKE RACK. & FOOTINGS COMPLETELY.
- (D12) (E) DRAIN INLET TO BE MODIFIED SEE CIVIL FOR WORK.
- (D13) (E) CLEANOUT TO BE MODIFIED TO (N) GRADE. SEE CIVIL FOR WORK.
- (D14) (E) SANITARY SEWER CLEANOUT TO BE MODIFIED TO (N) GRADE. SEE CIVIL FOR WORK.
- (D15) (E) WATER VALVE AND/OR HOSE BIB TO REMAIN, PROTECT IN PLACE.
- (D16) (E) MANHOLE TO BE MODIFIED TO (N) GRADE SEE CIVIL FOR WORK.
- (D17) REMOVE (E) C.L.F. FABRIC AND HORIZONTAL TOP RAIL FOR ACCESS TO WORK. PROTECT POSTS IN PLACE.
- (D18) (E) ELECT. RISER, PROTECT IN PLACE.
- (D19) (E) ELECT. BOX TO BE MODIFIED TO (N) GRADE, SEE CIVIL FOR WORK.
- (D20) REMOVE (E) BENCH, DEMO. FOOTING FROM LEGS, STORE FOR REINSTALLATION.
- (D21) REMOVE (E) STORAGE CONTAINER. RETAIN FOR REINSTALLATION.
- (D22) (E) COLUMN AT COVERED WALKWAY, PROTECT IN PLACE.
- (D23) (E) PARK TURF. MODIFY IRRG. FOR INSTALLING (N) CONC. CURB. SEE CIVIL FOR CURB DETAIL. REINSTALL TURF TO MATCH (E) PARK CONDITION.
- (D24) (E) AREA DRAIN TO REMAIN. PROTECT IN PLACE.
- (D25) NOT USED
- (D26) (E) LIGHT POLE TO REMAIN. PROTECT IN PLACE.
- (D27) DEMO C.L.F. COMPLETELY @ AREA OF WORK.







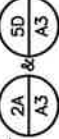




BID NOTES:
 ALL WORK SHOWN THIS PLAN IS TO
 BE PART OF A LINE ITEM FOR
 ADDITIVE ALTERNATE #1 ON THE BID
 FORM.



NORTH
 SCALE: 1"=20'-0"

10
 A2 ENLARGED SITE PLAN - APPARATUS AREA
 FILE: SAC5IT_ENL_P

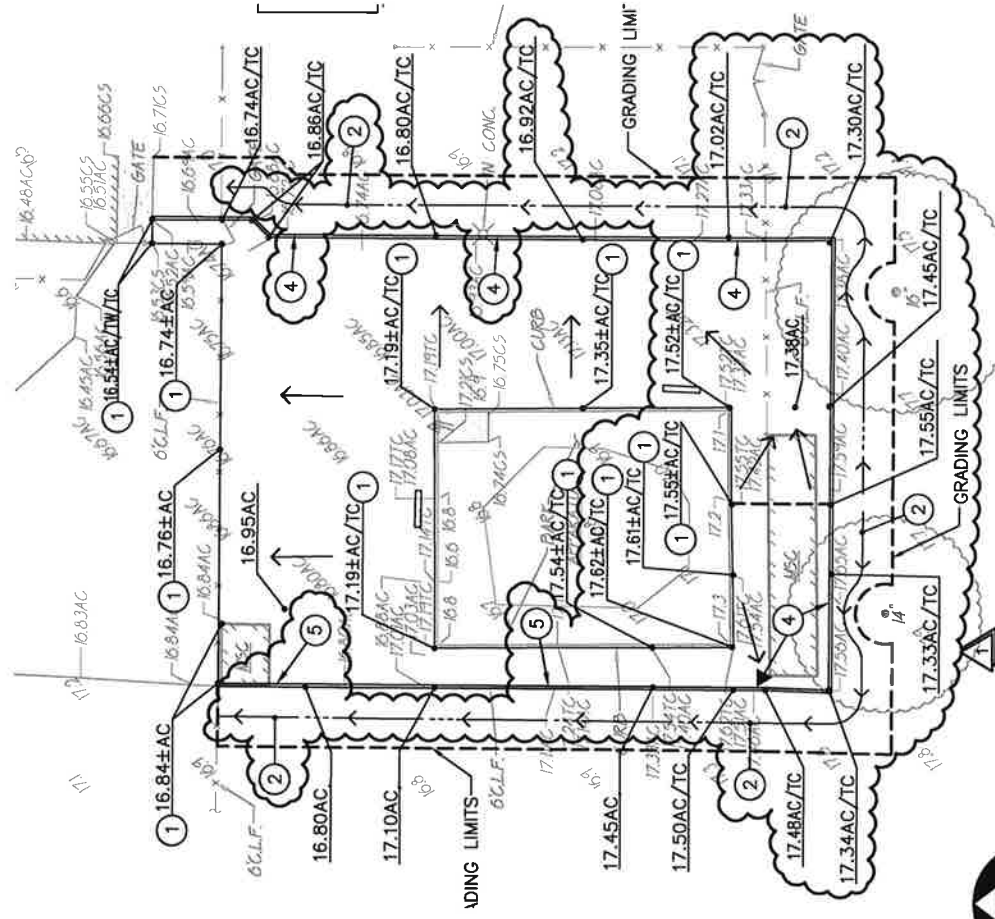
KEYNOTES:

- (S01) (E) TREE TO REMAIN
- (S02) (E) LANDSCAPING. ADJUST IRRIGATION HEADS FOR FULL COVERAGE AND PATCH BACK TURF WITH SOD. SEE ALSO SPEC'S.
- (S03) RE-INSTALL FABRIC AND HORIZONTAL TOP BAR ON (E) POST.
- (S04) (E) CURB AROUND PLAY AREA TO REMAIN
- (S05) (E) BASKETBALL HOOP TO REMAIN
- (S06) A.C. OR CONC. PAVING TO FLUSH WITH (E) CONC. OR A.C. PAVING SEE CIVIL.
- (S07) A.C. PAVING SECTION PER CIVIL PLANS
- (S08) 2" WIDE COURT STRIPING. SEE DETAIL 
- (S09) REINSTALL (E) MTL. POLE FOR VOLLEYBALL IN CONC. FOOTING. SEE DETAIL 
- (S10) REINSTALL (E) TETHER-BALL MTL. POLE IN CONC. FOOTING SEE DETAIL 
- (S11) RESET UTILITY BOX TO FLUSH WITH NEW GRADE. SEE CIVIL
- (S12) 10' BIKE RACK EQ. TO (E), TO SET IN 12" DIA. X 18" DEEP CONC. FOOTING TROWEL SMOOTH TOP OF CONC. FOR DRAINAGE.
- (S13) REINSTALL (E) MTL. STORAGE CONTAINER.
- (S14) REINSTALL (E) BENCH IN CONC. SET BENCH SEAT AT +/- 17" A.F.F.
- (S15) CONC. TRANSITION CURB, SEE CIVIL FOR CURB DETAIL
- (S16) DRAIN INLET, SEE CIVIL PLANS FOR WORK AND PROVIDE (N) ACCESSIBLE COMPLIANT GRATE SET TO (N) ELEVATION.
- (S17) KICKBALL COURT SEE DETAIL 
- (S18) 2" WIDE STRIPING AT HOPSCOTCH, SEE DETAIL 
- (S19) BASKETBALL COURT, SEE DETAIL 
- (S20) (N) CONC. PAVING, SEE CIVIL. CONNECT (N) TO (E) CONC. PAVING PER DETAIL 
- (S21) DRAIN INLET W/ ACC. COMPLIANT GRATE PER CIVIL PLANS.
- (S22) PROVIDE REDWOOD HEADER BD. AGAINST (E) FENCE POSTS FOR EDGE OF PAVING

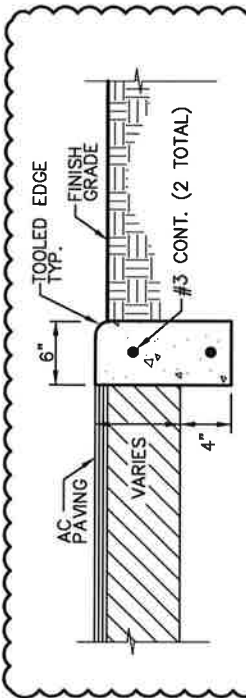
DATE: 04/12/2016
 DRAWN BY: ML
 JOB#: 15-227
 SCALE: AS NOTED
 SACRAMENTO CITY USD

GRADING PLAN
 SUSAN B. ANTHONY E.S.
 7864 DETROIT BLVD.
 SACRAMENTO, CA 95832

15-227 C1.1 A



BID NOTES:
 ALL WORK SHOWN THIS PLAN IS TO
 BE PART OF A LINE ITEM FOR
 ADDITIVE ALTERNATE #1 ON THE BID
 FORM.



- NOTES:
1. PROVIDE FELT EXPANSION JOINTS (E.J.) AT 60 FEET O.C. PROVIDE CONTROL JOINTS AT 10 FEET O.C., EXCEPT WHEN PLACING ADJACENT TO CONCRETE WALKS. THE EXPANSION JOINTS SHALL ALIGN WITH THE EXPANSION JOINTS SHOWN FOR THE CONCRETE WALKS.
 2. AT E.J. USE 1/2"x24" SMOOTH DOWELS, ALIGN WITH REBAR/GREASE 1/2 THE LENGTH BEFORE CONCRETE PLACEMENT.

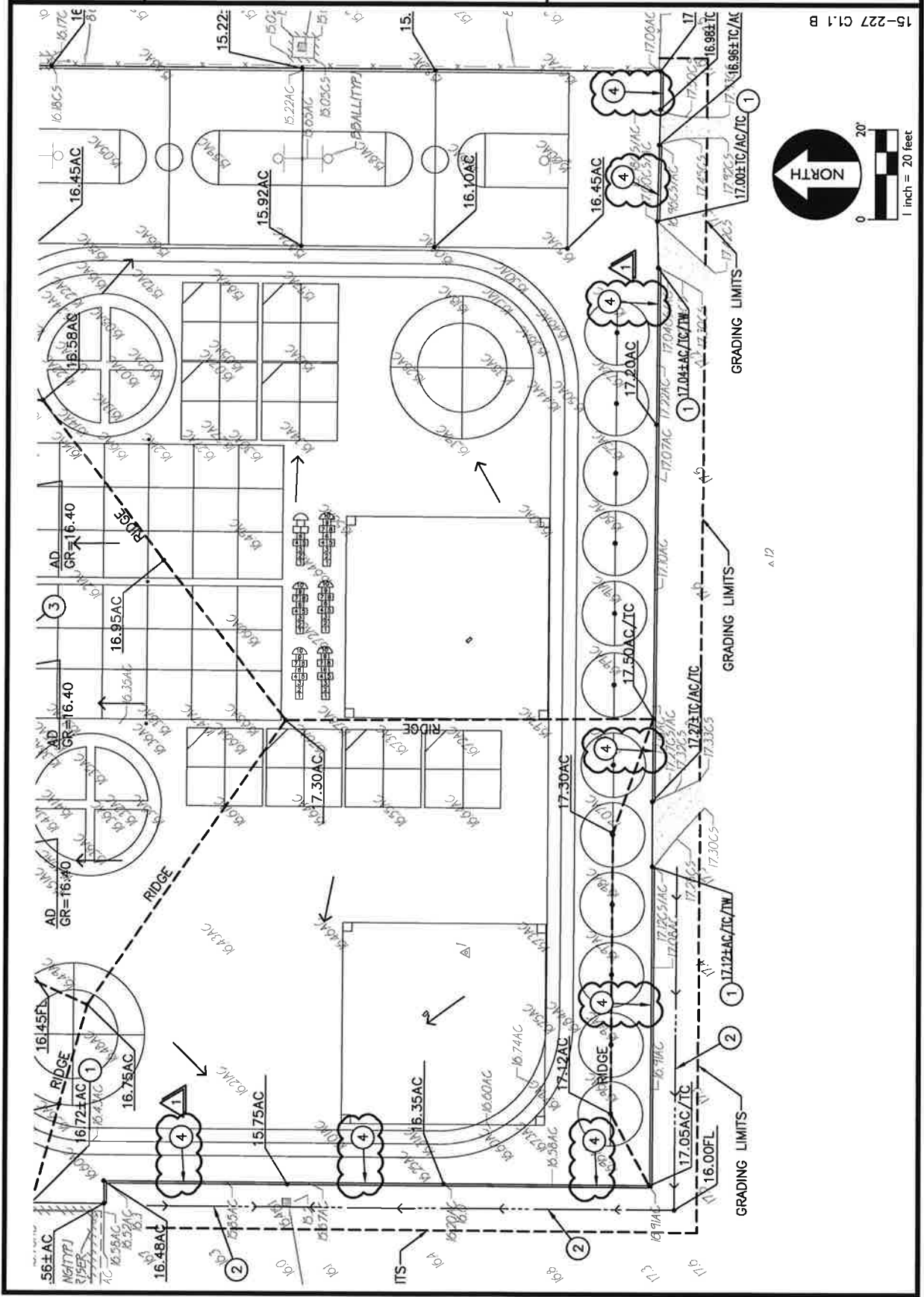
2 FLUSH CONCRETE CURB
 C1.1 NO SCALE

GRADING NOTES

1. MATCH EXISTING GRADE/ELEVATION.
2. CONSTRUCT SWALE. SIDE SLOPE 4:1 MAX.
3. CONSTRUCT VALLEY GUTTER PER C1.1
4. CONSTRUCT FLUSH CURB PER C1.1
5. REDWOOD HEADER BOARD AGAINST FENCE POSTS

GRADING PLAN
 SUSAN B. ANTHONY E.S.
 7864 DETROIT BLVD.
 SACRAMENTO, CA 95832
 SACRAMENTO CITY USD

DATE: 04/12/2016
 DRAWN BY: ML
 JOB #: 15-227
 SCALE: AS NOTED

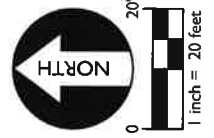
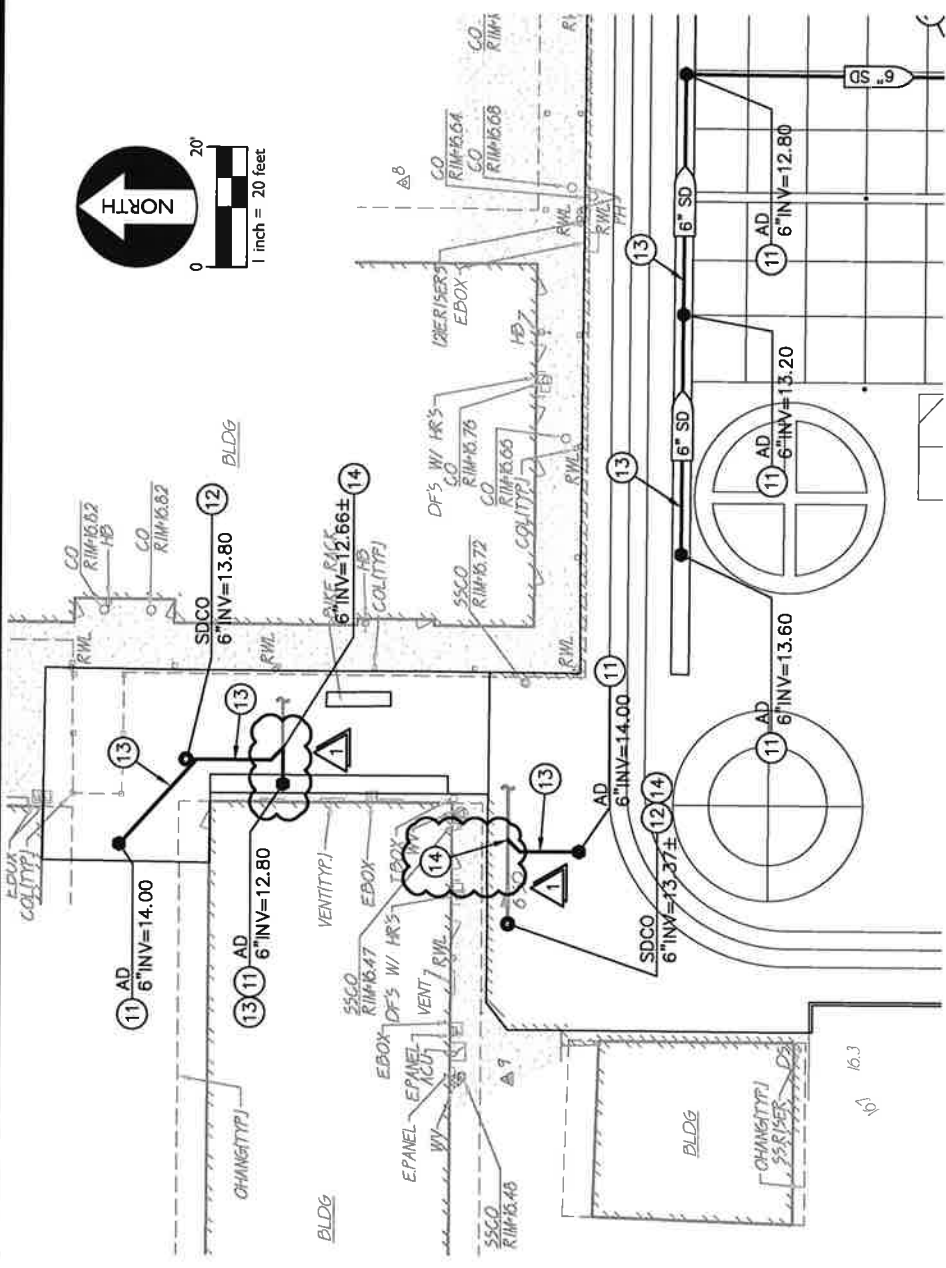


A-12

DATE: 04/12/2016
 DRAWN BY: ML
 JOB#: 15-227
 SCALE: AS NOTED

DRAINAGE PLAN
 SUSAN B. ANTHONY E.S.
 7864 DETROIT BLVD.
 SACRAMENTO, CA 95832
 SACRAMENTO CITY USD

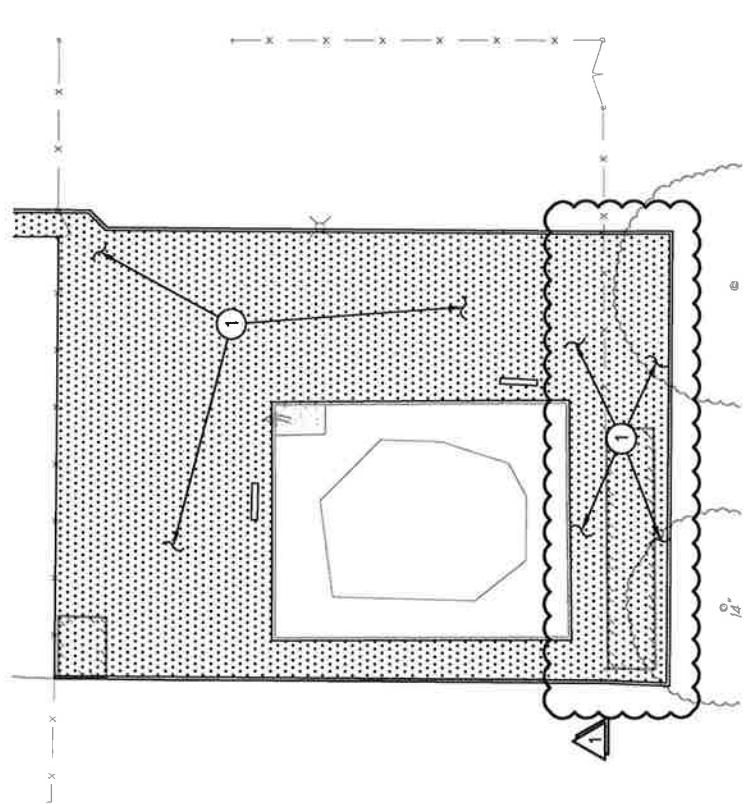
15-227 C1.2 A



DATE: 04/12/2016
 DRAWN BY: ML
 JOB #: 15-227
 SCALE: AS NOTED

PAVING PLAN
 SUSAN B. ANTHONY E.S.
 7864 DETROIT BLVD.
 SACRAMENTO, CA 95832
 SACRAMENTO CITY USD

15-227 C2.1 A



BID NOTES:
 ALL WORK SHOWN THIS PLAN IS TO
 BE PART OF A LINE ITEM FOR
 ADDITIVE ALTERNATE #1 ON THE BID
 FORM.

DOCUMENT 01 22 00

ALTERNATES AND UNIT PRICING

PART 1 – ALTERNATES

1.01 RELATED DOCUMENTS AND PROVISIONS:

All Contract Documents should be reviewed for applicable provisions related to the provisions in this document, including without limitation:

- A.** General Conditions;
- B.** Special Conditions;
- C.** Bid Form and Proposal;
- D.** Instruction to Bidders.

1.02 DESCRIPTION

The items of work indicated below propose modifications to, substitutions for, additions to and/or deletions from the various parts of the Work specified in other Sections of the Specifications. The acceptance or rejection of any of the alternates is strictly at the option of the District subject to District's acceptance of Contractor's stated prices contained in this Proposal.

1.03 GENERAL

Where an item is omitted, or scope of Work is decreased, all Work pertaining to the item whether specifically stated or not, shall be omitted and where an items is added or modified or where scope of Work is increased, all Work pertaining to that required to render same ready for use on the Project in accordance with intention of Drawings and Specifications shall be included in an agreed upon price amount.

1.04 BASE BID

The Base Bid includes all work required to construct the Project completely and in accordance with the Contract Documents.

1.05 ALTERNATES

- A.** Additive Alternate #1: All work associated with the "Apparatus Area".

The above Alternate descriptions are general in nature and for reference purposes only. The Contract Documents, including, without limitation, the Drawings, Specifications, and Addenda, must be referred to for the complete scope of Work.

**PLAYGROUND PAVING
SUSAN B. ANTHONY ELEMENTARY SCHOOL**

PART 2 - UNIT PRICING, Not Applicable

PART 3 - EXECUTION, Not Applicable

END OF DOCUMENT

Additive Alternates:

Additive Alternate #1

_____ Dollars	\$ _____
Apparatus Area	

Descriptions of alternates are primarily scope definitions and do not necessarily detail the full range of materials and processes needed to complete the construction.

- 55. The undersigned has reviewed the Work outlined in the Contract Documents and fully understands the scope of Work required in this Proposal, understands the construction and project management function(s) is described in the Contract Documents, and that each Bidder who is awarded a contract shall be in fact a prime contractor, not a subcontractor, to the District, and agrees that its Proposal, if accepted by the District, will be the basis for the Bidder to enter into a contract with the District in accordance with the intent of the Contract Documents.
- 56. The undersigned has notified the District in writing of any discrepancies or omissions or of any doubt, questions, or ambiguities about the meaning of any of the Contract Documents, and has contacted the Construction Manager before bid date to verify the issuance of any clarifying Addenda.
- 57. The undersigned agrees to commence work under this Contract on the date established in the Contract Documents and to complete all work within the time specified in the Contract Documents.
- 58. The liquidated damages clause of the General Conditions and Agreement is hereby acknowledged.
- 59. It is understood that the District reserves the right to reject this bid and that the bid shall remain open to acceptance and is irrevocable for a period of ninety (90) days.
- 60. The following documents are attached hereto:
 - Bid Bond on the District's form or other security
 - Designated Subcontractors List
 - Site-Visit Certification
 - Non-Collusion Declaration
- 61. Receipt and acceptance of the following addenda is hereby acknowledged:

No. _____, Dated _____	No. _____, Dated _____
No. _____, Dated _____	No. _____, Dated _____
No. _____, Dated _____	No. _____, Dated _____