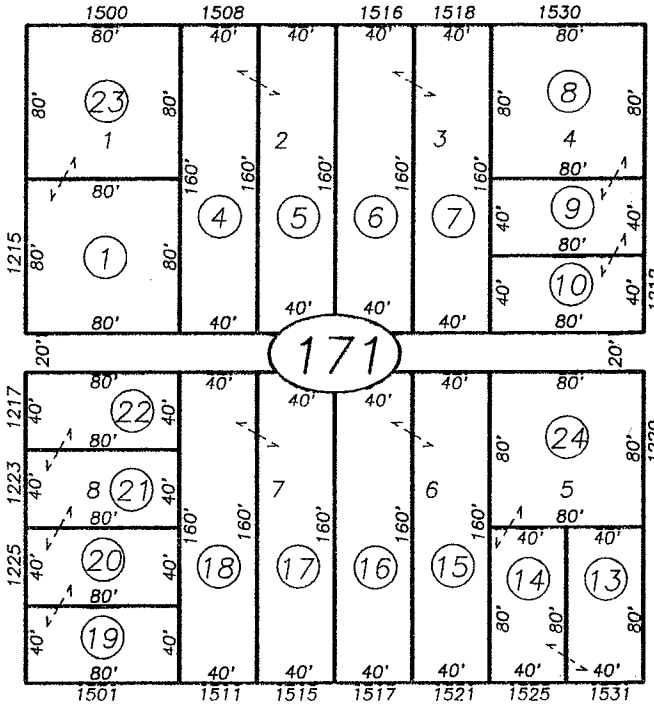


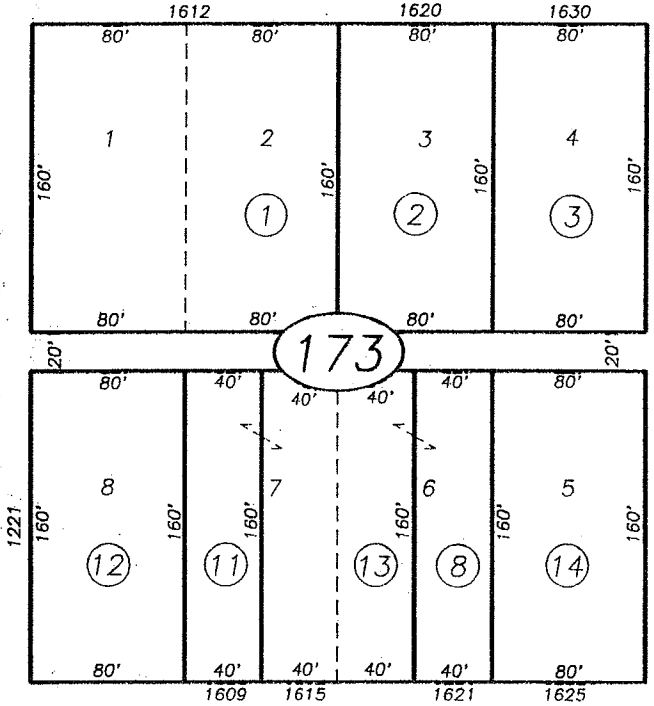
POR. SEC.1 T.8N., R.4E. M.D.M. & M.

ST. 006-017

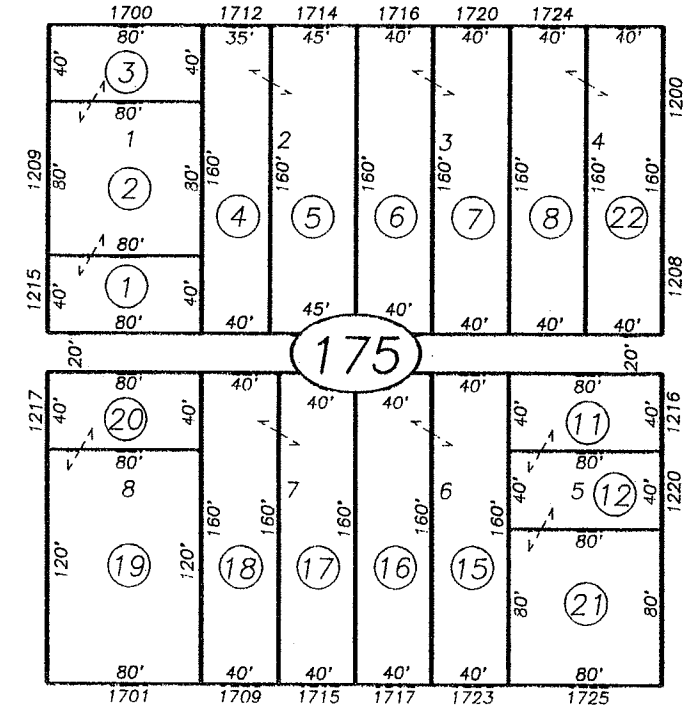
ST. 80'



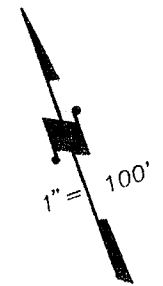
ST. 80'



ST. 80'

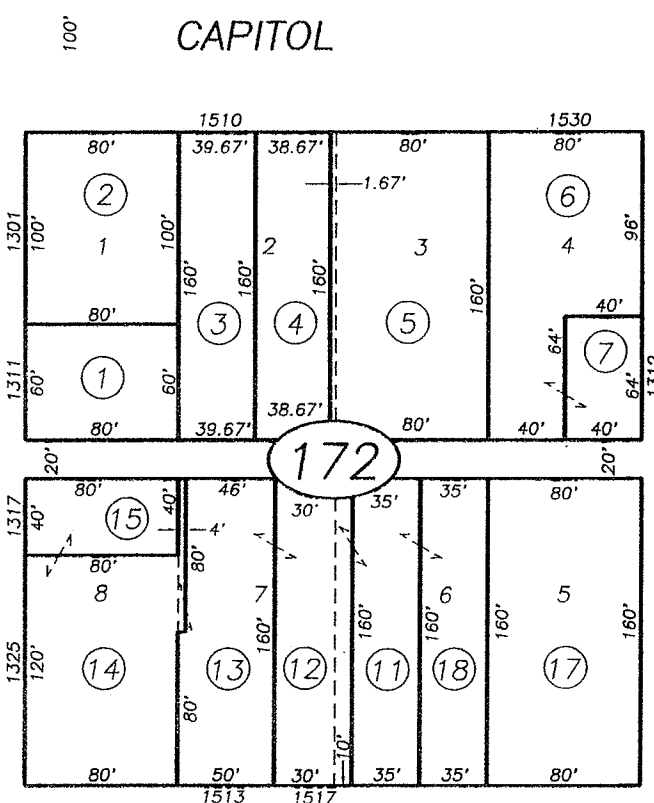


ST. 80'

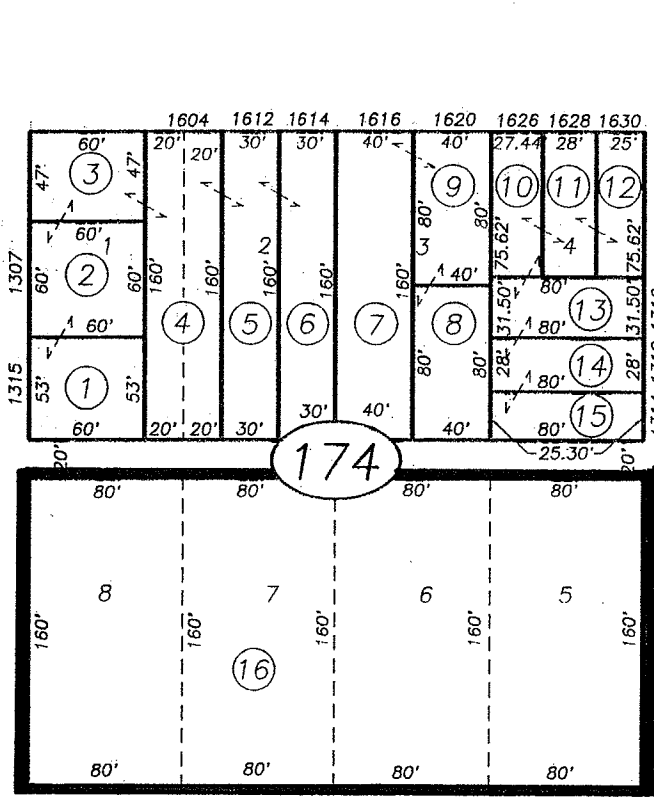


16

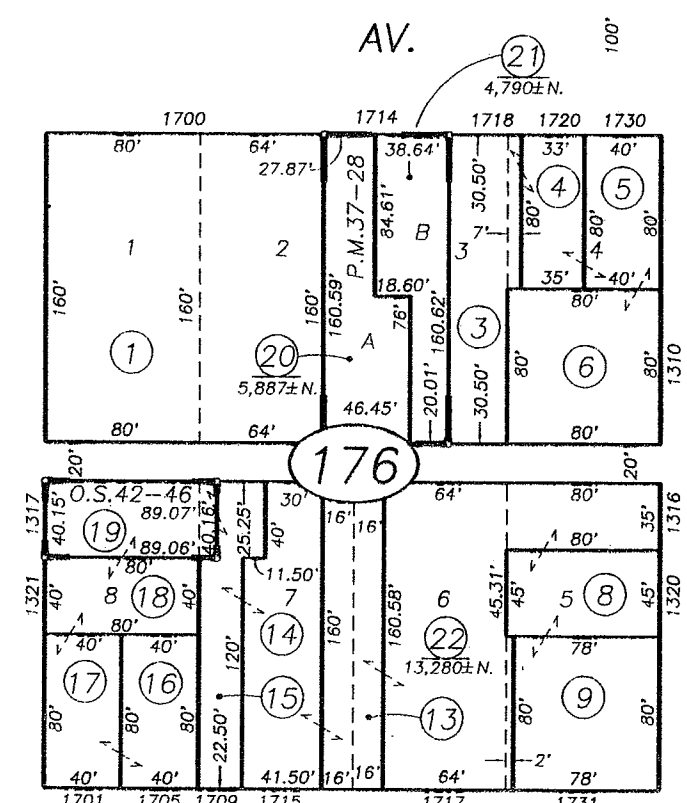
ST. 80'



ST. 80'



ST. 80'



ST. 80'

Bk. 007

Record of Survey O.S. Bk.42, Pg.46 (12-16-87)

ST. 80'

CITY OF SACRAMENTO  
Old Administration (16th & N)  
006-0174-016

23