



Approve Resolution No. 3496 to Surplus Maple Elementary

Board Meeting
May 15, 2025
Agenda Item No. 10.8

Presented by:
Nathaniel Browning
Director, Planning and Property Management

Facilities is Building the Foundation of Equity

SCUSD CORE VALUE

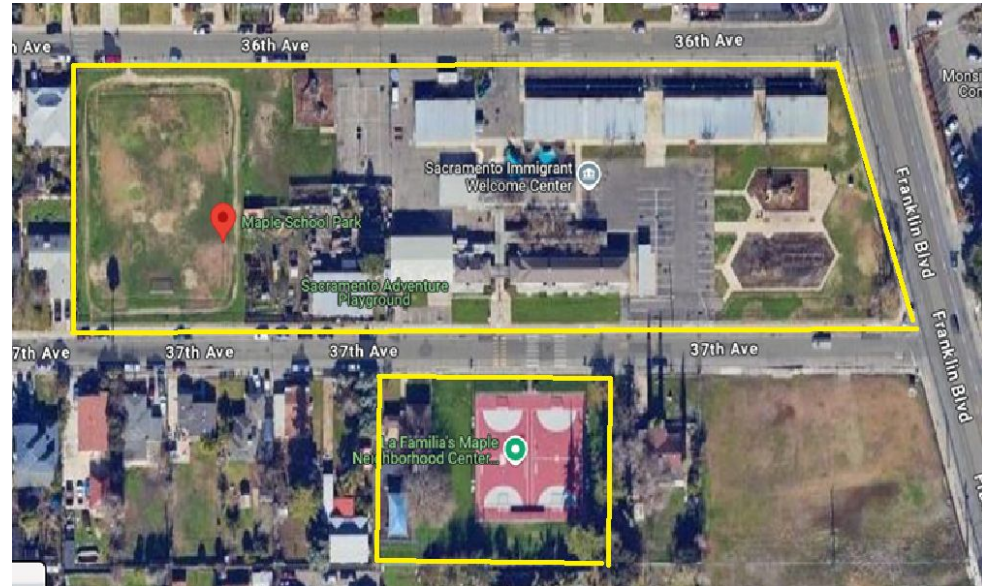
We recognize that our system is inequitable by design and we vigilantly work to confront and interrupt inequities that exist to level the playing field and provide opportunities for everyone to learn, grow and reach their greatness.

SCUSD GUIDING PRINCIPLE

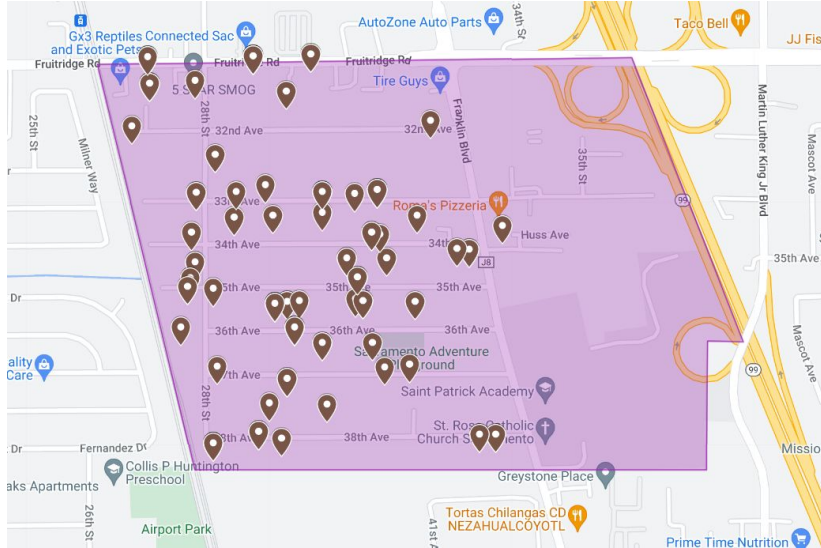
All students are given an equal opportunity to graduate with the greatest number of postsecondary choices from the widest array of options

Overview of Property

- Closed as a school in 2013.
- Leased since 2015.
- One entity has leased the site the entire time.



Maple



The previous Maple Boundary.

- 49 households now currently attend Ethel Phillips.

Cost of Operation

2023-24 Site Costs	
Utilities	-\$129,531
Work Orders	-\$14,321
Property Insurance	-\$160,553
Revenue	\$153,015
TOTAL COST	-\$151,390



Educational Purpose



Questions?

