



# College & Career Readiness Update

Board Meeting  
April 3.2025  
Agenda Item No. 10.2

**Presented by:**

Christina Espinosa, Director, College & Career Readiness  
Daniel Spinka, Director, Career Readiness  
Jill Thom, Director, Master Scheduling

# Every system is perfectly designed to get the results that it gets

## SCUSD Core Values

We recognize that our system is inequitable by design and we vigilantly work to confront and interrupt inequities that exist to level the playing field and provide opportunities for everyone to learn, grow and reach their greatness.

## SCUSD GUIDING PRINCIPLE

All students are given an equal opportunity to graduate with the greatest number of postsecondary choices from the widest array of options

# Glossary of Terms

**AA**-African American

**A-G-15** specific courses required to attend a 4 year public college/university in CA

**AP**-Assistant Principal

**APIDA**-Asian Pacific Islander Desi American

**CALPADS**-California Longitudinal Pupil Achievement Data System

**CCI**-College & Career Indicator

**CCR**-College & Career Readiness

**Completers**-Students who complete a sequence of two CTE courses

**CPA grants**-California Partnership Academy

**CSU**-California State University

**CTE**-Career Technical Education

**CTEIG**-Career Technical Education Incentive Grant

**EL**-English Learners

**FPM**-Federal Program Monitoring

**HBCU**-Historically Black Colleges & Universities

**IEP**-Individual Education Plan

**IHE**-Institution of Higher Education

**LCAP**-Local Control Accountability Plan

**LCFF**-Local Control Funding Formula

**MOU**-Memorandum of Understanding

**OCR** - Office of Civil Rights

**SWD**-Students with Disabilities

**SWP**-Strong Workforce Program Grant

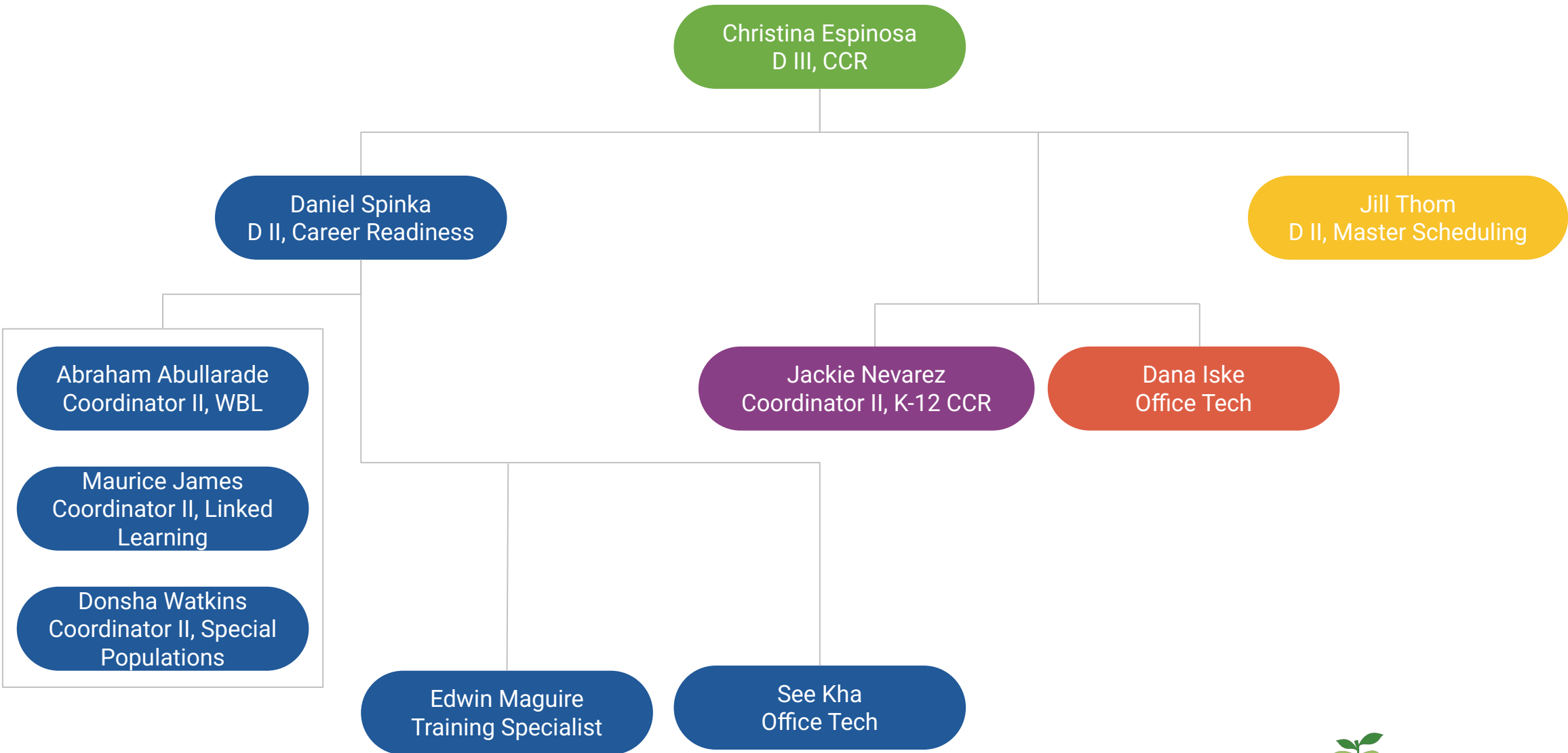
**UC**-University of California

**WBL**-Work based learning

# College & Career Readiness Department



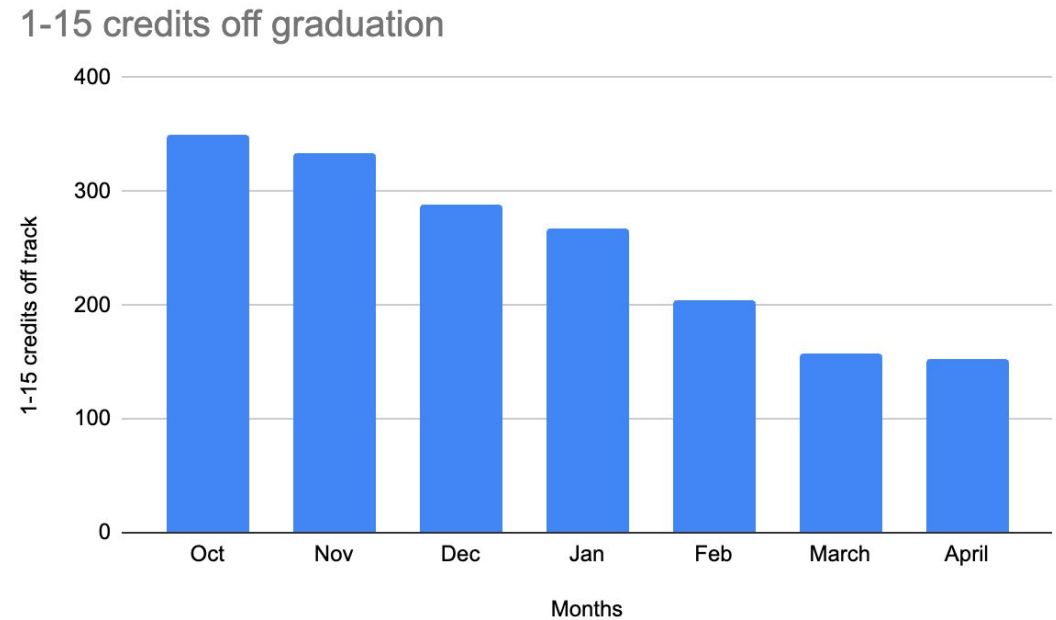




# LCAP Goal 1

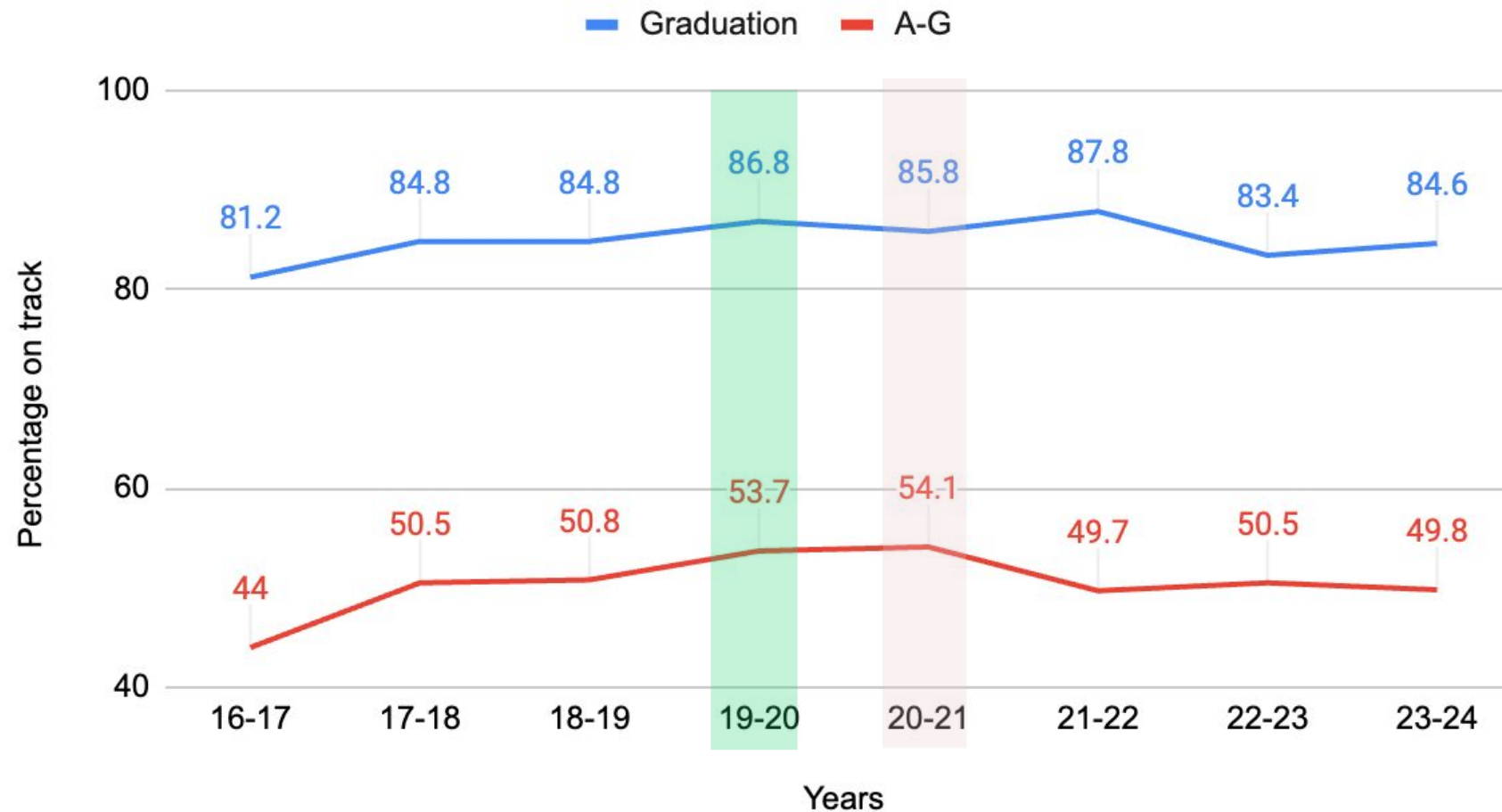
Goal 1 is about graduation outcomes. By 2027, the following cohort outcomes will be achieved:

- Graduation rate increased by 5% and
- College/Career Indicator (CCI) indicator increased by 1 Status Level from the 2023-24 Dashboard
- A-G
- CTE Completers (1 concentrator + 1 capstone course)



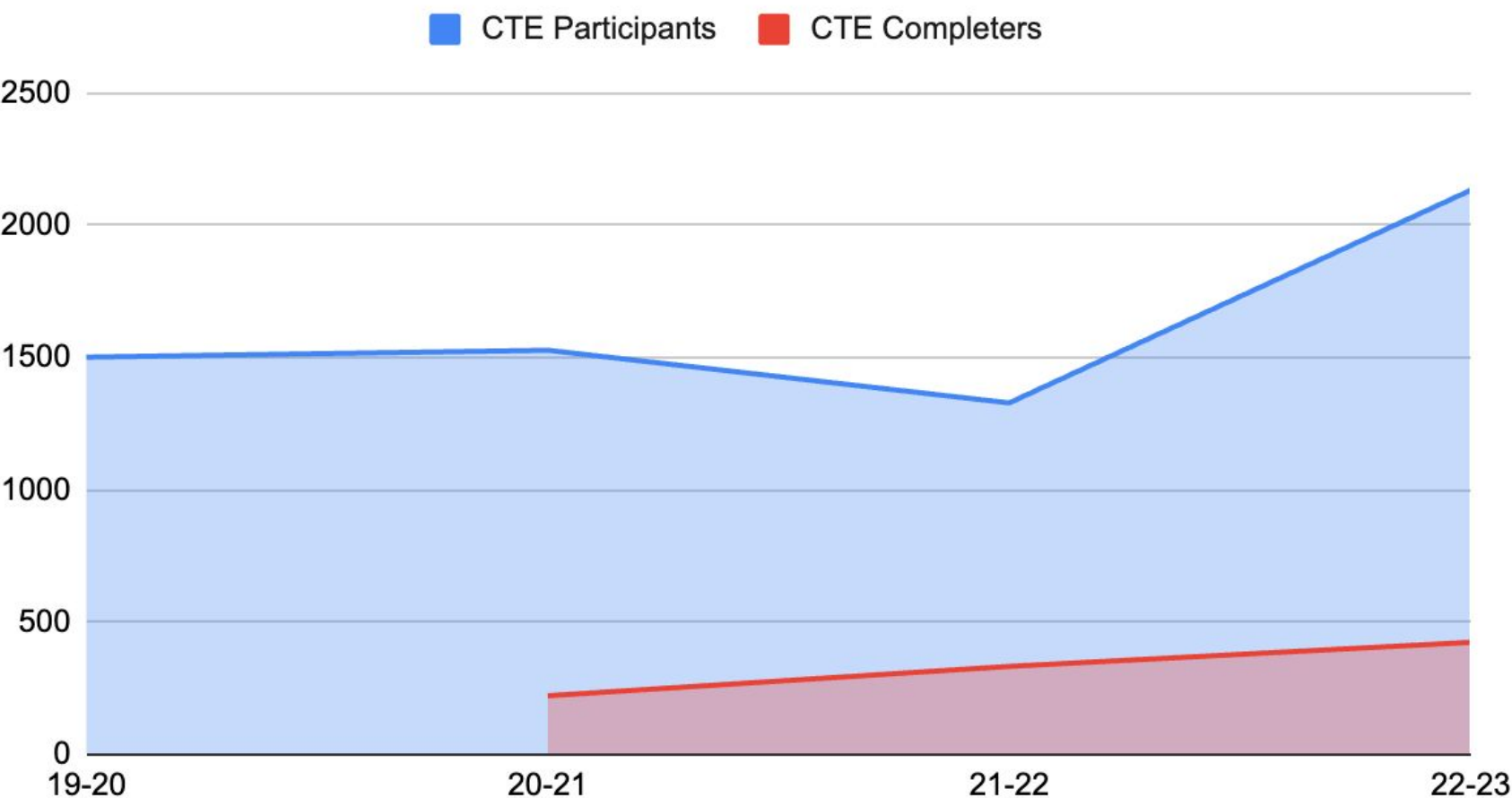
# Graduation & A-G Historical Data

## Graduation and A-G Completion



# CTE Participation and Completion

CTE Participants and CTE Completers





# School Counseling

- **Direct support to all middle and high school counselors**
  - Coordination of professional development
    - FAFSA/CADAA, Webgrants, Signs of suicide, college matriculation, course articulation (A-G), 504, NCAA, CSU/UC/CCC, AB Graduation Plans, Immigrant Rights, Trauma Informed Care
- **Coordination of district-wide, tier 1, college and career readiness experiences for all middle and high school students**
  - FAFSA/CADAA, college applications, college application waivers, college and career exploration, annual college fairs (HBCU/STC/APIDA), largest regional college and career fair, targeted student enrichment conferences, California Colleges.edu, 12th grade college eligibility packets, scholarships, & early college savings accounts, 9th grade site-level engagement,
- **Infrastructure of supports**
  - Intern management, MOU adherence, data exchanges, legislative compliance (FAFSA, FPM, OCR), risk management
- **Cross departmental collaboration to support graduation, A-G, college matriculation**
  - Youth Development, Student Support Services (Homeless/Foster Youth Service), MLD, Community Schools, Adult Ed, Athletics, Nutrition Services, Innovative Schools, Risk Management, Tech
- **Higher education and external educational collaborations**
  - UC Merced Automatic Admission Program, Host Northern CA Regional CSU College Night, Host CSAC Statewide Workshop, CSUS College Assistance Migrant Program, Black Chamber of Conference (YLC)

# College Readiness Data

CCR College and Career Fair	~400
School site sponsored college & career fair events	10,039
HBCU Fair	435
Financial Aid Events	312
CCC, CSU, UC, Private College Application Workshops	971
Total Sac State Applicants	797
APIDA, Cesar Chavez, Steps to College Participants	845

# MyAP-Four Year Plan

Save

Course Plan Report

Documents

as List

Program: SCUSD 225 Graduation Requirements (Graduation)

@scusd.edu

Approved by parent/legal guardian

Grade: 09 60.0 / 60.0	Grade: 10 65.0 / 60.0	Grade: 11 60.0 / 55.0	Grade: 12 40.0 / 50.0
<b>English 09 (10.0 / 10.0)</b> 10.0 / 10.0 EZS101 ENG 9 1P - 5.0 EZS102 ENG 9 2P - 5.0	0.0 / 0.0	0.0 / 0.0	0.0 / 0.0
		Type to search or select courses	Type to search or select courses
<b>English 10 (10.0 / 10.0)</b> 0.0 / 0.0	10.0 / 10.0 EVS213 ENG 10 MSS 1P - 5.0 EVS214 ENG 10 MSS 2P - 5.0	0.0 / 0.0	0.0 / 0.0
		Type to search or select courses	Type to search or select courses
<b>English 11 (10.0 / 10.0)</b> 0.0 / 0.0	0.0 / 0.0	10.0 / 10.0 EVS328 AP ENGL LANG 1HP - 5.0 EVS329 AP ENGL LANG 2HP - 5.0	0.0 / 0.0
			Type to search or select courses
<b>English 12 (10.0 / 10.0)</b> 0.0 / 0.0	0.0 / 0.0	0.0 / 0.0	10.0 / 10.0 ERW108 ERWC MSS 1P - 5.0 ERW109 ERWC MSS 2P - 5.0
		Type to search or select courses	
<b>Geography (5.0 / 5.0)</b>			

# Master Scheduling

- Direct support to Counselors, AP's, Principals around building a student centered Master Schedule
- Quality control as it relates to student programming
  - Partnership with Multilingual Department to support Newcomer Pathway
  - CTE cohorting
  - Equitable AP student placement
- Launch of electronic college and career plan imbedded into the student information system (MYAP)
- Updating of courses in IC and alignment to UC Management Portal which creates more clarity and opportunity when applying to college



# SCUSD Pathways

2	CK McClatchy	<ul style="list-style-type: none"> <li>• Legal Practices</li> <li>• Public Safety</li> </ul>
4	Hiram Johnson	<ul style="list-style-type: none"> <li>• Design and Visual Media</li> <li>• Patient Care</li> <li>• Entrepreneurship</li> <li>• Public Safety</li> </ul>
3	John F Kennedy	<ul style="list-style-type: none"> <li>• Food Service/Hospitality</li> <li>• Product Innovation &amp; Design/Manufacturing</li> <li>• Product Innovation &amp; Design/Transportation</li> </ul>
4	Luther Burbank	<ul style="list-style-type: none"> <li>• Plant and Soil Science</li> <li>• Multimedia Production</li> <li>• Residential and Commercial Construction</li> <li>• Legal Practices</li> </ul>
4	Rosemont	<ul style="list-style-type: none"> <li>• Multimedia Productions</li> <li>• Mechanical Systems Installation &amp; Repair</li> <li>• Engineering Technology</li> <li>• Food Service &amp; Hospitality</li> </ul>

# SCUSD Pathways

1	Health Professions	<ul style="list-style-type: none"><li>• Patient Care</li></ul>
2	New Technology	<ul style="list-style-type: none"><li>• Information and Communication Technologies</li></ul>
1	School of Engineering & Science	<ul style="list-style-type: none"><li>• Engineering Design</li></ul>
3	American Legion	<ul style="list-style-type: none"><li>• Entrepreneurship</li><li>• Child Development</li><li>• Food Service &amp; Hospitality</li></ul>
1	West High School	<ul style="list-style-type: none"><li>• Architectural Design, Engineering Design, Engineering Technology</li></ul>

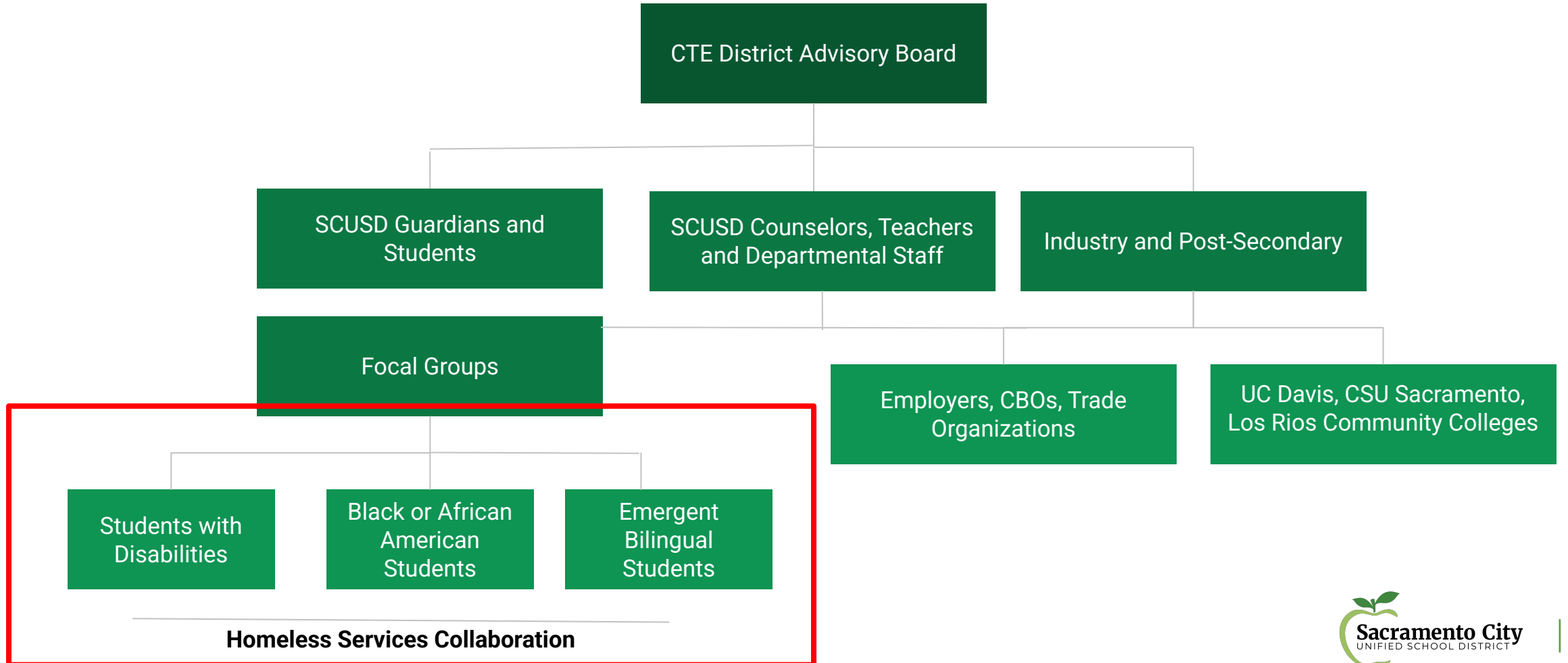
# CTE Fiscal Management

Project  
Specific

01	LCFF	<ul style="list-style-type: none"><li>• Collaboration with Business Office</li><li>• Budget Development</li><li>• Managing blanket orders, billing, etc</li></ul>
02	Golden State Pathways	<ul style="list-style-type: none"><li>• Data reporting</li><li>• Regular fiscal reporting</li><li>• Compliance oversight</li></ul>
03	K12 Strong Workforce	<ul style="list-style-type: none"><li>• Annual grant application</li><li>• Regular expenditure reports</li><li>• Compliance oversight</li><li>• Match reporting and community college collaboration</li></ul>
04	CTEIG	<ul style="list-style-type: none"><li>• Annual grant submissions</li><li>• Regular expenditure reports</li><li>• Compliance oversight</li><li>• Match reporting</li></ul>
05	Perkins	<ul style="list-style-type: none"><li>• Annual grant Application</li><li>• Quarterly claim submission</li><li>• Strict spending compliance</li><li>• FPM, OCR</li></ul>

Restricted  
Federal and  
State  
Compliance  
Grants

# CTE Community Collaboration





# CTE and Linked Learning

- Developing industry recognized certification programs
- Provided support services guidance, counseling
- Mentors and guest speakers such as the California Air Resources Board
- Field Trips like the Zero Emission Vehicle Tour
- Present/Recruit at college and career fair
- Scaffolding instructional practices for students with disabilities and multilingual learners





# Work-Based Learning

- Increasing District-Wide Work-Based Learning experiences
  - Goal for 2024/2025: 5,260
  - To Date: 4,000
- Coordinating Work-Based Learning experiences (job shadows, workplace tours, internships, guest speakers) for focal group students
  - SWD, Black or AA, Emergent Bilingual, Women in Construction
- Summer 2024 Career Readiness engagements
  - 150 students: Career Launchpad, Careers Paths to Success, Makerspace





# Work-Based Learning



# **CTE and Homeless Student Services Collaboration**



# CTE Instruction





# CTE Special Populations



# 2020-2021 Four-Year Graduation Rate Comparison

## CTE Concentrators vs. All Students Experiencing Homelessness (SEH)

96%

4-Year Graduation Rate of  
**SEH who are  
CTE Concentrators\***

*\*From Perkins V Data Explorer  
n=3749 total SEH students*

68%

4-Year Graduation Rate of  
**All SEH\*\***

*\*\*From CDE's DataQuest  
n=33,935 total SEH students*



# CTE Special Populations

- **Development of Focal Groups**
  - Aimed to enhance accessibility, engagement, and success for diverse student populations.

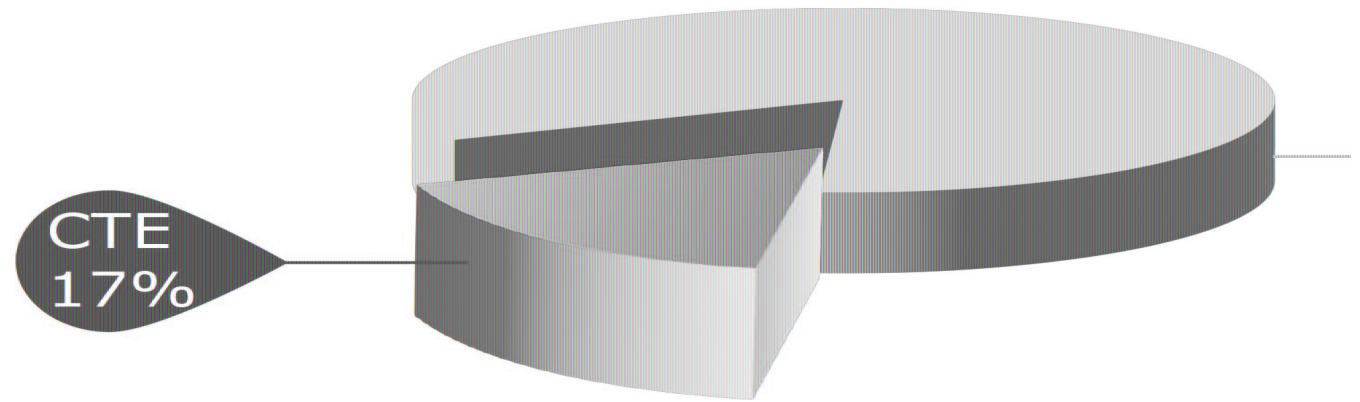
<b>Students With Disabilities</b>	<b>English Emerging Learners</b>	<b>African American/Black Students</b>	<b>CTE Student Advisory Board</b>	<b>Students Experiencing Homelessness</b>
Community College Tours, Career Launchpad, Professional Development for Staff	Materials and Resources Translated, SCOE Summer Initiative, Engagement & Academic Matriculation Initiative, Professional Development for Staff	Wiley Manuel Partnership, Middle School Mentorship, SCOE- Landscape Analysis: Black Students in Sacramento County	18 Students, at least two students from each special population represented, reviewed CTE Data, implemented initiatives to make CTE relevant, engaging, & impactful for all students, implemented student internships, 15 Juniors & seniors applied for CA Civic Seal of Engagement	Targeted student support/recruitment efforts, Collaborate with Homeless Youth staff, counselors and school leads, Collaboration and efforts across departments

**Youth without a high school diploma are 4.5x more likely to experience homelessness later in life.**

**In SCUSD, only 60% of students experiencing homelessness graduate high school.**

# Data Deep Dive

- Only **68** out of **399** SEH in **high school** are in enrolled in CTE classes.
- Only **19** out of **107** SEH in **10th grade** are in enrolled in CTE classes.
- That's **~17%** of all SEH.



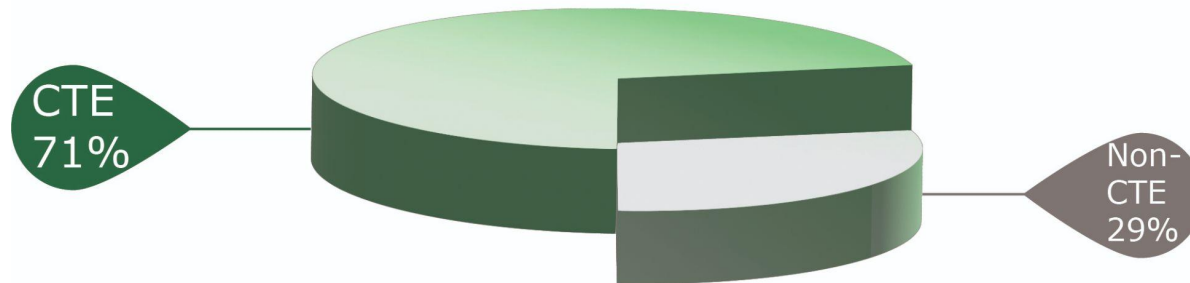
# Continuous Improvement Project

- Analyze Data
- Convene action teams at high school sites to analyze data and strategize about how to connect more 9th grade students to CTE
- Work with counselors and 9th grade academy teachers to conduct individual outreach to all students

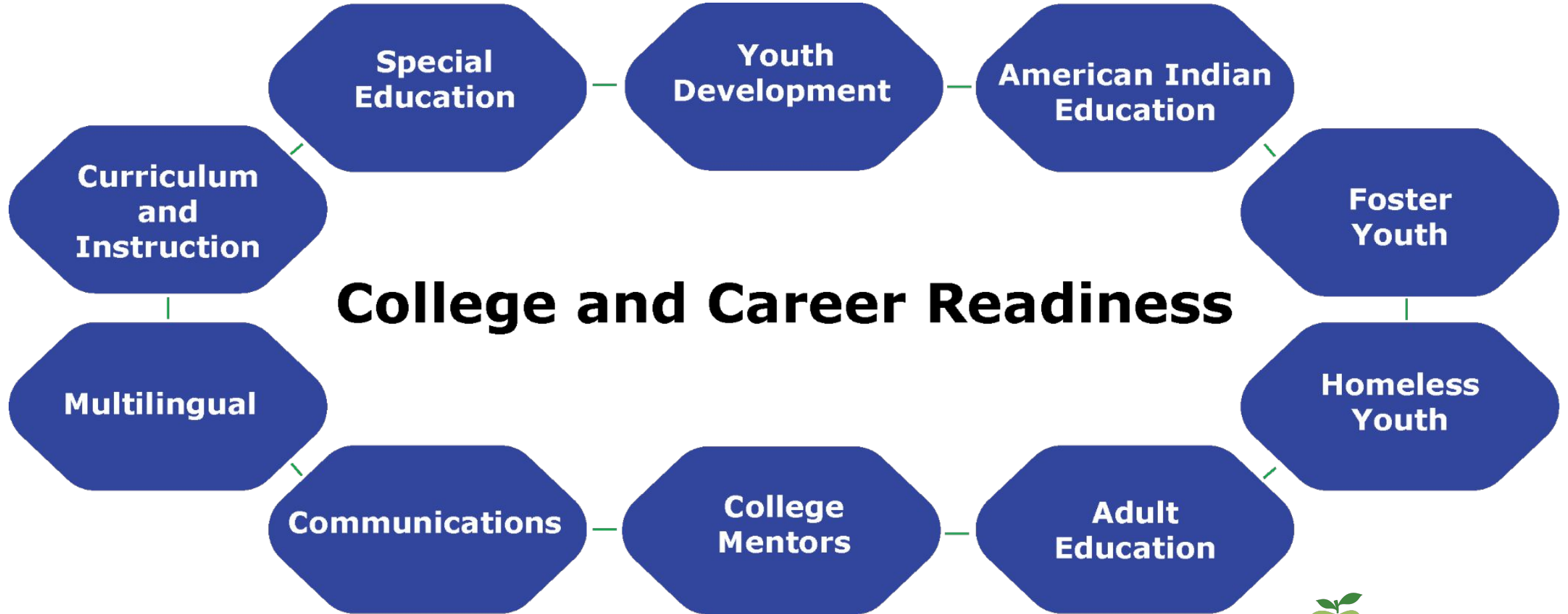


# Preliminary Results

- **43** out of **60 9th grade** SEH at two focus high schools are enrolled in CTE pathways for 25/26 school year.
- That's **~71%** of SEH in 9th grade who received 1-1 outreach that are now enrolled in CTE.



# Multi Department Collaboration (In support of schools)



# CCR Future Innovations!

- Partnering with our community to provide extended learning for students in the summer of 2025
  - Pride Industries Congressional Grant to support 80 Students with Disabilities.
  - SCOE to support 60 Multilingual, general education and African American or Black students and Homeless Youth
- Granted K12 Strong Workforce grant to support CTE Extended learning for priority populations: SWD, emergent bilingual students, African American or Black, Homeless Youth with a heavy emphasis on supporting Homeless Youth.
- 180 students in 2025-26 will receive Green Career Certifications, PPE, and training through California Mobility Center.
- Partnering with Sacramento City College, MADE Studios, California Mobility Center for future opportunities, American Education for Indigenous CTE Day in Fall of 2025.
- 9th grade summer enrichment (Science/Math)

**Q & A**