



# Attachment AD2.14

- GENERAL NOTES:**
- NO STRUCTURAL BEAMS SHALL BE PENETRATED OR ALTERED.
  - PROVIDE APPROPRIATE WM5500 TO WM2300 FITTINGS TO EXIT WM5500 TO TRANSITION DOWN TO DROP LOCATIONS.
  - RELOCATE EXISTING INTRUSION DEVICES UP OR DOWN TO ALLOW NEW RACEWAY TO BE INSTALLED. VERIFY THAT THE RELOCATED DEVICE IS NOT CAUSING A FAULT ON THE ALARM PANEL PRIOR TO LEAVING THE SITE.
  - ALL (N) IDFS SHALL HAVE A DEDICATED QUAD ELECTRICAL OUTLET INSTALLED INSIDE THE IDF CABINET, ON HINGE SIDE APPROX. 12" FROM BOTTOM OF CABINET.
  - NEW DATA DROPS INSTALLED WILL REQUIRE WM2300 INSTALLED TO EACH LOCATION.

- SHEET NOTES:**
- 2 EA. 2" STUBS INTO WM5500 ENTRANCE END FITTING.
  - WM5500 HIGH ON WALL. NOTCH BASE OF RACEWAY TO CROSS OVER SINGLE CHANNEL RACEWAY. PROVIDE FITTINGS AS REQUIRED TO TRANSITION UP, DOWN OR IN CORNERS.
  - PROVIDE APPROPRIATE WM5500 TO WM2300 FITTINGS TO EXIT WM5500 TO TRANSITION DOWN TO DROP LOCATIONS.
  - WM5500 INSTALLED ON FACIA BOARD. SEE DETAIL 1/7801 FOR REQUIRED WM5500 / WM2300 FITTINGS.
  - INSTALL SOLID PLYWOOD PIECES CUT TO SIZE OF WM5500 TO SPACE OUT RACEWAY EQUAL TO EXISTING WALL PANELS.
  - WM5500 HIGH ON WALL TO TRANSITION TO WM5500 MOUNED ON THE CEILING.
  - WM5500 MOUNED ON CEILING.
  - 2 EA. 2" STUBS FROM WM5500 ENTRANCE END FITTING TO ABOVE CEILING ENVIRONMENT.
  - J-HOOKS ABOVE CEILING TO ROUTE ALL CABLES.
  - 2 EA. 2" STUBS BETWEEN ROOMS ABOVE CEILING.
  - 2 EA. 2" STUBS TO ABOVE CEILING AREA.
  - 2 EA. 2" FLEX CONDUITS BETWEEN CLASSROOMS.
  - (E) SURFACE BACK BOX AND SMALL RACEWAY. REPLACE RACEWAY WITH WM2300.
  - (E) WM5400 USED FOR FIRE ALARM CIRCUITS.
  - EXTEND (E) WM5400 WITH NEW WM5400.
  - (N) WM2300. PROVIDE APPROPRIATE WM5500 TO WM2300 FITTINGS TO EXIT WM5500 TO TRANSITION DOWN TO DROP LOCATIONS.
  - REMOVE (E) 2 EA. CAT3 CABLES FROM CONDUIT.
  - REMOVE PROJECTOR POWER AND CONDUIT.
  - (E) CCTV CAMERA. REWORK EXISTING CONDUIT STUB FLUSH WITH INTERIOR WALL IF APPLICABLE. INSTALL (N) SINGLE GANG BACK BOX WITH SLANK COVER ON THE INTERIOR SIDE. REPLACE DATA CABLE WITH NEW CAT6A.
  - (N) CCTV CAMERA. SEE DETAILS FOR PENETRATION AND MOUNTING DETAILS.
  - (E) EXTERIOR INTERCOM SPEAKER. USE EXISTING BACK BOX. REPLACE WITH THE SPEAKER. REPLACE SPEAKER CABLE AND TERMINATE AT IDF PER DETAIL.
  - (N) EXTERIOR INTERCOM SPEAKER.
  - (N) EXTERIOR WIRELESS ACCESS POINT. DISTRICT TO FURNISH BRACKET AND ACCESS POINT FOR CONTRACTOR TO INSTALL. CONTRACTOR TO INSTALL PENETRATION STUB THROUGH WALL. EXTERIOR BACK BOX / CAT6A JACK PER DETAILS.
  - REMOVE (E) CLOCK AND INSTALL NEW IP CLOCK/SPEAKER COMBO UNIT. OVER THE (E) CLOCK BACK BOX.
  - REMOVE (E) IDF CABINET AND ASSOCIATED ELECTRICAL / LOW VOLTAGE CABLING AFTER NEW WING IDF IS ESTABLISHED AND CONFIRMED OPERATIONAL.
  - (N) EXTERIOR INTERCOM HORN.
  - DATA DROPS FOR FIRE ALARM PANEL. RED JACKS.
  - NEW DATA DROP INSIDE HVAC CONTROLLER CABINET. RELOCATE EXISTING ELECTRICAL TO INSIDE HVAC CONTROLLER CABINET.
  - NEW DATA DROP INSIDE INTRUSION CABINET.
  - INSTALL IDF ABOVE THE DOOR.
  - DROP FOR COUNTER PHONE. INSTALL APPROX. 18" AFF ON BACK SIDE OF COUNTER.
  - REMOVE (E) CAMERA AND RETURN TO DISTRICT. REMOVE (E) DATA CABLE.



**KMM SERVICES, INC**  
TECHNOLOGY & FIRE LIFE SAFETY

5433 El Camino Ave. Suite 5  
Carmichael, CA 95608  
Office: (916) 359-4000 www.kmm-services.com



Copyright © 2023

These drawings and specifications and the ideas, designs and arrangements represented thereby are and shall remain the property of KMM Services, Inc. and no part thereof shall be copied, disclosed, or used in connection with any other work or project other than the specific project for which they have been prepared and developed without the written consent of KMM Services, Inc. Visual contact with these drawings or specifications shall constitute conclusive evidence of these restrictions.

IF DRAWING IS NOT 30"x42" IT IS A REDUCED PRINT

**SHEET REVISIONS**

DELTA	DESCRIPTION	DATE
ADDENDUM #02		2023-04-10

**SITE KEY PLAN**

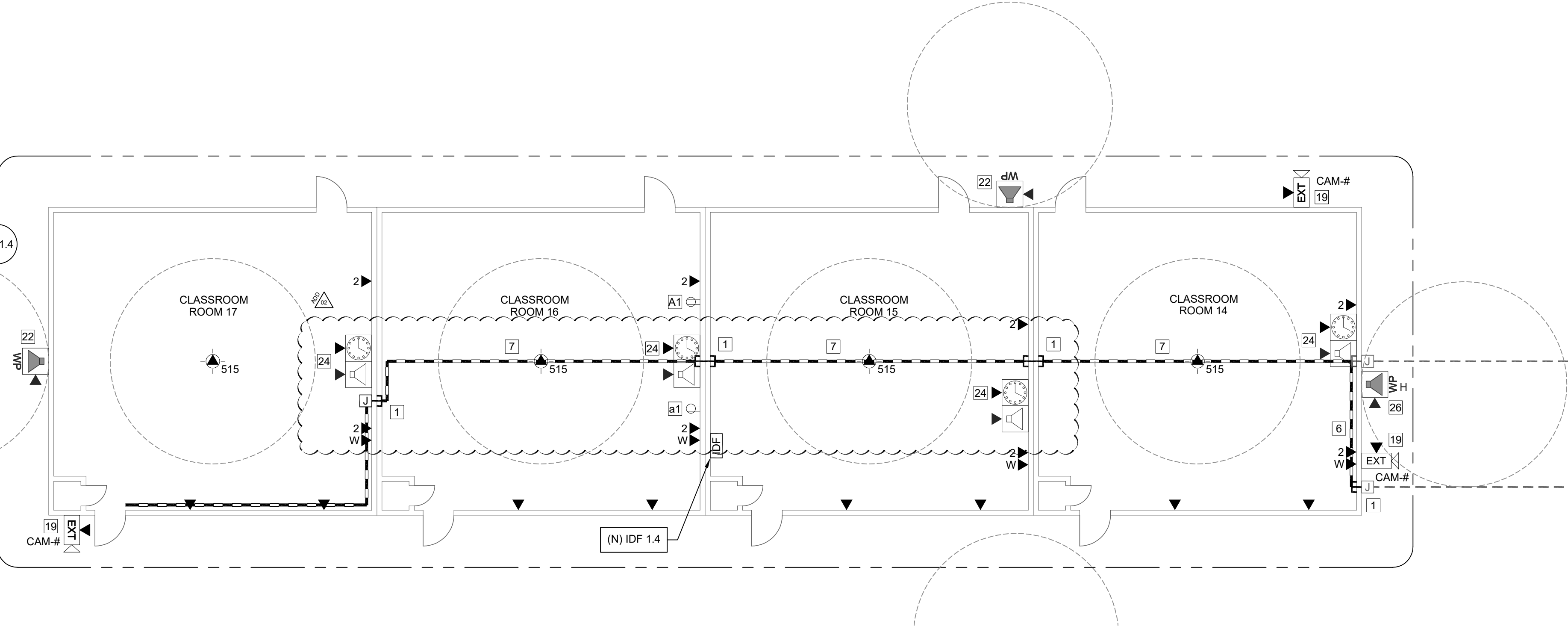
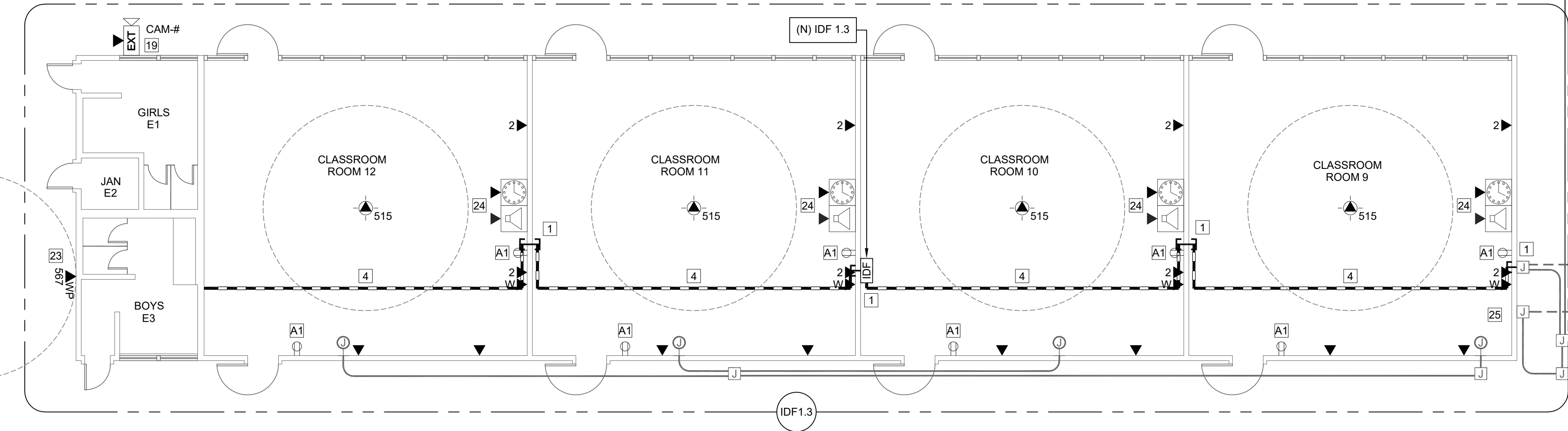
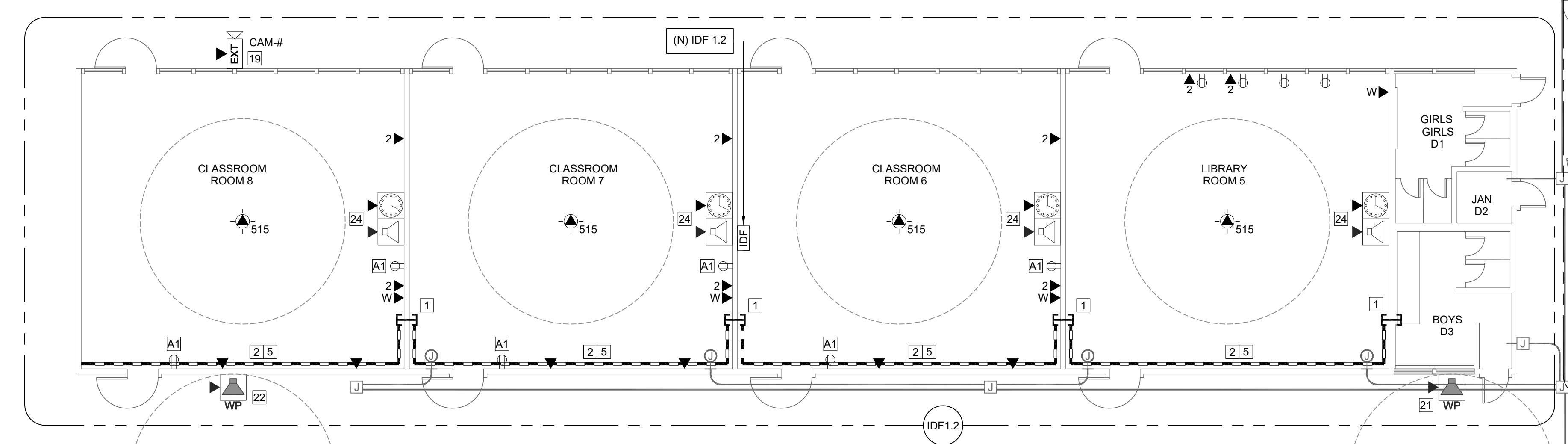
PROJECT  
**SACRAMENTO CITY USD  
CLAYTON B. WIRE ES  
TECHNOLOGY NETWORK  
INFRA. UPGRADE**  
5100 EL PASO AVE.  
SACRAMENTO, CA. 95824

SHEET TITLE  
**TECHNOLOGY  
FLOOR PLANS  
- IDF 1.2, 1.3 AND 1.4**

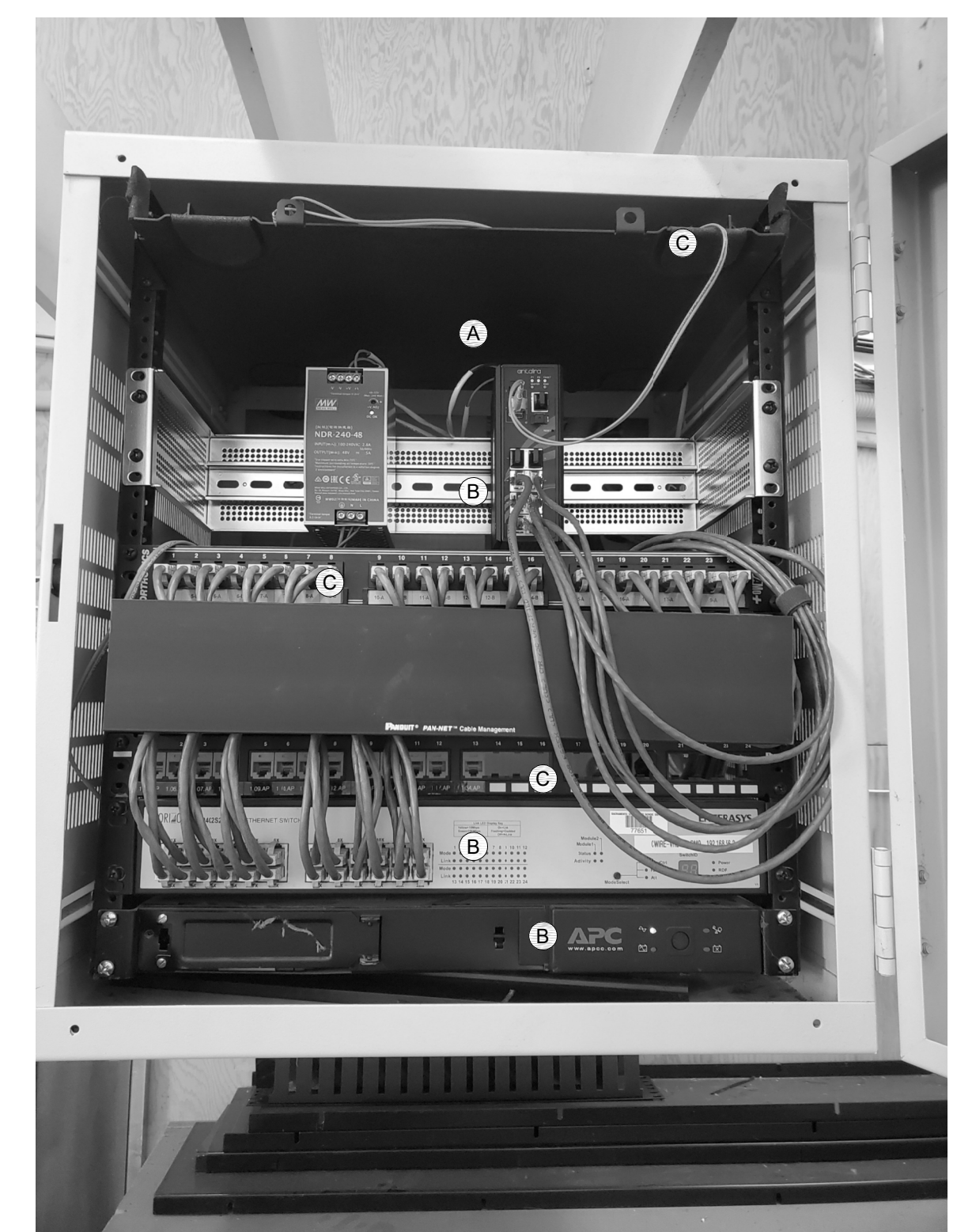
DRAWING STATUS  
**BID SET**

PROJECT NO.:	-
CONTRACT NO.:	0040-461-2
DESIGNED BY:	RK/CC
CHECKED BY:	JG
ISSUE DATE:	2023-03-16
WORKING DATE:	2023-04-07

REVISION  
**T202**

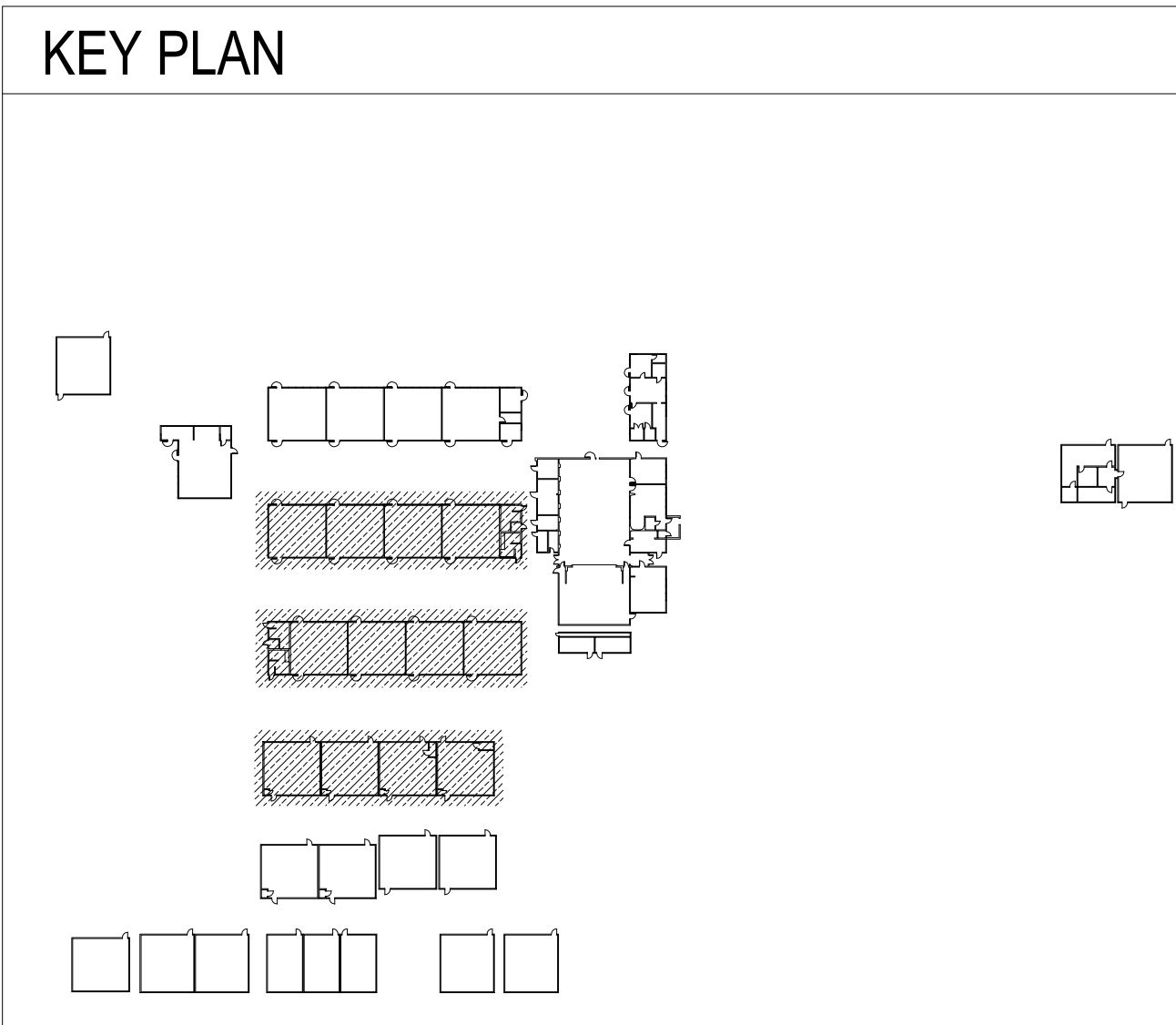
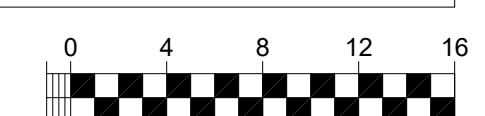


- PICTURE DETAIL NOTES:**
- IDF WALL MOUNTED CABINET SHALL REMAIN ACTIVE UNTIL (N) IDF 1.3 IN ROOM 10 IS FULLY INSTALLED, COMPONENTS MOUNTED AND POWERED UP.
  - AFTER (N) IDF 1.3 IS INSTALLED AND ACTIVATED IN ROOM 10, (E) CABINET AND EQUIPMENT IN IDF ROOM 9 SHALL BE REMOVED FROM WALL. CONTRACTOR TO COORDINATE WITH TECHNOLOGY SERVICES TO PICK UP ANY EQUIPMENT / COMPONENTS THE DISTRICT WANTS TO KEEP.
  - CONTRACTOR TO REMOVE ALL (E) FIBER AND CATEGORY 56 CABLING FROM WALLS AND CONDUITS.



**IDF ROOM 9 PICTURE DETAIL**  
SCALE: NONE

**TECHNOLOGY FLOOR PLANS - IDF 1.2, 1.3 AND 1.4**  
SCALE: 1/8"=1'



# Attachment AD2.15

EQUIPMENT SCHEDULE EXTERIOR SURFACE SPEAKER: ALL EQUIPMENT AND MATERIALS ARE CONTRACTOR FURNISHED, INSTALLED AND CONFIGURED (UNO)			
DESCRIPTION	MODEL	PART NUMBER	NOTES / DETAIL REFERENCES
TELECENTER U IP CLASSROOM MODULE	RAULAND	TCC2011A	MOUNT INSIDE BUILDING
TELECENTER U BREAKOUT MODULE	RAULAND	603101	MOUNT INSIDE BUILDING
8 OHM, 8" MOISTURE RESISTANT SPEAKER	LOWELL	8C10MR8	N/A
GRILLE VANDAL RESISTANT	RAULAND	ACC1012	N/A
SURFACE MOUNT SPEAKER ENCLOSURE	RAULAND	ACC1113	N/A

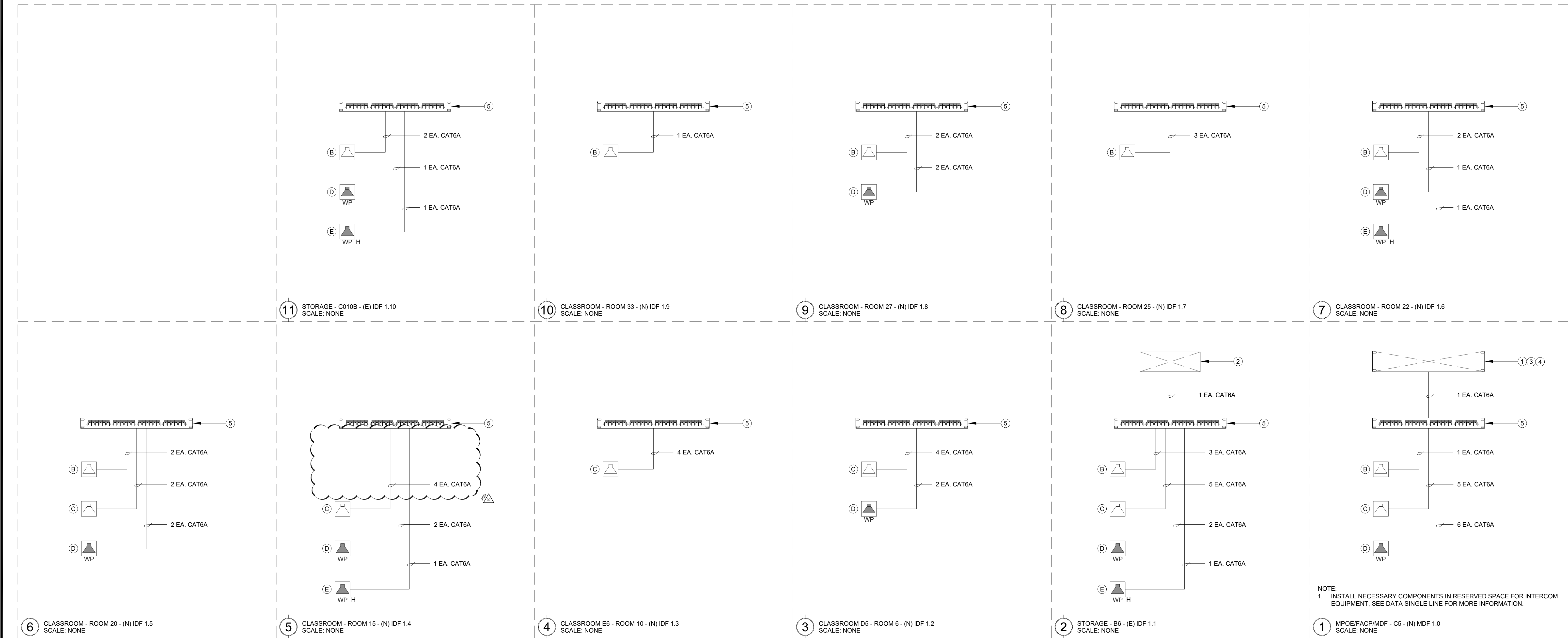
EQUIPMENT SCHEDULE EXTERIOR SURFACE HORN: ALL EQUIPMENT AND MATERIALS ARE CONTRACTOR FURNISHED, INSTALLED AND CONFIGURED (UNO)			
DESCRIPTION	MODEL	PART NUMBER	NOTES / DETAIL REFERENCES
TELECENTER U IP ZONE PAGE AMPLIFIER MODULE, POWER SUPPLY	RAULAND	TCC3022, TCC3022PS	MOUNT INSIDE BUILDING
HORN LOUDSPEAKER, GRILLE VANDAL RESISTANT	LOWELL	VRG-LUH15TX	N/A
SURFACE MOUNT SPEAKER ENCLOSURE	LOWELL	CB86-SGVPO	N/A

EQUIPMENT SCHEDULE INTERIOR SURFACE SPEAKER: ALL EQUIPMENT AND MATERIALS ARE CONTRACTOR FURNISHED, INSTALLED AND CONFIGURED (UNO)			
DESCRIPTION	MODEL	PART NUMBER	NOTES / DETAIL REFERENCES
TELECENTER U IP CLASSROOM MODULE	RAULAND	TCC2011A	MOUNT INSIDE ENCLOSURE
8 OHM, 8" SPEAKER WITH RJ45 CONNECTOR	RAULAND	US0880	N/A
SPEAKER BAFFLE	RAULAND	ACC1003	N/A
SURFACE MOUNT SPEAKER ENCLOSURE	RAULAND	ACC1112	N/A

EQUIPMENT SCHEDULE INTERIOR DROP CEILING SPEAKER: ALL EQUIPMENT AND MATERIALS ARE CONTRACTOR FURNISHED, INSTALLED AND CONFIGURED (UNO)			
DESCRIPTION	MODEL	PART NUMBER	NOTES / DETAIL REFERENCES
TELECENTER U IP CLASSROOM MODULE	RAULAND	TCC2011A	MOUNT TO SPEAKER
2X2' 8 OHM DROP-IN SPEAKER WITH RJ45 CONNECTOR	RAULAND	BAFKIT2XLRJ	N/A

EQUIPMENT SCHEDULE INTERIOR SURFACE CLOCK/SPEAKER COMBO: ALL EQUIPMENT AND MATERIALS ARE CONTRACTOR FURNISHED, INSTALLED AND CONFIGURED (UNO)			
DESCRIPTION	MODEL	PART NUMBER	NOTES / DETAIL REFERENCES
TELECENTER U IP CLASSROOM MODULE	RAULAND	TCC2011A	MOUNT IN ENCLOSURE
8 OHM, 8" SPEAKER WITH RJ45 CONNECTOR	RAULAND	US0880	N/A
IP 12" ROUND CLOCK	SAPLING	SAP-4BS-12R	N/A
GRILLE CLOCK/SPEAKER COMBO	LOWELL	AP-700	N/A
SURFACE MOUNT ENCLOSURE CLOCK/SPEAKER COMBO	LOWELL	PC712	N/A

EQUIPMENT INTERCOM SCHEDULE: ALL EQUIPMENT AND MATERIALS ARE CONTRACTOR FURNISHED, INSTALLED AND CONFIGURED (UNO)				
SYMBOL	DESCRIPTION	MODEL	PART NUMBER	NOTES / DETAIL REFERENCES
①	TELECENTER U IP CONTROLLER	RAULAND	TCC2000	N/A
②	TELECENTER U ADMIN CONSOLE		TCC2045	N/A
③	TELECENTER U AUX. IN/OUT. MODULE		TCC2033	N/A
	UNIVERSAL RACK MOUNTING KIT		TCC2099	N/A
④	TELECENTER U PROGRAM LINE INPUT MODULE		TCC2045	N/A
⑤	24-PORT PATCH PANEL	SEE DATA SINGLE LINE RACK COMPONENTS #19/T400 FOR MORE INFORMATION.		N/A



NOTE:  
1. INSTALL NECESSARY COMPONENTS IN RESERVED SPACE FOR INTERCOM EQUIPMENT. SEE DATA SINGLE LINE FOR MORE INFORMATION.



**KMM SERVICES, INC**  
TECHNOLOGY & FIRE LIFE SAFETY

5433 El Camino Ave. Suite 5  
Carmichael, CA 95608  
Office: (916) 359-4000 www.kmm.com



Copyright © 2023  
These drawings and specifications and the ideas, designs and arrangements represented thereby are and shall remain the property of KMM Services, Inc. and no part thereof shall be copied, disclosed to others, or used in connection with any other work or project other than the specific project for which they have been prepared and developed without the written consent of KMM Services, Inc. Visual contact with these drawings or specifications shall constitute conclusive evidence of these restrictions.

IF DRAWING IS NOT 30"x42" IT IS A REDUCED PRINT

SHEET REVISIONS		
DELTA	DESCRIPTION	DATE
ADDENDUM #02		2023-04-10

SITE KEY PLAN

PROJECT  
**SACRAMENTO CITY USD  
CLAYTON B. WIRE ES  
TECHNOLOGY NETWORK  
INFRA. UPGRADE**  
5100 EL PASO AVE.  
SACRAMENTO, CA. 95824

SHEET TITLE  
**TECHNOLOGY  
INTERCOM  
SINGLE LINE DIAGRAM**

DRAWING STATUS  
**BID SET**

PROJECT NO.:	-
CONTRACT NO.:	0040-461-2
DESIGNED BY:	RK/CC
CHECKED BY:	JG
ISSUE DATE:	2023-03-16
WORKING DATE:	2023-04-07

REVISION  
SHEET **T401**

# Attachment AD2.16

**FIRE ALARM SYMBOL LEGEND:**  
ALL EQUIPMENT AND MATERIALS ARE CONTRACTOR FURNISHED, INSTALLED AND CONFIGURED (UNO)

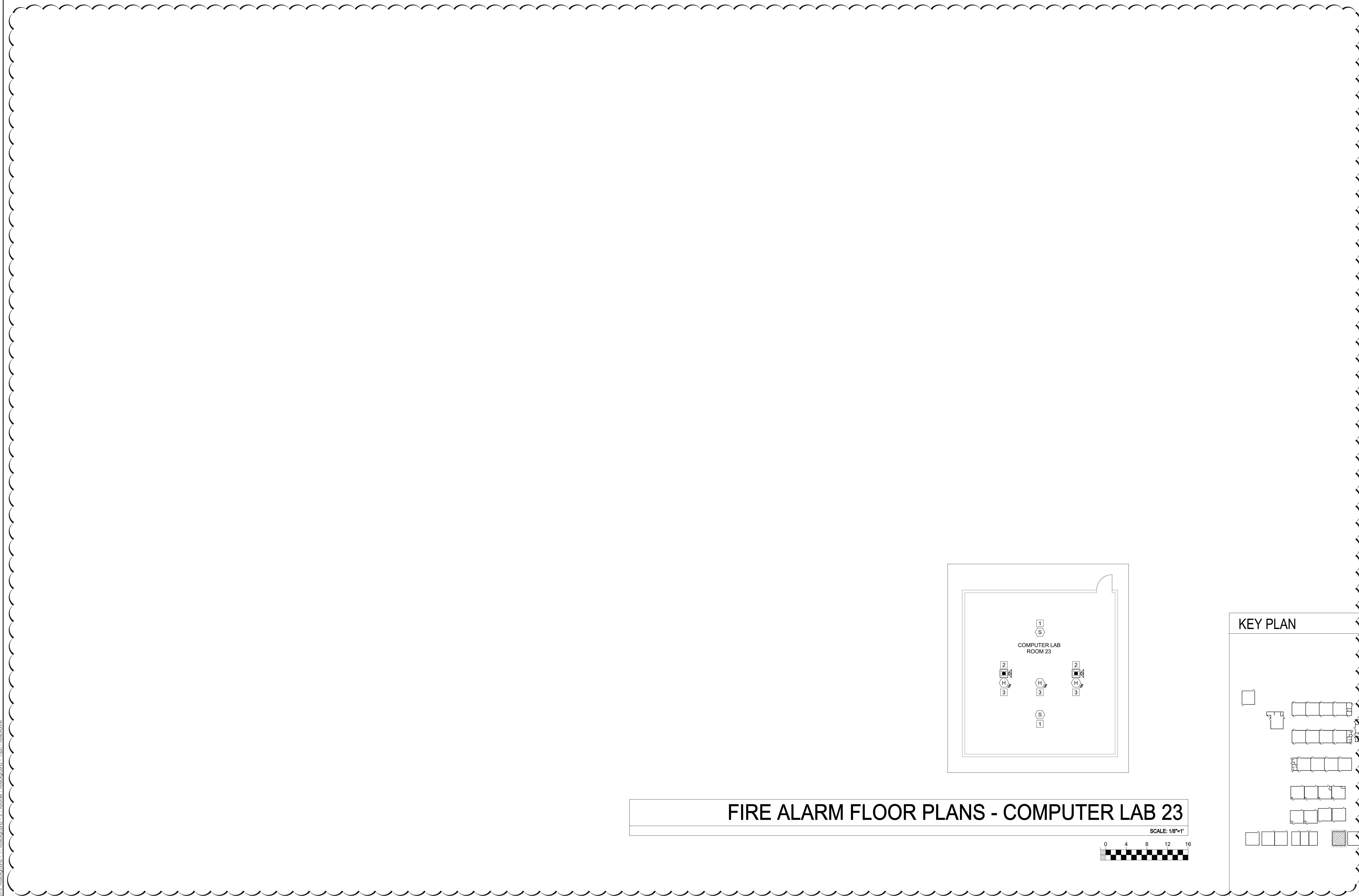
SYMBOL	DESCRIPTION	MANUFACTURER	PART NUMBER	NOTES / DETAIL REFERENCES
(S)	(E) CEILING MOUNTED SMOKE DETECTOR	EXISTING	EXISTING	N/A
(K)	(E) CEILING MOUNTED SPEAKER/STROBE	EXISTING	EXISTING	N/A
(H)	(N) ATTIC MOUNTED HEAT DETECTOR	SYSTEM SENSOR	5602	N/A

**GENERAL NOTES:**

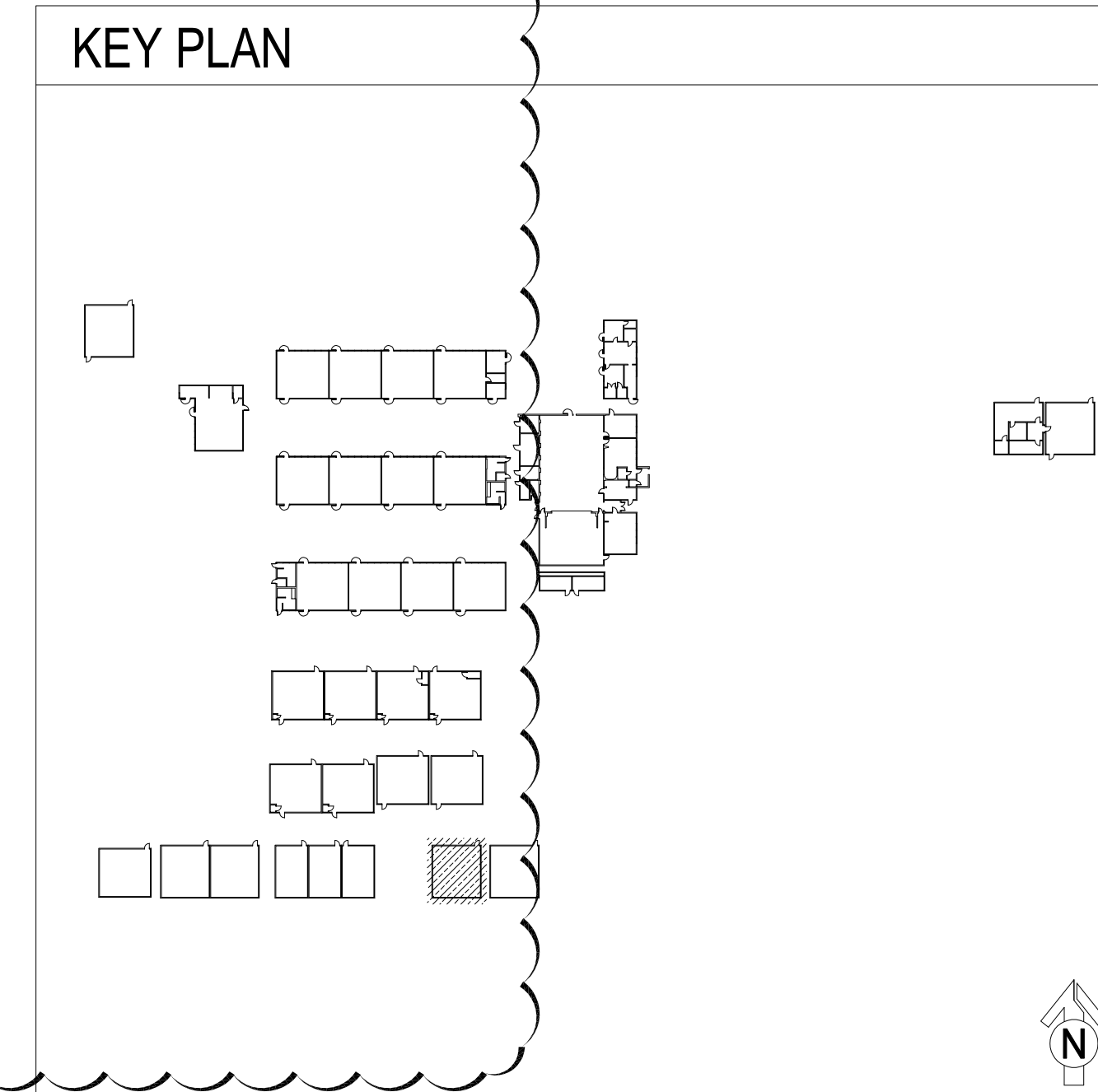
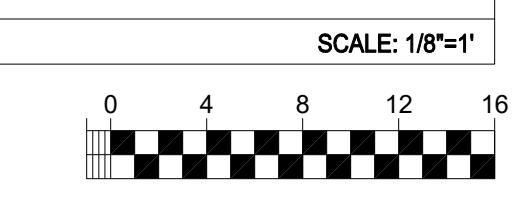
- REMOVE DEVICES AND PRESERVE FOR REINSTALL.
- VERIFY ADDRESSING WITH DISTRICT PRIOR TO REINSTALL.

**SHEET NOTES:**

- REMOVE AND REINSTALL SMOKE DETECTOR.
- REMOVE AND REINSTALL SPEAKER/STROBE.
- INSTALL HEAT DETECTOR ON ROOF DECK ABOVE T-BAR CEILING (WHEN REQUIRED SET TO NEXT AVAILABLE ADDRESS).



## FIRE ALARM FLOOR PLANS - COMPUTER LAB 23



**KMM SERVICES, INC**  
TECHNOLOGY & FIRE LIFE SAFETY  
5433 El Camino Ave. Suite 5  
Carmichael, CA 95608  
Office: (916) 359-4000 www.kmm-services.com



Copyright © 2023  
These drawings and specifications and the ideas, designs and arrangements represented thereby are and shall remain the property of KMM Services, Inc. and no part thereof shall be copied, disclosed to others, or used in connection with any other work or project other than the specific project for which they have been prepared and developed without the written consent of KMM Services, Inc. Visual contact with these drawings or specifications shall constitute conclusive evidence of these restrictions.

IF DRAWING IS NOT 30"x42" IT IS A REDUCED PRINT

**SHEET REVISIONS**

DELTA	DESCRIPTION	DATE
ADDENDUM #02		2023-04-10

**SITE KEY PLAN**

**PROJECT**  
SACRAMENTO CITY USD  
CLAYTON B. WIRE ES  
TECHNOLOGY NETWORK  
INFRA. UPGRADE  
5100 EL PASO AVE.  
SACRAMENTO, CA. 95824

**SHEET TITLE**  
FIRE ALARM  
FLOOR PLANS  
- COMPUTER LAB 23

**DRAWING STATUS**  
BID SET

PROJECT NO.	-
CONTRACT NO.	0040-461-2
DESIGNED BY:	RK/CC
CHECKED BY:	JG
ISSUE DATE:	2023-03-16
WORKING DATE:	2023-04-07

**REVISION**

SHEET **FA200**

Login Name: goodr  
 Plot Date: April 07, 2023 - 2:43 pm  
 Plot Path: \\s01v01\plotters\plot\2023\04\07\2023-04-07-15:43:00 - Plot Data.dwg  
 User: kmm\goodr - 11/28/2022 10:58:58 AM