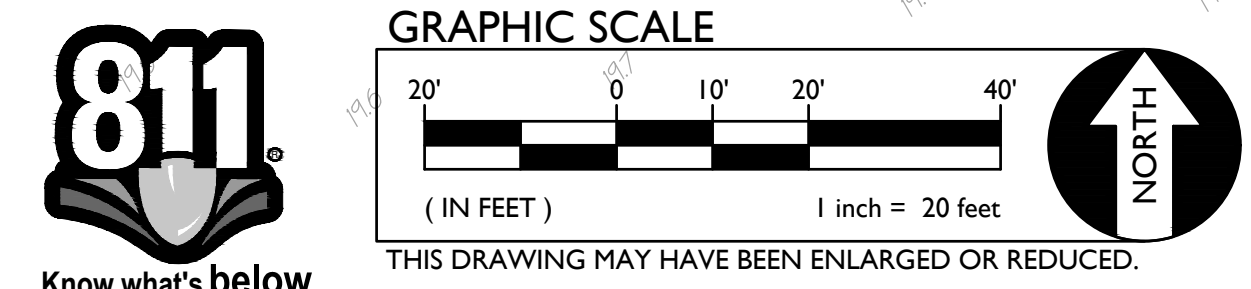


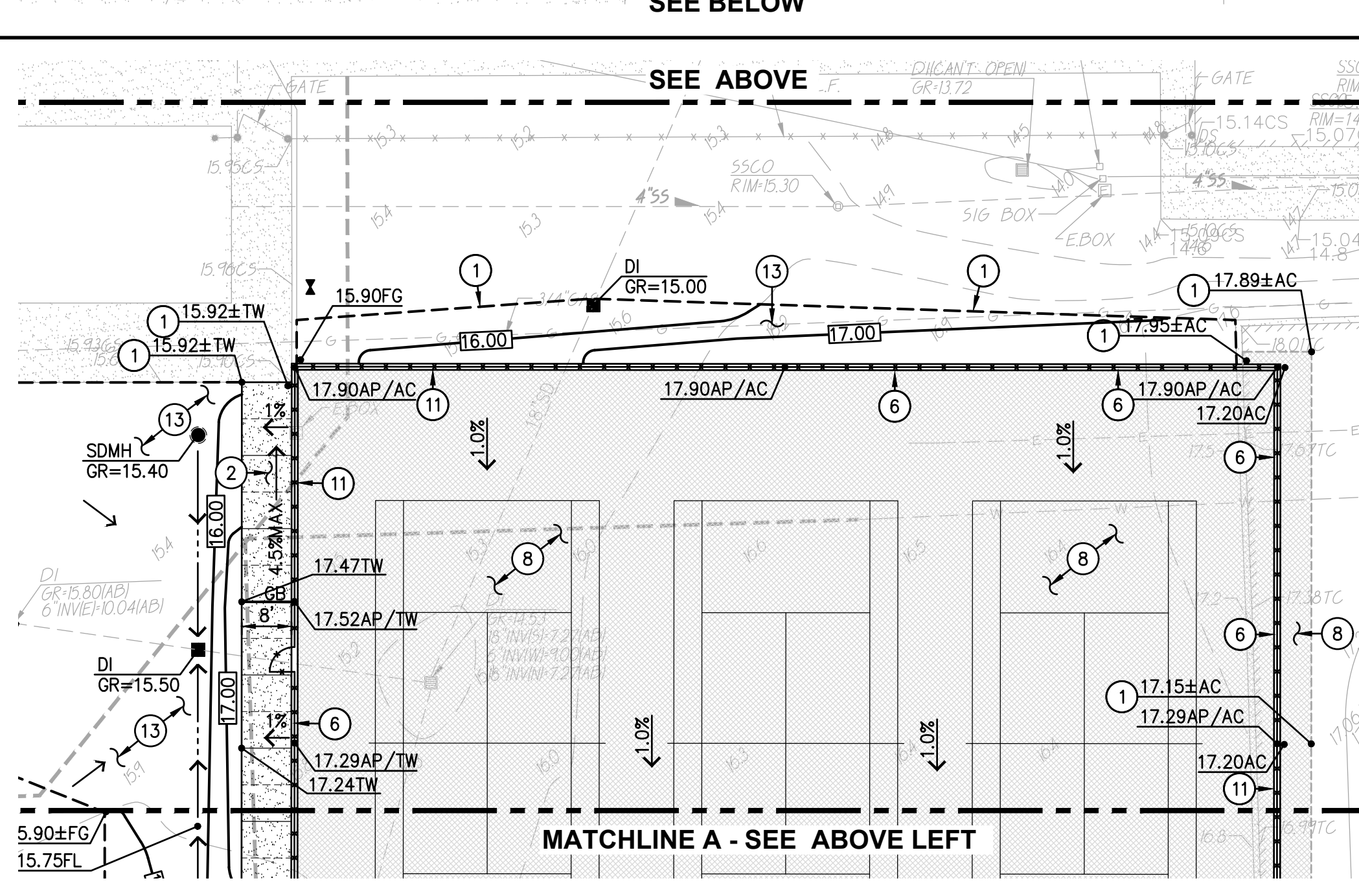
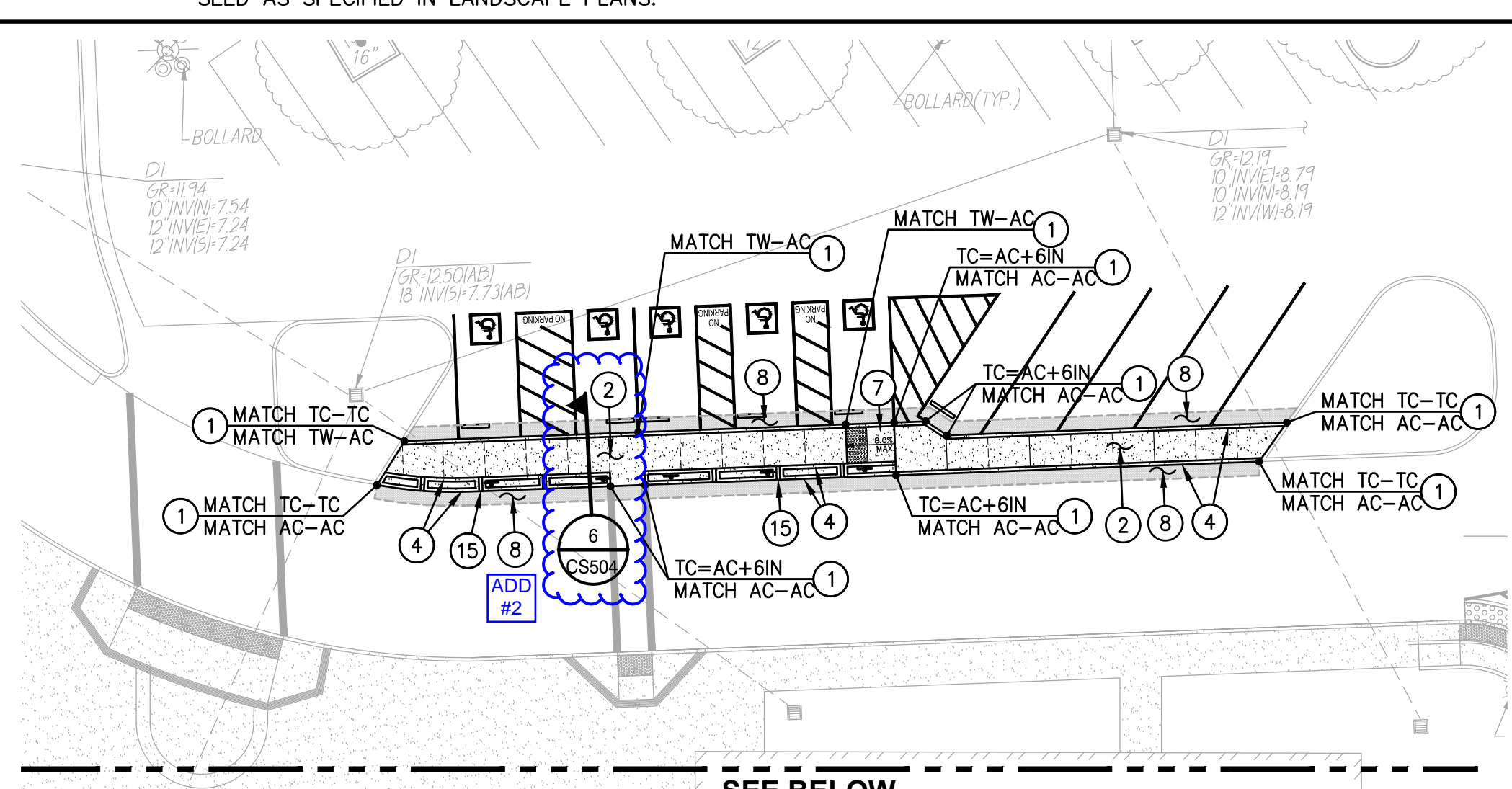
PAVEMENT SLOPES
 ALL PAVING SURFACES SHALL BE CONSTRUCTED IN ACCORDANCE WITH THE GENERAL PAVING SURFACE NOTES ON SHEET C101, CLARIFIED AS FOLLOWS:
 • CONCRETE FLATWORK - ALL - PER GENERAL PAVING SURFACE NOTES ON SHEET C101
 • ASPHALT PAVING, CROSSWALK - PER GENERAL PAVING SURFACE NOTES ON SHEET C101
 • ASPHALT PAVING, ACCESSIBLE PARKING & LOADING - 1.8% MAX ANY DIRECTION.
 • ASPHALT PAVING, ACCESSIBLE LOADING VEHICLE SPACE - 1.8% MAX ANY DIRECTION.
 • ASPHALT PAVING, NORMAL PARKING SPACES - 4.0% MAX ANY DIRECTION.
 • ASPHALT PAVING, PARKING DRIVE ISLES - 4.0% MAX ANY DIRECTION.
 • ASPHALT PAVING, PARKING ENTRANCE AND EXIT - 4.0% CROSS, 7.0% RUNNING.
 CONSTRUCTION TOLERANCES HAVE BEEN FACTORED INTO THE DESIGN, HOWEVER, CONTRACTOR SHALL FIELD CHECK FORMS AS THEY ARE CONSTRUCTED, WHEN THEY ARE COMPLETE, AND ALSO PRIOR TO POURING.



811
 Know what's below.
 Call before you dig.

- LEGEND**
- 1. MATCH EXISTING GRADE/ELEVATION, WHEN MATCHING NEW SLABS TO EXISTING DOWEL SLABS PER THE DETAIL PROVIDED. DOWEL SPACING SHALL MATCH SLAB REINFORCING SPACING.
 - 2. PLACE CONCRETE PAVING PER THE TYPICAL DETAILS PROVIDED. REFER TO PAVING PLAN FOR SECTIONS. REFER TO SPECIFICATIONS SECTION 31 00 00 FOR SUBGRADE PREPARATION, SECTION 32 16 00 FOR CONCRETE PAVING.
 - 3. PROVIDE CONCRETE VALLEY GUTTER PER THE DETAIL PROVIDED.
 - 4. CONSTRUCT CONCRETE CURB PER THE DETAIL PROVIDED.
 - 5. CONSTRUCT CONCRETE RETAINING CURB PER THE DETAIL PROVIDED.
 - 6. CONSTRUCT 12" WIDE CONCRETE APRON WITH FENCING PER THE DETAIL PROVIDED. SEE ARCH. AND LANDSCAPE PLANS FOR NEW FENCING.
 - 7. CONSTRUCT TYPE 1 ACCESSIBLE CURB RAMP PER THE DETAIL PROVIDED.
 - 8. ASPHALT PAVING. REFER TO PAVING PLAN FOR SECTIONS. REFER TO SPECIFICATIONS SECTION 32 12 00 FOR MATERIALS AND CONSTRUCTION. REFER TO SECTION 31 00 00 FOR SUBGRADE PREPARATION.
 - 9. CONSTRUCT FLUSH CONCRETE CURB/EDGE PER THE DETAIL PROVIDED.
 - 10. GRADE AND CONSTRUCT UNIFORM DRAINAGE SWALE IN FINISHED GRADE. RUNNING SLOPE SHALL BE NO LESS THAN 0.75%, SIDE SLOPE SHALL BE NO GREATER THAN 5H:1V. AFTER SWALES ARE GRADED, CONTRACTOR TO ENSURE LANDSCAPER DOES NOT ALTER, BLOCK OR OTHERWISE CHANGE SWALE IN A WAY THAT WOULD STOP GRADE.
 - 11. CONSTRUCT 12" WIDE RAISED CONCRETE APRON AT NEW OR EXISTING FENCING PER THE DETAIL PROVIDED. SEE ARCH. AND LANDSCAPE PLANS FOR FENCING.
 - 12. PROVIDE TOPSOIL FOR NEW PLANTING, SEE PAVING PLAN AND LANDSCAPE PLANS FOR NEW PLANTING/SURFACING. SEE ALSO SPECIFICATION SECTIONS 31 00 00 AND 32 90 00.
 - 13. PATCH BACK EXISTING LANDSCAPING ALONG EDGES OF WORK AND AREAS IDENTIFIED. MATCH EXISTING CONDITIONS. IF NO EXISTING LANDSCAPING PRESENT, PROVIDED EROSION HYDROSEED AT MINIMUM. SEE LANDSCAPE PLANS AND SPECIFICATION SECTIONS 31 00 00 AND 32 90 00.
 - 14. REPLACE EXISTING UTILITY BOX WITH NEW TRAFFIC RATED BOX SET AT PROPOSED FINISHED GRADE. BOX SIZE SHALL MEET OR EXISTING EXISTING VAULT SIZE. APPROVED BOXES SHALL BE JENSEN HT1017, HT1324, HT1130, HT1248 OR HT1048, OR APPROVED EQUAL. SEE ELECTRICAL PLANS FOR ADDITIONAL INFORMATION.
 - 15. CONSTRUCT 6" WIDE NOTCH IN 24" WIDE MEDIAN. NOTCHES SHALL BE FLUSH WITH PAVING TO ALLOW DRAINAGE AND SHALL BE AT 7' O.C. MAX
 - 16. CONSTRUCT CONCRETE TRENCH DRAIN WITH FENCE APRON PER THE DETAIL PROVIDED.
 - 17. CONSTRUCT CONCRETE STAIRWAY WITH EDGE CURBS. REFER TO LANDSCAPE DETAILS.
 - 18. CONSTRUCT 6" WIDE CONCRETE PLANTING EDGE CURB PER THE DETAIL PROVIDED.
 - 19. CONSTRUCT CONCRETE RETAINING CURB PER THE DETAIL PROVIDED.
 - 20. CONSTRUCT CONCRETE MATERIAL STORAGE ENCLOSURE PER THE DETAIL PROVIDED.
 - 21. SEE PAVING PLAN FOR NEW SURFACING. FINISH GRADE SHALL MATCH THE EXISTING AC FINISHED GRADE.
 - 22. FOLLOWING LAWN REMOVAL, GRADE TO SMOOTH AND PLANE EXISTING GRADE TO A UNIFORM FINISH. FILL AND PROVIDE NEW TOPSOIL WHERE NEEDED, THEN AMEND AND PLACE NEW SOD OR SEED AS SPECIFIED IN LANDSCAPE PLANS.

23. NEW SYNTHETIC TURF AND BASE. SEE LANDSCAPE PLANS AND SPECIFICATIONS.
 24. CONSTRUCT 12" WIDE CONCRETE APRON WITH SYNTHETIC TURF NAILER PER THE DETAIL PROVIDED.



LIONAKIS

2025 Ninth Street
 Sacramento, CA 95818
 P 916.558.1900
 www.lionakis.com



WC
 WARREN CONSULTING ENGINEERS, INC.
 1117 WINDFIELD WAY, SUITE 110
 EL CERRILLO HILLS, CA 94530 | (916) 985-1870

PROJECT
 LUTHER BURBANK HIGH SCHOOL
 ATHLETIC FIELDS RENOVATION

3500 FLORIN ROAD
 SACRAMENTO, CA 95823

CLIENT
 SACRAMENTO CITY UNIFIED SCHOOL DISTRICT
 5735 47TH AVENUE, SACRAMENTO, CA 95824

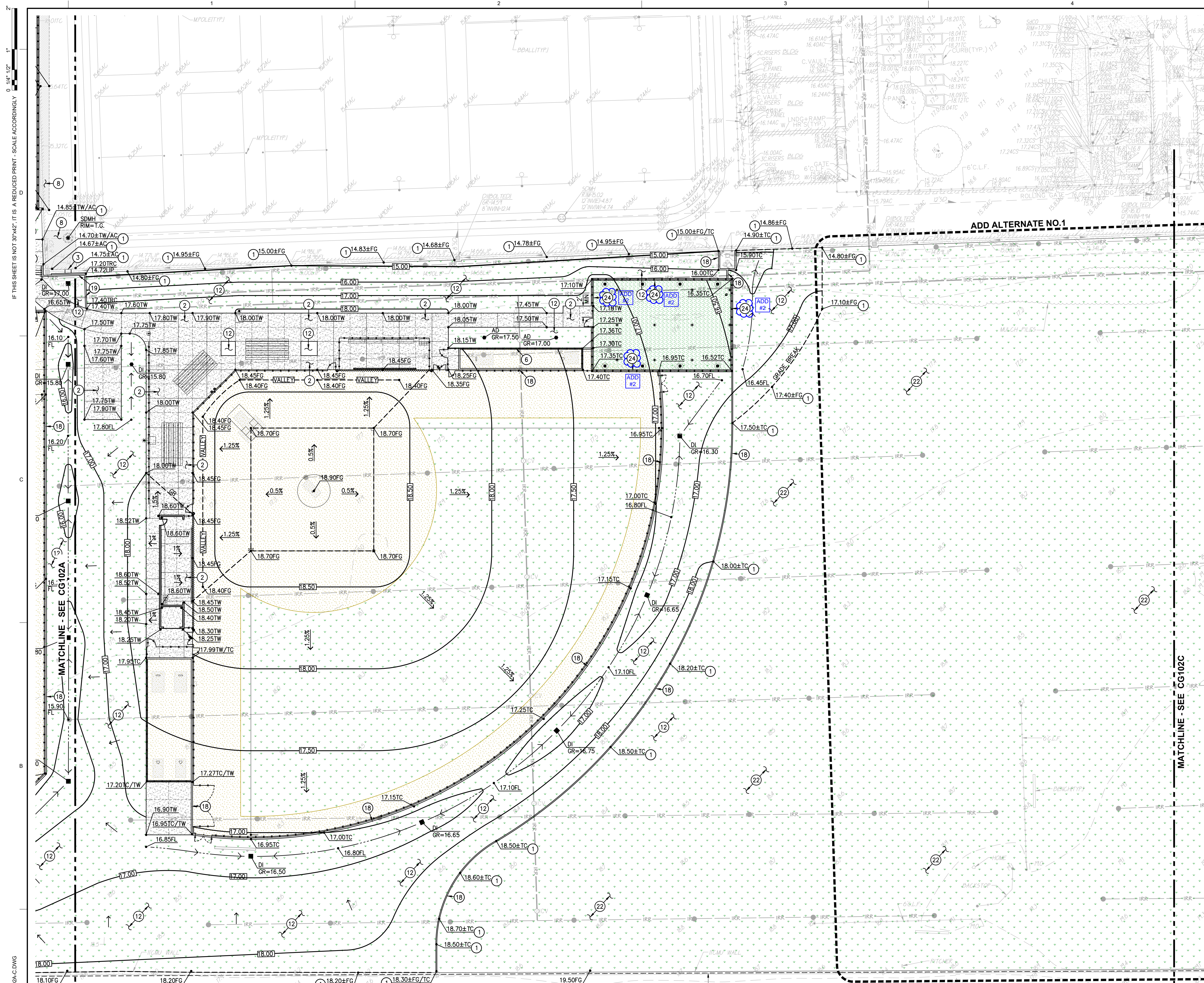
ISSUED

MARK	DATE	DESCRIPTION
-	8.10.2023	DSA SUBMITTAL
-	10.16.2023	DSA BACKCHECK

MANAGEMENT
 LIONAKIS PROJECT NO: 023041
 DSA APPLICATION NO: 02-121593
 CLIENT PROJECT NO: #####
 COPYRIGHT: LIONAKIS 2017

TITLE
 GRADING PLAN

SHEET
 CG102A



PAVEMENT SLOPES
 ALL PAVING SURFACES SHALL BE CONSTRUCTED IN ACCORDANCE WITH THE GENERAL PAVING SURFACE NOTES ON SHEET C101, CLARIFIED AS FOLLOWS:
 • CONCRETE FLATWORK - ALL - PER GENERAL PAVING SURFACE NOTES ON SHEET C101.
 • ASPHALT PAVING, CROSSWALK - PER GENERAL PAVING SURFACE NOTES ON SHEET C101.
 • ASPHALT PAVING, ACCESSIBLE PARKING & LOADING - 1.8% MAX ANY DIRECTION.
 • ASPHALT PAVING, ACCESSIBLE VEHICLE SPACE - 1.8% MAX ANY DIRECTION.
 • ASPHALT PAVING, NORMAL PARKING SPACES - 4.0% MAX ANY DIRECTION.
 • ASPHALT PAVING, PARKING DRIVE ISLES - 4.0% MAX ANY DIRECTION.
 • ASPHALT PAVING, PARKING ENTRANCE AND EXIT - 4.0% CROSS, 7.0% RUNNING.
 CONSTRUCTION TOLERANCES HAVE BEEN FACTORED INTO THE DESIGN, HOWEVER, CONTRACTOR SHALL FIELD CHECK FORMS AS THEY ARE CONSTRUCTED, WHEN THEY ARE COMPLETE, AND ALSO PRIOR TO POURING.

LEGEND **CONSTRUCTION NOTES**
 NOT ALL NOTES MAY BE USED ON THIS SHEET

- MATCH EXISTING GRADE/ELEVATION. WHEN MATCHING NEW SLABS TO EXISTING, DOWEL SLABS PER THE DETAIL PROVIDED. DOWEL SPACING SHALL MATCH SLAB REINFORCING SPACING. (3) (CS501)
- CONSTRUCT CONCRETE PAVING PER THE TYPICAL DETAILS PROVIDED. REFER TO PAVING PLAN FOR SECTIONS. REFER TO SPECIFICATIONS SECTION 31 00 00 FOR SUBGRADE PREPARATION, SECTION 32 16 00 FOR CONCRETE PAVING. (1) (2) (3) (CS501) (CS501)
- CONSTRUCT CONCRETE VALLEY GUTTER PER THE DETAIL PROVIDED. (12) (CS501)
- CONSTRUCT CONCRETE CURB PER THE DETAIL PROVIDED. (5) (CS501)
- CONSTRUCT CONCRETE RETAINING CURB PER THE DETAIL PROVIDED. (7) (CS501)
- CONSTRUCT 12" WIDE CONCRETE APRON WITH FENCING PER THE DETAIL PROVIDED. SEE ARCH. AND LANDSCAPE PLANS FOR NEW FENCING. (14) (CS501)
- CONSTRUCT TYPE 1 ACCESSIBLE CURB RAMP PER THE DETAIL PROVIDED. (16) (CS501)
- ASPHALT PAVING. REFER TO PAVING PLAN FOR SECTIONS. REFER TO SPECIFICATIONS SECTION 32 12 00 FOR MATERIALS AND CONSTRUCTION. REFER TO SECTION 31 00 00 FOR SUBGRADE PREPARATION. (8) (CS501)
- CONSTRUCT FLUSH CONCRETE CURB/EDGE PER THE DETAIL PROVIDED. (8) (CS501)
- GRADE AND CONSTRUCT UNIFORM DRAINAGE SWALE IN FINISHED GRADE. RUNNING SLOPE SHALL BE NO LESS THAN 0.75%. SIDE SLOPE SHALL BE NO GREATER THAN 5H:1V. AFTER SWALES ARE GRADED, CONTRACTOR TO ENSURE LANDSCAPER DOES NOT ALTER, BLOCK OR OTHERWISE CHANGE SWALE IN A WAY THAT WOULD STOP FLOW. (17) (CS501)
- CONSTRUCT 12" WIDE RAISED CONCRETE APRON AT NEW OR EXISTING FENCING PER THE DETAIL PROVIDED. SEE ARCH. AND LANDSCAPE PLANS FOR FENCING. (17) (CS501)
- PROVIDE TOPSOIL FOR NEW PLANTING. SEE PAVING PLAN AND LANDSCAPE PLANS FOR NEW PLANTING/SURFACING. SEE ALSO SPECIFICATION SECTIONS 31 00 00 AND 32 90 00. (11) (CS502)
- PATCH BACK EXISTING LANDSCAPING ALONG EDGES OF WORK AND AREAS IDENTIFIED. MATCH EXISTING CONDITIONS. IF NO EXISTING LANDSCAPING PRESENT, PROVIDED EROSION HYDROSEED AT MINIMUM. SEE LANDSCAPE PLANS AND SPECIFICATION SECTIONS 31 00 00 AND 32 90 00. (9) (CS501)
- REPLACE EXISTING UTILITY BOX WITH NEW TRAFFIC RATED BOX SET AT PROPOSED FINISHED GRADE. BOX SIZE SHALL MEET OR EXISTING EXISTING VAULT SIZE. APPROVED BOXES SHALL BE JENSEN HT1017, HT1324, HT1730, HT2436 OR HT3048, OR APPROVED EQUAL. SEE ELECTRICAL PLANS FOR ADDITIONAL INFORMATION. (11) (CS502)
- CONSTRUCT 6" WIDE NOTCH IN 24" WIDE MEDIAN. NOTCHES SHALL BE FLUSH WITH PAVING TO ALLOW DRAINAGE AND SHALL BE AT 7' O.C. MAX. (9) (CS501)
- CONSTRUCT CONCRETE TRENCH DRAIN WITH FENCE APRON PER THE DETAIL PROVIDED. (7) (CS501)
- CONSTRUCT CONCRETE STAIRWAY WITH EDGE CURBS. REFER TO LANDSCAPE DETAILS. (18) (CS501)
- CONSTRUCT 6" WIDE CONCRETE PLANTING EDGE CURB PER THE DETAIL PROVIDED. (9) (CS501)
- CONSTRUCT CONCRETE RETAINING CURB PER THE DETAIL PROVIDED. (7) (CS501)
- CONSTRUCT CONCRETE MATERIAL STORAGE ENCLOSURE PER THE DETAIL PROVIDED. (18) (CS501)
- SEE PAVING PLAN FOR NEW SURFACING. FINISH GRADE SHALL MATCH THE EXISTING AC FINISHED GRADE. (7) (CS501)
- FOLLOWING LAWN REMOVAL, GRADE TO SMOOTH AND PLANE EXISTING GRADE TO A UNIFORM FINISH. FILL AND PROVIDE NEW TOPSOIL WHERE NEEDED. THEN AMEND AND PLACE NEW SOD OR SEED AS SPECIFIED IN LANDSCAPE PLANS. (7) (CS501)
- CONSTRUCT 12" WIDE CONCRETE APRON WITH SYNTHETIC TURF NAILER PER THE DETAIL PROVIDED. (7) (CS504)

LIONAKIS

2025 Nineteenth Street
 Sacramento, CA 95818
 P 916.558.1900
 www.lionakis.com

CONSULTANT

WC ANTHONY J. TASSANO
 REGISTERED PROFESSIONAL ENGINEER
 No. C74886
 State of California
 01/20/2024

WARREN CONSULTING ENGINEERS, INC.
 1117 WINDFIELD WAY, SUITE 110
 EL CERRILLO HILLS, CA 94530 (916) 965-1870

PROJECT
 LUTHER BURBANK HIGH SCHOOL
 ATHLETIC FIELDS RENOVATION

3500 FLORIN ROAD
 SACRAMENTO, CA 95823

CLIENT
 SACRAMENTO CITY UNIFIED SCHOOL DISTRICT
 5735 47TH AVENUE, SACRAMENTO, CA 95824

ISSUED

MARK	DATE	DESCRIPTION
-	8.10.2023	DSA SUBMITTAL
-	10.16.2023	DSA BACKCHECK

MANAGEMENT

LIONAKIS PROJECT NO:	023041
DSA APPLICATION NO:	02-121593
CLIENT PROJECT NO:	####
COPYRIGHT:	LIONAKIS 2017

TITLE
 GRADING PLAN

SHEET
 CG102B

811
 Know what's below.
 Call before you dig.

GRAPHIC SCALE
 20' 0' 10' 20' 40'
 (IN FEET) 1 inch = 20 feet
 THIS DRAWING MAY HAVE BEEN ENLARGED OR REDUCED.

NORTH

IF THIS SHEET IS NOT 30"x42", IT IS A REDUCED PRINT - SCALE ACCORDINGLY 0' 14" 1/2" 1"

FILE: I:\23-106\CIVIL\DWG\23-106-108-CG102A-C.DWG

PLOT DATE: 1/12/2024 9:54:34 AM

PLOT DATE: 1/12/2024 9:54:34 AM FILENAME: I:\23-106\CIVIL\DWG\23-106-108-CG102A-C.DWG

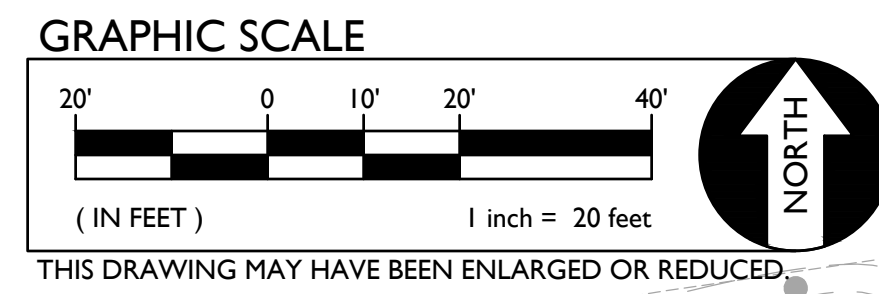
UTILITY VERIFICATION NOTE
PRIOR TO THE START OF CONSTRUCTION, POT HOLE AND VERIFY ALL UTILITY POINTS OF CONNECTION TO EXISTING UTILITIES FOR LOCATION, DEPTH, AND SIZE. IF CONFLICT IS FOUND, CONTACT THE ENGINEER IMMEDIATELY FOR DIRECTION.

MATERIAL TRANSITION NOTE
WHEN TRANSITIONING FROM METALLIC WATER PIPE TO PLASTIC WATER PIPE (3" AND SMALLER) THREADED COUPLERS MAY BE USED BUT FEMALE ENDS MUST BE METALLIC AND MALE ENDS MUST BE PLASTIC THIS IS TRUE FOR VALVES AND OTHER UNIONS AS WELL.

UTILITY INTERRUPTIONS
CONTRACTOR SHALL NOTIFY SCHOOL AT LEAST 72 HOURS IN ADVANCE OF SERVICE SHUT-OFFS. INTERRUPTIONS OF SERVICES SHALL BE LIMITED TO LESS THAN 24 HOURS UNLESS OTHERWISE NEGOTIATED WITH DISTRICT. INTERRUPTIONS OF LONGER DURATIONS SHALL BE PROVIDED WITH TEMPORARY SERVICE CONNECTIONS WHICH ARE THE RESPONSIBILITY OF THE CONTRACTOR.

UNDER NO CIRCUMSTANCES SHALL FIRE PROTECTION SYSTEMS BE INTERRUPTED OVERNIGHT WITHOUT CONTACTING THE LOCAL FIRE AUTHORITY. CONTRACTOR WILL BE RESPONSIBLE FOR ALL REQUIRED "FIRE WATCH" REQUIREMENTS AND ASSOCIATED FEES FROM LOCAL FIRE DEPARTMENT.

PARALLEL LINE WATER MAINS
WHEN RUNNING PARALLEL WATER MAINS IN THE SAME TRENCH, SET WATER MAIN AT LEVELS 12" VERTICALLY SEPARATED TO ALLOW FUTURE CROSSING CONNECTIONS WITHOUT JUMPER PIPES.



MATCHLINE - SEE BELOW

UTILITY VERIFICATION NOTE
PRIOR TO THE START OF CONSTRUCTION, POT HOLE AND VERIFY ALL UTILITY POINTS OF CONNECTION TO EXISTING UTILITIES FOR LOCATION, DEPTH, AND SIZE. IF CONFLICT IS FOUND, CONTACT THE ENGINEER IMMEDIATELY FOR DIRECTION.

7 DRAINAGE CONSTRUCTION NOTES

- NOTE: NOT ALL OF THESE NOTES MAY BE USED ON THIS SHEET
- CONSTRUCT DROP INLET STRUCTURE PER THE DETAIL PROVIDED. (1) (CS502)
 - CONSTRUCT AREA DRAIN PER THE DETAIL PROVIDED. (5) (CS502)
 - CONSTRUCT PLANTER DRAIN PER THE DETAIL PROVIDED. (9) (CS502)
 - CONSTRUCT STORM DRAIN CLEANOUT PER THE DETAIL PROVIDED. (2) (CS502)
 - PROVIDE AND INSTALL 18" STORM DRAIN, PVC SDR-35 OR HDPE SLOPE VARIES PER INVERTS SHOWN, BUT 0.0025 MIN. (0.25%) (3) (CS502)
 - PROVIDE AND INSTALL 12" STORM DRAIN, PVC SDR-35 OR HDPE SLOPE VARIES PER INVERTS SHOWN, BUT 0.0025 MIN. (0.25%) (3) (CS502)
 - PROVIDE AND INSTALL 10" STORM DRAIN, PVC SDR-35 OR HDPE SLOPE VARIES PER INVERTS SHOWN, BUT 0.0035 MIN. (0.35%) (3) (CS502)
 - PROVIDE AND INSTALL 8" STORM DRAIN, PVC SDR-35 OR HDPE SLOPE VARIES PER INVERTS SHOWN, BUT 0.005 MIN. (0.50%) (3) (CS502)
 - PROVIDE AND INSTALL 6" STORM DRAIN, PVC SDR-35. SLOPE VARIES PER INVERTS SHOWN, BUT 0.010 MIN. (1.00%) (3) (CS502)
 - PROVIDE AND INSTALL 4" STORM DRAIN, PVC SDR-35. SLOPE VARIES PER INVERTS SHOWN, BUT 0.0150 MIN. (1.50%) (3) (CS502)
 - CONNECT TO EXISTING STORM DRAIN PIPE OR INLET STRUCTURE AS SHOWN. POT HOLE TO VERIFY LOCATION AND DEPTH PRIOR TO CONSTRUCTION. IF CONFLICT FOUND CONTACT ARCHITECT FOR DIRECTION. PROVIDE ALL FITTINGS AND ADAPTORS TO MAKE CONNECTION. (20) (CS502)
 - CONSTRUCT 4" PERFORATED SUBDRAIN WITH DRAIN ROCK AND FILTER FABRIC BENEATH BALLFIELD CINDERS PER THE DETAIL PROVIDED. (16) (CS502)
 - CONSTRUCT 48" MANHOLE PER THE DETAIL PROVIDED. (11) (CS502)
 - CONSTRUCT TRENCH DRAIN & APRON WITH ACCESSIBLE COVER PER THE DETAIL PROVIDED. (19) (CS502)
 - CONSTRUCT 4" PERFORATED SUBDRAIN WITH DRAIN ROCK AND FILTER FABRIC BENEATH SYNTHETIC TURF PER THE DETAIL PROVIDED. (15) (CS502)

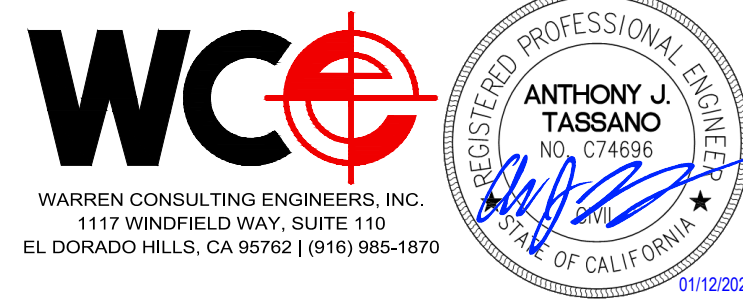
7 DOMESTIC WATER CONSTRUCTION NOTES

- PLACE 3/4" WATER LINE, COPPER TYPE K (HARD), OR APPROVED EQUAL. REFER TO TRENCHING DETAIL PROVIDED. (1) (CS503)
- PLACE 1.0" WATER LINE, COPPER TYPE K (HARD), OR APPROVED EQUAL. REFER TO TRENCHING DETAIL PROVIDED. (1) (CS503)
- PLACE 1.5" WATER LINE, COPPER TYPE K (HARD), OR APPROVED EQUAL. REFER TO TRENCHING DETAIL PROVIDED. (1) (CS503)
- INSTALL WATER VALVE AND TRAFFIC RATED VALVE BOX PER THE DETAIL PROVIDED. (2) (CS503)
- CONNECT TO EXISTING WATER MAIN. POT HOLE TO VERIFY LOCATION, SIZE AND CONDITION PRIOR TO CONSTRUCTION. IF CONFLICT IS FOUND, CONTACT ARCHITECT FOR DIRECTION. (4) (CS503)
- CONSTRUCT DRINKING FOUNTAIN PER THE DETAIL PROVIDED. (3) (CS503)
- CONSTRUCT DRINKING FOUNTAIN DRYWELL PER THE DETAIL PROVIDED. (5) (CS503)
- PLACE 4" WATER LINE, PVC C900, DR 18, OR APPROVED EQUAL. REFER TO TRENCHING AND THRUST BLOCKING PER THE DETAILS PROVIDED. (1) (CS503)
- BENEATH TENNIS COURT, PLACE 4" WATER LINE, PVC C900, DR 14 WITH JOINT RESTRAINTS AT ALL PIPE JOINTS. REFER TO TRENCHING AND THRUST BLOCKING PER THE DETAILS PROVIDED. (5) (CS503)

LIONAKIS

2025 Nineteenth Street
Sacramento, CA 95818
P 916.558.1900
www.lionakis.com

CONSULTANT



SEAL

PROJECT
**LUTHER BURBANK HIGH SCHOOL
ATHLETIC FIELDS RENOVATION**

3500 FLORIN ROAD
SACRAMENTO, CA 95823

CLIENT
SACRAMENTO CITY UNIFIED SCHOOL DISTRICT
5735 47TH AVENUE, SACRAMENTO, CA 95824

ISSUED

MARK	DATE	DESCRIPTION
-	8.10.2023	DSA SUBMITTAL
-	10.16.2023	DSA BACKCHECK

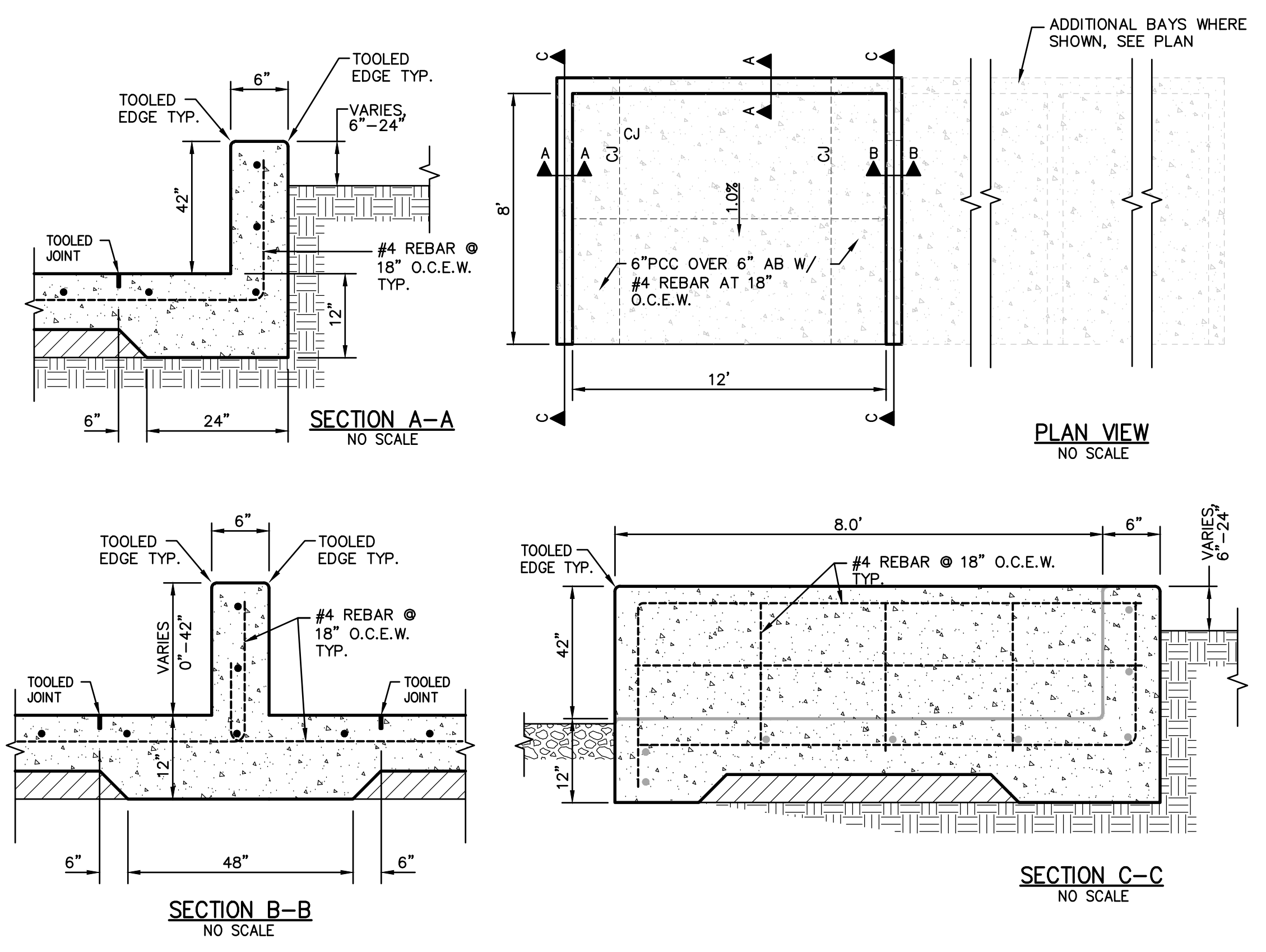
MANAGEMENT

LIONAKIS PROJECT NO:	023041
DSA APPLICATION NO:	02-121593
CLIENT PROJECT NO:	####
COPYRIGHT:	LIONAKIS 2017

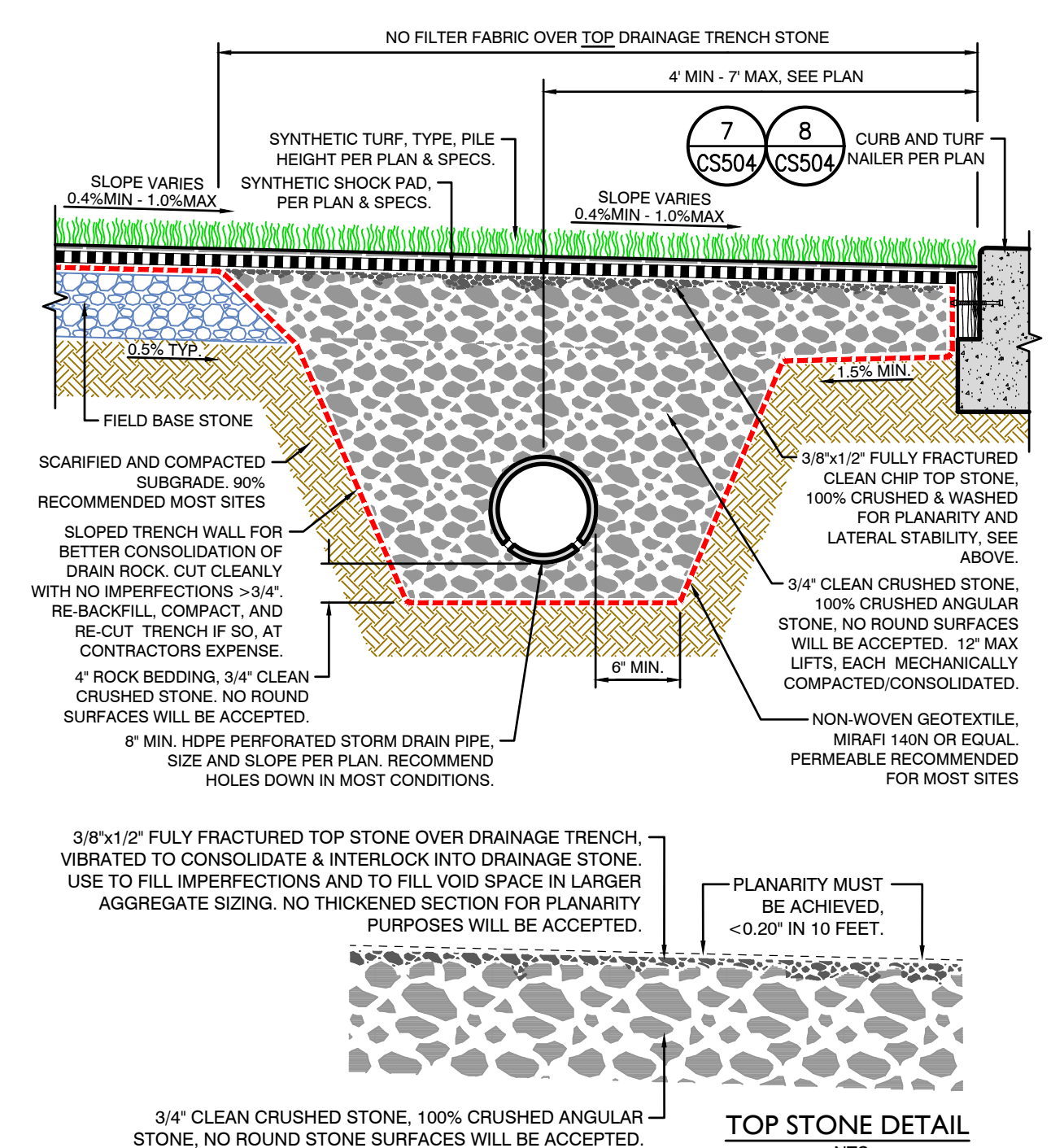
TITLE
**DRAINAGE AND
SEWER PLAN**
AREA A

SHEET
CU101A

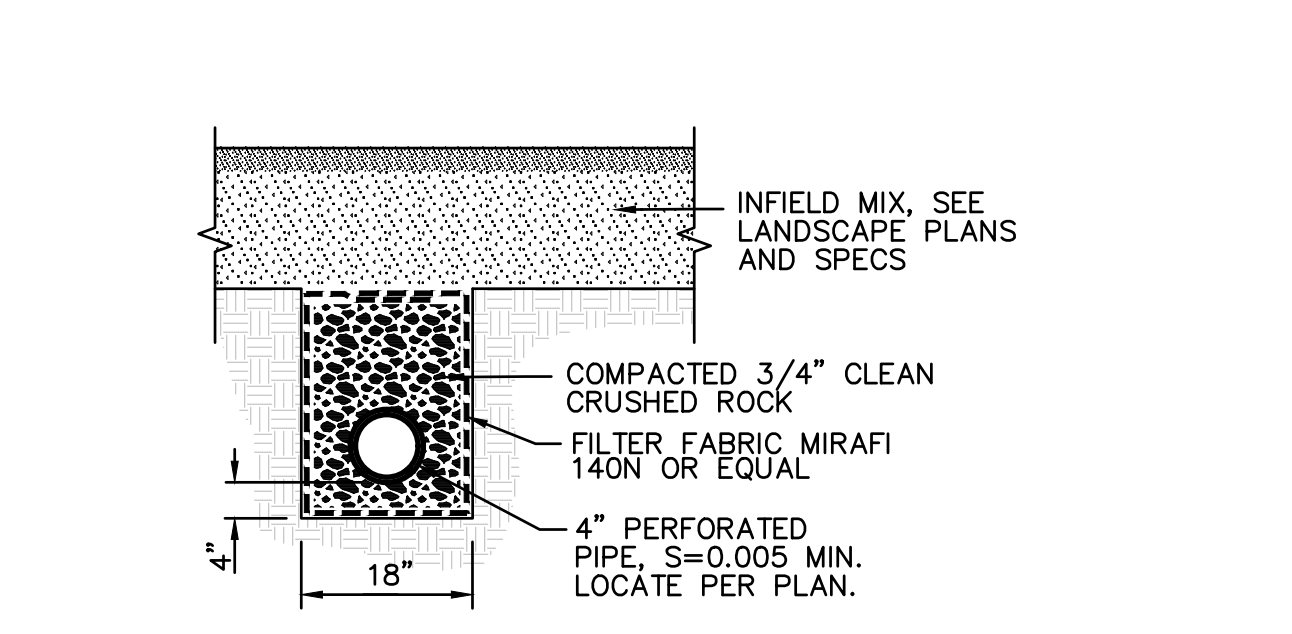
IF THIS SHEET IS NOT 30"x42", IT IS A REDUCED PRINT - SCALE ACCORDINGLY
 FILE: 103-106CIVILDWG23-106-114 - CS501-CS504.DWG
 PLOT DATE: 1/12/2024 9:55:51 AM
 PLOT DATE: 1/12/2024 9:55:51 AM



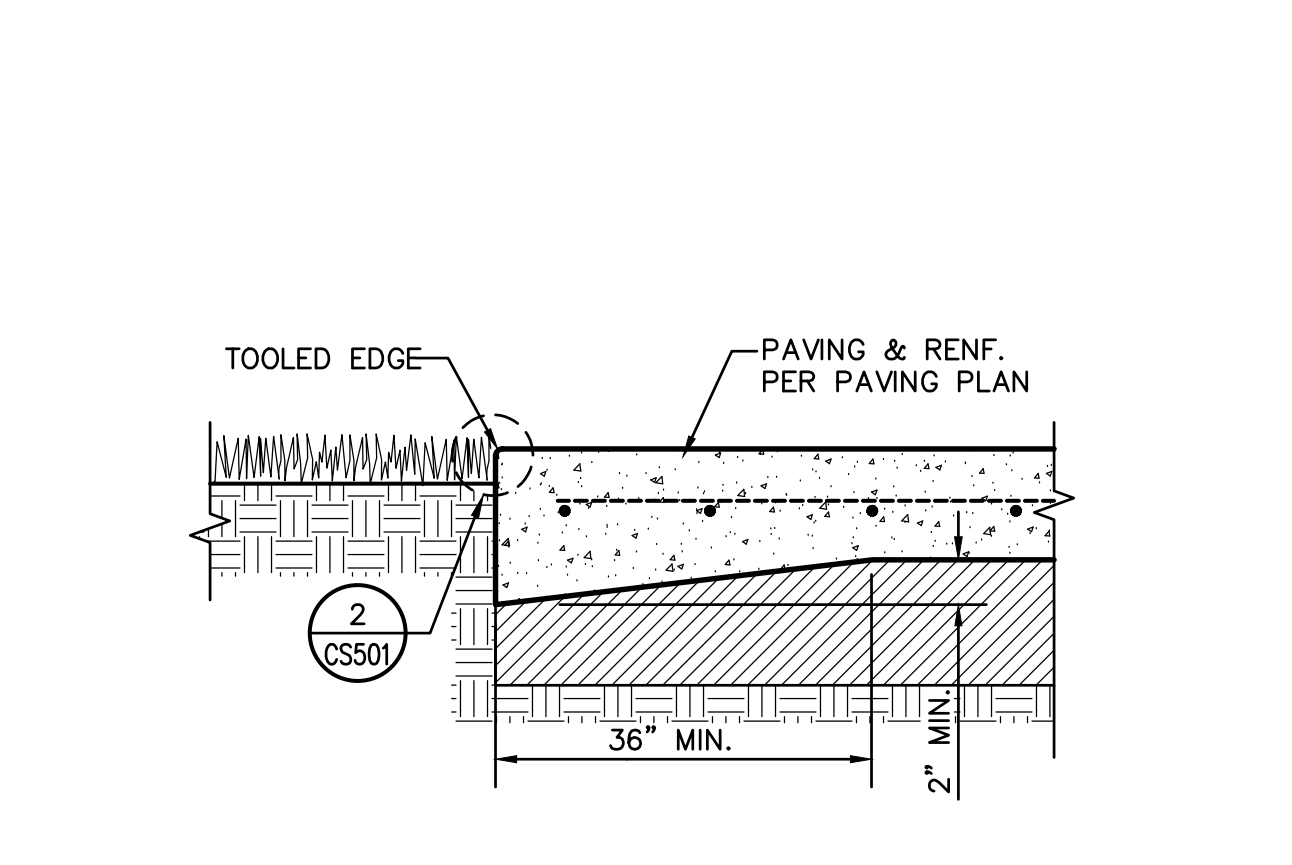
18 MATERIAL STORAGE
CS501 NO SCALE



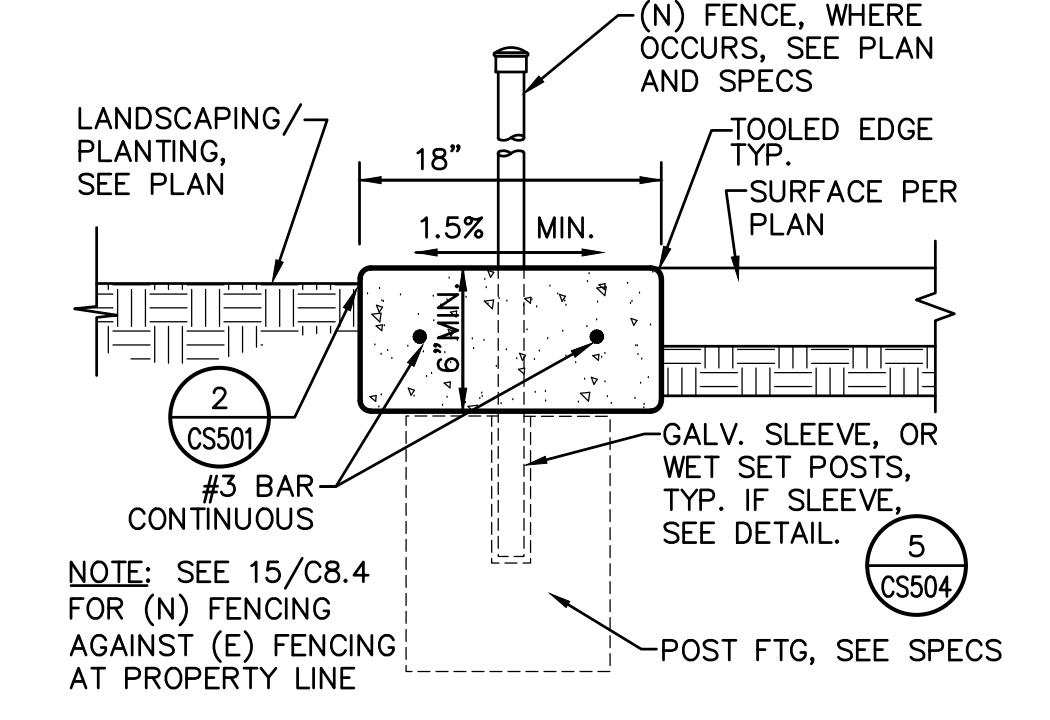
19 SYNTHETIC TURF SUBDRAIN
CS501 NO SCALE



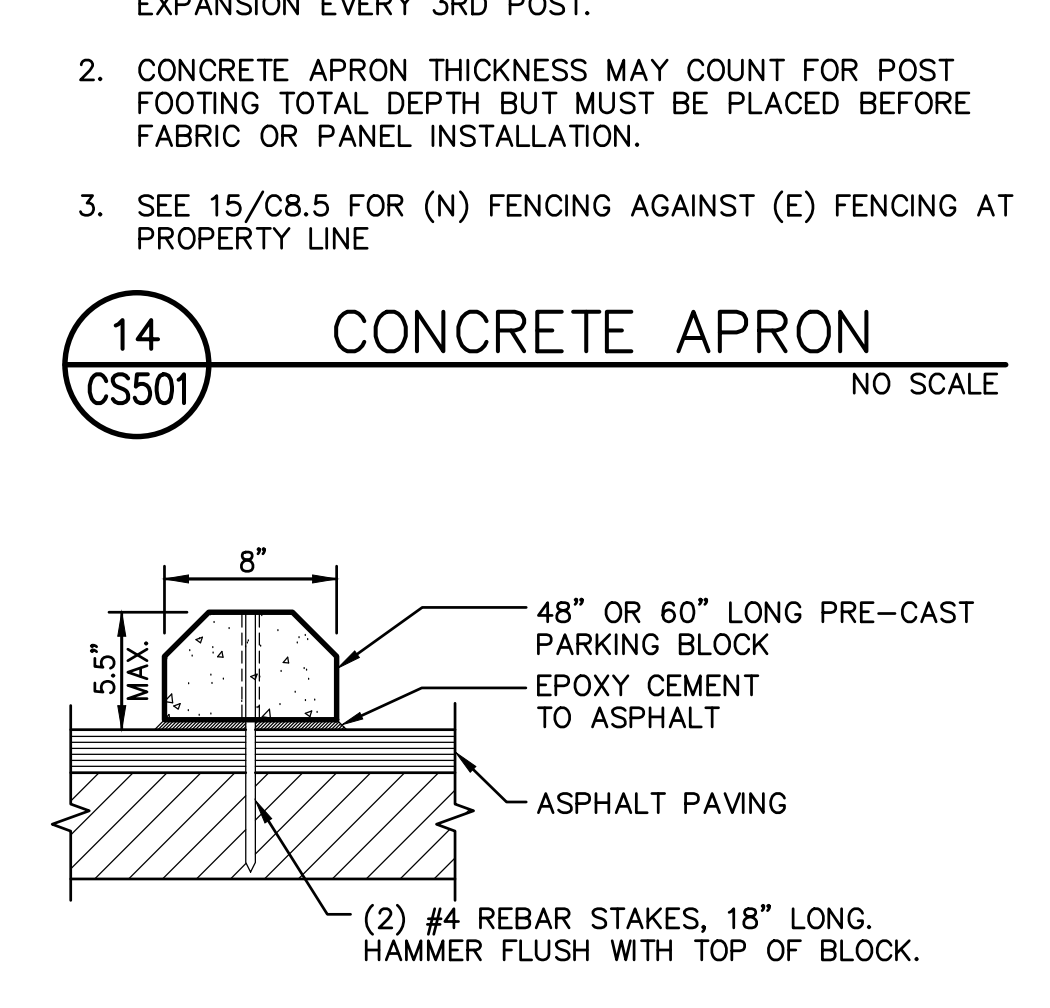
20 INFIELD SUBDRAIN
CS501 NO SCALE



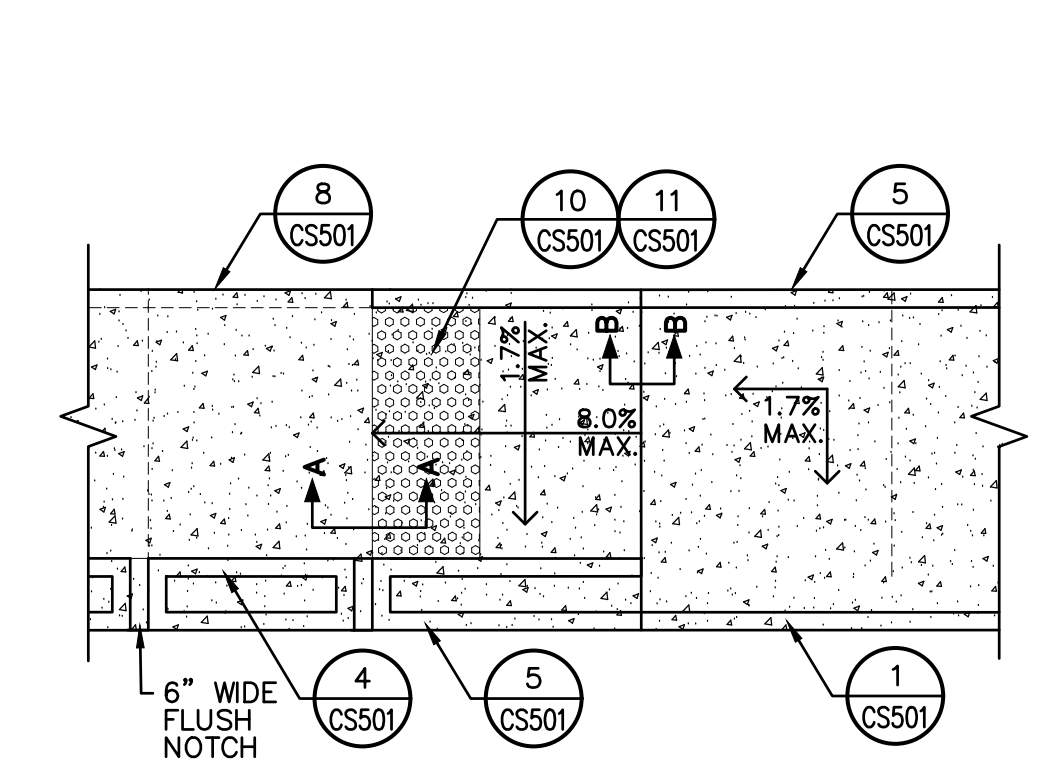
21 THICK CONC. EDGE
CS501 NO SCALE



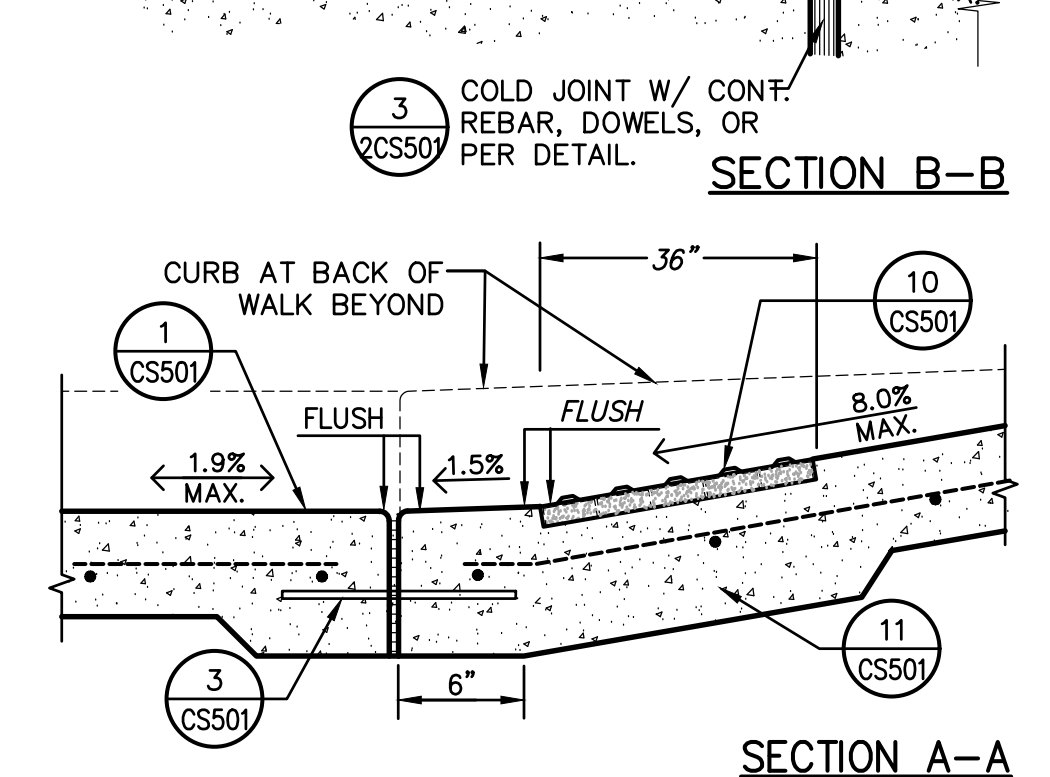
14 CONCRETE APRON
CS501 NO SCALE



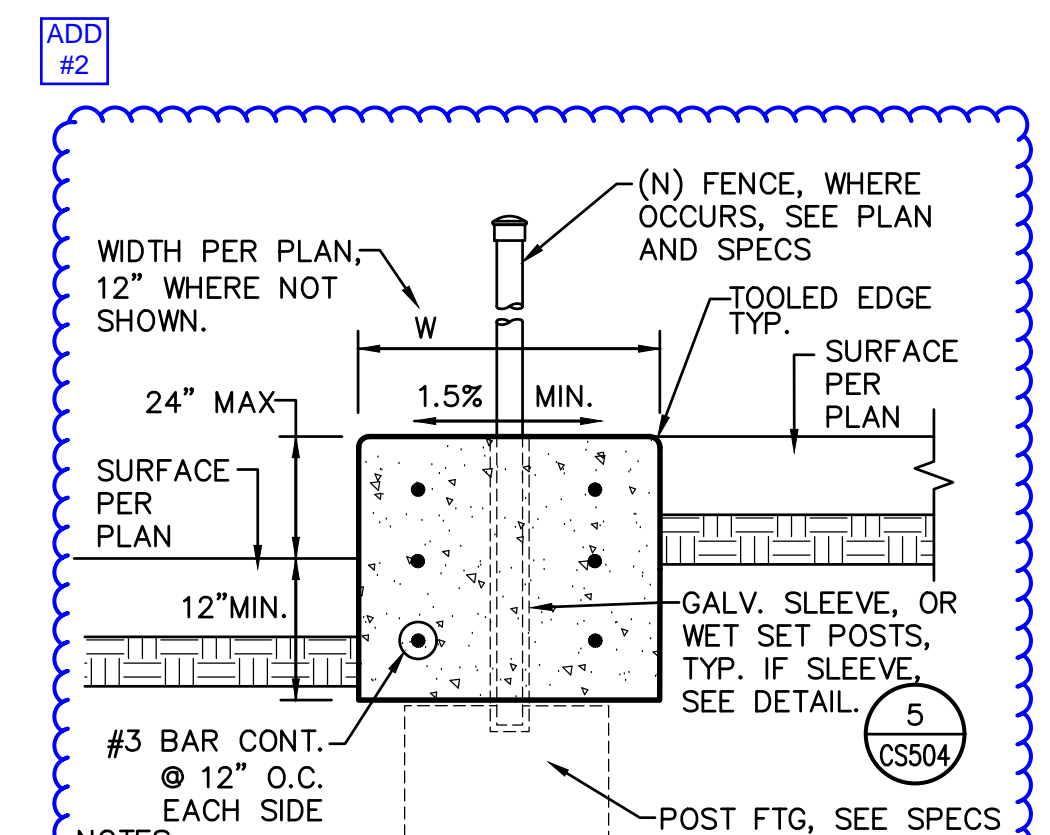
15 CONCRETE WHEEL STOP
CS501 NO SCALE



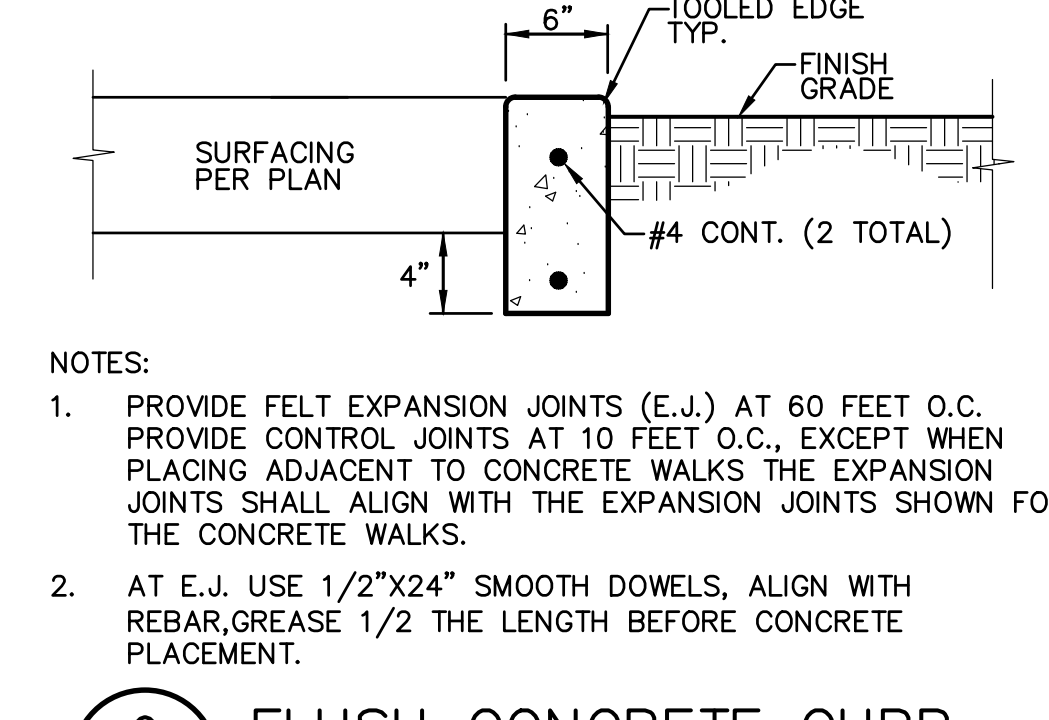
11 SLAB AT TRUNCATED DOMES
CS501 NO SCALE



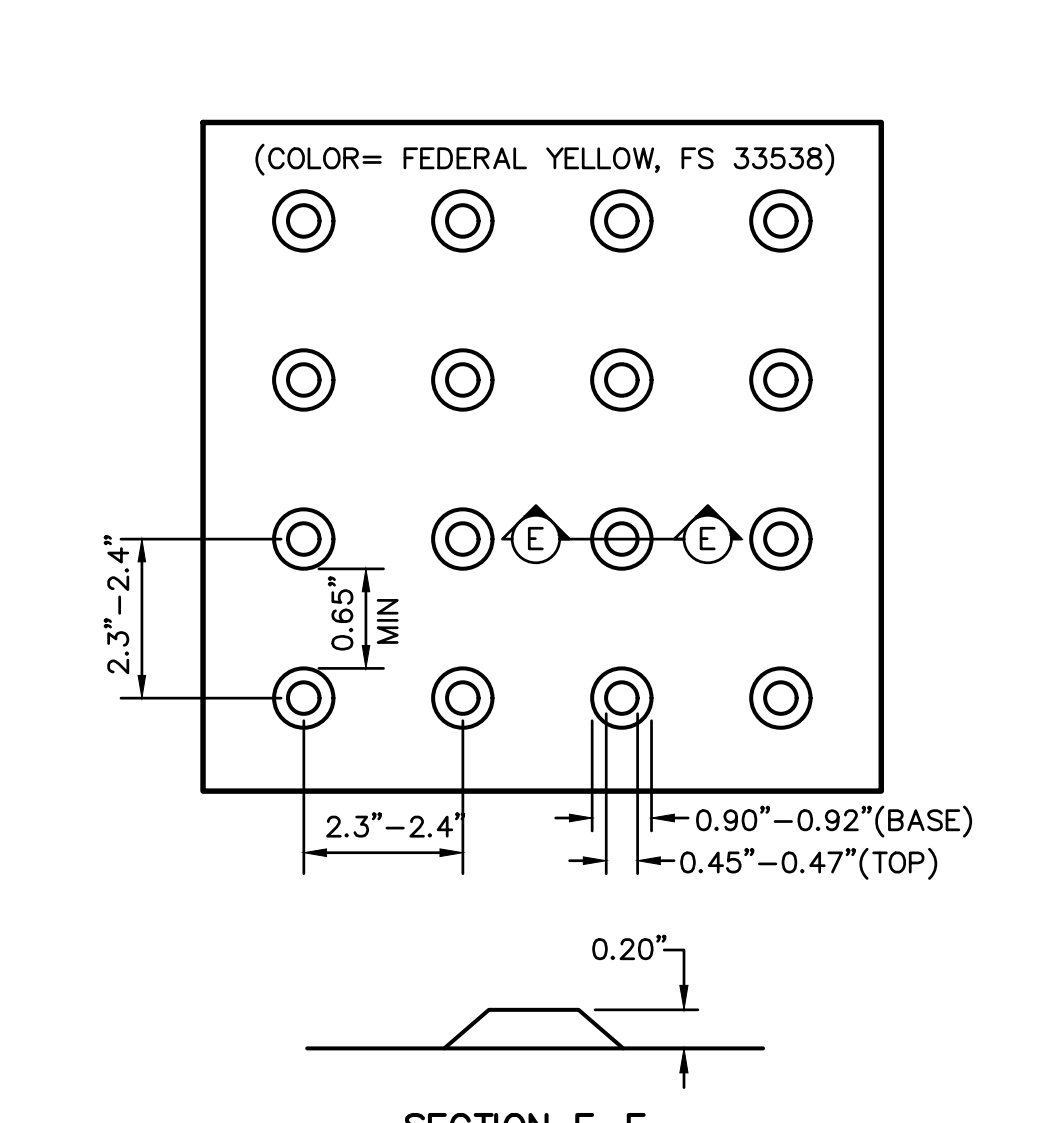
16 CURB RAMP
CS501 NO SCALE



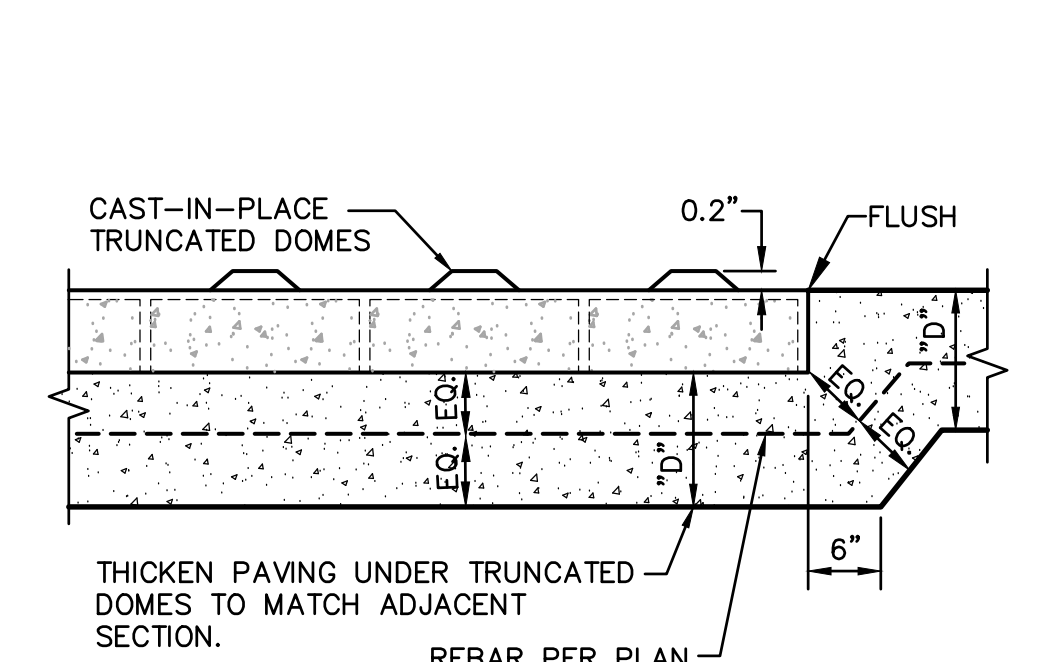
17 RAISED CONCRETE APRON
CS501 NO SCALE



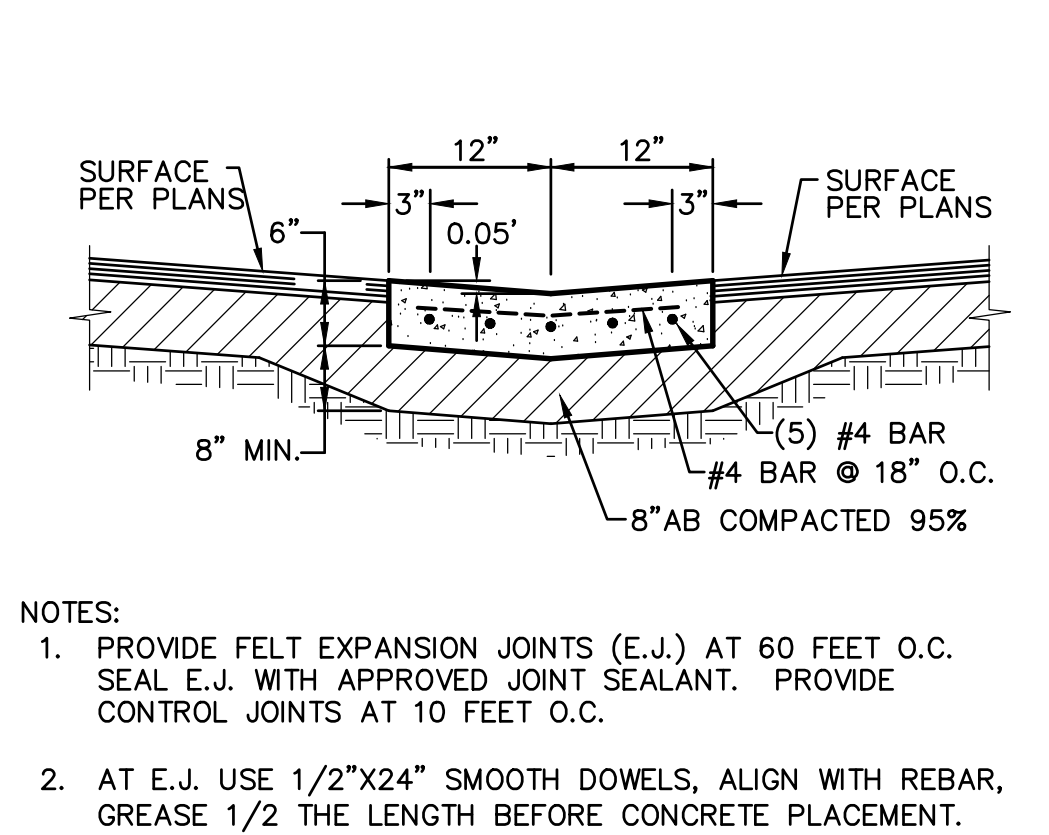
9 FLUSH CONCRETE CURB
CS501 NO SCALE



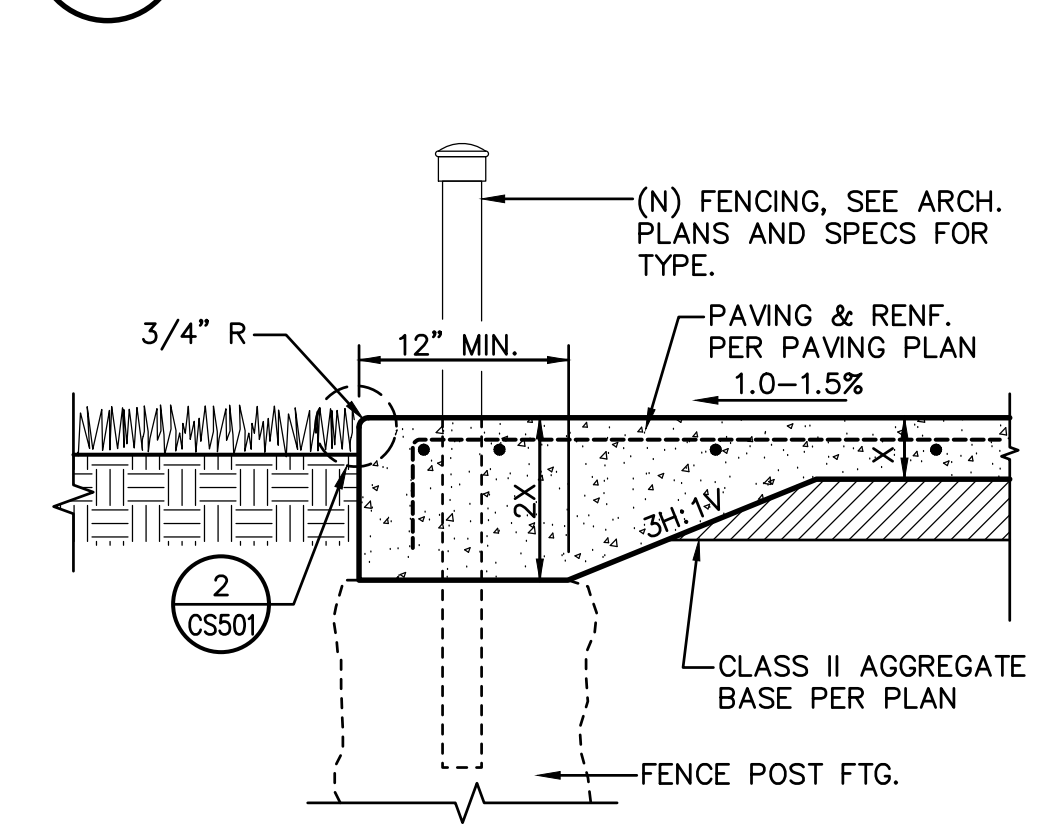
10 TRUNCATED DOMES
CS501 NO SCALE



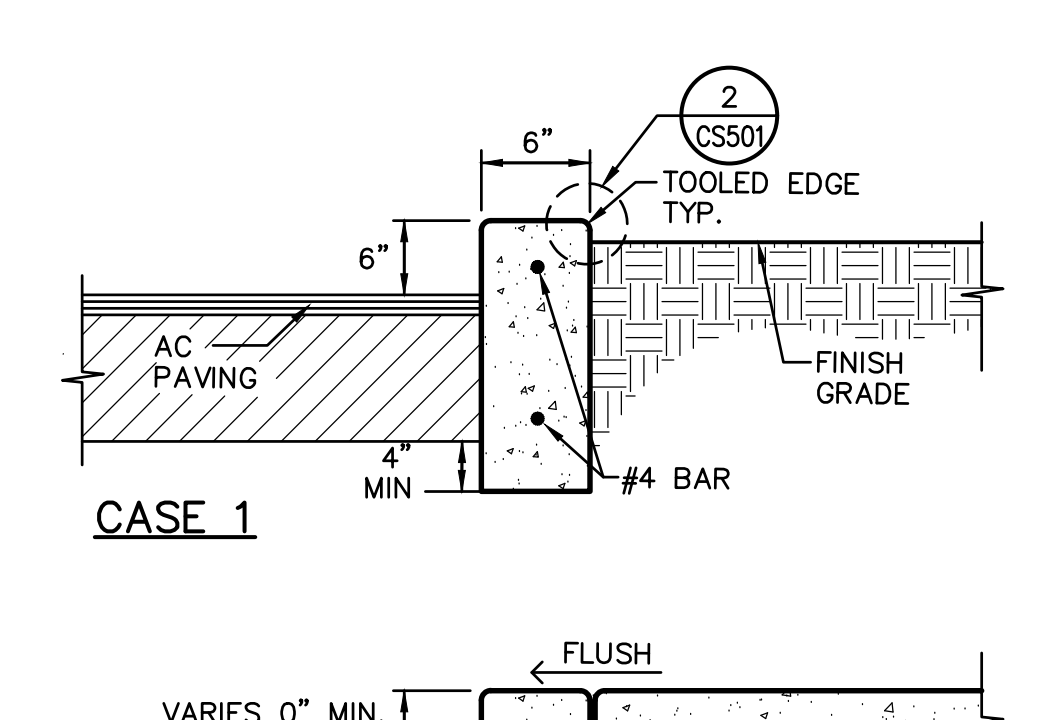
11 SLAB AT TRUNCATED DOMES
CS501 NO SCALE



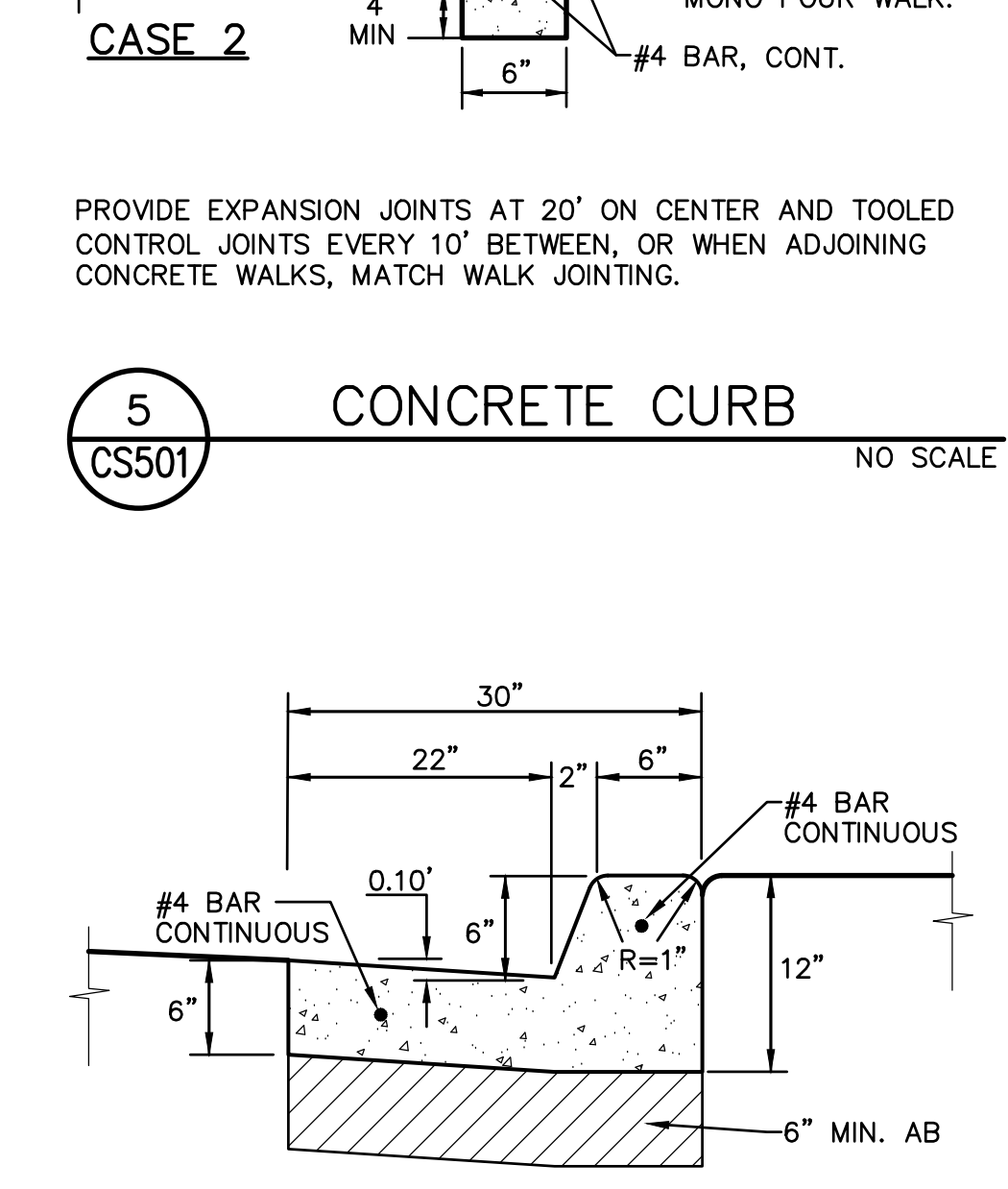
12 CONCRETE VALLEY GUTTER
CS501 NO SCALE



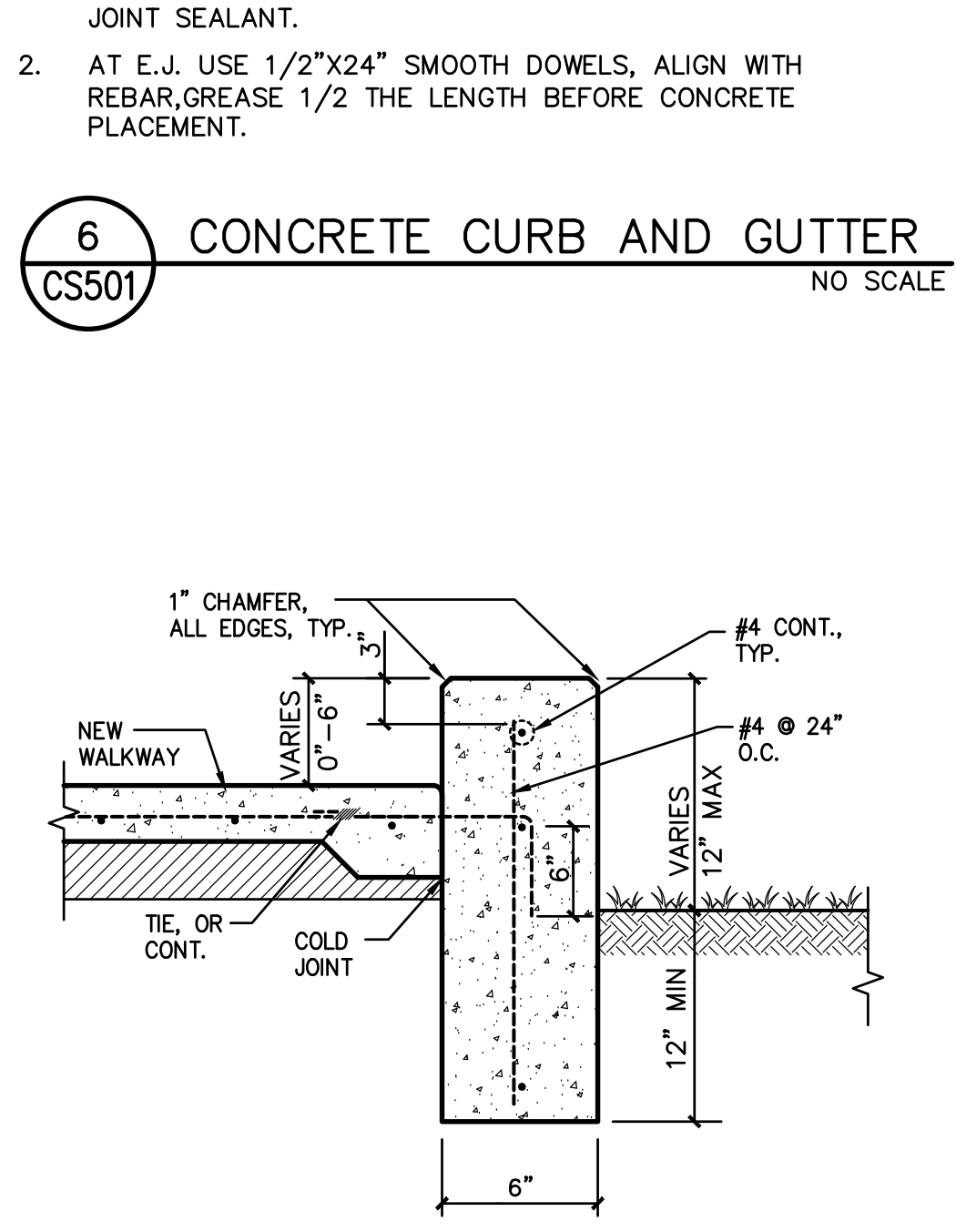
13 SLAB EDGE WITH FENCE
CS501 NO SCALE



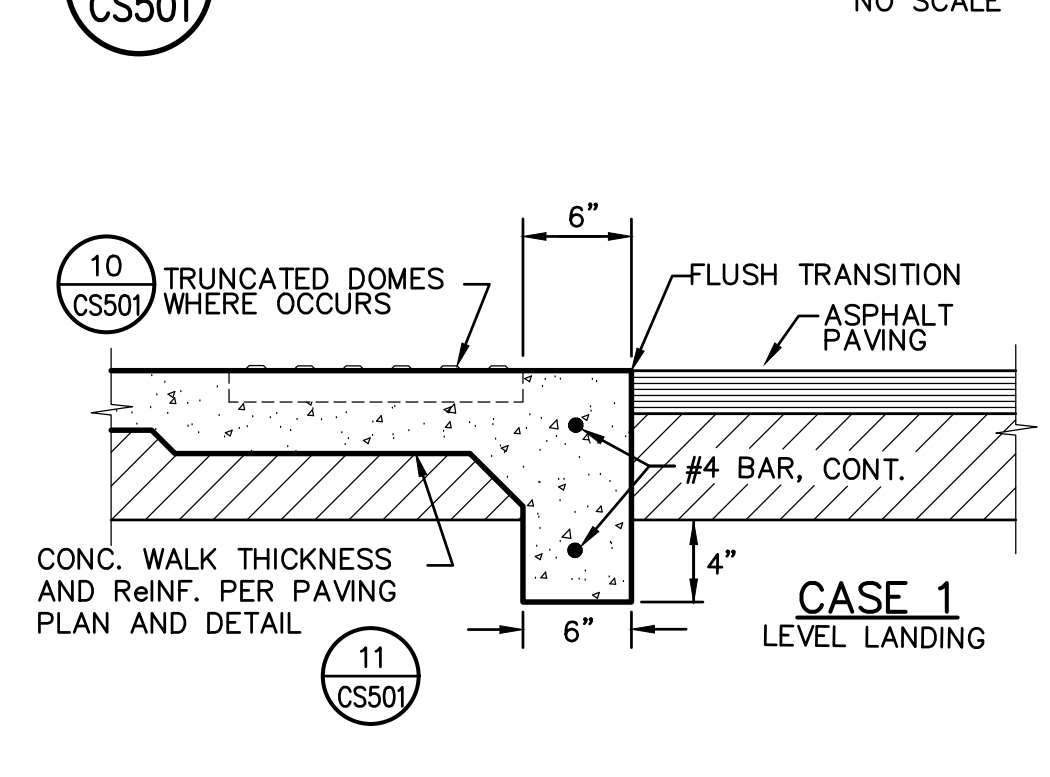
5 CONCRETE CURB
CS501 NO SCALE



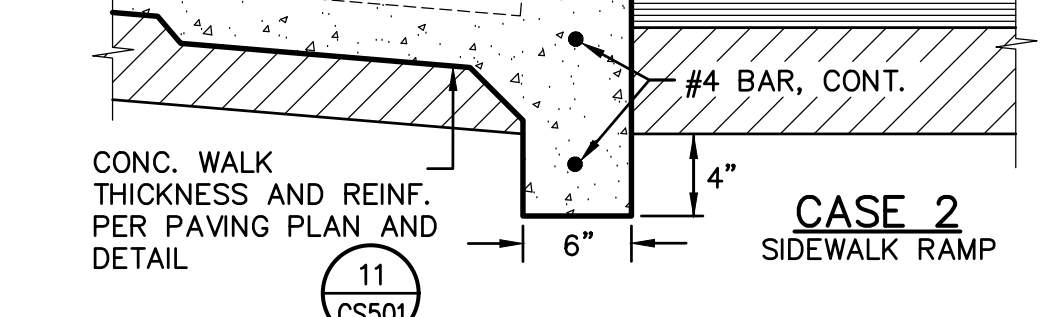
6 CONCRETE CURB AND GUTTER
CS501 NO SCALE



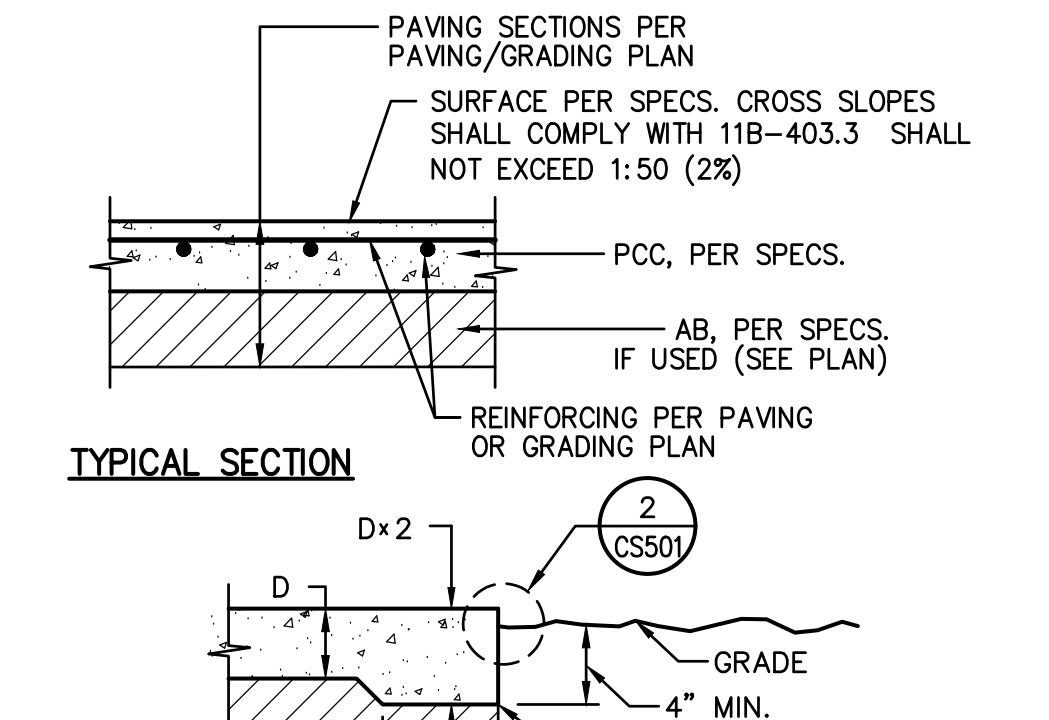
7 RAISED CURB
CS501 NO SCALE



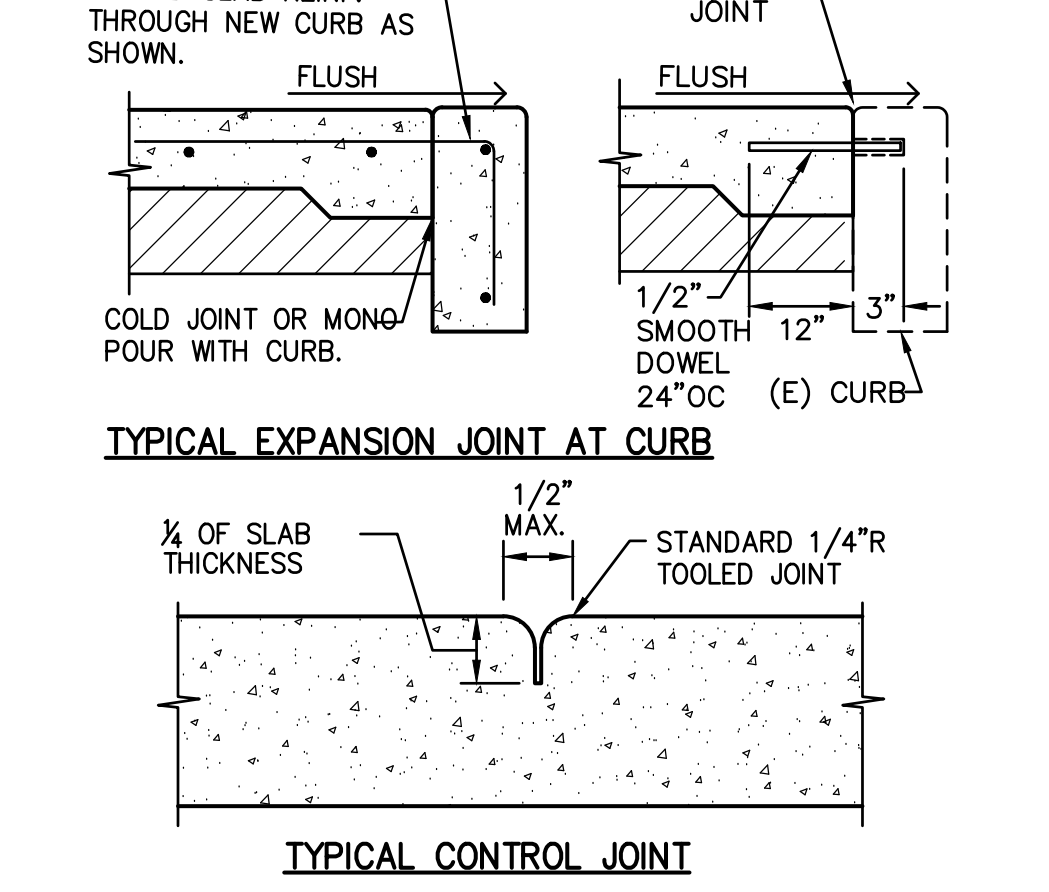
2 PAVING EDGE DETAIL
CS501 NO SCALE



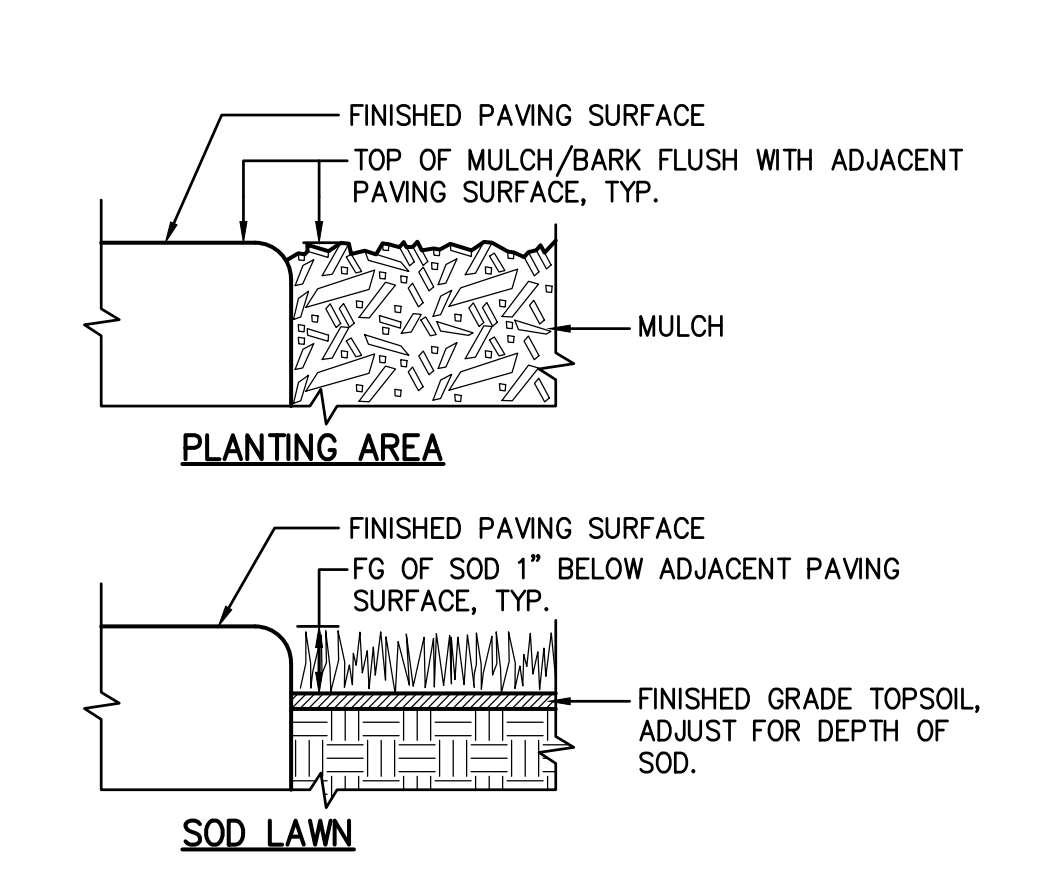
4 WALKWAY EDGE CURB
CS501 NO SCALE



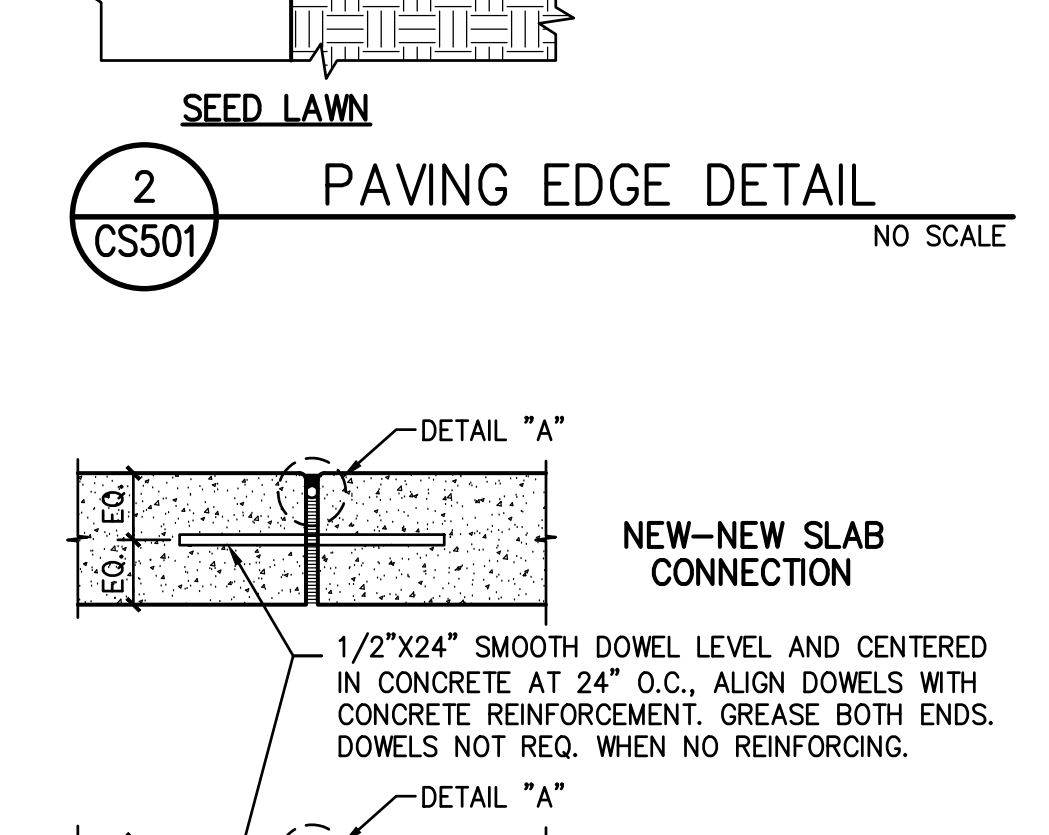
1 CONCRETE SIDEWALK
CS501 NO SCALE



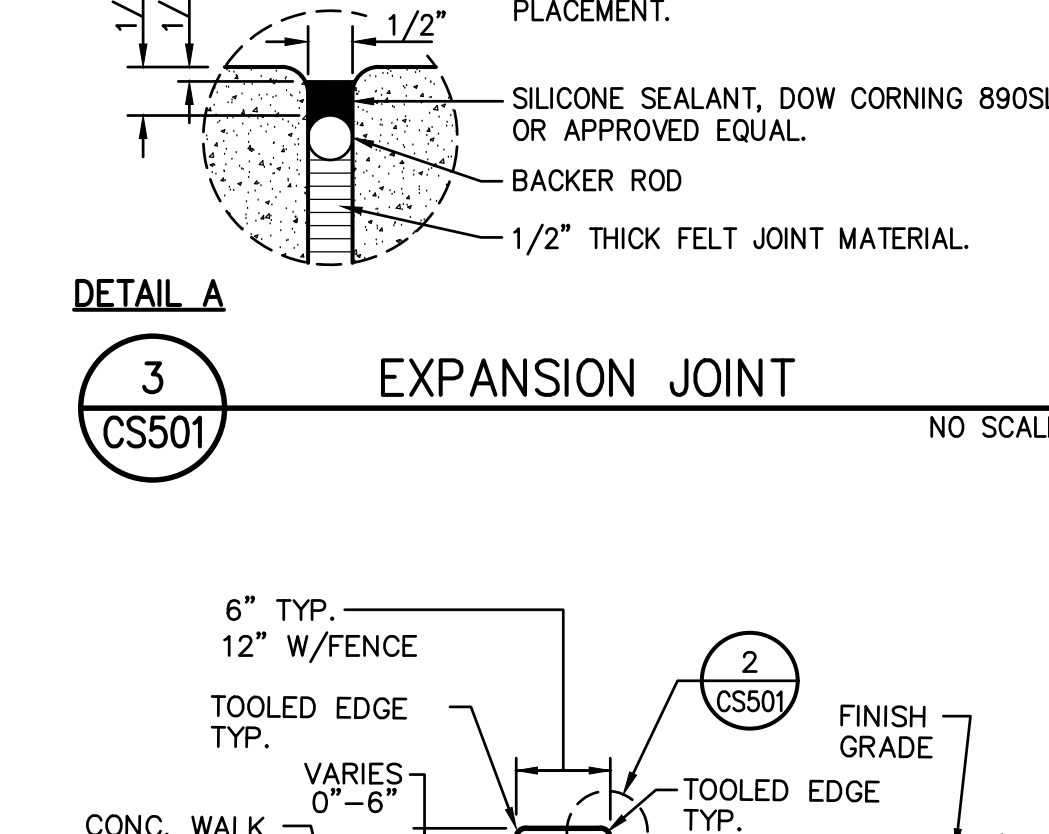
15 CONCRETE WHEEL STOP
CS501 NO SCALE



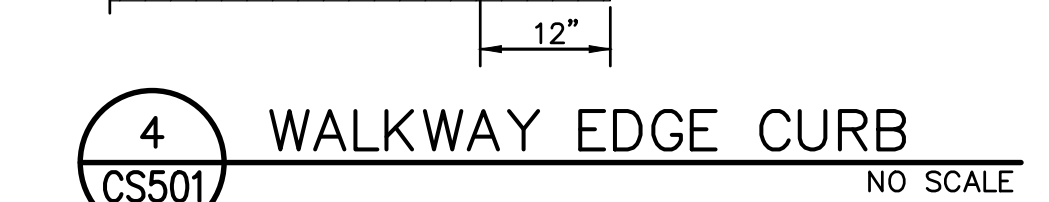
11 SLAB AT TRUNCATED DOMES
CS501 NO SCALE



12 CONCRETE VALLEY GUTTER
CS501 NO SCALE



13 SLAB EDGE WITH FENCE
CS501 NO SCALE



8 FLUSH CONCRETE EDGE
CS501 NO SCALE

LIONAKIS
 2025 Nineteenth Street
 Sacramento, CA 95818
 P 916.558.1900
 www.lionakis.com

CONSULTANT
WC
 WARREN CONSULTING ENGINEERS, INC.
 1117 WINDFIELD WAY, SUITE 110
 EL CORONADO HILLS, CA 92702 | (916) 985-1870

REGISTERED PROFESSIONAL ENGINEER
ANTHONY J. TASSANO
 No. C74896
 State of California
 01/12/2024

PROJECT
**LUTHER BURBANK HIGH SCHOOL
 ATHLETIC FIELDS RENOVATION**

3500 FLORIN ROAD
 SACRAMENTO, CA 95823

CLIENT
 SACRAMENTO CITY UNIFIED SCHOOL DISTRICT

5735 47TH AVENUE, SACRAMENTO, CA 95824

ISSUED

MARK	DATE	DESCRIPTION
-	8.10.2023	DSA SUBMITTAL
-	10.16.2023	DSA BACKCHECK

MANAGEMENT

LIONAKIS PROJECT NO.	023041
DSA APPLICATION NO.	02-121593
CLIENT PROJECT NO.	####
COPYRIGHT:	LIONAKIS 2017

TITLE
SITE DETAILS

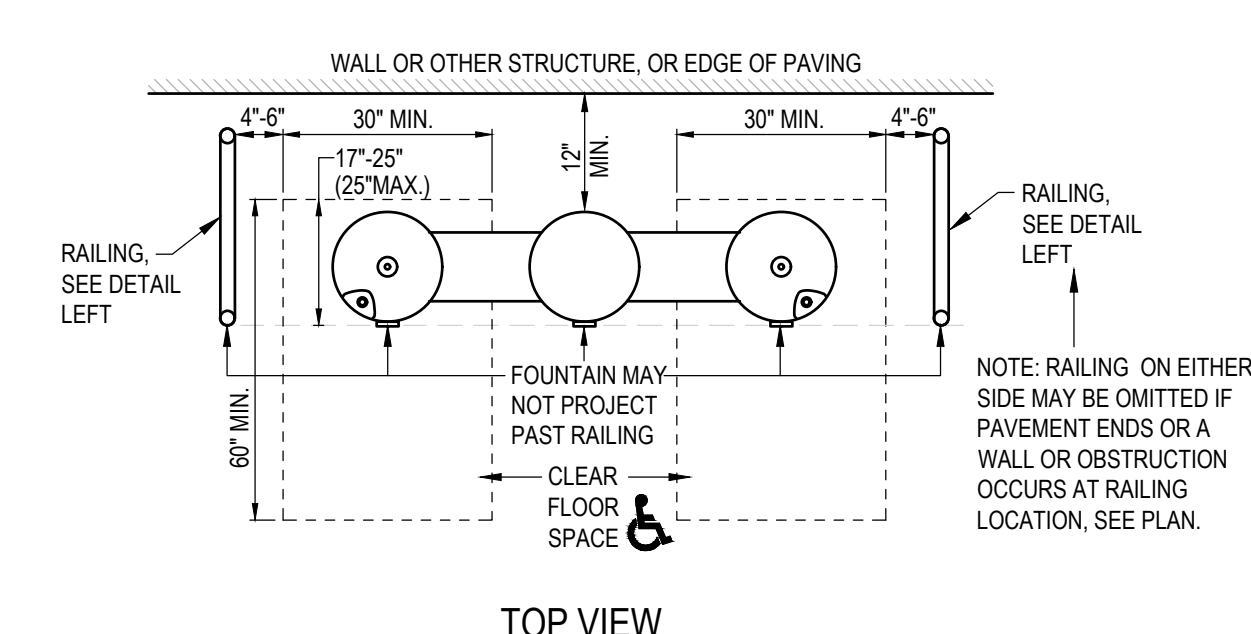
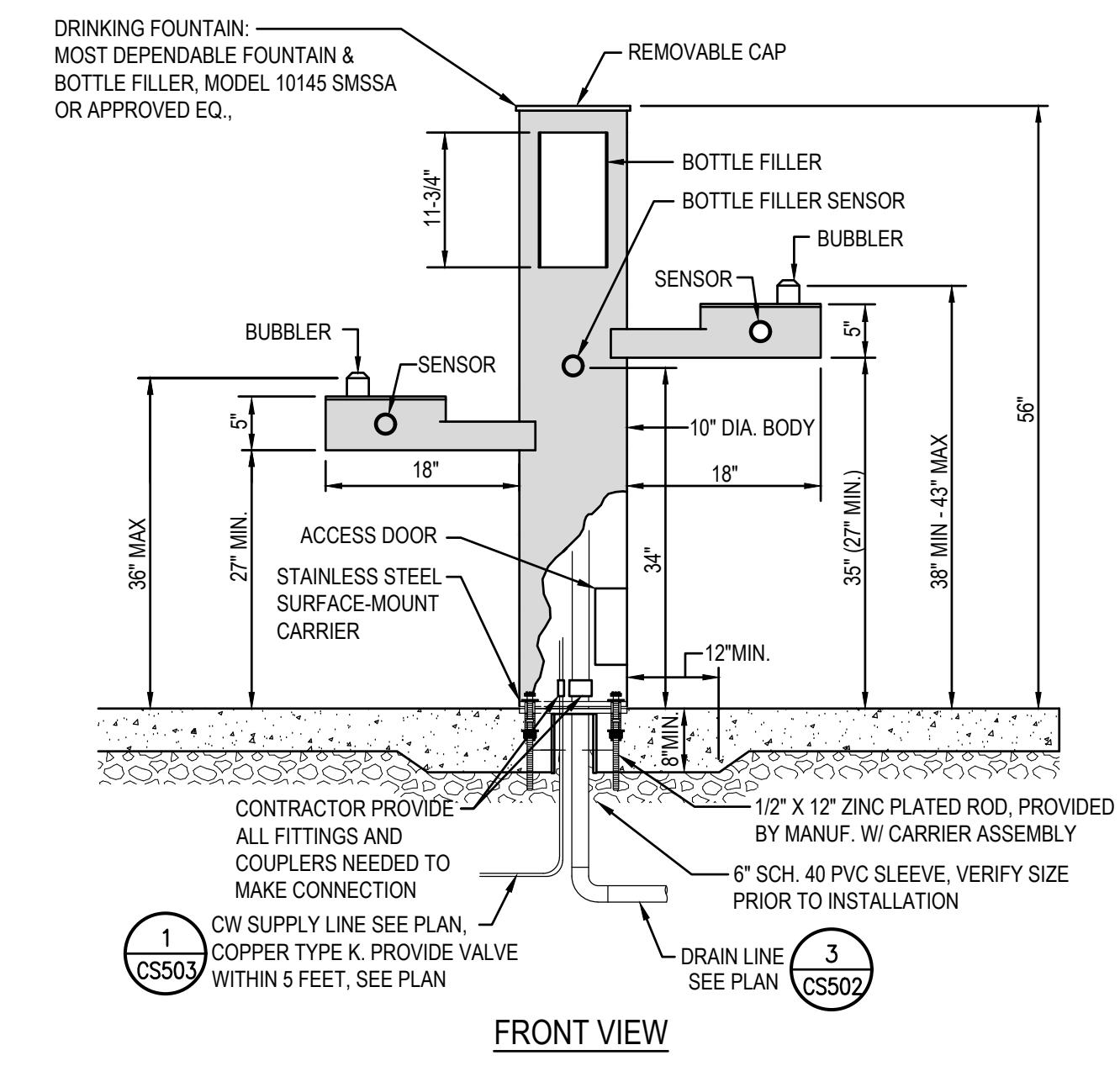
SHEET
CS501

IF THIS SHEET IS NOT 36"x42", IT IS A REDUCED PRINT - SCALE ACCORDINGLY

C

B

FILE: I:\23-106\CIVIL\DWG\23-106-114 - CS501-CS504.DWG
PLOT DATE: 11/22/2024 9:55:34 AM



- OPTIONAL ACCESSORIES TO PROVIDE:**
- SIDE JUG FILLER (NOT SAME AS BOTTLE FILLER) YES NO
 - FOOTWASH YES NO
 - WATER FILTER YES NO
 - PLAQUE YES NO
 - PET FOUNTAIN YES NO
 - RECESSED HOSE BIB YES NO
 - BOWL SAND STRAINER YES NO
 - SEASONAL COVER YES NO
 - SIDE HOSE BIB YES NO
 - CUT OFF VALVE YES NO
 - FREEZE VALVE YES NO
 - SAFE STREAM BUBBLE HEAD YES NO
 - TEMPLATE 10 NS CARRIER YES NO

4 DRINKING FOUNTAIN NO SCALE
CS503 HI-LO WITH BOTTLE FILLER

HORIZONTAL THRUST BLOCKS REQUIRED BEARING AREA, IN SQ. FT.

INSTALLATION	FITTING TYPE	PIPE SIZES				
		4"	6"	8"	10"	12"
	90° ELBOW	5	11	19	28	39
	45° ELL	3	6	10	15	21
	22.5° ELL	1.5	3	5.1	7.6	11
	11.25° ELL	1	1.5	2.5	3.8	5.4
	TEE	5	11	19	28	39
	TEE W/ CAP	5	11	19	28	39
	DEAD END (STUB)	4	8	13	20	28
	REDUCER	SEE BELOW				
	VALVES	SEE VALVE DETAIL(S)				
	HYDRANT	SEE HYDRANT DETAIL(S)				

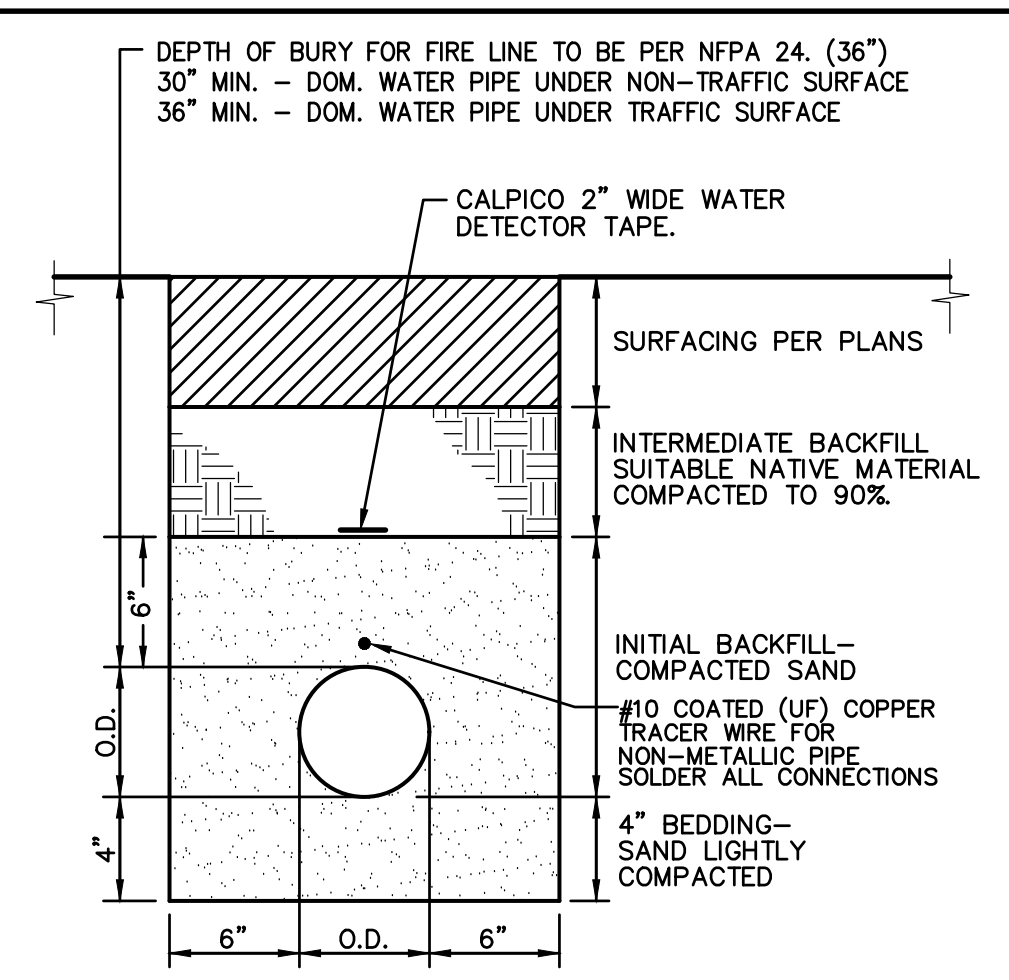
VERTICAL THRUST BLOCKS REQUIRED CONCRETE VOLUME, IN CY.

INSTALLATION	FITTING TYPE	PIPE SIZES				
		4"	6"	8"	10"	12"
	90° ELBOW	1.0	2.1	3.8	5.2	8.4
	45° ELL	0.7	1.5	2.7	4.2	6.0
	22.5° ELL	0.4	0.8	1.5	2.3	3.3
	11.25° ELL	0.2	0.5	0.8	1.2	1.8
	TEE	0.7	1.5	2.7	4.2	6.0

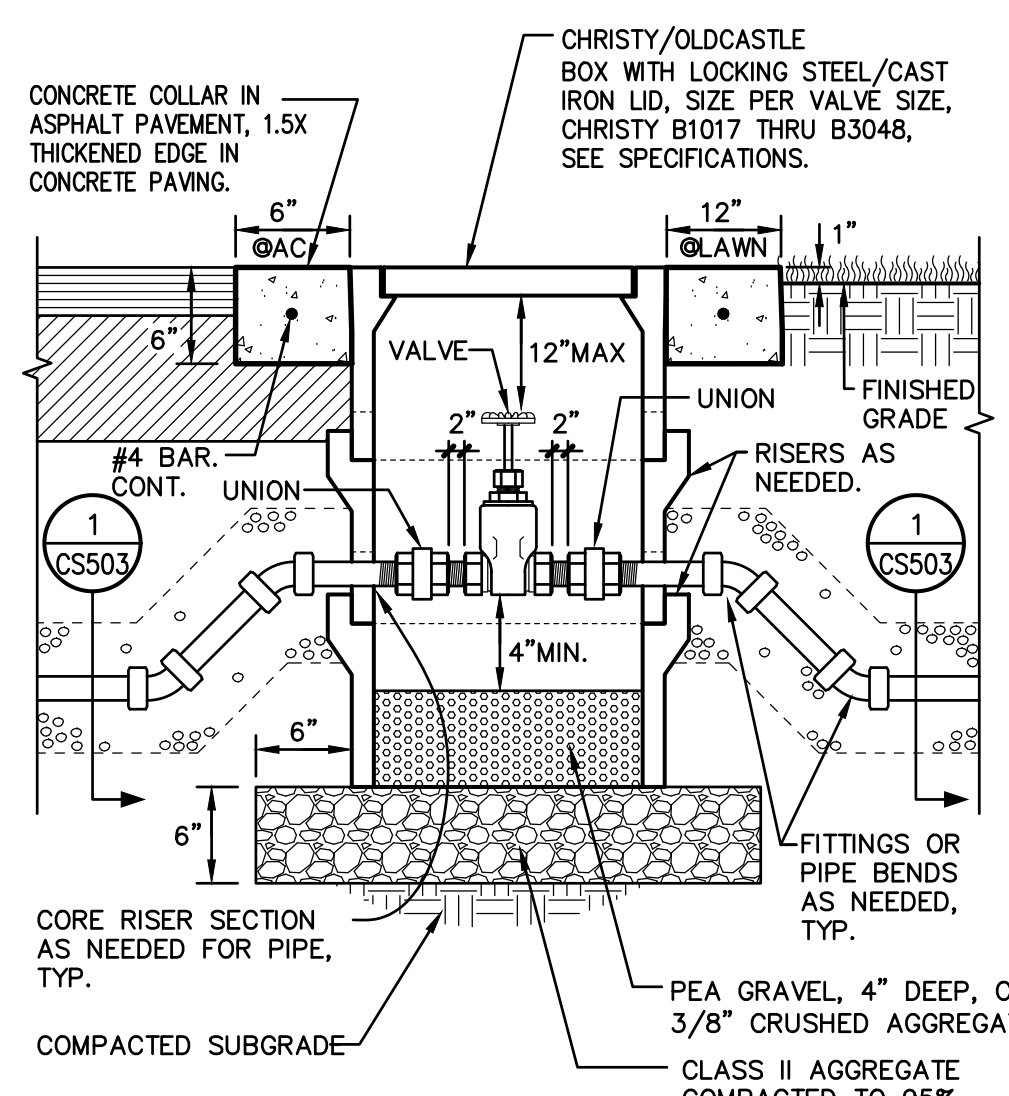
W/ MIN. 2 #5 REBAR TIES, TYP.

- NOTES:**
- THRUST BLOCKS ARE TO BE CONSTRUCTED OF 2500 PSI CONCRETE MIN.
 - AREAS IN TABLE HAVE BEEN DERIVED USING A WATER PRESSURE OF 200 POUNDS PER SQUARE INCH (13.8 BARS) AND SOIL RESISTANCE OF 1500 POUNDS PER SQUARE FOOT.
 - BLOCKING TO BE POURED AGAINST UNDISTURBED SOIL.
 - THRUST BLOCKS ARE TO BE FREE, SEPARATE AND INDEPENDENT OF ADJACENT OR NEARBY THRUST BLOCKS.

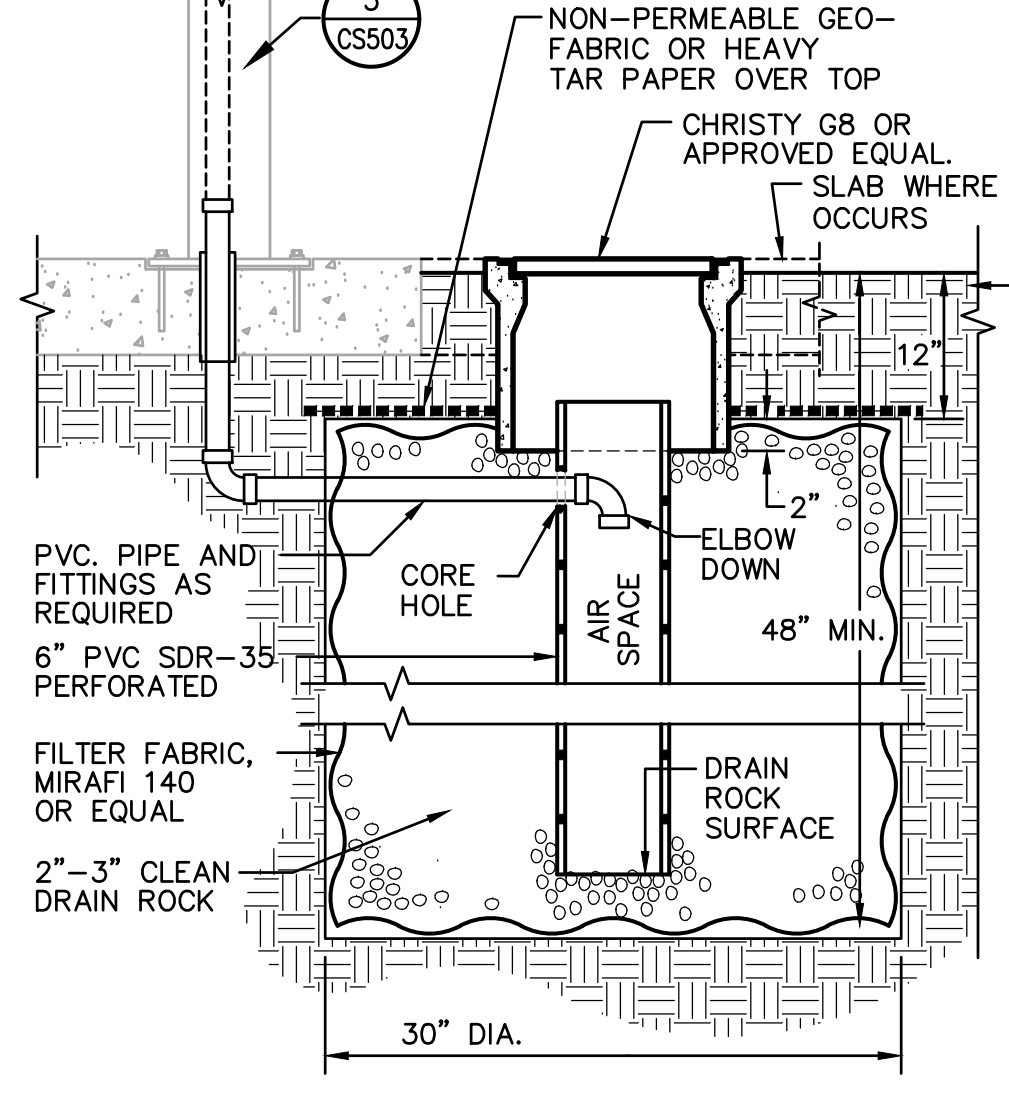
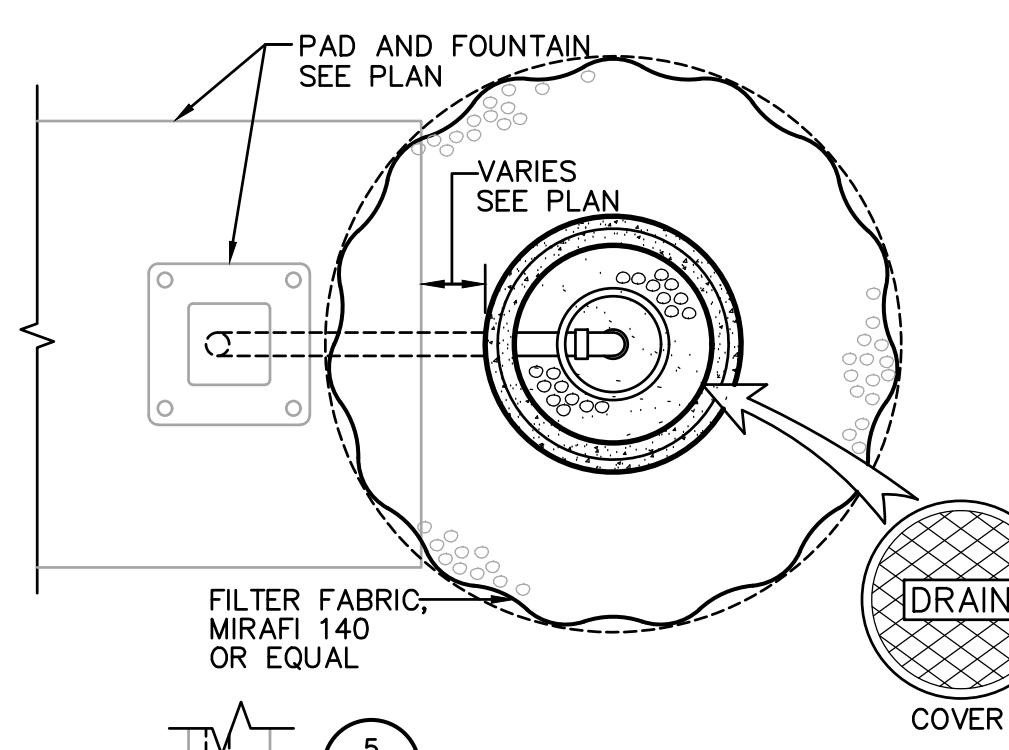
5 THRUST BLOCKS NO SCALE
CS503



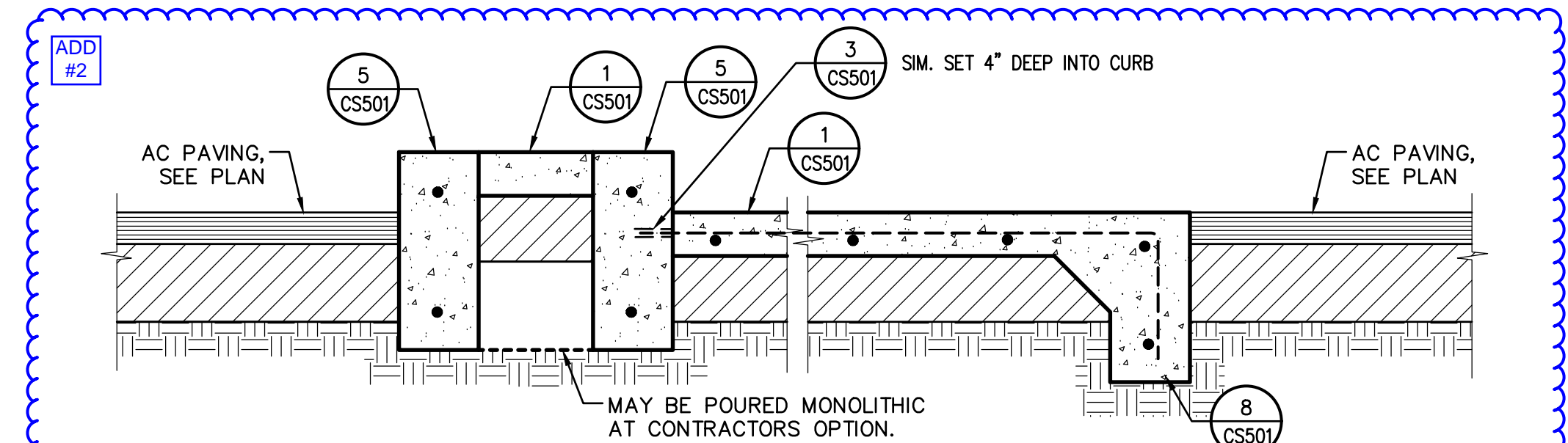
1 WATER TRENCH NO SCALE
CS503



2 WATER VALVE NO SCALE
CS503 1/2" TO 3" PIPE ONLY PRIVATE WATER LINES ONLY



3 FOUNTAIN DRYWELL NO SCALE
CS503



6 WALKWAY SECTION NO SCALE
CS503

LIONAKIS

2025 Nineteenth Street
Sacramento, CA 95818
P 916.558.1900
www.lionakis.com

CONSULTANT

WC TASSANO
REGISTERED PROFESSIONAL ENGINEER
ANTHONY J. TASSANO
No. C74866
STATE OF CALIFORNIA
01/10/2024

WARREN CONSULTING ENGINEERS, INC.
1117 WINDFIELD WAY, SUITE 110
EL CORRALO HILLS, CA 95702 | (916) 985-1870

PROJECT
**LUTHER BURBANK HIGH SCHOOL
ATHLETIC FIELDS RENOVATION**

3500 FLORIN ROAD
SACRAMENTO, CA 95823

CLIENT
SACRAMENTO CITY UNIFIED SCHOOL DISTRICT

5735 47TH AVENUE, SACRAMENTO, CA 95824

ISSUED

MARK	DATE	DESCRIPTION
-	8.10.2023	DSA SUBMITTAL
-	10.16.2023	DSA BACKCHECK

MANAGEMENT

LIONAKIS PROJECT NO:	023041
DSA APPLICATION NO:	02-121593
CLIENT PROJECT NO:	####
COPYRIGHT:	LIONAKIS 2017

TITLE
SITE DETAILS

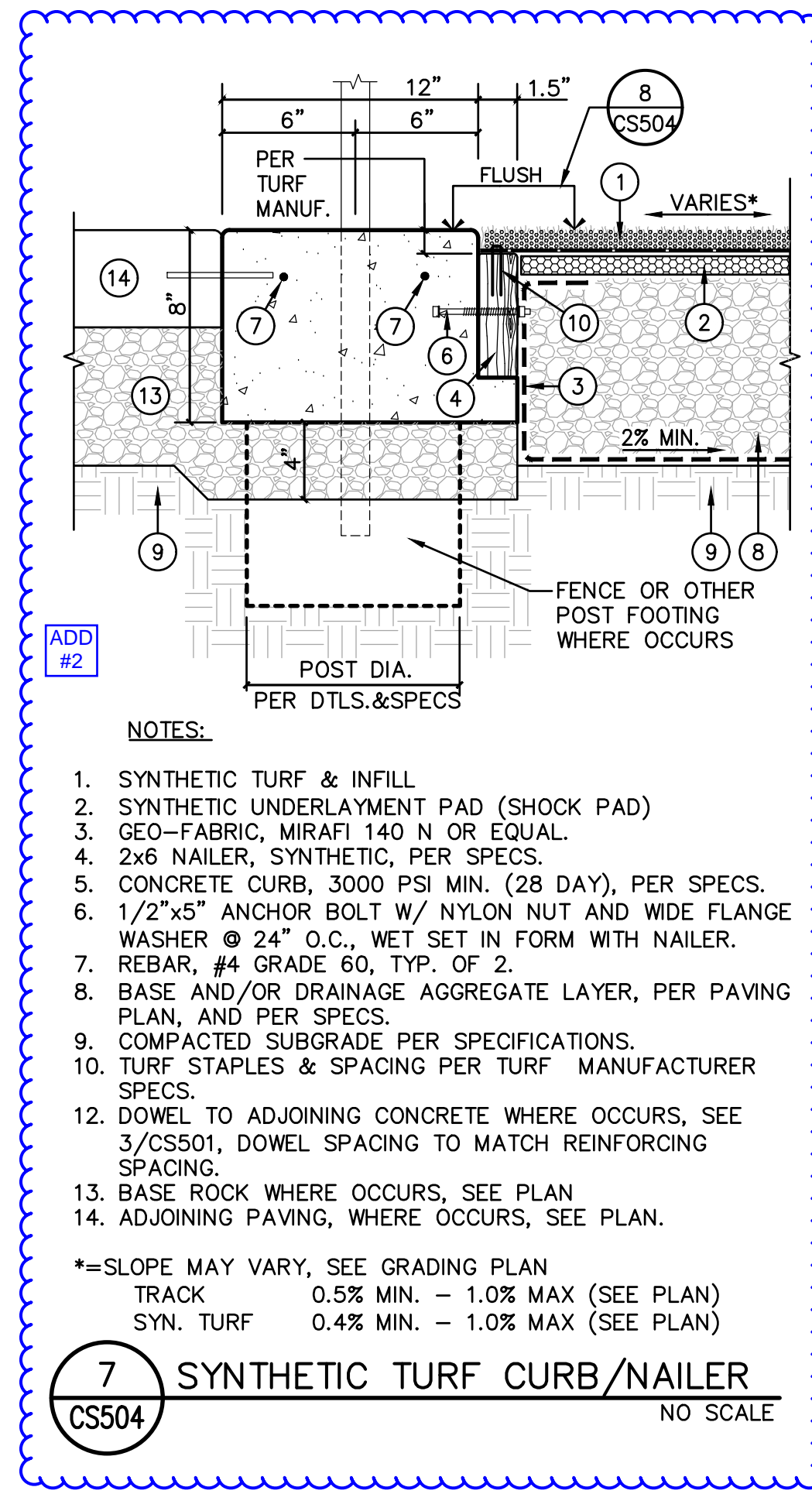
SHEET
CS503

IF THIS SHEET IS NOT 36"x42", IT IS A REDUCED PRINT - SCALE ACCORDINGLY

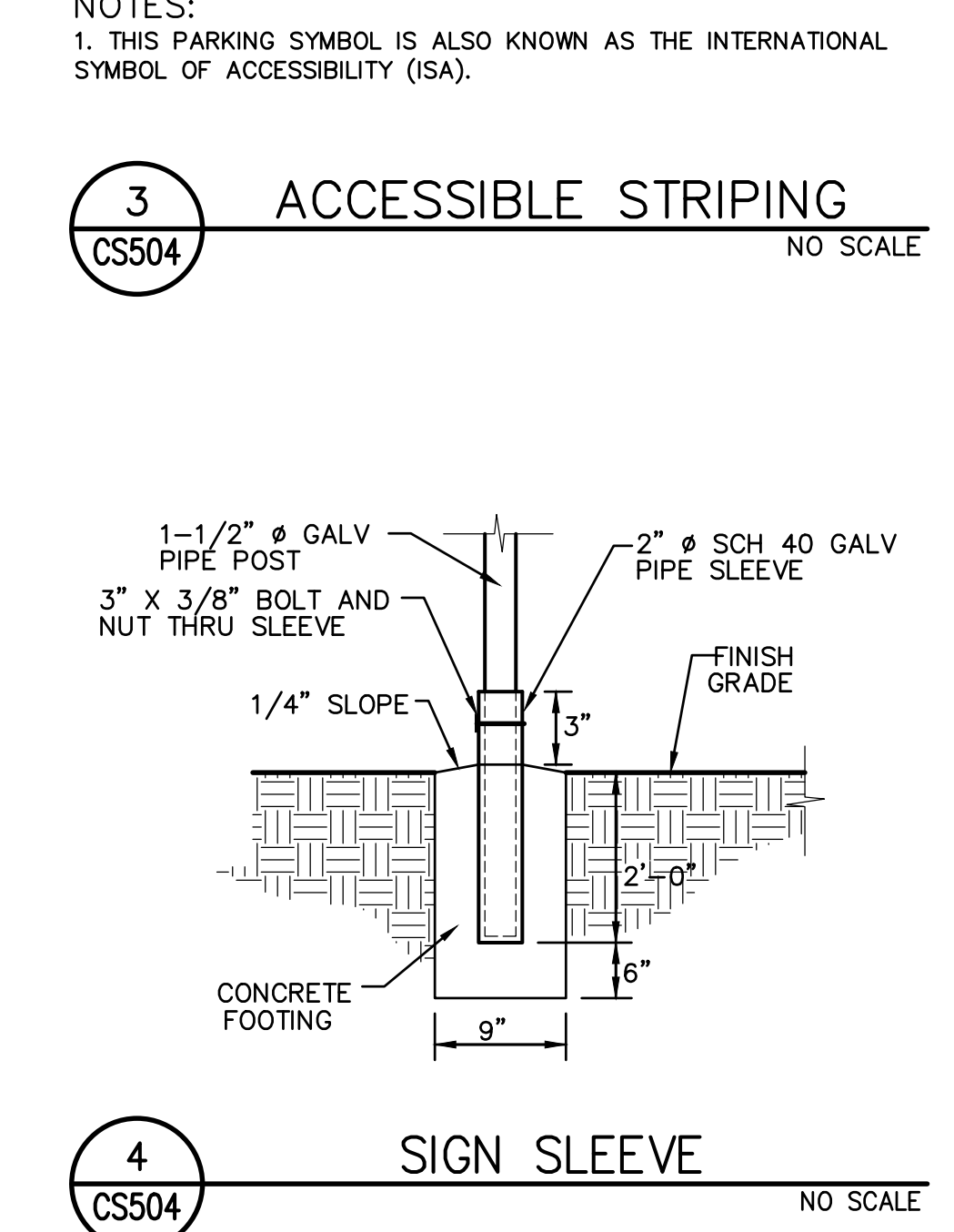
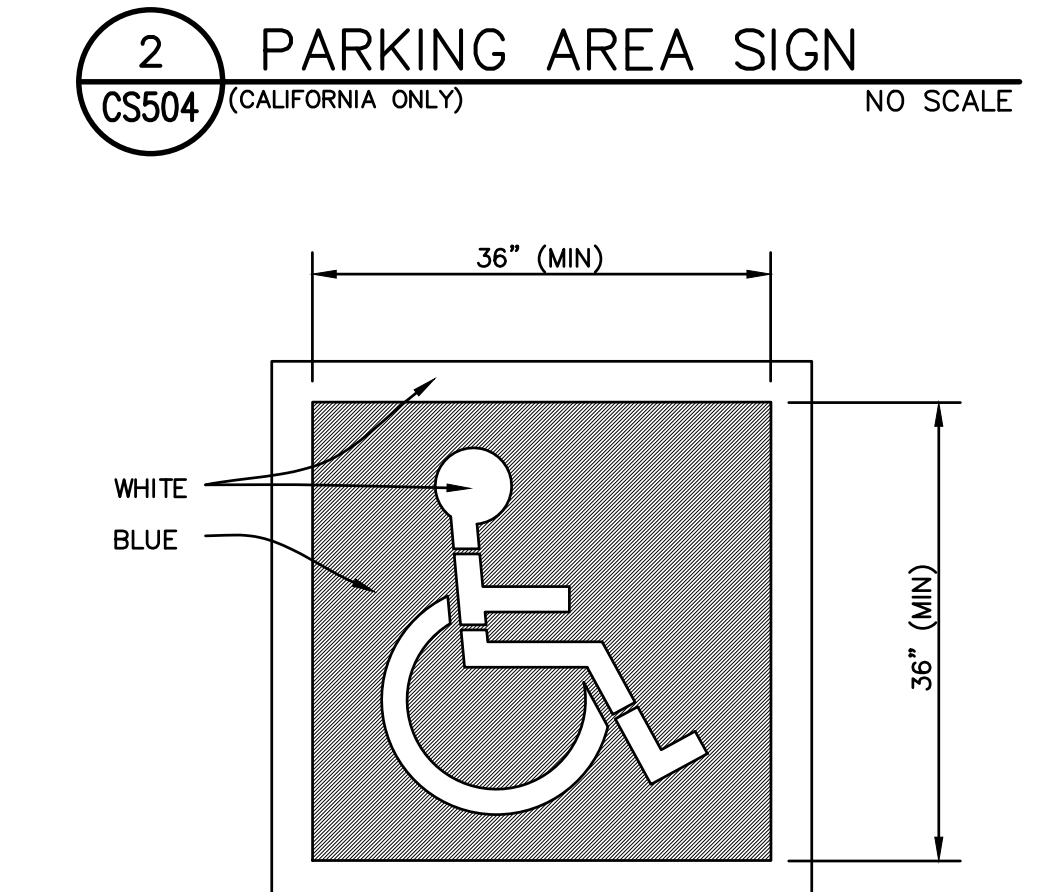
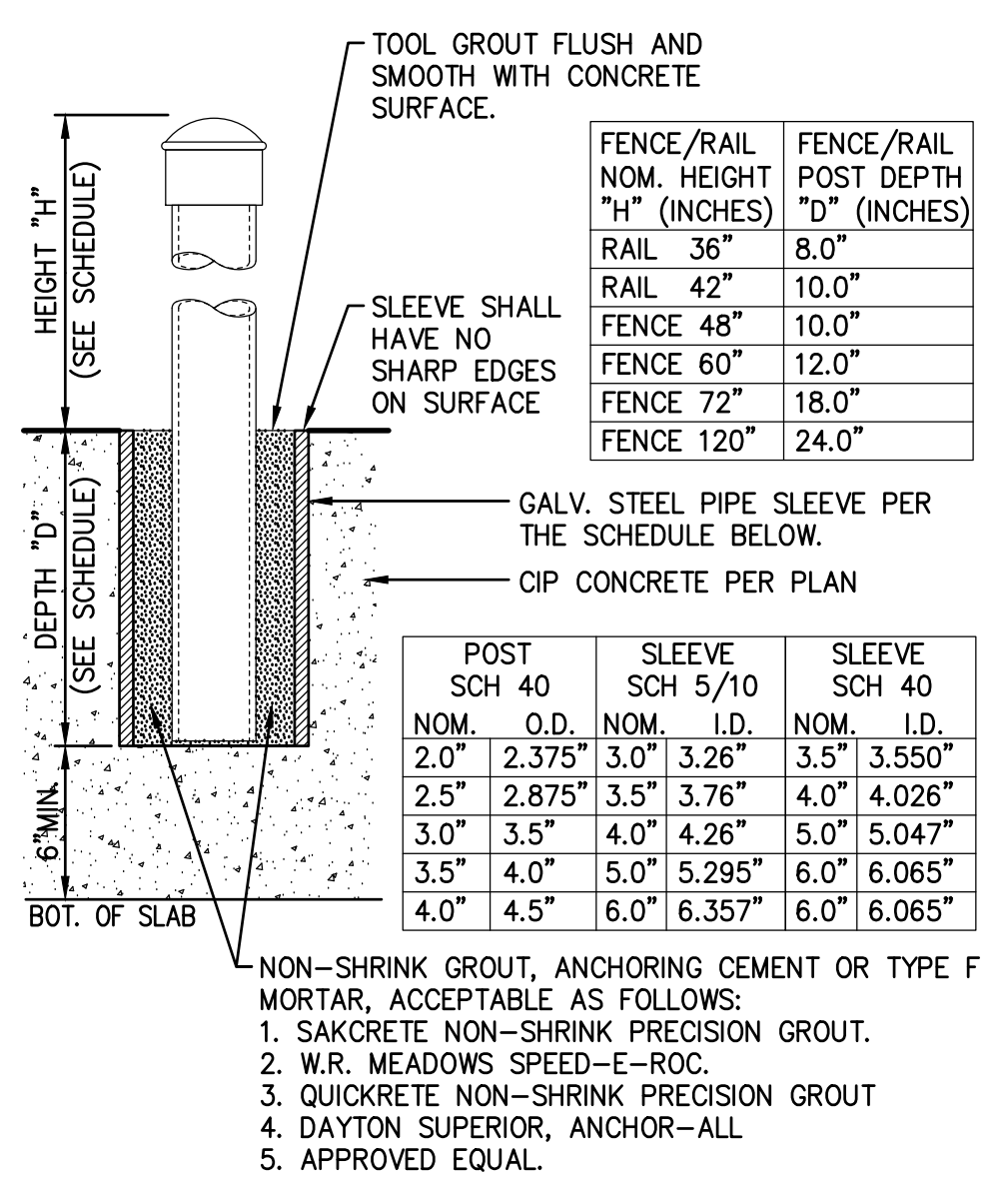
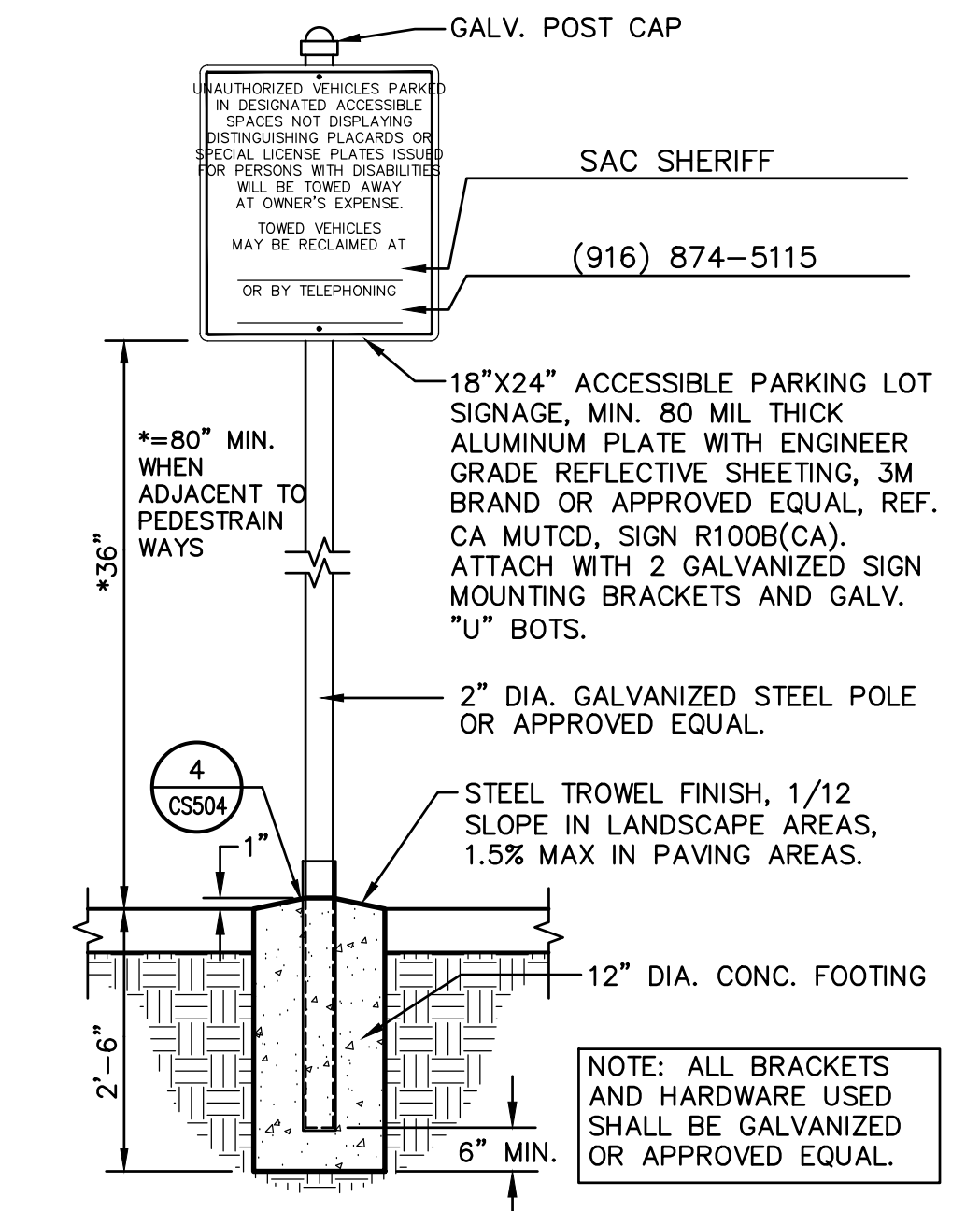
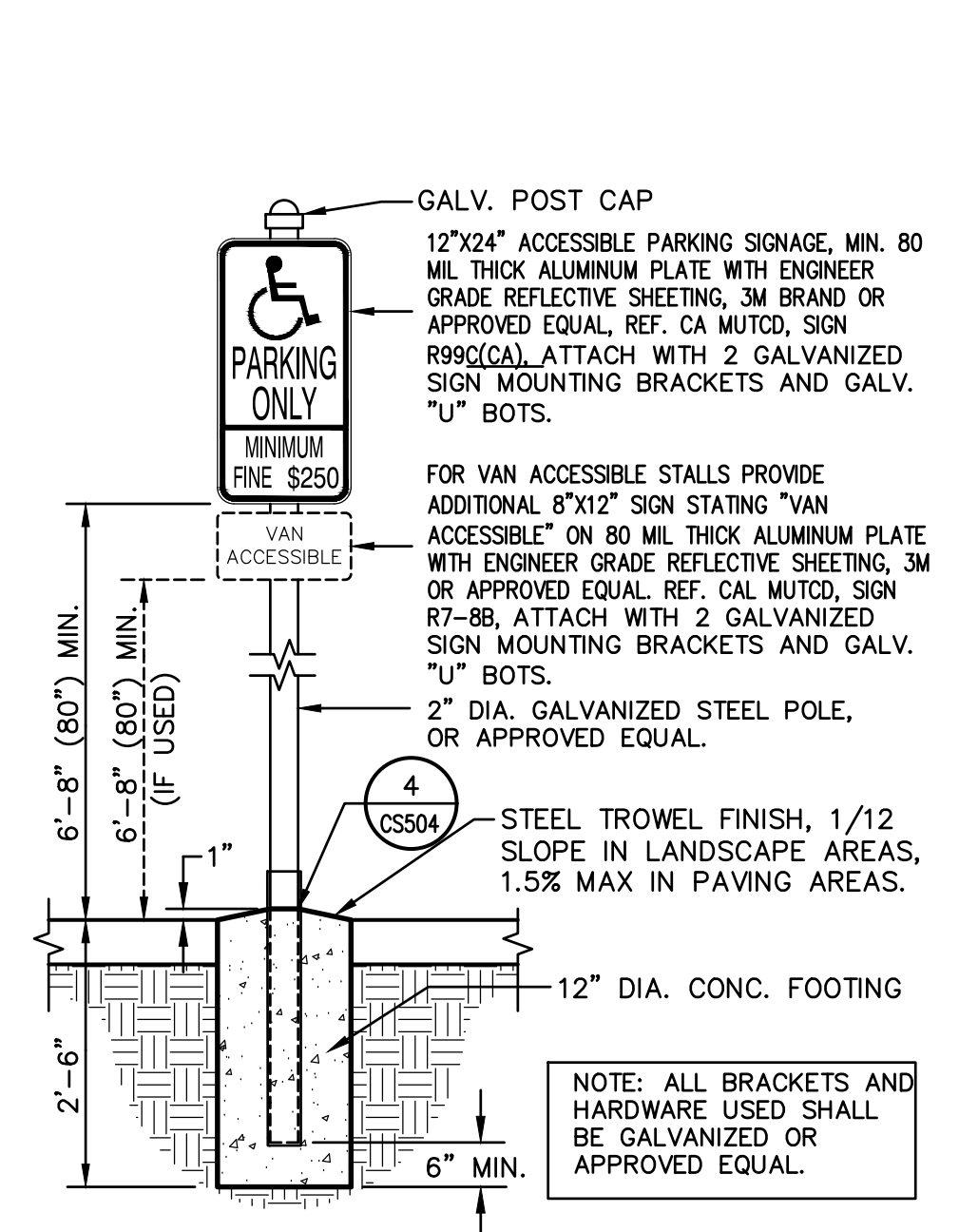
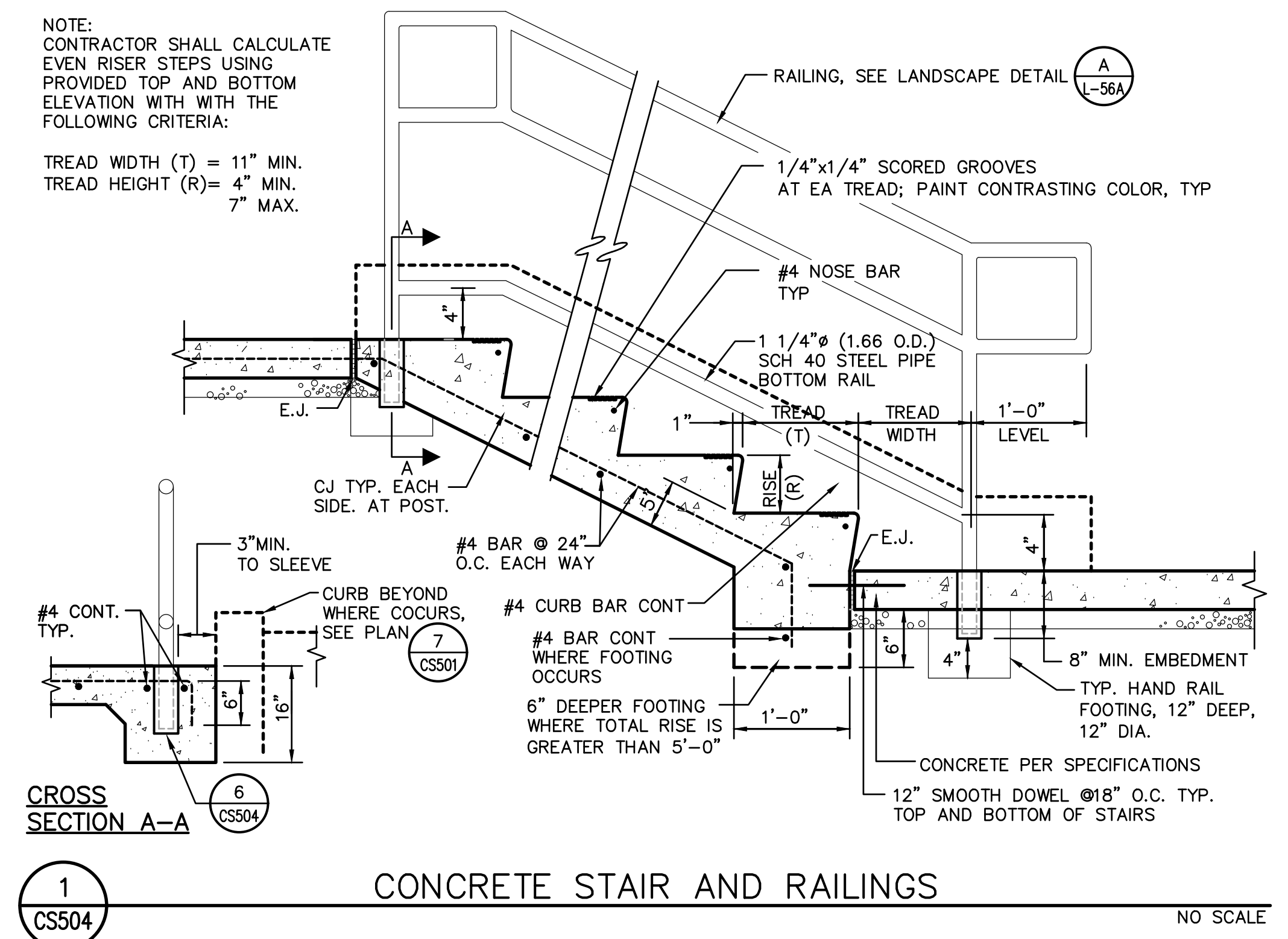
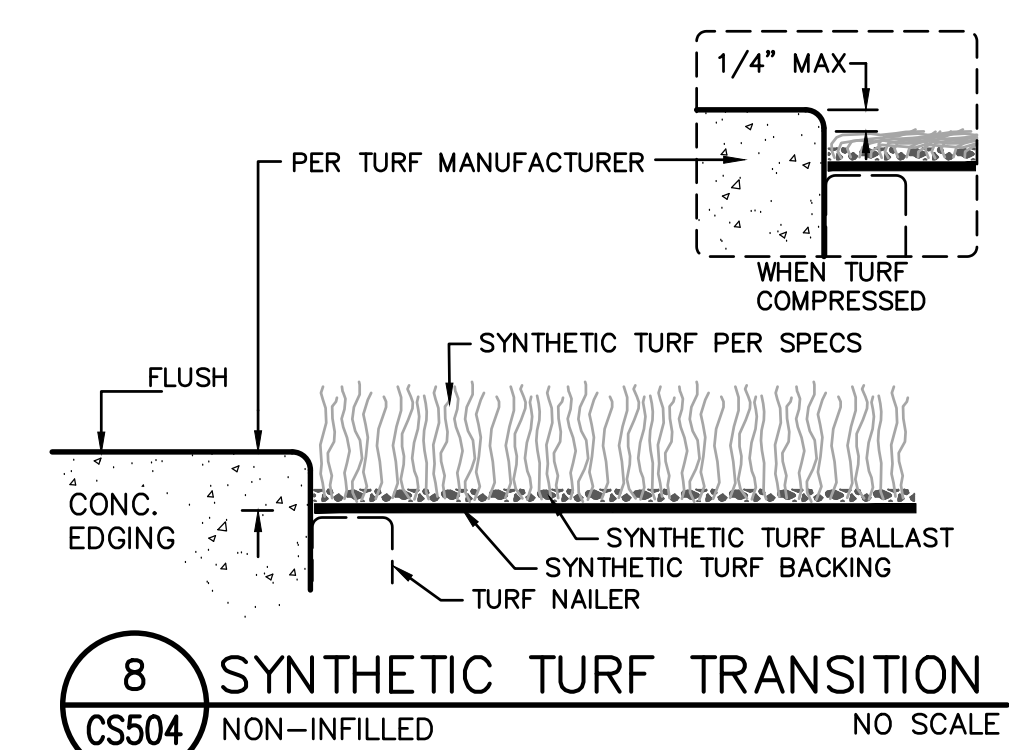
C

B

PLOT DATE: 11/22/2024 9:55:42 AM FILENAME: I:\23-106\CIVIL\DWG\23-106-114-CS504-CS504.DWG



- NOTES:**
1. SYNTHETIC TURF & INFILL
 2. SYNTHETIC UNDERLAYMENT PAD (SHOCK PAD)
 3. GEO-FABRIC, MIRAFI 140 N OR EQUAL
 4. 2x6 NAILER, SYNTHETIC, PER SPECS.
 5. CONCRETE CURB, 3000 PSI MIN. (28 DAY), PER SPECS.
 6. 1/2"x5" ANCHOR BOLT W/ NYLON NUT AND WIDE FLANGE WASHER @ 24" O.C., WET SET IN FORM WITH NAILER.
 7. REBAR, #4 GRADE 60, TYP. OF 2.
 8. BASE AND/OR DRAINAGE AGGREGATE LAYER, PER PAVING PLAN, AND PER SPECS.
 9. COMPACTED SUBGRADE PER SPECIFICATIONS.
 10. TURF STAPLES & SPACING PER TURF MANUFACTURER SPECS.
 12. DOWEL TO ADJOINING CONCRETE WHERE OCCURS, SEE 3/CS501, DOWEL SPACING TO MATCH REINFORCING SPACING.
 13. BASE ROCK WHERE OCCURS, SEE PLAN.
 14. ADJOINING PAVING, WHERE OCCURS, SEE PLAN.
- *=SLOPE MAY VARY, SEE GRADING PLAN
 TRACK 0.5% MIN. - 1.0% MAX (SEE PLAN)
 SYN. TURF 0.4% MIN. - 1.0% MAX (SEE PLAN)



LIONAKIS

2025 Nineteenth Street
 Sacramento, CA 95818
 P 916.558.1900
 www.lionakis.com

CONSULTANT

WC

WARREN CONSULTING ENGINEERS, INC.
 1117 WINDFIELD WAY, SUITE 110
 EL CORRALO HILLS, CA 94702 | (916) 985-1870

REGISTERED PROFESSIONAL ENGINEER
 ANTHONY J. TASSANO
 No. C74866
 State of California
 01/10/2024

PROJECT
**LUTHER BURBANK HIGH SCHOOL
 ATHLETIC FIELDS RENOVATION**

3500 FLORIN ROAD
 SACRAMENTO, CA 95823

CLIENT
 SACRAMENTO CITY UNIFIED SCHOOL DISTRICT

5735 47TH AVENUE, SACRAMENTO, CA 95824

ISSUED

MARK	DATE	DESCRIPTION
-	8.10.2023	DSA SUBMITTAL
-	10.16.2023	DSA BACKCHECK

MANAGEMENT

LIONAKIS PROJECT NO:	023041
DSA APPLICATION NO:	02-121593
CLIENT PROJECT NO:	####
COPYRIGHT:	LIONAKIS 2017

TITLE
SITE DETAILS

SHEET
CS504