



# COVID-19 Update

June 23, 2022

**Presented by:**

Bob Lyons, Chief Information Officer

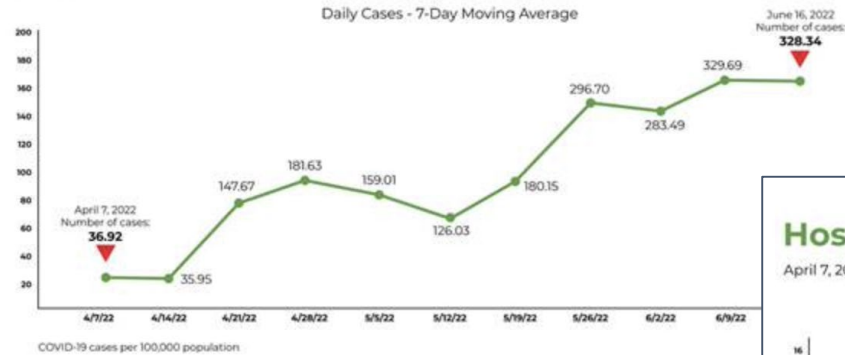
Victoria Flores, Director of Student Support & Health Services



# CDC Community Levels Data

## Total COVID Case Increase

April 7, 2022 - June 16, 2022



Sacramento County, California

[State Health Department](#)

**COVID-19 Community Level**

Recommended actions based on current level

● High

## Hospital Admissions Rate (Per 100,000)

April 7, 2022 - June 16, 2022



# COVID Updates

## Multiple Variants

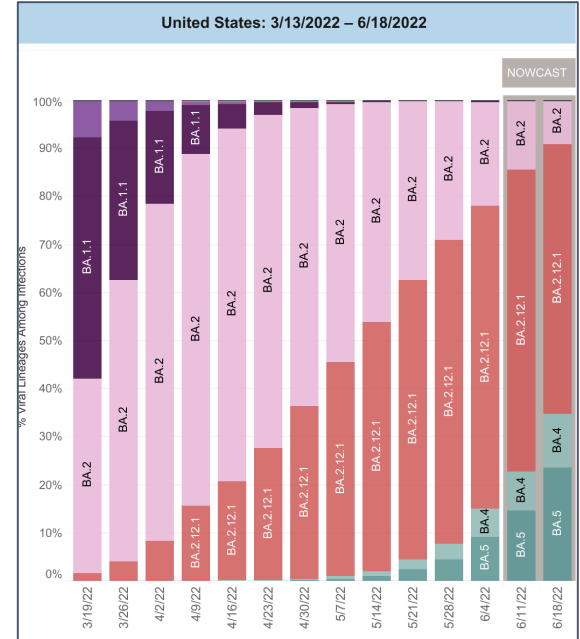
- BA.2, BA.2.12.1 predominate variants
- BA.4 & BA.5 making an impact - even more transmissible than the current predominate variants
- Continue to test, stay home sick, isolate, face mask, ventilate, vaccinate and treat

## Vaccine

- Approval for children 6 months - 5 yrs for Moderna (2 doses) & Pfizer (3 doses)

## Test to Treat

- Positive for COVID-19 and are 12+ years of age and at risk of developing severe COVID-19



CDC Nowcast Region 9



# COVID Updates

## **CDC Operational K-12 & Early Care and Education Guidance** (revised 5/27/22)

- Goal is to keep schools open and provide safe in-person learning
- Advises a core set of infectious disease prevention strategies as part of normal operations
- Additional COVID-19-specific prevention strategies should be tied to COVID-19 Community Levels . For example, universal indoor mask use is recommended at the High COVID-19 Community Level

## **CDPH Preliminary Testing Framework for 22-23 School Year** (issued 5/27/22)

- Primary testing will be rapid antigen
- At-Home test kits may replace or supplement school-based surveillance testing
- School must update MOU with CDPH
- CDPH staffing support contingent on state budget adoption

# SCUSD COVID Overview

**84**

VACCINE CLINICS HOSTED  
THROUGHOUT SCUSD

**7,387**

VACCINATIONS  
PROVIDED

**672,671**

TESTS  
PROVIDED

**225,000+**

FREE AT-HOME TEST KITS  
DISTRIBUTED

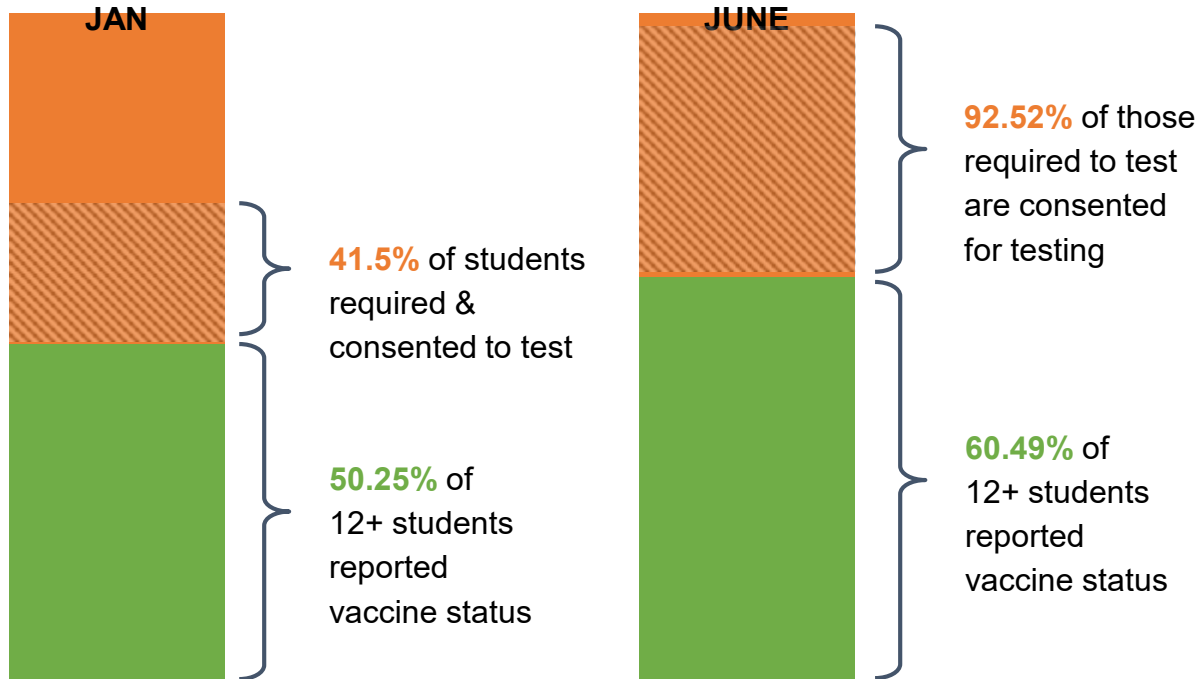
**25,000+**

POSITIVE CASES OR  
CLOSE CONTACT  
QUARANTINES CONTACT  
TRACED

**260+**

ADDITIONAL STAFF  
MANAGED  
Supporting Our Covid  
Response - Health Aides,  
Surveillance Testers, Contact  
Tracers And Data Support

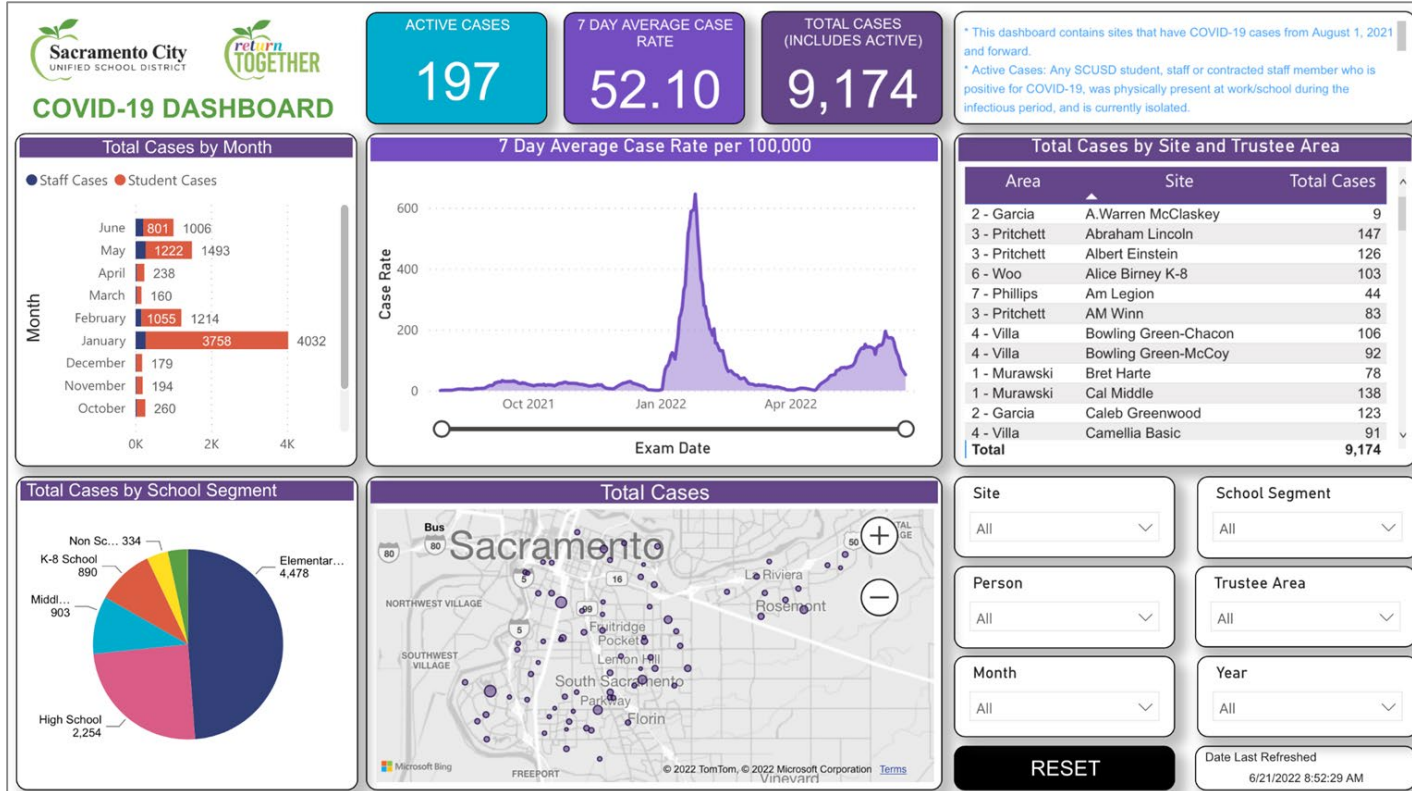
# COVID-19 Student Vaccination & Testing Progress



Total compliance with vaccine or testing requirement for the **21-22 SY**:

**95.7%**

# COVID Dashboard Updates



# Reviewing Summer & 22-23 Plans

We can resume some normalcy *and* protect community members who are vulnerable to COVID-19



## EQUITY:

- COVID-19 is disproportionately affecting low-income, Latino, Black, Native American and Pacific Islander communities
- Efforts & funding will continue addressing disparities and removing barriers to accessing care, services and supports



## METRICS:

- Regional Wastewater Surveillance & genomic sequencing of variants will inform communities (and schools) when mitigation measures should ramp up or decrease
- Monitor hospitalization rates, case rates, county levels (CDC)



## HEALTH AIDES:

- Provide site-based testing, health screening, Care Room support, contact tracing support, immunization compliance, and other health related and COVID recovery duties



## TESTING:

- School-based testing serves as a critical early warning system
- Site-based testing of symptomatic individuals, surveillance testing as indicated, and provide at-home testing kits as available
- Regional testing centers serving most impacted communities



# Reviewing Summer & 22-23 Plans

## Contact Tracing:

- Continue contact tracing to track and stop the spread of COVID
- Focus on layered mitigation measures to keep students in school after an exposure

## Masking:

- Targeted and risk-based masking requirements that may be loosened or tightened based on changing conditions
- Maintain ongoing stock of high quality masks for required or voluntary masking

## Vaccination:

- School-based vaccine clinics will continue in readiness for the state vaccine mandate
- SCUSD weekly COVID vaccine clinics & School Required IZ Clinic - restarting in August
- Shift to “up-to-date” on vaccinations with emphasis on 5+

## Filtration:

- Maintain all increased filtration in school and district buildings

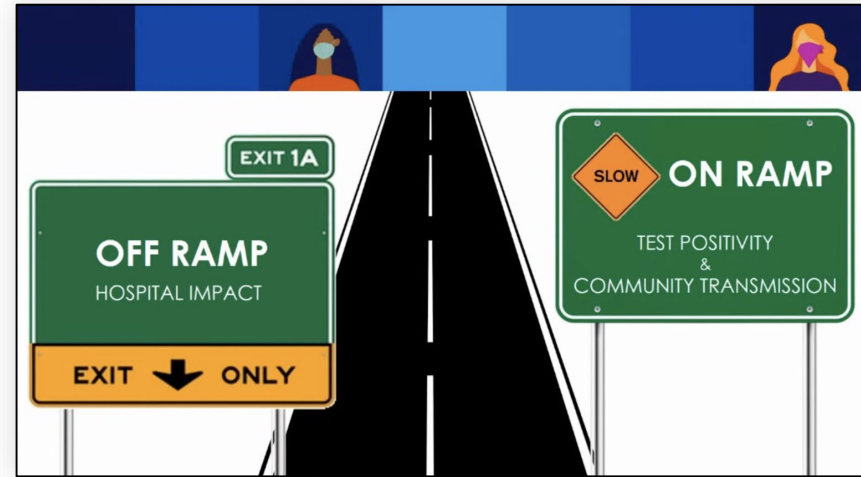
***Maintain readiness for the unknown***

# Face Masking Recommendation

## CDC Community Level Ratings:

- CDC Community Level ratings are revised on Thursdays
- Low & Medium levels - face masking strongly recommended indoors
- High level - face masks required indoors
- Current policy is to wait 2 weeks following CDC update before shifting from a mask requirement to a recommendation
- State or county public health order would supercede this local policy
- Staff recommends for the 22-23 school year revising the masking policy to the following Monday after CDC update is made to community spread level

## Managing COVID on and off ramps



# Vaccine & Testing Recommendations

**Align Vaccine Mandate with state timeline & continue Covid surveillance testing as indicated by public health guidance as resources allow**

- Continue school-based and district weekly vaccine clinics
- Use multiple strategies for testing based on recommended testing cadence:
  - In-school surveillance testing by trained staff *dependent on availability of CDPH staffing support*
  - At-Home Tests provided for surveillance testing or pre-entry testing dependent on availability
  - Maintain symptomatic or exposure testing through school site Care Rooms staffed by Health Aides

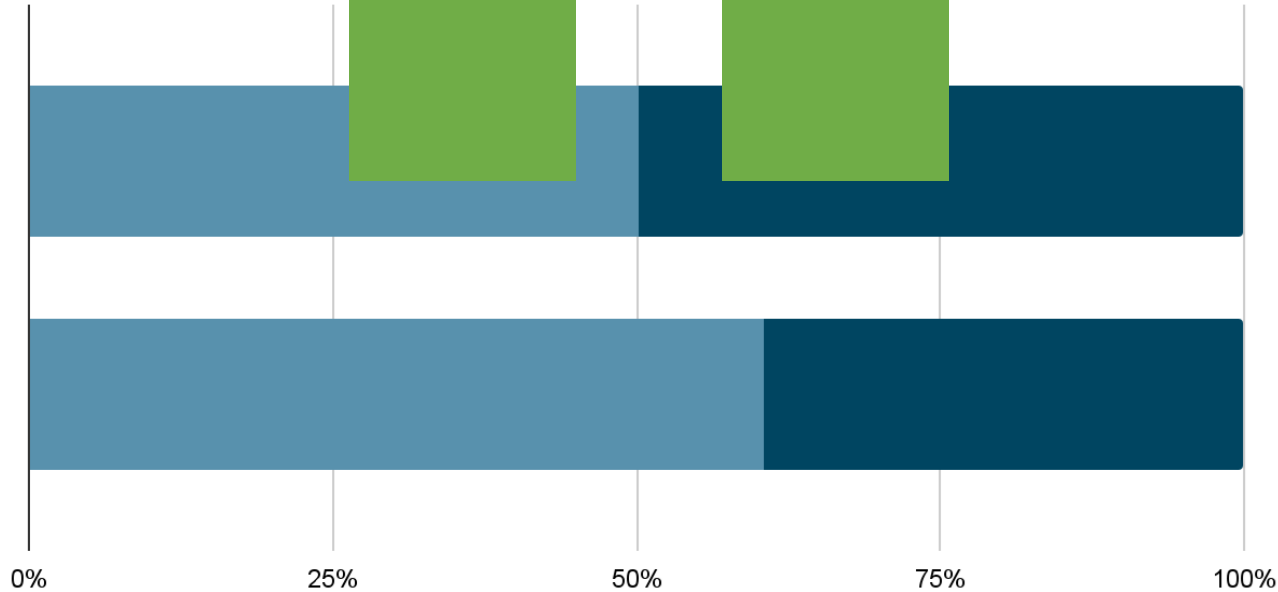
# Next Steps

- Come back to the Board with update on August 11, 2022
- Monitor conditions and adjust as needed over summer program
- Review and incorporate any revised CDC, CDPH or SCPH guidance/orders
- Continue implementing 22-23 Covid response for testing, vaccination and other mitigation measures
- Ongoing training for new and existing staff on Covid safety measures

Q & A

# COVID-19 Incident Y... ation & Testing Progress

Points scored



Jan

- 50.25% of
- 41.5% of



June

- 22
- 60.49% of
- 92.52% of