



# COVID-19 Update

August 11, 2022

**Presented by:**

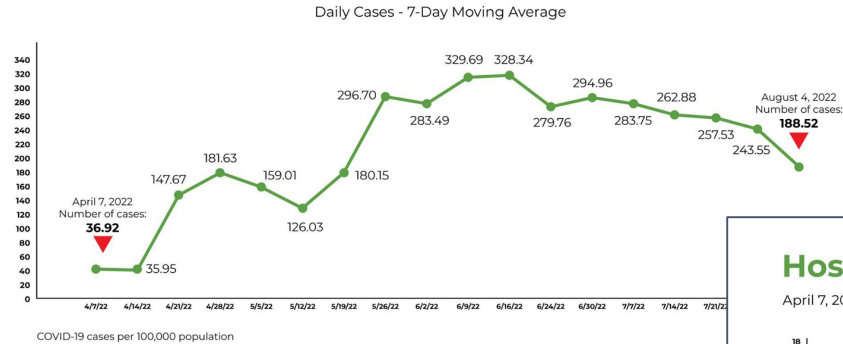
Victoria Flores, Executive Director Student Support & Health Services



# CDC Community Levels Data

## Total COVID Case Increase

April 7, 2022 - August 4, 2022



## Sacramento County, California

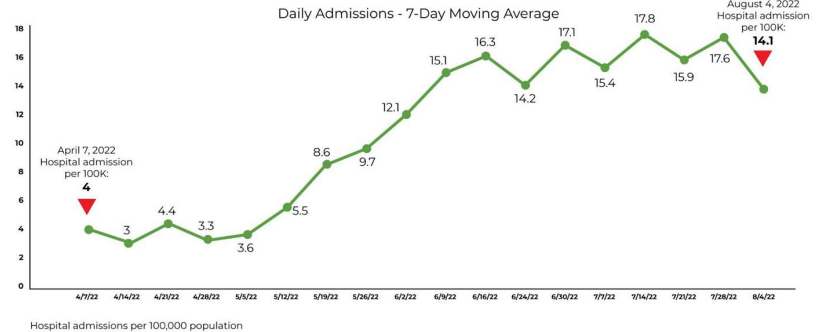
[State Health Department](#)

## COVID-19 Community Level

Medium

## Hospital Admissions Rate (Per 100,000)

April 7, 2022 - August 4, 2022



# COVID Updates

## Variants

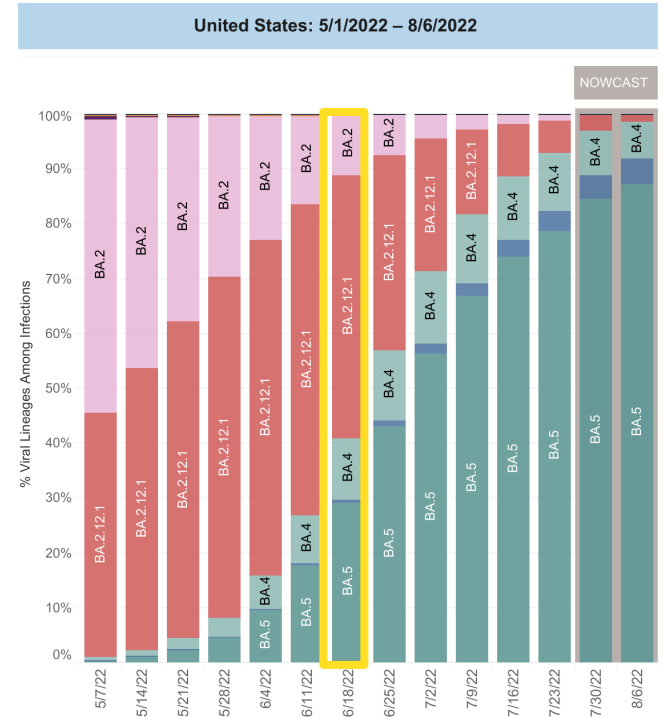
- BA.5 impacts - more transmissible summer surge
- Continue to test, stay home sick, isolate, face mask, ventilate, vaccinate and treat

## Vaccine

- Approval for children 6 months - 5 yrs for Moderna (2 doses) & Pfizer (3 doses)
- Full authorization for 12+ Pfizer
- Bivalent COVID-19 vaccine booster pending approval targeting BA.4 and BA.5 Omicron subvariants

## Test to Treat

- Positive for COVID-19 and are 12+ years of age and at risk of developing severe COVID-19



# CDC & CDPH Covid-19 Guidance

## **CDC Operational K-12 & Early Care and Education Guidance** (revised 8/11/22)

- Goal is to keep schools open and provide safe in-person learning
- Advises core set of infectious disease prevention strategies as part of normal operations
- Additional COVID-19-specific prevention strategies should be tied to COVID-19 Community Levels (i.e. high community level = indoor masking)
- No longer advising routine surveillance testing, quarantine/test to stay, or distancing

## **CDPH Testing Framework for 22-23 School Year** (8/2/22)

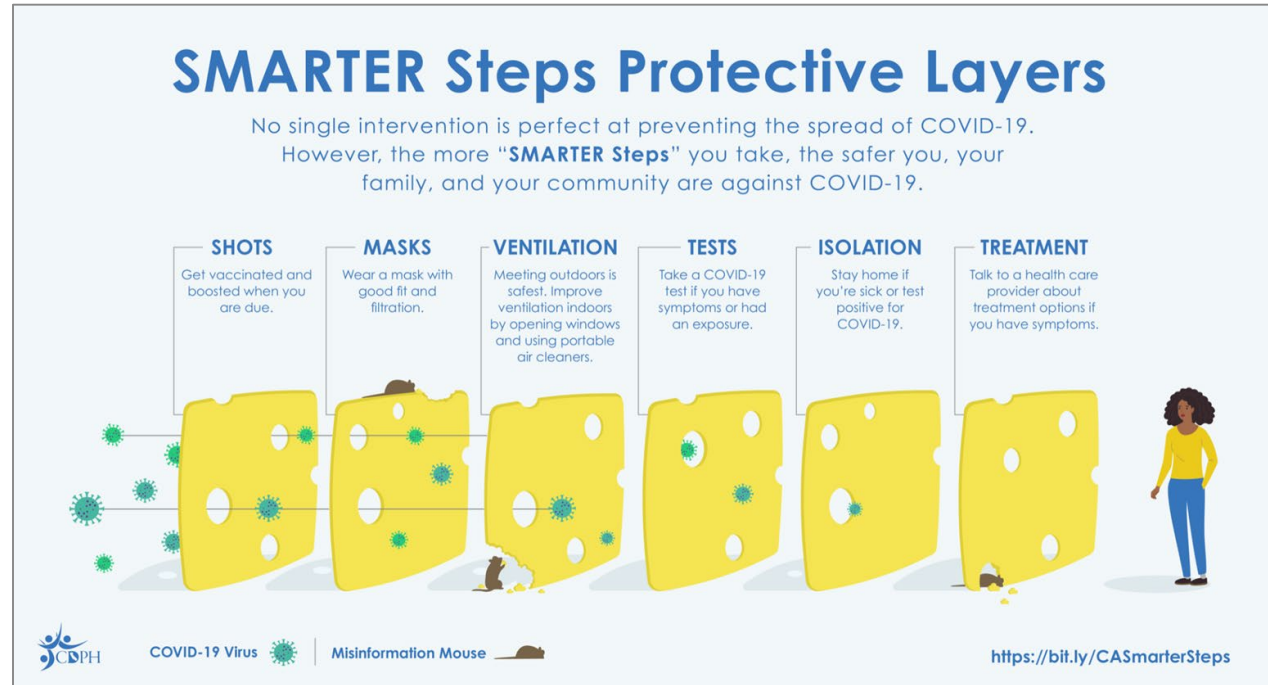
- At-Home/OTC test kits available for re-entry, symptomatic, exposure testing
- Asymptomatic Surveillance screening *only recommended for high-risk groups or activities* particularly during surges, outbreaks, or high transmission
- CDPH staffing support greatly limited - not available to SCUSD at this time
- CDPH expects OTC testing will meet more needs - available via health providers or government order

# CDPH Covid-19 Guidance

## 22-23 COVID-19 Guidance for K–12 Schools to Support Safe In-Person Learning (6/30/22)

*Disease management strategies in K–12 schools are guided by the principle that safe, in-person learning is critical to student well-being and development.*

*Guidance is based on current scientific knowledge and anticipated trends and is subject to change, as COVID-19 conditions can shift rapidly and our response in schools must remain nimble.*



# Vaccine & Testing Update

**Align Vaccine Mandate for students with state timeline & continue Covid testing as indicated by public health guidance and as resources allow**

- Continue weekly SCUSD Covid-19 Vaccine Clinic
- Testing strategies aligned with California Department of Public Health recommendations
  - At-Home Tests provided for symptomatic/exposure testing or re-entry testing dependent on availability
  - Maintain symptomatic or exposure testing through school site Care Rooms staffed by Health Aides
  - Regional Testing Centers remain open for students, staff and household members
  - CDPH *staffing support ended* - pivot to symptomatic, exposure, re-entry and high risk activity testing

[Vaccine Verification for Workers in Schools Health Order \(8/11/21\)](#) remains in effect for staff - staff must either be vaccinated or undergo at least weekly testing

# Community Level Trends & Face Masking

Hospital Adm per 100K	COVID Cases per 100K	CDC Level	Date Updated
16	156.5	Medium	2/24/2022
11.8	114.43	Medium	3/3/2022
8.3	85.89	Low	3/10/2022
8.6	22.04	Low	3/17/2022
5.5	43.94	Low	3/24/2022
4.9	44.01	Low	3/31/2022
<b>4.0</b>	<b>36.92</b>	<b>Low</b>	<b>4/7/2022</b>
3.0	35.95	Low	4/14/2022
4.4	147.67	Low	4/21/2022
3.3	181.63	Low	4/28/2022
3.6	159.01	Low	5/5/2022
5.5	126.03	Low	5/12/2022
8.6	180.15	Low	5/19/2022

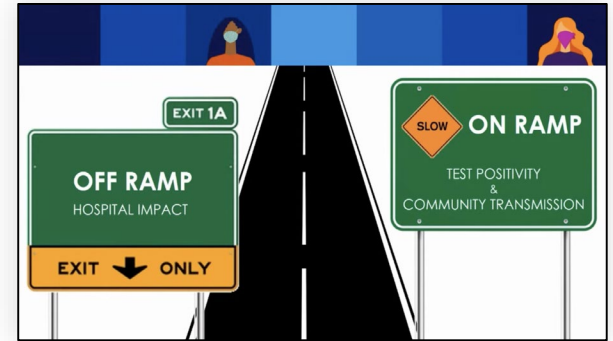
Hospital Adm per 100K	COVID Cases per 100K	CDC Level	Date Updated
9.7	296.7	Medium	5/26/2022
12.1	283.49	High	6/2/2022
15.1	329.69	High	6/9/2022
16.3	328.34	High	6/16/2022
14.2	279.76	High	6/23/2022
17.1	294.96	High	6/30/2022
15.4	283.75	High	7/7/2022
17.8	262.88	High	7/14/2022
15.9	257.53	High	7/21/2022
17.6	243.55	High	7/28/2022
14.1	188.52	Medium	8/4/2022



# Face Masking Recommendation

## CDC Community Level Ratings:

- Low & Medium levels
  - face masking *strongly recommended indoors*
  - currently in **Medium** level
- High level
  - face masking *required indoors*
  - SCUSD discretion during forecasts of fluctuating weekly levels to prevent confusion and disruptions
- Moving between required or recommended levels would occur the following Monday after the CDC community level is updated on Thursdays
  - current policy requires waiting two weeks after the CDC levels are updated
- *State or county public health order would supercede this local policy*





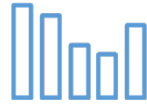
# 22-23 Covid-19 Mitigation

We can resume some normalcy *and* protect community members who are vulnerable to COVID-19



## EQUITY:

- COVID-19 is disproportionately affecting low-income, Latino, Black, Native American and Pacific Islander communities
- Efforts & funding will continue addressing disparities and removing barriers to accessing care, services and supports



## METRICS:

- Monitor hospitalization rates, case rates, county levels (CDC)
- Maintain SCUSD Covid Case Dashboard
- Local metrics provide individuals information to assess personal risk and personal actions for protecting their health



## HEALTH AIDES:

- Provide site-based testing, health screening, Care Room support, contact tracing support, immunization compliance, and other health related and COVID recovery duties



## TESTING:

- School-based testing & Regional Centers provides equitable access to testing
- Site-based testing of symptomatic or exposed individuals and providing at-home testing kits as available
- Regional testing centers serving most impacted communities

# 22-23 Covid-19 Mitigation

## Contact Tracing:

- Continue contact tracing to track and stop the spread of COVID
- Focus on layered mitigation measures to keep students in school after an exposure

## Masking:

- Targeted and risk-based masking requirements that are loosened or tightened based on changing conditions
- Maintain ongoing stock of high quality masks for required or voluntary masking

## Vaccination:

- SCUSD weekly COVID vaccine clinics & School Required IZ Clinic - starting in August
- School-based vaccine clinics will continue in readiness for expected variant surges & state mandate
- Shift to “up-to-date” on vaccinations with emphasis on 5+

## Filtration:

- Maintain all increased filtration in school and district buildings

***Maintain readiness for the unknown***

# Testing in Action for 22-23

- Care Room testing available during the school day at all schools
  - Symptomatic or exposure testing, assisting with distributing At-Home test kits
- Weekly testing provided to Departments located outside of Serna
- Weekly testing day provided at secondary schools for high risk activities or populations as indicated by CDPH (i.e. activities such as band/orchestra or athletics)
- 3 Regional Testing Centers available with am/pm hours open to students/staff and their household members
  - Serna, Meadowview & Albert Einstein MS
- Routine distribution of At-Home Covid Test Kits at all schools/departments for re-entry from holidays, symptomatic or exposure testing at home - based on availability
  - For example all schools/departments receiving allocation of At-Home test kits the week of Aug 15-19 to distribute to students/staff before returning, the Labor Day holiday, and stocking the Care Room

# Next Steps

- Continue monitoring conditions and adjusting measures as needed
- Review and incorporate any revised CDC, CDPH or SCPH guidance or orders
- Continue implementing Covid response for testing, vaccination and other mitigation measures
- Provide ongoing training for new and existing staff on Covid safety measures

Q & A