

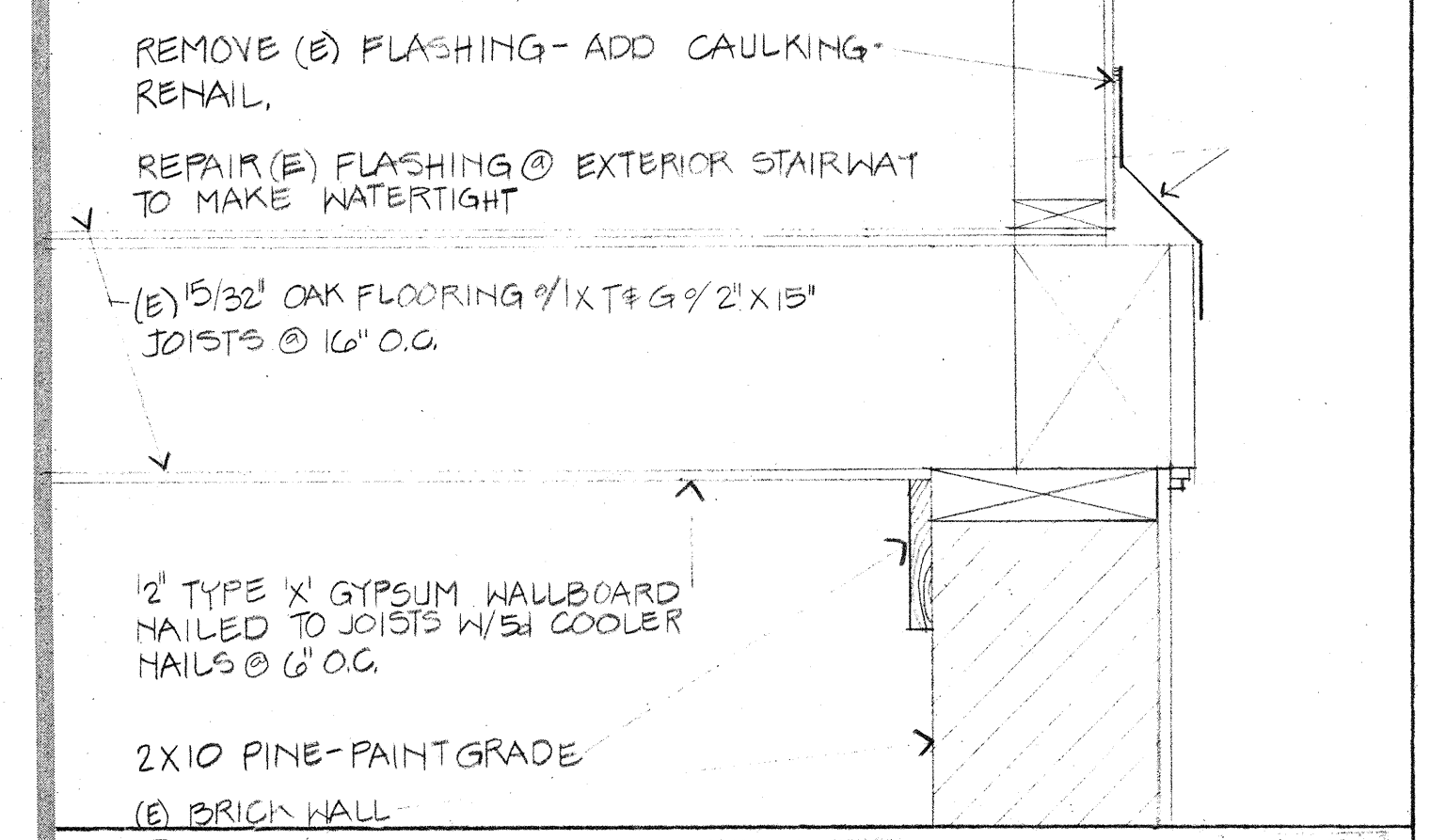
- Windows marked with an "A" are to be operable, single paned windows. Repair or replace as needed. Repair or replace existing trim. Remove loose, flaky or chipped paint. Prepare for new paint.
- Windows marked with a "B" are to be fixed, and protected with overhead fire sprinkler.
- Existing plumbing fixtures at upper floors shall be kept in service. Reconnect hot water lines from new water heater to existing hot water lines. Reconnect cold water line from existing service to existing cold water line. Verify exact locations of services in field. Cap all unused piping.
- Adequately shore all structure before removing load bearing structure. Verify with Architect.
- Extend all existing downspouts to at least 12" away from building.
- All exposed ducts shall have flat seams. All ductwork that penetrates the one hour construction to be fire dampered.
- Mount outdoor units on 4" high concrete pad. Coordinate exact location with Architect.
- Provide drawings of new sprinkler head location for submittal to the City Fire Marshall and review by the Architect.
- New A.S.H. shall have 165°F ratings. All work shall conform to NFPA #13.
- Coordinate duct runs with existing sprinkler lines. Modify ducts as required. In mechanical room, relocate A.S.H. to miss new ducts.
- Locate room thermostat at location directed by Owner.
- Parge existing brick walls, drypack with a mixture of cement and sand to fill cracks.

- PLUMBING FIXTURES: SUBMIT FIXTURE CUTS
  - Wall mounted, faucet lavatory Toilet A: Kohler K-3200, 3 foot length. Provide with tempered faucets.
  - Water Closet Toilet A: Eljer Kindergarten 111-0330, provide with Estate Tank, bolt edges, seat to fit, 802-0225.
  - Urinal Toilet A: American Standard Trimbrook, 6560.015.
  - Lavatory in Classrooms: Elkay Lusterstone LR-2522, provide with tempered faucets.
  - Lavatory in Kitchen: American Standard 7044.019 - 3 hole, 4200.010 faucet, 4331.013 strainers, American Standard 4419.040 P-trap.
  - Water Closet: AS 2131.134 Water Saver Plebe, Church No. 5330.022 seat, bolt caps, 3405.016 supply.
  - Lavatory in Toilet B: American Standard 0321.075 Declyn Delta 520 faucet.
  - Drinking Fountain: American Standard Saratoga 8310.120, mount with bubbler at 24" above finish floor.
  - Service Sink: American Standard Florwell 7740.020 with rim guard 7745.011.
- MECHANICAL DRAWINGS TO BE SUBMITTED TO ARCHITECT FOR REVIEW:
  - Heating Requirements: Classroom A combined 2000 cfm, Classroom B, Classroom C 650 cfm, Classroom D 800 cfm.
  - Cooling Requirements: Classroom A 3000 cfm, Classroom B 3000 cfm, Classroom C 1800 cfm, Classroom D 2100 cfm.

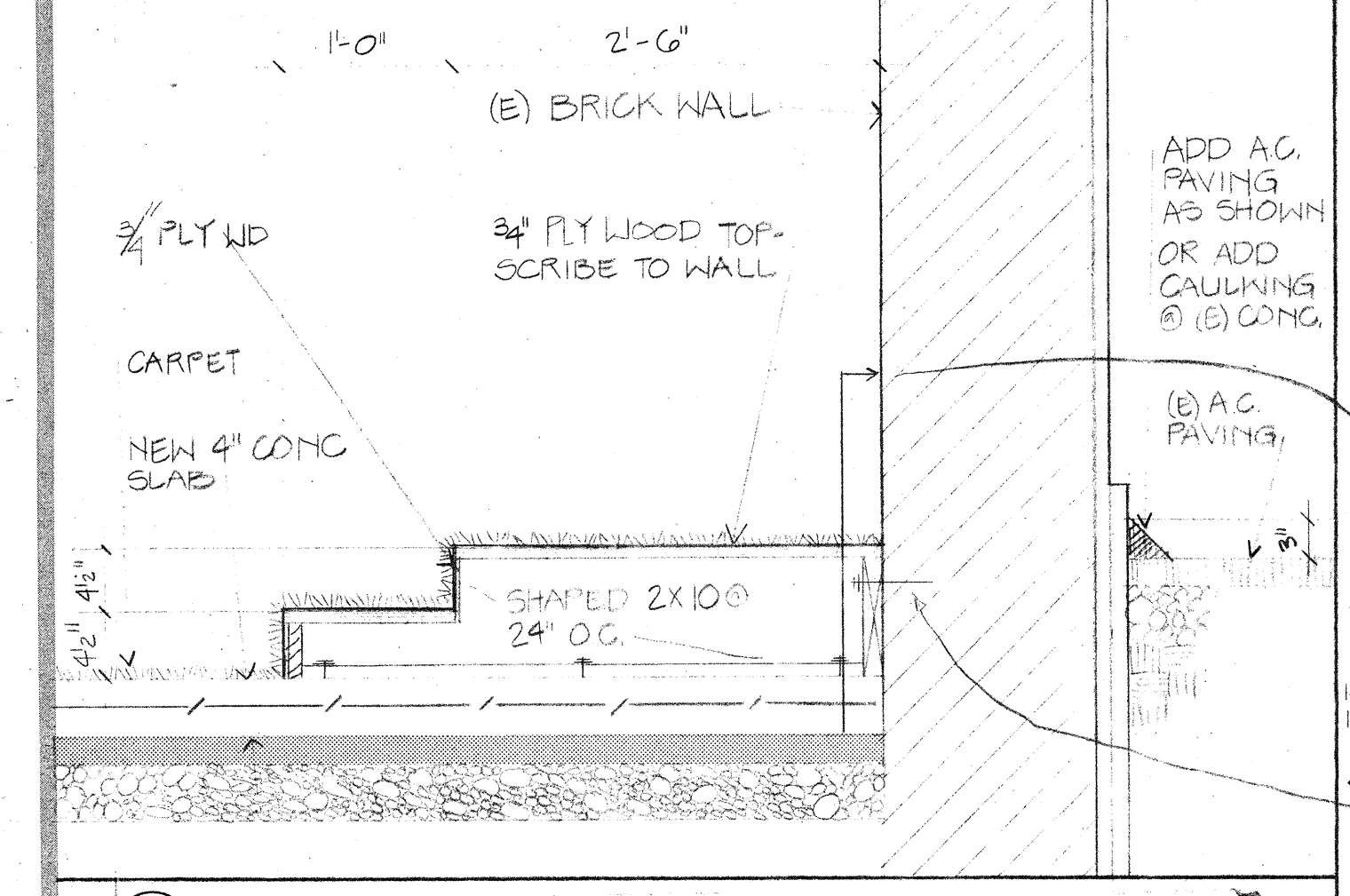
**NOTES**

1 SECTION @ RAMP 1" = 1'-0"

4 ELECTRIC WATER HEATER 1" = 1'-0"

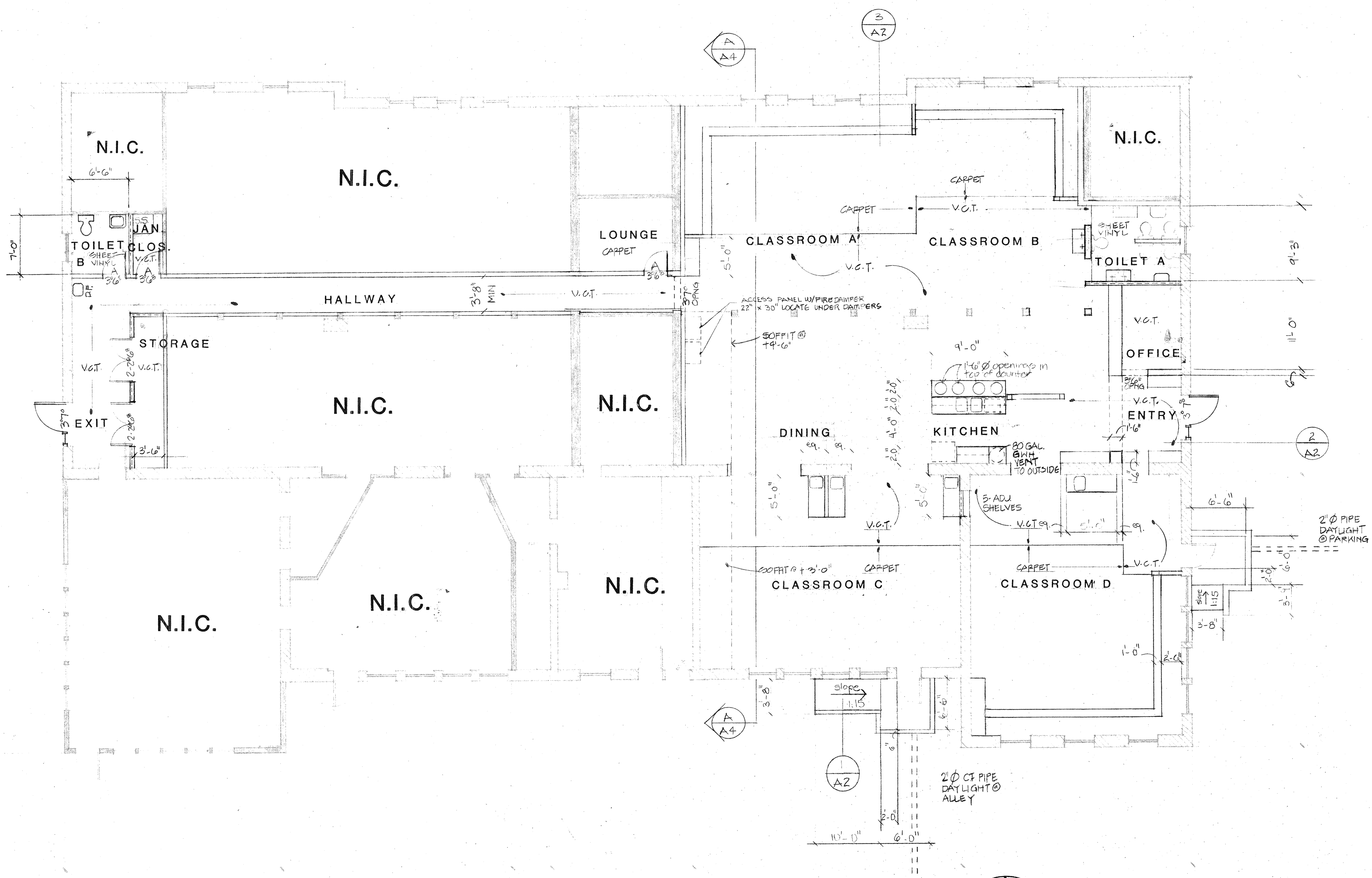


2 DETAIL @ TOP OF (E) BRICK WALL 1" = 1'-0"



3 DETAIL @ PLATFORM 1" = 1'-0"

- EXISTING BRICK WALL
- EXISTING WOOD FRAMING CONSTRUCTION
- ADD 5/8" TYPE (X) GYP BD EA SIDE TO (EXISTING) CONSTRUCTION
- 2x4 AT 16" O.C. W/ 5/8" GYP BD EA SIDE
- 2x4 AT 16" O.C. W/ 1/2" GYP BD EA SIDE



**FLOOR PLAN**

1/8" = 1'-0"

