

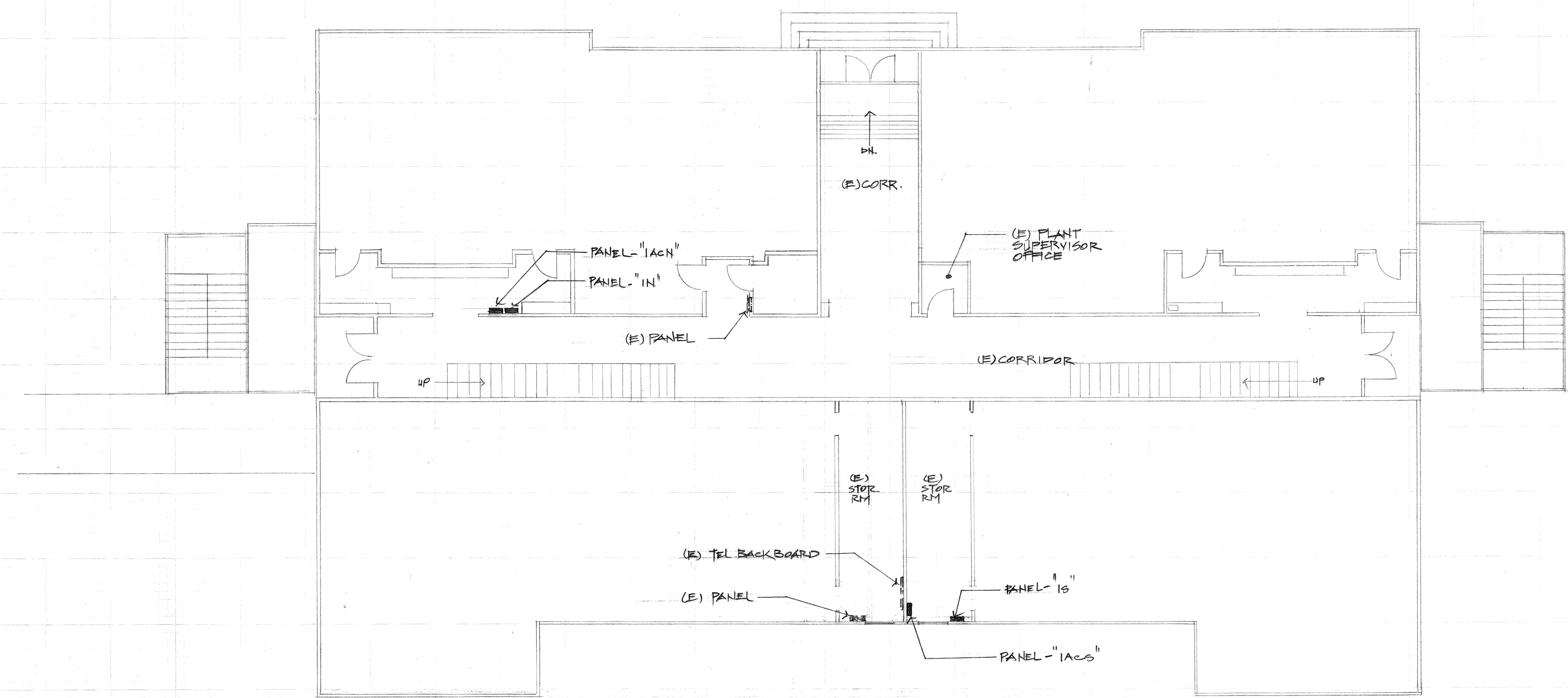
REVISIONS	BY

A.C. SYSTEMS ENGINEERING, INC.
 CONSULTING ELECTRICAL ENGINEERS
 5457 DIABLO DRIVE SACRAMENTO, CALIFORNIA 95842
 (916) 385-4000 FAX (916) 385-0552
John O'Brien
 E-316 Job No. 93116

SACRAMENTO CITY UNIFIED SCHOOL DISTRICT
 425 FIRST AVE. SACRAMENTO, CA.

OLD MARSHALL SCHOOL
 2718 "G" STREET
 SACRAMENTO, CA.

DATE	4/7/73
SCALE	1/8" = 1'-0"
DRAWN	W.Y.
JOB	93116
SHEET	E-3
OF 5 SHEETS	



A
E-3 EXISTING FIRST FLOOR PLAN - "POWER"
 SCALE: 1/8" = 1'-0"

