



a presentation to the
Sacramento City Unified School District &
City of Sacramento

Site Master Plan Studies School of Engineering and Sciences



SCHOOL OF ENGINEERING AND SCIENCES



Existing Site Analysis

- Front door or main entry should be on Gloria Drive.
- Be sensitive to neighboring homes, especially those on Swale River Way.
- If possible, maintain existing baseball diamond.
- CDE requires that student accessible areas be separated 150' from SMUD property.
- Parking: 40 (School Staff), 120 (Students – ½ of 11th and 12th), and 60 (Library at 1/250 sf). Estimated total need (to be verified) = 220. No additional on site parking is being considered for play fields (after hours soccer increases parking demand).
- Best location for the Library is on the corner of Swale River Way and Gloria Drive.
- The site requires a coordinated trash enclosure plan that resolves School and City requirements.
- Kitchen delivery (noise and view) should be oriented away from neighboring homes.
- Parks and Recreation to assist in determining program for grass play fields



SCHOOL OF ENGINEERING AND SCIENCES



Site Master Plan 1

- Front door on Gloria Drive.
- Requires moving existing baseball diamond north, but outfield will be too short.
- Compact school courtyard.
- 203 parking spaces. Too much parking seen from Swale River homes.
- Multi-Purpose/Kitchen is oriented away from Swale River.

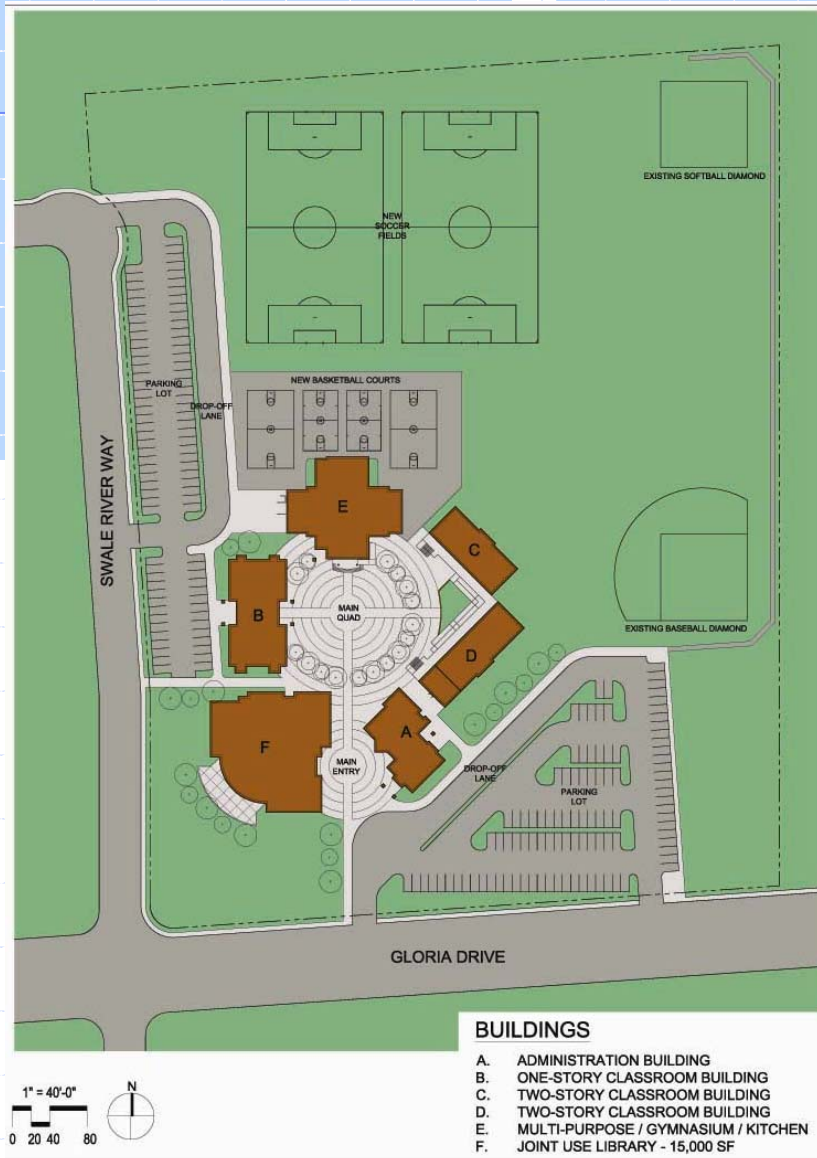


SCHOOL OF ENGINEERING AND SCIENCES



Site Master Plan 2

- Front door on Gloria Drive.
- Existing baseball diamond can remain, but outfield will be too short.
- Large main courtyard.
- 194 parking spaces. Too much parking seen from Swale River homes.
- Multi-Purpose/Kitchen is oriented towards Swale River.



SCHOOL OF ENGINEERING AND SCIENCES



Site Master Plan 3

- Front door on Gloria Drive.
- Requires moving existing baseball diamond north, but outfield will be too short.
- Symmetrical courtyard.
- 203 parking spaces.
- Multi-Purpose/Kitchen is oriented away from Swale River.

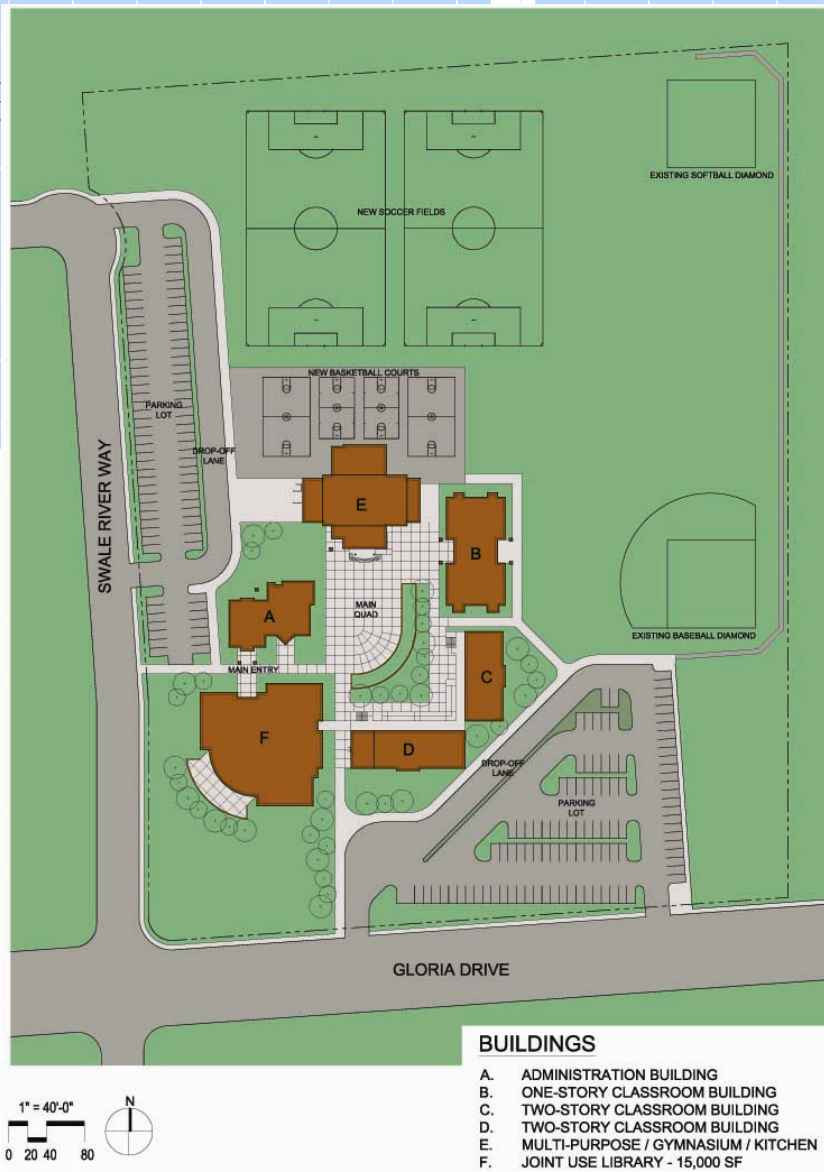


SCHOOL OF ENGINEERING AND SCIENCES



Site Master Plan 4

- Front door on Swale River.
- Existing baseball diamond can remain, but outfield will be too short.
- Elongated courtyard.
- 188 parking spaces.
- Multi-Purpose/Kitchen is oriented toward Swale River.



SCHOOL OF ENGINEERING AND SCIENCES



Site Master Plan 5

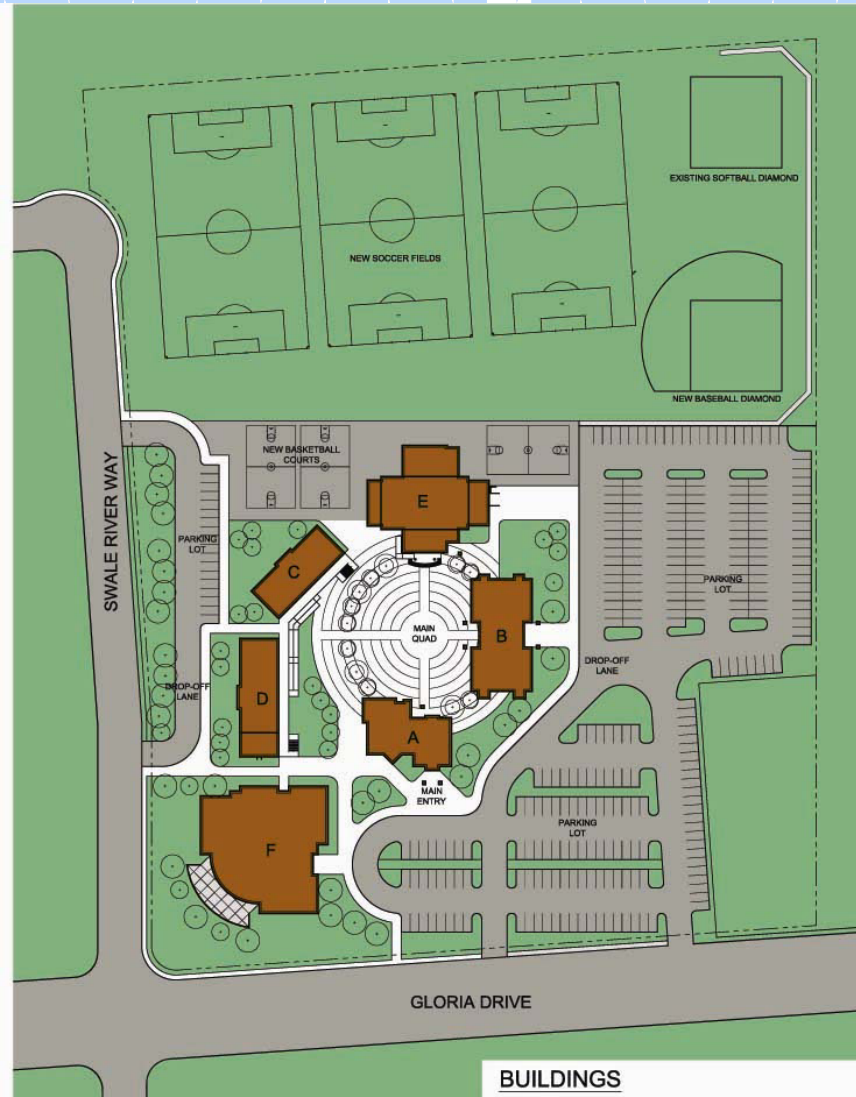
- Front door on Gloria Drive.
- Athletic fields are continuous. Easy to monitor.
- Compact courtyard.
- Most of the parking is oriented away from homes – 243 total.
- Some parking could be eliminated from Swale River. Drop-off should still be considered.
- Offers best school separation from SMUD property.



SCHOOL OF ENGINEERING AND SCIENCES

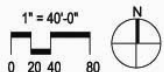


Site Master Plan 6



BUILDINGS

- A. ADMINISTRATION BUILDING
- B. ONE-STORY CLASSROOM BUILDING
- C. TWO-STORY CLASSROOM BUILDING
- D. TWO-STORY CLASSROOM BUILDING
- E. MULTI-PURPOSE / GYMNASIUM / KITCHEN
- F. JOINT USE LIBRARY - 15,000 SF



- Front door on Gloria Drive.
- Athletic fields are continuous. Easy to monitor.
- Large courtyard.
- Most of the parking is oriented away from homes – 298 total.
- Some parking could be eliminated from Swale River. Drop-off can remain.
- Separate Library drop-off and parking lot.
- Offers best school separation from SMUD property.

SCHOOL OF ENGINEERING AND SCIENCES

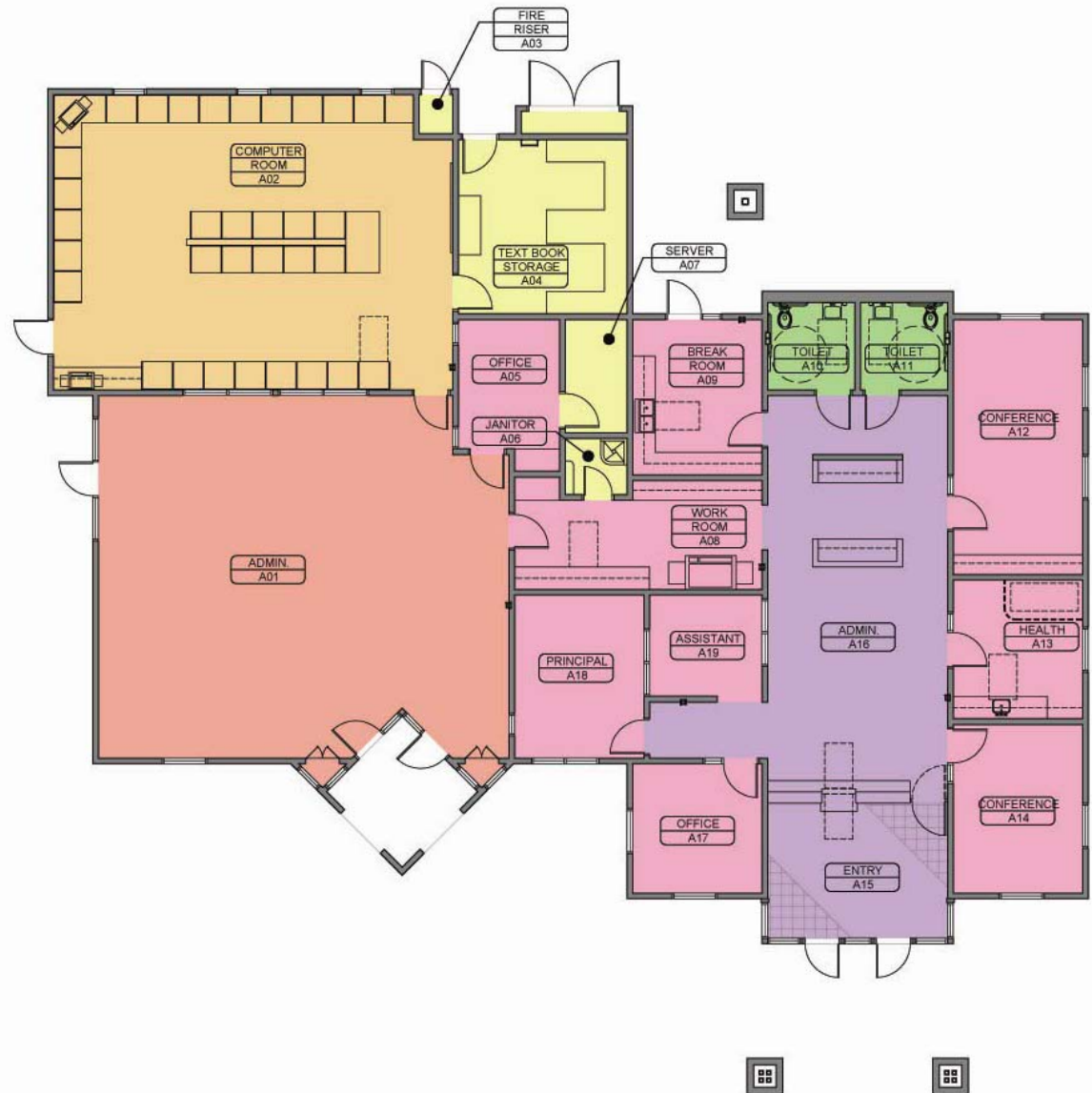


BUILDING A

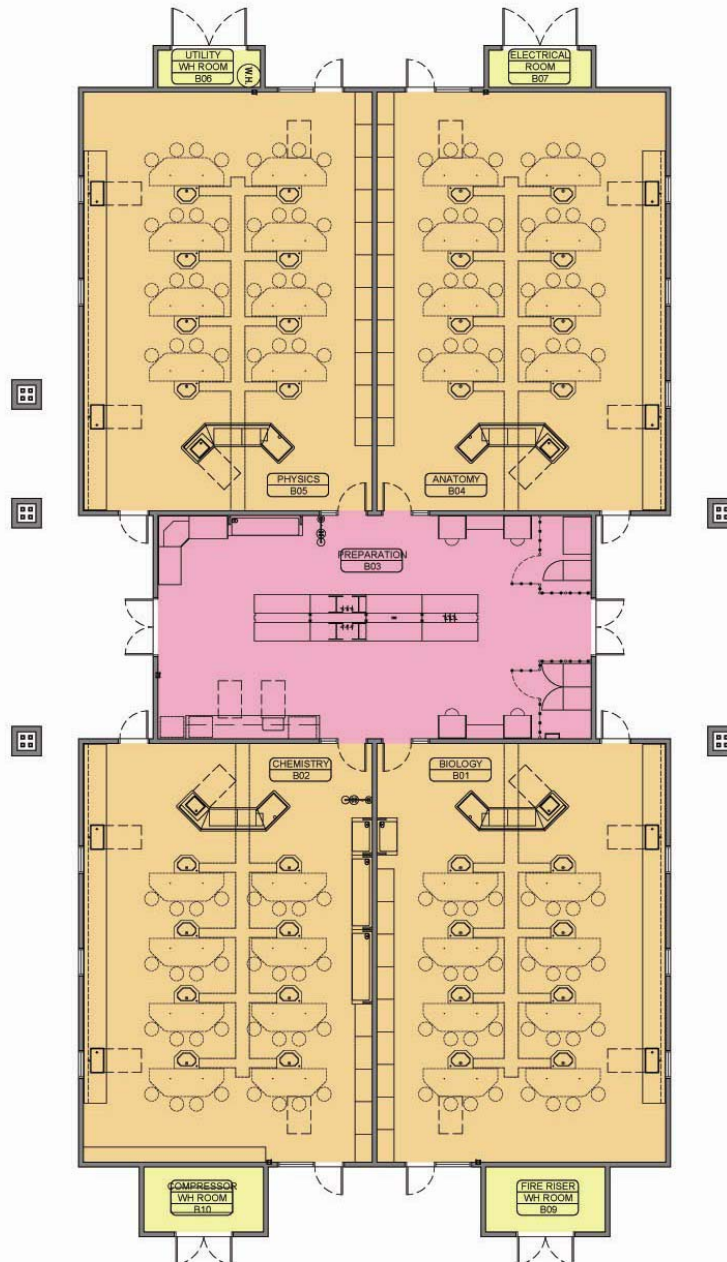
ADMINISTRATION

5,160 SF

(ONE STOREY)



SCHOOL OF ENGINEERING AND SCIENCES



BUILDING B

LAB/CLASSROOMS

7,000 SF

(ONE STOREY)



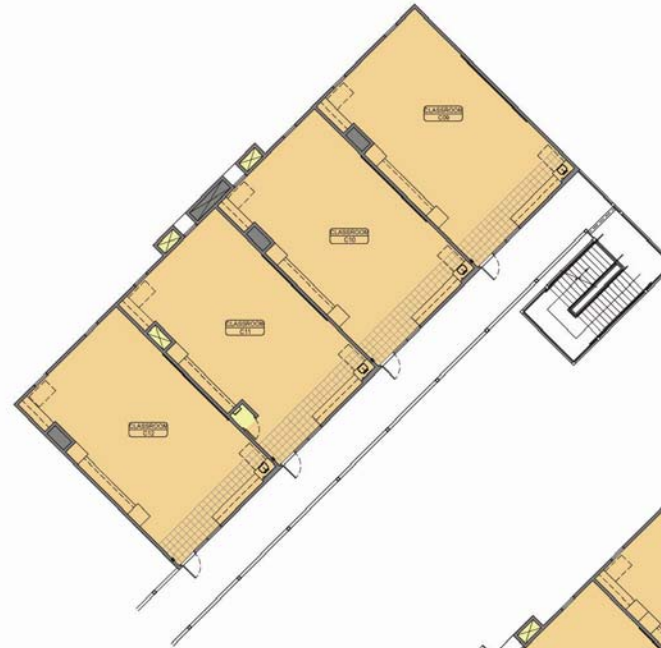
SCHOOL OF ENGINEERING AND SCIENCES

BUILDING C

CLASSROOMS

7,880 SF

(TWO STOREY)



SECOND FLOOR PLAN



FIRST FLOOR PLAN

SCHOOL OF ENGINEERING AND SCIENCES

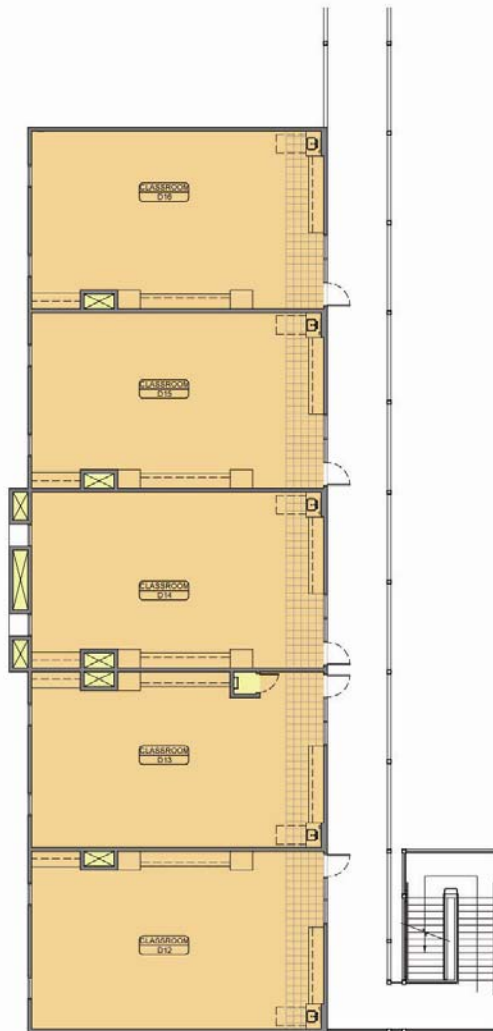


BUILDING D

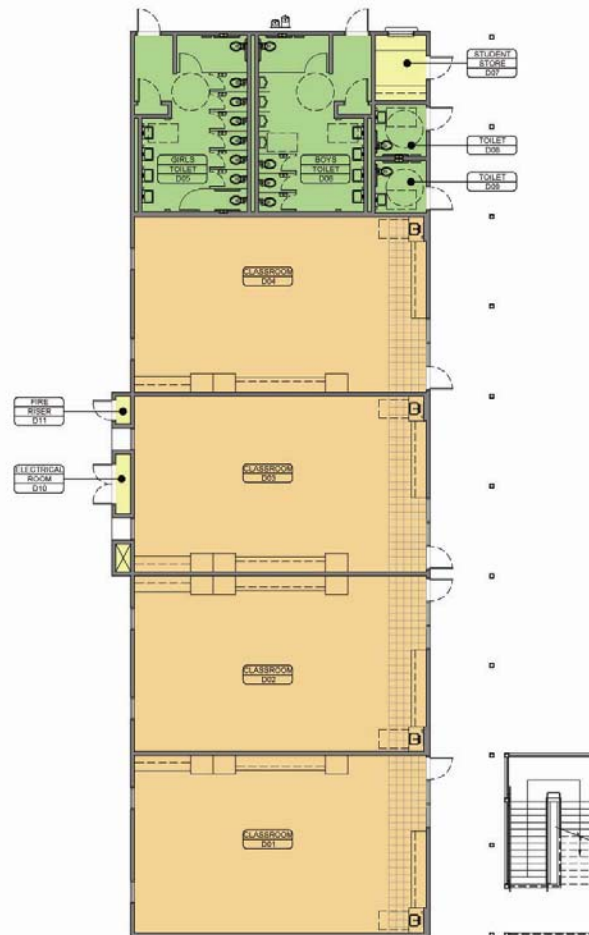
CLASSROOMS

9,760 SF

(TWO STOREY)



SECOND FLOOR PLAN



FIRST FLOOR PLAN

SCHOOL OF ENGINEERING AND SCIENCES

BUILDING E

MULTI-PURPOSE

GYMNASIUM

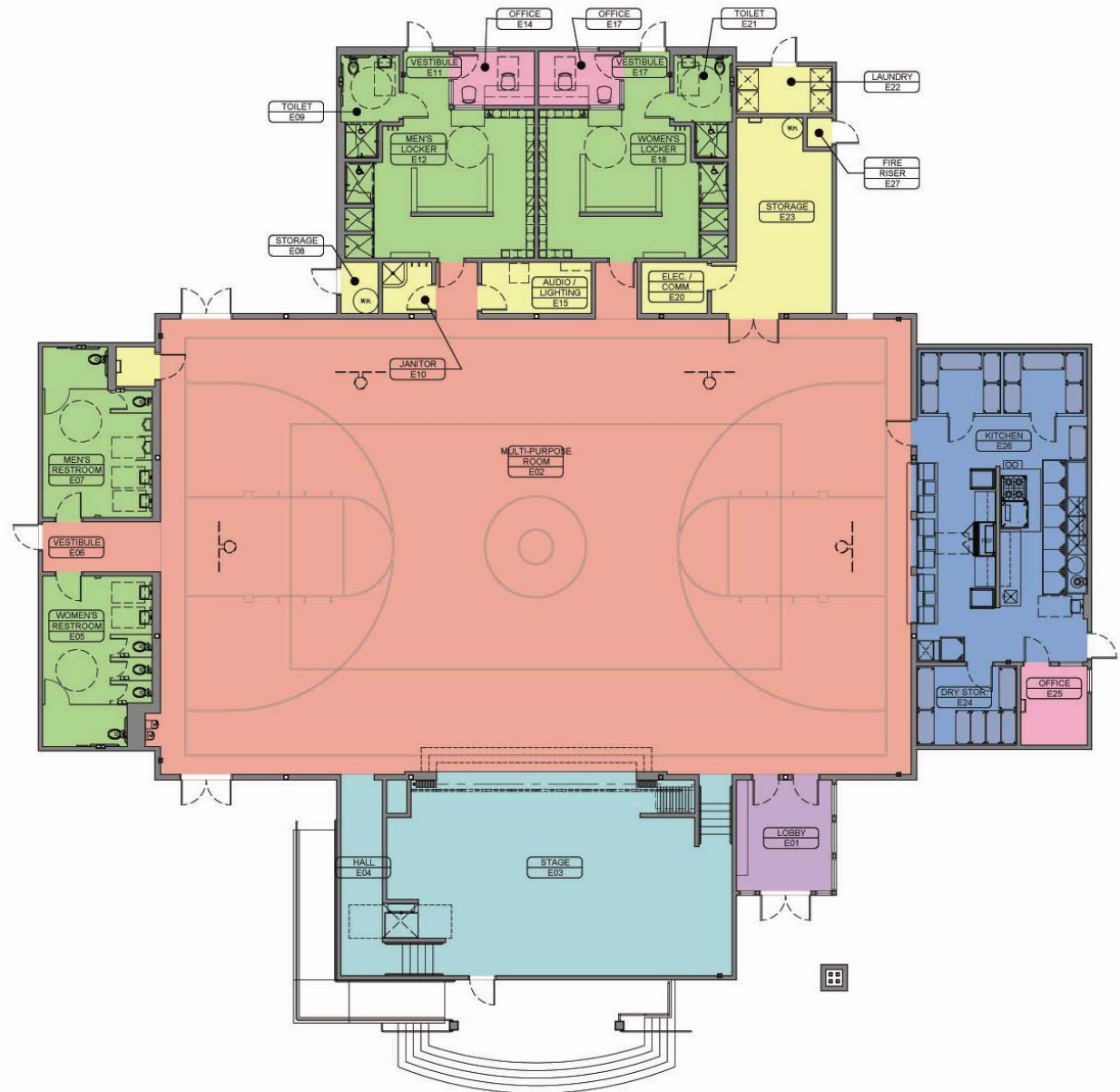
LOCKER ROOMS

KITCHEN

PLATFORM

9,900 SF

(ONE STOREY)



SCHOOL OF ENGINEERING AND SCIENCES



View from entry looking at the Administration Office



SCHOOL OF ENGINEERING AND SCIENCES



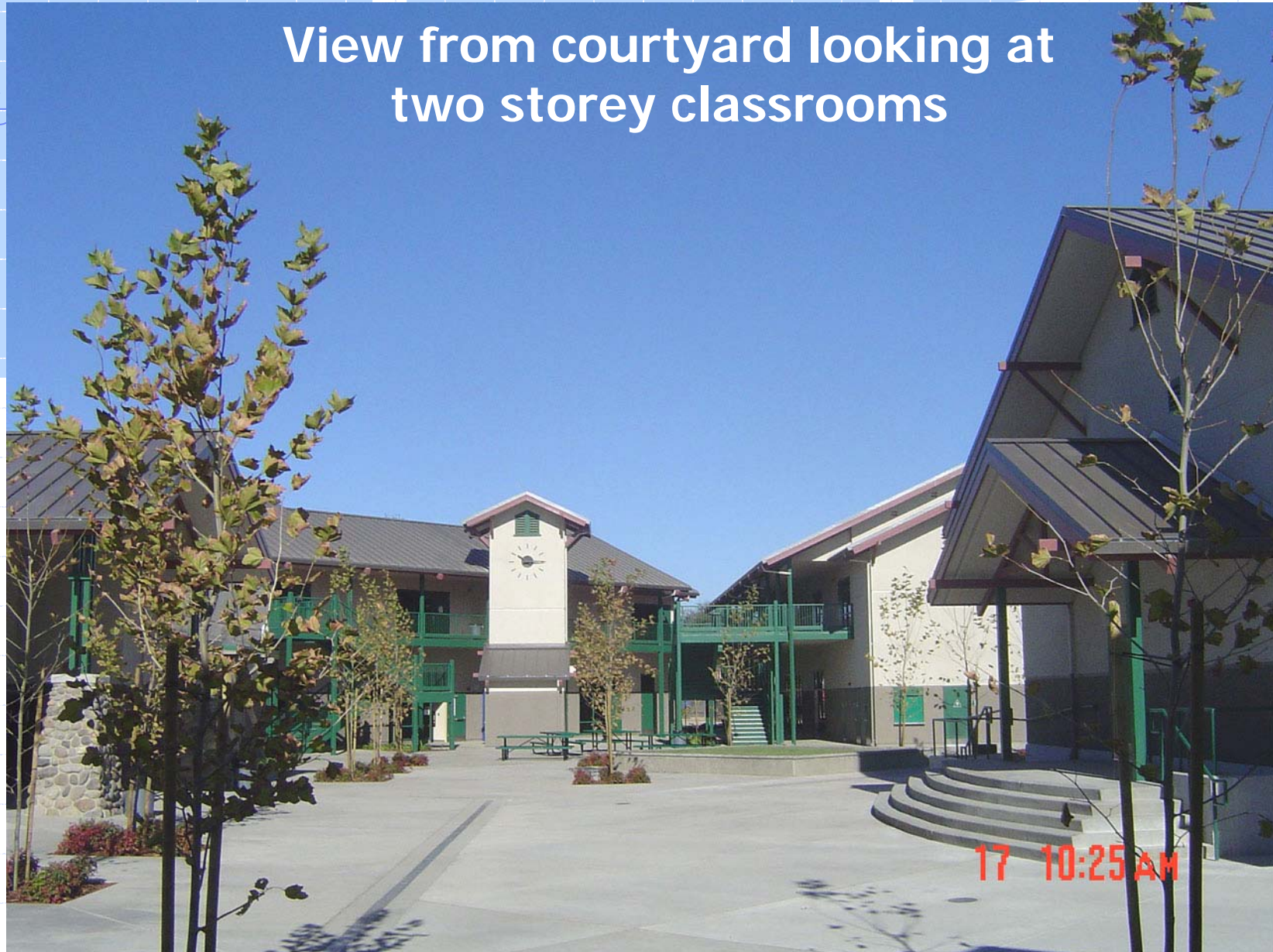
Entry to the Administration Office



SCHOOL OF ENGINEERING AND SCIENCES



View from courtyard looking at
two storey classrooms



WLC ARCHITECTS, INC

FOLSOM, CALIFORNIA

SCHOOL OF ENGINEERING AND SCIENCES



Two storey classroom



SCHOOL OF ENGINEERING AND SCIENCES



One storey classroom



WLC ARCHITECTS, INC

FOLSOM, CALIFORNIA

SCHOOL OF ENGINEERING AND SCIENCES



Courtyard



17 10:18 AM

SCHOOL OF ENGINEERING AND SCIENCES



View from courtyard looking at one and two storey classrooms



SCHOOL OF ENGINEERING AND SCIENCES



View from courtyard looking at the outdoor stage





SCHOOL OF ENGINEERING AND SCIENCES

