



Student Support and Health Services (SSHS)

The SSHS department helps to promote the academic success of students by integrating the efforts of schools, families, non-profit organizations, business, government agencies and community members.



Mission

Dedicated to academic success, Student Support and Health Services offers a wide range of social, emotional, and health resources to help students thrive. We promote attendance and a positive school climate by focusing on the whole child, providing critical support services and removing barriers to learning.

Programs

- Student Support Centers
- The Connect Center
- Health Services
- School Climate & Bullying Prevention
- Homeless Services



Board of Education

Darrel Woo

President, Area 6

Christina Pritchett

1st Vice President, Area 3

Jay Hansen

2nd Vice President, Area 1

Gustavo Arroyo

Area 4

Ellen Cochran

Area 2

Diana Rodriguez

Area 5

Jessie Ryan

Area 7

Student Member

Administration

José L. Banda

Superintendent

Victoria Flores, MSW

Director III, Student Support and Health Services



Sacramento City Unified School District

Student Support and Health Services Department

5735 47th Avenue, Sacramento, CA 95824

(P) 916-643-9413 (F) 916-399-2028

SCUSD does not discriminate against any student based on actual or perceived ancestry, age, color, disability, gender, gender identity, gender expression, nationality, race or ethnicity, religion, sex, sexual orientation, or association with a person or a group with one or more of these actual or perceived characteristics.

09/2015



Student Support and Health Services



Promoting learning by supporting the health and well-being of all students

Site-Based Student Support Centers

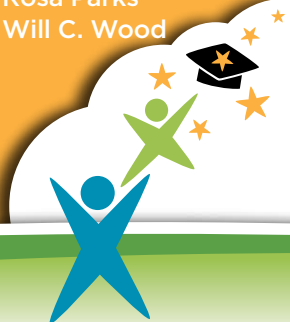
Critical interventions impacting the whole child.

Student Support and Health Services (SSHS) operates 20 Student Support Center (SSC) campuses across SCUSD. SSCs leverage student and family strengths with community resources to meet mutually-identified goals for students struggling with academics, behavior and/or social-emotional concerns. SSCs provide a breadth of safety-net services including:

- Basic needs assistance
- Case management and home visitation
- Crisis intervention
- Mental health counseling
- Mentoring and tutoring
- And much more

School Campuses with SSCs include:

A.M. Winn	Isador Cohen
Abraham Lincoln	John Bidwell
Bowling Green	John D. Sloat
Bret Harte	John Still
Caroline Wenzel	Oak Ridge
C.K. McClatchy	Pacific
Earl Warren	Parkway
Edward Kemble	Rosa Parks
Elder Creek	Will C. Wood
Ethel Phillips	
Fr. Keith B. Kenny	
Hiram Johnson	



District-Wide Services

Resources for all students and their families.



The Connect Center

916-643-2354

Sacramento City Unified School District's Connect Center is a centralized student support center that serves as a "gateway" to critical support services for students and families. Services include:

- Case Management Services
- LGBTQ Support Services
- Health Insurance Enrollment

Health Services

916-643-9412

Using the CDC's Coordinated School Health model, Health Services works with students, families and school staff to ensure that students are healthy and ready to learn. Services include:

- Health education and screenings
- Coordinated care for student chronic health conditions
- Home and Hospital program



School Climate and Bullying Prevention

916-643-9076

In July 2011, SCUSD adopted a comprehensive bullying prevention program focused on reducing bullying and harassment of students district-wide. In addition to training district personnel, parents and students, the program uses a systemic, tiered approach and works to implement positive school climate programs while addressing incidences of bullying.

Homeless Services

916-277-6892

The Homeless Services program supports the enrollment, attendance and achievement of SCUSD's homeless students to ensure they receive equal access to educational opportunities. Services include:

- Housing and community referrals
- Emergency transportation assistance
- Hygiene and school supplies
- Health/immunization support

Additional SSHS Supports

916-643-9252

- Mental Health services
- Section 504 Accommodations
- Student Chronic Absence project