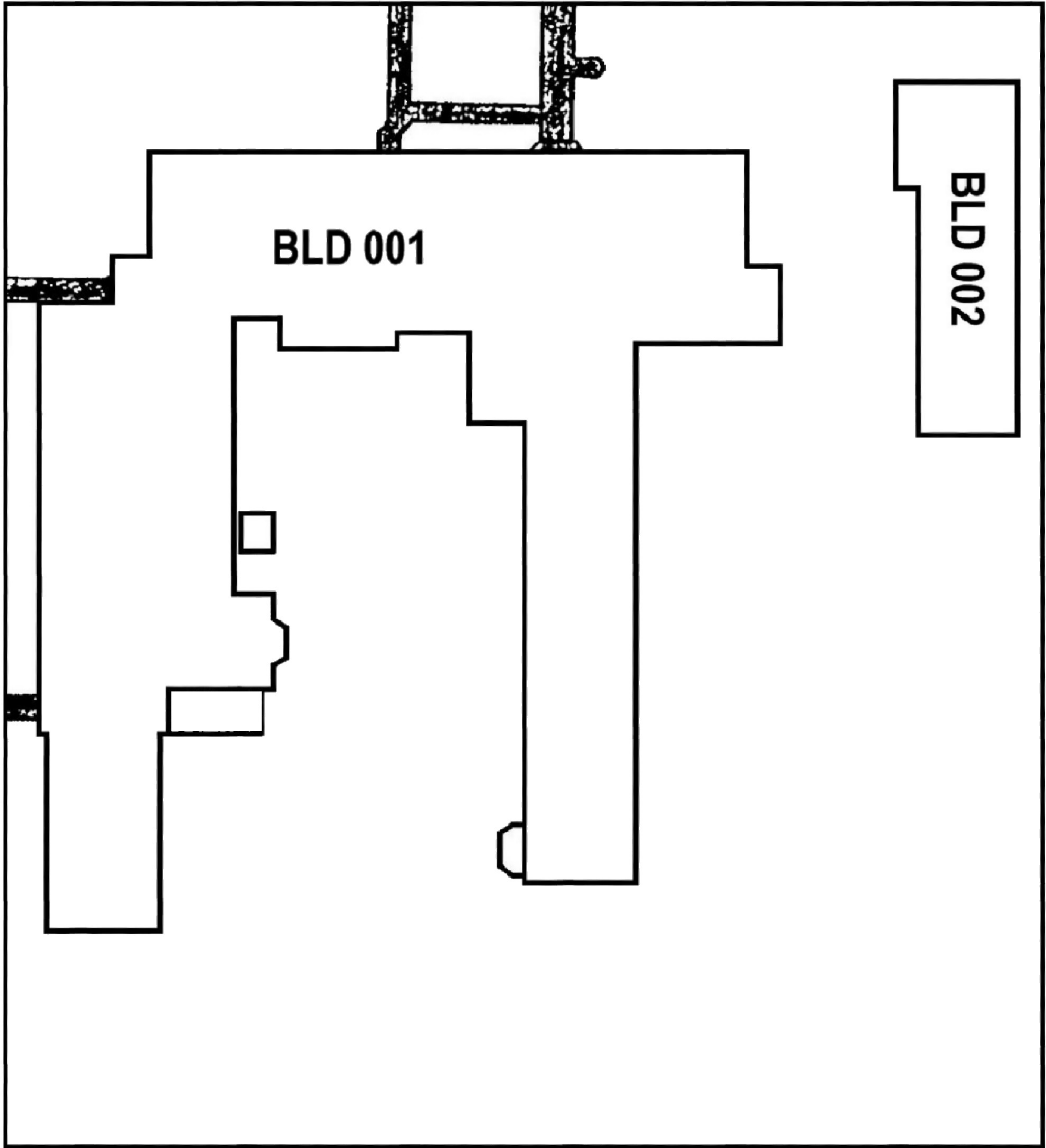


N STREET



BLD 001

BLD 002

26th STREET

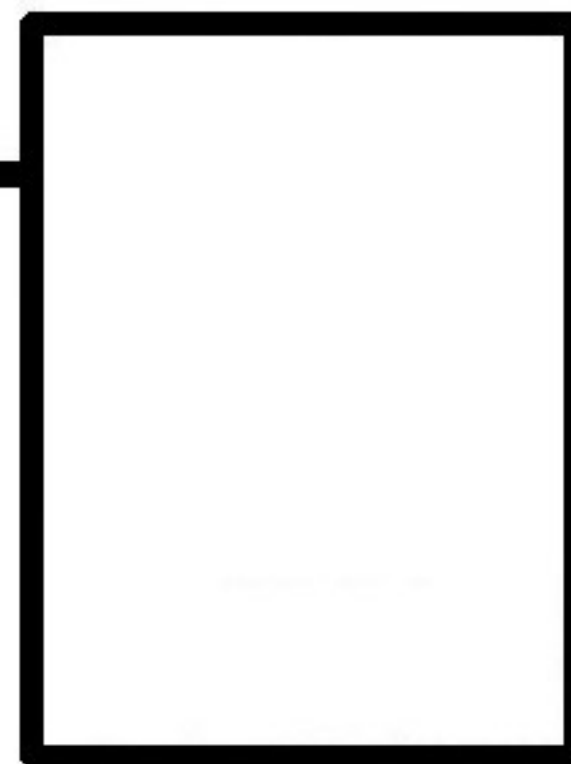
25th STREET

O STREET



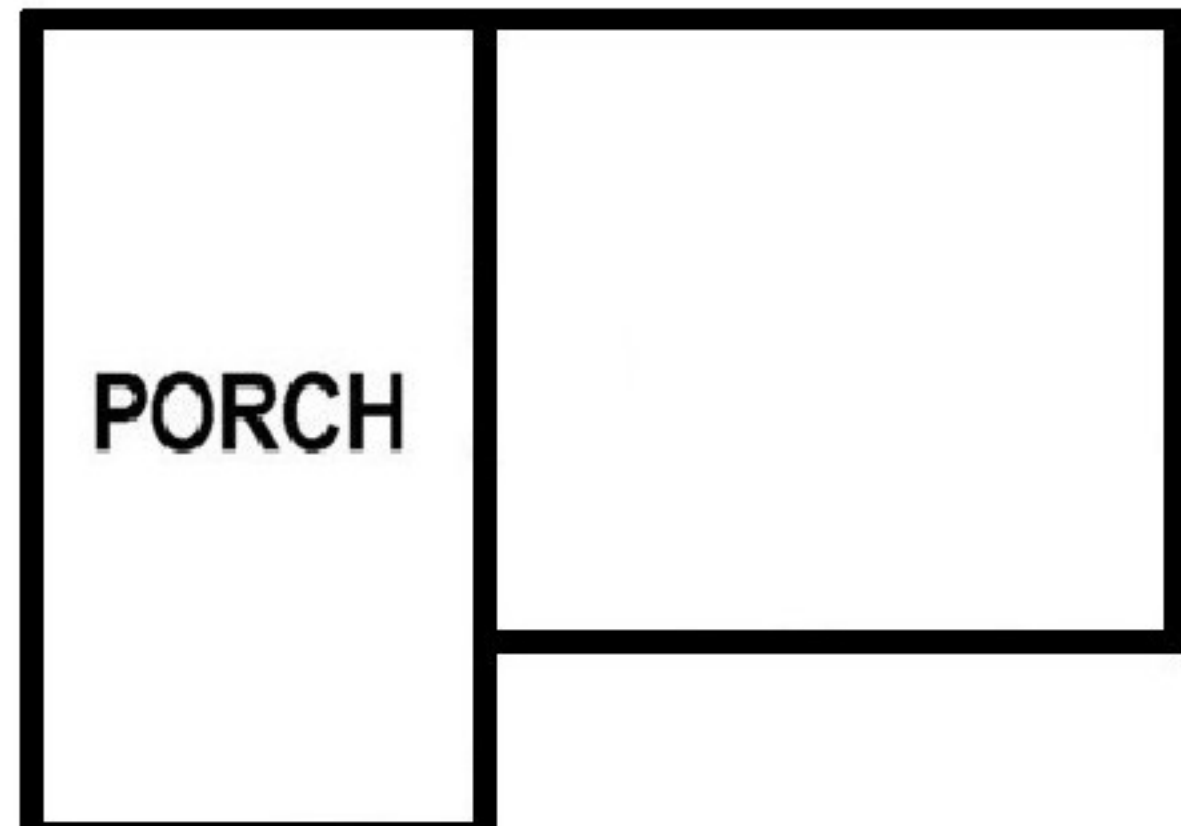
NORTH





PORCH

ZC01



PORCH

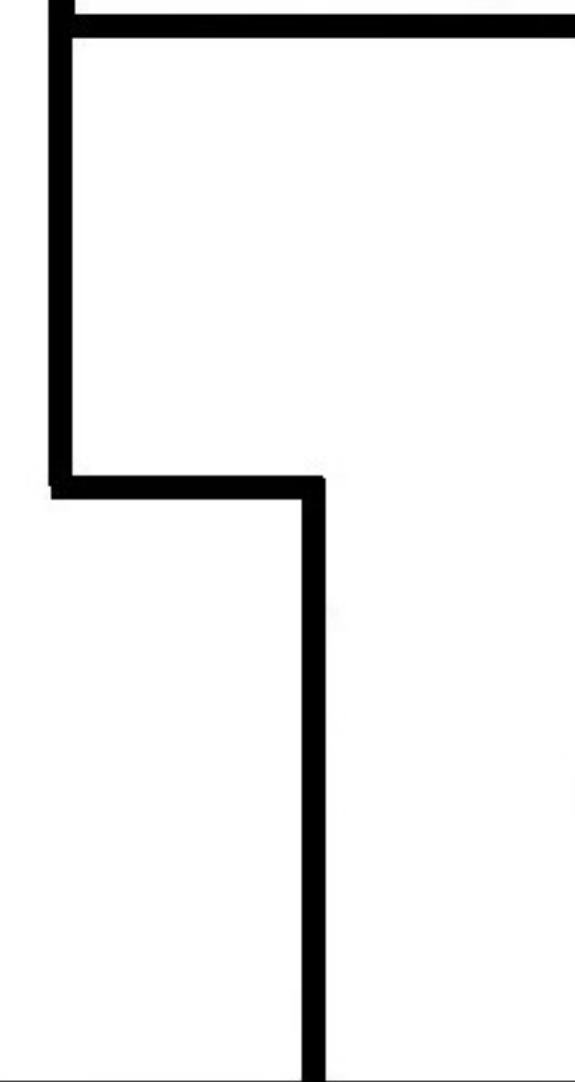
ZC01

**BLD 001**  
(GROUND FLOOR)

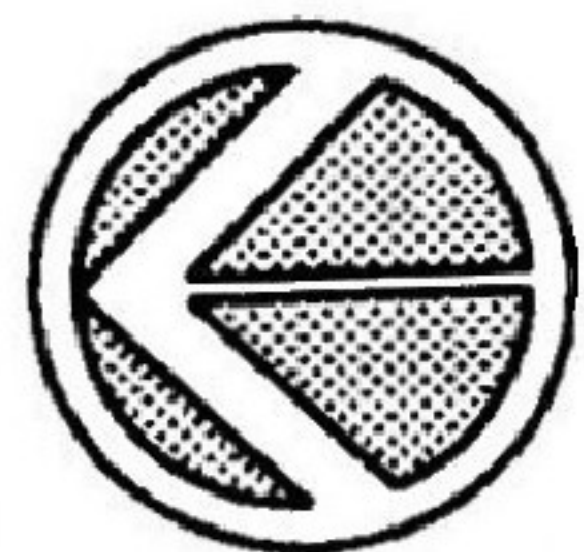


PORCH

ZC01



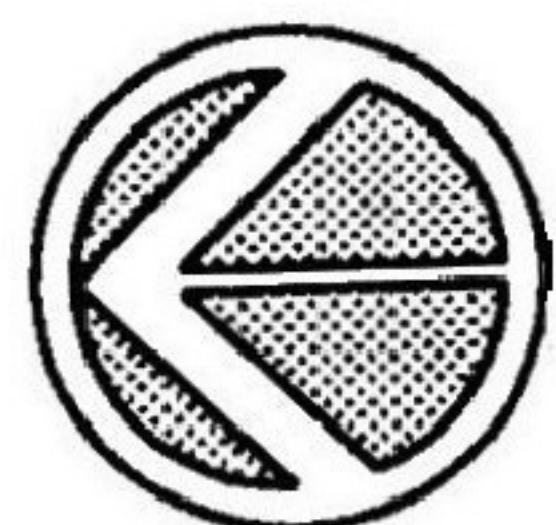
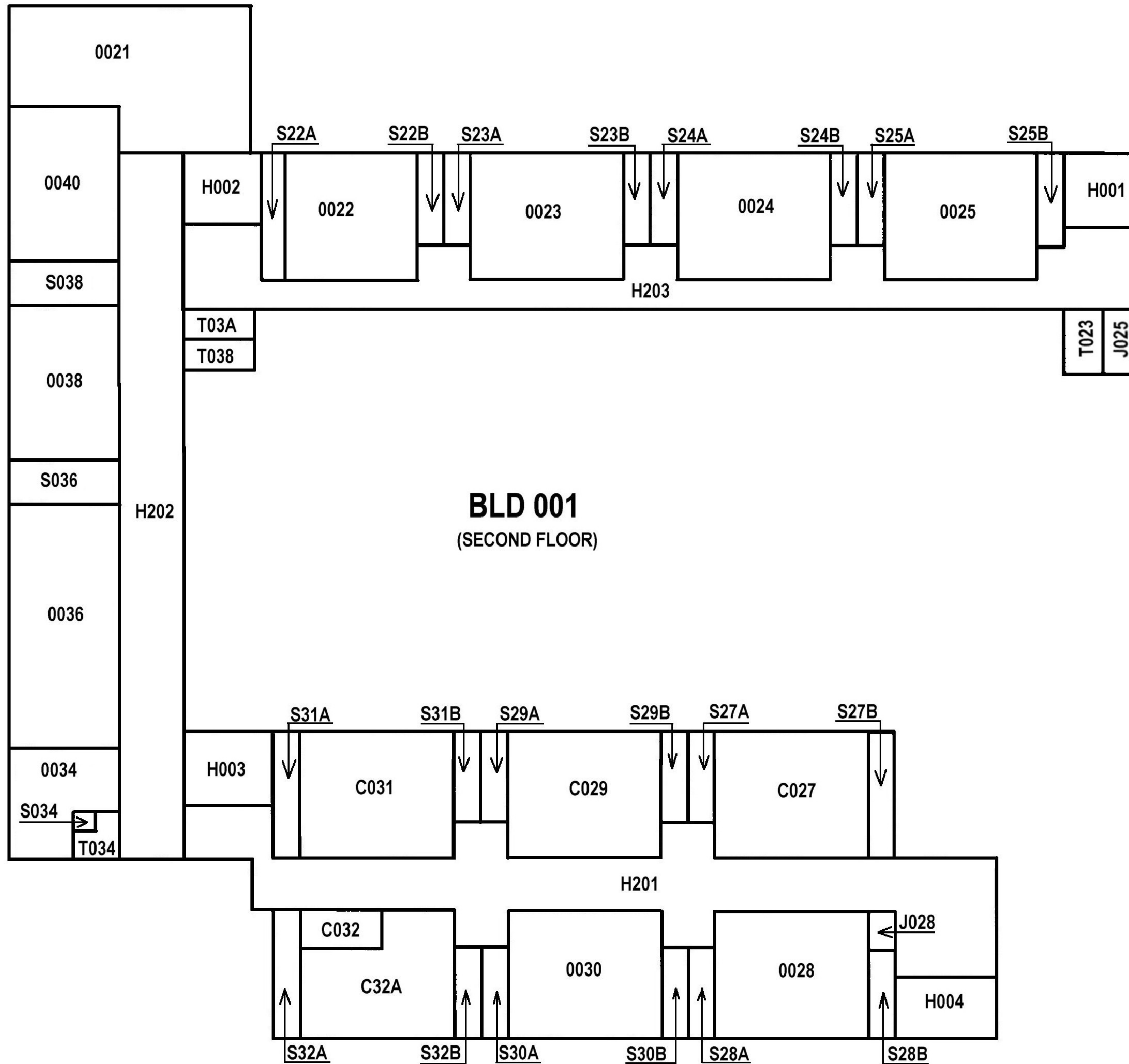
ZC02



NORTH

# FREMONT

DRAWING No.	1A
SPACE	CRAWL
FLOOR	1ST

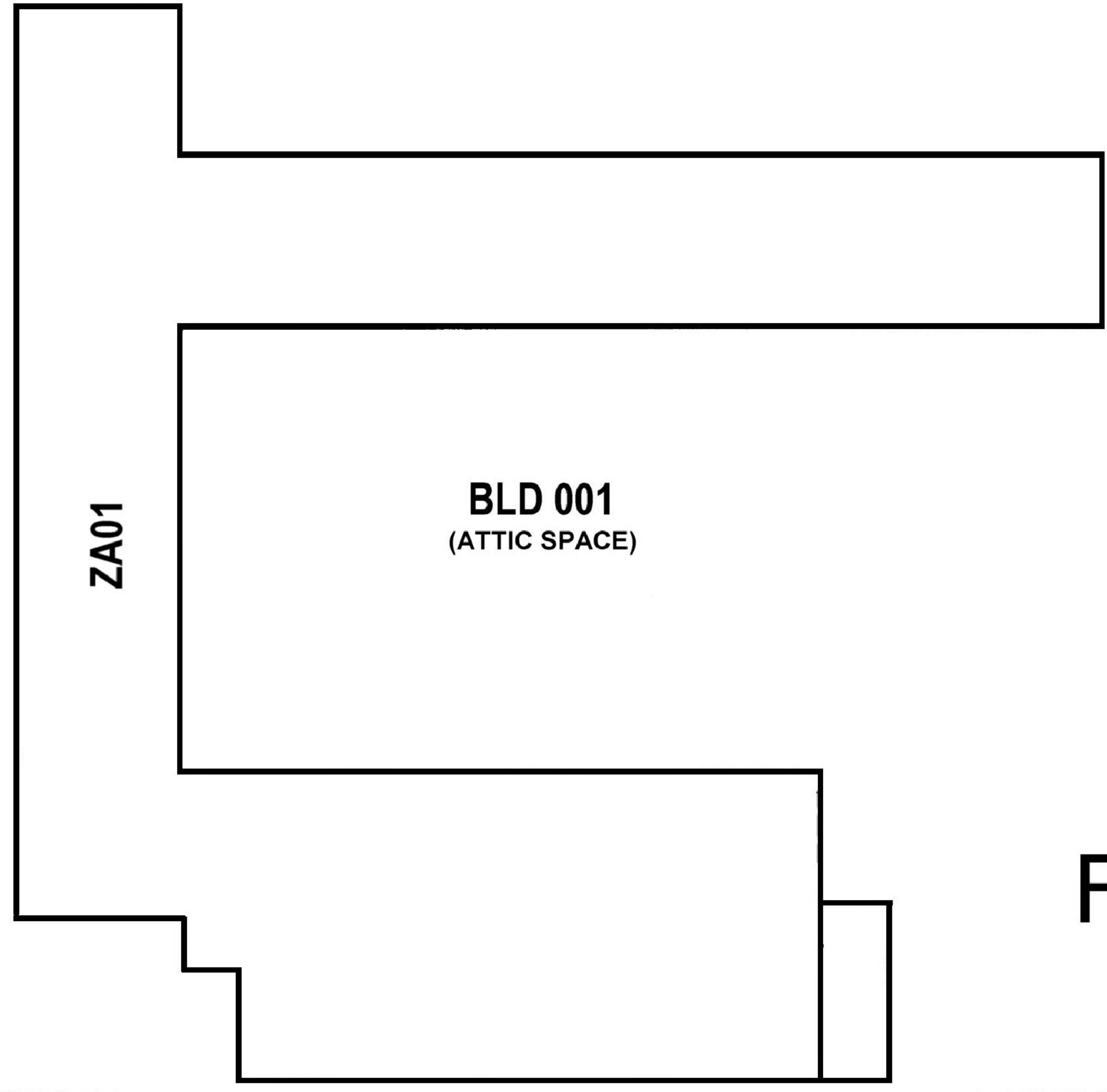
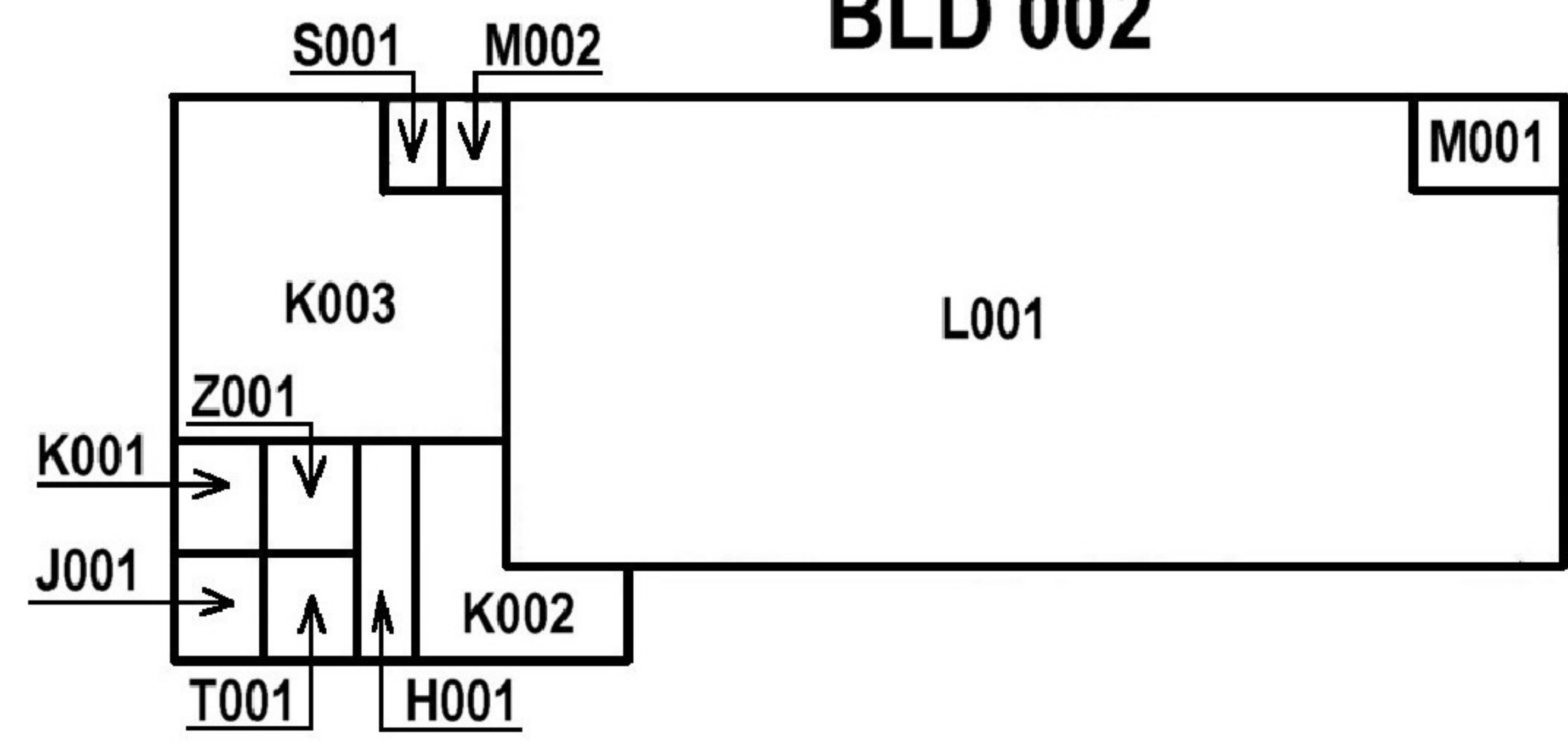


NORTH

# FREMONT

DRAWING No.	2
SPACE	
FLOOR	2nd

**BLD 002**



**BLD 001**  
(ATTIC SPACE)

**ZA01**

**FREMONT**



DRAWING No.	3
SPACE	
FLOOR	1ST

**SACRAMENTO CITY UNIFIED SCHOOL DISTRICT - AHRA 3 YEAR SUSPECT MATERIAL REPORT**

**DATE PRINTED: 6/29/2011**

**Page 1 of 23**

<b>SITE: 580</b>	<b>FREMONT</b>				<b>Address: 2420 N STREET, Sacramento 95816</b>			
<b>Building No:</b> 001	<b>Room</b> A001	<b>Description</b>	Auditorium		<b>Drawing No:</b> 1			
<b>Location</b>	<b>Homogeneous Material</b>	<b>Class</b>	<b>Friable</b>	<b>Material Size</b>	<b>Type of Asbestos</b>	<b>Sample Type</b>	<b>% Asbestos</b>	<b>Sample #</b>
Flooring	Tile 9 In. & Floor Mastic	M	N	1200 SF	Other	Assumed	N/A	

<b>Building No:</b> 001	<b>Room</b> B001	<b>Description</b>	Boiler Room		<b>Drawing No:</b> 1			
<b>Location</b>	<b>Homogeneous Material</b>	<b>Class</b>	<b>Friable</b>	<b>Material Size</b>	<b>Type of Asbestos</b>	<b>Sample Type</b>	<b>% Asbestos</b>	<b>Sample #</b>
Ceiling	Plaster	S	N	450 SF	Non ASB	Sampled	0	D6073
Mechanical	Boiler Brick - Interior	t	N	SF	Non ASB	Sampled	0	B3156
Mechanical	Boiler Insulation - Exterior	T	N	SF	Serp	Sampled	10	B3120 Boiler Exterior - 5-10% Chrysotile, 5-10% Amosite
Mechanical	Boiler Insulation - Interior	t	N	SF	Non ASB	Sampled	0	B3153
Piping	Heat Hot Water Insulation	T	N	50 LF	Serp	Sampled	10	B3146 2-7% Chrysotile, 5-10% Amosite

<b>Building No:</b> 001	<b>Room</b> C000	<b>Description</b>	Office		<b>Drawing No:</b> 1			
<b>Location</b>	<b>Homogeneous Material</b>	<b>Class</b>	<b>Friable</b>	<b>Material Size</b>	<b>Type of Asbestos</b>	<b>Sample Type</b>	<b>% Asbestos</b>	<b>Sample #</b>
Wall	Fiberboard	M	N	SF	Non ASB	Sampled	0	B3418
Wall	Sheet Rock	m	N	SF	Non ASB	Sampled	0	B3479 Behind fiberboard panels

<b>Building No:</b> 001	<b>Room</b> C001	<b>Description</b>	Office		<b>Drawing No:</b> 1			
<b>Location</b>	<b>Homogeneous Material</b>	<b>Class</b>	<b>Friable</b>	<b>Material Size</b>	<b>Type of Asbestos</b>	<b>Sample Type</b>	<b>% Asbestos</b>	<b>Sample #</b>
Ceiling	Acoustical Tile, Lay In	M	N	0 SF	Non ASB	Sampled	0	010B00
Ceiling	Plaster	S	N	240 SF	Non ASB	Sampled	0	D6073
Wall	Plaster	S	N	630 SF	Non ASB	Sampled	0	E6068

<b>Building No:</b> 001	<b>Room</b> C017	<b>Description</b>	Office		<b>Drawing No:</b> 1			
<b>Location</b>	<b>Homogeneous Material</b>	<b>Class</b>	<b>Friable</b>	<b>Material Size</b>	<b>Type of Asbestos</b>	<b>Sample Type</b>	<b>% Asbestos</b>	<b>Sample #</b>
Wall	Fiberboard	M	N	SF	Non ASB	Sampled	0	B3418
Wall	Sheet Rock	m	N	SF	Non ASB	Sampled	0	B3479 Behind fiberboard panels

<b>Building No:</b> 001	<b>Room</b> C018	<b>Description</b>	Office		<b>Drawing No:</b> 1			
<b>Location</b>	<b>Homogeneous Material</b>	<b>Class</b>	<b>Friable</b>	<b>Material Size</b>	<b>Type of Asbestos</b>	<b>Sample Type</b>	<b>% Asbestos</b>	<b>Sample #</b>
Wall	Fiberboard	M	N	SF	Non ASB	Sampled	0	B3418
Wall	Sheet Rock	m	N	SF	Non ASB	Sampled	0	B3479 Behind fiberboard panels

**SACRAMENTO CITY UNIFIED SCHOOL DISTRICT - AHERA 3 YEAR SUSPECT MATERIAL REPORT**

**DATE PRINTED: 6/29/2011**

**Page 2 of 23**

<b>SITE: 580</b>		<b>FREMONT</b>				<b>Address: 2420 N STREET, Sacramento 95816</b>				
<b>Building No:</b>	<b>001</b>	<b>Room</b>	<b>C027</b>	<b>Description</b>	<b>Office</b>		<b>Drawing No:</b>	<b>2</b>		
<b>Location</b>	<b>Homogeneous Material</b>	<b>Class</b>	<b>Friable</b>	<b>Material Size</b>	<b>Type of Asbestos</b>	<b>Sample Type</b>	<b>% Asbestos</b>	<b>Sample #</b>		
Ceiling	Acoustical Tile, Lay In	M	N	672 SF	Non ASB	Sampled	0	B1946		
Ceiling	Plaster	S	N	672 SF	Non ASB	Sampled	0	D6073		
Wall	Plaster	S	N	1040 SF	Non ASB	Sampled	0	E6068		

<b>Building No:</b>	<b>001</b>	<b>Room</b>	<b>C029</b>	<b>Description</b>	<b>Office</b>		<b>Drawing No:</b>	<b>2</b>		
<b>Location</b>	<b>Homogeneous Material</b>	<b>Class</b>	<b>Friable</b>	<b>Material Size</b>	<b>Type of Asbestos</b>	<b>Sample Type</b>	<b>% Asbestos</b>	<b>Sample #</b>		
Ceiling	Acoustical Tile, Lay In	M	N	0 SF	Non ASB	Sampled	0	010B00		
Ceiling	Plaster	S	N	672 SF	Non ASB	Sampled	0	D6073		
Wall	Plaster	S	N	1040 SF	Non ASB	Sampled	0	E6068		

<b>Building No:</b>	<b>001</b>	<b>Room</b>	<b>C031</b>	<b>Description</b>	<b>Office</b>		<b>Drawing No:</b>	<b>2</b>		
<b>Location</b>	<b>Homogeneous Material</b>	<b>Class</b>	<b>Friable</b>	<b>Material Size</b>	<b>Type of Asbestos</b>	<b>Sample Type</b>	<b>% Asbestos</b>	<b>Sample #</b>		
Ceiling	Plaster	S	N	660 SF	Non ASB	Sampled	0	D6073		
Wall	Plaster	S	N	1040 SF	Non ASB	Sampled	0	E6068		
Wall	Transite Chalk Board	M	N	32 SF	Other	Assumed	N/A			
Wall	Vinyl Sheet	M	N	660 SF	Non ASB	Sampled	0	B3410		

<b>Building No:</b>	<b>001</b>	<b>Room</b>	<b>C032</b>	<b>Description</b>	<b>Office</b>		<b>Drawing No:</b>	<b>2</b>		
<b>Location</b>	<b>Homogeneous Material</b>	<b>Class</b>	<b>Friable</b>	<b>Material Size</b>	<b>Type of Asbestos</b>	<b>Sample Type</b>	<b>% Asbestos</b>	<b>Sample #</b>		
Ceiling	Plaster	S	N	140 SF	Non ASB	Sampled	0	D6073		
Wall	Plaster	S	N	480 SF	Non ASB	Sampled	0	E6068		

<b>Building No:</b>	<b>001</b>	<b>Room</b>	<b>C32A</b>	<b>Description</b>	<b>Office</b>		<b>Drawing No:</b>	<b>2</b>		
<b>Location</b>	<b>Homogeneous Material</b>	<b>Class</b>	<b>Friable</b>	<b>Material Size</b>	<b>Type of Asbestos</b>	<b>Sample Type</b>	<b>% Asbestos</b>	<b>Sample #</b>		
Ceiling	Plaster	S	N	364 SF	Non ASB	Sampled	0	D6073		
Wall	Plaster	S	N	820 SF	Non ASB	Sampled	0	E6068		

<b>Building No:</b>	<b>001</b>	<b>Room</b>	<b>C32B</b>	<b>Description</b>	<b>Office</b>		<b>Drawing No:</b>	<b>2</b>		
<b>Location</b>	<b>Homogeneous Material</b>	<b>Class</b>	<b>Friable</b>	<b>Material Size</b>	<b>Type of Asbestos</b>	<b>Sample Type</b>	<b>% Asbestos</b>	<b>Sample #</b>		
Ceiling	Plaster	S	N	130 SF	Non ASB	Sampled	0	D6073		

**SACRAMENTO CITY UNIFIED SCHOOL DISTRICT - AHRA 3 YEAR SUSPECT MATERIAL REPORT**

**DATE PRINTED: 6/29/2011**

**Page 3 of 23**

**SITE: 580**      **FREMONT**      **Address: 2420 N STREET, Sacramento 95816**

**Building No: 001**    **Room H001**    **Description**    **Hallway/Stairs**    **Drawing No: 2**

Location	Homogeneous Material	Class	Friable	Material Size	Type of Asbestos	Sample Type	% Asbestos	Sample #
Ceiling	Plaster	S	N	330 SF	Non ASB	Sampled	0	D6073
Wall	Plaster	S	N	1400 SF	Non ASB	Sampled	0	E6068

**Building No: 001**    **Room H002**    **Description**    **Hallway/Stairs**    **Drawing No: 1**

Location	Homogeneous Material	Class	Friable	Material Size	Type of Asbestos	Sample Type	% Asbestos	Sample #
Ceiling	Plaster	S	N	330 SF	Non ASB	Sampled	0	D6073
Wall	Plaster	S	N	1400 SF	Non ASB	Sampled	0	E6068

**Building No: 001**    **Room H003**    **Description**    **Hallway/Stairs**    **Drawing No: 1**

Location	Homogeneous Material	Class	Friable	Material Size	Type of Asbestos	Sample Type	% Asbestos	Sample #
Ceiling	Plaster	S	N	540 SF	Non ASB	Sampled	0	D6073
Wall	Plaster	S	N	1775 SF	Non ASB	Sampled	0	E6068

**Building No: 001**    **Room H004**    **Description**    **Hallway/Stairs**    **Drawing No: 1**

Location	Homogeneous Material	Class	Friable	Material Size	Type of Asbestos	Sample Type	% Asbestos	Sample #
Ceiling	Plaster	S	N	540 SF	Non ASB	Sampled	0	D6073
Wall	Plaster	S	N	1775 SF	Non ASB	Sampled	0	E6068

**Building No: 001**    **Room H101**    **Description**    **Hallway/Stairs**    **Drawing No: 1**

Location	Homogeneous Material	Class	Friable	Material Size	Type of Asbestos	Sample Type	% Asbestos	Sample #
Ceiling	Acoustical Tile, Lay In	M	N	SF	Non ASB	Sampled	0	B1946

**Building No: 001**    **Room H102**    **Description**    **Hallway/Stairs**    **Drawing No: 1**

Location	Homogeneous Material	Class	Friable	Material Size	Type of Asbestos	Sample Type	% Asbestos	Sample #
Ceiling	Acoustical Tile, Lay In	M	N	SF	Non ASB	Sampled	0	B1946

**Building No: 001**    **Room H103**    **Description**    **Hallway/Stairs**    **Drawing No: 1**

Location	Homogeneous Material	Class	Friable	Material Size	Type of Asbestos	Sample Type	% Asbestos	Sample #
Ceiling	Plaster	S	N	200 SF	Non ASB	Sampled	0	D6073
Wall	Plaster	S	N	180 SF	Non ASB	Sampled	0	E6068



**SACRAMENTO CITY UNIFIED SCHOOL DISTRICT - AHERA 3 YEAR SUSPECT MATERIAL REPORT**

**DATE PRINTED: 6/29/2011**

<b>SITE: 580</b>		<b>FREMONT</b>				<b>Address: 2420 N STREET, Sacramento 95816</b>				
<b>Building No:</b>	<b>001</b>	<b>Room</b>	<b>H104</b>	<b>Description</b>	<b>Hallway/Stairs</b>		<b>Drawing No:</b>	<b>1</b>		
<b>Location</b>	<b>Homogeneous Material</b>	<b>Class</b>	<b>Friable</b>	<b>Material Size</b>		<b>Type of Asbestos</b>	<b>Sample Type</b>	<b>% Asbestos</b>	<b>Sample #</b>	
Ceiling	Acoustical Tile, Lay In	M	N	2900	SF	Non ASB	Sampled	0	B1946	
Ceiling	Plaster	S	N	2930	SF	Non ASB	Sampled	0	D6073	
Wall	Plaster	S	N	1020	SF	Non ASB	Sampled	0	E6068	

<b>Building No:</b>	<b>001</b>	<b>Room</b>	<b>H201</b>	<b>Description</b>	<b>Hallway/Stairs</b>		<b>Drawing No:</b>	<b>2</b>		
<b>Location</b>	<b>Homogeneous Material</b>	<b>Class</b>	<b>Friable</b>	<b>Material Size</b>		<b>Type of Asbestos</b>	<b>Sample Type</b>	<b>% Asbestos</b>	<b>Sample #</b>	
Ceiling	Acoustical Tile, Lay In	M	N	1550	SF	Non ASB	Assumed	N/A	B1946	
Ceiling	Plaster	S	N	1550	SF	Non ASB	Sampled	0	D6073	
Wall	Plaster	S	N	960	SF	Non ASB	Sampled	0	E6068	

<b>Building No:</b>	<b>001</b>	<b>Room</b>	<b>H202</b>	<b>Description</b>	<b>Hallway/Stairs</b>		<b>Drawing No:</b>	<b>2</b>		
<b>Location</b>	<b>Homogeneous Material</b>	<b>Class</b>	<b>Friable</b>	<b>Material Size</b>		<b>Type of Asbestos</b>	<b>Sample Type</b>	<b>% Asbestos</b>	<b>Sample #</b>	
Ceiling	Acoustical Tile, Lay In	M	N	1460	SF	Non ASB	Sampled	0	B1946	
Ceiling	Plaster	S	N	1460	SF	Non ASB	Sampled	0	D6073	

<b>Building No:</b>	<b>001</b>	<b>Room</b>	<b>H203</b>	<b>Description</b>	<b>Hallway/Stairs</b>		<b>Drawing No:</b>	<b>2</b>		
<b>Location</b>	<b>Homogeneous Material</b>	<b>Class</b>	<b>Friable</b>	<b>Material Size</b>		<b>Type of Asbestos</b>	<b>Sample Type</b>	<b>% Asbestos</b>	<b>Sample #</b>	
Ceiling	Acoustical Tile, Lay In	M	N	1700	SF	Non ASB	Sampled	0	B1946	
Ceiling	Plaster	S	Y	1730	SF	Non ASB	Sampled	0	D6073	

<b>Building No:</b>	<b>001</b>	<b>Room</b>	<b>I017</b>	<b>Description</b>	<b>Lounge</b>		<b>Drawing No:</b>	<b>1</b>		
<b>Location</b>	<b>Homogeneous Material</b>	<b>Class</b>	<b>Friable</b>	<b>Material Size</b>		<b>Type of Asbestos</b>	<b>Sample Type</b>	<b>% Asbestos</b>	<b>Sample #</b>	
Ceiling	Plaster	S	N	660	SF	Non ASB	Sampled	0	D6073	
Flooring	Tile 9 In. & Floor Mastic	M	N	660	SF	Other	Assumed	N/A		
Wall	Plaster	S	N	960	SF	Non ASB	Sampled	0	E6068	

<b>Building No:</b>	<b>001</b>	<b>Room</b>	<b>J002</b>	<b>Description</b>	<b>Custodial Closet</b>		<b>Drawing No:</b>	<b>1</b>		
<b>Location</b>	<b>Homogeneous Material</b>	<b>Class</b>	<b>Friable</b>	<b>Material Size</b>		<b>Type of Asbestos</b>	<b>Sample Type</b>	<b>% Asbestos</b>	<b>Sample #</b>	
Ceiling	Plaster	S	N	44	SF	Non ASB	Sampled	0	D6073	
Wall	Plaster	S	N	200	SF	Non ASB	Sampled	0	E6068	

**SACRAMENTO CITY UNIFIED SCHOOL DISTRICT - AHRA 3 YEAR SUSPECT MATERIAL REPORT**

**DATE PRINTED: 6/29/2011**

**Page 5 of 23**

<b>SITE: 580</b>		<b>FREMONT</b>				<b>Address: 2420 N STREET, Sacramento 95816</b>				
<b>Building No:</b>	<b>001</b>	<b>Room</b>	<b>J005</b>	<b>Description</b>	<b>Custodial Closet</b>		<b>Drawing No:</b>	<b>1</b>		
<b>Location</b>	<b>Homogeneous Material</b>	<b>Class</b>	<b>Friable</b>	<b>Material Size</b>	<b>Type of Asbestos</b>	<b>Sample Type</b>	<b>% Asbestos</b>	<b>Sample #</b>		
Ceiling	Plaster	S	N	44 SF	Non ASB	Sampled	0	D6073		
Wall	Plaster	S	N	200 SF	Non ASB	Sampled	0	E6068		

<b>Building No:</b>	<b>001</b>	<b>Room</b>	<b>J006</b>	<b>Description</b>	<b>Custodial Closet</b>		<b>Drawing No:</b>	<b>1</b>		
<b>Location</b>	<b>Homogeneous Material</b>	<b>Class</b>	<b>Friable</b>	<b>Material Size</b>	<b>Type of Asbestos</b>	<b>Sample Type</b>	<b>% Asbestos</b>	<b>Sample #</b>		
Ceiling	Plaster	S	N	44 SF	Non ASB	Sampled	0	D6073		
Wall	Plaster	S	N	200 SF	Non ASB	Sampled	0	E6068		

<b>Building No:</b>	<b>001</b>	<b>Room</b>	<b>J011</b>	<b>Description</b>	<b>Custodial Closet</b>		<b>Drawing No:</b>	<b>1</b>		
<b>Location</b>	<b>Homogeneous Material</b>	<b>Class</b>	<b>Friable</b>	<b>Material Size</b>	<b>Type of Asbestos</b>	<b>Sample Type</b>	<b>% Asbestos</b>	<b>Sample #</b>		
Ceiling	Plaster	S	N	44 SF	Non ASB	Sampled	0	D6073		
Wall	Plaster	S	N	200 SF	Non ASB	Sampled	0	E6068		

<b>Building No:</b>	<b>001</b>	<b>Room</b>	<b>J025</b>	<b>Description</b>	<b>Custodial Closet</b>		<b>Drawing No:</b>	<b>2</b>		
<b>Location</b>	<b>Homogeneous Material</b>	<b>Class</b>	<b>Friable</b>	<b>Material Size</b>	<b>Type of Asbestos</b>	<b>Sample Type</b>	<b>% Asbestos</b>	<b>Sample #</b>		
Ceiling	Plaster	S	N	12 SF	Non ASB	Sampled	0	D6073		
Wall	Plaster	S	N	91 SF	Non ASB	Sampled	0	E6068		

<b>Building No:</b>	<b>001</b>	<b>Room</b>	<b>J028</b>	<b>Description</b>	<b>Custodial Closet</b>		<b>Drawing No:</b>	<b>2</b>		
<b>Location</b>	<b>Homogeneous Material</b>	<b>Class</b>	<b>Friable</b>	<b>Material Size</b>	<b>Type of Asbestos</b>	<b>Sample Type</b>	<b>% Asbestos</b>	<b>Sample #</b>		
Ceiling	Plaster	S	N	20 SF	Non ASB	Sampled	0	D6073		
Wall	Plaster	S	N	200 SF	Non ASB	Sampled	0	E6068		

<b>Building No:</b>	<b>001</b>	<b>Room</b>	<b>J038</b>	<b>Description</b>	<b>Custodial Closet</b>		<b>Drawing No:</b>	<b>2</b>		
<b>Location</b>	<b>Homogeneous Material</b>	<b>Class</b>	<b>Friable</b>	<b>Material Size</b>	<b>Type of Asbestos</b>	<b>Sample Type</b>	<b>% Asbestos</b>	<b>Sample #</b>		
Wall	Plaster	S	Y	280 SF	Non ASB	Sampled	0	E6068		

<b>Building No:</b>	<b>001</b>	<b>Room</b>	<b>K000</b>	<b>Description</b>	<b>Kitchen</b>		<b>Drawing No:</b>	<b>1</b>		
<b>Location</b>	<b>Homogeneous Material</b>	<b>Class</b>	<b>Friable</b>	<b>Material Size</b>	<b>Type of Asbestos</b>	<b>Sample Type</b>	<b>% Asbestos</b>	<b>Sample #</b>		
Wall	Sheet Rock	M	N	SF	Non ASB	Sampled	0	B3413		

**SACRAMENTO CITY UNIFIED SCHOOL DISTRICT - AHERA 3 YEAR SUSPECT MATERIAL REPORT**

**DATE PRINTED: 6/29/2011**

<b>SITE: 580</b>		<b>FREMONT</b>			<b>Address: 2420 N STREET, Sacramento 95816</b>					
<b>Building No:</b>	<b>001</b>	<b>Room</b>	<b>K017</b>	<b>Description</b>	<b>Kitchen</b>		<b>Drawing No:</b>	<b>1</b>		
<b>Location</b>	<b>Homogeneous Material</b>	<b>Class</b>	<b>Friable</b>	<b>Material Size</b>		<b>Type of Asbestos</b>	<b>Sample Type</b>	<b>% Asbestos</b>	<b>Sample #</b>	
Ceiling	Plaster	S	N	154	SF	Non ASB	Sampled	0	D6073	
Wall	Plaster	S	N	540	SF	Non ASB	Sampled	0	E6068	
Wall	Vinyl Sheet	M	N	154	SF	Non ASB	Sampled	0	B3410	

<b>Building No:</b>	<b>001</b>	<b>Room</b>	<b>O001</b>	<b>Description</b>	<b>Classroom</b>		<b>Drawing No:</b>	<b>1</b>		
<b>Location</b>	<b>Homogeneous Material</b>	<b>Class</b>	<b>Friable</b>	<b>Material Size</b>		<b>Type of Asbestos</b>	<b>Sample Type</b>	<b>% Asbestos</b>	<b>Sample #</b>	
Ceiling	Acoustical Tile, Lay In	M	N	0	SF	Non ASB	Sampled	0	010B00	
Ceiling	Plaster	S	N		SF	Non ASB	Sampled	0	D6073	
Wall	Fiberboard	M	N		SF	Non ASB	Sampled	0	B3418	
Wall	Plaster	S	N	1200	SF	Non ASB	Sampled	0	E6068	
Wall	Sheet Rock	m	N		SF	Non ASB	Sampled	0	B3479 Behind fiberboard panels	

<b>Building No:</b>	<b>001</b>	<b>Room</b>	<b>O002</b>	<b>Description</b>	<b>Classroom</b>		<b>Drawing No:</b>	<b>1</b>		
<b>Location</b>	<b>Homogeneous Material</b>	<b>Class</b>	<b>Friable</b>	<b>Material Size</b>		<b>Type of Asbestos</b>	<b>Sample Type</b>	<b>% Asbestos</b>	<b>Sample #</b>	
Ceiling	Plaster	S	N	690	SF	Non ASB	Sampled	0	D6073	
Flooring	Tile 12 In.	M	N	690	SF	Non ASB	Sampled	0	E6067	
Wall	Plaster	S	N	900	SF	Non ASB	Sampled	0	E6068	
Wall	Transite Chalk Board	M	N	200	SF	Other	Assumed	N/A		

<b>Building No:</b>	<b>001</b>	<b>Room</b>	<b>O003</b>	<b>Description</b>	<b>Classroom</b>		<b>Drawing No:</b>	<b>1</b>		
<b>Location</b>	<b>Homogeneous Material</b>	<b>Class</b>	<b>Friable</b>	<b>Material Size</b>		<b>Type of Asbestos</b>	<b>Sample Type</b>	<b>% Asbestos</b>	<b>Sample #</b>	
Ceiling	Acoustical Tile, Lay In	M	N	0	SF	Non ASB	Sampled	0	010B00	
Wall	Plaster	S	N	900	SF	Non ASB	Sampled	0	E6068	
Wall	Vinyl Sheet	M	N	660	SF	Non ASB	Sampled	0	B3410	

<b>Building No:</b>	<b>001</b>	<b>Room</b>	<b>O004</b>	<b>Description</b>	<b>Classroom</b>		<b>Drawing No:</b>	<b>1</b>		
<b>Location</b>	<b>Homogeneous Material</b>	<b>Class</b>	<b>Friable</b>	<b>Material Size</b>		<b>Type of Asbestos</b>	<b>Sample Type</b>	<b>% Asbestos</b>	<b>Sample #</b>	
Ceiling	Acoustical Tile, Lay In	M	N	0	SF	Non ASB	Sampled	0	010H00	
Wall	Plaster	S	N	900	SF	Non ASB	Sampled	0	E6068	
Wall	Vinyl Sheet	M	N	660	SF	Non ASB	Sampled	0	B3410	

**SACRAMENTO CITY UNIFIED SCHOOL DISTRICT - AHERA 3 YEAR SUSPECT MATERIAL REPORT**

**DATE PRINTED: 6/29/2011**

<b>SITE: 580</b>		<b>FREMONT</b>				<b>Address: 2420 N STREET, Sacramento 95816</b>				
<b>Building No:</b>	<b>001</b>	<b>Room</b>	<b>O005</b>	<b>Description</b>	<b>Classroom</b>		<b>Drawing No:</b>	<b>1</b>		
<b>Location</b>	<b>Homogeneous Material</b>	<b>Class</b>	<b>Friable</b>	<b>Material Size</b>		<b>Type of Asbestos</b>	<b>Sample Type</b>	<b>% Asbestos</b>	<b>Sample #</b>	
Ceiling	Acoustical Tile, Lay In	M	N	0	SF	Non ASB	Sampled	0	010H00	
Wall	Plaster	S	N	900	SF	Non ASB	Sampled	0	E6068	
Wall	Transite Chalk Board	M	N	64	SF	Other	Assumed	N/A		
Wall	Vinyl Sheet	M	N	660	SF	Non ASB	Sampled	0	B3410	

<b>Building No:</b>	<b>001</b>	<b>Room</b>	<b>O006</b>	<b>Description</b>	<b>Classroom</b>		<b>Drawing No:</b>	<b>1</b>		
<b>Location</b>	<b>Homogeneous Material</b>	<b>Class</b>	<b>Friable</b>	<b>Material Size</b>		<b>Type of Asbestos</b>	<b>Sample Type</b>	<b>% Asbestos</b>	<b>Sample #</b>	
Ceiling	Plaster	S	N	660	SF	Non ASB	Sampled	0	D6073	
Wall	Plaster	S	N	920	SF	Non ASB	Sampled	0	E6068	
Wall	Vinyl Sheet	M	N	660	SF	Non ASB	Sampled	0	B3410	

<b>Building No:</b>	<b>001</b>	<b>Room</b>	<b>O008</b>	<b>Description</b>	<b>Classroom</b>		<b>Drawing No:</b>	<b>1</b>		
<b>Location</b>	<b>Homogeneous Material</b>	<b>Class</b>	<b>Friable</b>	<b>Material Size</b>		<b>Type of Asbestos</b>	<b>Sample Type</b>	<b>% Asbestos</b>	<b>Sample #</b>	
Ceiling	Plaster	S	N	610	SF	Non ASB	Sampled	0	D6073	
Wall	Plaster	S	N	902	SF	Non ASB	Sampled	0	E6068	

<b>Building No:</b>	<b>001</b>	<b>Room</b>	<b>O009</b>	<b>Description</b>	<b>Classroom</b>		<b>Drawing No:</b>	<b>1</b>		
<b>Location</b>	<b>Homogeneous Material</b>	<b>Class</b>	<b>Friable</b>	<b>Material Size</b>		<b>Type of Asbestos</b>	<b>Sample Type</b>	<b>% Asbestos</b>	<b>Sample #</b>	
Ceiling	Acoustical Tile, Lay In	M	N	0	SF	Non ASB	Sampled	0	010H01	
Ceiling	Plaster	S	N	664	SF	Non ASB	Sampled	0	D6073	
Wall	Plaster	S	N	660	SF	Non ASB	Sampled	0	E6068	
Wall	Vinyl Sheet	M	N	644	SF	Non ASB	Sampled	0	B3410	

<b>Building No:</b>	<b>001</b>	<b>Room</b>	<b>O010</b>	<b>Description</b>	<b>Classroom</b>		<b>Drawing No:</b>	<b>1</b>		
<b>Location</b>	<b>Homogeneous Material</b>	<b>Class</b>	<b>Friable</b>	<b>Material Size</b>		<b>Type of Asbestos</b>	<b>Sample Type</b>	<b>% Asbestos</b>	<b>Sample #</b>	
Ceiling	Acoustical Tile, Lay In	M	N	0	SF	Non ASB	Sampled	0	010H00	
Ceiling	Plaster	S	N	610	SF	Non ASB	Sampled	0	D6073	
Flooring	Tile 9 In. & Floor Mastic	M	N	610	SF	Other	Assumed	N/A		
Wall	Plaster	S	N	902	SF	Non ASB	Sampled	0	E6068	

**SACRAMENTO CITY UNIFIED SCHOOL DISTRICT - AHERA 3 YEAR SUSPECT MATERIAL REPORT**

DATE PRINTED: 6/29/2011

Page 8 of 23

SITE: 580		FREMONT				Address: 2420 N STREET, Sacramento 95816				
Building No:	001	Room	O011	Description	Classroom		Drawing No:	1		
Location	Homogeneous Material	Class	Friable	Material Size		Type of Asbestos	Sample Type	% Asbestos	Sample #	
Ceiling	Acoustical Tile, Lay In	M	N	0	SF	Non ASB	Sampled	0	010H00	
Ceiling	Plaster	S	N	644	SF	Non ASB	Sampled	0	D6073	
Wall	Plaster	S	N	920	SF	Non ASB	Sampled	0	E6068	
Wall	Transite Chalk Board	M	N	64	SF	Other	Assumed	N/A		
Wall	Vinyl Sheet	M	N	644	SF	Non ASB	Sampled	0	B3410	

Building No:	001	Room	O012	Description	Classroom		Drawing No:	1		
Location	Homogeneous Material	Class	Friable	Material Size		Type of Asbestos	Sample Type	% Asbestos	Sample #	
Ceiling	Acoustical Tile, Lay In	M	N	0	SF	Non ASB	Sampled	0	010H00	
Ceiling	Plaster	S	N	610	SF	Non ASB	Sampled	0	D6073	
Wall	Plaster	S	N	630	SF	Non ASB	Sampled	0	T1934	
Wall	Transite Chalk Board	M	N	64	SF	Other	Assumed	N/A		
Wall	Vinyl Sheet	M	N	610	SF	Non ASB	Sampled	0	B3410	

Building No:	001	Room	O021	Description	Classroom		Drawing No:	2		
Location	Homogeneous Material	Class	Friable	Material Size		Type of Asbestos	Sample Type	% Asbestos	Sample #	
Ceiling	Plaster	S	Y	840	SF	Non ASB	Sampled	0	D6073	
Flooring	Tile 12 In.	M	N		SF	Non ASB	Sampled	0	B3395	
Wall	Plaster	S	N	920	SF	Non ASB	Sampled	0	E6068	
Wall	Transite Chalk Board	M	N	64	SF	Other	Assumed	N/A		
Wall	Vinyl Sheet	M	N	840	SF	Non ASB	Sampled	0	B3410	Under newer flooring

Building No:	001	Room	O022	Description	Classroom		Drawing No:	2		
Location	Homogeneous Material	Class	Friable	Material Size		Type of Asbestos	Sample Type	% Asbestos	Sample #	
Ceiling	Plaster	S	N	660	SF	Non ASB	Sampled	0	D6073	
Wall	Plaster	S	N	840	SF	Non ASB	Sampled	0	E6068	
Wall	Vinyl Sheet	M	N	660	SF	Non ASB	Sampled	0	B3410	

**SACRAMENTO CITY UNIFIED SCHOOL DISTRICT - AHERA 3 YEAR SUSPECT MATERIAL REPORT**

**DATE PRINTED: 6/29/2011**

**Page 9 of 23**

<b>SITE: 580</b>		<b>FREMONT</b>				<b>Address: 2420 N STREET, Sacramento 95816</b>				
<b>Building No:</b>	<b>001</b>	<b>Room</b>	<b>O023</b>	<b>Description</b>	<b>Classroom</b>		<b>Drawing No:</b>	<b>2</b>		
<b>Location</b>	<b>Homogeneous Material</b>	<b>Class</b>	<b>Friable</b>	<b>Material Size</b>		<b>Type of Asbestos</b>	<b>Sample Type</b>	<b>% Asbestos</b>	<b>Sample #</b>	
Ceiling	Plaster	S	Y	660	SF	Non ASB	Sampled	0	D6073	
Wall	Plaster	S	N	840	SF	Non ASB	Sampled	0	E6068	
Wall	Transite Chalk Board	M	N	64	SF	Other	Assumed	N/A		
Wall	Vinyl Sheet	M	N	660	SF	Non ASB	Sampled	0	B3410	

<b>Building No:</b>	<b>001</b>	<b>Room</b>	<b>O024</b>	<b>Description</b>	<b>Classroom</b>		<b>Drawing No:</b>	<b>1</b>		
<b>Location</b>	<b>Homogeneous Material</b>	<b>Class</b>	<b>Friable</b>	<b>Material Size</b>		<b>Type of Asbestos</b>	<b>Sample Type</b>	<b>% Asbestos</b>	<b>Sample #</b>	
Ceiling	Acoustical Tile	M	N	660	SF	Non ASB	Sampled	0	T1943	
Ceiling	Plaster	S	N	660	SF	Non ASB	Sampled	0	D6073	
Wall	Acoustical Tile	M	N	109	SF	Non ASB	Sampled	0	T1566	
Wall	Plaster	S	N	840	SF	Non ASB	Sampled	0	E6068	
Wall	Vinyl Sheet	M	N	660	SF	Non ASB	Sampled	0	B3410	

<b>Building No:</b>	<b>001</b>	<b>Room</b>	<b>O025</b>	<b>Description</b>	<b>Classroom</b>		<b>Drawing No:</b>	<b>2</b>		
<b>Location</b>	<b>Homogeneous Material</b>	<b>Class</b>	<b>Friable</b>	<b>Material Size</b>		<b>Type of Asbestos</b>	<b>Sample Type</b>	<b>% Asbestos</b>	<b>Sample #</b>	
Ceiling	Plaster	S	Y	660	SF	Non ASB	Sampled	0	D6073	
Wall	Plaster	S	N	840	SF	Non ASB	Sampled	0	E6068	
Wall	Vinyl Sheet	M	N	660	SF	Non ASB	Sampled	0	B3410	

<b>Building No:</b>	<b>001</b>	<b>Room</b>	<b>O028</b>	<b>Description</b>	<b>Classroom</b>		<b>Drawing No:</b>	<b>2</b>		
<b>Location</b>	<b>Homogeneous Material</b>	<b>Class</b>	<b>Friable</b>	<b>Material Size</b>		<b>Type of Asbestos</b>	<b>Sample Type</b>	<b>% Asbestos</b>	<b>Sample #</b>	
Ceiling	Plaster	S	N	672	SF	Non ASB	Sampled	0	D6073	
Wall	Plaster	S	N	1040	SF	Non ASB	Sampled	0	E6068	
Wall	Vinyl Sheet	M	N	672	SF	Non ASB	Sampled	0	B3410	

<b>Building No:</b>	<b>001</b>	<b>Room</b>	<b>O030</b>	<b>Description</b>	<b>Classroom</b>		<b>Drawing No:</b>	<b>2</b>		
<b>Location</b>	<b>Homogeneous Material</b>	<b>Class</b>	<b>Friable</b>	<b>Material Size</b>		<b>Type of Asbestos</b>	<b>Sample Type</b>	<b>% Asbestos</b>	<b>Sample #</b>	
Ceiling	Plaster	S	N	672	SF	Non ASB	Sampled	0	D6073	
Wall	Plaster	S	N	1040	SF	Non ASB	Sampled	0	E6068	
Wall	Transite Chalk Board	M	N	64	SF	Other	Assumed	N/A		
Wall	Vinyl Sheet	M	N	672	SF	Non ASB	Sampled	0	B3410	

**SACRAMENTO CITY UNIFIED SCHOOL DISTRICT - AHERA 3 YEAR SUSPECT MATERIAL REPORT**

**DATE PRINTED: 6/29/2011**

<b>SITE: 580</b>		<b>FREMONT</b>				<b>Address: 2420 N STREET, Sacramento 95816</b>				
<b>Building No:</b>	<b>001</b>	<b>Room</b>	<b>O034</b>	<b>Description</b>	<b>Classroom</b>		<b>Drawing No:</b>	<b>2</b>		
<b>Location</b>	<b>Homogeneous Material</b>	<b>Class</b>	<b>Friable</b>	<b>Material Size</b>		<b>Type of Asbestos</b>	<b>Sample Type</b>	<b>% Asbestos</b>	<b>Sample #</b>	
Ceiling	Acoustical Tile, Lay In	M	N	0 SF		Non ASB	Sampled	0	010H01	
Ceiling	Plaster	S	N	286 SF		Non ASB	Sampled	0	D6073	
Wall	Plaster	S	N	688 SF		Non ASB	Sampled	0	E6068	

<b>Building No:</b>	<b>001</b>	<b>Room</b>	<b>O036</b>	<b>Description</b>	<b>Classroom</b>		<b>Drawing No:</b>	<b>2</b>		
<b>Location</b>	<b>Homogeneous Material</b>	<b>Class</b>	<b>Friable</b>	<b>Material Size</b>		<b>Type of Asbestos</b>	<b>Sample Type</b>	<b>% Asbestos</b>	<b>Sample #</b>	
Ceiling	Acoustical Tile, Lay In	M	N	0 SF		Non ASB	Sampled	0	010H01	
Ceiling	Plaster	S	N	900 SF		Non ASB	Sampled	0	D6073	
Wall	Plaster	S	N	1100 SF		Non ASB	Sampled	0	E6068	

<b>Building No:</b>	<b>001</b>	<b>Room</b>	<b>O038</b>	<b>Description</b>	<b>Classroom</b>		<b>Drawing No:</b>	<b>2</b>		
<b>Location</b>	<b>Homogeneous Material</b>	<b>Class</b>	<b>Friable</b>	<b>Material Size</b>		<b>Type of Asbestos</b>	<b>Sample Type</b>	<b>% Asbestos</b>	<b>Sample #</b>	
Ceiling	Acoustical Tile, Lay In	M	N	0 SF		Non ASB	Sampled	0	010H01	
Ceiling	Plaster	S	N	1030 SF		Non ASB	Sampled	0	D6073	
Wall	Plaster	S	N	1200 SF		Non ASB	Sampled	0	E6068	

<b>Building No:</b>	<b>001</b>	<b>Room</b>	<b>O040</b>	<b>Description</b>	<b>Classroom</b>		<b>Drawing No:</b>	<b>2</b>		
<b>Location</b>	<b>Homogeneous Material</b>	<b>Class</b>	<b>Friable</b>	<b>Material Size</b>		<b>Type of Asbestos</b>	<b>Sample Type</b>	<b>% Asbestos</b>	<b>Sample #</b>	
Ceiling	Acoustical Tile, Lay In	M	N	0 SF		Non ASB	Sampled	0	010H01	
Ceiling	Plaster	S	N	660 SF		Non ASB	Sampled	0	D6073	
Wall	Plaster	S	N	940 SF		Non ASB	Sampled	0	E6068	
Wall	Transite Chalk Board	M	N	64 SF		Other	Assumed	N/A		

<b>Building No:</b>	<b>001</b>	<b>Room</b>	<b>S000</b>	<b>Description</b>	<b>Storage</b>		<b>Drawing No:</b>	<b>1</b>		
<b>Location</b>	<b>Homogeneous Material</b>	<b>Class</b>	<b>Friable</b>	<b>Material Size</b>		<b>Type of Asbestos</b>	<b>Sample Type</b>	<b>% Asbestos</b>	<b>Sample #</b>	
Wall	Fiberboard	M	N	SF		Non ASB	Sampled	0	B3418	
Wall	Sheet Rock	m	N	SF		Non ASB	Sampled	0	B3479 Behind fiberboard panels	

**SACRAMENTO CITY UNIFIED SCHOOL DISTRICT - AHRA 3 YEAR SUSPECT MATERIAL REPORT**

**DATE PRINTED: 6/29/2011**

<b>SITE: 580</b>		<b>FREMONT</b>				<b>Address: 2420 N STREET, Sacramento 95816</b>				
<b>Building No:</b>	<b>001</b>	<b>Room</b>	<b>S001</b>	<b>Description</b>	<b>Storage</b>		<b>Drawing No:</b>	<b>1</b>		
<b>Location</b>	<b>Homogeneous Material</b>	<b>Class</b>	<b>Friable</b>	<b>Material Size</b>		<b>Type of Asbestos</b>	<b>Sample Type</b>	<b>% Asbestos</b>	<b>Sample #</b>	
Ceiling	Plaster	S	N	264	SF	Non ASB	Sampled	0	D6073	
Wall	Plaster	S	N	720	SF	Non ASB	Sampled	0	E6068	
Wall	Sheet Rock	M	N		SF	Non ASB	Sampled	0	B3413	

<b>Building No:</b>	<b>001</b>	<b>Room</b>	<b>S002</b>	<b>Description</b>	<b>Storage</b>		<b>Drawing No:</b>	<b>1</b>		
<b>Location</b>	<b>Homogeneous Material</b>	<b>Class</b>	<b>Friable</b>	<b>Material Size</b>		<b>Type of Asbestos</b>	<b>Sample Type</b>	<b>% Asbestos</b>	<b>Sample #</b>	
Ceiling	Acoustical Tile, Lay In	M	N	0	SF	Non ASB	Sampled	0	010H00	
Ceiling	Plaster	S	N	96	SF	Non ASB	Sampled	0	D6073	
Wall	Plaster	S	N	480	SF	Non ASB	Sampled	0	E6068	

<b>Building No:</b>	<b>001</b>	<b>Room</b>	<b>S004</b>	<b>Description</b>	<b>Storage</b>		<b>Drawing No:</b>	<b>1</b>		
<b>Location</b>	<b>Homogeneous Material</b>	<b>Class</b>	<b>Friable</b>	<b>Material Size</b>		<b>Type of Asbestos</b>	<b>Sample Type</b>	<b>% Asbestos</b>	<b>Sample #</b>	
Ceiling	Plaster	S	N	100	SF	Non ASB	Sampled	0	T1942	
Wall	Plaster	S	N	160	SF	Non ASB	Sampled	0	T1934	

<b>Building No:</b>	<b>001</b>	<b>Room</b>	<b>S00T</b>	<b>Description</b>	<b>Storage</b>		<b>Drawing No:</b>	<b>1</b>		
<b>Location</b>	<b>Homogeneous Material</b>	<b>Class</b>	<b>Friable</b>	<b>Material Size</b>		<b>Type of Asbestos</b>	<b>Sample Type</b>	<b>% Asbestos</b>	<b>Sample #</b>	
Ceiling	Plaster	S	Y	120	SF	Non ASB	Sampled	0	D6073	
Wall	Plaster	S	Y	370	SF	Non ASB	Sampled	0	E6068	

<b>Building No:</b>	<b>001</b>	<b>Room</b>	<b>S014</b>	<b>Description</b>	<b>Storage</b>		<b>Drawing No:</b>	<b>1</b>		
<b>Location</b>	<b>Homogeneous Material</b>	<b>Class</b>	<b>Friable</b>	<b>Material Size</b>		<b>Type of Asbestos</b>	<b>Sample Type</b>	<b>% Asbestos</b>	<b>Sample #</b>	
Ceiling	Plaster	S	N	96	SF	Non ASB	Sampled	0	D6073	
Wall	Plaster	S	N	400	SF	Non ASB	Sampled	0	E6068	

<b>Building No:</b>	<b>001</b>	<b>Room</b>	<b>S017</b>	<b>Description</b>	<b>Storage</b>		<b>Drawing No:</b>	<b>1</b>		
<b>Location</b>	<b>Homogeneous Material</b>	<b>Class</b>	<b>Friable</b>	<b>Material Size</b>		<b>Type of Asbestos</b>	<b>Sample Type</b>	<b>% Asbestos</b>	<b>Sample #</b>	
Ceiling	Plaster	S	N	12	SF	Non ASB	Sampled	0	T1942	
Wall	Plaster	S	N	80	SF	Non ASB	Sampled	0	T1934	



**SACRAMENTO CITY UNIFIED SCHOOL DISTRICT - AHERA 3 YEAR SUSPECT MATERIAL REPORT**

**DATE PRINTED: 6/29/2011**

<b>SITE: 580</b>		<b>FREMONT</b>			<b>Address: 2420 N STREET, Sacramento 95816</b>				
<b>Building No:</b>	<b>001</b>	<b>Room</b>	<b>S02A</b>	<b>Description</b>	<b>Storage</b>		<b>Drawing No:</b>	<b>1</b>	
<b>Location</b>	<b>Homogeneous Material</b>	<b>Class</b>	<b>Friable</b>	<b>Material Size</b>	<b>Type of Asbestos</b>	<b>Sample Type</b>	<b>% Asbestos</b>	<b>Sample #</b>	
Wall	Plaster	S	N	440 SF	Non ASB	Sampled	0	E6068	

<b>Building No:</b>	<b>001</b>	<b>Room</b>	<b>S02B</b>	<b>Description</b>	<b>Storage</b>		<b>Drawing No:</b>	<b>1</b>	
<b>Location</b>	<b>Homogeneous Material</b>	<b>Class</b>	<b>Friable</b>	<b>Material Size</b>	<b>Type of Asbestos</b>	<b>Sample Type</b>	<b>% Asbestos</b>	<b>Sample #</b>	
Wall	Plaster	S	N	440 SF	Non ASB	Sampled	0	E6068	

<b>Building No:</b>	<b>001</b>	<b>Room</b>	<b>S034</b>	<b>Description</b>	<b>Storage</b>		<b>Drawing No:</b>	<b>1</b>	
<b>Location</b>	<b>Homogeneous Material</b>	<b>Class</b>	<b>Friable</b>	<b>Material Size</b>	<b>Type of Asbestos</b>	<b>Sample Type</b>	<b>% Asbestos</b>	<b>Sample #</b>	
Ceiling	Plaster	S	N	10 SF	Non ASB	Sampled	0	T1942	
Wall	Plaster	S	N	72 SF	Non ASB	Sampled	0	T1934	
Wall	Vinyl Sheet	M	N	10 SF	Non ASB	Sampled	0	B3410	

<b>Building No:</b>	<b>001</b>	<b>Room</b>	<b>S036</b>	<b>Description</b>	<b>Storage</b>		<b>Drawing No:</b>	<b>2</b>	
<b>Location</b>	<b>Homogeneous Material</b>	<b>Class</b>	<b>Friable</b>	<b>Material Size</b>	<b>Type of Asbestos</b>	<b>Sample Type</b>	<b>% Asbestos</b>	<b>Sample #</b>	
Ceiling	Acoustical Tile, Lay In	M	N	0 SF	Non ASB	Sampled	0	010H01	
Ceiling	Plaster	S	Y	220 SF	Non ASB	Sampled	0	D6073	
Flooring	Vinyl Sheet	M	N	220 SF	Non ASB	Sampled	0		
Misc.	Debris	M	Y	0 SF	Other	Assumed	N/A		
Wall	Plaster	S	N	640 SF	Non ASB	Sampled	0	E6068	

<b>Building No:</b>	<b>001</b>	<b>Room</b>	<b>S038</b>	<b>Description</b>	<b>Storage</b>		<b>Drawing No:</b>	<b>1</b>	
<b>Location</b>	<b>Homogeneous Material</b>	<b>Class</b>	<b>Friable</b>	<b>Material Size</b>	<b>Type of Asbestos</b>	<b>Sample Type</b>	<b>% Asbestos</b>	<b>Sample #</b>	
Ceiling	Plaster	S	N	154 SF	Non ASB	Sampled	0	D6073	
Wall	Plaster	S	N	540 SF	Non ASB	Sampled	0	E6068	

<b>Building No:</b>	<b>001</b>	<b>Room</b>	<b>S03A</b>	<b>Description</b>	<b>Storage</b>		<b>Drawing No:</b>	<b>1</b>	
<b>Location</b>	<b>Homogeneous Material</b>	<b>Class</b>	<b>Friable</b>	<b>Material Size</b>	<b>Type of Asbestos</b>	<b>Sample Type</b>	<b>% Asbestos</b>	<b>Sample #</b>	
Wall	Plaster	S	N	440 SF	Non ASB	Sampled	0	E6068	

**SACRAMENTO CITY UNIFIED SCHOOL DISTRICT - AHERA 3 YEAR SUSPECT MATERIAL REPORT**

**DATE PRINTED: 6/29/2011**

<b>SITE: 580</b>		<b>FREMONT</b>				<b>Address: 2420 N STREET, Sacramento 95816</b>			
<b>Building No:</b>	<b>001</b>	<b>Room</b>	<b>S03B</b>	<b>Description</b>	<b>Storage</b>	<b>Drawing No:</b>	<b>1</b>		
<b>Location</b>	<b>Homogeneous Material</b>	<b>Class</b>	<b>Friable</b>	<b>Material Size</b>	<b>Type of Asbestos</b>	<b>Sample Type</b>	<b>% Asbestos</b>	<b>Sample #</b>	
Wall	Plaster	S	N	440 SF	Non ASB	Sampled	0	E6068	

<b>Building No:</b>	<b>001</b>	<b>Room</b>	<b>S04A</b>	<b>Description</b>	<b>Storage</b>	<b>Drawing No:</b>	<b>1</b>		
<b>Location</b>	<b>Homogeneous Material</b>	<b>Class</b>	<b>Friable</b>	<b>Material Size</b>	<b>Type of Asbestos</b>	<b>Sample Type</b>	<b>% Asbestos</b>	<b>Sample #</b>	
Wall	Plaster	S	N	440 SF	Non ASB	Sampled	0	E6068	

<b>Building No:</b>	<b>001</b>	<b>Room</b>	<b>S04B</b>	<b>Description</b>	<b>Storage</b>	<b>Drawing No:</b>	<b>1</b>		
<b>Location</b>	<b>Homogeneous Material</b>	<b>Class</b>	<b>Friable</b>	<b>Material Size</b>	<b>Type of Asbestos</b>	<b>Sample Type</b>	<b>% Asbestos</b>	<b>Sample #</b>	
Wall	Plaster	S	N	440 SF	Non ASB	Sampled	0	E6068	

<b>Building No:</b>	<b>001</b>	<b>Room</b>	<b>S05A</b>	<b>Description</b>	<b>Storage</b>	<b>Drawing No:</b>	<b>1</b>		
<b>Location</b>	<b>Homogeneous Material</b>	<b>Class</b>	<b>Friable</b>	<b>Material Size</b>	<b>Type of Asbestos</b>	<b>Sample Type</b>	<b>% Asbestos</b>	<b>Sample #</b>	
Wall	Plaster	S	N	440 SF	Non ASB	Sampled	0	E6068	

<b>Building No:</b>	<b>001</b>	<b>Room</b>	<b>S05B</b>	<b>Description</b>	<b>Storage</b>	<b>Drawing No:</b>	<b>1</b>		
<b>Location</b>	<b>Homogeneous Material</b>	<b>Class</b>	<b>Friable</b>	<b>Material Size</b>	<b>Type of Asbestos</b>	<b>Sample Type</b>	<b>% Asbestos</b>	<b>Sample #</b>	
Wall	Plaster	S	N	440 SF	Non ASB	Sampled	0	E6068	

<b>Building No:</b>	<b>001</b>	<b>Room</b>	<b>S09A</b>	<b>Description</b>	<b>Storage</b>	<b>Drawing No:</b>	<b>1</b>		
<b>Location</b>	<b>Homogeneous Material</b>	<b>Class</b>	<b>Friable</b>	<b>Material Size</b>	<b>Type of Asbestos</b>	<b>Sample Type</b>	<b>% Asbestos</b>	<b>Sample #</b>	
Ceiling	Acoustical Tile, Lay In	M	N	0 SF	Non ASB	Sampled	0	010H01	
Ceiling	Plaster	S	N	115 SF	Non ASB	Sampled	0	D6073	
Wall	Plaster	S	N	520 SF	Non ASB	Sampled	0	E6068	
Wall	Vinyl Sheet	M	N	115 SF	Non ASB	Sampled	0	B3410	

**SACRAMENTO CITY UNIFIED SCHOOL DISTRICT - AHERA 3 YEAR SUSPECT MATERIAL REPORT**

DATE PRINTED: 6/29/2011

SITE: 580		FREMONT				Address: 2420 N STREET, Sacramento 95816				
Building No:	001	Room	S09B	Description	Storage		Drawing No:	1		
Location		Homogeneous Material		Class	Friable	Material Size	Type of Asbestos	Sample Type	% Asbestos	Sample #
Ceiling		Plaster		S	Y	115 SF	Non ASB	Sampled	0	D6073
Flooring		Vinyl Sheet		M	N	115 SF	Other	Assumed	N/A	
Wall		Plaster		S	N	520 SF	Non ASB	Sampled	0	E6068
Wall		Vinyl Sheet		M	N	0 SF	Non ASB	Sampled	0	B3410

Building No:	001	Room	S0A1	Description	Storage		Drawing No:	1	No Suspect Materials Present	
Location		Homogeneous Material		Class	Friable	Material Size	Type of Asbestos	Sample Type	% Asbestos	Sample #

Building No:	001	Room	S0A2	Description	Storage		Drawing No:	1		
Location		Homogeneous Material		Class	Friable	Material Size	Type of Asbestos	Sample Type	% Asbestos	Sample #
Ceiling		Plaster		S	Y	30 SF	Non ASB	Sampled	0	D6073
Wall		Plaster		S	N	SF	Non ASB	Sampled	0	E6068

Building No:	001	Room	S11A	Description	Storage		Drawing No:	1		
Location		Homogeneous Material		Class	Friable	Material Size	Type of Asbestos	Sample Type	% Asbestos	Sample #
Ceiling		Plaster		S	N	115 SF	Non ASB	Sampled	0	D6073
Wall		Plaster		S	N	520 SF	Non ASB	Sampled	0	E6068
Wall		Vinyl Sheet		M	N	115 SF	Non ASB	Sampled	0	B3410

Building No:	001	Room	S11B	Description	Storage		Drawing No:	1		
Location		Homogeneous Material		Class	Friable	Material Size	Type of Asbestos	Sample Type	% Asbestos	Sample #
Ceiling		Plaster		S	N	115 SF	Non ASB	Sampled	0	D6073
Wall		Plaster		S	N	520 SF	Non ASB	Sampled	0	E6068
Wall		Vinyl Sheet		M	N	115 SF	Non ASB	Sampled	0	B3410

Building No:	001	Room	S22A	Description	Storage		Drawing No:	2		
Location		Homogeneous Material		Class	Friable	Material Size	Type of Asbestos	Sample Type	% Asbestos	Sample #
Ceiling		Plaster		S	N	85 SF	Non ASB	Sampled	0	D6073
Wall		Plaster		S	N	400 SF	Non ASB	Sampled	0	E6088

**SACRAMENTO CITY UNIFIED SCHOOL DISTRICT - AHERA 3 YEAR SUSPECT MATERIAL REPORT**

**DATE PRINTED: 6/29/2011**

**SITE: 580**      **FREMONT**      **Address: 2420 N STREET, Sacramento 95816**

**Building No: 001**    **Room S22B**    **Description**    **Storage**    **Drawing No: 2**

Location	Homogeneous Material	Class	Friable	Material Size	Type of Asbestos	Sample Type	% Asbestos	Sample #
Ceiling	Plaster	S	N	85 SF	Non ASB	Sampled	0	D6073
Wall	Plaster	S	N	400 SF	Non ASB	Sampled	0	E6068

**Building No: 001**    **Room S23A**    **Description**    **Storage**    **Drawing No: 2**

Location	Homogeneous Material	Class	Friable	Material Size	Type of Asbestos	Sample Type	% Asbestos	Sample #
Ceiling	Plaster	S	N	85 SF	Non ASB	Sampled	0	D6073
Wall	Plaster	S	N	400 SF	Non ASB	Sampled	0	E6068

**Building No: 001**    **Room S23B**    **Description**    **Storage**    **Drawing No: 2**

Location	Homogeneous Material	Class	Friable	Material Size	Type of Asbestos	Sample Type	% Asbestos	Sample #
Ceiling	Plaster	S	N	85 SF	Non ASB	Sampled	0	D6073
Wall	Plaster	S	N	400 SF	Non ASB	Sampled	0	E6068

**Building No: 001**    **Room S24A**    **Description**    **Storage**    **Drawing No: 2**

Location	Homogeneous Material	Class	Friable	Material Size	Type of Asbestos	Sample Type	% Asbestos	Sample #
Ceiling	Plaster	S	N	85 SF	Non ASB	Sampled	0	D6073
Wall	Plaster	S	N	400 SF	Non ASB	Sampled	0	E6068

**Building No: 001**    **Room S24B**    **Description**    **Storage**    **Drawing No: 2**

Location	Homogeneous Material	Class	Friable	Material Size	Type of Asbestos	Sample Type	% Asbestos	Sample #
Ceiling	Plaster	S	N	85 SF	Non ASB	Sampled	0	D6073
Wall	Plaster	S	N	400 SF	Non ASB	Sampled	0	E6068

**Building No: 001**    **Room S25A**    **Description**    **Storage**    **Drawing No: 2**

Location	Homogeneous Material	Class	Friable	Material Size	Type of Asbestos	Sample Type	% Asbestos	Sample #
Ceiling	Plaster	S	N	85 SF	Non ASB	Sampled	0	D6073
Wall	Plaster	S	N	400 SF	Non ASB	Sampled	0	E6068

**SACRAMENTO CITY UNIFIED SCHOOL DISTRICT - AHERA 3 YEAR SUSPECT MATERIAL REPORT**

**DATE PRINTED: 6/29/2011**

<b>SITE: 580</b>		<b>FREMONT</b>				<b>Address: 2420 N STREET, Sacramento 95816</b>				
<b>Building No:</b>	<b>001</b>	<b>Room</b>	<b>S25B</b>	<b>Description</b>	<b>Storage</b>		<b>Drawing No:</b>	<b>2</b>		
<b>Location</b>	<b>Homogeneous Material</b>	<b>Class</b>	<b>Friable</b>	<b>Material Size</b>		<b>Type of Asbestos</b>	<b>Sample Type</b>	<b>% Asbestos</b>	<b>Sample #</b>	
Ceiling	Plaster	S	N	85	SF	Non ASB	Sampled	0	D6073	
Wall	Plaster	S	N	400	SF	Non ASB	Sampled	0	E6068	

<b>Building No:</b>	<b>001</b>	<b>Room</b>	<b>S27A</b>	<b>Description</b>	<b>Storage</b>		<b>Drawing No:</b>	<b>2</b>		
<b>Location</b>	<b>Homogeneous Material</b>	<b>Class</b>	<b>Friable</b>	<b>Material Size</b>		<b>Type of Asbestos</b>	<b>Sample Type</b>	<b>% Asbestos</b>	<b>Sample #</b>	
Ceiling	Plaster	S	N	90	SF	Non ASB	Sampled	0	D6073	
Wall	Plaster	S	N	550	SF	Non ASB	Sampled	0	E6068	

<b>Building No:</b>	<b>001</b>	<b>Room</b>	<b>S27B</b>	<b>Description</b>	<b>Storage</b>		<b>Drawing No:</b>	<b>2</b>		
<b>Location</b>	<b>Homogeneous Material</b>	<b>Class</b>	<b>Friable</b>	<b>Material Size</b>		<b>Type of Asbestos</b>	<b>Sample Type</b>	<b>% Asbestos</b>	<b>Sample #</b>	
Ceiling	Plaster	S	N	90	SF	Non ASB	Sampled	0	D6073	
Wall	Plaster	S	N	550	SF	Non ASB	Sampled	0	E6068	

<b>Building No:</b>	<b>001</b>	<b>Room</b>	<b>S28A</b>	<b>Description</b>	<b>Storage</b>		<b>Drawing No:</b>	<b>2</b>		
<b>Location</b>	<b>Homogeneous Material</b>	<b>Class</b>	<b>Friable</b>	<b>Material Size</b>		<b>Type of Asbestos</b>	<b>Sample Type</b>	<b>% Asbestos</b>	<b>Sample #</b>	
Ceiling	Plaster	S	Y	162	SF	Non ASB	Sampled	0	D6073	
Wall	Plaster	S	N	500	SF	Non ASB	Sampled	0	E6068	

<b>Building No:</b>	<b>001</b>	<b>Room</b>	<b>S28B</b>	<b>Description</b>	<b>Storage</b>		<b>Drawing No:</b>	<b>2</b>		
<b>Location</b>	<b>Homogeneous Material</b>	<b>Class</b>	<b>Friable</b>	<b>Material Size</b>		<b>Type of Asbestos</b>	<b>Sample Type</b>	<b>% Asbestos</b>	<b>Sample #</b>	
Ceiling	Plaster	S	Y	162	SF	Non ASB	Sampled	0	D6073	
Wall	Plaster	S	N	500	SF	Non ASB	Sampled	0	E6068	

<b>Building No:</b>	<b>001</b>	<b>Room</b>	<b>S29A</b>	<b>Description</b>	<b>Storage</b>		<b>Drawing No:</b>	<b>2</b>		
<b>Location</b>	<b>Homogeneous Material</b>	<b>Class</b>	<b>Friable</b>	<b>Material Size</b>		<b>Type of Asbestos</b>	<b>Sample Type</b>	<b>% Asbestos</b>	<b>Sample #</b>	
Ceiling	Plaster	S	Y	90	SF	Non ASB	Sampled	0	D6073	
Wall	Plaster	S	N	550	SF	Non ASB	Sampled	0	E6068	

**SACRAMENTO CITY UNIFIED SCHOOL DISTRICT - AHERA 3 YEAR SUSPECT MATERIAL REPORT**

**DATE PRINTED: 6/29/2011**

<b>SITE: 580</b>		<b>FREMONT</b>				<b>Address: 2420 N STREET, Sacramento 95816</b>				
<b>Building No:</b>	<b>001</b>	<b>Room</b>	<b>S29B</b>	<b>Description</b>	<b>Storage</b>		<b>Drawing No:</b>	<b>2</b>		
<b>Location</b>	<b>Homogeneous Material</b>		<b>Class</b>	<b>Friable</b>	<b>Material Size</b>		<b>Type of Asbestos</b>	<b>Sample Type</b>	<b>% Asbestos</b>	<b>Sample #</b>
Ceiling	Plaster		S	Y	90 SF		Non ASB	Sampled	0	D6073
Wall	Plaster		S	N	550 SF		Non ASB	Sampled	0	E6068

<b>Building No:</b>	<b>001</b>	<b>Room</b>	<b>S30A</b>	<b>Description</b>	<b>Storage</b>		<b>Drawing No:</b>	<b>2</b>		
<b>Location</b>	<b>Homogeneous Material</b>		<b>Class</b>	<b>Friable</b>	<b>Material Size</b>		<b>Type of Asbestos</b>	<b>Sample Type</b>	<b>% Asbestos</b>	<b>Sample #</b>
Ceiling	Plaster		S	N	162 SF		Non ASB	Sampled	0	D6073
Wall	Plaster		S	N	500 SF		Non ASB	Sampled	0	E6068

<b>Building No:</b>	<b>001</b>	<b>Room</b>	<b>S30B</b>	<b>Description</b>	<b>Storage</b>		<b>Drawing No:</b>	<b>2</b>		
<b>Location</b>	<b>Homogeneous Material</b>		<b>Class</b>	<b>Friable</b>	<b>Material Size</b>		<b>Type of Asbestos</b>	<b>Sample Type</b>	<b>% Asbestos</b>	<b>Sample #</b>
Ceiling	Plaster		S	N	162 SF		Non ASB	Sampled	0	D6073
Wall	Plaster		S	N	500 SF		Non ASB	Sampled	0	E6068

<b>Building No:</b>	<b>001</b>	<b>Room</b>	<b>S31A</b>	<b>Description</b>	<b>Storage</b>		<b>Drawing No:</b>	<b>2</b>		
<b>Location</b>	<b>Homogeneous Material</b>		<b>Class</b>	<b>Friable</b>	<b>Material Size</b>		<b>Type of Asbestos</b>	<b>Sample Type</b>	<b>% Asbestos</b>	<b>Sample #</b>
Ceiling	Plaster		S	N	162 SF		Non ASB	Sampled	0	D6073
Wall	Plaster		S	N	500 SF		Non ASB	Sampled	0	E6068

<b>Building No:</b>	<b>001</b>	<b>Room</b>	<b>S31B</b>	<b>Description</b>	<b>Storage</b>		<b>Drawing No:</b>	<b>2</b>		
<b>Location</b>	<b>Homogeneous Material</b>		<b>Class</b>	<b>Friable</b>	<b>Material Size</b>		<b>Type of Asbestos</b>	<b>Sample Type</b>	<b>% Asbestos</b>	<b>Sample #</b>
Ceiling	Plaster		S	N	162 SF		Non ASB	Sampled	0	D6073
Wall	Plaster		S	N	500 SF		Non ASB	Sampled	0	E6068

<b>Building No:</b>	<b>001</b>	<b>Room</b>	<b>S32A</b>	<b>Description</b>	<b>Storage</b>		<b>Drawing No:</b>	<b>2</b>		
<b>Location</b>	<b>Homogeneous Material</b>		<b>Class</b>	<b>Friable</b>	<b>Material Size</b>		<b>Type of Asbestos</b>	<b>Sample Type</b>	<b>% Asbestos</b>	<b>Sample #</b>
Ceiling	Plaster		S	N	90 SF		Non ASB	Sampled	0	D6073
Wall	Plaster		S	N	550 SF		Non ASB	Sampled	0	E6068

**SACRAMENTO CITY UNIFIED SCHOOL DISTRICT - AHERA 3 YEAR SUSPECT MATERIAL REPORT**

**DATE PRINTED: 6/29/2011**

**SITE: 580**      **FREMONT**      **Address: 2420 N STREET, Sacramento 95816**

**Building No: 001**    **Room S32B**    **Description Storage**    **Drawing No: 2**

Location	Homogeneous Material	Class	Friable	Material Size	Type of Asbestos	Sample Type	% Asbestos	Sample #
Ceiling	Plaster	S	N	90 SF	Non ASB	Sampled	0	D6073
Wall	Plaster	S	N	550 SF	Non ASB	Sampled	0	E6068

**Building No: 001**    **Room T001**    **Description Toilet**    **Drawing No: 1**

Location	Homogeneous Material	Class	Friable	Material Size	Type of Asbestos	Sample Type	% Asbestos	Sample #
Ceiling	Plaster	S	N	32 SF	Non ASB	Sampled	0	D6073
Wall	Plaster	S	N	280 SF	Non ASB	Sampled	0	E6068

**Building No: 001**    **Room T002**    **Description Toilet**    **Drawing No: 1**

Location	Homogeneous Material	Class	Friable	Material Size	Type of Asbestos	Sample Type	% Asbestos	Sample #
Ceiling	Plaster	S	N	500 SF	Non ASB	Sampled	0	D6073
Wall	Plaster	S	N	700 SF	Non ASB	Sampled	0	E6068

**Building No: 001**    **Room T003**    **Description Toilet**    **Drawing No: 1**

Location	Homogeneous Material	Class	Friable	Material Size	Type of Asbestos	Sample Type	% Asbestos	Sample #
Ceiling	Plaster	S	N	374 SF	Non ASB	Sampled	0	D6073
Wall	Plaster	S	N	610 SF	Non ASB	Sampled	0	E6068

**Building No: 001**    **Room T004**    **Description Toilet**    **Drawing No: 1**

Location	Homogeneous Material	Class	Friable	Material Size	Type of Asbestos	Sample Type	% Asbestos	Sample #
Ceiling	Plaster	S	Y	330 SF	Non ASB	Sampled	0	D6073
Wall	Plaster	S	N	520 SF	Non ASB	Sampled	0	E6068

**Building No: 001**    **Room T007**    **Description Toilet**    **Drawing No: 1**

Location	Homogeneous Material	Class	Friable	Material Size	Type of Asbestos	Sample Type	% Asbestos	Sample #
Ceiling	Plaster	S	N	198 SF	Non ASB	Sampled	0	D6073
Flooring	Tile 12 In.	M	N	200 SF	Non ASB	Sampled	0	B1943
Wall	Plaster	S	N	560 SF	Non ASB	Sampled	0	E6068
Wall	Vinyl Sheet	M	N	198 SF	Non ASB	Sampled	0	B3410      Under newer flooring

**SACRAMENTO CITY UNIFIED SCHOOL DISTRICT - AHERA 3 YEAR SUSPECT MATERIAL REPORT**

**DATE PRINTED: 6/29/2011**

<b>SITE: 580</b>		<b>FREMONT</b>				<b>Address: 2420 N STREET, Sacramento 95816</b>					
<b>Building No:</b>	<b>001</b>	<b>Room</b>	<b>T017</b>	<b>Description</b>		<b>Toilet</b>		<b>Drawing No:</b>	<b>1</b>		
<b>Location</b>		<b>Homogeneous Material</b>		<b>Class</b>	<b>Friable</b>	<b>Material Size</b>		<b>Type of Asbestos</b>	<b>Sample Type</b>	<b>% Asbestos</b>	<b>Sample #</b>
Ceiling		Plaster		S	N	100 SF		Non ASB	Sampled	0	D6073
Wall		Plaster		S	N	370 SF		Non ASB	Sampled	0	E6068

<b>Building No:</b>	<b>001</b>	<b>Room</b>	<b>T025</b>	<b>Description</b>		<b>Toilet</b>		<b>Drawing No:</b>	<b>2</b>		
<b>Location</b>		<b>Homogeneous Material</b>		<b>Class</b>	<b>Friable</b>	<b>Material Size</b>		<b>Type of Asbestos</b>	<b>Sample Type</b>	<b>% Asbestos</b>	<b>Sample #</b>
Ceiling		Plaster		S	N	55 SF		Non ASB	Sampled	0	D6073
Wall		Plaster		S	N	240 SF		Non ASB	Sampled	0	E6068

<b>Building No:</b>	<b>001</b>	<b>Room</b>	<b>T034</b>	<b>Description</b>		<b>Toilet</b>		<b>Drawing No:</b>	<b>2</b>		
<b>Location</b>		<b>Homogeneous Material</b>		<b>Class</b>	<b>Friable</b>	<b>Material Size</b>		<b>Type of Asbestos</b>	<b>Sample Type</b>	<b>% Asbestos</b>	<b>Sample #</b>
Ceiling		Plaster		S	N	64 SF		Non ASB	Sampled	0	D6073
Flooring		Tile 12 In.		M	N	64 SF		Non ASB	Sampled	0	B1949
Wall		Plaster		S	N	380 SF		Non ASB	Sampled	0	E6068
Wall		Vinyl Sheet		M	N	64 SF		Non ASB	Sampled	0	B3410 Under newer flooring

<b>Building No:</b>	<b>001</b>	<b>Room</b>	<b>T038</b>	<b>Description</b>		<b>Toilet</b>		<b>Drawing No:</b>	<b>2</b>		
<b>Location</b>		<b>Homogeneous Material</b>		<b>Class</b>	<b>Friable</b>	<b>Material Size</b>		<b>Type of Asbestos</b>	<b>Sample Type</b>	<b>% Asbestos</b>	<b>Sample #</b>
Ceiling		Plaster		S	Y	80 SF		Non ASB	Sampled	0	D6073
Wall		Plaster		S	N	250 SF		Non ASB	Sampled	0	E6068

<b>Building No:</b>	<b>001</b>	<b>Room</b>	<b>T03A</b>	<b>Description</b>		<b>Toilet</b>		<b>Drawing No:</b>	<b>2</b>		
<b>Location</b>		<b>Homogeneous Material</b>		<b>Class</b>	<b>Friable</b>	<b>Material Size</b>		<b>Type of Asbestos</b>	<b>Sample Type</b>	<b>% Asbestos</b>	<b>Sample #</b>
Ceiling		Plaster		S	N	180 SF		Non ASB	Sampled	0	T1942
Wall		Plaster		S	N	250 SF		Non ASB	Sampled	0	T1934

<b>Building No:</b>	<b>001</b>	<b>Room</b>	<b>T0A1</b>	<b>Description</b>		<b>Toilet</b>		<b>Drawing No:</b>	<b>1</b>		
<b>Location</b>		<b>Homogeneous Material</b>		<b>Class</b>	<b>Friable</b>	<b>Material Size</b>		<b>Type of Asbestos</b>	<b>Sample Type</b>	<b>% Asbestos</b>	<b>Sample #</b>
Ceiling		Plaster		S	N	40 SF		Non ASB	Sampled	0	D6073
Wall		Plaster		S	N	180 SF		Non ASB	Sampled	0	E6068



**SACRAMENTO CITY UNIFIED SCHOOL DISTRICT - AHERA 3 YEAR SUSPECT MATERIAL REPORT**

DATE PRINTED: 6/29/2011

Page 20 of 23

SITE: 580		FREMONT				Address: 2420 N STREET, Sacramento 95816				
Building No:	001	Room	T0A2	Description	Toilet		Drawing No:	1		
<b>Location</b>	<b>Homogeneous Material</b>	<b>Class</b>	<b>Friable</b>	<b>Material Size</b>		<b>Type of Asbestos</b>	<b>Sample Type</b>	<b>% Asbestos</b>	<b>Sample #</b>	
Ceiling	Plaster	S	N	50	SF	Non ASB	Sampled	0	D6073	
Wall	Plaster	S	N	220	SF	Non ASB	Sampled	0	E6068	

Building No:	001	Room	X014	Description	Library		Drawing No:	1		
<b>Location</b>	<b>Homogeneous Material</b>	<b>Class</b>	<b>Friable</b>	<b>Material Size</b>		<b>Type of Asbestos</b>	<b>Sample Type</b>	<b>% Asbestos</b>	<b>Sample #</b>	
Ceiling	Acoustical Tile, Lay In	M	N	1320	SF	Non ASB	Sampled	0	010H00	
Ceiling	Plaster	S	N	1320	SF	Non ASB	Sampled	0	D6073	
Wall	Fiberboard	M	N		SF	Non ASB	Sampled	0	B3418	
Wall	Plaster	S	N	900	SF	Non ASB	Sampled	0	E6068	
Wall	Sheet Rock	m	N		SF	Non ASB	Sampled	0	B3479 Behind fiberboard panels	

Building No:	001	Room	Y007	Description	Kindergarten		Drawing No:	1		
<b>Location</b>	<b>Homogeneous Material</b>	<b>Class</b>	<b>Friable</b>	<b>Material Size</b>		<b>Type of Asbestos</b>	<b>Sample Type</b>	<b>% Asbestos</b>	<b>Sample #</b>	
Ceiling	Acoustical Tile, Lay In	M	N	1020	SF	Non ASB	Sampled	0	010H01	
Ceiling	Plaster	S	Y	1020	SF	Non ASB	Sampled	0	D6073	
Flooring	Tile 9 In. & Floor Mastic	M	N	1020	SF	Other	Assumed	N/A		
Wall	Plaster	S	N	1000	SF	Non ASB	Sampled	0	E6068	

Building No:	001	Room	Z017	Description	Misc. Room		Drawing No:	1		
<b>Location</b>	<b>Homogeneous Material</b>	<b>Class</b>	<b>Friable</b>	<b>Material Size</b>		<b>Type of Asbestos</b>	<b>Sample Type</b>	<b>% Asbestos</b>	<b>Sample #</b>	
Ceiling	Acoustical Tile, Splined	M	N	120	SF	Non ASB	Sampled	0	B1946	
Ceiling	Plaster	S	N	120	SF	Non ASB	Sampled	0	D6073	
Wall	Plaster	S	N	400	SF	Non ASB	Sampled	0	E6068	
Wall	Vinyl Sheet	M	N	120	SF	Non ASB	Sampled	0	B3410 Under newer flooring	

Building No:	001	Room	ZA01	Description	Attic		Drawing No:	3		
<b>Location</b>	<b>Homogeneous Material</b>	<b>Class</b>	<b>Friable</b>	<b>Material Size</b>		<b>Type of Asbestos</b>	<b>Sample Type</b>	<b>% Asbestos</b>	<b>Sample #</b>	
Ceiling	Plaster	S	Y	10000	SF	Non ASB	Sampled	0	D6073	
Wall	Sheet Rock	M	N	0	SF	Non ASB	Sampled	0	003H02	

**SACRAMENTO CITY UNIFIED SCHOOL DISTRICT - AHERA 3 YEAR SUSPECT MATERIAL REPORT**

**DATE PRINTED: 6/29/2011**

<b>SITE: 580</b>		<b>FREMONT</b>			<b>Address: 2420 N STREET, Sacramento 95816</b>				
<b>Building No:</b>	<b>001</b>	<b>Room</b>	<b>ZC01</b>	<b>Description</b>	<b>Crawl Space</b>		<b>Drawing No:</b>	<b>1A</b>	
<b>Location</b>	<b>Homogeneous Material</b>	<b>Class</b>	<b>Friable</b>	<b>Material Size</b>		<b>Type of Asbestos</b>	<b>Sample Type</b>	<b>% Asbestos</b>	<b>Sample #</b>
Crawl Space	Debris	M	Y	SF		Other	Assumed	N/A	
Piping	Heat Hot Water Insulation	T	Y	800 LF		Other	Assumed	N/A	

<b>Building No:</b>	<b>001</b>	<b>Room</b>	<b>ZC02</b>	<b>Description</b>	<b>Crawl Space</b>		<b>Drawing No:</b>	<b>1A</b>	<b>No Suspect Materials Present</b>
<b>Location</b>	<b>Homogeneous Material</b>	<b>Class</b>	<b>Friable</b>	<b>Material Size</b>		<b>Type of Asbestos</b>	<b>Sample Type</b>	<b>% Asbestos</b>	<b>Sample #</b>

<b>Building No:</b>	<b>001</b>	<b>Room</b>	<b>ZEXT</b>	<b>Description</b>	<b>Exterior</b>		<b>Drawing No:</b>	<b>1</b>	
<b>Location</b>	<b>Homogeneous Material</b>	<b>Class</b>	<b>Friable</b>	<b>Material Size</b>		<b>Type of Asbestos</b>	<b>Sample Type</b>	<b>% Asbestos</b>	<b>Sample #</b>
Exterior, Wall	Non Asbestos, Hardy Panel	m	N	SF		Non ASB	Sampled	0	B3419
Exterior, Wall	Putty, Window	m	N	SF		Non ASB	Sampled	0	B3400

**SACRAMENTO CITY UNIFIED SCHOOL DISTRICT - AHERA 3 YEAR SUSPECT MATERIAL REPORT**

**DATE PRINTED: 6/29/2011**

**SITE: 580** | **FREMONT** | **Address: 2420 N STREET, Sacramento 95816**

**Building No: 002** | **Room H001** | **Description Hallway/Stairs** | **Drawing No: 3**

Location	Homogeneous Material	Class	Friable	Material Size	Type of Asbestos	Sample Type	% Asbestos	Sample #
Ceiling	Acoustical Tile	M	N	180 SF	Non ASB	Sampled	0	T1563
Flooring	Tile 12 In.	M	N	180 SF	Non ASB	Sampled	0	E6066

**Building No: 002** | **Room J001** | **Description Custodial Closet** | **Drawing No: 2**

Location	Homogeneous Material	Class	Friable	Material Size	Type of Asbestos	Sample Type	% Asbestos	Sample #
Ceiling	Sheet Rock	M	N	0 SF	Non ASB	Sampled	0	004H00
Wall	Sheet Rock	M	N	0 SF	Non ASB	Sampled	0	004B00

**Building No: 002** | **Room K001** | **Description Kitchen** | **Drawing No: 3**

Location	Homogeneous Material	Class	Friable	Material Size	Type of Asbestos	Sample Type	% Asbestos	Sample #
Ceiling	Sheet Rock	M	N	56 SF	Non ASB	Sampled	0	T1932
Flooring	Tile 12 In.	M	N	48 SF	Non ASB	Sampled	0	E6066
Wall	Sheet Rock	M	N	300 SF	Non ASB	Sampled	0	T1560

**Building No: 002** | **Room K002** | **Description Kitchen** | **Drawing No: 3**

Location	Homogeneous Material	Class	Friable	Material Size	Type of Asbestos	Sample Type	% Asbestos	Sample #
Ceiling	Acoustical Tile	M	N	54 SF	Non ASB	Sampled	0	T1563
Flooring	Tile 12 In.	M	N	54 SF	Non ASB	Sampled	0	E6066

**Building No: 002** | **Room K003** | **Description Kitchen** | **Drawing No: 3**

Location	Homogeneous Material	Class	Friable	Material Size	Type of Asbestos	Sample Type	% Asbestos	Sample #
Ceiling	Acoustical Tile	M	N	350 SF	Non ASB	Sampled	0	T1563
Flooring	Tile 12 In.	M	N	350 SF	Non ASB	Sampled	0	T1952

**Building No: 002** | **Room L001** | **Description Lunchroom/Cafeteria** | **Drawing No: 3**

Location	Homogeneous Material	Class	Friable	Material Size	Type of Asbestos	Sample Type	% Asbestos	Sample #
Ceiling	Acoustical Tile	M	N	2000 SF	Non ASB	Sampled	0	T1563
Flooring	Tile 12 In.	M	N	2000 SF	Non ASB	Sampled	0	E6066

**SACRAMENTO CITY UNIFIED SCHOOL DISTRICT - AHERA 3 YEAR SUSPECT MATERIAL REPORT**

**DATE PRINTED: 6/29/2011**

<b>SITE: 580</b>		<b>FREMONT</b>				<b>Address: 2420 N STREET, Sacramento 95816</b>				
<b>Building No:</b>	<b>002</b>	<b>Room</b>	<b>M001</b>	<b>Description</b>	<b>Mechanical Room</b>		<b>Drawing No:</b>	<b>3</b>		
<b>Location</b>	<b>Homogeneous Material</b>	<b>Class</b>	<b>Friable</b>	<b>Material Size</b>	<b>Type of Asbestos</b>	<b>Sample Type</b>	<b>% Asbestos</b>	<b>Sample #</b>		
Ceiling	Sheet Rock	M	N	0 SF	Non ASB	Sampled	0	004H00		
Flooring	Tile 12 In.	M	N	20 SF	Non ASB	Sampled	0	E6066		
HVAC	Flex Joint	M	N	6 SF	Other	Assumed	N/A			
Mechanical	Flue	M	Y	8 LF	Other	Assumed	N/A			

<b>Building No:</b>	<b>002</b>	<b>Room</b>	<b>M002</b>	<b>Description</b>	<b>Mechanical Room</b>		<b>Drawing No:</b>	<b>2</b>		
<b>Location</b>	<b>Homogeneous Material</b>	<b>Class</b>	<b>Friable</b>	<b>Material Size</b>	<b>Type of Asbestos</b>	<b>Sample Type</b>	<b>% Asbestos</b>	<b>Sample #</b>		
Ceiling	Sheet Rock	M	N	0 SF	Non ASB	Sampled	0	004H00		
HVAC	Flex Joint	M	N	6 SF	Other	Assumed	N/A			
Mechanical	Flue	M	N	8 LF	Other	Assumed	N/A			
Wall	Sheet Rock	M	N	0 SF	Non ASB	Sampled	0	004B00		

<b>Building No:</b>	<b>002</b>	<b>Room</b>	<b>S001</b>	<b>Description</b>	<b>Storage</b>		<b>Drawing No:</b>	<b>3</b>		
<b>Location</b>	<b>Homogeneous Material</b>	<b>Class</b>	<b>Friable</b>	<b>Material Size</b>	<b>Type of Asbestos</b>	<b>Sample Type</b>	<b>% Asbestos</b>	<b>Sample #</b>		
Flooring	Tile 12 In.	M	N	9 SF	Non ASB	Sampled	0	T1952		

<b>Building No:</b>	<b>002</b>	<b>Room</b>	<b>T001</b>	<b>Description</b>	<b>Toilet</b>		<b>Drawing No:</b>	<b>3</b>		
<b>Location</b>	<b>Homogeneous Material</b>	<b>Class</b>	<b>Friable</b>	<b>Material Size</b>	<b>Type of Asbestos</b>	<b>Sample Type</b>	<b>% Asbestos</b>	<b>Sample #</b>		
Ceiling	Acoustical Tile	M	N	25 SF	Non ASB	Sampled	0	T1563		
Flooring	Mastic	m	N	SF	Non ASB	Sampled	0	B3416		
Flooring	Vinyl Sheet	m	N	SF	Non ASB	Sampled	0	B3416		

<b>Building No:</b>	<b>002</b>	<b>Room</b>	<b>Z001</b>	<b>Description</b>	<b>Misc. Room</b>		<b>Drawing No:</b>	<b>3</b>			<b>No Suspect Materials Present</b>
<b>Location</b>	<b>Homogeneous Material</b>	<b>Class</b>	<b>Friable</b>	<b>Material Size</b>	<b>Type of Asbestos</b>	<b>Sample Type</b>	<b>% Asbestos</b>	<b>Sample #</b>			

<b>Building No:</b>	<b>002</b>	<b>Room</b>	<b>ZEXT</b>	<b>Description</b>	<b>Exterior</b>		<b>Drawing No:</b>	<b>3</b>			<b>No Suspect Materials Present</b>
<b>Location</b>	<b>Homogeneous Material</b>	<b>Class</b>	<b>Friable</b>	<b>Material Size</b>	<b>Type of Asbestos</b>	<b>Sample Type</b>	<b>% Asbestos</b>	<b>Sample #</b>			