

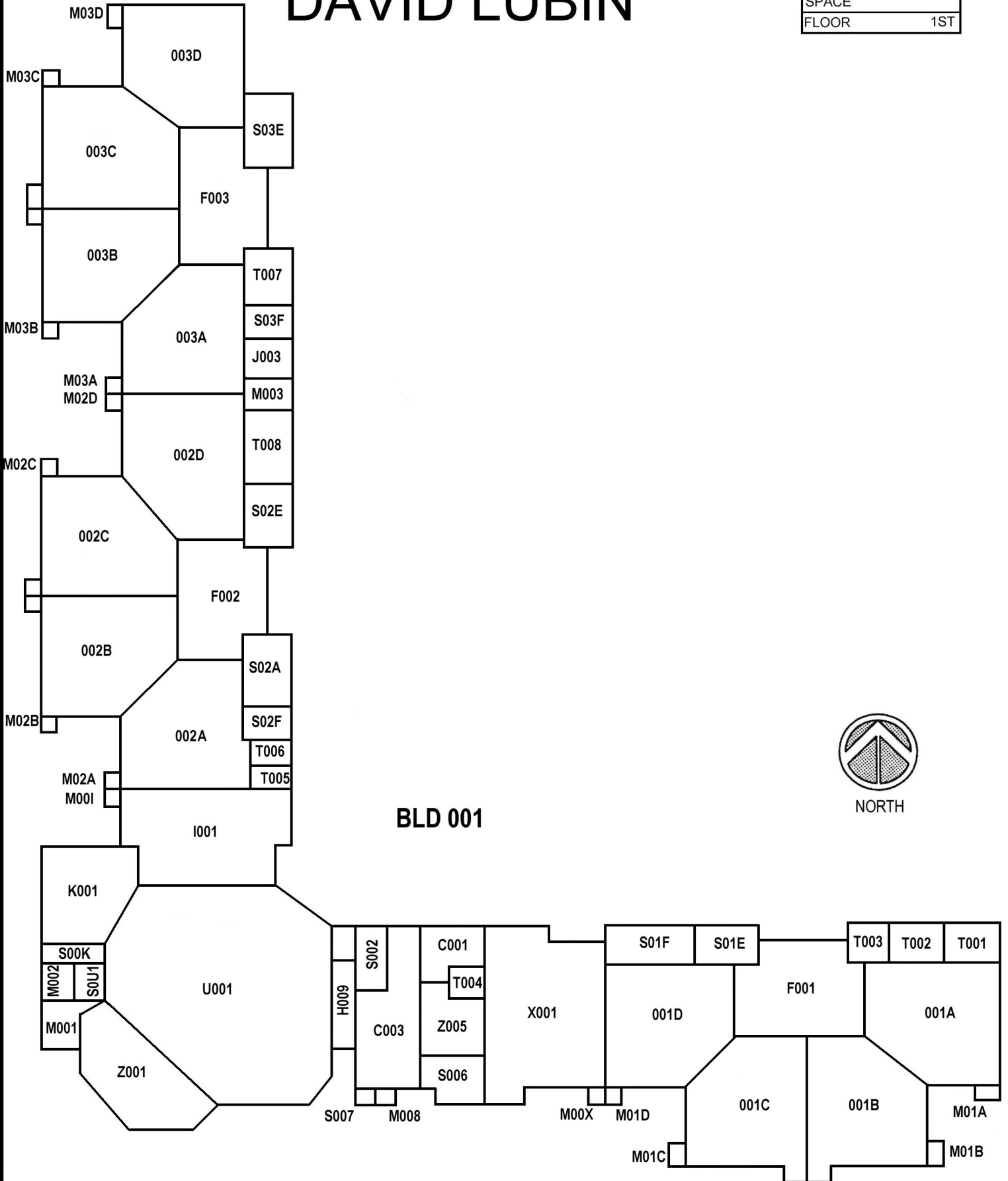
SITE AREA: 4.95 ACRES  
 A.P.N. 007-0201-011

David Lubin Elementary School (059)  
 3535 M Street  
 SACRAMENTO CITY UNIFIED SCHOOL DISTRICT

# AHERA Management Plan

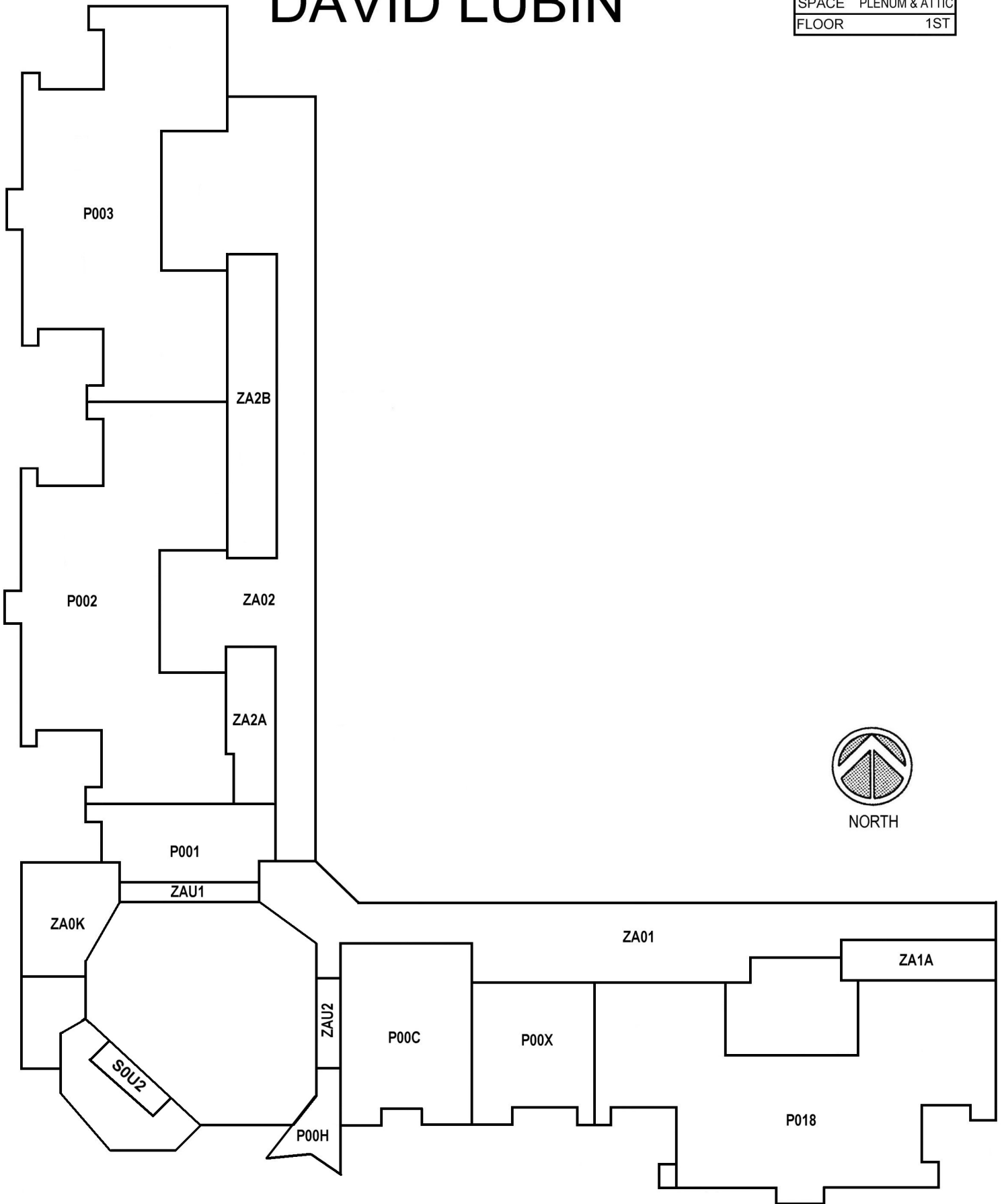
# DAVID LUBIN

DRAWING NO.	1
SPACE	
FLOOR	1ST



# DAVID LUBIN

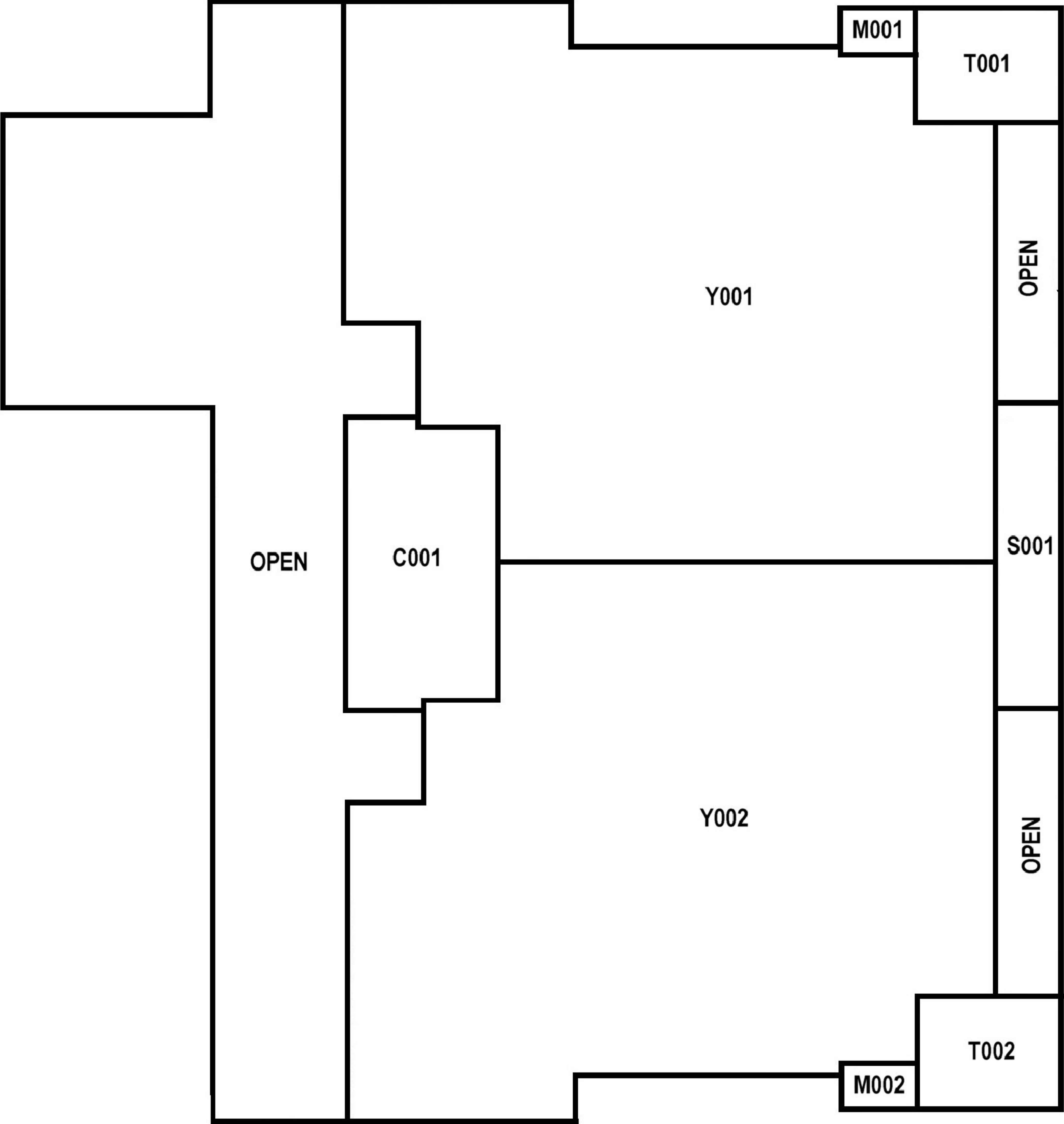
DRAWING NO.	1A
SPACE	PLENUM & ATTIC
FLOOR	1ST



# DAVID LUBIN

DRAWING NO.	2
SPACE	
FLOOR	1ST

## BLD 003

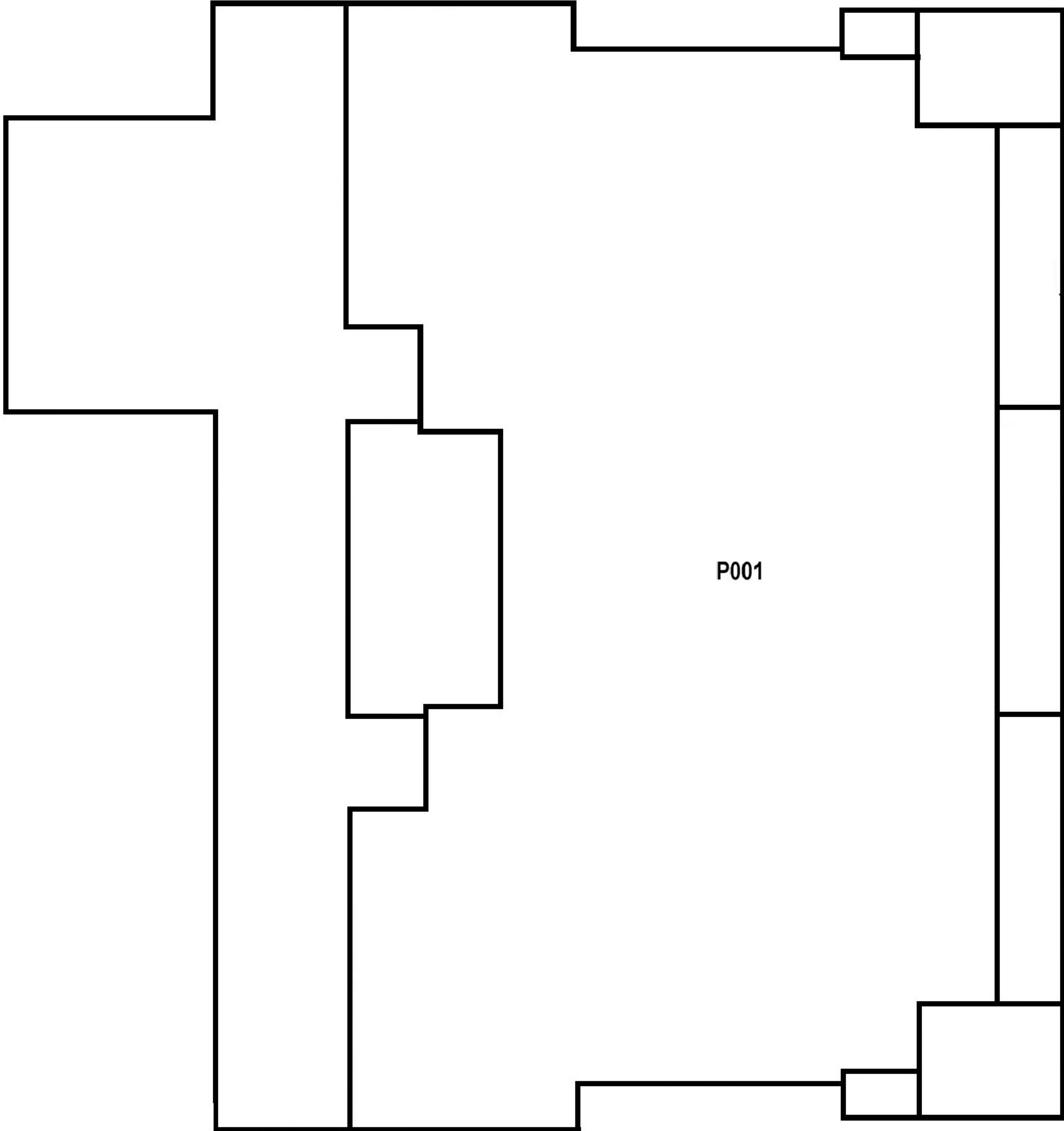


NORTH

# DAVID LUBIN

DRAWING NO.	2A
SPACE	PLENUM
FLOOR	1ST

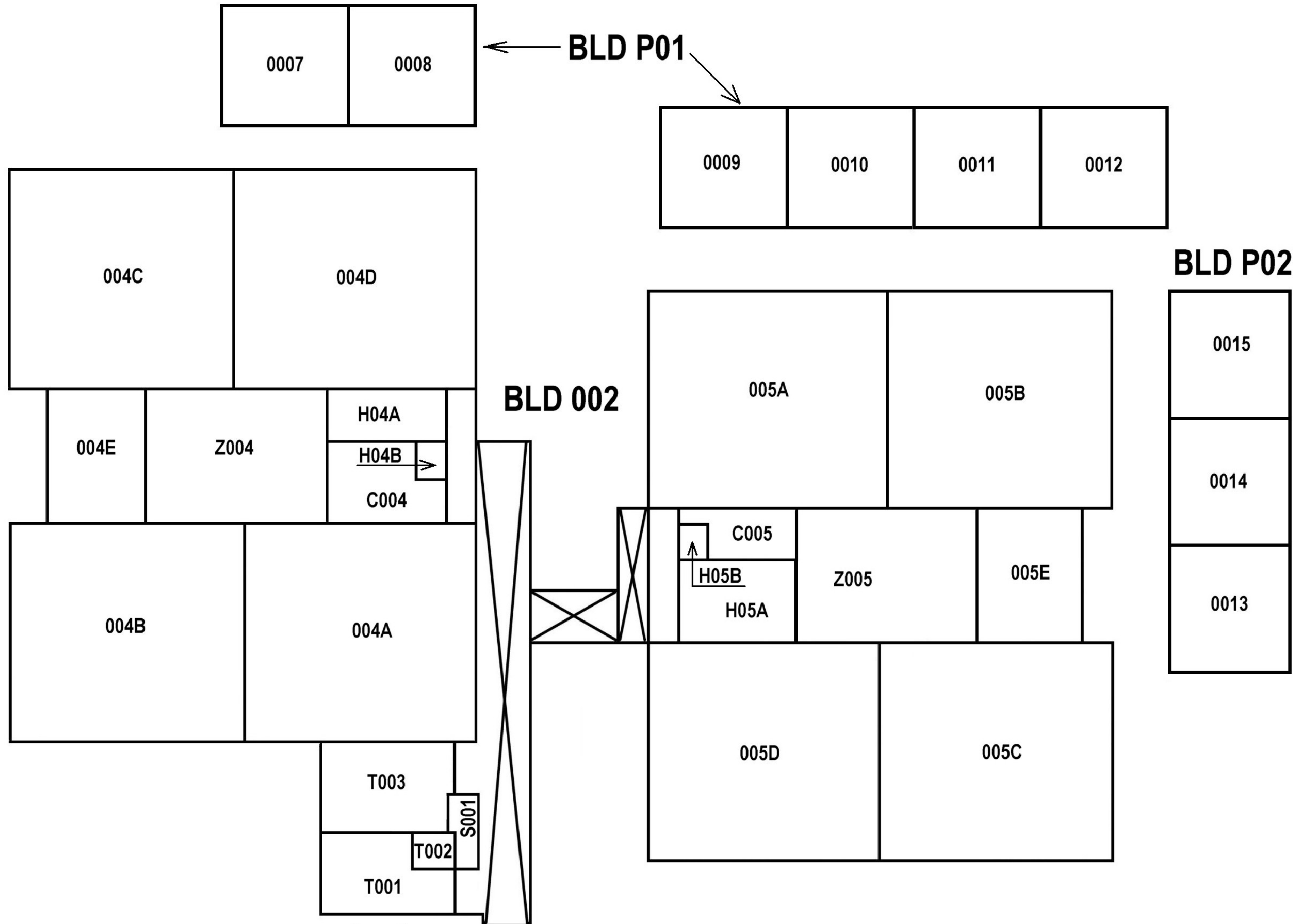
BLD 003



P001



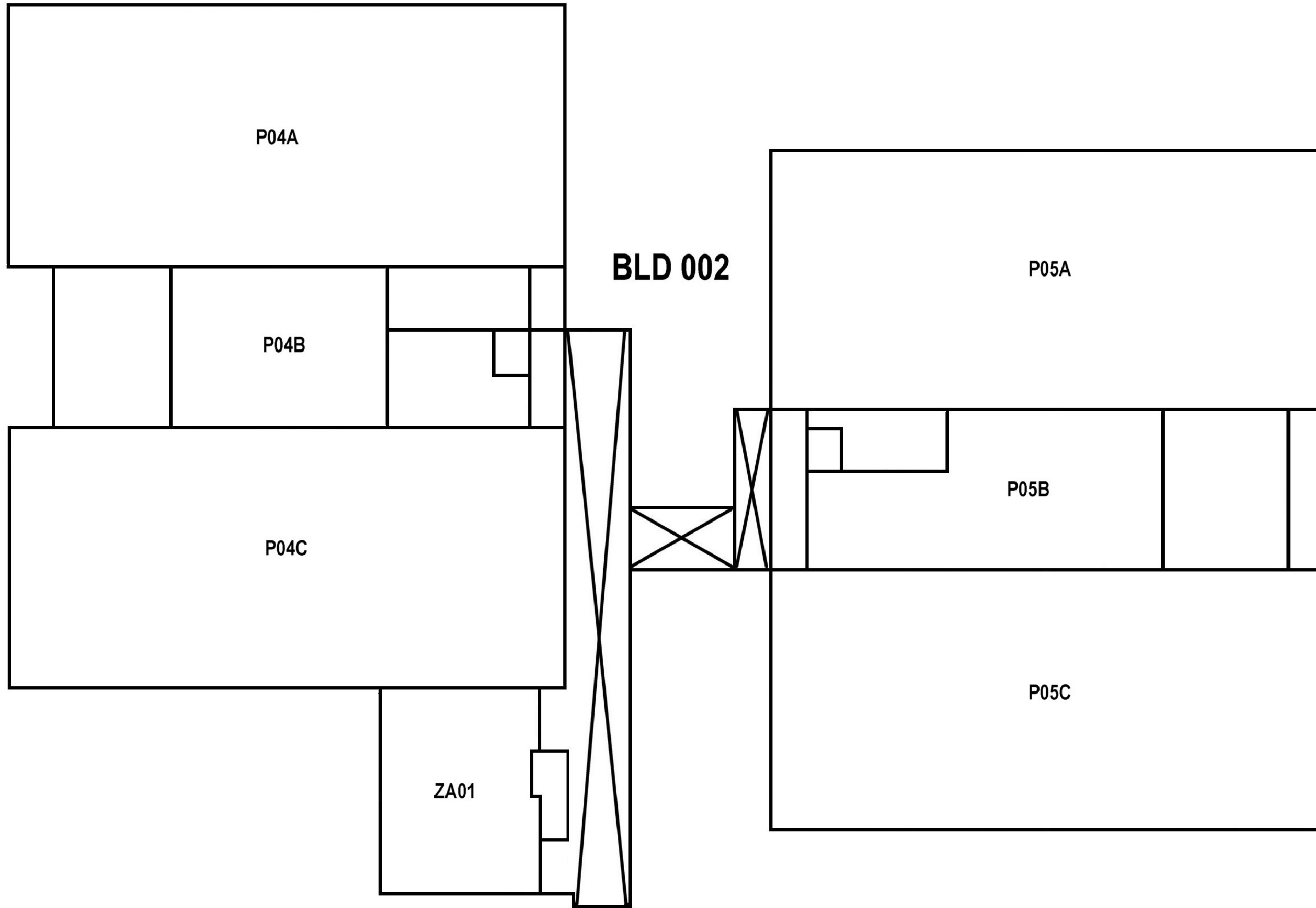
NORTH



DAVID LUBIN

DRAWING NO.	3
SPACE	
FLOOR	1ST

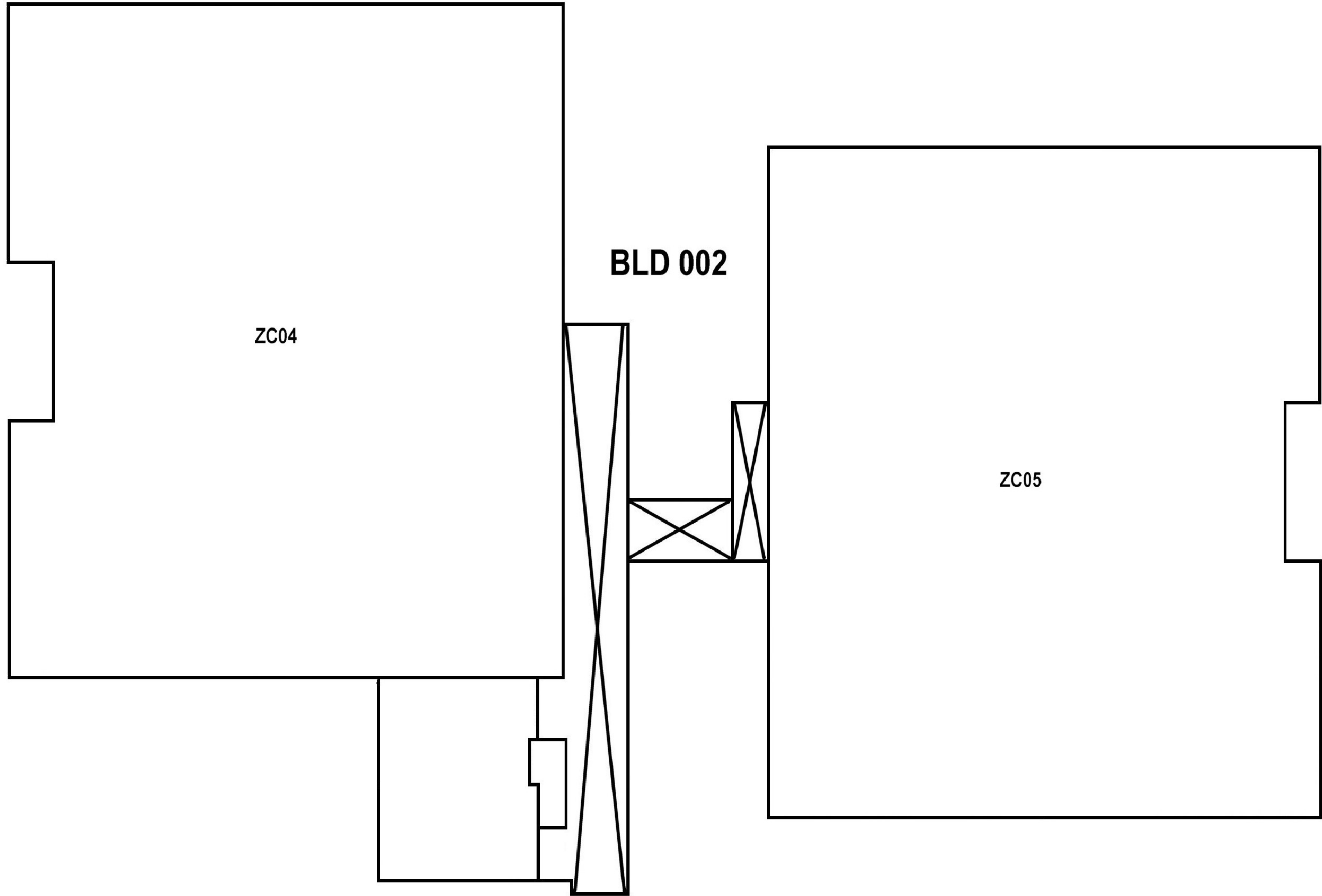




NORTH

DAVID LUBIN

DRAWING NO.	3A
SPACE	PLENUM & ATTIC
FLOOR	1ST



NORTH

**DAVID LUBIN**

DRAWING NO.	3B
SPACE	CRAWL
FLOOR	1ST



**SACRAMENTO CITY UNIFIED SCHOOL DISTRICT - AHERA 3 YEAR SUSPECT MATERIAL REPORT**

**DATE PRINTED: 6/29/2011**

**Page 1 of 25**

<b>SITE: 059</b>		<b>DAVID LUBIN</b>			<b>Address: 3535 M STREET, Sacramento 95816</b>				
<b>Building No:</b>	<b>001</b>	<b>Room</b>	<b>C001</b>	<b>Description</b>	<b>Office</b>		<b>Drawing No:</b>	<b>1</b>	
<b>Location</b>	<b>Homogeneous Material</b>	<b>Class</b>	<b>Friable</b>	<b>Material Size</b>	<b>Type of Asbestos</b>	<b>Sample Type</b>	<b>% Asbestos</b>	<b>Sample #</b>	
Ceiling	Acoustical Tile, Lay In	M	N	0 SF	Non ASB	Sampled	0	005H00	
Wall	Sheet Rock	M	N	0 SF	Non ASB	Sampled	0	002H02	

<b>Building No:</b>	<b>001</b>	<b>Room</b>	<b>C003</b>	<b>Description</b>	<b>Office</b>		<b>Drawing No:</b>	<b>1</b>	
<b>Location</b>	<b>Homogeneous Material</b>	<b>Class</b>	<b>Friable</b>	<b>Material Size</b>	<b>Type of Asbestos</b>	<b>Sample Type</b>	<b>% Asbestos</b>	<b>Sample #</b>	
Ceiling	Acoustical Tile, Lay In	M	N	0 SF	Non ASB	Sampled	0	005H00	
Flooring	Tile 12 In.	M	N	760 SF	Serp	Sampled	5	E8063 Under new floor.	
Wall	Sheet Rock	M	N	0 SF	Non ASB	Sampled	0	002H02	

<b>Building No:</b>	<b>001</b>	<b>Room</b>	<b>F001</b>	<b>Description</b>	<b>Foyer</b>		<b>Drawing No:</b>	<b>1</b>	
<b>Location</b>	<b>Homogeneous Material</b>	<b>Class</b>	<b>Friable</b>	<b>Material Size</b>	<b>Type of Asbestos</b>	<b>Sample Type</b>	<b>% Asbestos</b>	<b>Sample #</b>	
Ceiling	Sheet Rock	M	N	0 SF	Non ASB	Sampled	0	002H01	
Flooring	Tile 12 In.	M	N	600 SF	Serp	Sampled	5	E8064 Under new floor.	
Wall	Sheet Rock	M	N	0 SF	Non ASB	Sampled	0	002H01	

<b>Building No:</b>	<b>001</b>	<b>Room</b>	<b>F002</b>	<b>Description</b>	<b>Foyer</b>		<b>Drawing No:</b>	<b>1</b>	
<b>Location</b>	<b>Homogeneous Material</b>	<b>Class</b>	<b>Friable</b>	<b>Material Size</b>	<b>Type of Asbestos</b>	<b>Sample Type</b>	<b>% Asbestos</b>	<b>Sample #</b>	
Ceiling	Sheet Rock	M	N	0 SF	Non ASB	Sampled	0	002H07	
Flooring	Tile 12 In.	M	N	600 SF	Serp	Sampled	5	E8064 Under new floor.	
Wall	Sheet Rock	M	N	0 SF	Non ASB	Sampled	0	002H06	

<b>Building No:</b>	<b>001</b>	<b>Room</b>	<b>F003</b>	<b>Description</b>	<b>Foyer</b>		<b>Drawing No:</b>	<b>1</b>	
<b>Location</b>	<b>Homogeneous Material</b>	<b>Class</b>	<b>Friable</b>	<b>Material Size</b>	<b>Type of Asbestos</b>	<b>Sample Type</b>	<b>% Asbestos</b>	<b>Sample #</b>	
Ceiling	Sheet Rock	M	N	0 SF	Non ASB	Sampled	0	002H07	
Flooring	Tile 12 In.	M	N	600 SF	Serp	Sampled	5	E8063 Under new floor.	
Wall	Sheet Rock	M	N	0 SF	Non ASB	Sampled	0	002H07	

**SACRAMENTO CITY UNIFIED SCHOOL DISTRICT - AHERA 3 YEAR SUSPECT MATERIAL REPORT**

**DATE PRINTED: 6/29/2011**

**Page 2 of 25**

<b>SITE: 059</b>		<b>DAVID LUBIN</b>				<b>Address: 3535 M STREET, Sacramento 95816</b>				
<b>Building No:</b>	<b>001</b>	<b>Room</b>	<b>H009</b>	<b>Description</b>	<b>Hallway/Stairs</b>		<b>Drawing No:</b>	<b>1</b>		
<b>Location</b>	<b>Homogeneous Material</b>	<b>Class</b>	<b>Friable</b>	<b>Material Size</b>		<b>Type of Asbestos</b>	<b>Sample Type</b>	<b>% Asbestos</b>	<b>Sample #</b>	
Ceiling	Sheet Rock	M	N	0	SF	Non ASB	Sampled	0	002H04	
Flooring	Tile 12 In.	M	N	230	SF	Serp	Sampled	5	E8063	Under new floor.
Wall	Sheet Rock	M	N	0	SF	Non ASB	Sampled	0	002H04	

<b>Building No:</b>	<b>001</b>	<b>Room</b>	<b>I001</b>	<b>Description</b>	<b>Lounge</b>		<b>Drawing No:</b>	<b>1</b>		
<b>Location</b>	<b>Homogeneous Material</b>	<b>Class</b>	<b>Friable</b>	<b>Material Size</b>		<b>Type of Asbestos</b>	<b>Sample Type</b>	<b>% Asbestos</b>	<b>Sample #</b>	
Ceiling	Acoustical Tile, Lay In	M	N	0	SF	Non ASB	Sampled	0	005H01	
Flooring	Tile 12 In.	M	N	420	SF	Serp	Sampled	5	E8063	Under new floor.
Wall	Sheet Rock	M	N	0	SF	Non ASB	Sampled	0	002H05	

<b>Building No:</b>	<b>001</b>	<b>Room</b>	<b>J003</b>	<b>Description</b>	<b>Custodial Closet</b>		<b>Drawing No:</b>	<b>1</b>		
<b>Location</b>	<b>Homogeneous Material</b>	<b>Class</b>	<b>Friable</b>	<b>Material Size</b>		<b>Type of Asbestos</b>	<b>Sample Type</b>	<b>% Asbestos</b>	<b>Sample #</b>	
Ceiling	Sheet Rock	M	N	0	SF	Non ASB	Sampled	0	002H08	
Piping	Dom. Hot Water Insulation	T	N	1	LF	Other	Assumed	N/A		
Wall	Sheet Rock	M	N	0	SF	Non ASB	Sampled	0	002H08	

<b>Building No:</b>	<b>001</b>	<b>Room</b>	<b>K001</b>	<b>Description</b>	<b>Kitchen</b>		<b>Drawing No:</b>	<b>1</b>		
<b>Location</b>	<b>Homogeneous Material</b>	<b>Class</b>	<b>Friable</b>	<b>Material Size</b>		<b>Type of Asbestos</b>	<b>Sample Type</b>	<b>% Asbestos</b>	<b>Sample #</b>	
Ceiling	Acoustical Tile	M	N	0	SF	Non ASB	Sampled	0	006H00	
Ceiling	Sheet Rock	M	N	0	SF	Non ASB	Sampled	0	002H05	
HVAC	Flex Joint	M	N	4	SF	Other	Assumed	N/A		
Wall	Sheet Rock	M	N	0	SF	Non ASB	Sampled	0	002H05	

<b>Building No:</b>	<b>001</b>	<b>Room</b>	<b>M001</b>	<b>Description</b>	<b>Mechanical Room</b>		<b>Drawing No:</b>	<b>1</b>		
<b>Location</b>	<b>Homogeneous Material</b>	<b>Class</b>	<b>Friable</b>	<b>Material Size</b>		<b>Type of Asbestos</b>	<b>Sample Type</b>	<b>% Asbestos</b>	<b>Sample #</b>	
Ceiling	Sheet Rock	M	N	0	SF	Non ASB	Sampled	0	003H01	
HVAC	Duct Seal	M	N	0	SF	Non ASB	Sampled	0	004H00	
Piping	Dom. Hot Water Insulation	T	N	2	LF	Other	Assumed	N/A		
Wall	Sheet Rock	M	N	0	SF	Non ASB	Sampled	0	002H05	

**SACRAMENTO CITY UNIFIED SCHOOL DISTRICT - AHERA 3 YEAR SUSPECT MATERIAL REPORT**

**DATE PRINTED: 6/29/2011**

**Page 3 of 25**

<b>SITE: 059</b>		<b>DAVID LUBIN</b>			<b>Address: 3535 M STREET, Sacramento 95816</b>				
<b>Building No:</b>	<b>001</b>	<b>Room</b>	<b>M002</b>	<b>Description</b>	<b>Mechanical Room</b>		<b>Drawing No:</b>	<b>1</b>	
<b>Location</b>	<b>Homogeneous Material</b>	<b>Class</b>	<b>Friable</b>	<b>Material Size</b>		<b>Type of Asbestos</b>	<b>Sample Type</b>	<b>% Asbestos</b>	<b>Sample #</b>
Ceiling	Sheet Rock	M	N	0	SF	Non ASB	Sampled	0	003H01
HVAC	Duct Seal	M	N	0	SF	Non ASB	Sampled	0	004H00
Wall	Sheet Rock	M	N	0	SF	Non ASB	Sampled	0	002H01

<b>Building No:</b>	<b>001</b>	<b>Room</b>	<b>M003</b>	<b>Description</b>	<b>Mechanical Room</b>		<b>Drawing No:</b>	<b>1</b>	
<b>Location</b>	<b>Homogeneous Material</b>	<b>Class</b>	<b>Friable</b>	<b>Material Size</b>		<b>Type of Asbestos</b>	<b>Sample Type</b>	<b>% Asbestos</b>	<b>Sample #</b>
Ceiling	Sheet Rock	M	N	0	SF	Non ASB	Sampled	0	003H03
HVAC	Duct Seal	M	N	0	SF	Non ASB	Sampled	0	004B00
Wall	Fire Rated Door	M	N	21	SF	Other	Assumed	N/A	
Wall	Sheet Rock	M	N	0	SF	Non ASB	Sampled	0	002B00

<b>Building No:</b>	<b>001</b>	<b>Room</b>	<b>M008</b>	<b>Description</b>	<b>Mechanical Room</b>		<b>Drawing No:</b>	<b>1</b>	
<b>Location</b>	<b>Homogeneous Material</b>	<b>Class</b>	<b>Friable</b>	<b>Material Size</b>		<b>Type of Asbestos</b>	<b>Sample Type</b>	<b>% Asbestos</b>	<b>Sample #</b>
Ceiling	Sheet Rock	M	N	0	SF	Non ASB	Sampled	0	002H03
HVAC	Duct Seal	M	N	0	SF	Non ASB	Sampled	0	004B00
Wall	Sheet Rock	M	N	0	SF	Non ASB	Sampled	0	002H03

<b>Building No:</b>	<b>001</b>	<b>Room</b>	<b>M00I</b>	<b>Description</b>	<b>Mechanical Room</b>		<b>Drawing No:</b>	<b>1</b>	
<b>Location</b>	<b>Homogeneous Material</b>	<b>Class</b>	<b>Friable</b>	<b>Material Size</b>		<b>Type of Asbestos</b>	<b>Sample Type</b>	<b>% Asbestos</b>	<b>Sample #</b>
Ceiling	Sheet Rock	M	N	0	SF	Non ASB	Sampled	0	002H01
HVAC	Duct Seal	M	N	0	SF	Non ASB	Sampled	0	004H00
Wall	Sheet Rock	M	N	0	SF	Non ASB	Sampled	0	003H01

<b>Building No:</b>	<b>001</b>	<b>Room</b>	<b>M00X</b>	<b>Description</b>	<b>Mechanical Room</b>		<b>Drawing No:</b>	<b>1</b>	
<b>Location</b>	<b>Homogeneous Material</b>	<b>Class</b>	<b>Friable</b>	<b>Material Size</b>		<b>Type of Asbestos</b>	<b>Sample Type</b>	<b>% Asbestos</b>	<b>Sample #</b>
Ceiling	Sheet Rock	M	N	0	SF	Non ASB	Sampled	0	003H00
HVAC	Duct Seal	M	N	0	SF	Non ASB	Sampled	0	004H00
Wall	Sheet Rock	M	N	0	SF	Non ASB	Sampled	0	003H00

**SACRAMENTO CITY UNIFIED SCHOOL DISTRICT - AHERA 3 YEAR SUSPECT MATERIAL REPORT**

**DATE PRINTED: 6/29/2011**

<b>SITE: 059</b>	<b>DAVID LUBIN</b>				<b>Address: 3535 M STREET, Sacramento 95816</b>					
<b>Building No:</b> 001	<b>Room</b> M01A	<b>Description</b>	<b>Mechanical Room</b>		<b>Drawing No:</b> 1					
<b>Location</b>	<b>Homogeneous Material</b>	<b>Class</b>	<b>Friable</b>	<b>Material Size</b>	<b>Type of Asbestos</b>	<b>Sample Type</b>	<b>% Asbestos</b>	<b>Sample #</b>		
Ceiling	Sheet Rock	M	N	0 SF	Non ASB	Sampled	0	003H00		
HVAC	Duct Seal	M	N	0 SF	Non ASB	Sampled	0	004H00		
Wall	Sheet Rock	M	N	0 SF	Non ASB	Sampled	0	003H00		

<b>Building No:</b> 001	<b>Room</b> M01B	<b>Description</b>	<b>Mechanical Room</b>		<b>Drawing No:</b> 1					
<b>Location</b>	<b>Homogeneous Material</b>	<b>Class</b>	<b>Friable</b>	<b>Material Size</b>	<b>Type of Asbestos</b>	<b>Sample Type</b>	<b>% Asbestos</b>	<b>Sample #</b>		
Ceiling	Sheet Rock	M	N	0 SF	Non ASB	Sampled	0	003H00		
HVAC	Duct Seal	M	N	0 SF	Non ASB	Sampled	0	004H00		
Wall	Sheet Rock	M	N	0 SF	Non ASB	Sampled	0	003H00		

<b>Building No:</b> 001	<b>Room</b> M01C	<b>Description</b>	<b>Mechanical Room</b>		<b>Drawing No:</b> 1					
<b>Location</b>	<b>Homogeneous Material</b>	<b>Class</b>	<b>Friable</b>	<b>Material Size</b>	<b>Type of Asbestos</b>	<b>Sample Type</b>	<b>% Asbestos</b>	<b>Sample #</b>		
Ceiling	Sheet Rock	M	N	0 SF	Non ASB	Sampled	0	003H00		
HVAC	Duct Seal	M	N	0 SF	Non ASB	Sampled	0	004H00		
Wall	Sheet Rock	M	N	0 SF	Non ASB	Sampled	0	003H00		

<b>Building No:</b> 001	<b>Room</b> M01D	<b>Description</b>	<b>Mechanical Room</b>		<b>Drawing No:</b> 1					
<b>Location</b>	<b>Homogeneous Material</b>	<b>Class</b>	<b>Friable</b>	<b>Material Size</b>	<b>Type of Asbestos</b>	<b>Sample Type</b>	<b>% Asbestos</b>	<b>Sample #</b>		
Ceiling	Sheet Rock	M	N	0 SF	Non ASB	Sampled	0	003H00		
Wall	Sheet Rock	M	N	0 SF	Non ASB	Sampled	0	003H00		

<b>Building No:</b> 001	<b>Room</b> M02A	<b>Description</b>	<b>Mechanical Room</b>		<b>Drawing No:</b> 1					
<b>Location</b>	<b>Homogeneous Material</b>	<b>Class</b>	<b>Friable</b>	<b>Material Size</b>	<b>Type of Asbestos</b>	<b>Sample Type</b>	<b>% Asbestos</b>	<b>Sample #</b>		
Ceiling	Sheet Rock	M	N	0 SF	Non ASB	Sampled	0	003H01		
HVAC	Duct Seal	M	N	0 SF	Non ASB	Sampled	0	004H00		
Wall	Sheet Rock	M	N	0 SF	Non ASB	Sampled	0	003H00		

**SACRAMENTO CITY UNIFIED SCHOOL DISTRICT - AHERA 3 YEAR SUSPECT MATERIAL REPORT**

**DATE PRINTED: 6/29/2011**

<b>SITE: 059</b>		<b>DAVID LUBIN</b>				<b>Address: 3535 M STREET, Sacramento 95816</b>				
<b>Building No:</b>	<b>001</b>	<b>Room</b>	<b>M02B</b>	<b>Description</b>	<b>Mechanical Room</b>		<b>Drawing No:</b>	<b>1</b>		
<b>Location</b>	<b>Homogeneous Material</b>	<b>Class</b>	<b>Friable</b>	<b>Material Size</b>	<b>Type of Asbestos</b>	<b>Sample Type</b>	<b>% Asbestos</b>	<b>Sample #</b>		
Ceiling	Sheet Rock	M	N	0 SF	Non ASB	Sampled	0	003H01		
HVAC	Duct Seal	M	N	0 SF	Non ASB	Sampled	0	004B00		
Wall	Sheet Rock	M	N	0 SF	Non ASB	Sampled	0	003H01		

<b>Building No:</b>	<b>001</b>	<b>Room</b>	<b>M02C</b>	<b>Description</b>	<b>Mechanical Room</b>		<b>Drawing No:</b>	<b>1</b>		
<b>Location</b>	<b>Homogeneous Material</b>	<b>Class</b>	<b>Friable</b>	<b>Material Size</b>	<b>Type of Asbestos</b>	<b>Sample Type</b>	<b>% Asbestos</b>	<b>Sample #</b>		
Ceiling	Sheet Rock	M	N	0 SF	Non ASB	Sampled	0	003H02		
HVAC	Duct Seal	M	N	0 SF	Non ASB	Sampled	0	004H01		
Wall	Sheet Rock	M	N	0 SF	Non ASB	Sampled	0	003H02		

<b>Building No:</b>	<b>001</b>	<b>Room</b>	<b>M02D</b>	<b>Description</b>	<b>Mechanical Room</b>		<b>Drawing No:</b>	<b>1</b>		
<b>Location</b>	<b>Homogeneous Material</b>	<b>Class</b>	<b>Friable</b>	<b>Material Size</b>	<b>Type of Asbestos</b>	<b>Sample Type</b>	<b>% Asbestos</b>	<b>Sample #</b>		
Ceiling	Sheet Rock	M	N	0 SF	Non ASB	Sampled	0	003H02		
HVAC	Duct Seal	M	N	0 SF	Non ASB	Sampled	0	004H01		
Wall	Sheet Rock	M	N	0 SF	Non ASB	Sampled	0	003B00		

<b>Building No:</b>	<b>001</b>	<b>Room</b>	<b>M03A</b>	<b>Description</b>	<b>Mechanical Room</b>		<b>Drawing No:</b>	<b>1</b>		
<b>Location</b>	<b>Homogeneous Material</b>	<b>Class</b>	<b>Friable</b>	<b>Material Size</b>	<b>Type of Asbestos</b>	<b>Sample Type</b>	<b>% Asbestos</b>	<b>Sample #</b>		
Ceiling	Sheet Rock	M	N	0 SF	Non ASB	Sampled	0	003H02		
HVAC	Duct Seal	M	N	0 SF	Non ASB	Sampled	0	004H01		
Wall	Sheet Rock	M	N	0 SF	Non ASB	Sampled	0	003H02		

<b>Building No:</b>	<b>001</b>	<b>Room</b>	<b>M03B</b>	<b>Description</b>	<b>Mechanical Room</b>		<b>Drawing No:</b>	<b>1</b>		
<b>Location</b>	<b>Homogeneous Material</b>	<b>Class</b>	<b>Friable</b>	<b>Material Size</b>	<b>Type of Asbestos</b>	<b>Sample Type</b>	<b>% Asbestos</b>	<b>Sample #</b>		
Ceiling	Sheet Rock	M	N	0 SF	Non ASB	Sampled	0	003H02		
HVAC	Duct Seal	M	N	0 SF	Non ASB	Sampled	0	004H01		
Wall	Sheet Rock	M	N	0 SF	Non ASB	Sampled	0	003H02		

**SACRAMENTO CITY UNIFIED SCHOOL DISTRICT - AHERA 3 YEAR SUSPECT MATERIAL REPORT**

**DATE PRINTED: 6/29/2011**

<b>SITE: 059</b>		<b>DAVID LUBIN</b>			<b>Address: 3535 M STREET, Sacramento 95816</b>					
<b>Building No:</b>	<b>001</b>	<b>Room</b>	<b>M03C</b>	<b>Description</b>	<b>Mechanical Room</b>		<b>Drawing No:</b>	<b>1</b>		
<b>Location</b>	<b>Homogeneous Material</b>	<b>Class</b>	<b>Friable</b>	<b>Material Size</b>		<b>Type of Asbestos</b>	<b>Sample Type</b>	<b>% Asbestos</b>	<b>Sample #</b>	
Ceiling	Sheet Rock	M	N	0	SF	Non ASB	Sampled	0	003H02	
HVAC	Duct Seal	M	N	0	SF	Non ASB	Sampled	0	004H01	
Wall	Sheet Rock	M	N	0	SF	Non ASB	Sampled	0	003H02	

<b>Building No:</b>	<b>001</b>	<b>Room</b>	<b>M03D</b>	<b>Description</b>	<b>Mechanical Room</b>		<b>Drawing No:</b>	<b>1</b>		
<b>Location</b>	<b>Homogeneous Material</b>	<b>Class</b>	<b>Friable</b>	<b>Material Size</b>		<b>Type of Asbestos</b>	<b>Sample Type</b>	<b>% Asbestos</b>	<b>Sample #</b>	
Ceiling	Sheet Rock	M	N	0	SF	Non ASB	Sampled	0	003H02	
HVAC	Duct Seal	M	N	0	SF	Non ASB	Sampled	0	004H01	
Wall	Sheet Rock	M	N	0	SF	Non ASB	Sampled	0	003H02	

<b>Building No:</b>	<b>001</b>	<b>Room</b>	<b>O01A</b>	<b>Description</b>	<b>Classroom</b>		<b>Drawing No:</b>	<b>1</b>		
<b>Location</b>	<b>Homogeneous Material</b>	<b>Class</b>	<b>Friable</b>	<b>Material Size</b>		<b>Type of Asbestos</b>	<b>Sample Type</b>	<b>% Asbestos</b>	<b>Sample #</b>	
Ceiling	Acoustical Tile, Lay In	M	N	0	SF	Non ASB	Sampled	0	005B00	
Flooring	Tile 12 In.	M	N	1000	SF	Serp	Sampled	5	E8064	Under new floor.
Wall	Sheet Rock	M	N	0	SF	Non ASB	Sampled	0	002H00	

<b>Building No:</b>	<b>001</b>	<b>Room</b>	<b>O01B</b>	<b>Description</b>	<b>Classroom</b>		<b>Drawing No:</b>	<b>1</b>		
<b>Location</b>	<b>Homogeneous Material</b>	<b>Class</b>	<b>Friable</b>	<b>Material Size</b>		<b>Type of Asbestos</b>	<b>Sample Type</b>	<b>% Asbestos</b>	<b>Sample #</b>	
Ceiling	Acoustical Tile, Lay In	M	N	0	SF	Non ASB	Sampled	0	005H00	
Flooring	Tile 12 In.	M	N	1000	SF	Serp	Sampled	5	E8064	Under new floor.
Wall	Sheet Rock	M	N	0	SF	Non ASB	Sampled	0	002H00	

<b>Building No:</b>	<b>001</b>	<b>Room</b>	<b>O01C</b>	<b>Description</b>	<b>Classroom</b>		<b>Drawing No:</b>	<b>1</b>		
<b>Location</b>	<b>Homogeneous Material</b>	<b>Class</b>	<b>Friable</b>	<b>Material Size</b>		<b>Type of Asbestos</b>	<b>Sample Type</b>	<b>% Asbestos</b>	<b>Sample #</b>	
Ceiling	Acoustical Tile, Lay In	M	N	0	SF	Non ASB	Sampled	0	005H00	
Flooring	Tile 12 In.	M	N	1000	SF	Serp	Sampled	5	E8064	Under new floor.
Wall	Sheet Rock	M	N	0	SF	Non ASB	Sampled	0	002H00	



**SACRAMENTO CITY UNIFIED SCHOOL DISTRICT - AHERA 3 YEAR SUSPECT MATERIAL REPORT**

**DATE PRINTED: 6/29/2011**

<b>SITE: 059</b>		<b>DAVID LUBIN</b>				<b>Address: 3535 M STREET, Sacramento 95816</b>				
<b>Building No:</b>	<b>001</b>	<b>Room</b>	<b>O01D</b>	<b>Description</b>	<b>Classroom</b>		<b>Drawing No:</b>	<b>1</b>		
<b>Location</b>	<b>Homogeneous Material</b>	<b>Class</b>	<b>Friable</b>	<b>Material Size</b>		<b>Type of Asbestos</b>	<b>Sample Type</b>	<b>% Asbestos</b>	<b>Sample #</b>	
Ceiling	Acoustical Tile, Lay In	M	N	0	SF	Non ASB	Sampled	0	005H00	
Flooring	Tile 12 In.	M	N	1000	SF	Serp	Sampled	5	E8064	Under new floor.
Wall	Sheet Rock	M	N	0	SF	Non ASB	Sampled	0	002H00	

<b>Building No:</b>	<b>001</b>	<b>Room</b>	<b>O02A</b>	<b>Description</b>	<b>Classroom</b>		<b>Drawing No:</b>	<b>1</b>		
<b>Location</b>	<b>Homogeneous Material</b>	<b>Class</b>	<b>Friable</b>	<b>Material Size</b>		<b>Type of Asbestos</b>	<b>Sample Type</b>	<b>% Asbestos</b>	<b>Sample #</b>	
Ceiling	Acoustical Tile, Lay In	M	N	0	SF	Non ASB	Sampled	0	005H01	
Flooring	Tile 12 In.	M	N	1000	SF	Serp	Sampled	5	E8064	Under new floor.
Wall	Sheet Rock	M	N	0	SF	Non ASB	Sampled	0	002H00	

<b>Building No:</b>	<b>001</b>	<b>Room</b>	<b>O02B</b>	<b>Description</b>	<b>Classroom</b>		<b>Drawing No:</b>	<b>1</b>		
<b>Location</b>	<b>Homogeneous Material</b>	<b>Class</b>	<b>Friable</b>	<b>Material Size</b>		<b>Type of Asbestos</b>	<b>Sample Type</b>	<b>% Asbestos</b>	<b>Sample #</b>	
Ceiling	Acoustical Tile, Lay In	M	N	0	SF	Non ASB	Sampled	0	005H01	
Flooring	Tile 12 In.	M	N	1000	SF	Serp	Sampled	5	E8064	Under new floor.
Wall	Sheet Rock	M	N	0	SF	Non ASB	Sampled	0	002H06	

<b>Building No:</b>	<b>001</b>	<b>Room</b>	<b>O02C</b>	<b>Description</b>	<b>Classroom</b>		<b>Drawing No:</b>	<b>1</b>		
<b>Location</b>	<b>Homogeneous Material</b>	<b>Class</b>	<b>Friable</b>	<b>Material Size</b>		<b>Type of Asbestos</b>	<b>Sample Type</b>	<b>% Asbestos</b>	<b>Sample #</b>	
Ceiling	Acoustical Tile, Lay In	M	N	0	SF	Non ASB	Sampled	0	005H01	
Flooring	Tile 12 In.	M	N	1000	SF	Serp	Sampled	5	E8064	Under new floor.
Wall	Sheet Rock	M	N	0	SF	Non ASB	Sampled	0	002H06	

<b>Building No:</b>	<b>001</b>	<b>Room</b>	<b>O02D</b>	<b>Description</b>	<b>Classroom</b>		<b>Drawing No:</b>	<b>1</b>		
<b>Location</b>	<b>Homogeneous Material</b>	<b>Class</b>	<b>Friable</b>	<b>Material Size</b>		<b>Type of Asbestos</b>	<b>Sample Type</b>	<b>% Asbestos</b>	<b>Sample #</b>	
Ceiling	Acoustical Tile, Lay In	M	N	0	SF	Non ASB	Sampled	0	005B00	
Flooring	Tile 12 In.	M	N	1000	SF	Serp	Sampled	5	E8064	Under new floor.
Wall	Sheet Rock	M	N	0	SF	Non ASB	Sampled	0	002H06	

**SACRAMENTO CITY UNIFIED SCHOOL DISTRICT - AHERA 3 YEAR SUSPECT MATERIAL REPORT**

**DATE PRINTED: 6/29/2011**

<b>SITE: 059</b>		<b>DAVID LUBIN</b>				<b>Address: 3535 M STREET, Sacramento 95816</b>				
<b>Building No:</b>	<b>001</b>	<b>Room</b>	<b>O03A</b>	<b>Description</b>	<b>Classroom</b>		<b>Drawing No:</b>	<b>1</b>		
<b>Location</b>	<b>Homogeneous Material</b>	<b>Class</b>	<b>Friable</b>	<b>Material Size</b>	<b>Type of Asbestos</b>	<b>Sample Type</b>	<b>% Asbestos</b>	<b>Sample #</b>		
Ceiling	Acoustical Tile, Lay In	M	N	0 SF	Non ASB	Sampled	0	005H01		
Flooring	Tile 12 In.	M	N	1000 SF	Serp	Sampled	5	E8064	Under new floor.	
Wall	Sheet Rock	M	N	0 SF	Non ASB	Sampled	0	002H06		

<b>Building No:</b>	<b>001</b>	<b>Room</b>	<b>O03B</b>	<b>Description</b>	<b>Classroom</b>		<b>Drawing No:</b>	<b>1</b>		
<b>Location</b>	<b>Homogeneous Material</b>	<b>Class</b>	<b>Friable</b>	<b>Material Size</b>	<b>Type of Asbestos</b>	<b>Sample Type</b>	<b>% Asbestos</b>	<b>Sample #</b>		
Ceiling	Acoustical Tile, Lay In	M	N	0 SF	Non ASB	Sampled	0	005H01		
Flooring	Tile 12 In.	M	N	1000 SF	Serp	Sampled	5	E8064	Under new floor.	
Wall	Sheet Rock	M	N	0 SF	Non ASB	Sampled	0	002H06		

<b>Building No:</b>	<b>001</b>	<b>Room</b>	<b>O03C</b>	<b>Description</b>	<b>Classroom</b>		<b>Drawing No:</b>	<b>1</b>		
<b>Location</b>	<b>Homogeneous Material</b>	<b>Class</b>	<b>Friable</b>	<b>Material Size</b>	<b>Type of Asbestos</b>	<b>Sample Type</b>	<b>% Asbestos</b>	<b>Sample #</b>		
Ceiling	Acoustical Tile, Lay In	M	N	0 SF	Non ASB	Sampled	0	005H01		
Flooring	Tile 12 In.	M	N	1000 SF	Serp	Sampled	5	E8064	Under new floor.	
Wall	Sheet Rock	M	N	0 SF	Non ASB	Sampled	0	002H06		

<b>Building No:</b>	<b>001</b>	<b>Room</b>	<b>O03D</b>	<b>Description</b>	<b>Classroom</b>		<b>Drawing No:</b>	<b>1</b>		
<b>Location</b>	<b>Homogeneous Material</b>	<b>Class</b>	<b>Friable</b>	<b>Material Size</b>	<b>Type of Asbestos</b>	<b>Sample Type</b>	<b>% Asbestos</b>	<b>Sample #</b>		
Ceiling	Acoustical Tile, Lay In	M	N	0 SF	Non ASB	Sampled	0	005H01		
Flooring	Tile 12 In.	M	N	1000 SF	Serp	Sampled	5	E8064	Under new floor.	
Wall	Sheet Rock	M	N	0 SF	Non ASB	Sampled	0	002H06		

<b>Building No:</b>	<b>001</b>	<b>Room</b>	<b>P002</b>	<b>Description</b>	<b>Plenum</b>		<b>Drawing No:</b>	<b>1A</b>		
<b>Location</b>	<b>Homogeneous Material</b>	<b>Class</b>	<b>Friable</b>	<b>Material Size</b>	<b>Type of Asbestos</b>	<b>Sample Type</b>	<b>% Asbestos</b>	<b>Sample #</b>		
Wall	Sheet Rock	M	N	0 SF	Non ASB	Sampled	0	002H08		

<b>Building No:</b>	<b>001</b>	<b>Room</b>	<b>P003</b>	<b>Description</b>	<b>Plenum</b>		<b>Drawing No:</b>	<b>1A</b>		
<b>Location</b>	<b>Homogeneous Material</b>	<b>Class</b>	<b>Friable</b>	<b>Material Size</b>	<b>Type of Asbestos</b>	<b>Sample Type</b>	<b>% Asbestos</b>	<b>Sample #</b>		
Wall	Sheet Rock	M	N	0 SF	Non ASB	Sampled	0	002H08		

**SACRAMENTO CITY UNIFIED SCHOOL DISTRICT - AHERA 3 YEAR SUSPECT MATERIAL REPORT**

**DATE PRINTED: 6/29/2011**

**Page 9 of 25**

<b>SITE: 059</b>		<b>DAVID LUBIN</b>				<b>Address: 3535 M STREET, Sacramento 95816</b>				
<b>Building No:</b>	<b>001</b>	<b>Room</b>	<b>P00C</b>	<b>Description</b>	<b>Plenum</b>		<b>Drawing No:</b>	<b>1A</b>		
<b>Location</b>	<b>Homogeneous Material</b>	<b>Class</b>	<b>Friable</b>	<b>Material Size</b>	<b>Type of Asbestos</b>	<b>Sample Type</b>	<b>% Asbestos</b>	<b>Sample #</b>		
Ceiling	Sheet Rock	M	N	0 SF	Non ASB	Sampled	0	002H03		
Wall	Sheet Rock	M	N	0 SF	Non ASB	Sampled	0	002H03		

<b>Building No:</b>	<b>001</b>	<b>Room</b>	<b>P00H</b>	<b>Description</b>	<b>Plenum</b>		<b>Drawing No:</b>	<b>1A</b>		
<b>Location</b>	<b>Homogeneous Material</b>	<b>Class</b>	<b>Friable</b>	<b>Material Size</b>	<b>Type of Asbestos</b>	<b>Sample Type</b>	<b>% Asbestos</b>	<b>Sample #</b>		

<b>Building No:</b>	<b>001</b>	<b>Room</b>	<b>P00I</b>	<b>Description</b>	<b>Plenum</b>		<b>Drawing No:</b>	<b>1A</b>		
<b>Location</b>	<b>Homogeneous Material</b>	<b>Class</b>	<b>Friable</b>	<b>Material Size</b>	<b>Type of Asbestos</b>	<b>Sample Type</b>	<b>% Asbestos</b>	<b>Sample #</b>		
Wall	Sheet Rock	M	N	0 SF	Non ASB	Sampled	0	002H05		

<b>Building No:</b>	<b>001</b>	<b>Room</b>	<b>P00X</b>	<b>Description</b>	<b>Plenum</b>		<b>Drawing No:</b>	<b>1A</b>		
<b>Location</b>	<b>Homogeneous Material</b>	<b>Class</b>	<b>Friable</b>	<b>Material Size</b>	<b>Type of Asbestos</b>	<b>Sample Type</b>	<b>% Asbestos</b>	<b>Sample #</b>		
Ceiling	Sheet Rock	M	N	0 SF	Non ASB	Sampled	0	002H02		
Wall	Sheet Rock	M	N	0 SF	Non ASB	Sampled	0	002H01		

<b>Building No:</b>	<b>001</b>	<b>Room</b>	<b>P01B</b>	<b>Description</b>	<b>Plenum</b>		<b>Drawing No:</b>	<b>1</b>		
<b>Location</b>	<b>Homogeneous Material</b>	<b>Class</b>	<b>Friable</b>	<b>Material Size</b>	<b>Type of Asbestos</b>	<b>Sample Type</b>	<b>% Asbestos</b>	<b>Sample #</b>		
Wall	Sheet Rock	M	N	0 SF	Non ASB	Sampled	0	002H01		

<b>Building No:</b>	<b>001</b>	<b>Room</b>	<b>S002</b>	<b>Description</b>	<b>Storage</b>		<b>Drawing No:</b>	<b>1</b>		
<b>Location</b>	<b>Homogeneous Material</b>	<b>Class</b>	<b>Friable</b>	<b>Material Size</b>	<b>Type of Asbestos</b>	<b>Sample Type</b>	<b>% Asbestos</b>	<b>Sample #</b>		
Ceiling	Acoustical Tile, Lay In	M	N	0 SF	Non ASB	Sampled	0	005H01		
Wall	Sheet Rock	M	N	0 SF	Non ASB	Sampled	0	002H02		

<b>Building No:</b>	<b>001</b>	<b>Room</b>	<b>S006</b>	<b>Description</b>	<b>Storage</b>		<b>Drawing No:</b>	<b>1</b>		
<b>Location</b>	<b>Homogeneous Material</b>	<b>Class</b>	<b>Friable</b>	<b>Material Size</b>	<b>Type of Asbestos</b>	<b>Sample Type</b>	<b>% Asbestos</b>	<b>Sample #</b>		
Ceiling	Acoustical Tile, Lay In	M	N	0 SF	Non ASB	Sampled	0	005H00		
Wall	Sheet Rock	M	N	0 SF	Non ASB	Sampled	0	002H02		

**SACRAMENTO CITY UNIFIED SCHOOL DISTRICT - AHERA 3 YEAR SUSPECT MATERIAL REPORT**

**DATE PRINTED: 6/29/2011**

<b>SITE: 059</b>		<b>DAVID LUBIN</b>				<b>Address: 3535 M STREET, Sacramento 95816</b>				
<b>Building No:</b>	<b>001</b>	<b>Room</b>	<b>S007</b>	<b>Description</b>	<b>Storage</b>		<b>Drawing No:</b>	<b>1</b>		
<b>Location</b>	<b>Homogeneous Material</b>	<b>Class</b>	<b>Friable</b>	<b>Material Size</b>		<b>Type of Asbestos</b>	<b>Sample Type</b>	<b>% Asbestos</b>	<b>Sample #</b>	
Ceiling	Sheet Rock	M	N	0	SF	Non ASB	Sampled	0	002H03	
Flooring	Tile 12 In.	M	N	25	SF	Serp	Sampled	5	E8063	Under new floor.
Wall	Sheet Rock	M	N	0	SF	Non ASB	Sampled	0	002H02	

<b>Building No:</b>	<b>001</b>	<b>Room</b>	<b>S00K</b>	<b>Description</b>	<b>Storage</b>		<b>Drawing No:</b>	<b>1</b>		
<b>Location</b>	<b>Homogeneous Material</b>	<b>Class</b>	<b>Friable</b>	<b>Material Size</b>		<b>Type of Asbestos</b>	<b>Sample Type</b>	<b>% Asbestos</b>	<b>Sample #</b>	
Ceiling	Sheet Rock	M	N	0	SF	Non ASB	Sampled	0	002H05	
Flooring	Tile 12 In.	M	N	96	SF	Serp	Sampled	5	E8063	Under new floor.
Wall	Fire Rated Door	M	N	21	SF	Other	Assumed	N/A		
Wall	Sheet Rock	M	N	0	SF	Non ASB	Sampled	0	002H05	

<b>Building No:</b>	<b>001</b>	<b>Room</b>	<b>S01E</b>	<b>Description</b>	<b>Storage</b>		<b>Drawing No:</b>	<b>1</b>		
<b>Location</b>	<b>Homogeneous Material</b>	<b>Class</b>	<b>Friable</b>	<b>Material Size</b>		<b>Type of Asbestos</b>	<b>Sample Type</b>	<b>% Asbestos</b>	<b>Sample #</b>	
Ceiling	Acoustical Tile	M	N	0	SF	Non ASB	Sampled	0	002H05	
Ceiling	Sheet Rock	M	N	0	SF	Non ASB	Sampled	0	002H01	
Wall	Sheet Rock	M	N	0	SF	Non ASB	Sampled	0	002H01	

<b>Building No:</b>	<b>001</b>	<b>Room</b>	<b>S01F</b>	<b>Description</b>	<b>Storage</b>		<b>Drawing No:</b>	<b>1</b>		
<b>Location</b>	<b>Homogeneous Material</b>	<b>Class</b>	<b>Friable</b>	<b>Material Size</b>		<b>Type of Asbestos</b>	<b>Sample Type</b>	<b>% Asbestos</b>	<b>Sample #</b>	
Ceiling	Sheet Rock	M	N	0	SF	Non ASB	Sampled	0	002H01	
Wall	Fire Rated Door	M	N	21	SF	Other	Assumed	N/A		
Wall	Sheet Rock	M	N	0	SF	Non ASB	Sampled	0	002H01	

<b>Building No:</b>	<b>001</b>	<b>Room</b>	<b>S02A</b>	<b>Description</b>	<b>Storage</b>		<b>Drawing No:</b>	<b>1</b>		
<b>Location</b>	<b>Homogeneous Material</b>	<b>Class</b>	<b>Friable</b>	<b>Material Size</b>		<b>Type of Asbestos</b>	<b>Sample Type</b>	<b>% Asbestos</b>	<b>Sample #</b>	
Ceiling	Acoustical Tile	M	N	0	SF	Non ASB	Sampled	0	006H00	
Ceiling	Sheet Rock	M	N	0	SF	Non ASB	Sampled	0	002H07	
Wall	Acoustical Tile, Splined	M	N	56	SF	Non ASB	Sampled	0	R2194	
Wall	Sheet Rock	M	N	0	SF	Non ASB	Sampled	0	002H07	

**SACRAMENTO CITY UNIFIED SCHOOL DISTRICT - AHERA 3 YEAR SUSPECT MATERIAL REPORT**

DATE PRINTED: 6/29/2011

Page 11 of 25

SITE: 059		DAVID LUBIN			Address: 3535 M STREET, Sacramento 95816					
Building No:	001	Room	S02E	Description	Storage	Drawing No:	1			
Location	Homogeneous Material	Class	Friable	Material Size	Type of Asbestos	Sample Type	% Asbestos	Sample #		
Ceiling	Acoustical Tile	M	N	0 SF	Non ASB	Sampled	0	006H00		
Ceiling	Sheet Rock	M	N	0 SF	Non ASB	Sampled	0	002H07		
Wall	Sheet Rock	M	N	0 SF	Non ASB	Sampled	0	002B00		

Building No:		001		Room	S02F	Description	Storage	Drawing No:	1		
Location	Homogeneous Material	Class	Friable	Material Size	Type of Asbestos	Sample Type	% Asbestos	Sample #			
Ceiling	Acoustical Tile	M	N	0 SF	Non ASB	Sampled	0	006H00			
Ceiling	Sheet Rock	M	N	0 SF	Non ASB	Sampled	0	002H06			
Wall	Sheet Rock	M	N	0 SF	Non ASB	Sampled	0	002B00			

Building No:		001		Room	S03E	Description	Storage	Drawing No:	1		
Location	Homogeneous Material	Class	Friable	Material Size	Type of Asbestos	Sample Type	% Asbestos	Sample #			
Ceiling	Acoustical Tile	M	N	0 SF	Non ASB	Sampled	0	006H00			
Ceiling	Sheet Rock	M	N	0 SF	Non ASB	Sampled	0	002H07			
Wall	Sheet Rock	M	N	0 SF	Non ASB	Sampled	0	002H07			

Building No:		001		Room	S03F	Description	Storage	Drawing No:	1		
Location	Homogeneous Material	Class	Friable	Material Size	Type of Asbestos	Sample Type	% Asbestos	Sample #			
Ceiling	Sheet Rock	M	N	0 SF	Non ASB	Sampled	0	002H08			
Wall	Fire Rated Door	M	N	21 SF	Other	Assumed	N/A				
Wall	Sheet Rock	M	N	0 SF	Non ASB	Sampled	0	002H08			

Building No:		001		Room	S0U1	Description	Storage	Drawing No:	1		
Location	Homogeneous Material	Class	Friable	Material Size	Type of Asbestos	Sample Type	% Asbestos	Sample #			
Ceiling	Sheet Rock	M	N	60 SF	Non ASB	Sampled	0	002H04			
Flooring	Tile 12 In.	M	N	60 SF	Serp	Sampled	5	E8064	Under new floor.		
HVAC	Duct Seal	M	N	0 SF	Non ASB	Sampled	0	044B00			
Wall	Sheet Rock	M	N	0 SF	Non ASB	Sampled	0	002H04			

**SACRAMENTO CITY UNIFIED SCHOOL DISTRICT - AHERA 3 YEAR SUSPECT MATERIAL REPORT**

**DATE PRINTED: 6/29/2011**

**SITE: 059**      **DAVID LUBIN**      **Address: 3535 M STREET, Sacramento 95816**

**Building No: 001**    **Room T001**    **Description Toilet**    **Drawing No: 1**

Location	Homogeneous Material	Class	Friable	Material Size	Type of Asbestos	Sample Type	% Asbestos	Sample #
Ceiling	Sheet Rock	M	N	0 SF	Non ASB	Sampled	0	002H00
Wall	Sheet Rock	M	N	0 SF	Non ASB	Sampled	0	002H00

**Building No: 001**    **Room T002**    **Description Toilet**    **Drawing No: 1**

Location	Homogeneous Material	Class	Friable	Material Size	Type of Asbestos	Sample Type	% Asbestos	Sample #
Wall	Sheet Rock	M	N	0 SF	Non ASB	Sampled	0	002H00

**Building No: 001**    **Room T003**    **Description Toilet**    **Drawing No: 1**

Location	Homogeneous Material	Class	Friable	Material Size	Type of Asbestos	Sample Type	% Asbestos	Sample #
Ceiling	Sheet Rock	M	N	0 SF	Non ASB	Sampled	0	002H00
Wall	Sheet Rock	M	N	0 SF	Non ASB	Sampled	0	002H00

**Building No: 001**    **Room T004**    **Description Toilet**    **Drawing No: 1**

Location	Homogeneous Material	Class	Friable	Material Size	Type of Asbestos	Sample Type	% Asbestos	Sample #
Ceiling	Sheet Rock	M	N	0 SF	Non ASB	Sampled	0	002H02
Wall	Sheet Rock	M	N	0 SF	Non ASB	Sampled	0	002H00

**Building No: 001**    **Room T005**    **Description Toilet**    **Drawing No: 1**

Location	Homogeneous Material	Class	Friable	Material Size	Type of Asbestos	Sample Type	% Asbestos	Sample #
Ceiling	Sheet Rock	M	N	0 SF	Non ASB	Sampled	0	002H05
Wall	Sheet Rock	M	N	0 SF	Non ASB	Sampled	0	002H05

**Building No: 001**    **Room T006**    **Description Toilet**    **Drawing No: 1**

Location	Homogeneous Material	Class	Friable	Material Size	Type of Asbestos	Sample Type	% Asbestos	Sample #
Ceiling	Sheet Rock	M	N	0 SF	Non ASB	Sampled	0	002H05
Wall	Sheet Rock	M	N	0 SF	Non ASB	Sampled	0	002H05



**SACRAMENTO CITY UNIFIED SCHOOL DISTRICT - AHERA 3 YEAR SUSPECT MATERIAL REPORT**

**DATE PRINTED: 6/29/2011**

<b>SITE: 059</b>		<b>DAVID LUBIN</b>				<b>Address: 3535 M STREET, Sacramento 95816</b>					
<b>Building No:</b>	<b>001</b>	<b>Room</b>	<b>T007</b>	<b>Description</b>		<b>Toilet</b>		<b>Drawing No:</b>	<b>1</b>		
<b>Location</b>		<b>Homogeneous Material</b>		<b>Class</b>	<b>Friable</b>	<b>Material Size</b>		<b>Type of Asbestos</b>	<b>Sample Type</b>	<b>% Asbestos</b>	<b>Sample #</b>
Ceiling		Acoustical Tile		M	N	0 SF		Non ASB	Sampled	0	006H00
Ceiling		Sheet Rock		M	N	0 SF		Non ASB	Sampled	0	002H07
Wall		Sheet Rock		M	N	0 SF		Non ASB	Sampled	0	002H07

<b>Building No:</b>	<b>001</b>	<b>Room</b>	<b>T008</b>	<b>Description</b>		<b>Toilet</b>		<b>Drawing No:</b>	<b>1</b>		
<b>Location</b>		<b>Homogeneous Material</b>		<b>Class</b>	<b>Friable</b>	<b>Material Size</b>		<b>Type of Asbestos</b>	<b>Sample Type</b>	<b>% Asbestos</b>	<b>Sample #</b>
Ceiling		Acoustical Tile		M	N	0 SF		Non ASB	Sampled	0	006H00
Ceiling		Sheet Rock		M	N	0 SF		Non ASB	Sampled	0	002H07
Wall		Sheet Rock		M	N	0 SF		Non ASB	Sampled	0	002H08

<b>Building No:</b>	<b>001</b>	<b>Room</b>	<b>U001</b>	<b>Description</b>		<b>Multipurpose/Cafeteria</b>		<b>Drawing No:</b>	<b>1</b>		
<b>Location</b>		<b>Homogeneous Material</b>		<b>Class</b>	<b>Friable</b>	<b>Material Size</b>		<b>Type of Asbestos</b>	<b>Sample Type</b>	<b>% Asbestos</b>	<b>Sample #</b>
Ceiling		Acoustical Tile		M	N	3185 SF		Non ASB	Sampled	0	006B00
Ceiling		Sheet Rock		M	N	3185 SF		Non ASB	Sampled	0	002H05
Flooring		Mastic		M	N	SF		Non ASB	Sampled	0	J1100 Under wood floor.
Wall		Acoustical Tile, Splined		M	N	600 SF		Non ASB	Sampled	0	R2015
Wall		Sheet Rock		M	N	604 SF		Non ASB	Sampled	0	002H03

<b>Building No:</b>	<b>001</b>	<b>Room</b>	<b>X001</b>	<b>Description</b>		<b>Library</b>		<b>Drawing No:</b>	<b>1</b>		
<b>Location</b>		<b>Homogeneous Material</b>		<b>Class</b>	<b>Friable</b>	<b>Material Size</b>		<b>Type of Asbestos</b>	<b>Sample Type</b>	<b>% Asbestos</b>	<b>Sample #</b>
Ceiling		Acoustical Tile, Lay In		M	N	0 SF		Non ASB	Sampled	0	005H00
Ceiling		Sheet Rock		M	N	0 SF		Non ASB	Sampled	0	002H01
Wall		Sheet Rock		M	N	0 SF		Non ASB	Sampled	0	002H01

<b>Building No:</b>	<b>001</b>	<b>Room</b>	<b>Z001</b>	<b>Description</b>		<b>Misc. Room</b>		<b>Drawing No:</b>	<b>1</b>		
<b>Location</b>		<b>Homogeneous Material</b>		<b>Class</b>	<b>Friable</b>	<b>Material Size</b>		<b>Type of Asbestos</b>	<b>Sample Type</b>	<b>% Asbestos</b>	<b>Sample #</b>
Ceiling		Sheet Rock		M	N	0 SF		Non ASB	Sampled	0	002H03
Wall		Sheet Rock		M	N	0 SF		Non ASB	Sampled	0	002H03

**SACRAMENTO CITY UNIFIED SCHOOL DISTRICT - AHERA 3 YEAR SUSPECT MATERIAL REPORT**

**DATE PRINTED: 6/29/2011**

**SITE: 059**      **DAVID LUBIN**      **Address: 3535 M STREET, Sacramento 95816**

**Building No: 001**    **Room Z005**    **Description**    **Misc. Room**    **Drawing No: 1**

Location	Homogeneous Material	Class	Friable	Material Size	Type of Asbestos	Sample Type	% Asbestos	Sample #
Ceiling	Acoustical Tile, Lay In	M	N	0 SF	Non ASB	Sampled	0	005H00
Wall	Sheet Rock	M	N	0 SF	Non ASB	Sampled	0	002H05

**Building No: 001**    **Room ZA01**    **Description**    **Attic**    **Drawing No: 1A**

Location	Homogeneous Material	Class	Friable	Material Size	Type of Asbestos	Sample Type	% Asbestos	Sample #
Ceiling	Sheet Rock	M	N	0 SF	Non ASB	Sampled	0	002H02
Wall	Sheet Rock	M	N	0 SF	Non ASB	Sampled	0	002H02

**Building No: 001**    **Room ZA02**    **Description**    **Attic**    **Drawing No: 1A**    **No Suspect Materials Present**

Location	Homogeneous Material	Class	Friable	Material Size	Type of Asbestos	Sample Type	% Asbestos	Sample #
----------	----------------------	-------	---------	---------------	------------------	-------------	------------	----------

**Building No: 001**    **Room ZA0K**    **Description**    **Attic**    **Drawing No: 1A**    **No Suspect Materials Present**

Location	Homogeneous Material	Class	Friable	Material Size	Type of Asbestos	Sample Type	% Asbestos	Sample #
----------	----------------------	-------	---------	---------------	------------------	-------------	------------	----------

**Building No: 001**    **Room ZA1A**    **Description**    **Attic**    **Drawing No: 1A**    **No Suspect Materials Present**

Location	Homogeneous Material	Class	Friable	Material Size	Type of Asbestos	Sample Type	% Asbestos	Sample #
----------	----------------------	-------	---------	---------------	------------------	-------------	------------	----------

**Building No: 001**    **Room ZA2A**    **Description**    **Attic**    **Drawing No: 1A**    **No Suspect Materials Present**

Location	Homogeneous Material	Class	Friable	Material Size	Type of Asbestos	Sample Type	% Asbestos	Sample #
----------	----------------------	-------	---------	---------------	------------------	-------------	------------	----------

**Building No: 001**    **Room ZA2B**    **Description**    **Attic**    **Drawing No: 1A**

Location	Homogeneous Material	Class	Friable	Material Size	Type of Asbestos	Sample Type	% Asbestos	Sample #
Wall	Sheet Rock	M	N	0 SF	Non ASB	Sampled	0	R2020

**SACRAMENTO CITY UNIFIED SCHOOL DISTRICT - AHERA 3 YEAR SUSPECT MATERIAL REPORT**

**DATE PRINTED: 6/29/2011**

**SITE: 059**      **DAVID LUBIN**      **Address: 3535 M STREET, Sacramento 95816**

**Building No: 001**    **Room**    **ZAU1**    **Description**    **Attic**    **Drawing No: 1A**

Location	Homogeneous Material	Class	Friable	Material Size	Type of Asbestos	Sample Type	% Asbestos	Sample #
Ceiling	Sheet Rock	M	N	0 SF	Non ASB	Sampled	0	002H04
Wall	Sheet Rock	M	N	0 SF	Non ASB	Sampled	0	002H04

**Building No: 001**    **Room**    **ZAU2**    **Description**    **Attic**    **Drawing No: 1A**

Location	Homogeneous Material	Class	Friable	Material Size	Type of Asbestos	Sample Type	% Asbestos	Sample #
Ceiling	Sheet Rock	M	N	0 SF	Non ASB	Sampled	0	002H04
Wall	Sheet Rock	M	N	0 SF	Non ASB	Sampled	0	002H04

**Building No: 001**    **Room**    **ZEXT**    **Description**    **Exterior**    **Drawing No: 1**

Location	Homogeneous Material	Class	Friable	Material Size	Type of Asbestos	Sample Type	% Asbestos	Sample #
Exterior, Wall	Plaster	S	N	18000 SF	Non ASB	Sampled	0	E8060

**SACRAMENTO CITY UNIFIED SCHOOL DISTRICT - AHERA 3 YEAR SUSPECT MATERIAL REPORT**

**DATE PRINTED: 6/29/2011**

<b>SITE: 059</b>		<b>DAVID LUBIN</b>				<b>Address: 3535 M STREET, Sacramento 95816</b>				
<b>Building No:</b>	<b>002</b>	<b>Room</b>	<b>C004</b>	<b>Description</b>	<b>Office</b>		<b>Drawing No:</b>	<b>3</b>		
<b>Location</b>	<b>Homogeneous Material</b>	<b>Class</b>	<b>Friable</b>	<b>Material Size</b>	<b>Type of Asbestos</b>	<b>Sample Type</b>	<b>% Asbestos</b>	<b>Sample #</b>		
Ceiling	Acoustical Tile, Lay In	M	N	0 SF	Non ASB	Sampled	0	011H00		
Flooring	Vinyl Sheet	M	N	30 SF	Serp	Sampled	15	J1047		
Wall	Sheet Rock	M	N	183 SF	Serp	Sampled	5	012G01		

<b>Building No:</b>	<b>002</b>	<b>Room</b>	<b>C005</b>	<b>Description</b>	<b>Office</b>		<b>Drawing No:</b>	<b>3</b>		
<b>Location</b>	<b>Homogeneous Material</b>	<b>Class</b>	<b>Friable</b>	<b>Material Size</b>	<b>Type of Asbestos</b>	<b>Sample Type</b>	<b>% Asbestos</b>	<b>Sample #</b>		
Ceiling	Acoustical Tile, Lay In	M	N	0 SF	Non ASB	Sampled	0	011H00		
Wall	Sheet Rock	M	N	183 SF	Serp	Sampled	5	012H01		

<b>Building No:</b>	<b>002</b>	<b>Room</b>	<b>H04A</b>	<b>Description</b>	<b>Hallway/Stairs</b>		<b>Drawing No:</b>	<b>3</b>		
<b>Location</b>	<b>Homogeneous Material</b>	<b>Class</b>	<b>Friable</b>	<b>Material Size</b>	<b>Type of Asbestos</b>	<b>Sample Type</b>	<b>% Asbestos</b>	<b>Sample #</b>		
Ceiling	Sheet Rock	M	N	105 SF	Serp	Sampled	5	002H00		
Flooring	Tile 12 In.	M	N	64 SF	Serp	Sampled	1	B1530 Sample <1% Trace		
Wall	Sheet Rock	M	N	512 SF	Serp	Sampled	5	012H01		

<b>Building No:</b>	<b>002</b>	<b>Room</b>	<b>H04B</b>	<b>Description</b>	<b>Hallway/Stairs</b>		<b>Drawing No:</b>	<b>3</b>		
<b>Location</b>	<b>Homogeneous Material</b>	<b>Class</b>	<b>Friable</b>	<b>Material Size</b>	<b>Type of Asbestos</b>	<b>Sample Type</b>	<b>% Asbestos</b>	<b>Sample #</b>		
Ceiling	Sheet Rock	M	N	8 SF	Non ASB	Sampled	0	R2002		
Flooring	Tile 12 In.	M	N	20 SF	Serp	Sampled	1	B1530		
Wall	Sheet Rock	M	N	250 SF	Serp	Sampled	5	012H00		

<b>Building No:</b>	<b>002</b>	<b>Room</b>	<b>H05A</b>	<b>Description</b>	<b>Hallway/Stairs</b>		<b>Drawing No:</b>	<b>3</b>		
<b>Location</b>	<b>Homogeneous Material</b>	<b>Class</b>	<b>Friable</b>	<b>Material Size</b>	<b>Type of Asbestos</b>	<b>Sample Type</b>	<b>% Asbestos</b>	<b>Sample #</b>		
Ceiling	Sheet Rock	M	N	105 SF	Serp	Sampled	5	012H01		
Flooring	Tile 12 In.	M	N	105 SF	Non ASB	Sampled	0	E6014		
Wall	Sheet Rock	M	N	512 SF	Serp	Sampled	5	012H01		

<b>Building No:</b>	<b>002</b>	<b>Room</b>	<b>H05B</b>	<b>Description</b>	<b>Hallway/Stairs</b>		<b>Drawing No:</b>	<b>3</b>		
<b>Location</b>	<b>Homogeneous Material</b>	<b>Class</b>	<b>Friable</b>	<b>Material Size</b>	<b>Type of Asbestos</b>	<b>Sample Type</b>	<b>% Asbestos</b>	<b>Sample #</b>		
Flooring	Tile 12 In.	M	N	20 SF	Serp	Sampled	1	B1533 Sample <1% Trace		
Wall	Sheet Rock	M	N	250 SF	Serp	Sampled	5	012B00		

**SACRAMENTO CITY UNIFIED SCHOOL DISTRICT - AHERA 3 YEAR SUSPECT MATERIAL REPORT**

DATE PRINTED: 6/29/2011

Page 17 of 25

SITE: 059		DAVID LUBIN				Address: 3535 M STREET, Sacramento 95816				
Building No:	002	Room	O04A	Description	Classroom		Drawing No:	3		
Location	Homogeneous Material	Class	Friable	Material Size	Type of Asbestos	Sample Type	% Asbestos	Sample #		
Ceiling	Acoustical Tile, Lay In	M	N	0 SF	Non ASB	Sampled	0	011H00		
Flooring	Tile 12 In.	M	N	900 SF	Non ASB	Sampled	0	E6014		
Flooring	Tile 12 In.	M	N	SF	Serp	Sampled	1	B1533	<1% Trace Under newer floor	
Wall	Sheet Rock	M	N	720 SF	Serp	Sampled	5	012H00		

Building No:		002	Room	O04B	Description	Classroom		Drawing No:	3		
Location	Homogeneous Material	Class	Friable	Material Size	Type of Asbestos	Sample Type	% Asbestos	Sample #			
Ceiling	Acoustical Tile, Lay In	M	N	0 SF	Non ASB	Sampled	0	011H00			
Flooring	Tile 12 In.	M	N	900 SF	Non ASB	Sampled	0	E6014			
Flooring	Tile 12 In.	M	N	SF	Serp	Sampled	1	B1533	<1% Trace Under newer floor		
Wall	Sheet Rock	M	N	720 SF	Serp	Sampled	5	012H00			

Building No:		002	Room	O04C	Description	Classroom		Drawing No:	3		
Location	Homogeneous Material	Class	Friable	Material Size	Type of Asbestos	Sample Type	% Asbestos	Sample #			
Ceiling	Acoustical Tile, Lay In	M	N	0 SF	Non ASB	Sampled	0	011H00			
Flooring	Tile 12 In.	M	N	0 SF	Non ASB	Sampled	0	E6014			
Flooring	Tile 12 In.	M	N	SF	Serp	Sampled	1	B1533	<1% Trace Under newer floor		
Wall	Sheet Rock	M	N	720 SF	Serp	Sampled	5	012H00			

Building No:		002	Room	O04D	Description	Classroom		Drawing No:	3		
Location	Homogeneous Material	Class	Friable	Material Size	Type of Asbestos	Sample Type	% Asbestos	Sample #			
Ceiling	Acoustical Tile, Lay In	M	N	0 SF	Non ASB	Sampled	0	011H00			
Flooring	Tile 12 In.	M	N	900 SF	Non ASB	Sampled	0	E6014			
Flooring	Tile 12 In.	M	N	SF	Serp	Sampled	1	B1533	<1% Trace Under newer floor		
Wall	Sheet Rock	M	N	720 SF	Serp	Sampled	5	012H00			

Building No:		002	Room	O04E	Description	Classroom		Drawing No:	3		
Location	Homogeneous Material	Class	Friable	Material Size	Type of Asbestos	Sample Type	% Asbestos	Sample #			
Ceiling	Acoustical Tile, Lay In	M	N	0 SF	Non ASB	Sampled	0	011H00			
Wall	Sheet Rock	M	N	720 SF	Serp	Sampled	5	012H00			

**SACRAMENTO CITY UNIFIED SCHOOL DISTRICT - AHERA 3 YEAR SUSPECT MATERIAL REPORT**

DATE PRINTED: 6/29/2011

Page 18 of 25

SITE: 059		DAVID LUBIN				Address: 3535 M STREET, Sacramento 95816				
Building No:	002	Room	O05A	Description	Classroom		Drawing No:	3		
Location	Homogeneous Material	Class	Friable	Material Size	Type of Asbestos	Sample Type	% Asbestos	Sample #		
Ceiling	Acoustical Tile, Lay In	M	N	0 SF	Non ASB	Sampled	0	011H00		
Flooring	Tile 12 In.	M	N	900 SF	Non ASB	Sampled	0	E6014		
Flooring	Tile 12 In.	M	N	SF	Serp	Sampled	1	B1533	<1% Trace Under newer floor	
Wall	Sheet Rock	M	N	720 SF	Serp	Sampled	5	012H00		

Building No:	002	Room	O05B	Description	Classroom		Drawing No:	3		
Location	Homogeneous Material	Class	Friable	Material Size	Type of Asbestos	Sample Type	% Asbestos	Sample #		
Ceiling	Acoustical Tile, Lay In	M	N	0 SF	Non ASB	Sampled	0	011H00		
Flooring	Tile 12 In.	M	N	900 SF	Non ASB	Sampled	0	E6014		
Flooring	Tile 12 In.	M	N	SF	Serp	Sampled	1	B1533	<1% Trace Under newer floor	
Wall	Sheet Rock	M	N	720 SF	Serp	Sampled	5	012H00		

Building No:	002	Room	O05C	Description	Classroom		Drawing No:	3		
Location	Homogeneous Material	Class	Friable	Material Size	Type of Asbestos	Sample Type	% Asbestos	Sample #		
Ceiling	Acoustical Tile, Lay In	M	N	0 SF	Non ASB	Sampled	0	011H00		
Flooring	Tile 12 In.	M	N	900 SF	Non ASB	Sampled	0	E6014		
Flooring	Tile 12 In.	M	N	SF	Serp	Sampled	1	B1533	<1% Trace Under newer floor	
Wall	Sheet Rock	M	N	720 SF	Serp	Sampled	5	012H00		

Building No:	002	Room	O05D	Description	Classroom		Drawing No:	3		
Location	Homogeneous Material	Class	Friable	Material Size	Type of Asbestos	Sample Type	% Asbestos	Sample #		
Ceiling	Acoustical Tile, Lay In	M	N	0 SF	Non ASB	Sampled	0	011H00		
Flooring	Tile 12 In.	M	N	900 SF	Non ASB	Sampled	0	E6014		
Flooring	Tile 12 In.	M	N	SF	Serp	Sampled	1	B1533	<1% Trace Under newer floor	
Wall	Sheet Rock	M	N	720 SF	Serp	Sampled	5	012H00		

Building No:	002	Room	O05E	Description	Classroom		Drawing No:	3		
Location	Homogeneous Material	Class	Friable	Material Size	Type of Asbestos	Sample Type	% Asbestos	Sample #		
Ceiling	Acoustical Tile, Lay In	M	N	0 SF	Non ASB	Sampled	0	011H00		
Wall	Sheet Rock	M	N	720 SF	Serp	Sampled	5	012H01		



**SACRAMENTO CITY UNIFIED SCHOOL DISTRICT - AHERA 3 YEAR SUSPECT MATERIAL REPORT**

**DATE PRINTED: 6/29/2011**

<b>SITE: 059</b>		<b>DAVID LUBIN</b>			<b>Address: 3535 M STREET, Sacramento 95816</b>				
<b>Building No:</b>	<b>002</b>	<b>Room</b>	<b>P04A</b>	<b>Description</b>	<b>Plenum</b>		<b>Drawing No:</b>	<b>3A</b>	<b>No Suspect Materials Present</b>
<b>Location</b>	<b>Homogeneous Material</b>	<b>Class</b>	<b>Friable</b>	<b>Material Size</b>	<b>Type of Asbestos</b>	<b>Sample Type</b>	<b>% Asbestos</b>	<b>Sample #</b>	

<b>Building No:</b>	<b>002</b>	<b>Room</b>	<b>P04B</b>	<b>Description</b>	<b>Plenum</b>		<b>Drawing No:</b>	<b>3A</b>	<b>No Suspect Materials Present</b>
<b>Location</b>	<b>Homogeneous Material</b>	<b>Class</b>	<b>Friable</b>	<b>Material Size</b>	<b>Type of Asbestos</b>	<b>Sample Type</b>	<b>% Asbestos</b>	<b>Sample #</b>	

<b>Building No:</b>	<b>002</b>	<b>Room</b>	<b>P04C</b>	<b>Description</b>	<b>Plenum</b>		<b>Drawing No:</b>	<b>3A</b>	<b>No Suspect Materials Present</b>
<b>Location</b>	<b>Homogeneous Material</b>	<b>Class</b>	<b>Friable</b>	<b>Material Size</b>	<b>Type of Asbestos</b>	<b>Sample Type</b>	<b>% Asbestos</b>	<b>Sample #</b>	

<b>Building No:</b>	<b>002</b>	<b>Room</b>	<b>P05A</b>	<b>Description</b>	<b>Plenum</b>		<b>Drawing No:</b>	<b>3A</b>	<b>No Suspect Materials Present</b>
<b>Location</b>	<b>Homogeneous Material</b>	<b>Class</b>	<b>Friable</b>	<b>Material Size</b>	<b>Type of Asbestos</b>	<b>Sample Type</b>	<b>% Asbestos</b>	<b>Sample #</b>	

<b>Building No:</b>	<b>002</b>	<b>Room</b>	<b>P05B</b>	<b>Description</b>	<b>Plenum</b>		<b>Drawing No:</b>	<b>3A</b>	<b>No Suspect Materials Present</b>
<b>Location</b>	<b>Homogeneous Material</b>	<b>Class</b>	<b>Friable</b>	<b>Material Size</b>	<b>Type of Asbestos</b>	<b>Sample Type</b>	<b>% Asbestos</b>	<b>Sample #</b>	

<b>Building No:</b>	<b>002</b>	<b>Room</b>	<b>P05C</b>	<b>Description</b>	<b>Plenum</b>		<b>Drawing No:</b>	<b>3A</b>	<b>No Suspect Materials Present</b>
<b>Location</b>	<b>Homogeneous Material</b>	<b>Class</b>	<b>Friable</b>	<b>Material Size</b>	<b>Type of Asbestos</b>	<b>Sample Type</b>	<b>% Asbestos</b>	<b>Sample #</b>	

<b>Building No:</b>	<b>002</b>	<b>Room</b>	<b>S001</b>	<b>Description</b>	<b>Storage</b>		<b>Drawing No:</b>	<b>3</b>	
<b>Location</b>	<b>Homogeneous Material</b>	<b>Class</b>	<b>Friable</b>	<b>Material Size</b>	<b>Type of Asbestos</b>	<b>Sample Type</b>	<b>% Asbestos</b>	<b>Sample #</b>	
Ceiling	Sheet Rock	M	N	15 SF	Serp	Sampled	5	012H02	
Wall	Sheet Rock	M	N	88 SF	Serp	Sampled	5	012H01	

**SACRAMENTO CITY UNIFIED SCHOOL DISTRICT - AHERA 3 YEAR SUSPECT MATERIAL REPORT**

**DATE PRINTED: 6/29/2011**

**Page 20 of 25**

**SITE: 059**      **DAVID LUBIN**      **Address: 3535 M STREET, Sacramento 95816**

**Building No: 002**    **Room T001**    **Description Toilet**    **Drawing No: 3**

Location	Homogeneous Material	Class	Friable	Material Size	Type of Asbestos	Sample Type	% Asbestos	Sample #
Ceiling	Sheet Rock	M	N	187 SF	Serp	Sampled	5	012H01
Wall	Sheet Rock	M	N	305 SF	Serp	Sampled	5	012H01

**Building No: 002**    **Room T002**    **Description Toilet**    **Drawing No: 3**

Location	Homogeneous Material	Class	Friable	Material Size	Type of Asbestos	Sample Type	% Asbestos	Sample #
Ceiling	Sheet Rock	M	N	15 SF	Serp	Sampled	5	012H02
Wall	Sheet Rock	M	N	305 SF	Serp	Sampled	5	012H01

**Building No: 002**    **Room T003**    **Description Toilet**    **Drawing No: 3**

Location	Homogeneous Material	Class	Friable	Material Size	Type of Asbestos	Sample Type	% Asbestos	Sample #
Ceiling	Sheet Rock	M	N	187 SF	Serp	Sampled	5	012H02
Wall	Sheet Rock	M	N	88 SF	Serp	Sampled	5	012H01

**Building No: 002**    **Room Z004**    **Description Misc. Room**    **Drawing No: 3**

Location	Homogeneous Material	Class	Friable	Material Size	Type of Asbestos	Sample Type	% Asbestos	Sample #
Ceiling	Acoustical Tile, Lay In	M	N	0 SF	Non ASB	Sampled	0	011H00
Wall	Sheet Rock	M	N	600 SF	Serp	Sampled	5	012H01

**Building No: 002**    **Room Z005**    **Description Misc. Room**    **Drawing No: 3**

Location	Homogeneous Material	Class	Friable	Material Size	Type of Asbestos	Sample Type	% Asbestos	Sample #
Ceiling	Acoustical Tile, Lay In	M	N	0 SF	Non ASB	Sampled	0	011H00
Wall	Sheet Rock	M	N	960 SF	Serp	Sampled	2	012H01

**Building No: 002**    **Room ZA01**    **Description Attic**    **Drawing No: 3A**    **No Suspect Materials Present**

Location	Homogeneous Material	Class	Friable	Material Size	Type of Asbestos	Sample Type	% Asbestos	Sample #
----------	----------------------	-------	---------	---------------	------------------	-------------	------------	----------

**Building No: 002**    **Room ZC04**    **Description Crawl Space**    **Drawing No: 3B**    **No Suspect Materials Present**

Location	Homogeneous Material	Class	Friable	Material Size	Type of Asbestos	Sample Type	% Asbestos	Sample #
----------	----------------------	-------	---------	---------------	------------------	-------------	------------	----------

**SACRAMENTO CITY UNIFIED SCHOOL DISTRICT - AHERA 3 YEAR SUSPECT MATERIAL REPORT**

**DATE PRINTED: 6/29/2011**

**Page 21 of 25**

<b>SITE: 059</b>		<b>DAVID LUBIN</b>			<b>Address: 3535 M STREET, Sacramento 95816</b>			
<b>Building No:</b>	<b>002</b>	<b>Room</b>	<b>ZC05</b>	<b>Description</b>	<b>Crawl Space</b>	<b>Drawing No:</b>	<b>3B</b>	<b>No Suspect Materials Present</b>
<b>Location</b>	<b>Homogeneous Material</b>	<b>Class</b>	<b>Friable</b>	<b>Material Size</b>	<b>Type of Asbestos</b>	<b>Sample Type</b>	<b>% Asbestos</b>	<b>Sample #</b>

<b>Building No:</b>	<b>002</b>	<b>Room</b>	<b>ZEXT</b>	<b>Description</b>	<b>Exterior</b>	<b>Drawing No:</b>	<b>3</b>	
<b>Location</b>	<b>Homogeneous Material</b>	<b>Class</b>	<b>Friable</b>	<b>Material Size</b>	<b>Type of Asbestos</b>	<b>Sample Type</b>	<b>% Asbestos</b>	<b>Sample #</b>
Exterior, Wall	Plaster	S	N	12000 SF	Serp	Sampled	1	E8057

**SACRAMENTO CITY UNIFIED SCHOOL DISTRICT - AHERA 3 YEAR SUSPECT MATERIAL REPORT**

**DATE PRINTED: 6/29/2011**

<b>SITE: 059</b>	<b>DAVID LUBIN</b>				<b>Address: 3535 M STREET, Sacramento 95816</b>					
<b>Building No:</b> 003	<b>Room</b> C001	<b>Description</b>	<b>Office</b>			<b>Drawing No:</b> 2				
<b>Location</b>	<b>Homogeneous Material</b>	<b>Class</b>	<b>Friable</b>	<b>Material Size</b>	<b>Type of Asbestos</b>	<b>Sample Type</b>	<b>% Asbestos</b>	<b>Sample #</b>		
Ceiling	Acoustical Tile, Splined	M	N	0 SF	Non ASB	Sampled	0	006B00		
Ceiling	Sheet Rock	M	N	0 SF	Non ASB	Sampled	0	002H02		
Wall	Sheet Rock	M	N	0 SF	Non ASB	Sampled	0	002H09		

<b>Building No:</b> 003	<b>Room</b> M001	<b>Description</b>	<b>Mechanical Room</b>			<b>Drawing No:</b> 2				
<b>Location</b>	<b>Homogeneous Material</b>	<b>Class</b>	<b>Friable</b>	<b>Material Size</b>	<b>Type of Asbestos</b>	<b>Sample Type</b>	<b>% Asbestos</b>	<b>Sample #</b>		
Ceiling	Sheet Rock	M	N	0 SF	Non ASB	Sampled	0	003H03		
HVAC	Duct Seal	M	N	0 SF	Non ASB	Sampled	0	004H01		
Wall	Sheet Rock	M	N	0 SF	Non ASB	Sampled	0	003B00		

<b>Building No:</b> 003	<b>Room</b> M002	<b>Description</b>	<b>Mechanical Room</b>			<b>Drawing No:</b> 2				
<b>Location</b>	<b>Homogeneous Material</b>	<b>Class</b>	<b>Friable</b>	<b>Material Size</b>	<b>Type of Asbestos</b>	<b>Sample Type</b>	<b>% Asbestos</b>	<b>Sample #</b>		
Ceiling	Sheet Rock	M	N	0 SF	Non ASB	Sampled	0	003H03		
HVAC	Duct Seal	M	N	0 SF	Non ASB	Sampled	0	004H01		
Wall	Sheet Rock	M	N	0 SF	Non ASB	Sampled	0	003H02		

<b>Building No:</b> 003	<b>Room</b> P001	<b>Description</b>	<b>Plenum</b>			<b>Drawing No:</b> 2A	<b>No Suspect Materials Present</b>			
<b>Location</b>	<b>Homogeneous Material</b>	<b>Class</b>	<b>Friable</b>	<b>Material Size</b>	<b>Type of Asbestos</b>	<b>Sample Type</b>	<b>% Asbestos</b>	<b>Sample #</b>		
Wall	Sheet Rock	M	N	0 SF	Non ASB	Sampled	0	002H09		

<b>Building No:</b> 003	<b>Room</b> S001	<b>Description</b>	<b>Storage</b>			<b>Drawing No:</b> 2				
<b>Location</b>	<b>Homogeneous Material</b>	<b>Class</b>	<b>Friable</b>	<b>Material Size</b>	<b>Type of Asbestos</b>	<b>Sample Type</b>	<b>% Asbestos</b>	<b>Sample #</b>		
Ceiling	Sheet Rock	M	N	0 SF	Non ASB	Sampled	0	002H09		
Wall	Sheet Rock	M	N	0 SF	Non ASB	Sampled	0	002H09		

<b>Building No:</b> 003	<b>Room</b> T001	<b>Description</b>	<b>Toilet</b>			<b>Drawing No:</b> 2				
<b>Location</b>	<b>Homogeneous Material</b>	<b>Class</b>	<b>Friable</b>	<b>Material Size</b>	<b>Type of Asbestos</b>	<b>Sample Type</b>	<b>% Asbestos</b>	<b>Sample #</b>		
Ceiling	Sheet Rock	M	N	0 SF	Non ASB	Sampled	0	002H09		
Wall	Sheet Rock	M	N	0 SF	Non ASB	Sampled	0	002H08		

**SACRAMENTO CITY UNIFIED SCHOOL DISTRICT - AHERA 3 YEAR SUSPECT MATERIAL REPORT**

**DATE PRINTED: 6/29/2011**

<b>SITE: 059</b>		<b>DAVID LUBIN</b>				<b>Address: 3535 M STREET, Sacramento 95816</b>				
<b>Building No:</b>	<b>003</b>	<b>Room</b>	<b>T002</b>	<b>Description</b>		<b>Toilet</b>		<b>Drawing No:</b>	<b>2</b>	
<b>Location</b>	<b>Homogeneous Material</b>	<b>Class</b>	<b>Friable</b>	<b>Material Size</b>		<b>Type of Asbestos</b>		<b>Sample Type</b>	<b>% Asbestos</b>	<b>Sample #</b>
Ceiling	Sheet Rock	M	N	0 SF		Non ASB		Sampled	0	002H09
Wall	Sheet Rock	M	N	0 SF		Non ASB		Sampled	0	002H09

<b>Building No:</b>	<b>003</b>	<b>Room</b>	<b>Y001</b>	<b>Description</b>		<b>Kindergarten</b>		<b>Drawing No:</b>	<b>2</b>	
<b>Location</b>	<b>Homogeneous Material</b>	<b>Class</b>	<b>Friable</b>	<b>Material Size</b>		<b>Type of Asbestos</b>		<b>Sample Type</b>	<b>% Asbestos</b>	<b>Sample #</b>
Ceiling	Acoustical Tile, Lay In	M	N	0 SF		Non ASB		Sampled	0	005B00
Flooring	Mastic	M	N	SF		Non ASB		Sampled	0	J1053
Flooring	Tile 12 In.	M	N	SF		Non ASB		Sampled	0	J1053
Wall	Sheet Rock	M	N	0 SF		Non ASB		Sampled	0	002B00

<b>Building No:</b>	<b>003</b>	<b>Room</b>	<b>Y002</b>	<b>Description</b>		<b>Kindergarten</b>		<b>Drawing No:</b>	<b>2</b>	
<b>Location</b>	<b>Homogeneous Material</b>	<b>Class</b>	<b>Friable</b>	<b>Material Size</b>		<b>Type of Asbestos</b>		<b>Sample Type</b>	<b>% Asbestos</b>	<b>Sample #</b>
Ceiling	Acoustical Tile, Lay In	M	N	0 SF		Non ASB		Sampled	0	005H01
Flooring	Mastic	M	N	SF		Non ASB		Sampled	0	J1053
Flooring	Tile 12 In.	M	N	SF		Non ASB		Sampled	0	J1053
Wall	Sheet Rock	M	N	0 SF		Non ASB		Sampled	0	002H08

<b>Building No:</b>	<b>003</b>	<b>Room</b>	<b>ZEXT</b>	<b>Description</b>		<b>Exterior</b>		<b>Drawing No:</b>	<b>2</b>	
<b>Location</b>	<b>Homogeneous Material</b>	<b>Class</b>	<b>Friable</b>	<b>Material Size</b>		<b>Type of Asbestos</b>		<b>Sample Type</b>	<b>% Asbestos</b>	<b>Sample #</b>
Exterior, Wall	Plaster	S	N	800 SF		Non ASB		Sampled	0	E6017

**SACRAMENTO CITY UNIFIED SCHOOL DISTRICT - AHERA 3 YEAR SUSPECT MATERIAL REPORT**

**DATE PRINTED: 6/29/2011**

<b>SITE: 059</b>		<b>DAVID LUBIN</b>				<b>Address: 3535 M STREET, Sacramento 95816</b>				
<b>Building No:</b>	<b>P01</b>	<b>Room</b>	<b>O007</b>	<b>Description</b>	<b>Classroom</b>		<b>Drawing No:</b>	<b>1</b>		
<b>Location</b>	<b>Homogeneous Material</b>	<b>Class</b>	<b>Friable</b>	<b>Material Size</b>		<b>Type of Asbestos</b>	<b>Sample Type</b>	<b>% Asbestos</b>	<b>Sample #</b>	
Ceiling	Acoustical Tile, Splined	M	N	960	SF	Non ASB	Sampled	0	E6015	
Ceiling	Sheet Rock	M	N	0	SF	Non ASB	Sampled	0	016B00	
Flooring	Tile 12 In.	M	N	960	SF	Non ASB	Sampled	0	E6016	
HVAC	Flex Joint	M	N	6	SF	Other	Assumed	N/A		
Mechanical	Flue	M	N	4	LF	Other	Assumed	N/A		
Wall	Sheet Rock	M	N	0	SF	Non ASB	Sampled	0	016B00	

<b>Building No:</b>	<b>P01</b>	<b>Room</b>	<b>O008</b>	<b>Description</b>	<b>Classroom</b>		<b>Drawing No:</b>	<b>1</b>		
<b>Location</b>	<b>Homogeneous Material</b>	<b>Class</b>	<b>Friable</b>	<b>Material Size</b>		<b>Type of Asbestos</b>	<b>Sample Type</b>	<b>% Asbestos</b>	<b>Sample #</b>	
Ceiling	Acoustical Tile, Splined	M	N	960	SF	Non ASB	Sampled	0	R2011	
Flooring	Tile 12 In.	M	N	960	SF	Non ASB	Sampled	0	E6016	
Mechanical	Flue	M	N	4	LF	Other	Assumed	N/A		
Wall	Transite Chalk Board	M	N	128	SF	Other	Assumed	N/A		

<b>Building No:</b>	<b>P01</b>	<b>Room</b>	<b>O009</b>	<b>Description</b>	<b>Classroom</b>		<b>Drawing No:</b>	<b>1</b>		
<b>Location</b>	<b>Homogeneous Material</b>	<b>Class</b>	<b>Friable</b>	<b>Material Size</b>		<b>Type of Asbestos</b>	<b>Sample Type</b>	<b>% Asbestos</b>	<b>Sample #</b>	
Flooring	Tile 12 In.	M	N	960	SF	Non ASB	Sampled	0	E6016	
Wall	Sheet Rock	M	N	912	SF	Non ASB	Sampled	0	R2192	

<b>Building No:</b>	<b>P01</b>	<b>Room</b>	<b>O010</b>	<b>Description</b>	<b>Classroom</b>		<b>Drawing No:</b>	<b>1</b>		
<b>Location</b>	<b>Homogeneous Material</b>	<b>Class</b>	<b>Friable</b>	<b>Material Size</b>		<b>Type of Asbestos</b>	<b>Sample Type</b>	<b>% Asbestos</b>	<b>Sample #</b>	
Flooring	Tile 12 In.	M	N	960	SF	Non ASB	Sampled	0	E6016	
Wall	Fire Rated Door	M	N	21	SF	Other	Assumed	N/A		
Wall	Sheet Rock	M	N	912	SF	Non ASB	Sampled	0	R2191	

<b>Building No:</b>	<b>P01</b>	<b>Room</b>	<b>O011</b>	<b>Description</b>	<b>Classroom</b>		<b>Drawing No:</b>	<b>1</b>		
<b>Location</b>	<b>Homogeneous Material</b>	<b>Class</b>	<b>Friable</b>	<b>Material Size</b>		<b>Type of Asbestos</b>	<b>Sample Type</b>	<b>% Asbestos</b>	<b>Sample #</b>	
Flooring	Tile 12 In.	M	N	960	SF	Non ASB	Sampled	0	E6016	
Wall	Fire Rated Door	M	N	21	SF	Other	Assumed	N/A		
Wall	Sheet Rock	M	N	912	SF	Non ASB	Sampled	0	R2192	

**SACRAMENTO CITY UNIFIED SCHOOL DISTRICT - AHERA 3 YEAR SUSPECT MATERIAL REPORT**

**DATE PRINTED: 6/29/2011**

**SITE: 059**      **DAVID LUBIN**      **Address: 3535 M STREET, Sacramento 95816**

**Building No: P01**    **Room O012**    **Description Classroom**    **Drawing No: 1**    **Built With Non-Asbestos Materials**

Location	Homogeneous Material	Class	Friable	Material Size	Type of Asbestos	Sample Type	% Asbestos	Sample #
Flooring	Tile 12 In.	M	N	960 SF	Non ASB	Sampled	0	E6016
Wall	Fire Rated Door	M	N	21 SF	Other	Assumed	N/A	
Wall	Sheet Rock	M	N	912 SF	Non ASB	Sampled	0	R2192

**Building No: P02**    **Room O013**    **Description Classroom**    **Drawing No: 1**    **Built With Non-Asbestos Materials**

Location	Homogeneous Material	Class	Friable	Material Size	Type of Asbestos	Sample Type	% Asbestos	Sample #
----------	----------------------	-------	---------	---------------	------------------	-------------	------------	----------

**Building No: P02**    **Room O014**    **Description Classroom**    **Drawing No: 1**    **Built With Non-Asbestos Materials**

Location	Homogeneous Material	Class	Friable	Material Size	Type of Asbestos	Sample Type	% Asbestos	Sample #
----------	----------------------	-------	---------	---------------	------------------	-------------	------------	----------

**Building No: P02**    **Room O015**    **Description Classroom**    **Drawing No: 1**    **Built With Non-Asbestos Materials**

Location	Homogeneous Material	Class	Friable	Material Size	Type of Asbestos	Sample Type	% Asbestos	Sample #
----------	----------------------	-------	---------	---------------	------------------	-------------	------------	----------