



**Administrative Services
Contracts Office**

5735 47th Avenue • Sacramento, CA 95824
(916) 643-2464 • FAX (916) 643-2190

*Jonathan P. Raymond, Superintendent
Patricia A. Hagemeyer, Chief Business Officer*

Via Electronic Mail

A D D E N D U M N O . 1

Date: March 28, 2011

Issued by: Sacramento City Unified School District

Project: PC11-700-0151, Leonardo da Vinci Parking Lot Project

You are hereby notified of the following changes, clarifications, or modifications to the original Contract Documents, Specifications, and Drawings. This Addendum shall supersede the original project documents, and shall take precedence over anything to the contrary therein. All Addenda shall be acknowledged in the Bid Form. Failure to do so may result in disqualification of the bid. All other conditions remain unchanged.

- Item 1: The Contractor shall make provisions for traffic control including any temporary signing, striping and delineation for proper parking lot operation if permanent signing striping and delineation cannot be completed prior to opening of the parking lot for start of school on Monday, April 25, 2011. Temporary signing, striping and delineation shall consist of pavement tape, temporary glue down paving markers, cones, etc. as required to delineate the traffic flow lanes, bus parking and general parking areas. The vehicle parking areas do not have to have each stall delineated just the general limits of the parking areas. The Contractor shall submit a temporary traffic plan including a list of materials for approval by the District by Wednesday April 13, 2011. The cost for staging of the project to accommodate the opening of the parking lot prior to project completion including additional move-ins for seal coats, signing, striping, delineation and any temporary signing, striping, and delineation shall be included the base bid with no additional compensation allowed there for.

Item 2: Construction Note 15, Sheet 5 is revised as follows:

15. DIGOUT PAVEMENT & REPAIR AREAS SHALL BE MARKED IN THE FIELD BY ENGINEER OR DISTRICT REPRESENTATIVE. APPROXIMATE LOCATIONS ARE SHOWN FOR SAW CUTTING AC, AC/AB REMOVAL, COMPACTION OF EXISTING AB AND INSTALLATION OF 4" AC & 8" AB OVER COMPACTED SUBGRADE. ESTIMATED AREA OF DIGOUT IS 12,000 SF.

This change is shown on Sheet 5 as Revision 1, Addendum No. 1.

Item 3: Construction Note 28, Sheet 5 is revised as follows:

28. INSTALL 4' WIDEx42"HIGH PEDESTRIAN GATE (5 TOTAL) PER DETAIL 10, SHEET 8.

This change is shown on Sheet 5 as Revision 1, Addendum No. 1.

Item 4: Construction Note 38 added to Sheet 5 and reads as follows:

38. INSTALL 36" HIGH BOOMERANG TD5200 SURFACE MOUNT REBOUNDABLE DELINEATOR, OR EQUIVALENT, AT 8' O.C. (16 EACH)

This change is shown on Sheet 5 as Revision 1, Addendum No. 1.

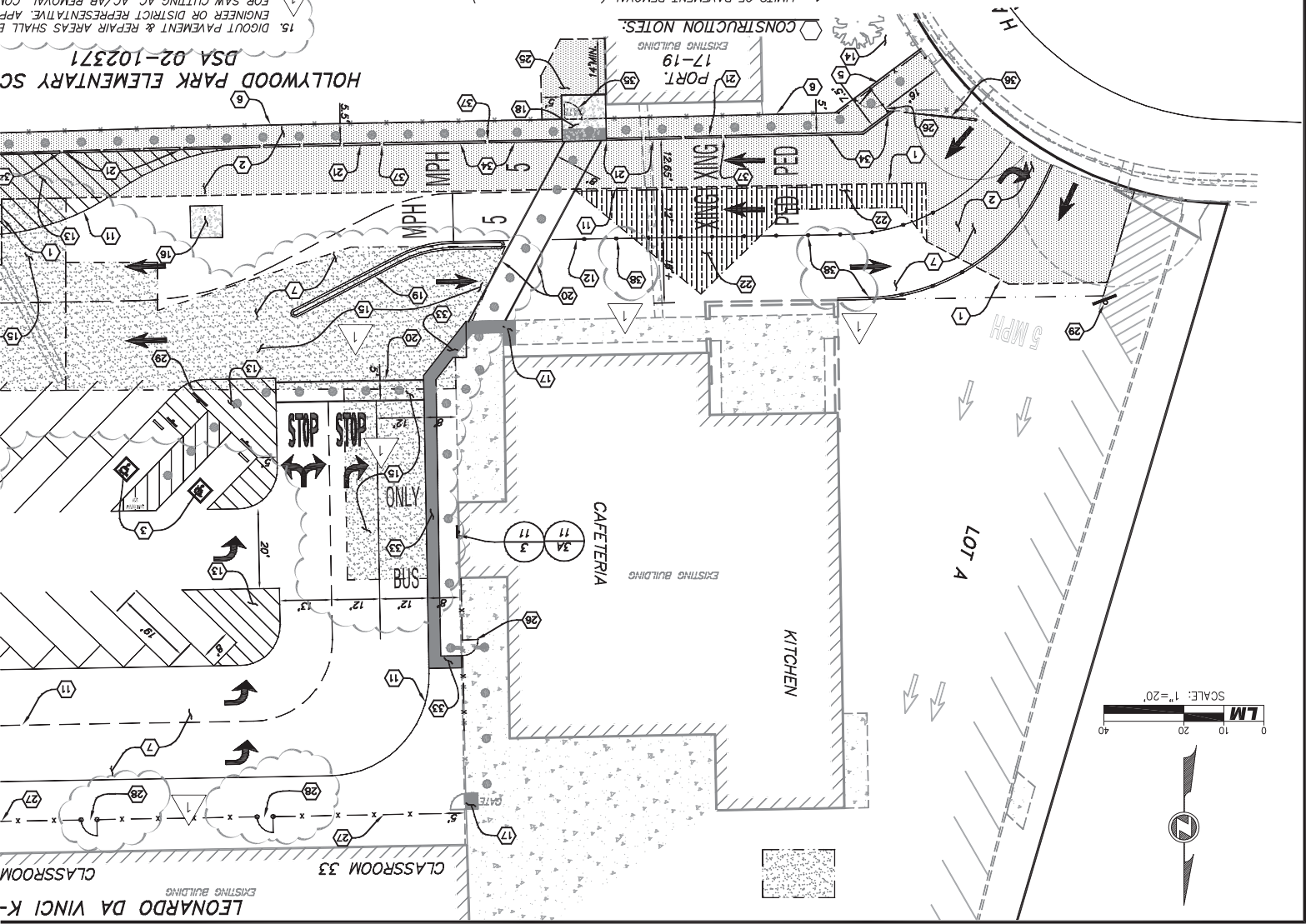
END OF ADDENDUM NO. 1

Attachments:

Amended plans/notes provided by Laugenour and Meikle Engineering. Sheet 5 is attached with changes on Construction Notes 15, 28, and 38.

DESIGNED BY BPP		DRAWN BY JB		CHECKED BY BPP	
REV.	DATE	DESCRIPTION	BY	APP'D.	DATE
1	03-28-11	ADDENDUM NO. 1	BPP		

- LEGEND:**
- TYPE I PAVEMENT ARROW (14 TOTAL)
 - TYPE III PAVEMENT ARROW (1 TOTAL)
 - TYPE IV PAVEMENT ARROW (8 TOTAL)
 - TYPE VII PAVEMENT ARROW (3 TOTAL)
 - PARKING STALL COUNT (90 TOTAL)
- GENERAL NOTES:**
- CONTRACTOR SHALL POthOLE AND VERIFY DEPTHS AND LOCATIONS OF EXISTING UTILITIES AS FIRST ITEM OF WORK, AND NOTIFY ENGINEER OF ANY CONFLICTS.
 - THE CONTRACTOR SHALL REMOVE ALL OBSTRUCTIONS, BOTH ABOVE AND BELOW GROUND AS REQUIRED FOR THE CONSTRUCTION OF THE PROPOSED IMPROVEMENTS. WHEN FEASIBLE SUCH WORK SHALL BE COMPLETED PRIOR TO GRADING.
 - EXISTING A.B. TO BE REMOVED DURING DEMOLITION ACTIVITIES CAN BE STOCK-PILED AND USED AS BACKFILL FOR TREE REMOVAL AREAS AND TRENCH BACKFILL AS APPROVED BY GEOTECHNICAL ENGINEER.
 - ADDITIONAL PAVEMENT REPAIR AREAS, NOT SHOWN ON PLANS, SHALL BE MARKED IN THE FIELD BY ENGINEER AND DISTRICT REPRESENTATIVE.
 - ALL UNSUITABLE AND SURPLUS MATERIALS SHALL BECOME THE PROPERTY OF THE CONTRACTOR AND SHALL BE REMOVED FROM THE SITE UNLESS SPECIFIED OTHERWISE.
 - WHERE LANDSCAPE AREAS ARE DISTURBED, REPLACE IN KIND OR EXTEND AS REQUIRED TO MATCH EXISTING, INCLUDING IRRIGATION SYSTEM.
- CONSTRUCTION NOTES:**
- LIMITS OF PAVEMENT REMOVAL (---).
 - INSTALL 4" A.C. AND 8" A.B. OVER COMPACTED SUBGRADE (14,850 SF).
 - INSTALL ACCESSIBLE PARKING AND SIGNAGE WHERE SHOWN (1 VAN & 1 STANDARD ACCESSIBLE STALL) PER DETAIL 1, SHEET 11.
 - 2% MAXIMUM SLOPE IN ANY DIRECTION AT ADA PARKING STALLS. CONTRACTOR SHALL VERIFY TOP OF A.B. GRADE PRIOR TO PAVING FOR SLOPE COMPLIANCE. FINISHED CONCRETE GRADES WILL BE VERIFIED BY ENGINEER PRIOR TO ACCEPTANCE. FOR ANY SLOPES GREATER THAN THE 2% MAXIMUM ALLOWED, THE CONTRACTOR SHALL REMOVE AND REPLACE AS REQUIRED FOR FULL COMPLIANCE.
 - CONTRACTOR SHALL INSTALL 5" CONCRETE SLAB WITH 6X6-W2.9XW2.9 WAF OVER EXISTING A.B..
 - INSTALL 6" HIGH CHAIN LINK FENCE FOR NEW PARKING LOT LAYOUT PER DETAIL 4, SHEET 9 (CALTRANS STANDARD PLAN A85), WITH 1-5/8" O.D. TOP RAIL AND STANDARD EYE-TOPS AT POSTS. FIELD VERIFY WITH DISTRICT REPRESENTATIVE ALL FENCE AND GATE LOCATIONS, HEIGHTS AND OPENINGS PRIOR TO INSTALLING.
 - INSTALL 6" EXTENDED CURB PER DETAIL 8, SHEET 8.
 - INSTALL SEAL COAT (OVERKOTE, OR APPROVED EQUIVALENT PER THE SPECIAL PROVISIONS SPECIFIED ON THIS SHEET) OVER NEW AND EXISTING A.C. PAVING AREAS (75,000 SF). KEEP EXISTING CONCRETE AREAS CLEAN. LIMITS OF SEAL COAT (---).
 - INSTALL ACCESSIBLE PARKING AND SIGNAGE WHERE SHOWN (1 VAN & 1 STANDARD ACCESSIBLE STALL) PER DETAIL 2, SHEET 11.
 - 4" WIDE PAINTED PARKING STALL STRIPES (TYP.).
 - FIELD VERIFY "NO PARKING" FIRE LANES WITH FIRE MARSHALL PRIOR TO SIGNING AND STRIPING.
 - INSTALL 4" WIDE WHITE LONGITUDINAL PAVEMENT MARKING.
 - INSTALL 4" WIDE YELLOW LONGITUDINAL PAVEMENT MARKING.
 - INSTALL 4" WIDE WHITE LINE DIAGONAL AT 3' ON CENTER.
 - REPAIR/REPLACE LANDSCAPE MATERIAL AND IRRIGATION SYSTEM IN KIND. CAP IRRIGATION SYSTEM THAT EXTENDS INTO NEW PAVEMENT AREA. FIELD VERIFY WITH DISTRICT REPRESENTATIVE.
 - INSTALL 4" WIDE X 42" HIGH PEDESTRIAN GATE (90 TOTAL).



[illegible]

X:\Land Projects\2778-19\dwg\2778-19_C05.dwg

REDUCED PLOT