



SACRAMENTO CITY UNIFIED SCHOOL DISTRICT BOARD OF EDUCATION

Agenda Item# 13.1f

Meeting Date: September 21, 2023

Subject: **Approve Resolution No. 3342: Resolution to Convey Public Utilities and Public Facilities to the County of Sacramento at Ethel Baker Elementary School**

- Information Item Only
- Approval on Consent Agenda
- Conference (for discussion only)
- Conference/First Reading (Action Anticipated: _____)
- Conference/Action
- Action
- Public Hearing

Division: Facility Support Services

Recommendation: Subsequent to the Public Hearing on this resolution, approve Resolution No. 3342, which conveys easement entitlements to the County of Sacramento for public sidewalk improvements at Ethel I Baker Elementary.

Background/Rationale: The Sacramento County is seeking to acquire a permanent easement for public sidewalk improvements as part of their *South Sacramento Safe Routes to School Project* over a portion of Ethel Baker School property, located at 5717 Laurine Way, in Sacramento County. The County is proposing the project to enhance the walkability and ADA access to school. A temporary construction easement for 36 months is also required in order to provide the County with the needed space to complete the construction of the sidewalk upgrade.

Financial Considerations: Sacramento County will pay the District \$3,300 for the Easements.

LCAP Goal(s): Operational Excellence

Documents Attached:

1. Resolution No. 3342
2. Attachment A: Legal Description of the Permanent Easement
3. Attachment B: Legal Description of the Temporary Construction Easement

Estimated Time of Presentation: NA

Submitted by: Nathaniel Browning, Director of Facilities
Ben Wangberg, Facilities Planning Manager

Approved by: Lisa Allen, Interim Superintendent

**SACRAMENTO CITY UNIFIED SCHOOL DISTRICT
BOARD OF EDUCATION**

RESOLUTION NO. 3342

**RESOLUTION TO CONVEY PUBLIC UTILITIES AND PUBLIC FACILITIES TO THE
COUNTY OF SACRAMENTO AT ETHEL BAKER ELEMENTARY SCHOOL**

WHEREAS, the Sacramento City Unified School District (“District”) owns the property at Ethel Baker Elementary School located at 5717 Laurine Way, in the County of Sacramento;

WHEREAS, the County of Sacramento is seeking to acquire a permanent easement (“Permanent Easement”) for the *South Sacramento Safe Routes to School Project*, which will consist of the installation of a wider public sidewalk over a portion of the property along Iowa Avenue;

WHEREAS, the County of Sacramento is also seeking to acquire a temporary construction easement (“TCE”) to complete the *South Sacramento Safe Routes to School Project* at the above property.

WHEREAS, a widened public sidewalk improves public safety and the walkability to school and can accommodate the installation of an ADA curb extension/ramp;

WHEREAS, the Permanent Easement totals 462 square feet and is located at the northern property edge, immediately adjacent to Iowa Avenue (and the public sidewalk), and the easement is roughly rectangular in shape and is 2 feet in width;

WHEREAS, the legal description of the Permanent Easement is further described in Attachment A to this Resolution;

WHEREAS, the TCE will total 1,306± square feet and is adjacent to the northwest corner of the parcel and extends along the northern parcel boundary, and is located around the Easement (south, west, and east);

WHEREAS, the term of the TCE is 36 months, even though the active construction is anticipated to be for 30 days; and

WHEREAS, the legal description of the TCE is further described in Attachment B to this Resolution;

WHEREAS, the County of Sacramento desires to acquire an area of approximately 1,768 square feet for said Easements for \$3,300.

WHEREAS, on August 17, 2023, the Board of Education adopted Resolution No. 3340, declaring its intention to convey easement entitlements to the County of Sacramento for public easements at Ethel I. Baker Elementary and providing notice of a public hearing for adoption of this Resolution to convey such entitlements.

WHEREAS, Resolution No. 3340 was posted in three public places within the District and a Notice of Public Hearing was published in The Daily Recorder on September 5, 2023.

NOW, THEREFORE, BE IT RESOLVED by the Sacramento City Unified School District Board of Education which finds and determines as follows:

1. Adopts the foregoing recitals as true and correct.
2. Adopts this Resolution conveying easement entitlements to the County of Sacramento for public easements at Ethel I. Baker Elementary located at 5717 Laurine Way, in the County of Sacramento.
3. Authorizes the Superintendent, or his designee, to review and execute any and all easement entitlements with related facilities, including agreements and plans, to the County of Sacramento as necessary

to carry out the purpose of this Resolution.

PASSED AND ADOPTED by the Sacramento City Unified School District Board of Education on this 21st day of September 2023, by the following vote:

AYES: _____
NOES: _____
ABSTAIN: _____
ABSENT: _____

ATTESTED TO:

Chinua Rhodes
President of the Board of Education

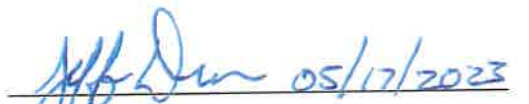
Lisa Allen
Interim Superintendent

EXHIBIT "A"
DESCRIPTION

All that real property situated in the County of Sacramento, State of California, being a portion of the parcel of land described in that Deed recorded on July 25, the year 1950, in Book 1879 of Official Records at Page 13, in the Office of the County Recorder of Sacramento County, said portion being described as follows:

Commencing at the intersection of the centerline of a 42 foot-wide roadway (currently Iowa Avenue) with the centerline of a 42 foot-wide roadway (currently Laurine Way), as shown on that certain Plat titled, *The Plat of Sandra Heights*, filed in the Office of said County Recorder, in Book 31 of Maps at Map No. 8; thence along the said centerline of Iowa Avenue, North 89°37'30" East, 42.02 feet; thence leaving said centerline, South 00°22'30" East, 21.00 feet to a point on the south right of way line of Iowa Avenue, as shown on said Plat, said point being the Point of Beginning; thence from said **Point of Beginning**, along said south right of way line, North 89°37'30" East, 234.71 feet; thence leaving said south right of way line, South 59°58'17" West, 4.04 feet to a line parallel with and having a perpendicular distance of 2.00 feet from said south right of way line; thence along said parallel line, South 89°37'30" West, 227.19 feet; thence leaving said parallel line, North 63°48'49" West, 4.47 feet to the Point of Beginning, containing an area of approximately 462 square feet.

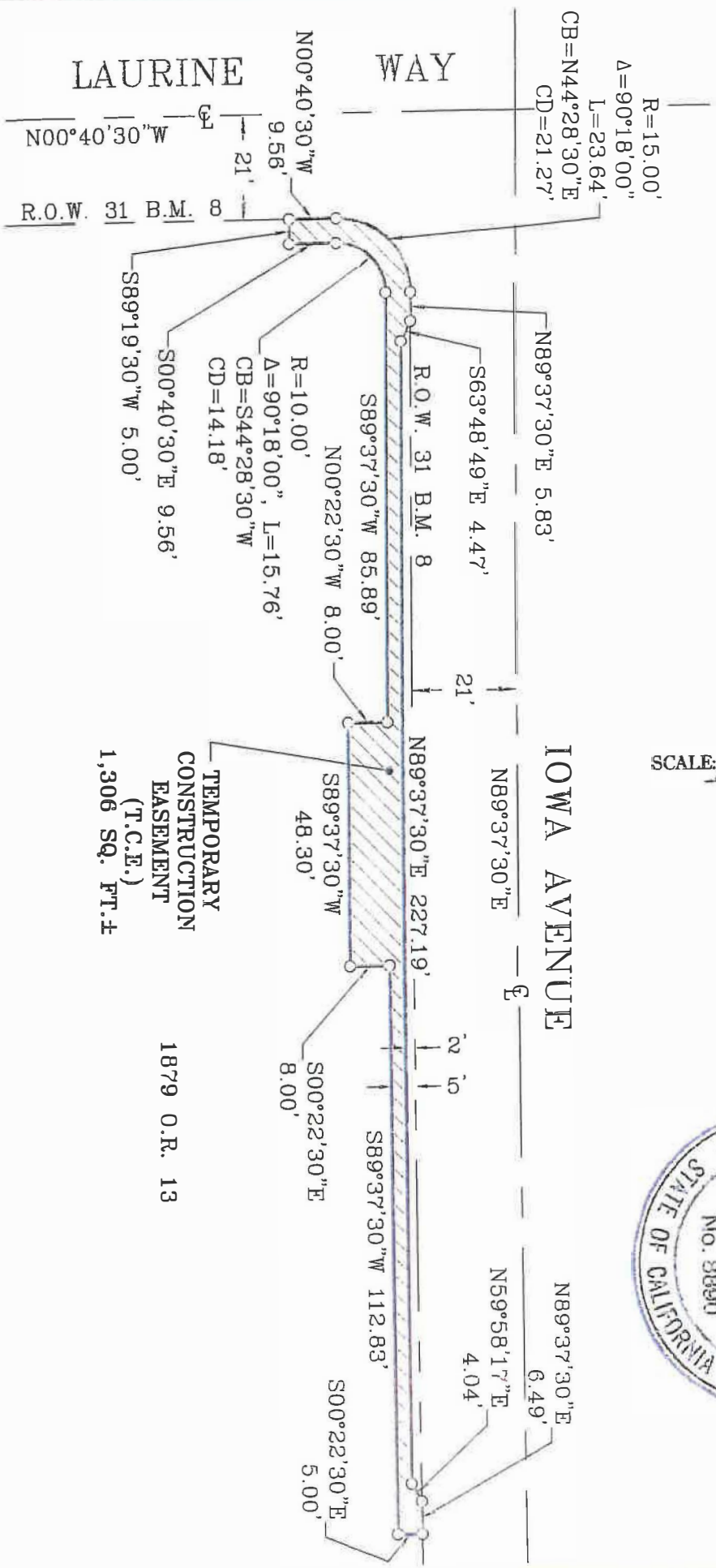
See Exhibit "B", plat to accompany this description, attached hereto and made part hereof.


Jeffrey M. Dron
State of California Licensed Land Surveyor



LEGEND

- DIMENSION POINT
- R.O.W. RIGHT OF WAY
- O.R. OFFICIAL RECORD
- B.M. BOOK OF MAPS
- ⊥ STREET CENTERLINE



COUNTY OF SACRAMENTO
 COMMUNITY DEVELOPMENT DEPARTMENT
 SURVEY SECTION
 SCALE: 1"=30' S515 MAY 2023

T.C.E. EXHIBIT B
 PORTION OF LAND DESCRIBED IN BOOK 1879 O.R. PAGE 13
 (A.P.N. 026-0151-001)
 COUNTY OF SACRAMENTO - STATE OF CALIFORNIA
 PAGE 1 OF 1