



Business Services

Contracts Office

5735 47th Avenue • Sacramento, CA 95824

(916) 643-2464

Rose Ramos, Chief Business Officer

Jessica Sulli, Contract Specialist

ADDENDUM NO. 2

Date: June 11, 2021

Issued by: Sacramento City Unified School District

Project: 0144-401, Hubert H. Bancroft Playground

You are hereby notified of the following changes, clarifications, or modifications to the original Contract Documents, Specifications, and Drawings. This Addendum shall supersede the original project documents, and shall take precedence over anything to the contrary therein. All Addenda shall be acknowledged in the Bid Form. Failure to do so may result in disqualification of the bid. All other conditions remain unchanged.

Bid Clarifications

As noted in construction note 4, and which applies to the paving on C2.1 and C2.2, sealcoat is not required for the large hardcourt area. It was understood that there was no time for the 30 day cure on this new AC so it was eliminated for the new AC in this area. It will be provided at a later date under separate contract.

Sealcoat is only required in the Kinder areas shown on sheet C2.3. The majority of these areas are either existing paving where the 30 day cure would be achieved by default, or is minimal patch paving which can be completed early in the project. Should the construction schedule not permit even the 30 day cure time for the patch paving in the Kinder areas, contractor may submit a request (by RFI) for a reduction in the 30 day cure, which will be approved on this project down to no less than 15 days.

Drawing Changes

Contract Drawings are modified per the clouded changes depicted on the attached revised drawings and are described as follows:

C0.0 – Cover Sheet

1. Sheet index has been updated to reflect new sheet C2.3

C1.1 – Demolition Plan

1. View 1 has been updated to reflect additional demolition shown on other sheets and reference those sheets for reference.
2. Demolition for 1 parking stall south of the large hardcourt has been eliminated. The parking stall work in that area was eliminated on all other sheets but the demolition work still remained by error.



C2.1 – Grading Plan

1. Per bid comment, construction note 17 has been eliminated from the plan. The work related to this note was previously removed from the scope and this note is no longer needed.

C2.2 – Grading Plan

1. Per bid comment, construction note 17 has been eliminated from the plan. The work related to this note was previously removed from the scope and this note is no longer needed.
2. View 2 has been removed from this sheet and added to new sheet C2.3.

C2.3 – Grading Plan (new plan sheet)

1. View 2, previously shown on C2.2, is now shown on this sheet.
2. View 2 has been updated to reflect some edge grinding to remove a lip in the pavement at the edge of the concrete. Construction note 27 has been added to describe the proposed work.
3. View 2 has been updated to reflect the removal and patch of an existing in-ground hose bib. Construction note 28 has been added to describe the proposed work.
4. New view 1 depicts additional requested crack fill and sealcoat scope to be included in the project. Construction note 26 has been added to describe the proposed work.
5. New view 1 depicts some sawcut and patch of a 5'x5' pavement area near the existing 4' tall fence line. Construction note 29 has been added to describe the proposed work.
6. New view 1 depicts sawcut and patch of a 24" strip of ac along the edge of walks to eliminate the deteriorated paving along this edge. Construction note 31 has been added to describe the proposed work.
1. New view 1 depicts sawcut and patch of the paving around an existing drain inlet and patch back with a concrete apron and patch AC paving. Construction note 30 and 31 have been added to describe the proposed work.

C6.1 – Drainage and Utility Plan

1. Per bid comment, detail 8 has been eliminated from the plan. The work related to this detail was previously removed from the scope and this detail is no longer needed.


END OF ADDENDUM NO. 2

HUBERT H. BANCROFT ELEMENTARY SCHOOL

2021 PAVING REPAIRS

2929 Belmar St.
Sacramento, CA 95826

DSA



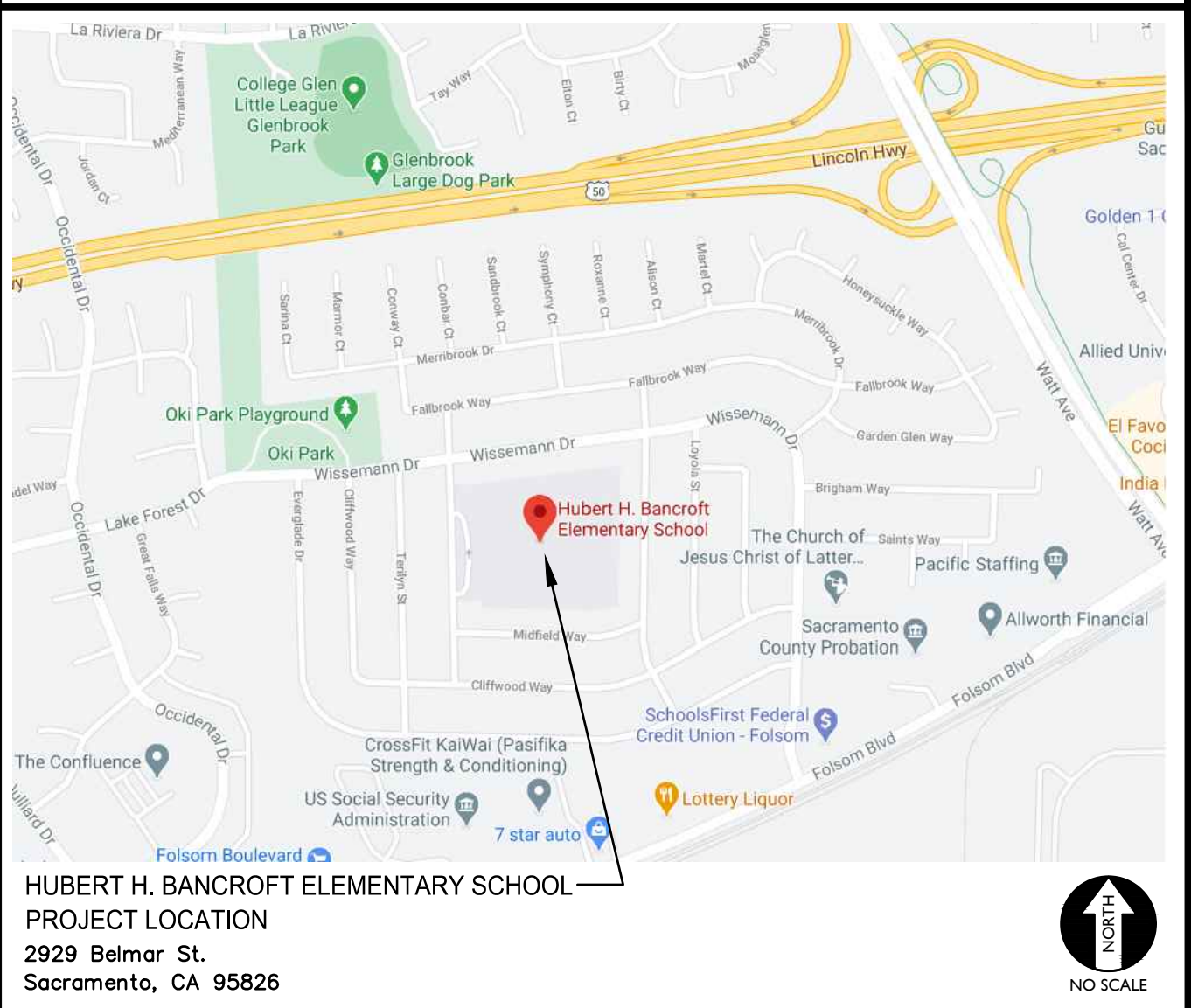
WARREN CONSULTING ENGINEERS, INC.
1117 WINFIELD WAY, SUITE 110
EL DORADO HILLS, CA 95762 | (916) 985-1870

ABBREVIATIONS

NOTE: NOT ALL ABBREVIATIONS MAY BE USED ON THESE PLANS.

AB	AGGREGATE BASE	JP	JOINT UTILITY POLE
AC	ASPHALTIC CONCRETE	LF	LINEAL FEET
AD	AREA DRAIN	LT	LIP OF GUTTER
APN	ASSESSOR'S PARCEL NUMBER	MS	MOWSTRIP
ARV	AIR RELEASE VALVE	NTS	NOT TO SCALE
ASB	AGGREGATE SUB-BASE	OH	OVERHEAD
BO	BLOW-OFF VALVE	PCC	PORTLAND CEMENT CONCRETE
BV	BUTTERFLY VALVE	PD	PLANTER DRAIN
BW	BACK OF WALK	PV	POST INDICATOR VALVE
C/L	CENTERLINE	P/L	PROPERTY LINE
CB	CATCH BASIN	PP	POWER POLE
CL	CLASS	PUE	PUBLIC UTILITY EASEMENT
CMP	CORRUGATED METAL PIPE	PVC	POLYVINYL CHLORIDE
CATV	CABLE TELEVISION	RCP	REINFORCED CONCRETE PIPE
CO	CLEANOUT	R	RADIUS
COMM	COMMUNICATION	RIM	REDUCED PRESSURE
CONC.	CONCRETE	RP	BACKFLOW PREVENTER
CONST.	CONSTRUCT	RP	BACKFLOW PREVENTER
CR	CURB RETURN	RP	BACKFLOW PREVENTER
CS	CONCRETE SURFACE	RP	BACKFLOW PREVENTER
DC	DOUBLE CHECK VALVE	SCH	SCHEDULE
DCC	DOUBLE DETECTOR CHECK VALVE	SD	STORM DRAIN
DG	DECOMPOSED GRANITE	SDMH	STORM DRAIN MANHOLE
DI	DROP INLET	SS	SUBGRADE ELEVATION
DIA	DIAMETER	SI	SIDE INLET
DIP	DUCTILE IRON PIPE	SS	SANITARY SEWER
DWG	DRAWING	SSMH	SANITARY SEWER MANHOLE
DS	DOWNSPOUT	STD	STANDARD
E	ELECTRIC	S/W	SIDEWALK
ESMT	EDGE OF PAVEMENT	T	TELEPHONE
EXIST	EASEMENT EXISTING	TC	TOP OF CURB
FX	FIRE SERVICE LINE	TD	TRENCH DRAIN
FDC	FIRE DEPARTMENT CONNECTION	TDCB	TRENCH DRAIN CATCH BASIN
FL	FLOWLINE	TP	TELEPHONE POLE
FM	SANITARY SEWER FORCE MAIN	TRW	TOP OF RETAINING WALL
FF	FINISHED FLOOR ELEVATION	TSW	TOP OF SEAT WALK
FH	FIRE HYDRANT	TW	TOP OF WALK ELEVATION
G	GAS	U	UTILITY
GRD	GRADE ELEVATION	UC	UNDERGROUND
GV	GATE VALVE	UON	UNLESS OTHERWISE NOTED
HB	HOSE BIBB	VCP	VITRIFIED CLAY PIPE
HDB	HEADER BOARD	W	WATER
HDPE	HIGH DENSITY POLYETHYLENE PIPE	W/O	WITHOUT
HP	HIGH POINT	WV	WATER VALVE
INV	PIPE INVERT ELEVATION		

VICINITY MAP



SITE MAP



APPLICABLE CODES & STANDARDS

- BUILDING STANDARDS ADMINISTRATIVE CODE, PART 1, TITLE 24 C.C.R.
- 2019 CALIFORNIA BUILDING CODE (CBC), PART 2, TITLE 24 C.C.R. (2012 INTERNATIONAL BUILDING CODE VOLUME 1-2 AND 2013 CALIFORNIA AMENDMENTS)
- 2019 CALIFORNIA PLUMBING CODE (CPC), PART 5, TITLE 24 C.C.R. (2012 UNIFORM PLUMBING CODE AND 2013 CALIFORNIA AMENDMENTS)
- 2019 CALIFORNIA FIRE CODE (CFC), PART 9, TITLE 24 C.C.R. (2012 INTERNATIONAL FIRE CODE AND 2013 CALIFORNIA AMENDMENTS)
- 2019 GREEN CALIFORNIA BUILDING STANDARDS, CALGREEN CODE, TITLE 24, PART 11
- 2019 CALIFORNIA REFERENCE STANDARDS, PART 12, TITLE 24 C.C.R.
- TITLE 19 C.C.R., PUBLIC SAFETY, STATE FIRE MARSHAL REGULATIONS

PROJECT NARRATIVE

—

APPLICABLE REGULATIONS

- ADDENDA AND CHANGE ORDER PER SECTION 4-338.
- INSPECTOR APPROVAL BY D.S.A. INSPECTOR AND CONTINUOUS INSPECTION OF WORK PER SECTION 4-333(B) AND 4-342, DUTIES OF PROJECT INSPECTOR.
- TESTS AND TESTING LABORATORY PER SECTION 4-335 (DISTRICT SHALL PAY FOR THE TESTING LABORATORY).
- SPECIAL INSPECTIONS PER SECTION 4-333(C).
- CONTRACTOR SHALL SUBMIT VERIFIED REPORTS PER SECTION 4-336 AND 4-343(C), DUTIES OF THE CONTRACTOR.
- DUTIES OF THE PROFESSIONAL ENGINEER (P.E.) SECTION 4-333(A) AND 4-341.
- GOVERNING CODES TITLES 24, C.C.R.
- A COPY OF TITLE 24 PART 1 AND PART 2 SHALL BE KEPT ON SITE AND AVAILABLE AT ALL TIME DURING CONSTRUCTION.
- D.S.A. SHALL BE NOTIFIED OF START OF CONSTRUCTION PER SECTION 4-331.
- SUPERVISION BY THE DIVISION OF STATE ARCHITECTS (D.S.A.) PER SECTION 4-334.
- THE INTENT OF THE DRAWINGS AND SPECIFICATIONS ARE TO GIVE DIRECTION TO CONSTRUCT THE IMPROVEMENTS SHOWN HEREIN FOR ACCESSIBILITY IN ACCORDANCE WITH TITLE 24, CALIFORNIA CODE OF REGULATIONS. SHOULD ANY CONDITIONS DEVELOP WHICH ARE NOT COVERED BY THE CONTRACT DOCUMENTS, SUCH THAT THE FINISHED WORK WILL NOT COMPLY WITH SAID TITLE 24, CALIFORNIA CODE OF REGULATIONS, A CHANGE ORDER DETAILING AND SPECIFYING THE REQUIRED WORK SHALL BE SUBMITTED TOO, AND APPROVED BY D.S.A. BEFORE PROCEEDING WITH WORK.

DEFERRED APPROVALS

NONE

STATEMENTS:

NONE

GENERAL NOTES

- THE TYPES, LOCATIONS, SIZES, AND/OR DEPTHS OF EXISTING UNDERGROUND UTILITIES AS SHOWN ON THESE PLANS WERE OBTAINED FROM SOURCES OF VARYING RELIABILITY. THE CONTRACTOR IS CAUTIONED THAT ONLY ACTUAL EXCAVATION WILL REVEAL THE TYPES, EXTENT, SIZES, LOCATIONS AND DEPTHS OF SUCH UNDERGROUND UTILITIES. A REASONABLE EFFORT HAS BEEN MADE TO LOCATE AND DELINEATE ALL KNOWN UNDERGROUND UTILITIES. HOWEVER, WARREN CONSULTING ENGINEERS CAN ASSUME NO RESPONSIBILITY FOR THE COMPLETENESS OR ACCURACY OF ITS DELINEATION OF SUCH UNDERGROUND UTILITIES, NOR FOR THE EXISTENCE OF OTHER BURIED OBJECTS OR UTILITIES WHICH MAY BE ENCOUNTERED BUT WHICH ARE NOT SHOWN ON THESE PLANS. THE CONTRACTOR OR ANY SUBCONTRACTOR FOR THIS CONTRACT SHALL NOTIFY MEMBERS OF UNDERGROUND SERVICE ALERT (USA) TWO (2) WORKING DAYS IN ADVANCE OF PERFORMING ANY EXCAVATION WORK BY CALLING TOLL FREE 1-800-227-2600, OR 811.
- WARREN CONSULTING ENGINEERS, INC. (WCE) ASSUMES NO RESPONSIBILITY FOR ERRORS IN PHYSICAL LOCATION OF IMPROVEMENTS, HORIZONTAL OR VERTICAL, IF STAKED BY OTHERS. IN ADDITION, ANY SUCH ERRORS IN PHYSICAL LOCATION MAY AFFECT THE INTENDED DESIGN OF SUCH IMPROVEMENTS AND WCE CANNOT BE HELD RESPONSIBLE FOR SUCH CONDITIONS WHICH ARE A RESULT OF ERRORS IN SURVEYING, OR IMPROPER CONSTRUCTION.
- IF SUBSURFACE CULTURAL RESOURCES, REMAINS, AND/OR ARTIFACTS ARE UNCOVERED DURING PROJECT CONSTRUCTION, ALL WORK IN THE VICINITY SHALL BE STOPPED UNTIL SUCH ITEMS CAN BE ASSESSED BY AN APPROPRIATE MEMBER OF THE COUNTY ENVIRONMENTAL IMPACT SECTION STAFF.
- CONTRACTOR AGREES THAT HE/SHE SHALL ASSUME SOLE AND COMPLETE RESPONSIBILITY FOR JOB SITE CONDITIONS DURING THE COURSE OF CONSTRUCTION OF THIS PROJECT, INCLUDING SAFETY OF ALL PERSONS AND PROPERTY. THAT THIS REQUIREMENT SHALL APPLY CONTINUOUSLY AND SHALL NOT BE LIMITED TO NORMAL WORKING HOURS; AND THAT THE CONTRACTOR SHALL DEFEND, INDEMNIFY AND HOLD THE OWNER AND ENGINEER HARMLESS FROM ANY AND ALL LIABILITY, REAL OR ALLEGED, IN CONNECTION WITH THE PERFORMANCE OF WORK ON THIS PROJECT, EXCEPTING FOR LIABILITY ARISING FROM THE SOLE NEGLIGENCE OF THE OWNER OR ENGINEER.
- THE CONTRACTOR SHALL OBTAIN AN EXCAVATION PERMIT FROM THE STATE OF CALIFORNIA DEPARTMENT OF INDUSTRIAL SAFETY FOR ALL EXCAVATIONS OF 5 FEET OR MORE IN DEPTH.
- IT SHALL BE THE CONTRACTOR'S RESPONSIBILITY TO MAKE ALL NECESSARY PRE-BID AND PRE-CONSTRUCTION SITE INSPECTION, AND/OR OBSERVATIONS ON THE SITE TO PRE-DETERMINE ALL HIS/HER MEANS AND METHODS NECESSARY TO COMPLETE THE IMPROVEMENTS SHOWN ON THESE PLANS AND PER THE PROJECT SPECIFICATIONS. IT IS THE CONTRACTOR'S RESPONSIBILITY TO DETERMINE, AND INCLUDE IN HIS/HER CONTRACT, ALL MEANS AND METHODS NECESSARY TO PERFORM A COMPLETE AND ACCEPTABLE JOB.
- WHERE IMPROVEMENTS LIE WITHIN AN EXISTING DEVELOPED AREA, CONTRACTOR SHALL USE CAUTION WHEN ACCESSING THE SITE THROUGH THESE EXISTING IMPROVEMENTS. IT IS THE CONTRACTOR'S RESPONSIBILITY TO PROTECT ANY SUCH EXISTING IMPROVEMENTS OUTSIDE THE PROJECT BOUNDARY, OR EXISTING IMPROVEMENTS WITHIN THE BOUNDARY WHICH ARE TO REMAIN. PROPER PRECAUTIONS SHALL BE PROVIDED AND MAINTAINED THROUGHOUT CONSTRUCTION. ANY DAMAGE SHALL BE REPAIRED OR REPLACED TO THE SATISFACTION OF THE OWNER.
- IT IS THE RESPONSIBILITY OF THE CONTRACTOR TO KEEP DETAILED RECORDS OF MINOR CHANGES OR ADJUSTMENTS MADE DURING CONSTRUCTION (WHICH WERE NOT FORMALLY ISSUED). UPON PROJECT COMPLETION, THESE RECORDS AND/OR INFORMATION SHALL BE PROVIDED TO THE OWNER AND WARREN CONSULTING ENGINEERS, INC. UNLESS AN OFFICIAL "AS-BUILT" SET OF PLANS IS A REQUIREMENT OF THE CONTRACT. IF AS-BUILT PLANS ARE A REQUIREMENT OF THE CONTRACT, REFER TO SPECIFICATIONS FOR AS-BUILT DELIVERABLE REQUIREMENTS.
- IN VEHICULAR PATHWAYS, EXISTING ASPHALTIC AND/OR CONCRETE SURFACES SHALL BE CUT TO A NEAT AND STRAIGHT LINE, PARALLEL OR PERPENDICULAR TO THE VEHICULAR TRAVELED PATH. THIS IS TYPICALLY THE ROADWAY CENTERLINE, BUT MAY VARY. THAT SAWCUT EDGE SHALL BE PROTECTED FROM DAMAGE DURING CONSTRUCTION SO A CLEAN EDGE REMAINS FOR PATCH BACK. IF EDGE IS DAMAGED, A NEW SAW CUT WILL BE REQUIRED. THE EXPOSED EDGE SHALL BE "TACKED" WITH EMULSION PRIOR TO PAVING.
- NO BURNING OR BLASTING SHALL BE ALLOWED ON SITE UNLESS SPECIFICALLY ADDRESSED ON PLANS, OR SPECIFICALLY APPROVED AND COORDINATED WITH THE ARCHITECT, ENGINEER, AND LOCAL AGENCY OR OTHER ADMINISTRATIVE AUTHORITY.
- SUBGRADE AND RESULTING FINISHED GRADE SHALL BE CONSTRUCTED SMOOTH AND UNIFORM BETWEEN SPOT ELEVATIONS, CONTOURS OR OTHER STRUCTURE ELEVATIONS SHOWN ON GRADING OR OTHER PLANS. NO MOUNDS, RUTS, DEPRESSIONS OR OTHER GRADING DEFICIENCIES WILL BE ALLOWED UNLESS SPECIFICALLY SHOWN ON PLANS.
- ON NEW WATER SYSTEMS, SERVICE LATERALS SHALL BE MADE USING APPROPRIATE "TEE" AND "WYE" FITTINGS. SADDLE TAPS WILL ONLY BE ALLOWED WHEN MAKING CONNECTIONS TO EXISTING WATER MAINS.
- CURING COMPOUND SHALL BE APPLIED IN A CONTINUOUS SOLID WET FLOWING COAT. ANY "SPOTTY" APPLICATIONS SHALL BE RECOATED IMMEDIATELY. APPLICATION SHALL BE INSPECTED BY PROJECT INSPECTOR DURING APPLICATION.
- EMBEDMENT OF FEATURES IN CONCRETE PAVING, CURBS, OR WALLS, SUCH AS SQUARE OR ROUND TUBING, POSTS, OR COLUMNS, STEEL BOLTED PLATES, OR OTHER STRUCTURES, SHALL REQUIRE ADDITIONAL SCORE OR EXPANSION JOINTS TO PREVENT UNCONTROLLED CRACKING. THOSE ADDITIONAL JOINTS MAY OR MAY NOT BE SPECIFICALLY SHOWN ON PLANS BUT SHALL BE PROVIDED BY THE CONTRACTOR.
- EMBEDMENT OF FEATURES IN CONCRETE PAVING, CURBS, OR WALLS, SUCH AS SQUARE OR ROUND TUBING, POSTS, OR COLUMNS, STEEL BOLTED PLATES, OR OTHER STRUCTURES, SHALL REQUIRE A MINOR ADJUSTMENT OF REBAR WITHIN CONCRETE TO ALLOW FOR SUCH STRUCTURE. THAT REBAR ADJUSTMENT MAY NOT BE SPECIFICALLY SHOWN ON PLANS.
- NO MORE THAN 1 GALLON OF WATER PER YARD OF CONCRETE CAN BE ADDED TO THE TRUCK AFTER ARRIVAL TO PROJECT SITE. THE ADDITION OF WATER CAN ONLY BE ADDED UNDER THE SUPERVISION OF THE CONCRETE INSPECTOR OR LABORATORY TECHNICIAN.
- WHEN PUMPING CONCRETE FOR PLACEMENT, ABSOLUTELY NO WATER IS TO BE ADDED TO PUMP HOPPER. ANY WATER ADDED TO HOPPER WILL BE REASON FOR CONCRETE REJECTION AT THE CONTRACTORS EXPENSE.
- ALL CONTRACTION/CONSTRUCTION JOINTS "CJ" SHALL BE 1/4 THE SLAB THICKNESS DEEP, BUT NO LESS THAN 1" FOR CONTROLLING OF CRACKING. CONTRACTOR SHALL EXERCISE CAUTION WHEN FINAL TROWELING OF CONCRETE SO AS NOT TO FILL IN THESE JOINTS WITH CONCRETE CREAM. ANY CRACKS OUTSIDE OF JOINTS WHICH WERE CONSTRUCTED LESS THAN 1" DEEP, SHALL BE CAUSE FOR CONCRETE SLAB(S) TO BE REMOVED AND REPLACE AT CONTRACTORS EXPENSE.
- ANY SCREED BOARDS SET WITHIN CONCRETE SLABS SHALL BE AN "OVERHEAD SCREED" SO THERE IS NO INTERFERENCE WITH THE PLACEMENT AND ALIGNMENT OF SLAB REINFORCING.
- 3-1/2" FELT JOINTS WILL NOT BE ACCEPTED. PROVIDE A FULL 4" FELT JOINT FOR 4" SLAB CONSTRUCTION, AND A 6" FELT JOINT FOR A 6" SLAB CONSTRUCTION.
- SHOULD ANY SHRINKAGE CRACKS OCCUR OUTSIDE OF EITHER THE EXPANSION JOINTS OR CRACK CONTROL JOINTS, THEN THE CONCRETE SLAB SHALL BE SAWCUT AT THE NEAREST JOINTS ON EACH SIDE OF THE CRACK AND THE CONCRETE SECTION SHALL BE REMOVED AND REPLACED. NEW CONCRETE SHALL BE DOWELED INTO EXISTING CONCRETE PER DRAWING DETAIL.
- ALL AREAS DISTURBED BY GRADING OPERATIONS WHETHER SHOWN ON THE DRAWINGS OR NOT SHALL BE HYDRO SEEDING UNLESS OTHERWISE NOTED. HYDRO SEEDING SHALL CONFORM TO LOCAL CITY/COUNTY STANDARDS.
- REPAIR OR PATCHING OF GALVANIZED METALS, SUCH AS AFTER WELDING GALVANIZED COMPONENTS, SHALL BE MADE USING A ZINC COMPOSITION "HOT STICK" APPLICATION PER ASTM A 780-01. GALVANIZING PAINTS WILL NOT BE ALLOWED.

GENERAL PAVING SURFACE NOTES:

- PROVIDE EQUIVALENT OF MEDIUM BROOM FINISH AT SLOPES UP TO 5.99%, TYPICAL. PROVIDE EQUIVALENT OF HEAVY BROOM FINISH AT SLOPES 6% AND GREATER. REFER TO SPECIFICATIONS.
- ALL NEW PEDESTRIAN WALKWAYS (NON-RAMP) SHALL BE SLOPED NO GREATER THAN 2.0%, AND NO LESS THAN 0.75% IN ANY DIRECTION, UNLESS SPECIFICALLY LABELED OTHERWISE. ALL CONCRETE SHALL MEET THE FOLLOWING SLOPE REQUIREMENTS:
 - NO GREATER THAN 5% SLOPE IN THE DIRECTION OF TRAVEL.
 - NO GREATER THAN 2% SLOPE CROSSING THE DIRECTION OF TRAVEL.
 - NO GREATER THAN 2% SLOPE IN ANY DIRECTION IN COURTYARD OR PLAZA AREAS.

SYMBOLS LEGEND

NOTE: NOT ALL SYMBOLS MAY BE USED ON THESE PLANS.

	STORM DRAIN LINE (SIZE AND FLOW SHOWN)		WATER LINE & SIZE
	STORM DRAIN MANHOLE (SSMH)		FIRE LINE & SIZE
	CATCH BASIN (CB)		DOMESTIC WATER LINE & SIZE
	DROP INLET (DI)		RECLAIMED WATER LINE & SIZE
	AREA DRAIN (AD)		IRRIGATION SERVICE LINE & SIZE
	PLANTER DRAIN (PD) OR FLOOR DRAIN (FD)		NON POTABLE WATER LINE & SIZE
	STORM DRAIN CLEANOUT		FIRE SPRINKLER SVC. LINE & SIZE
	ELEVATION		GATE VALVE
	FINISHED FLOOR ELEVATION		WATER METER
	BUILDING PAD ELEVATION		FIRE HYDRANT ASSEMBLY
	CONCRETE SIDEWALK		FIRE DEPARTMENT CONNECTION
	GRADED DIRECTION FOR DRAINAGE FLOW		DETECTOR CHECK VALVE
	SWALE		DOUBLE DETECTOR CHECK VALVE
	SLOPE		REDUCED PRESSURE BACKFLOW PREVENTER
	TREE TO BE REMOVED		BUTTERFLY VALVE
	TREE TO REMAIN		AIR RELEASE VALVE + SIZE
	RETAINING WALL		BLOW-OFF VALVE + SIZE
	OVERLAND RELEASE PATH		POST INDICATOR VALVE

PROPOSED SANITARY SEWER SYMBOLS:

	SANITARY SEWER LINE (SIZE AND FLOW SHOWN)
	SANITARY SEWER MANHOLE (SSMH)
	SEWER CLEANOUT
	SEWER FLUSHER BRANCH

SHEET INDEX

NO.	SHEET DESCRIPTION
CIVIL	
C0.0	COVER SHEET
C0.1	TOPOGRAPHIC SURVEY
C1.1	DEMOLITION PLAN
C2.0	EARTHWORK AND ENGINEERED FILL PLAN
C2.1	GRADING AND CONSTRUCTION PLAN
C2.2	GRADING AND CONSTRUCTION PLAN
C2.3	GRADING AND CONSTRUCTION PLAN
C3.1	DRAINAGE PLAN
C4.1	STRIPING PLAN
C4.2	STRIPING PLAN
C4.3	FENCING PLAN
C5.1	EROSION & SEDIMENT CONTROL PLAN
C5.2	EROSION NOTES AND DETAILS
C6.1	DETAILS AND SECTIONS
C6.2	DETAILS AND SECTIONS
C6.3	DETAILS AND SECTIONS
C6.4	DETAILS AND SECTIONS

OWNER/USER

OWNER: SACRAMENTO CITY UNIFIED SCHOOL DISTRICT
5735 47th Ave. Sacramento, CA 95824-4528
PHONE: (916) 643-9000

DISTRICT CONTACT:
ANTHONY LEA
FACILITIES SUPPORT SERVICES
(916) 264-4075
Anthony-Lea@csusd.edu

ADDITIONAL CONTACTS:
TROY MIETZ
Troy-Mietz@csusd.edu


PROJECT TEAM

CIVIL: WARREN CONSULTING ENGINEERS, INC.
1117 WINFIELD WAY, SUITE 110
EL DORADO HILLS, CA 95762
PHONE: (916) 985-1870
FAX: (916) 985-1877

OWNER:



Sacramento City Unified School District
5735 47th Avenue
Sacramento, CA 95824-4528



REGISTERED PROFESSIONAL ENGINEER
ANTHONY J. TASSANO
NO. C74696
STATE OF CALIFORNIA
6/10/2021

Hubert H. Bancroft Elementary School
2021 Paving

2929 Belmar St.
Sacramento, CA 95826

REVISIONS

NO.	DESCRIPTION

DRAWN: SCALE:

SMN AS NOTED

CHECKED: PROJECT NO.

AT 21-035

DESIGNED: DATE:

SMN/AT 3/26/2021

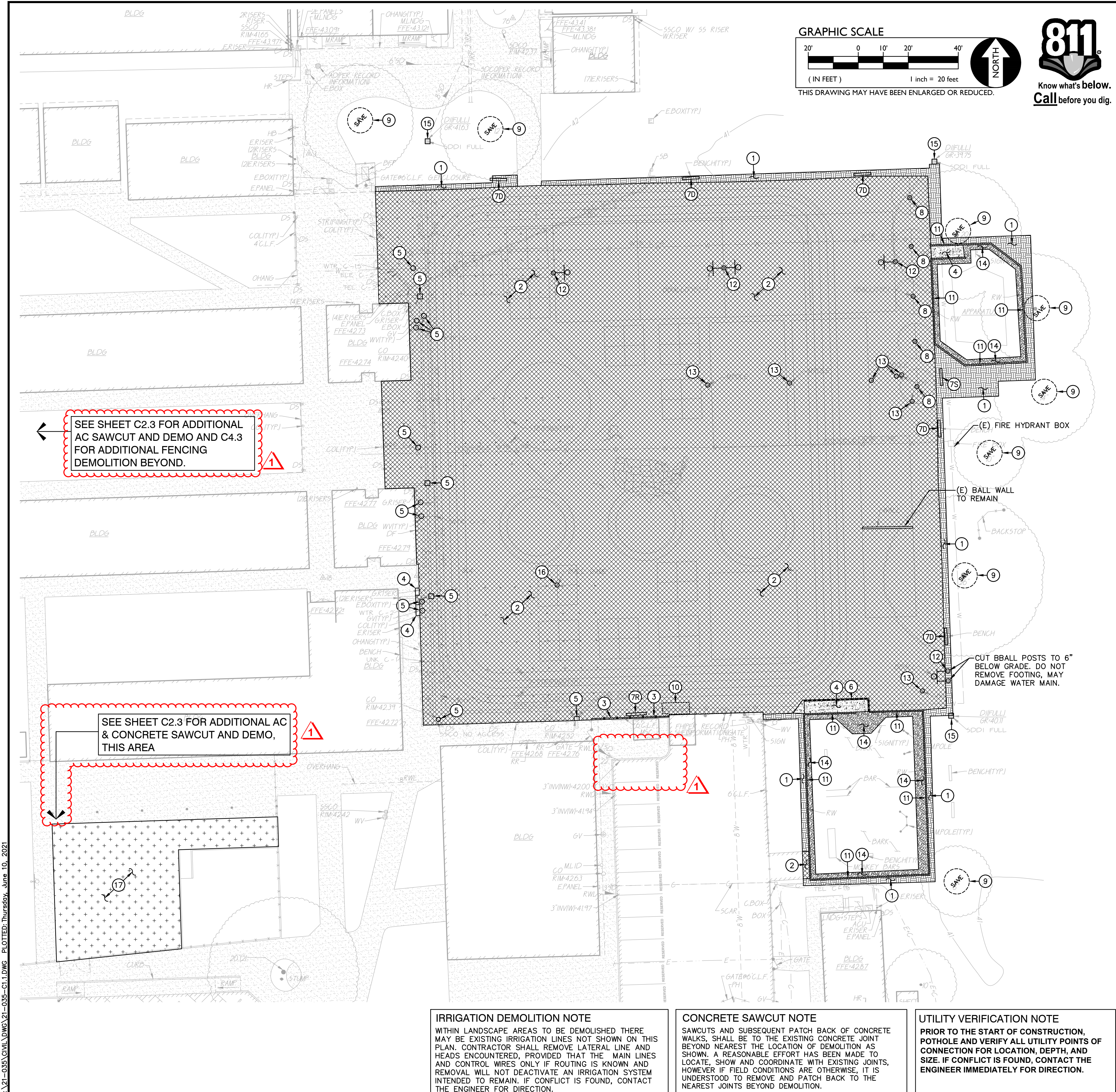
ISSUANCE:

SHEET TITLE:

COVER SHEET

SHEET NO.

C0.0



GRAPHIC SCALE
 20' 0 10' 20' 40'
 (IN FEET) 1 inch = 20 feet
 THIS DRAWING MAY HAVE BEEN ENLARGED OR REDUCED.

811
 Know what's below.
 Call before you dig.

DEMOLITION GENERAL NOTES

- IN THE EVENT THAT ANY UNUSUAL CONDITIONS NOT COVERED BY THE GEOTECHNICAL INVESTIGATION REPORT OR ARE ENCOUNTERED DURING GRADING OPERATIONS THE GEOTECHNICAL ENGINEER AND THE ENGINEER SHALL BE IMMEDIATELY NOTIFIED FOR DIRECTIONS.
- NO BURNING OR BLASTING SHALL BE PERMITTED.
- ADDITIONAL DEMOLITION INFORMATION MAY BE SHOWN ON THE GRADING, DRAINAGE, AND UTILITY PLANS, AND THOSE PLANS PREPARED BY OTHER DISCIPLINES FOR THIS PROJECT.
- ALL DEMOLISHED ITEMS SHALL BE DISPOSED OF OFFSITE AT A SUITABLE, LEGAL, DUMP SITE OR OTHER FACILITY.
- ALL DISPOSED OF MATERIALS SHALL BE RECYCLED IF POSSIBLE.
- THE TYPES, LOCATIONS, SIZES AND/OR DEPTHS OF EXISTING UNDERGROUND UTILITIES AS SHOWN IN THESE PLANS WERE OBTAINED FROM SOURCES OF VARYING RELIABILITY. THE CONTRACTOR IS CAUTIONED THAT ONLY ACTUAL EXCAVATION WILL REVEAL THE TYPES, EXTENT, SIZES, LOCATIONS, AND DEPTHS OF SUCH UNDERGROUND UTILITIES. A REASONABLE EFFORT HAS BEEN MADE TO LOCATE AND DELINEATE ALL KNOWN UNDERGROUND UTILITIES. HOWEVER, WARREN CONSULTING ENGINEERS CAN ASSUME NO RESPONSIBILITY FOR THE COMPLETENESS OR ACCURACY OF ITS DELINEATION OF SUCH UNDERGROUND UTILITIES, NOR FOR THE EXISTENCE OF OTHER BURIED OBJECTS OR UTILITIES WHICH MAY BE ENCOUNTERED BUT WHICH ARE NOT SHOWN ON THESE DRAWINGS. THE CONTRACTOR OR ANY SUBCONTRACTOR FOR THIS CONTRACT SHALL NOTIFY THE DISTRICT TWO (2) WORKING DAYS IN ADVANCE OF PERFORMING ANY EXCAVATION WORK IN ORDER TO VERIFY TO THE GREATEST EXTENT POSSIBLE THE EXISTING UTILITY LINES, CONFLICTS AND PROPOSED UTILITY CONNECTION POINTS.
- THE SCHOOL DISTRICT SHALL HAVE SALVAGE RIGHTS TO ANY DEMOLISHED ITEMS SHOWN HEREON. THE CONTRACTOR SHALL GIVE THE DISTRICT NOTICE 7 DAYS PRIOR TO THE START OF DEMOLITION. THE DISTRICT SHALL MOVE ANY RETAINED ITEMS OUT OF THE CONTRACTOR'S WORK AREA, UNLESS ANOTHER ARRANGEMENT IS MADE WITH THE CONTRACTOR. ANY REMAINING ITEMS BECOME THE PROPERTY OF THE CONTRACTOR AND SHALL BE REMOVED FROM THE SITE. ANY ITEMS NOT SHOWN FOR REMOVAL SHALL REMAIN AND SHALL BE PROTECTED FROM DAMAGE DURING CONSTRUCTION TO A REASONABLE EXTEND.
- EXISTING UTILITY STRUCTURES IN AREAS OF NEW PAVING SHALL BE REMOVED AND REINSTALLED AT NEW GRADE UNLESS SPECIFICALLY NOTED OTHERWISE.
- ITEMS OUTSIDE THE LIMITS OF DEMOLITION SHALL REMAIN AND BE PROTECTED FROM DAMAGE DURING CONSTRUCTION.
- CONTRACTOR SHALL COMPLY WITH CHAPTER 33 OF THE 2014 CFC, "FIRE SAFETY DURING CONSTRUCTION AND DEMOLITION" AT ALL TIMES DURING CONSTRUCTION.
- ALL DEMOLITION SHALL BE APPROPRIATELY SUPPORTED AND REINFORCED DURING REMOVAL TO PREVENT INJURY FROM FALLING, PROJECTILE, OR OTHERWISE MOVING DEBRIS OR OTHER DELETERIOUS MATERIAL. ONSITE SAFETY WITHIN THE LIMITS OF WORK IS THE CONTRACTORS SOLE RESPONSIBILITY.
- SAWCUTS AND SUBSEQUENT PATCH BACK OF CONCRETE WALKS, SHALL BE TO THE EXISTING CONCRETE JOINT BEYOND NEAREST THE LOCATION OF DEMOLITION AS SHOWN. A REASONABLE EFFORT HAS BEEN MADE TO LOCATE, SHOW AND COORDINATE WITH EXISTING JOINTS, HOWEVER IF FIELD CONDITIONS ARE OTHERWISE, IT IS UNDERSTOOD TO REMOVE AND PATCH BACK TO THE NEAREST JOINTS BEYOND DEMOLITION.
- CONTRACTOR SHALL AVOID DAMAGE TO EXISTING PLANTING AND IRRIGATION ALONG EDGES OF DEMOLITION AND NEW PAVEMENT. CONTRACTOR SHALL REPAIR ANY DAMAGE, TO INCLUDE NEW IRRIGATION LINES, NEW HEADS, NEW BARK/MULCH AND NEW SOD TURF WHERE NECESSARY.

DEMOLITION NOTES

- NOTE: NOT ALL NOTES MAY BE USED ON THIS SHEET.
- AND/OR LEGEND DEMOLITION NOTES
- REMOVE ALL PLANTS, SHRUBS, EXISTING VEGETATION, AND IRRIGATION SYSTEMS. REFER TO EARTHWORK SPECIFICATIONS FOR ADDITIONAL SITE CLEARING REQUIREMENTS. SEE GENERAL IRRIGATION NOTE, THIS SHEET.
 - SAWCUT AND REMOVE EXISTING ASPHALT PAVING AND BASE ROCK TO ALLOW FOR NEW WORK. SAWCUTS SHALL BE NEAT STRAIGHT LINES. IF EDGES BROKEN DURING CONSTRUCTION, PERFORM NEW SAWCUTS JUST PRIOR TO NEW PAVING.
 - REMOVE EXISTING CHAIN LINK OR WOOD FENCING AND GATES AS SHOWN TO ALLOW FOR NEW WORK. POSTS TO REMAIN. SALVAGE MESH & HARDWARE FOR RE-INSTALLATION.
 - REMOVE EXISTING CONCRETE PAVING AND BASE ROCK. WHERE SAWCUTS ARE NECESSARY, THEY SHALL BE A NEAT STRAIGHT LINE. CUT SHALL BE MADE AT NEAREST EXISTING JOINT TO LOCATION SHOWN.
 - REMOVE EXISTING UTILITY BOX. PROTECT UTILITIES. PROVIDE NEW TRAFFIC RATED UTILITY BOX OF SAME SIZE AND APPROPRIATE FOR UTILITY, REFER TO SPECIFICATIONS. SET FLUSH WITH PROPOSED FINISHED GRADE.
 - REMOVE EXISTING CONCRETE CURB / CURB GUTTER.
 - REMOVE AND SALVAGE EXISTING "BUDDY" BENCH FOR RE-INSTALLATION.
 - DEMOLISH AND REMOVE EXISTING BENCH.
 - REMOVE AND SALVAGE EXISTING MEMORIAL BENCH FOR RE-INSTALLATION.
 - REMOVE EXISTING TEATHERBALL POST TO INCLUDE CONCRETE BASE. BACKFILL WITH 95% COMPACTED CLASS II AB IN 6" LIFTS. SEE PAVING PLAN FOR NEW SURROUNDING PAVING.
 - EXISTING TREE TO REMAIN AND BE PROTECTED FROM DAMAGE. PROVIDE PROTECTIVE FENCING IF NEEDED.
 - REMOVE EXISTING WOOD RAMP STRUCTURE.
 - REMOVE EXISTING PLAYGROUND APPARATUS CURB.
 - REMOVE EXISTING BASKETBALL GOALPOST TO INCLUDE CONCRETE BASE. BACKFILL WITH 95% COMPACTED CLASS II AB IN 6" LIFTS. SEE PAVING PLAN FOR NEW SURROUNDING PAVING.
 - REMOVE STEEL POST TO INCLUDE CONCRETE BASE. BACKFILL WITH 95% COMPACTED CLASS II AB IN 6" LIFTS. SEE PAVING PLAN FOR NEW SURROUNDING PAVING.
 - PULL BACK EXISTING PLAYGROUND MULCH AND FILTER FABRIC (IF EXISTS) TO ALLOW FOR INSTALLATION OF NEW SUBDRAIN AND CONCRETE SEATWALL. SEE GRADING PLAN FOR ADDITIONAL INFORMATION. PATCH MULCH WHEN COMPLETE.
 - FLUSH AND CLEAR EXISTING STORM DRAIN PIPE. REMOVE FROM DOWNSIDE INLET BY VAC-TRUCK, DO NOT FLUSH SEDIMENT FURTHER DOWNSIDE INTO CITY/COUNTY STORM DRAIN SYSTEM. FLUSHING SHALL OCCUR AT THE END OF CONSTRUCTION TO ENSURE NEW SEDIMENT GENERATED BY CONSTRUCTION IS REMOVED.
 - REMOVE EXISTING FUNNELBALL POST TO INCLUDE CONCRETE BASE. BACKFILL WITH 95% COMPACTED CLASS II AB IN 6" LIFTS. SEE PAVING PLAN FOR NEW SURROUNDING PAVING.
 - CLEAN, CRACK FILL AND PATCH EXISTING ASPHALT PAVING TO ALLOW FOR APPLICATION OF SEALCOAT. REFER TO SPECIFICATIONS SECTION 32 12 00.

SEE SHEET C2.3 FOR ADDITIONAL AC SAWCUT AND DEMO AND C4.3 FOR ADDITIONAL FENCING DEMOLITION BEYOND.

SEE SHEET C2.3 FOR ADDITIONAL AC & CONCRETE SAWCUT AND DEMO, THIS AREA

IRRIGATION DEMOLITION NOTE
 WITHIN LANDSCAPE AREAS TO BE DEMOLISHED THERE MAY BE EXISTING IRRIGATION LINES NOT SHOWN ON THIS PLAN. CONTRACTOR SHALL REMOVE LATERAL LINE AND HEADS ENCOUNTERED, PROVIDED THAT THE MAIN LINES AND CONTROL WIRES ONLY IF ROUTING IS KNOWN AND REMOVAL WILL NOT DEACTIVATE AN IRRIGATION SYSTEM INTENDED TO REMAIN. IF CONFLICT IS FOUND, CONTACT THE ENGINEER FOR DIRECTION.

CONCRETE SAWCUT NOTE
 SAWCUTS AND SUBSEQUENT PATCH BACK OF CONCRETE WALKS, SHALL BE TO THE EXISTING CONCRETE JOINT BEYOND NEAREST THE LOCATION OF DEMOLITION AS SHOWN. A REASONABLE EFFORT HAS BEEN MADE TO LOCATE, SHOW AND COORDINATE WITH EXISTING JOINTS, HOWEVER IF FIELD CONDITIONS ARE OTHERWISE, IT IS UNDERSTOOD TO REMOVE AND PATCH BACK TO THE NEAREST JOINTS BEYOND DEMOLITION.

UTILITY VERIFICATION NOTE
 PRIOR TO THE START OF CONSTRUCTION, POT HOLE AND VERIFY ALL UTILITY POINTS OF CONNECTION FOR LOCATION, DEPTH, AND SIZE. IF CONFLICT IS FOUND, CONTACT THE ENGINEER IMMEDIATELY FOR DIRECTION.

DSA



OWNER:
Sacramento City Unified School District
 Sacramento City Unified School District
 5735 47th Avenue
 Sacramento, CA 95824-4528



Hubert H. Bancroft Elementary School 2021 Paving

2929 Belmar St.
 Sacramento, CA 95826

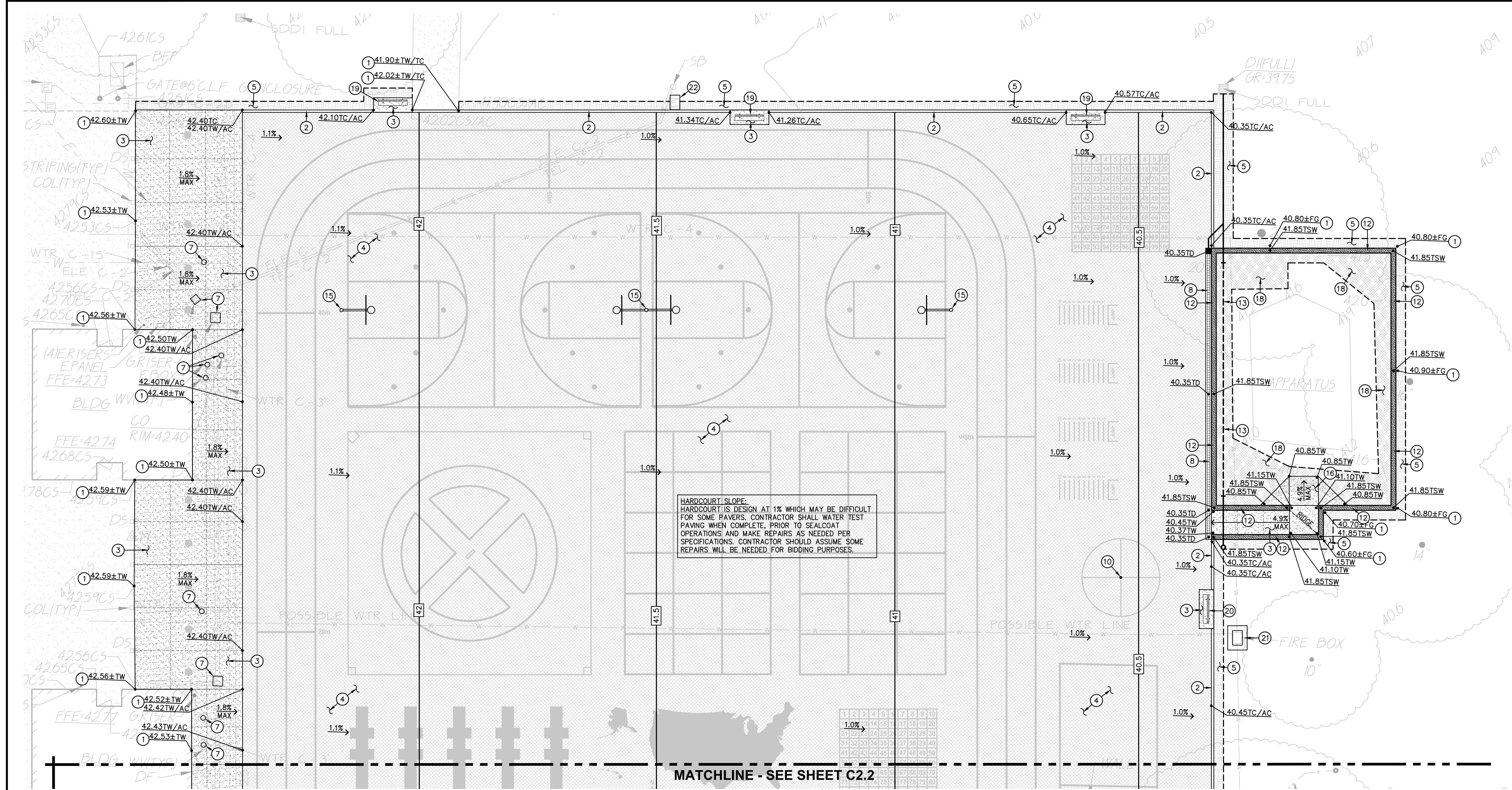
REVISIONS	
NO.	DESCRIPTION

DRAWN: SMN	SCALE: AS NOTED
CHECKED: AT	PROJECT NO. 21-035
DESIGNED: SMN/AT	DATE: 3/26/2021
ISSUANCE:	

SHEET TITLE:
Demolition Plan

SHEET NO.

C1.1



1 GRADING PLAN

SCALE 1" = 10'-0"

GRADING NOTES

1. MATCH EXISTING GRADE/ELEVATION. WHEN MATCHING NEW SLABS TO EXISTING, DOWEL SLABS PER THE DETAIL PROVIDED AT 24" O.C.
2. CONSTRUCT FLUSH SUBGRADE BARRIER CONCRETE CURB PER THE DETAIL PROVIDED.
3. CONSTRUCT CONCRETE SIDEWALK. PLACE 5" PCC WITH #4 REBAR AT 24" O.C.E.W. OVER SUBGRADE PREPARED IN ACCORDANCE WITH SHEET C2.0. REFER TO SPECIFICATIONS SECTION 32 16 00 FOR MATERIALS AND CONSTRUCTION. REFER TO SECTION 31 00 00 AND 31 32 00 FOR SUBGRADE PREPARATION. SEE ALSO, TYPICAL DETAILS PROVIDED.
4. PLACE 3" TYPE B (3/8" MAX) ASPHALT PAVING OVER 5" COMPACTED CLASS II AB OVER SUBGRADE PREPARED IN ACCORDANCE WITH SHEET C2.0. REFER TO SPECIFICATIONS SECTION 32 12 00 FOR MATERIALS AND CONSTRUCTION. REFER TO SECTION 31 00 00 AND 31 32 00 FOR SUBGRADE PREPARATION. SEALCOAT IS NOT REQUIRED ON THIS AREA.
5. PATCH BACK EXISTING LANDSCAPING AND IRRIGATION ALONG EDGES OF WORK TO MATCH EXISTING CONDITIONS. REPAIR ALL LATERALS AND REPLACE OR RELOCATE HEADS AS NEEDED FOR COVERAGE. PROVIDE NEW SOD IN LAWN AREAS OVER AMENDED AND PREPARED SOIL.

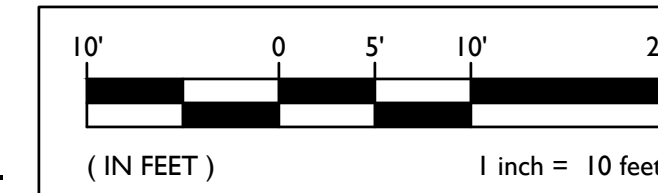
6. MATCH NEW CONCRETE FLATWORK ELEVATION TO EXISTING DOORWAY THRESHOLD ELEVATION. ENSURE TRANSITION SHALL NOT EXCEED 1/4", OR 1/2" WITH APPROPRIATE TAPER PER 2016 CBC 11B-303. REMOVE ALL NON-COMPLIANT THRESHOLDS AND RUBBER TRANSITIONS AND REPLACE WITH NEW ALUMINUM COMPLIANT THRESHOLD. NO RUBBER TRANSITIONS ALLOWED. TRIM DOOR BOTTOMS IF NEEDED. CONTRACT ENGINEER IF CONFLICT FOUND.
7. REMOVE EXISTING UTILITY BOX AND PROVIDE NEW CONCRETE BOX OF SAME SIZE AND APPROPRIATE FOR UTILITY AND SET FLUSH WITH PROPOSED FINISHED GRADE.
8. TRENCH DRAIN WITH ACCESSIBLE GRATING. SEE DRAINAGE PLAN.
9. CONSTRUCT 8" WIDE CONCRETE RETAINING CURB AROUND EXERCISE APPARATUS PER THE DETAILS PROVIDED.
10. NEW FUNNELBALL GOALPOST WITH CUSTOM PAINTED POST. SEE DETAIL PROVIDED AND STRIPING PLAN FOR COURT STRIPING.
11. REMOVE AND RE-INSTALL EXISTING MEMORIAL BENCH. SAND DOWN WORN WOOD PLANKS, PRIME (1 COAT) AND RE-PAINT (2 COATS) WITH COMMERCIAL GRADE EXTERIOR ACRYLIC PAINT, SHERWIN WILLIAMS EMERALD RAIN REFRESH OR APPROVED EQUAL. MATCH EXISTING COLOR. RE-INSTALL SIM. TO DETAIL PROVIDED.

12. CONSTRUCT 12" WIDE CONCRETE SEATWALL WITH ANTI-SKATE TOOLING PER THE DETAILS PROVIDED.
13. INSTALL PERFORATED SUBDRAIN WITH FILTER FABRIC AND DRAIN ROCK AT EDGE OF PLAY APPARATUS PER THE DETAIL PROVIDED. PLACE BACK FIBER AND GRADE LEVEL. PROVIDE NEW FIBER AS NEEDED. SEE DRAINAGE PLAN.
14. CONSTRUCT 12" WIDE CONCRETE APRON AT BUILDING OR OTHER STRUCTURE PER THE DETAIL PROVIDED.
15. NEW BASKETBALL GOALPOST WITH CUSTOM PAINTED POST, SINGLE OR DOUBLE AS SHOWN. SEE DETAIL PROVIDED AND STRIPING PLAN FOR COURT STRIPING.
16. CONSTRUCT PLAY APPARATUS ACCESS PER THE DETAIL PROVIDED.
17. NOT USED.
18. FOLLOWING SEATWALL CONSTRUCTION, PLACE NEW FILTER FABRIC BENEATH FIBER FILL. PLACE/RAKE FIBER BACK IN PLACE AND GRADE LEVEL. PROVIDE ADDITIONAL FIBER AS NEEDED.

19. PROVIDE AND INSTALL NEW 6' LONG BENCH PER THE DETAIL PROVIDED.
20. PLACE BACK EXISTING SALVAGED "BUDDY BENCH" ON NEW CONCRETE PAD.
21. EXCAVATE AND POUR 12" WIDE, 6" DEEP CONCRETE COLLAR AROUND EXISTING FIRE HYDRANT BOX WITH (1) #4 BAR.
22. REMOVE EXISTING IRRIGATION BOX AND CONSTRUCT NEW TRAFFIC RATED ELECTRICAL BOX WITH CONCRETE COLLAR PER THE DETAIL PROVIDED.
23. REMOVE EXISTING QUICK COUPLER, CUT BACK WATER LINE TO TEE OR VALVE AND CAP.
24. CONSTRUCT SLAB EDGE CURB PER THE DETAIL PROVIDED.



GRAPHIC SCALE



THIS DRAWING MAY HAVE BEEN ENLARGED OR REDUCED.

DSA



OWNER:



Sacramento City Unified School District
5735 47th Avenue
Sacramento, CA 95824-4528



Hubert H. Bancroft Elementary School 2021 Paving

2929 Belmar St.
Sacramento, CA 95826

REVISIONS

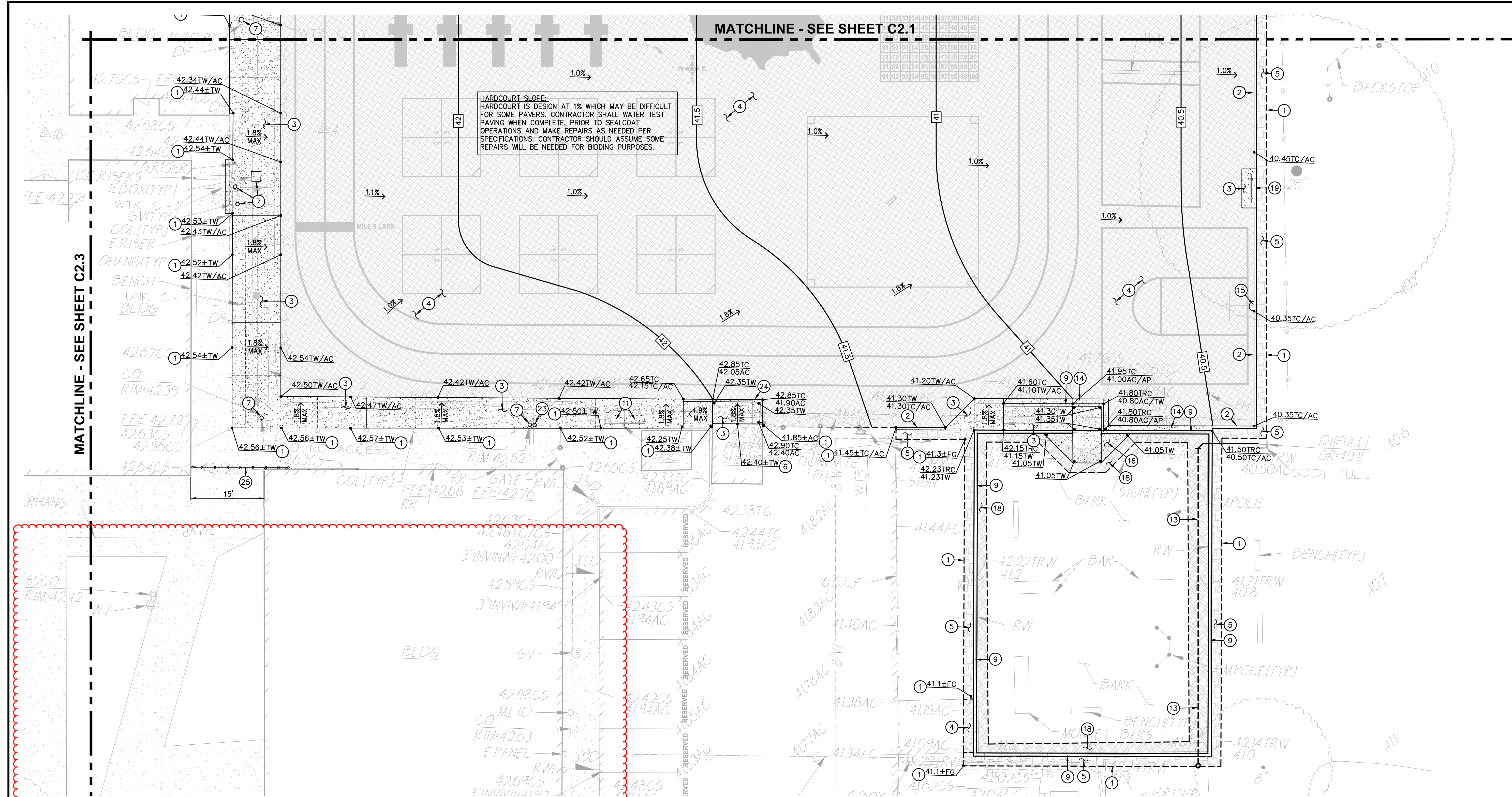
NO.	DESCRIPTION

DRAWN: SMN	SCALE: AS NOTED
CHECKED: AT	PROJECT NO. 21-035
DESIGNED: SMN/AT	DATE: 3/26/2021

SHEET TITLE:
Grading and Construction Plan

SHEET NO.
C2.1

FILENAME: \\21-035\CIVIL\DWG\21-035-C2.LDWG PLOTTED: Thursday, June 10, 2021



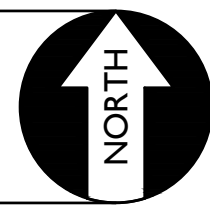
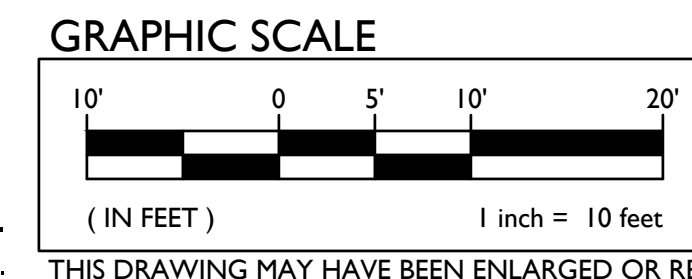
1 GRADING PLAN

- GRADING NOTES**
- MATCH EXISTING GRADE/ELEVATION. WHEN MATCHING NEW SLABS TO EXISTING, DOWEL SLABS PER THE DETAIL PROVIDED AT 24" O.C.
 - CONSTRUCT FLUSH SUBGRADE BARRIER CONCRETE CURB PER THE DETAIL PROVIDED.
 - CONSTRUCT CONCRETE SIDEWALK. PLACE 5" PCC WITH #4 REBAR AT 24" O.C.E.W. OVER SUBGRADE PREPARED IN ACCORDANCE WITH SHEET C2.0. REFER TO SPECIFICATIONS SECTION 32 16 00 FOR MATERIALS AND CONSTRUCTION. REFER TO SECTION 31 00 00 AND 31 32 00 FOR SUBGRADE PREPARATION. SEE ALSO, TYPICAL DETAILS PROVIDED.
 - PLACE 3" TYPE B (3/8" MAX) ASPHALT PAVING OVER 5" COMPACTED CLASS II AB OVER SUBGRADE PREPARED IN ACCORDANCE WITH SHEET C2.0. REFER TO SPECIFICATIONS SECTION 32 12 00 FOR MATERIALS AND CONSTRUCTION. REFER TO SECTION 31 00 00 AND 31 32 00 FOR SUBGRADE PREPARATION. SEALCOAT IS NOT REQUIRED ON THIS AREA.
 - PATCH BACK EXISTING LANDSCAPING AND IRRIGATION ALONG EDGES OF WORK TO MATCH EXISTING CONDITIONS. REPAIR ALL LATERALS AND REPLACE OR RELOCATE HEADS AS NEEDED FOR COVERAGE. PROVIDE NEW SOD IN LAWN AREAS OVER AMENDED AND PREPARED SOIL.

- MATCH NEW CONCRETE FLATWORK ELEVATION TO EXISTING DOORWAY THRESHOLD ELEVATION. ENSURE TRANSITION SHALL NOT EXCEED 1/4", OR 1/2" WITH APPROPRIATE TAPER PER 2016 CBC 11B-303. REMOVE ALL NON-COMPLIANT THRESHOLDS AND RUBBER TRANSITIONS AND REPLACE WITH NEW ALUMINUM COMPLIANT THRESHOLD. NO RUBBER TRANSITIONS ALLOWED. TRIM DOOR BOTTOMS IF NEEDED. CONTRACT ENGINEER IF CONFLICT FOUND.
- REMOVE EXISTING UTILITY BOX AND PROVIDE NEW CONCRETE BOX OF SAME SIZE AND APPROPRIATE FOR UTILITY AND SET FLUSH WITH PROPOSED FINISHED GRADE.
- TRENCH DRAIN WITH ACCESSIBLE GRATING. SEE DRAINAGE PLAN.
- CONSTRUCT 8" WIDE CONCRETE RETAINING CURB AROUND EXERCISE APPARATUS PER THE DETAILS PROVIDED.
- NEW FUNNELBALL GOALPOST WITH CUSTOM PAINTED POST. SEE DETAIL PROVIDED AND STRIPING PLAN FOR COURT STRIPING.
- REMOVE AND RE-INSTALL EXISTING MEMORIAL BENCH. SAND DOWN WORN WOOD PLANKS, PRIME (1 COAT) AND RE-PAINT (2 COATS) WITH COMMERCIAL GRADE EXTERIOR ACRYLIC PAINT, SHERWIN WILLIAMS EMERALD RAIN REFRESH OR APPROVED EQUAL. MATCH EXISTING COLOR. RE-INSTALL SIM. TO DETAIL PROVIDED.

- CONSTRUCT 12" WIDE CONCRETE SEATWALL WITH ANTI-SKATE TOOLING PER THE DETAILS PROVIDED.
- INSTALL PERFORATED SUBDRAIN WITH FILTER FABRIC AND DRAIN ROCK AT EDGE OF PLAY APPARATUS PER THE DETAIL PROVIDED. PLACE BACK FIBER AND GRADE LEVEL. PROVIDE NEW FIBER AS NEEDED. SEE DRAINAGE PLAN.
- CONSTRUCT 12" WIDE CONCRETE APRON AT BUILDING OR OTHER STRUCTURE PER THE DETAIL PROVIDED.
- NEW BASKETBALL GOALPOST WITH CUSTOM PAINTED POST, SINGLE OR DOUBLE AS SHOWN. SEE DETAIL PROVIDED AND STRIPING PLAN FOR COURT STRIPING.
- CONSTRUCT PLAY APPARATUS ACCESS PER THE DETAIL PROVIDED.
- NOT USED.
- FOLLOWING SEATWALL CONSTRUCTION, PLACE NEW FILTER FABRIC BENEATH FIBER FILL, PLACE/RAKE FIBER BACK IN PLACE AND GRADE LEVEL, PROVIDE ADDITIONAL FIBER AS NEEDED.
- PROVIDE AND INSTALL NEW 6' LONG BENCH PER THE DETAIL PROVIDED.
- PLACE BACK EXISTING SALVAGED "BUDDY BENCH" ON NEW CONCRETE PAD.
- EXCAVATE AND POUR 12" WIDE, 6" DEEP CONCRETE COLLAR AROUND EXISTING FIRE HYDRANT BOX WITH (1) #4 BAR.
- REMOVE EXISTING IRRIGATION BOX AND CONSTRUCT NEW TRAFFIC RATED ELECTRICAL BOX WITH CONCRETE COLLAR PER THE DETAIL PROVIDED.
- REMOVE EXISTING QUICK COUPLER, CUT BACK WATER LINE TO TEE OR VALVE AND CAP.
- CONSTRUCT SLAB EDGE CURB PER THE DETAIL PROVIDED.
- PROVIDE AND INSTALL 16' ROLLING GATE WITH SLIDE RAILING MOUNTED TO WALL PER THE DETAIL PROVIDED.
- CLEAN, CRACK FILL AND PATCH EXISTING ASPHALT PAVING TO ALLOW FOR SEALCOAT. PLACE 2 COATS PAVEMENT SEALER PER SPECIFICATION SECTION 32 12 00.

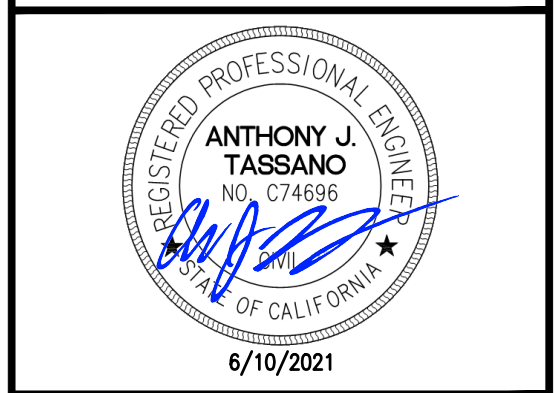
SCALE 1" = 10'-0"



DSA



OWNER:
Sacramento City Unified School District
 Sacramento City Unified School District
 5735 47th Avenue
 Sacramento, CA 95824-4528



Hubert H. Bancroft Elementary School 2021 Paving
 2929 Belmar St.
 Sacramento, CA 95826

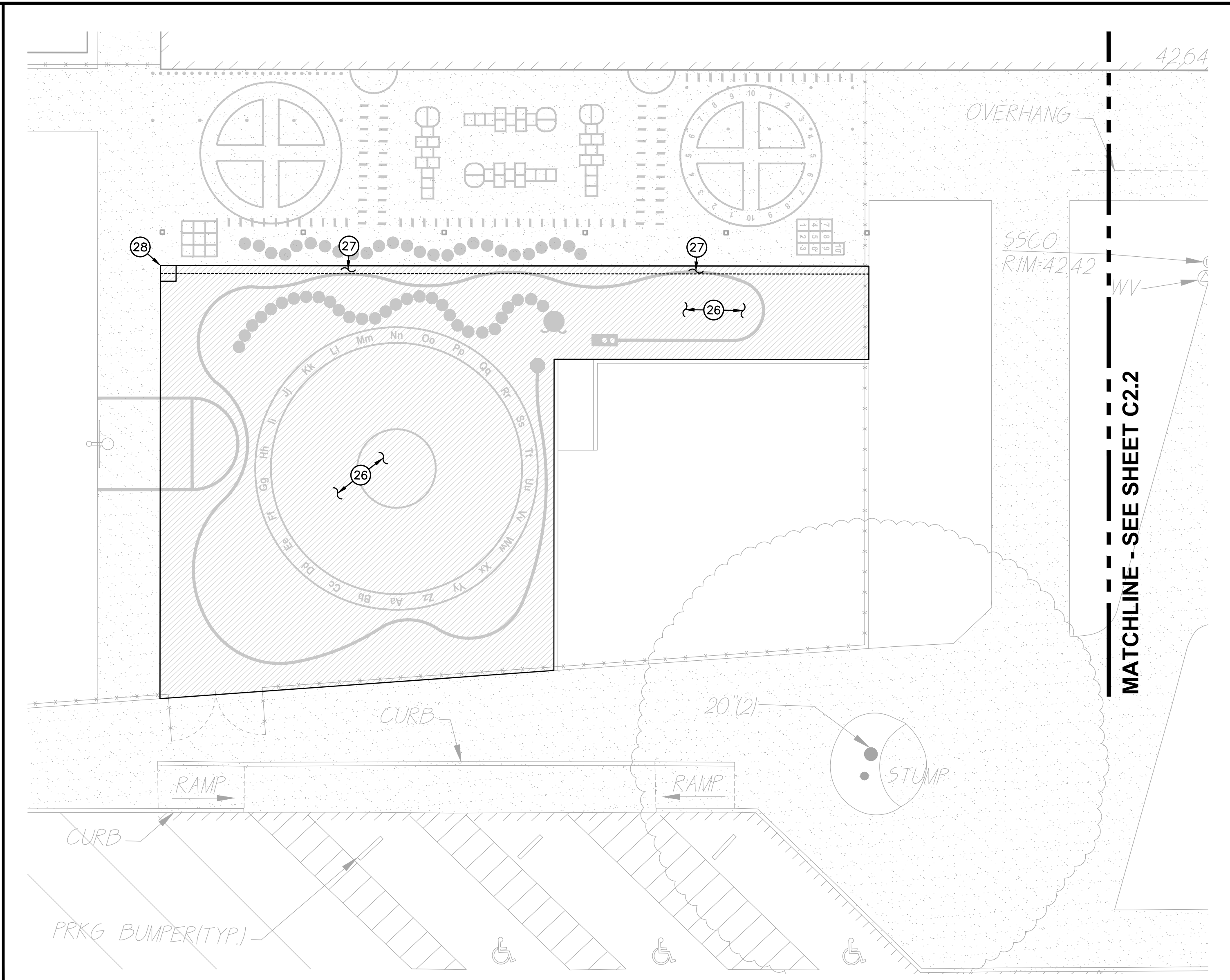
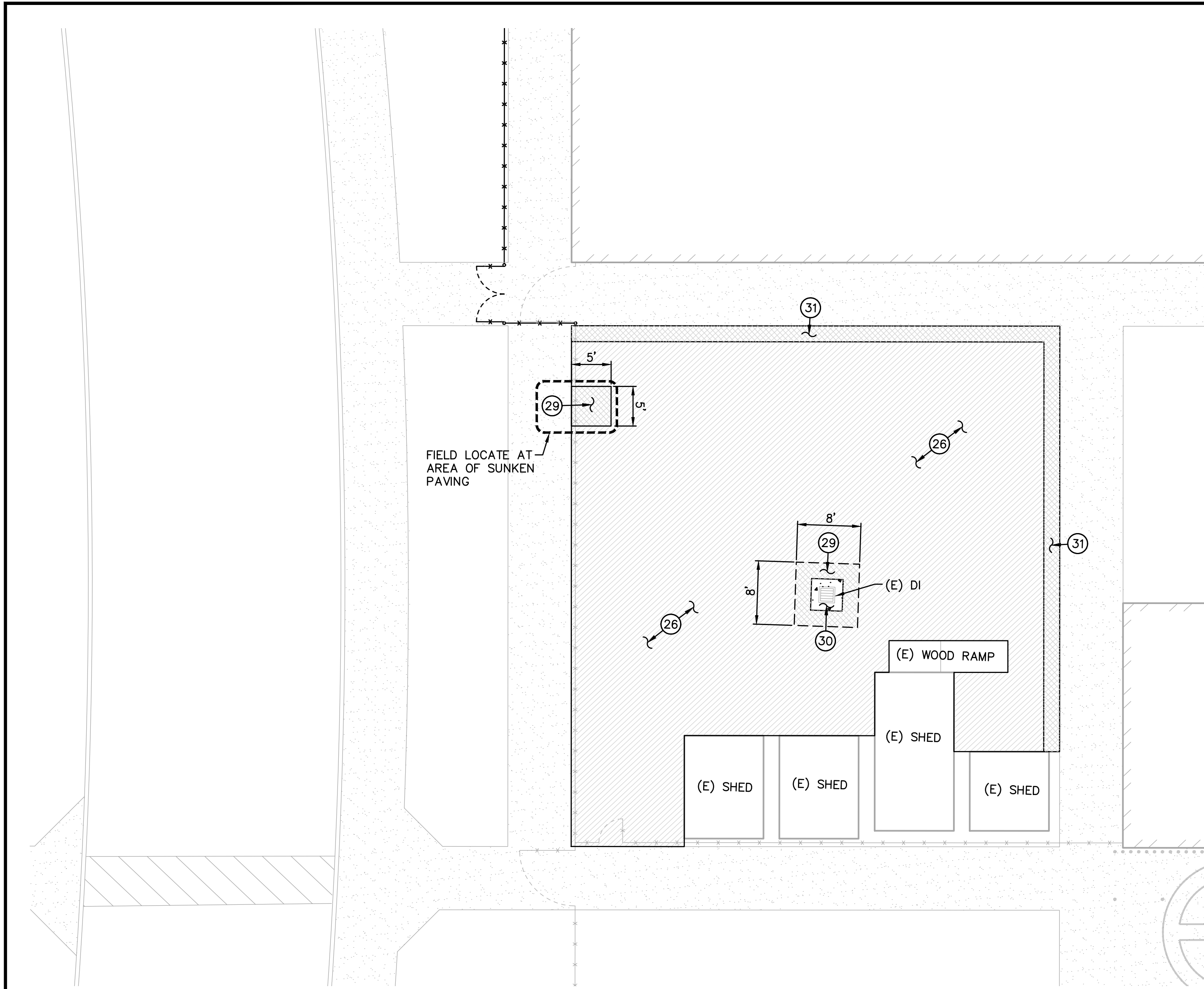
REVISIONS	
NO.	DESCRIPTION

DRAWN: SMN	SCALE: AS NOTED
CHECKED: AT	PROJECT NO. 21-035
DESIGNED: SMN/AT	DATE: 3/26/2021
ISSUANCE:	

SHEET TITLE:
Grading and Construction Plan

SHEET NO.
C2.2

FILENAME: \\21-035-C2.LDWG PLOTTED: Thursday, June 10, 2021



1 SEALCOAT & CONSTRUCTION PLAN SCALE 1" = 10'-0"

2 SEALCOAT & CONSTRUCTION PLAN SCALE 1" = 10'-0"

- GRADING NOTES**
- 27. PRIOR TO SEAL COAT, LIGHTLY SURFACE GRIND EXISTING PAVING ALONG EDGE OF PAVING TO A FLUSH CONDITION TO REMOVE "LIP" TRIPPING HAZARD.
 - 28. SAWCUT AND REMOVE 24"x24" SQUARE OF PAVING AND EXISTING CONCRETE AND HOSE BIB. CUT AND CAP WATER PIPE. EXCAVATE BASE AND SOIL AS NEEDED FOR NEW SCETION. PATCH BACK WITH 3" AC OVER 8" CLASS II AB ON SCARIFIED AND RE-COMPACTED SUBGRADE.
 - 29. SAWCUT AND REMOVE 24" WIDE STRIP OF ASPHALT AROUND DRAIN INLET AS SHOWN. REMOVE AC, BASE ROCK AND SOIL AS NEEDED FOR NEW SECTION. PLACE 3" TYPE B (3/8" MAX) ASPHALT PAVING OVER 8" COMPACTED CLASS II AB OVER 8" DEEP SCARIFIED AND RE-COMPACTED SUBGRADE. (10" TOTAL SECTION)
 - 30. EXCAVATE AND POUR 12" WIDE, 6" DEEP CONCRETE COLLAR OVER 5" CLASS II AB ON 8" DEEP SCARIFIED AND RE-COMPACTED SUBGRADE. (10" TOTAL SECTION)
 - 31. SAWCUT AND REMOVE 24" WIDE STRIP OF ASPHALT PAVING ALONG EDGE OF HARDCOURT. RE-COMPACT BASE ROCK AND PLACE 3" TYPE B (3/8" MAX) ASPHALT PAVING OVER EXISTING BASE. PROVIDE SEALCOAT THIS AREA.

DSA



OWNER:

 Sacramento City Unified School District
 5735 47th Avenue
 Sacramento, CA 95824-4528



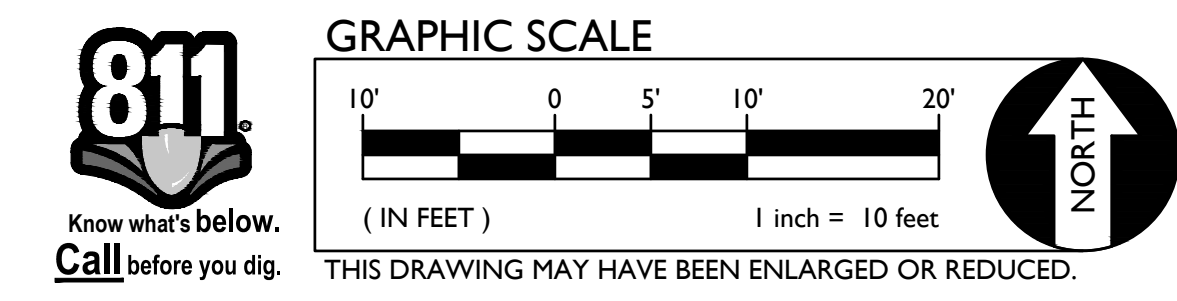
Hubert H. Bancroft
 Elementary School
 2021 Paving
 2929 Belmar St.
 Sacramento, CA 95826

REVISIONS	
NO.	DESCRIPTION

DRAWN: SMN	SCALE: AS NOTED
CHECKED: AT	PROJECT NO. 21-035
DESIGNED: SMN/AT	DATE: 3/26/2021
ISSUANCE:	

SHEET TITLE:
 Grading and Construction Plan

SHEET NO.



FILENAME: I:\21-035\CIVIL\DWG\21-035-C2.LDW PLOTTED: Thursday, June 10, 2021

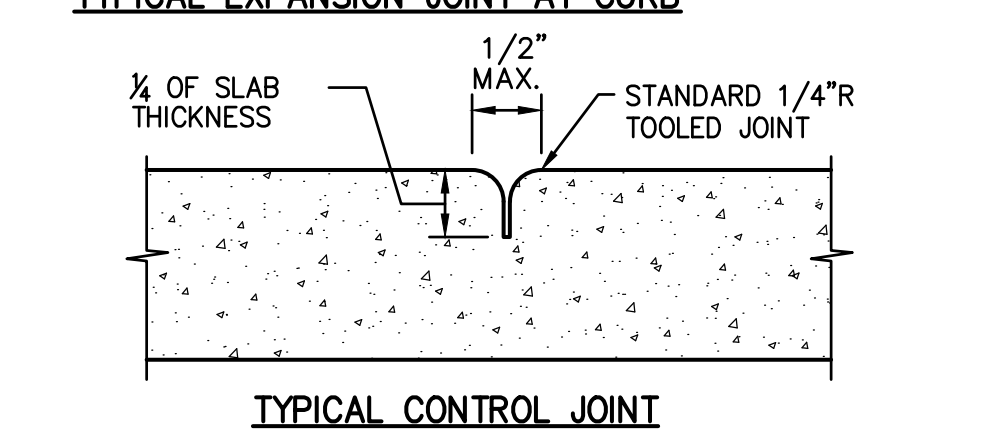
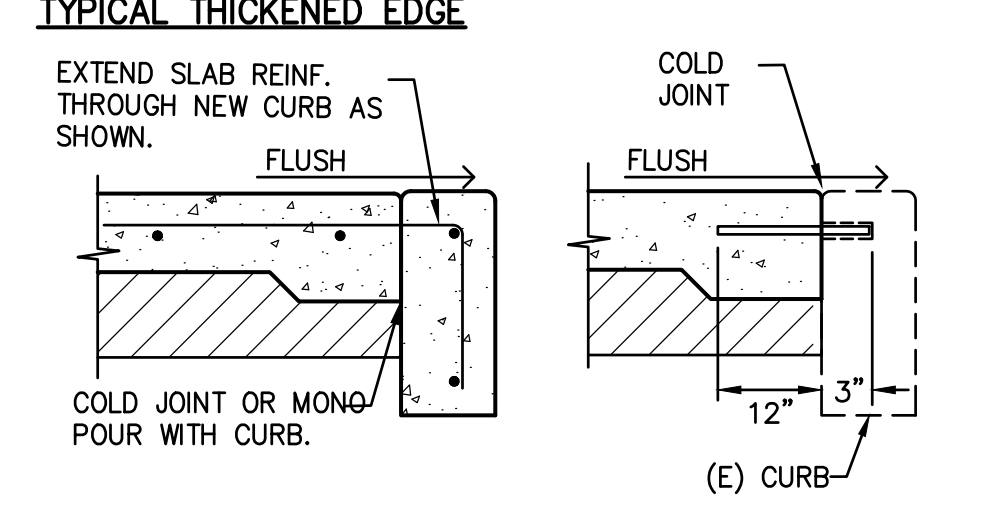
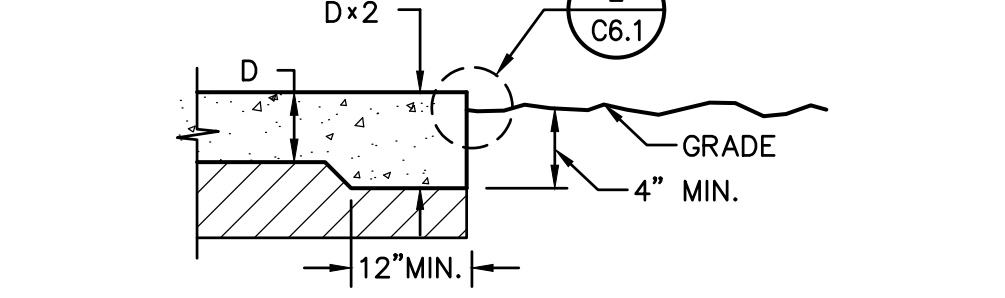
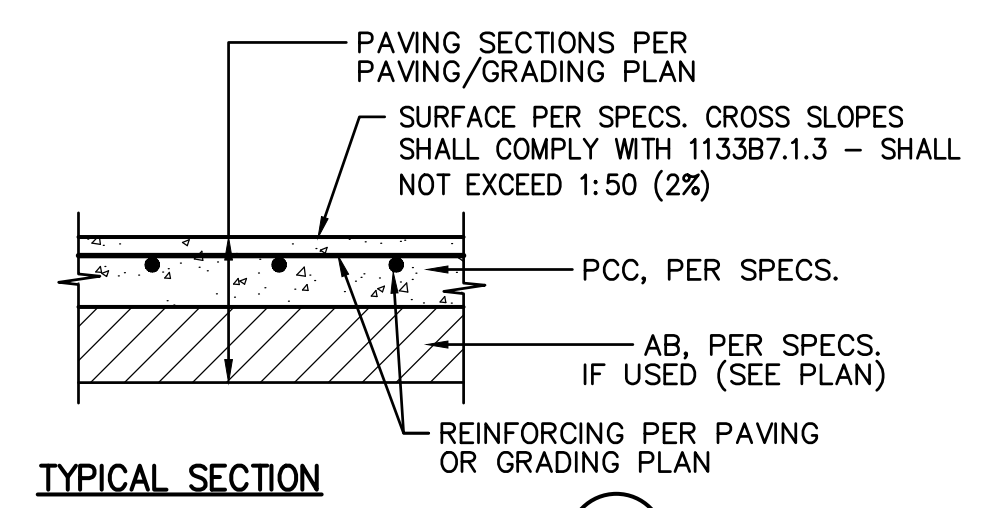
REVISIONS	
NO.	DESCRIPTION

DRAWN: SMN	SCALE: AS NOTED
CHECKED: AT	PROJECT NO. 21-035
DESIGNED: SMN/AT	DATE: 3/26/2021
ISSUANCE:	

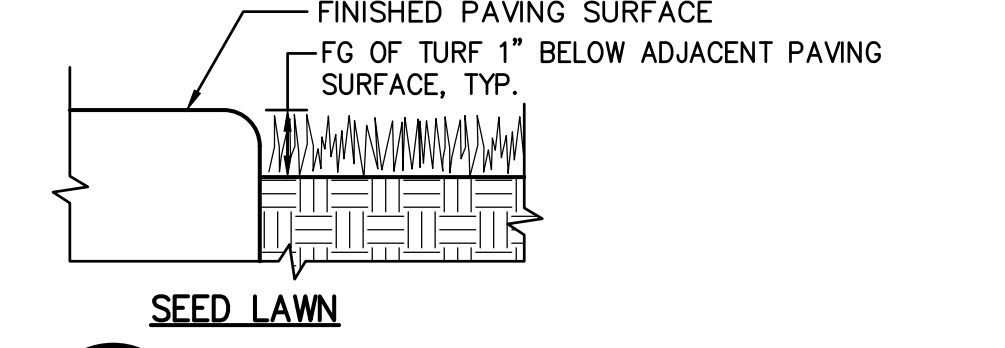
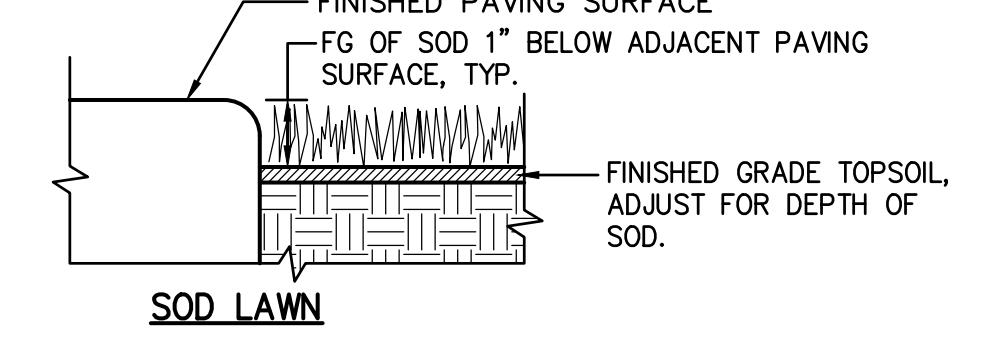
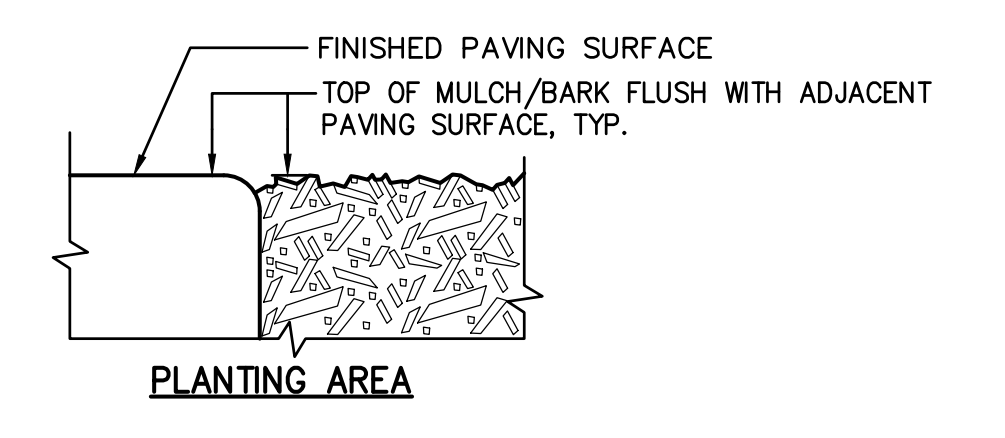
SHEET TITLE:
Site Details and Sections

SHEET NO.

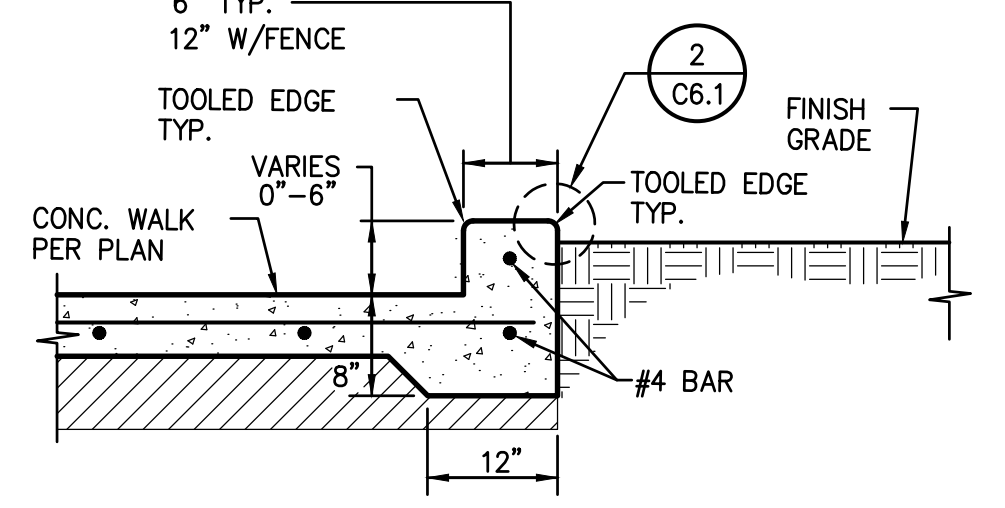
C6.1



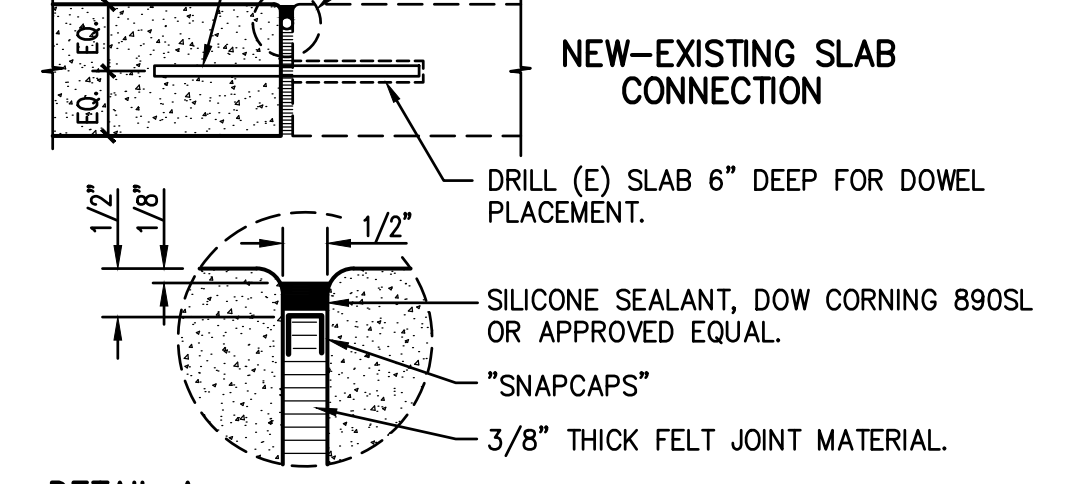
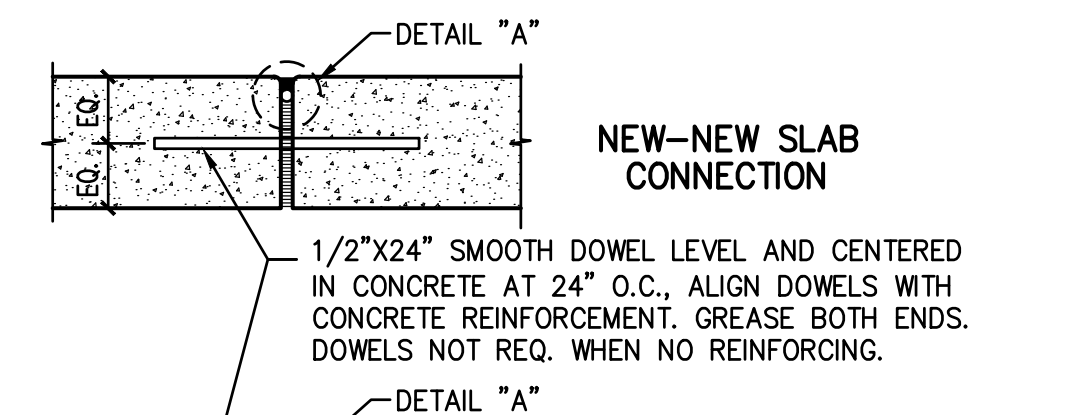
1 CONCRETE SIDEWALK NO SCALE



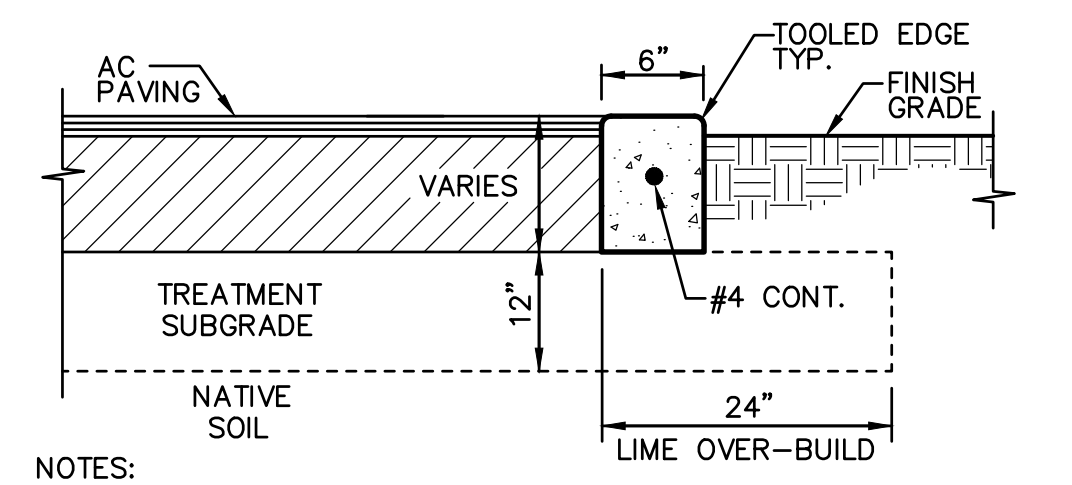
2 PAVING EDGE DETAIL NO SCALE



3 WALKWAY EDGE CURB NO SCALE

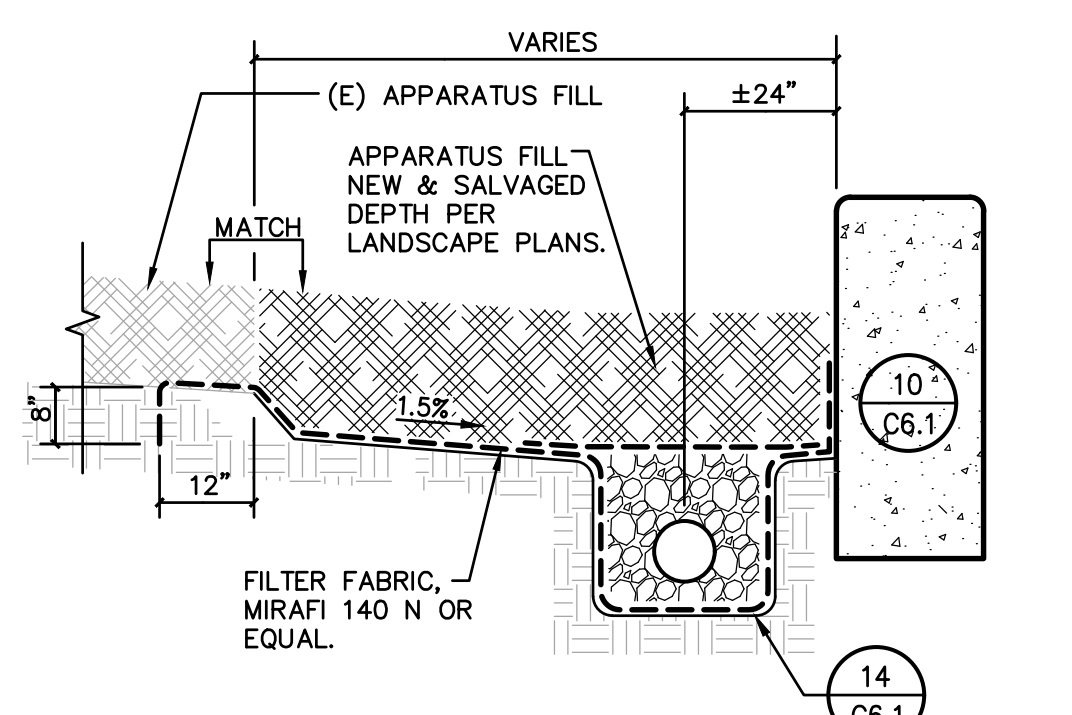


4 EXPANSION JOINT NO SCALE

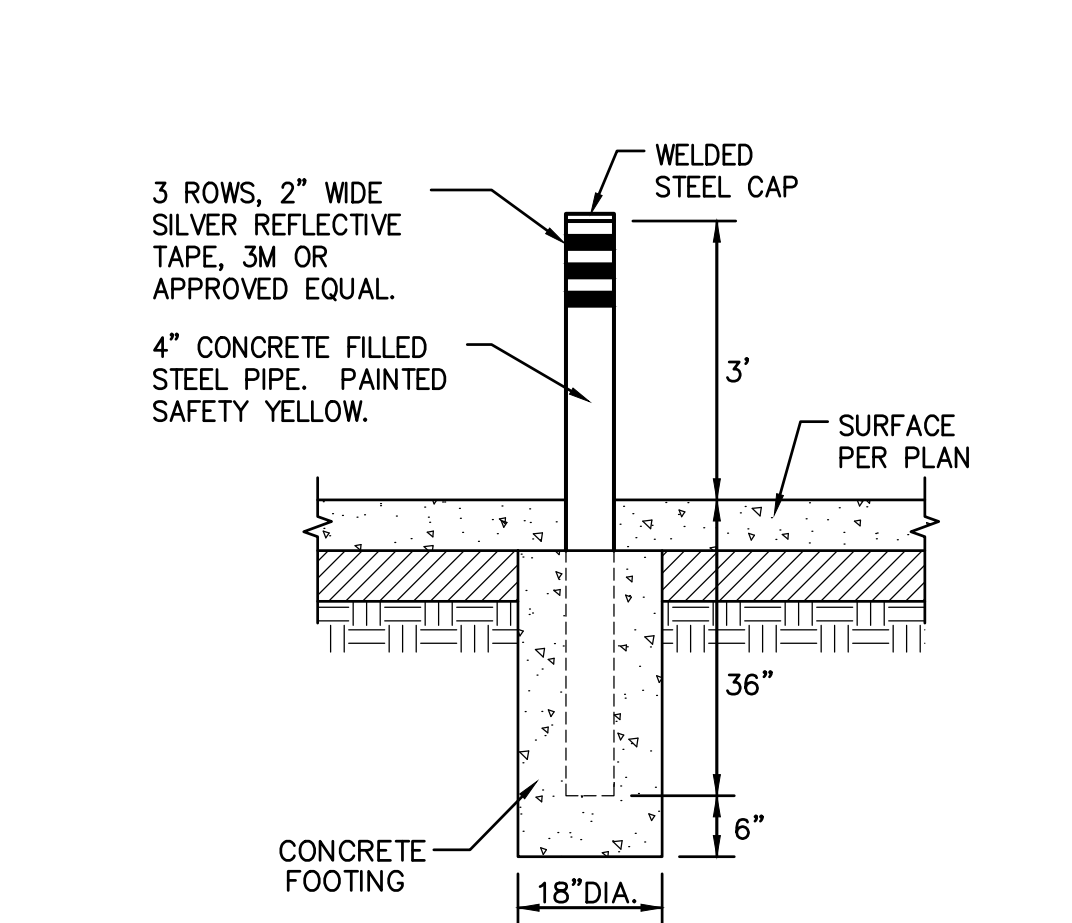


NOTES:
1. PROVIDE FELT EXPANSION JOINTS (E.J.) AT 60 FEET O.C. PROVIDE CONTROL JOINTS AT 10 FEET O.C., EXCEPT WHEN PLACING ADJACENT TO CONCRETE WALKS THE EXPANSION JOINTS SHALL ALIGN WITH THE EXPANSION JOINTS SHOWN FOR THE CONCRETE WALKS.
2. AT E.J. USE 1/2" x 24" SMOOTH DOWELS, ALIGN WITH REBAR, GREASE 1/2 THE LENGTH BEFORE CONCRETE PLACEMENT.

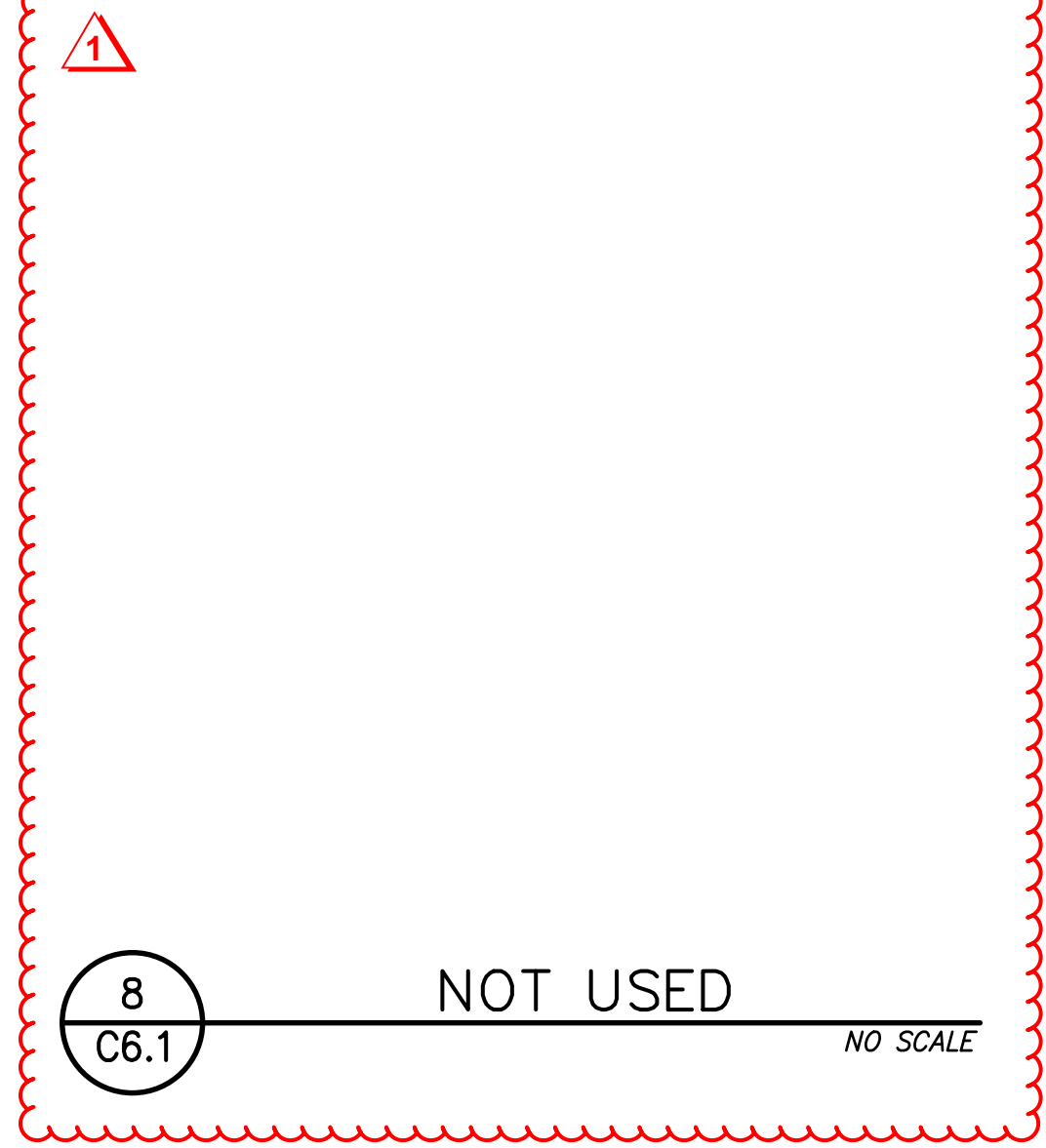
5 SUBGRADE BARRIER CURB NO SCALE



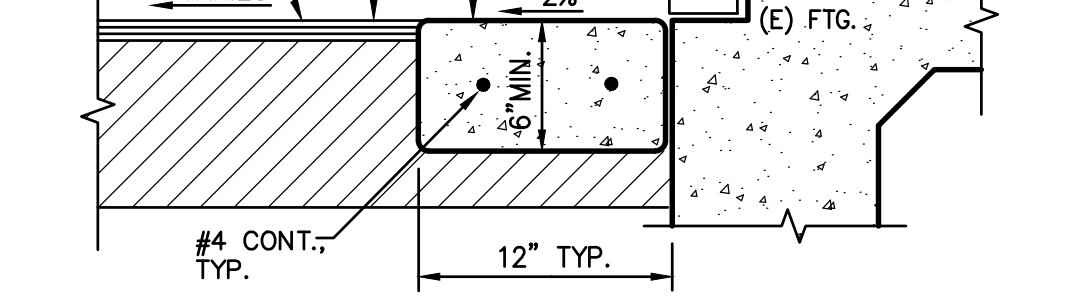
6 APPARATUS SUBDRAIN NO SCALE



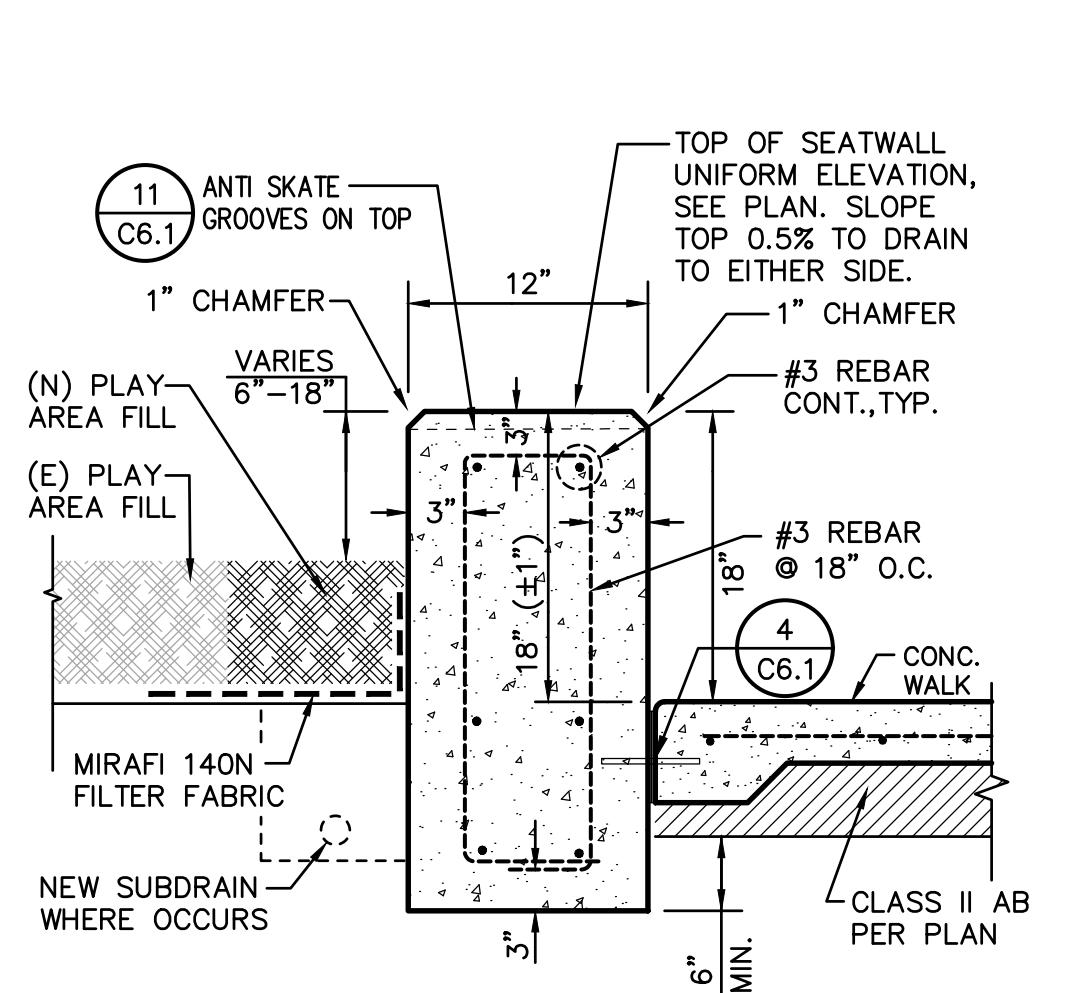
7 PIPE BOLLARD NO SCALE



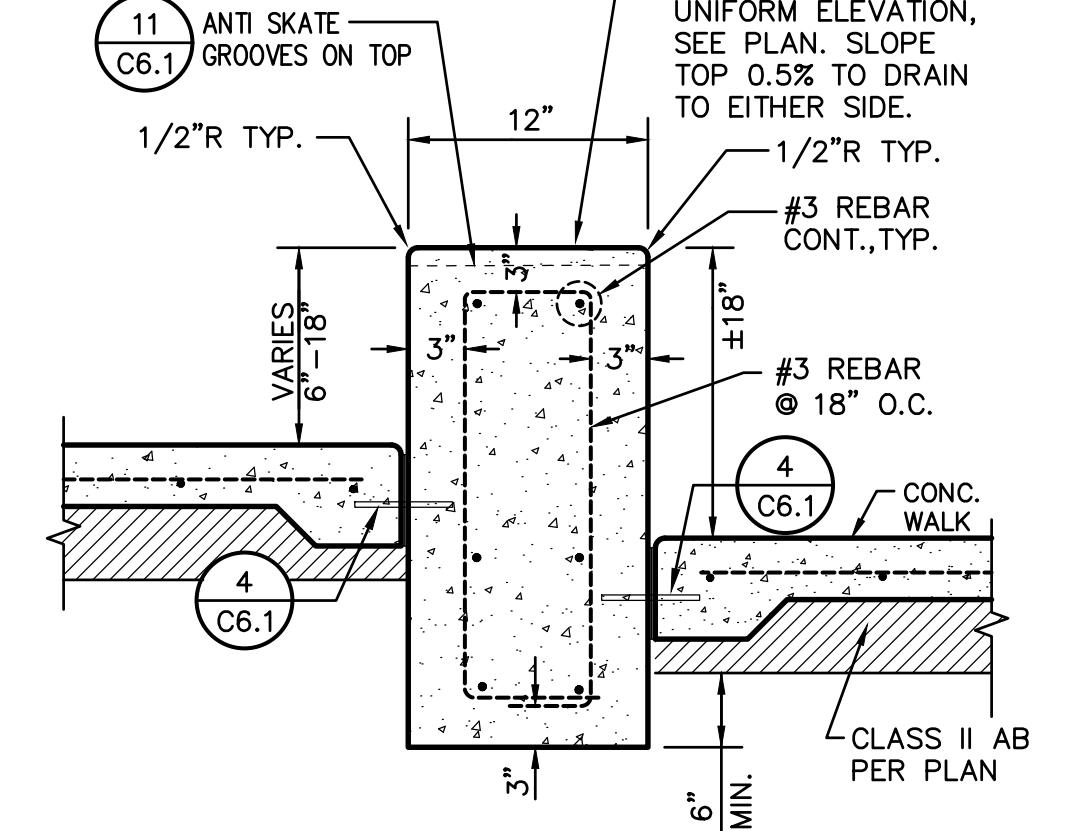
8 NOT USED NO SCALE



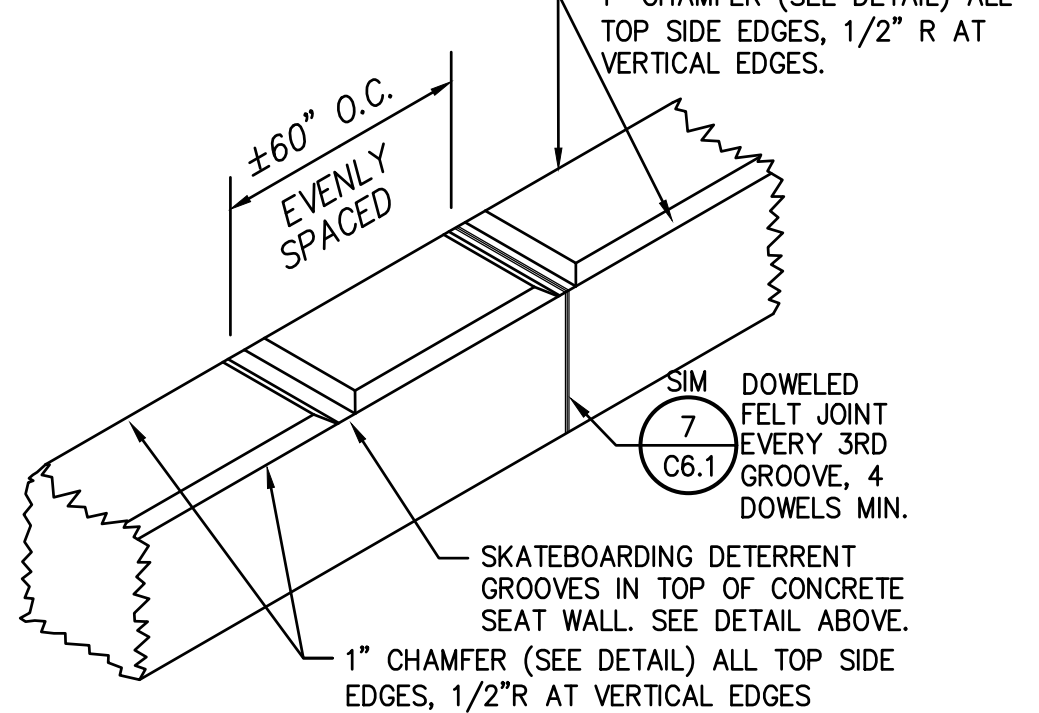
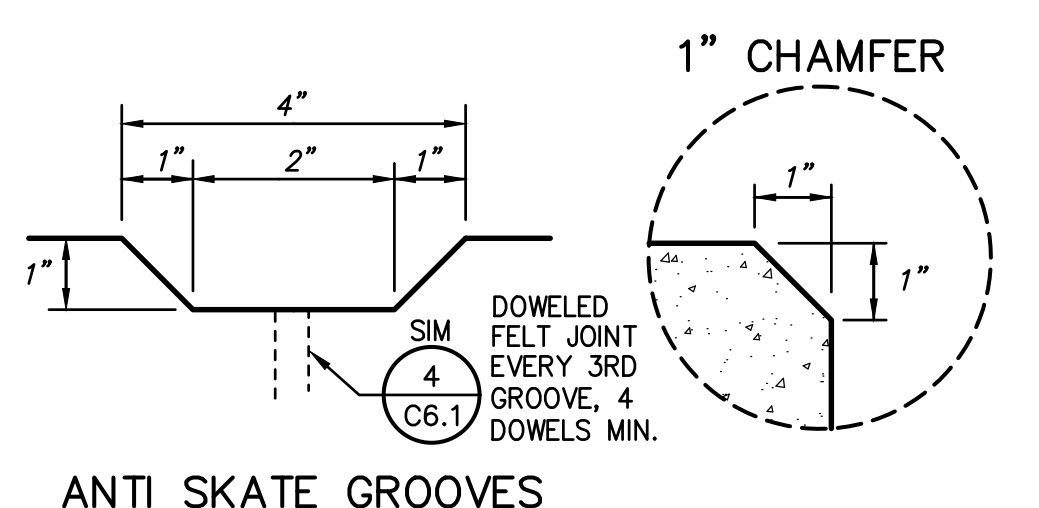
9 CONCRETE APRON NO SCALE



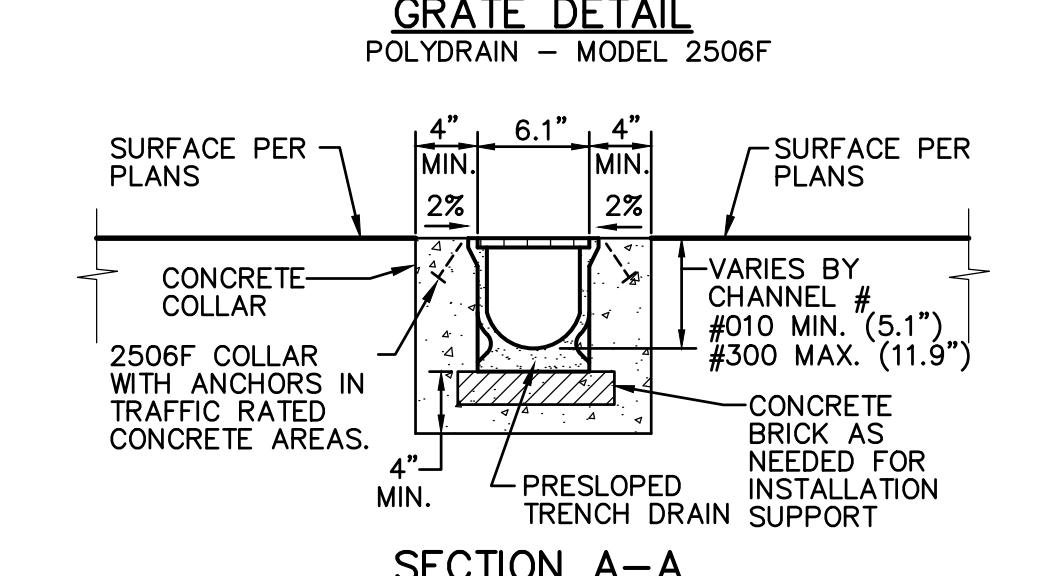
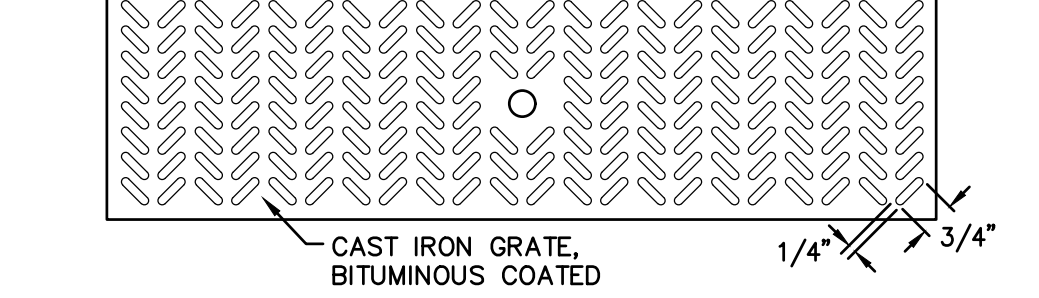
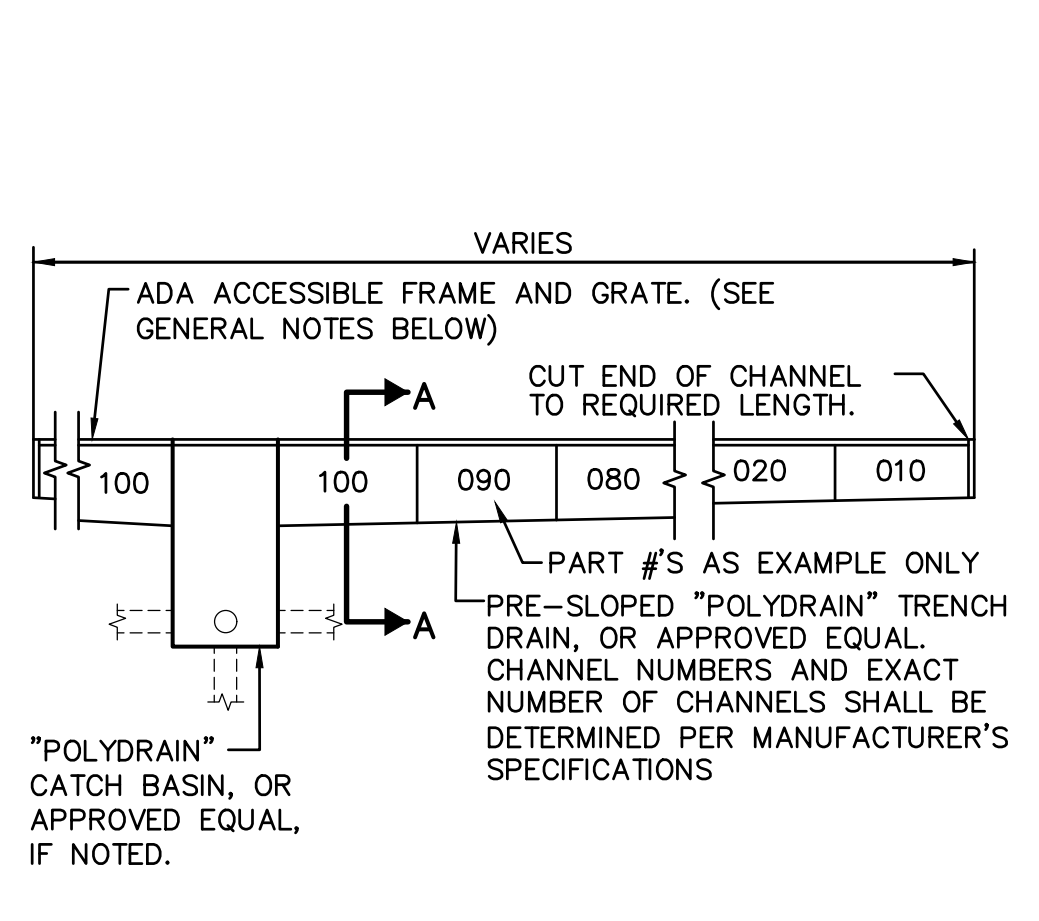
10 CONCRETE SEATWALL NO SCALE



10 CONCRETE SEATWALL NO SCALE

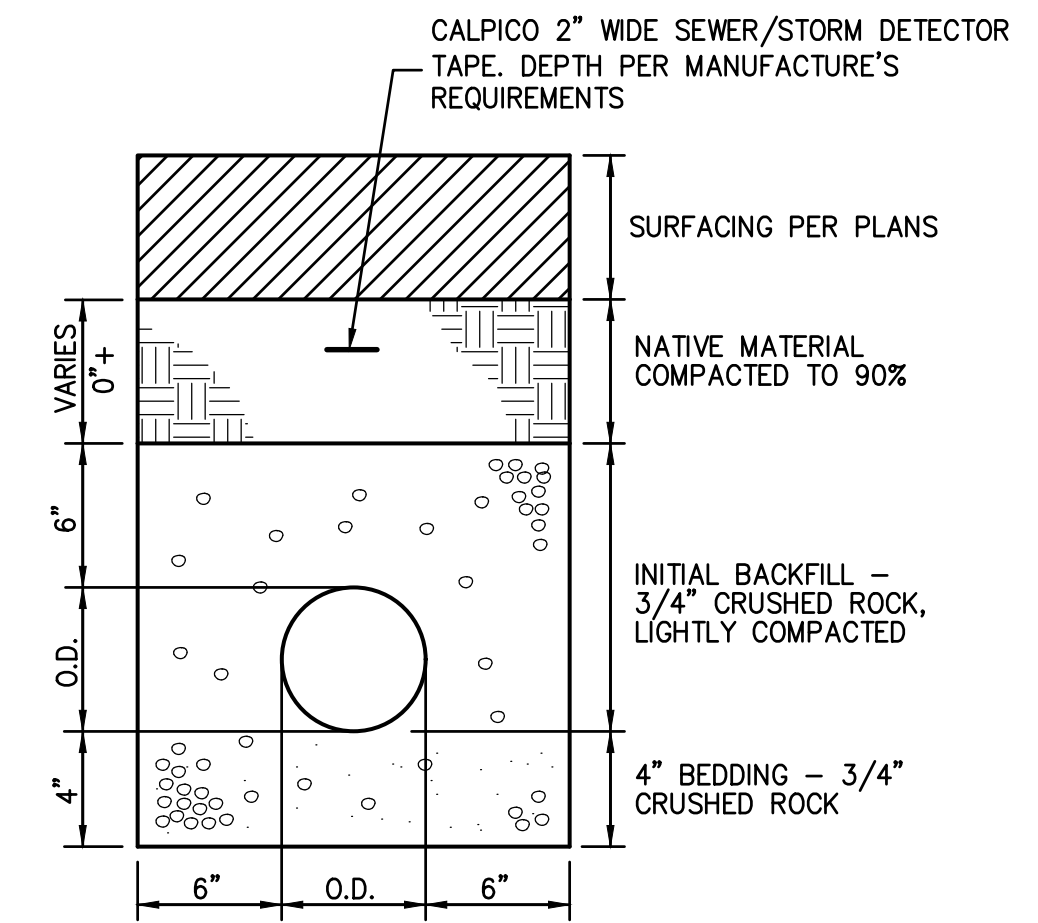


11 ANTI SKATE GROOVES NO SCALE

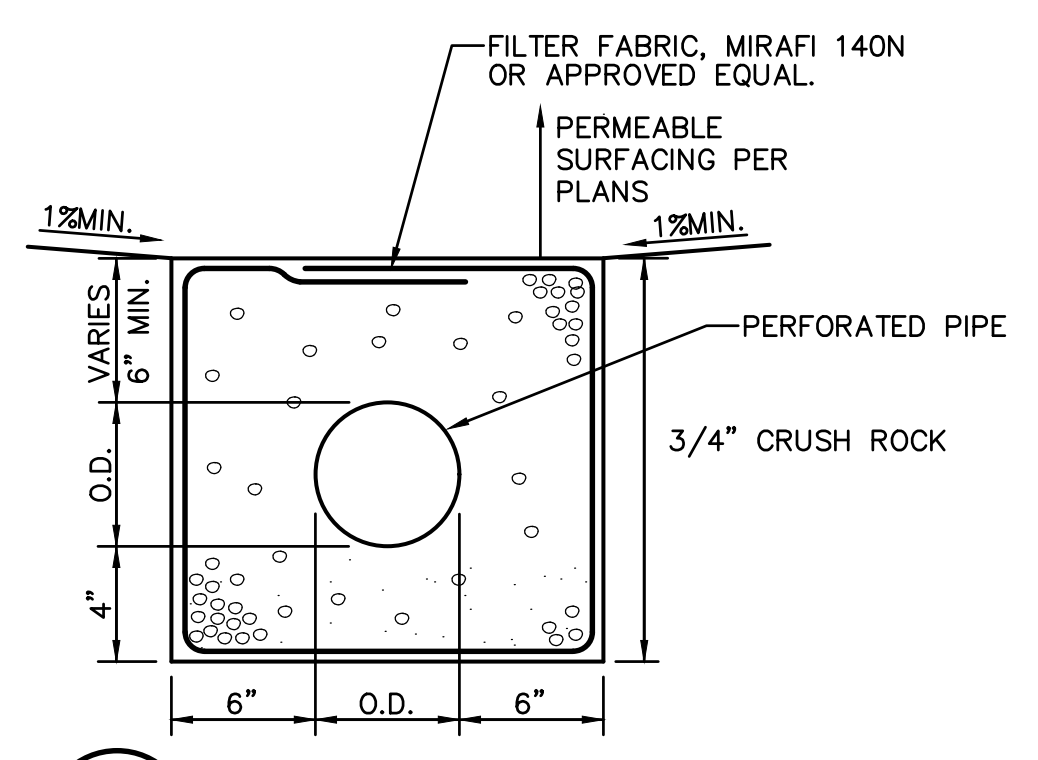


GENERAL NOTES:
1. GRATE SHALL BE CAST IRON, TRAFFIC RATED HELPPROOF, MULTI-DIRECTIONALLY ADA ACCESSIBLE GRATE WITH MANUFACTURER OR PRE-INSTALLATION APPLIED RUST INHIBITIVE BLACK COATING. POLYDRAIN - MODEL 2506F
2. CONTRACTOR SHALL FURNISH AND INSTALL A MODEL 810A LOCKING DEVICE, OR APPROVED EQUAL, FOR ALL TRENCH DRAIN GRATES.
3. CONTRACTOR SHALL PURCHASE AND FURNISH THE MAINTENANCE/OPERATIONS DEPARTMENT OF THE SCHOOL WITH 1 MODEL 2231 TRENCH DRAIN SHOVEL HEAD, WITH STANDARD WOOD, OR COMPOSITE HANDLES.
4. ALL MITERED JOINTS SHALL BE SEALED WITH POLYDRAIN "POLYSEAL" CAULKING OR APPROVED EQUAL.

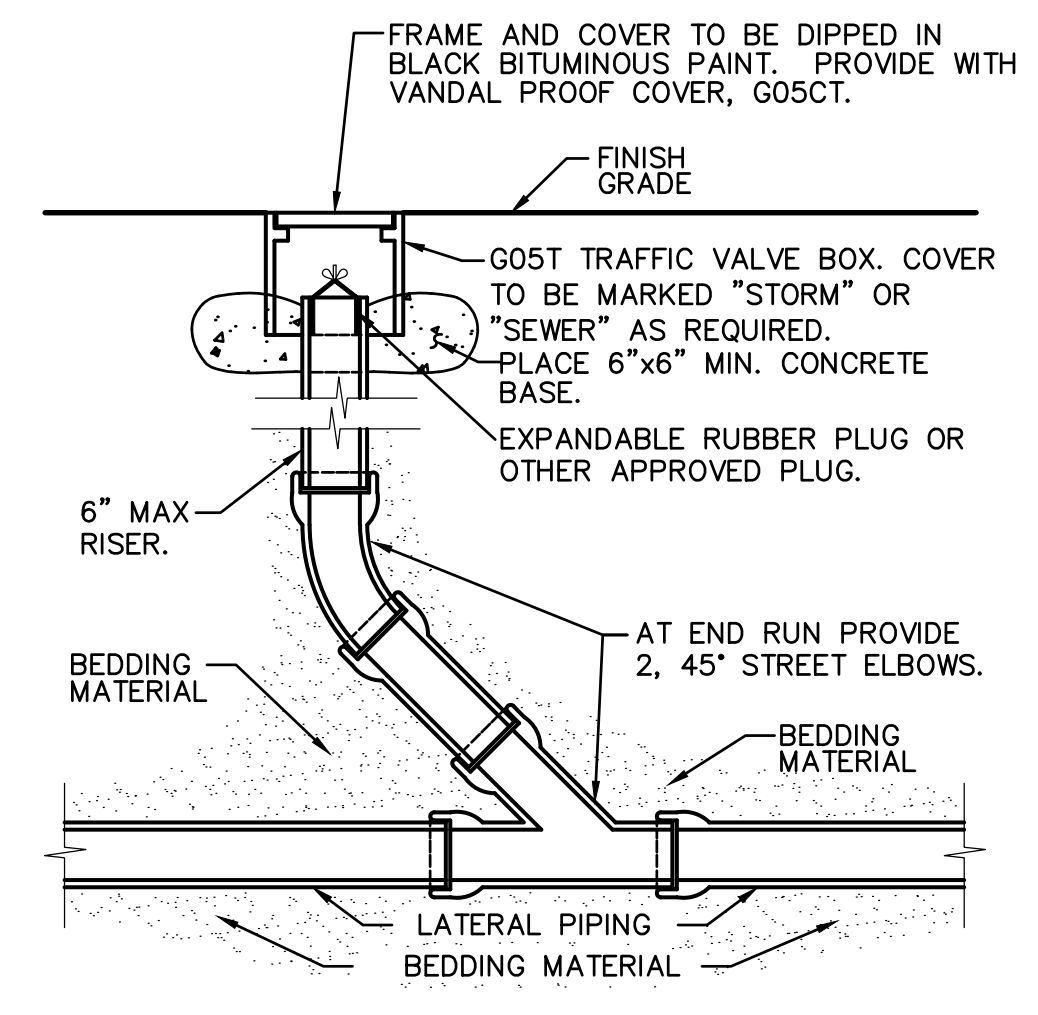
12 TRENCH DRAIN DETAIL NO SCALE



13 STORM/SEWER TRENCH NO SCALE



14 SUBDRAIN TRENCH DETAIL NO SCALE



15 CLEANOUT NO SCALE