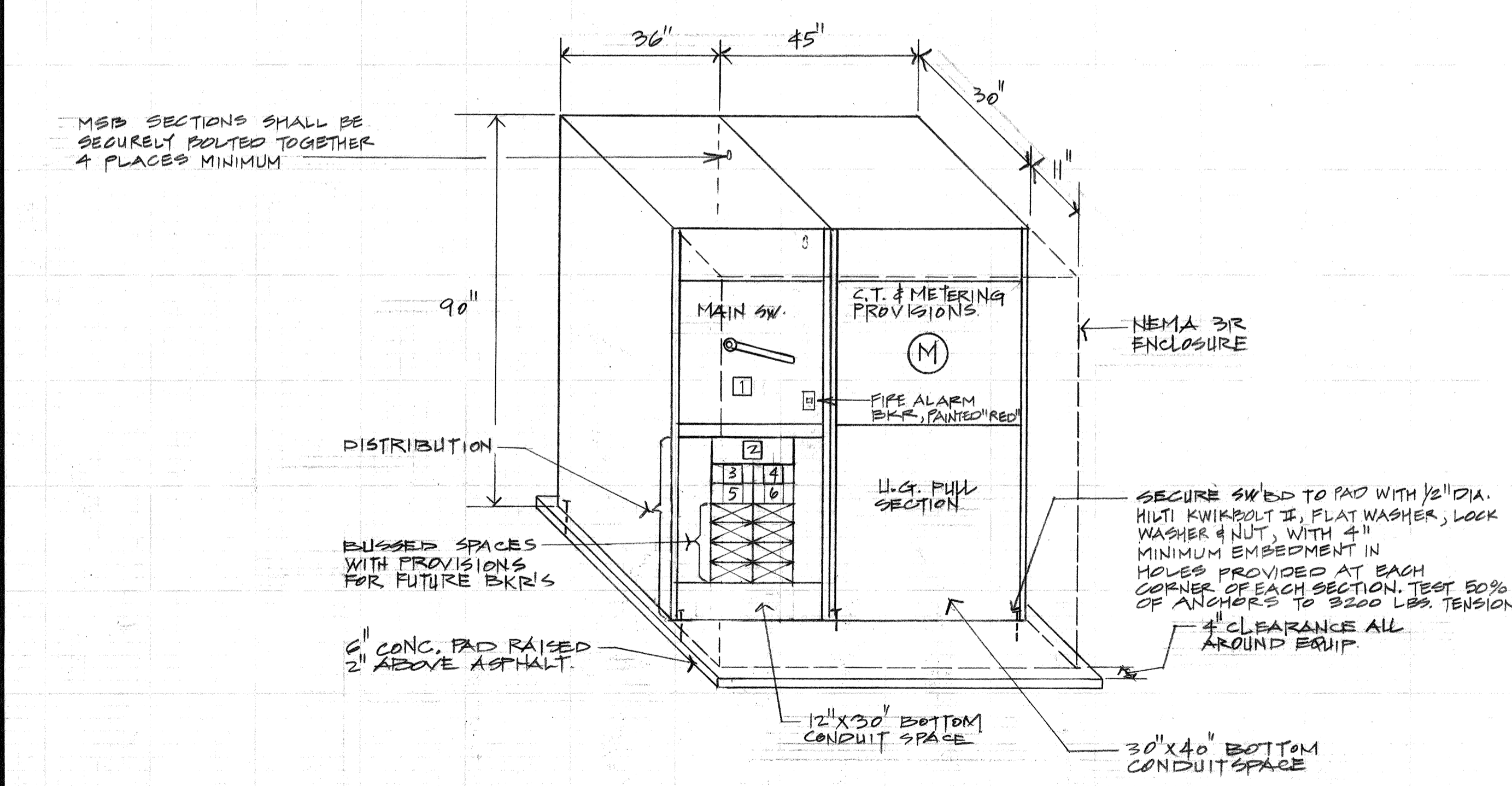


- NUMBERED NOTES**
- GROUND ROD BOX, PRECAST CONCRETE, CHRISTY #N9BOX WITH LID #N9J ENGRAVED: "ELECT". SET BOX ON FORMED CONCRETE BASE ALL ALONG BOTTOM EDGE OF BOX. PROVIDE GRAVEL SUMP FOR DRAINAGE. GROUND ROD SHALL BE 3/4" DIAMETER X 10'-0" LONG COPPERWELD ROD. CONNECT GROUND CONDUCTOR(S) TO GROUND ROD WITH GROUND CLAMP. SEE B/E-1 AND B/E-2 FOR LOCATION OF RESPECTIVE GROUND ROD BOX.
 - 1/2" CONDUIT PVC WITH 1#4 COPPER GROUND FORM GROUND ROD TO NEAREST NEW FENCE POST. STUB-UP IN CONCRETE BASE OF POST AND CONNECT TO POST WITH GROUND CLAMP.
 - 1/2" CONDUIT PVC WITH 1#4 COPPER GROUND FORM GROUND ROD TO NEAREST EXISTING FENCE POST AT TRANSFORMER ENCLOSURE. STUB-UP ADJACENT TO POST AND CONNECT TO POST WITH GROUND CLAMP.

A ONE LINE DIAGRAM
 NO SCALE



- NOTES**
- MAIN SWITCHBOARD SHALL BE RATED MINIMUM 42,000 A.I.C. AND CONSTRUCTED NEMA-3R OUTDOOR, AND EQUIPPED WITH COPPER BUSSING.
 - PROVIDE DOUBLE PADLOCK PROVISIONS ON UTILITY SECTION.
 - SWITCHBOARD SHALL BE BOLTED TO A CONCRETE PAD RAISED 2" ABOVE THE SURROUNDING ASPHALT SURFACE. THE HIGHEST BREAKER SHALL NOT EXCEED MAXIMUM HEIGHT REQUIRED BY CODE. THE METER AND C.T. PROVISIONS SHALL NOT EXCEED MAXIMUM HEIGHT REQUIRED BY UTILITY COMPANY. SAW CUT AND REMOVE ASPHALT SURFACE. REMOVE LOOSE MATERIAL AND COMPACT SUB-BASE SURFACE. INSTALL #4 REINFORCING BAR AT 12" O.C. EACH WAY WITH BARS 3" CLEAR FROM BOTTOM OF SLAB AND EDGE OF SLAB, REINFORCING BAR, DEFORMED STEEL BARS, ASTM A615, GRADE 40. CONCRETE COMPRESSIVE STRENGTH IN 28 DAYS SHALL BE 3000 PSI. SMOOTH SURFACE BY SCREEDING AND FLOATING. WORK EDGES OF SLAB WITH AN EDGING TOOL AND ROUND TO 1/2" RADIUS. ELIMINATE TOOL MARKS ON CONCRETE SURFACE. PROVIDE SMOOTH SURFACE WITH STEEL TROWEL FINISH.

(FUTURE COMPUTERS AND MISCELLANEOUS POWER)

PANEL TYPE	MAINS BUS	SERVICE	MTG.	BOX	SPECIAL						
1N	DOUBLE 225A LUGS	120/208V 3φ, 4W	SURFACE	W=20" D=5-3/4"	PROVIDE GROUND BUS						
φA	φB	φC	DIRECTORY	BKR	CIR	CIR	BKR	DIRECTORY	φA	φB	φC
-	-	-	SPARE	20/1	1	2	20/1	SPARE	-	-	-
-	-	-	SPARE	20/1	3	4	20/1	SPARE	-	-	-
-	-	-	SPARE	20/1	5	6	20/1	SPARE	-	-	-
-	-	-	SPARE	20/1	7	8	20/1	SPARE	-	-	-
-	-	-	SPARE	20/1	9	10	20/1	SPARE	-	-	-
-	-	-	SPARE	20/1	11	12	20/1	SPARE	-	-	-
-	-	-	SPACE	PFB/1	13	14	PFB/1	SPACE	-	-	-
-	-	-	SPACE	PFB/1	15	16	PFB/1	SPACE	-	-	-
-	-	-	SPACE	PFB/1	17	18	PFB/1	SPACE	-	-	-
-	-	-	SPACE	PFB/1	19	20	PFB/1	SPACE	-	-	-
-	-	-	SPACE	PFB/1	21	22	PFB/1	SPACE	-	-	-
-	-	-	SPACE	PFB/1	23	24	PFB/1	SPACE	-	-	-
-	-	-	SPACE	PFB/1	25	26	PFB/1	SPACE	-	-	-
-	-	-	SPACE	PFB/1	27	28	PFB/1	SPACE	-	-	-
-	-	-	SPACE	PFB/1	29	30	PFB/1	SPACE	-	-	-
-	-	-	SPACE	PFB/1	31	32	PFB/1	SPACE	-	-	-
-	-	-	SPACE	PFB/1	33	34	PFB/1	SPACE	-	-	-
-	-	-	SPACE	PFB/1	35	36	PFB/1	SPACE	-	-	-
-	-	-	SPACE	PFB/1	37	38	PFB/1	SPACE	-	-	-
-	-	-	SPACE	PFB/1	39	40	PFB/1	SPACE	-	-	-
-	-	-	SPACE	PFB/1	41	42	PFB/1	SPACE	-	-	-

- NOTES:**
- PANEL SHALL BE DOOR-IN-DOOR CONSTRUCTION.
 - PANEL "1S" SHALL BE SIMILAR.
 - PANEL "2N" AND "2S" SHALL BE SIMILAR EXCEPT SINGLE LUGS.

(FUTURE WINDOW A/C'S)

PANEL TYPE	MAINS BUS	SERVICE	MTG.	BOX	SPECIAL						
1ACN	DOUBLE 225A LUGS	120/208V 3φ, 4W	SURFACE	W=20" D=5-3/4"	PROVIDE GROUND BUS						
φA	φB	φC	DIRECTORY	BKR	CIR	CIR	BKR	DIRECTORY	φA	φB	φC
-	-	-	SPACE	PFB/1	1	2	PFB/1	SPACE	-	-	-
-	-	-	SPACE	PFB/1	3	4	PFB/1	SPACE	-	-	-
-	-	-	SPACE	PFB/1	5	6	PFB/1	SPACE	-	-	-
-	-	-	SPACE	PFB/1	7	8	PFB/1	SPACE	-	-	-
-	-	-	SPACE	PFB/1	9	10	PFB/1	SPACE	-	-	-
-	-	-	SPACE	PFB/1	11	12	PFB/1	SPACE	-	-	-
-	-	-	SPACE	PFB/1	13	14	PFB/1	SPACE	-	-	-
-	-	-	SPACE	PFB/1	15	16	PFB/1	SPACE	-	-	-
-	-	-	SPACE	PFB/1	17	18	PFB/1	SPACE	-	-	-
-	-	-	SPACE	PFB/1	19	20	PFB/1	SPACE	-	-	-
-	-	-	SPACE	PFB/1	21	22	PFB/1	SPACE	-	-	-
-	-	-	SPACE	PFB/1	23	24	PFB/1	SPACE	-	-	-
-	-	-	SPACE	PFB/1	25	26	PFB/1	SPACE	-	-	-
-	-	-	SPACE	PFB/1	27	28	PFB/1	SPACE	-	-	-
-	-	-	SPACE	PFB/1	29	30	PFB/1	SPACE	-	-	-
-	-	-	SPACE	PFB/1	31	32	PFB/1	SPACE	-	-	-
-	-	-	SPACE	PFB/1	33	34	PFB/1	SPACE	-	-	-
-	-	-	SPACE	PFB/1	35	36	PFB/1	SPACE	-	-	-
-	-	-	SPACE	PFB/1	37	38	PFB/1	SPACE	-	-	-
-	-	-	SPACE	PFB/1	39	40	PFB/1	SPACE	-	-	-
-	-	-	SPACE	PFB/1	41	42	PFB/1	SPACE	-	-	-

- NOTES:**
- PANEL SHALL BE DOOR-IN-DOOR CONSTRUCTION.
 - PANEL "1ACS" SHALL BE SIMILAR.
 - PANEL "2ACN" AND "2ACS" SHALL BE SIMILAR EXCEPT SINGLE LUGS.

A.C. SYSTEMS ENGINEERING, INC.
 CONSULTING ELECTRICAL ENGINEERS
 5457 DIABLO DRIVE
 SACRAMENTO, CALIFORNIA 95842
 (916) 395-9540
 FAX (916) 395-9526
 Home: 916-395-9516
 E-526 JOB No. 93116

SACRAMENTO CITY UNIFIED SCHOOL DISTRICT
 SACRAMENTO, CA
 425 FIRST AVE.

OLD MARSHALL SCHOOL
 2710 G STREET
 SACRAMENTO CA

DATE 4/7/93
 SCALE NONE
 DRAWN W.Y.
 JOB 93116
 SHEET
E-5
 OF 5 SHEETS