



# Sam Brannan Middle School

**Don Nannini, Principal**

5301 Elmer Way, Sacramento 95822

264-4350

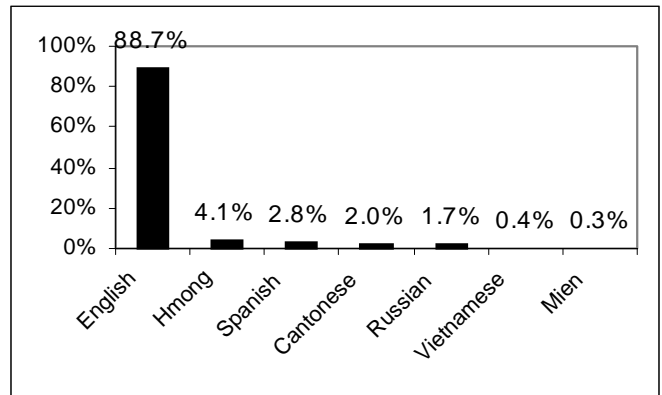
We at Sam Brannan Middle School are very proud of our school, as it enjoys a fine reputation in our community. Over the last three (3) years, the percentages of student averaging 3.0 GPA or better has risen to 44%. Our SAT-9 scores showed an overall growth of 10.5% from the previous year.

Corrective Reading and Accelerated Reading Programs have been added to our Language Arts Department. The programs are designed to increase reading, reading comprehension, vocabulary, and spelling.

Our attendance last year was 95.1%. This year, we are targeting 96%.

*Don Nannini, Principal*

### Languages Spoken at Sam Brannan



### Class Sizes

We have reduced our overall class size in Language Arts and Math. We currently have four (4) classes in Language and four (4) classes in Math with a ratio of 20:1 to address student test scores that are below 35th quartile.

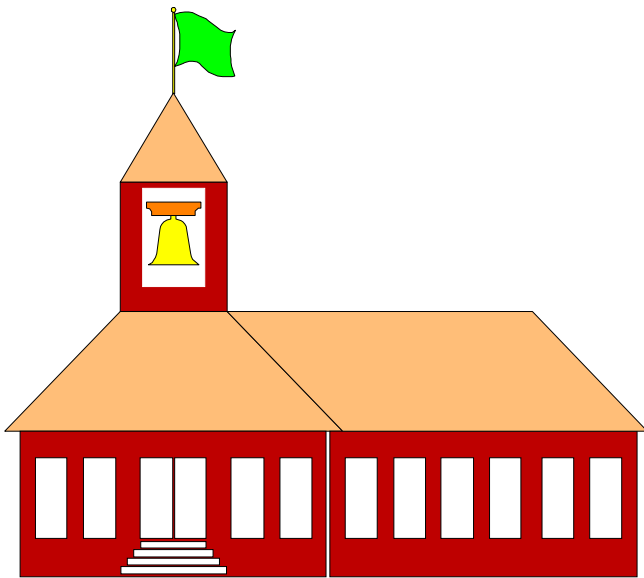
### Academic Performance Index

In 1999 the Public Schools Accountability Act was enacted. A key component of this act is the Academic Performance Index (API). The API is a way to show a school's performance in relationship to other schools in the state. It is also used to set school targets for improving student performance. At this time the API is based totally on the STAR SAT 9 test, but other indicators such as new tests, attendance and graduation rates will be added as they are available.

In 1999 Sam Brannan earned an Academic Performance Index of 633. This index is below the state goal of at least 800. Next year this school's target will be 641 which is 5% of the distance to the goal of 800.

### Vital Signs

The District's Vital Signs represent our most important work areas. Our goal for student achievement is to have at least nine out of every ten students achieving the standard we have set in each of the Vital Signs by 2001. The Vital Signs include readiness for kindergarten, attendance in school, reading and math proficiency, English language fluency for English learners, high school graduation and a successful post-high school transition. This school report shows how students at Sam Brannan are currently achieving on their Vital Signs.



### Student Enrollment by Racial or Ethnic Group

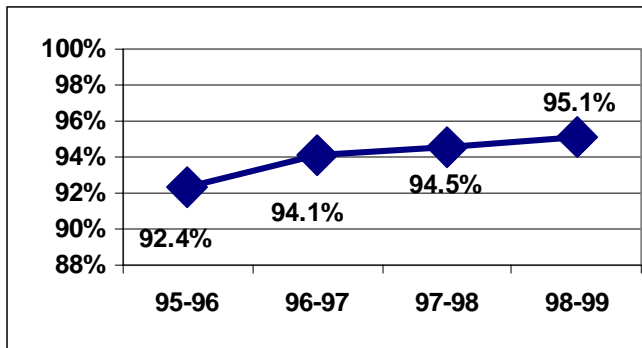
Group	School		All Middle Schools	
	1995-96	1998-99	1995-96	1998-99
Asian	298	307	2,067	2,025
Black	209	264	1,405	1,482
Hispanic	149	159	1,482	1,768
White	195	224	1,975	1,878
Amer. Indian	14	7	111	104
Totals	865	966	7,040	6,879

## School Library or Media Center



Our library and information center is the hub of learning at Sam Brannan Middle School. Our goal is to support students in becoming independent critical thinkers, researchers and readers. We also have a full-time librarian. The library is open from 8:10 a.m. to 3:00 p.m. and during lunches. We have an On-Line Catalog (OPAC). Multiple stations are available for students to retrieve titles for research and a direct link to bibliographies for research topics. We also have Internet capabilities (Multi-Media Center). There are 17 Multiple stations with World Book on-line, word processing and the Wide-area Network.

## Student Attendance at School



We want to have each student in school at least 95% of the days. This means no more than nine absences in a school year. During 1998 at Sam Brannan, students attended an average of 95.1% of school days.

## Policy on Attendance

- Students are expected to be punctual to school each day and be prepared to work.
- Students who are late or absent from school miss valuable instruction time.
- Parents of students who are chronically absent without a valid excuse are responsible for improving the attendance of their child.
- If a student is absent without a valid excuse three days during the school year, he/she is lawfully truant.
- If a student is absent without a valid excuse five or more times during the year, he/she may be referred to the School Attendance Review Board (SARB).

In the Spring 1999 Parent Survey, 60% of parents responding felt Sam Brannan is a safe school.

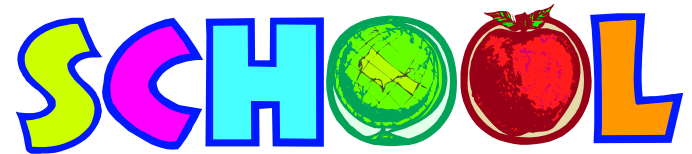
## Student Suspensions

Student Suspensions		
	1997-1998	1998-1999
By Principal	325	281
By Teacher	21	209
Total Suspensions	346	490

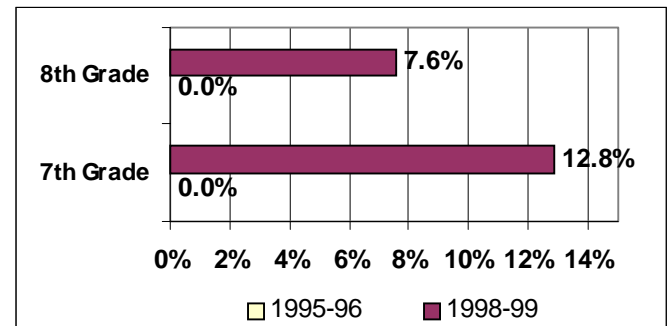
## Parent Participation at Sam Brannan

“Partners on Campus” has proven to be a very successful tool in helping us maintain a calm learning environment on campus. Parents have an opportunity to become familiar with campus life, view students and teachers engaging in the classroom, and most important, showing your child that you care about their education daily from 11:15 a.m. to 1:00 p.m.

**A** is the grade Sam Brannan received from parents in the Spring 1999 Parent Survey.



## Drop Out Rate



Each year the District checks on the number of students who dropout from each grade. The graph above reports the percentage of students who left Sam Brannan Middle School without any record of transfer to another school. We want all students to complete Middle School.

## Extra Funding for School Programs

Sam Brannan receives funding from:

- School Improvement Program (SIP) to help schools improve achievement
- State Compensatory Education (SCE) to assist low-achieving students
- Hewlett Packard corrective reading grant

# VITAL SIGNS

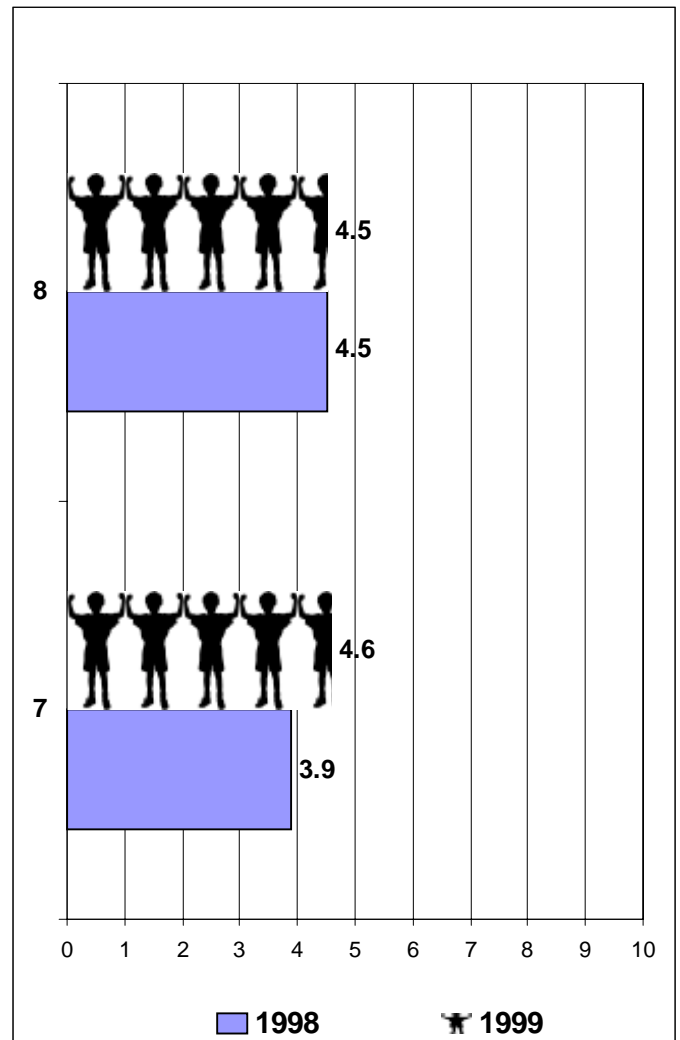
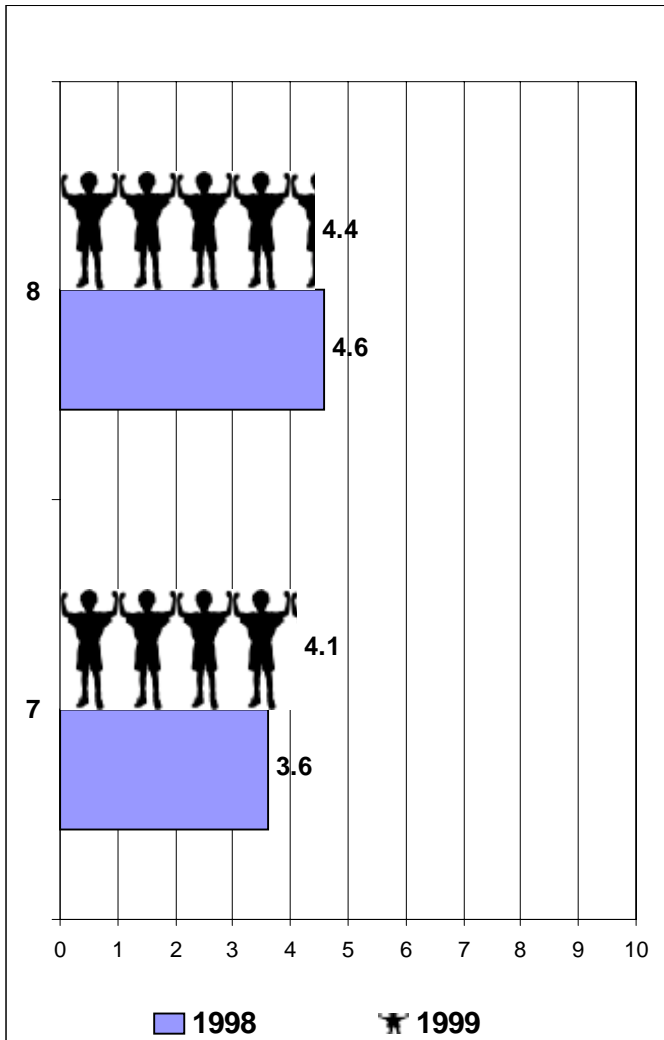
## Sam Brannan Middle School

### Reading and Math Achievement

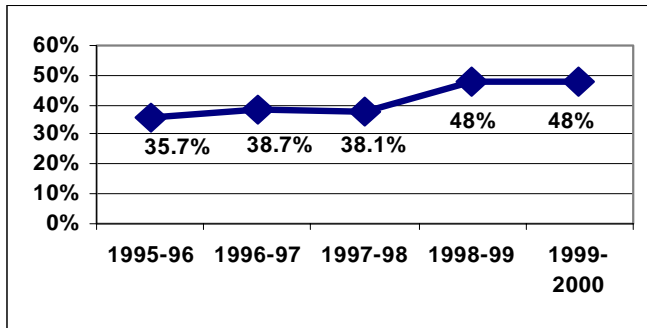
Beginning in 1998, students took the Stanford Achievement Test, 9th Edition (SAT9). This test provided individual student scores that were reported to parents. The District used these scores to count students at or above grade level. Our District goal is to have 9 out of 10 student scores at or above grade level by 2001. The graphs below show how many students out of 10 were at or above grade level in the spring of 1998 and 1999.

#### READING

#### MATHEMATICS

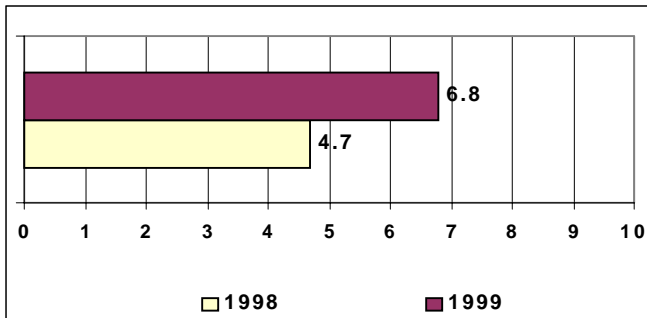


### Free and Reduced Price Meal Participation



Many students in Sacramento City schools participate in a Federally sponsored program to supply either free or reduced price meals at school. This program is available to students on the basis of family income per child. At Sam Brannan the percentage of students qualifying for either free or reduced price meals during the past five years is shown above.

### English Fluency



We want all students learning English as a second language to be fluent in English within 5 years of enrollment. This graph indicates how many students out of 10 achieved fluency after five years 1993-1998 and 1994-99.

### Teacher and Staff Training

This year through extra funding, we were able to schedule three all day in-services for all the departments. Our staff is playing a major role in curriculum development with the district office.

### Student Services

We have a full-time counselor and a school psychologist that is on campus for two (2) full days. We will also be adding a school liaison for 3 ½ days to address attendance, and our SART and SARB program.

### Superintendent's Message

Dear Parents:

Thank you for taking the time to review this important information about your child's school. You are our partner in helping us provide a quality education for your child.

Over the past year, our district has received a great deal of good news coverage about our students' dramatic progress in reading and math. The 1998-99 school year was the second year of our strategic plan, "High Standards, Great Results." Although we are encouraged by the improved achievement of our children, we know that we still have much work to do before we reach our goals in all seven focus areas of the plan - kindergarten readiness, attendance, reading, math, English language proficiency, graduation and post-graduation success.

We will continue to work hard to achieve excellence at all our schools for all our students. Our young people and community deserve it.

Jim Sweeney  
Superintendent

### District Accountability Report Card

A report on District achievement of Vital Signs is available. The District Accountability Report Card for 1998-99 can be picked up at school offices or from Research and Evaluation Services (264-4295). The District report includes these additional areas of interest:

- Expenditures per student
- Assignment of teachers
- Student support services
- Teacher salaries
- Textbooks and instructional materials
- Educational Technology
- District SAT 9 data
- Response rate to survey questions
- Availability of qualified substitute teachers
- Expulsions by ethnicity
- Teacher credentials
- School facilities

Prepared by Research and Evaluation Services, February 2000