

ELECTRICAL IMPROVEMENT ROOF PLAN - BLDG 1

2
1/8" = 1'-0"

KEY NOTES

1. DEMO MECHANICAL EXHAUST FAN, RESERVE THE (E) ELECTRICAL CIRCUITING FOR (N) EXHAUST FAN. SEE KEY NOTE 3 ON THIS SHEET.
2. DEMO MECHANICAL MAU, DEMOLISH AND REMOVE ASSOCIATED ELECTRICAL CIRCUITING AND DISCONNECT.
3. (N) MECHANICAL EXHAUST FAN, RECONNECT THE (N) EXHAUST FAN TO THE (E) POWER AND CONTROL CIRCUITING. SEE MECHANICAL DRAWINGS FOR MORE INFO.
4. (N) MECHANICAL "MAU" UNIT, 460V/3-PHASE, 16.3A MCA, 20A MOCP. PROVIDE 30AS/20AF/3P HEAVY DUTY WEATHERPROOF FUSIBLE DISCONNECT SWITCH. PROVIDE 3/4" C-3#12 CU +1#12 CU GND.
5. (N) MECHANICAL "HEF" FAN, 120V/1-PHASE, 11.6A FLA. PROVIDE 30AS/20AF/2P HEAVY DUTY WEATHERPROOF FUSIBLE DISCONNECT SWITCH. EXTEND (E) CIRCUITING AS REQUIRED.

AGENCY APPROVAL:



HMC Architects

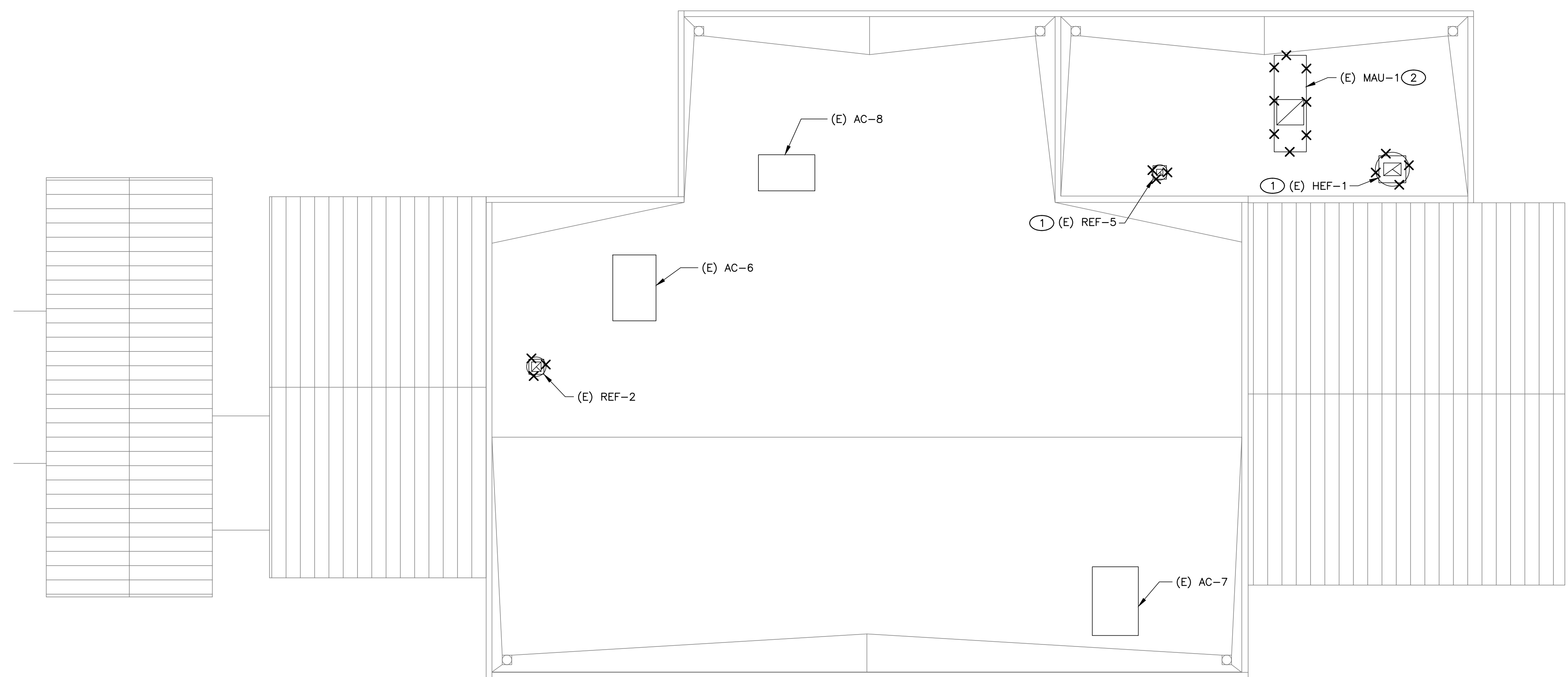
3186-070-000

2101 CAPITOL AVENUE, SUITE 100,
SACRAMENTO, CA, 95816
916 368 7990 / www.hmcarchitects.com

ISSUE	DESCRIPTION	DATE
1	ADDENDUM #1	03/01/2024

GENERAL NOTES

- A. FIELD VERIFY EXISTING CONDITIONS PRIOR TO PERFORMING WORK. NOTIFY ARCHITECT AND ENGINEER OF ANY CONFLICTS OR DISCREPANCIES.
- B. PATCH, REPAIR, AND FINISH AS NECESSARY FOR ANY DAMAGES DURING DEMOLITION AND INSTALL.



ELECTRICAL DEMOLITION ROOF PLAN - BLDG 1

1
1/8" = 1'-0"



FACILITY:
MATSUYAMA ELEMENTARY SCHOOL
7680 WINDBRIDGE DR.
SACRAMENTO, CA 95831

PROJECT:
MATSUYAMA ELEMENTARY SCHOOL MODERNIZATION

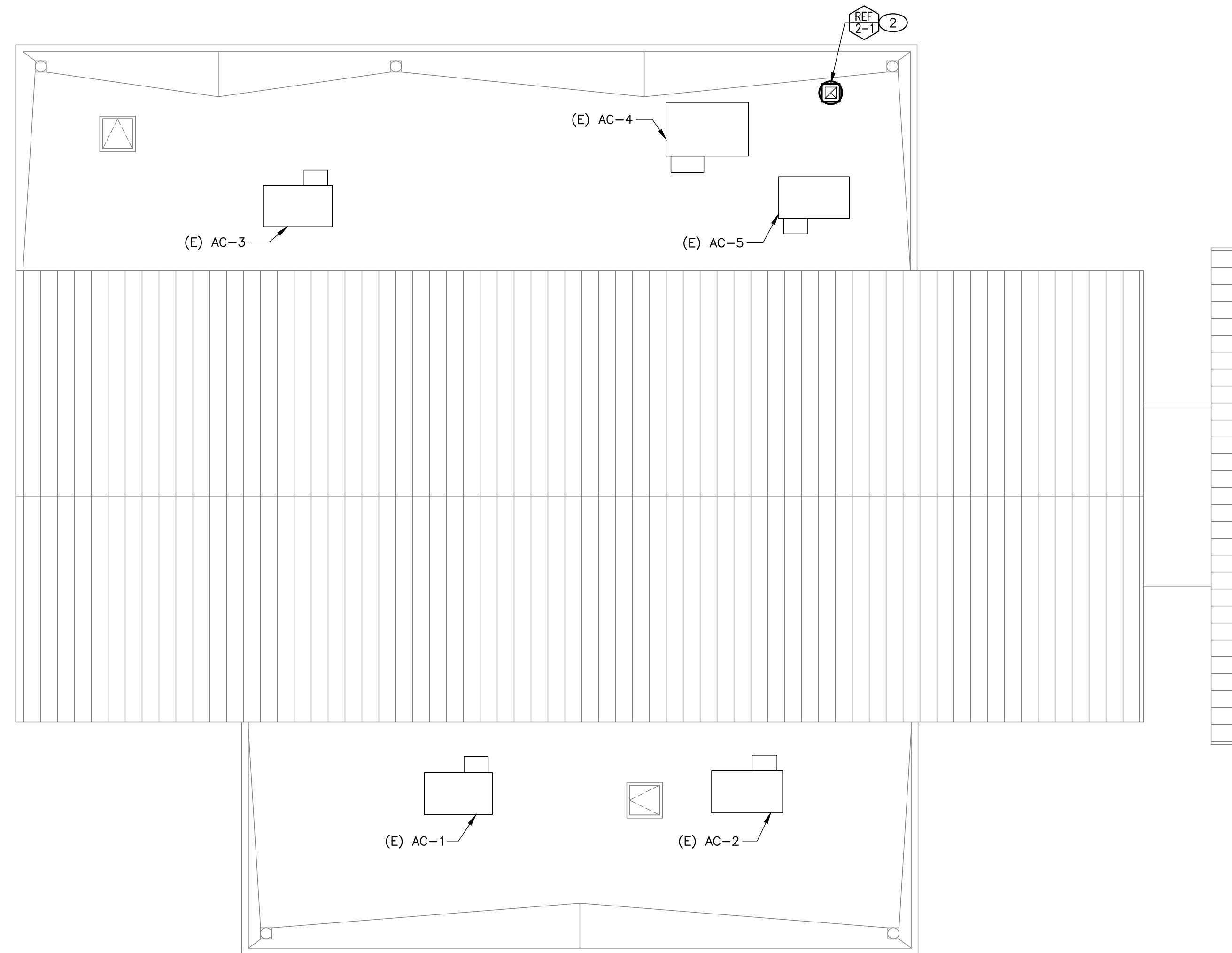
SHEET NAME:
ELECTRICAL DEMOLITION AND IMPROVEMENT ROOF PLANS - BLDG 1

DSA SUBMITTAL

DATE: 01/04/2024 CLIENT PROJ NO: 3186-070-000
SHEET:

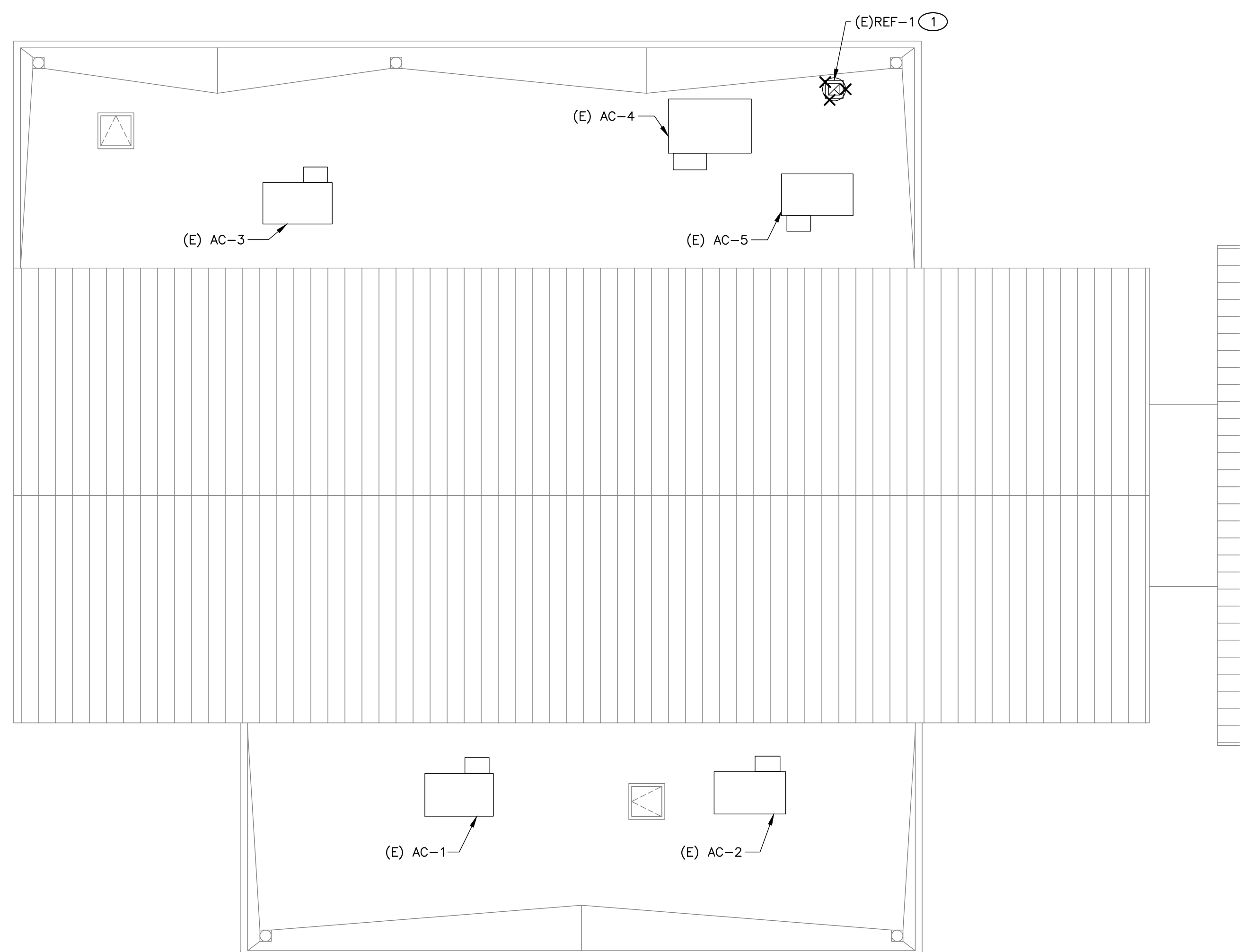
E4.11

FILE NAME: PROJECT: 3186-070-000 - SCUSD Matsuyama ES Modernization/0318607000-A-MATSUYAMA-MOD.rvt
DATE: 12/15/2023 2:28:53 PM



ELECTRICAL IMPROVEMENT ROOF PLAN - BLDG 2

2
1/8" = 1'-0"



ELECTRICAL DEMOLITION ROOF PLAN - BLDG 2

1
1/8" = 1'-0"

KEY NOTES

1. DEMO MECHANICAL EXHAUST FAN, RESERVE THE (E) ELECTRICAL CIRCUITING FOR (N) EXHAUST FAN. SEE KEY NOTE 2 ON THIS SHEET.
2. (N) MECHANICAL EXHAUST FAN WITH PRE-WIRED DISCONNECT SWITCH. RECONNECT THE (N) EXHAUST FAN TO THE (E) POWER AND CONTROL CIRCUITING. SEE MECHANICAL DRAWINGS FOR MORE INFO.

AGENCY APPROVAL:



HMC Architects

3186-070-000

2101 CAPITOL AVENUE, SUITE 100,
SACRAMENTO, CA, 95816
916 368 7990 / www.hmcarchitects.com

ISSUE		DATE
1	ADDENDUM #1	03/01/2024

GENERAL NOTES

- A. FIELD VERIFY EXISTING CONDITIONS PRIOR TO PERFORMING WORK. NOTIFY ARCHITECT AND ENGINEER OF ANY CONFLICTS OR DISCREPANCIES.
- B. PATCH, REPAIR, AND FINISH AS NECESSARY FOR ANY DAMAGES DURING DEMOLITION AND INSTALL.

Autodesk Docs: 318607000 - SCUSD Matsuyama ES Modernization/0318607000-A-MATSUYAMA-MOD.rvt
12/15/2023 2:28:53 PM

MEP & FS / Sustainability / CxA

LP CONSULTING ENGINEERS

1209 Pleasant Grove Blvd.
Roseville, CA 95678
p 916-771-0778
www.lpeengineers.com
Job #: 23-2274

PROFESSIONAL ENGINEER
MAMI S. ZEIDANI
No. E 16762
Exp. 9/30/24
ELECTRICAL
STATE OF CALIFORNIA

FACILITY:
MATSUYAMA ELEMENTARY SCHOOL
7680 WINDBRIDGE DR.
SACRAMENTO, CA 95831

PROJECT:
MATSUYAMA ELEMENTARY SCHOOL MODERNIZATION

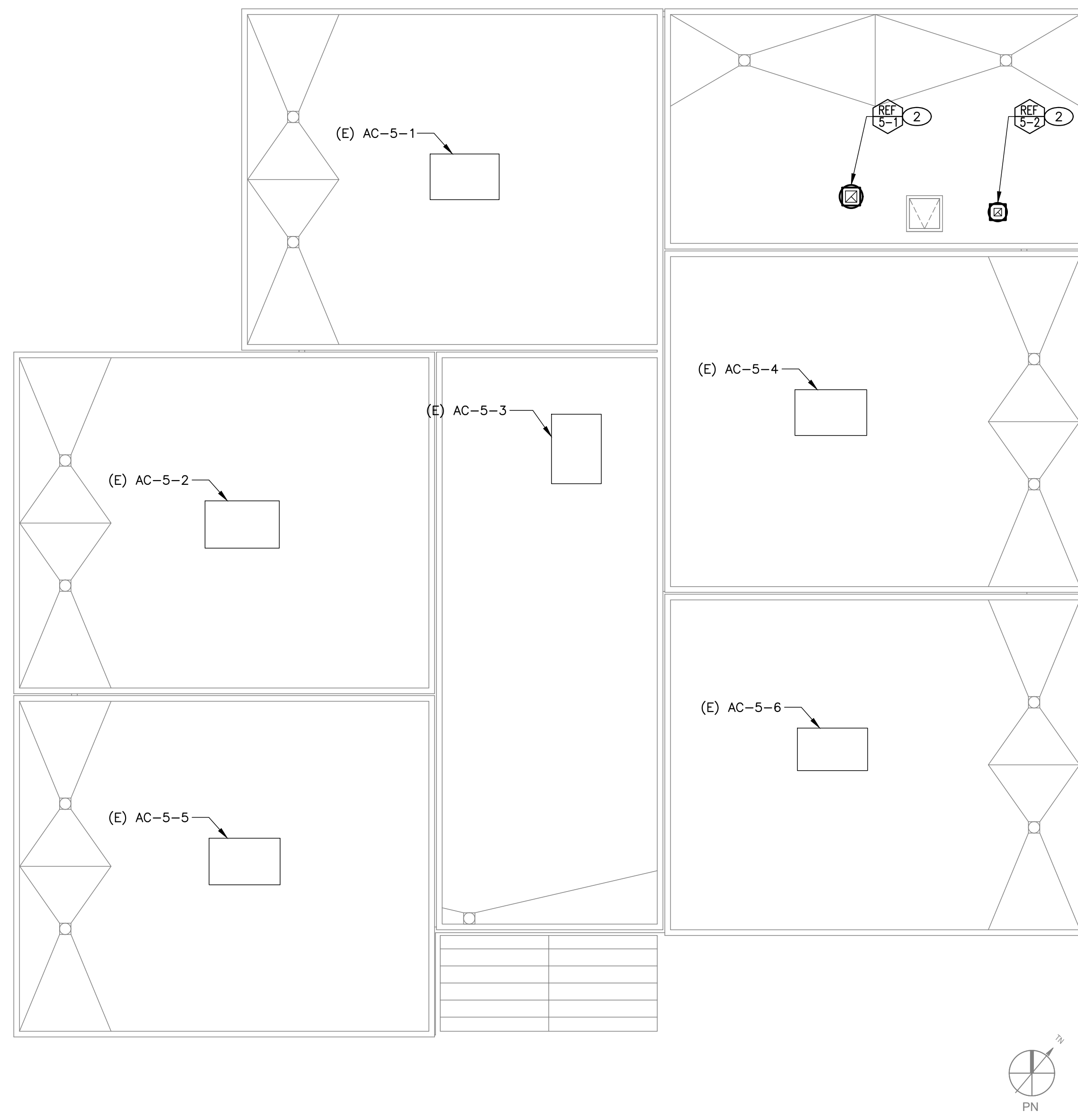
SHEET NAME:
ELECTRICAL DEMOLITION AND IMPROVEMENT ROOF PLANS - BLDG 2

DSA SUBMITTAL

DATE: 01/04/2024 CLIENT PROJ NO: 3186-070-000
SHEET:

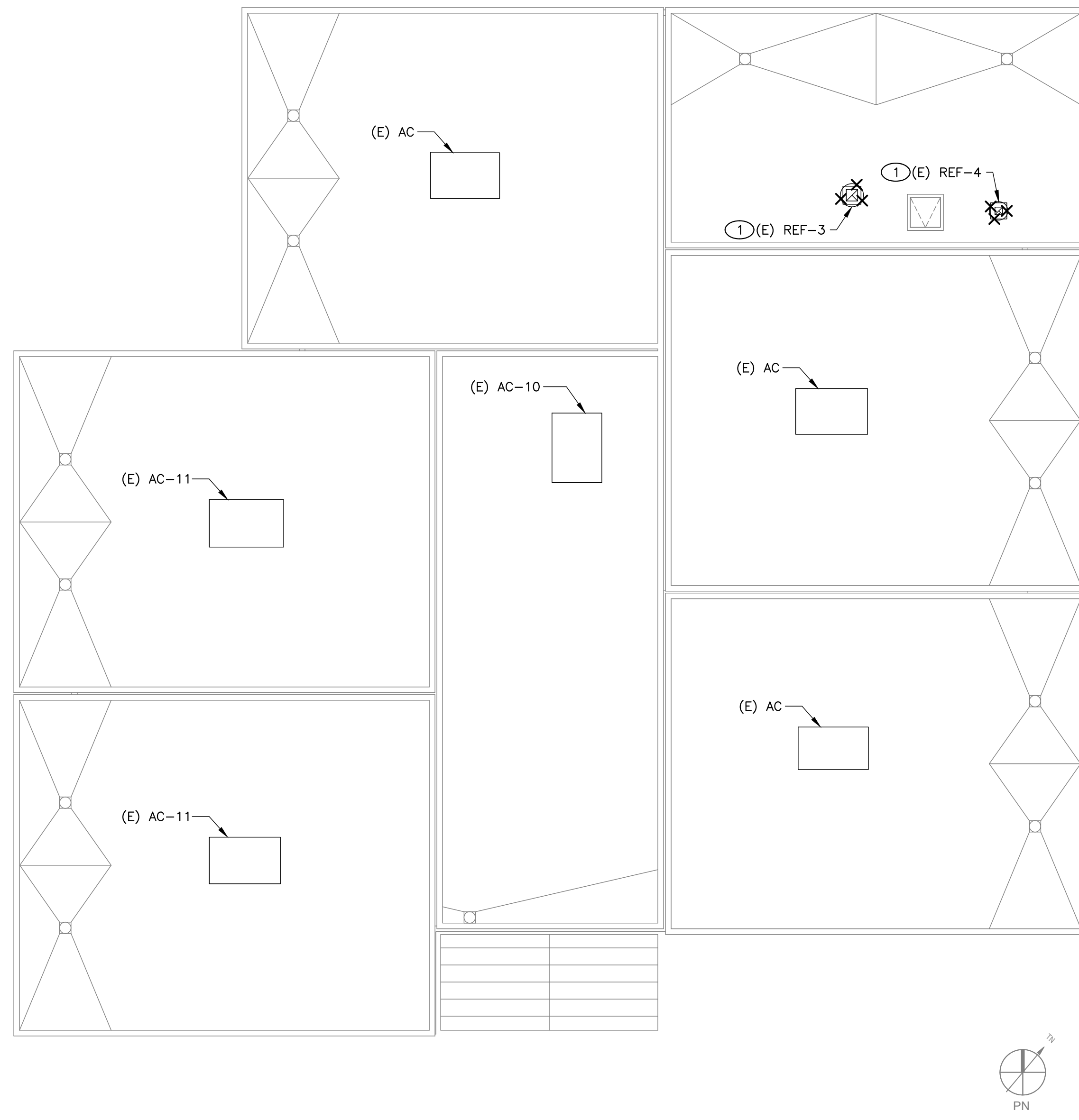
E4.12

IF THE LINE SHOWN ABOVE IS
EXACTLY AS SHOWN ABOVE IT IS
SHOWN TO ORIGINAL SCALE SIZE



ELECTRICAL IMPROVEMENT ROOF PLAN - BLDG 5

2
1/8" = 1'-0"



ELECTRICAL DEMOLITION ROOF PLAN - BLDG 5

1
1/8" = 1'-0"

KEY NOTES

1. DEMO MECHANICAL EXHAUST FAN, RESERVE THE (E) ELECTRICAL CIRCUITING FOR (N) EXHAUST FAN. SEE KEY NOTE 2 ON THIS SHEET.
2. (N) MECHANICAL EXHAUST FAN WITH PRE-WIRED DISCONNECT SWITCH. RECONNECT THE (N) EXHAUST FAN TO THE (E) POWER AND CONTROL CIRCUITING. SEE MECHANICAL DRAWINGS FOR MORE INFO.

GENERAL NOTES

- A. FIELD VERIFY EXISTING CONDITIONS PRIOR TO PERFORMING WORK. NOTIFY ARCHITECT AND ENGINEER OF ANY CONFLICTS OR DISCREPANCIES.
- B. PATCH, REPAIR, AND FINISH AS NECESSARY FOR ANY DAMAGES DURING DEMOLITION AND INSTALL.

AGENCY APPROVAL:



HMC Architects

3186-070-000

2101 CAPITOL AVENUE, SUITE 100,
SACRAMENTO, CA, 95816
916 368 7990 / www.hmcarchitects.com

ISSUE		DATE
1	ADDENDUM #1	03/01/2024

Autodesk Docs:016807000 - SCUSD Matsuyama ES Modernization:016807000-A-MATSUYAMA-MOD.rvt
12/15/2023 2:28:53 PM

MEP & FS / Sustainability / CxA
1209 Pleasant Grove Blvd.
Roseville, CA 95678
p 916-771-0778
www.jpengineers.com
Job #: 23-2274

FACILITY:
MATSUYAMA ELEMENTARY SCHOOL
7680 WINDBRIDGE DR.
SACRAMENTO, CA 95831

PROJECT:
MATSUYAMA ELEMENTARY SCHOOL MODERNIZATION

SHEET NAME:
ELECTRICAL DEMOLITION AND IMPROVEMENT ROOF PLANS - BLDG 5

DSA SUBMITTAL

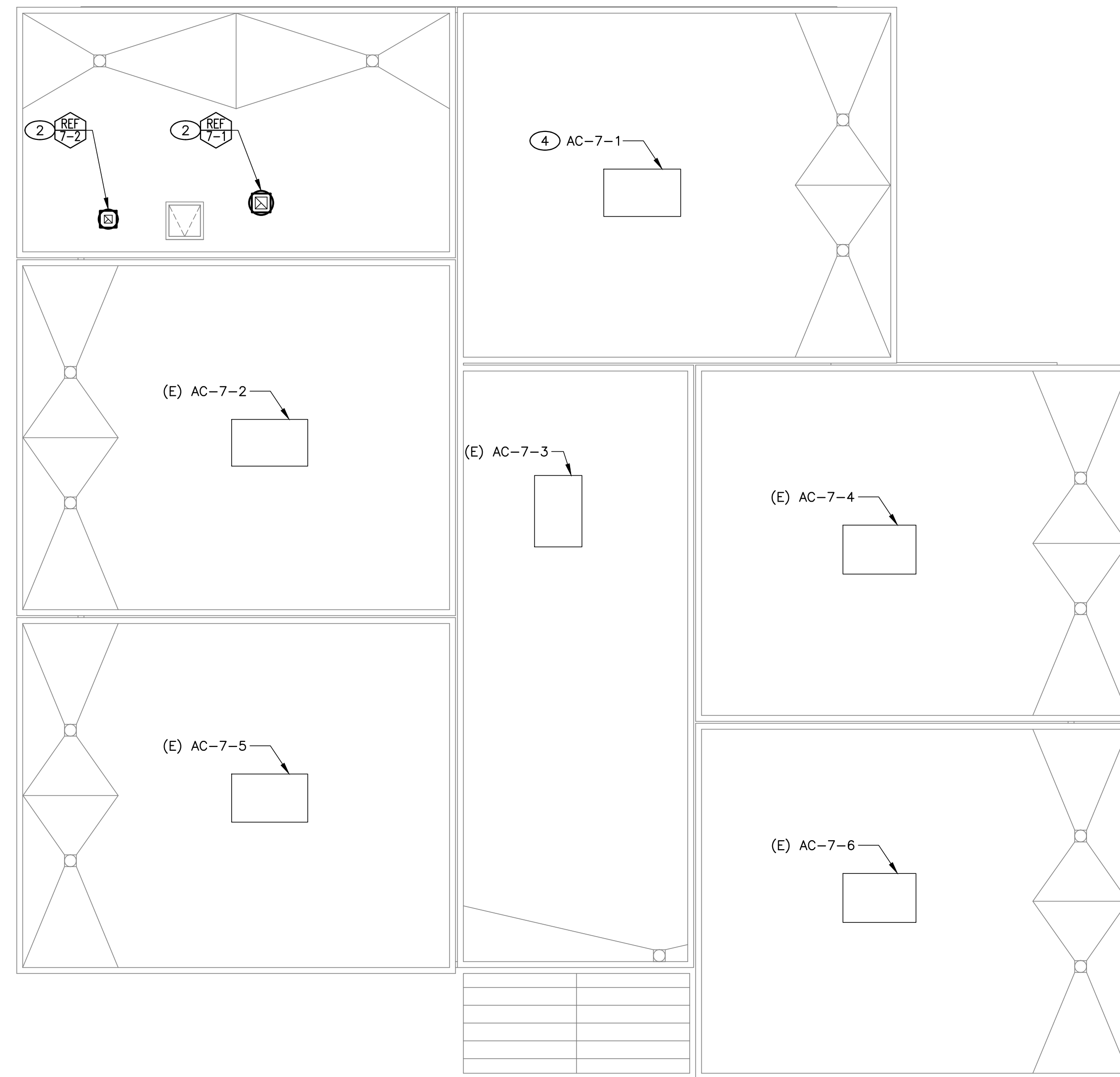
DATE: 01/04/2024 CLIENT PROJ NO: 3186-070-000

SHEET:

E4.13

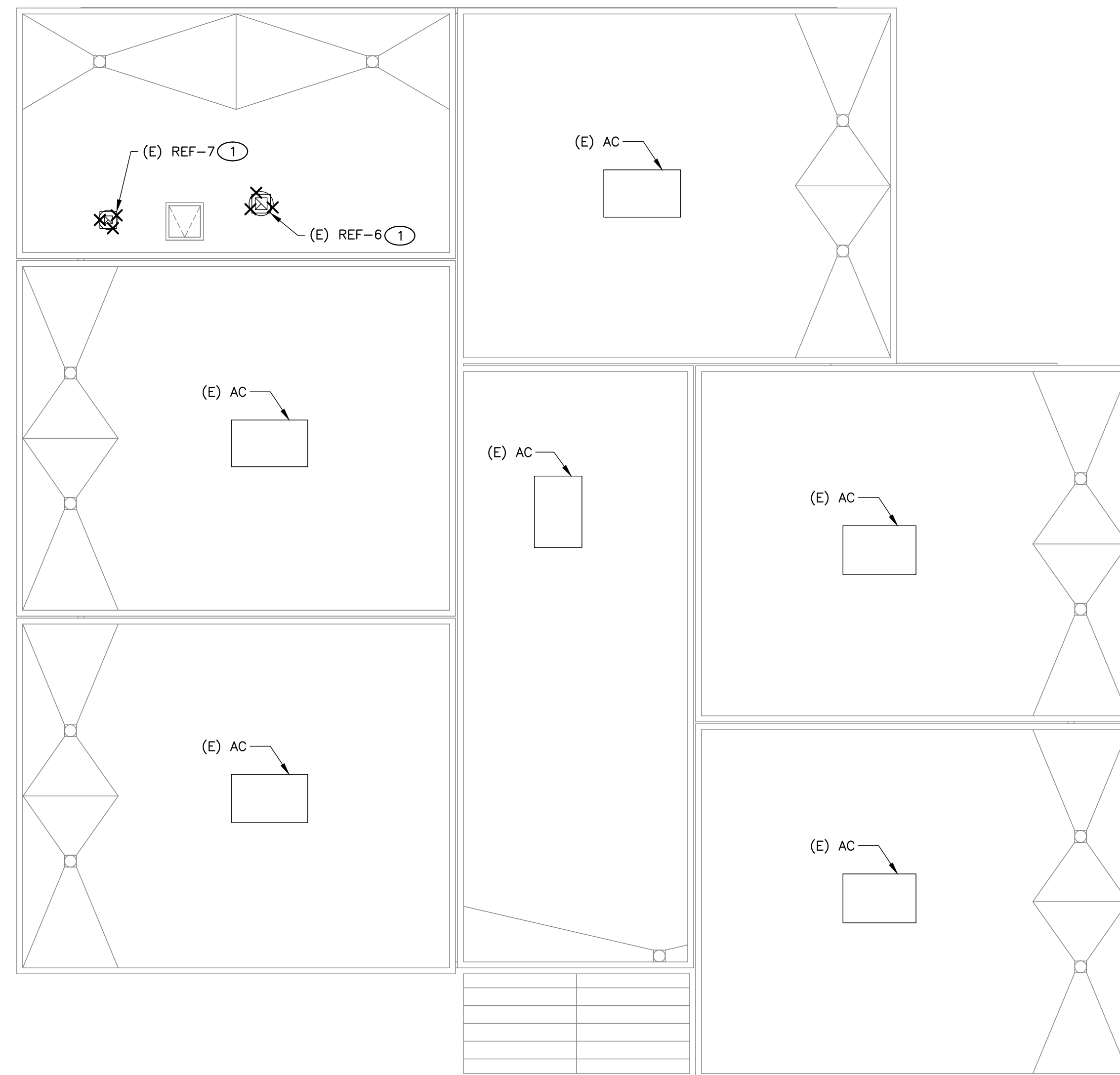
IF THE LINE SHOWN ABOVE IS
PLACED IN THE MIDDLE OF THE
SHEET, THE ORIGINAL PAGE SIZE

Autodesk Docs:016807000 - SCUSD Matsuyama ES Modernization:016807000-A-MATSUYAMA-MOD.rvt
12/15/2023 2:28:53 PM



ELECTRICAL IMPROVEMENT ROOF PLAN - BLDG 7

2
1/8" = 1'-0"



ELECTRICAL DEMOLITION ROOF PLAN - BLDG 7

1
1/8" = 1'-0"

KEY NOTES

1. DEMO MECHANICAL EXHAUST FAN, RESERVE THE (E) ELECTRICAL CIRCUITING FOR (N) EXHAUST FAN. SEE KEY NOTE 2 ON THIS SHEET.
2. (N) MECHANICAL EXHAUST FAN WITH PRE-WIRED DISCONNECT SWITCH; RECONNECT THE (N) EXHAUST FAN TO THE (E) POWER AND CONTROL CIRCUITING. SEE MECHANICAL DRAWINGS FOR MORE INFO.

GENERAL NOTES

- A. FIELD VERIFY EXISTING CONDITIONS PRIOR TO PERFORMING WORK. NOTIFY ARCHITECT AND ENGINEER OF ANY CONFLICTS OR DISCREPANCIES.
- B. PATCH, REPAIR, AND FINISH AS NECESSARY FOR ANY DAMAGES DURING DEMOLITION AND INSTALL.

AGENCY APPROVAL:



HMC Architects

3186-070-000

2101 CAPITOL AVENUE, SUITE 100,
SACRAMENTO, CA, 95816
916 368 7990 / www.hmcarchitects.com

ISSUE		DATE
1	ADDENDUM #1	03/01/2024



FACILITY:
MATSUYAMA ELEMENTARY SCHOOL
7680 WINDBRIDGE DR.
SACRAMENTO, CA 95831

PROJECT:
MATSUYAMA ELEMENTARY SCHOOL MODERNIZATION

SHEET NAME:
ELECTRICAL DEMOLITION AND IMPROVEMENT ROOF
PLANS - BLDG 7

DSA SUBMITTAL

DATE: 01/04/2024 CLIENT PROJ NO: 3186-070-000
SHEET:

E4.14

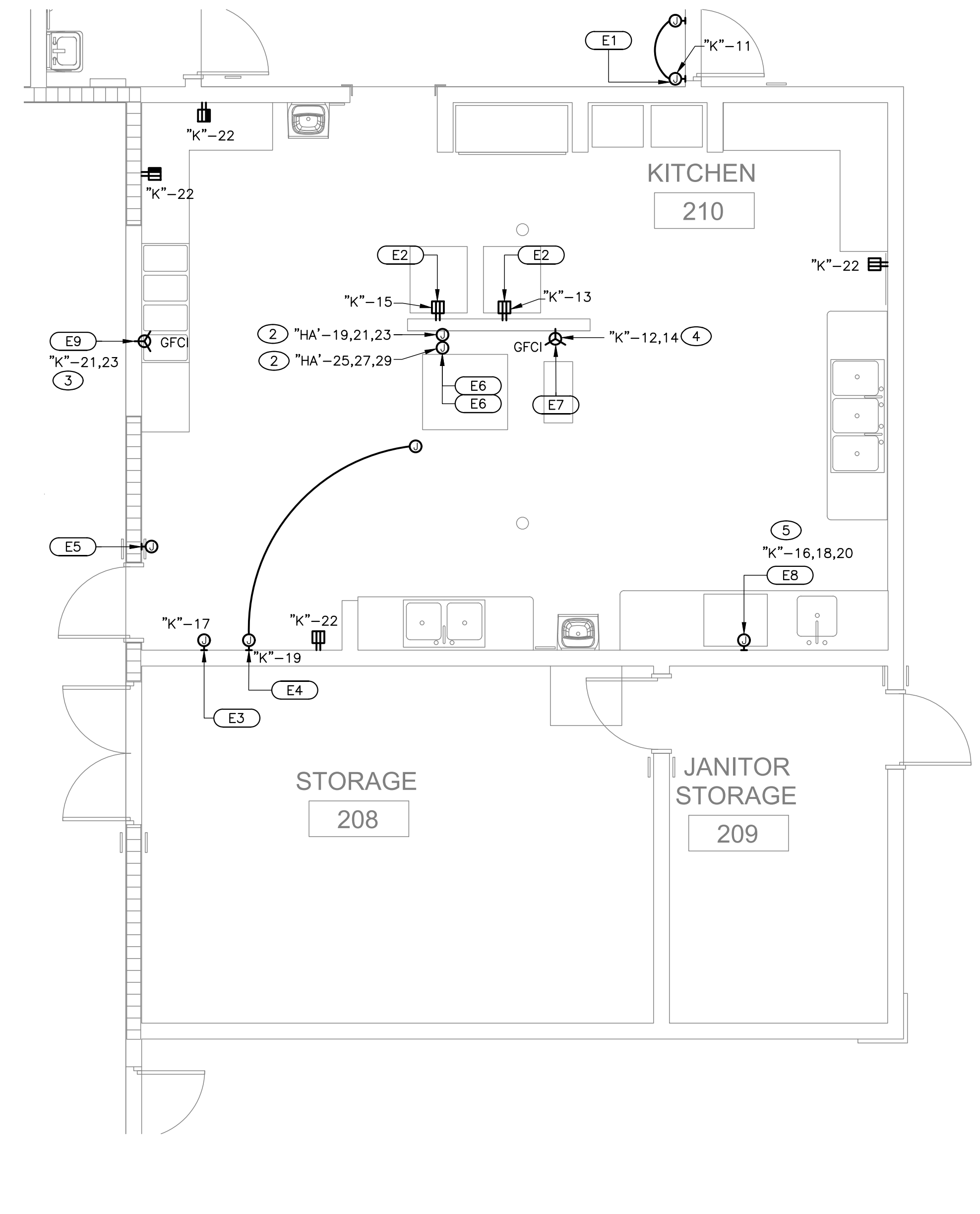
- ### KEY NOTES
- DEMOLISH AND REMOVE ALL ELECTRICAL WIRING, CONDUITS, BOXES AND DEVICES ASSOCIATED WITH DEMO KITCHEN EQUIPMENT, REFER TO ARCHITECTURAL DRAWINGS FOR DEMO SCOPE.
 - PROVIDE 3/4"C-3#8 CU + 1#10 CU GND.
 - PROVIDE 3/4"C-3#12 CU + 1#12 CU GND.
 - PROVIDE 1"C-3#4 CU + 1#10 CU GND.
 - PROVIDE 1-3/4"C-3#4 CU + 1#10 CU GND.

AGENCY APPROVAL:

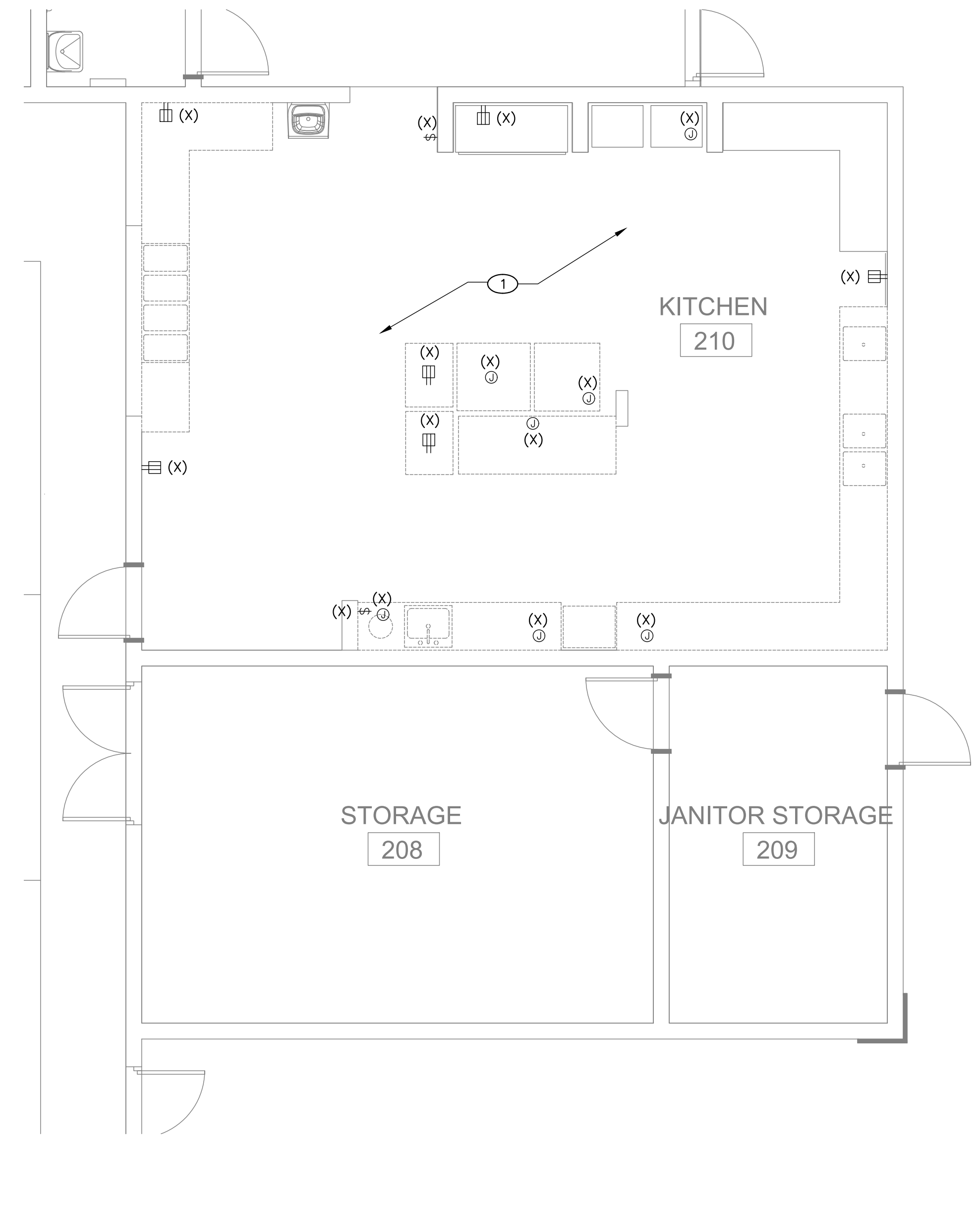


HMC Architects
 3186-070-000
 2101 CAPITOL AVENUE, SUITE 100,
 SACRAMENTO, CA, 95816
 916 368 7990 / www.hmcarchitects.com

ISSUE	DESCRIPTION	DATE
1	ADDENDUM #1	03/01/2024



ELECTRICAL IMPROVEMENT ENLARGED FLOOR PLAN - BLDG 1 KITCHEN
 2
 1/4" = 1'-0"



ELECTRICAL DEMOLITION ENLARGED FLOOR PLAN - BLDG 1 KITCHEN
 1
 1/4" = 1'-0"

- ### GENERAL NOTES
- FIELD VERIFY EXISTING CONDITIONS PRIOR TO PERFORMING WORK. NOTIFY ARCHITECT AND ENGINEER OF ANY CONFLICTS OR DISCREPANCIES.
 - PATCH, REPAIR, AND FINISH AS NECESSARY FOR ANY DAMAGES DURING DEMOLITION AND INSTALL.

FOOD SERVICE EQUIPMENT ELECTRICAL SCHEDULE

ELEC. NO.	ITEM NO.	DESCRIPTION	QTY.	VOLT. PH.	DIRECT PLUS	NEMA	LOAD			OUTLET HEIGHT	REMARKS	NOTE(S)
							WATT	AMPS DRAW	HP			
E1	1	UNHEATED AIR CURTAIN	1EA	120	1 X -	-	-	3.4	-	+86"	PROVIDE J-BOX IN WALL, INSTALL DOOR LIMIT SWITCH FOR INSTANT ON/OFF SWITCH. SEE C/FSS.2	1
E2	3	MOBILE WARMING HOLDING CABINET (OFCI)	1EA	120	1 - X	5-15P	-	12	-	+36"	PROVIDE DUPLEX RECEPTACLE, UNIT PROVIDED WITH CORD AND PLUG SET	2
E3	4	EXHAUST HOOD CONTROL POWER AND ROOM TEMPERATURE SENSOR	1EA	120	1 X -	-	-	20	-	+48"	CONNECT TO DEMANDAIRE CONTROL PANEL RECESS IN WALL REFER TO FSS.2	3 6
E4	4.1	EXHAUST HOOD FIRE SYSTEM CONTROL POWER	1EA	120	1 X -	-	-	20	-	+104"	PROVIDE J-BOX CONNECT TO UNIT ELECTRICAL CONNECTION REFER TO FSS.3 INTERCONNECTION REQUIREMENTS	
E5	4.1	FIRE SYSTEM (REMOTE PULL STATION)	1EA	-	- X -	-	-	-	-	+48"	EMPTY FLUSH MTD. OCTAGONAL BOX (REMOTE PULL) SEE FSS.3	5
E6	5	COMBI OVEN, ELECTRIC TOP AND BOTTOM UNIT REQUIREMENTS	2EA	480	3 X -	-	-	35	-	1 @ +48" 1 @ +24"	PROVIDE J-BOX CONNECT TO UNIT ELECTRICAL CONNECTION	4 7
E7	6	INDUCTION COOK TOP	1EA	240	1 - X	-	-	32	-	+48"	PROVIDE SIMPLEX RECEPTACLE UNIT PROVIDED WITH CORD AND PLUG SET	4
E8	10	HIGH TEMP WARE WASHER W/ SINGLE POINT CONNECTION	1EA	208 240	3 X -	-	-	35	-	+18"	PROVIDE J-BOX CONNECT TO UNIT ELECTRICAL CONNECTION	
E9	17.1	HOT WELLS, DRY	1EA	208	1 - X	6-20P	-	9.6	-	+18"	PROVIDE SIMPLEX RECEPTACLE PROVIDED WITH CORD AND PLUG SET	

- ELECTRICAL KEYNOTES:**
- PROVIDE 1 PLUNGER ROLLER SWITCH PER DOOR
 - CONTRACTOR TO VERIFY AND PROVIDE UTILITIES WITH SUPPLIED EQUIPMENT
 - SEE FSS.2 EXHAUST HOOD ELECTRICAL INTERCONNECTIONS REQUIREMENTS
 - PROVIDE INTERLOCK WIRING FROM FIRE PROTECTION SYSTEMS TO ELEC. SHUNT TRIP BREAKERS
 - PROVIDE EMPTY FLUSH MTD. OCTAGONAL BOX @ +48" AFF. W/ EMPTY CONDUIT TO +2" ABOVE CEILING.
 - ELECTRICAL CONTRACTOR TO PROVIDE J-BOX W/ EMPTY CONDUIT FROM +2" ABOVE CEILING IN WALL TO AMBIENT TEMPERATURE MONITOR AND HMI TOUCH SCREEN.
 - AMP DRAW REQUIREMENTS ARE ONE PER DECK. BOTTOM DECK CONNECTION @ 24" AFF TOP DECK @ 48" AFF. TWO CONNECTIONS IN TOTAL.



FACILITY:
MATSUYAMA ELEMENTARY SCHOOL
 7680 WINDBRIDGE DR.
 SACRAMENTO, CA 95831

PROJECT:
MATSUYAMA ELEMENTARY SCHOOL MODERNIZATION

SHEET NAME:
ELECTRICAL ENLARGED FLOOR PLANS - BLDG 1 KITCHEN

DSA SUBMITTAL

DATE: 01/04/2024 CLIENT PROJ NO: 3186-070-000

SHEET:

SEE THE WORK AREA FOR THE LOCATION OF THE MAIN SWITCHBOARD. SEE THE ORIGINAL PAGE FOR THE LOCATION OF THE MAIN SWITCHBOARD.

KEY NOTES

1. PROVIDE NEW BREAKER WITH ALL REQUIRED HARDWARE MATCH EXISTING BREAKERS' TYPE AND AIC RATING FOR TRANSFORMER "T-5".

AGENCY APPROVAL:



HMC Architects

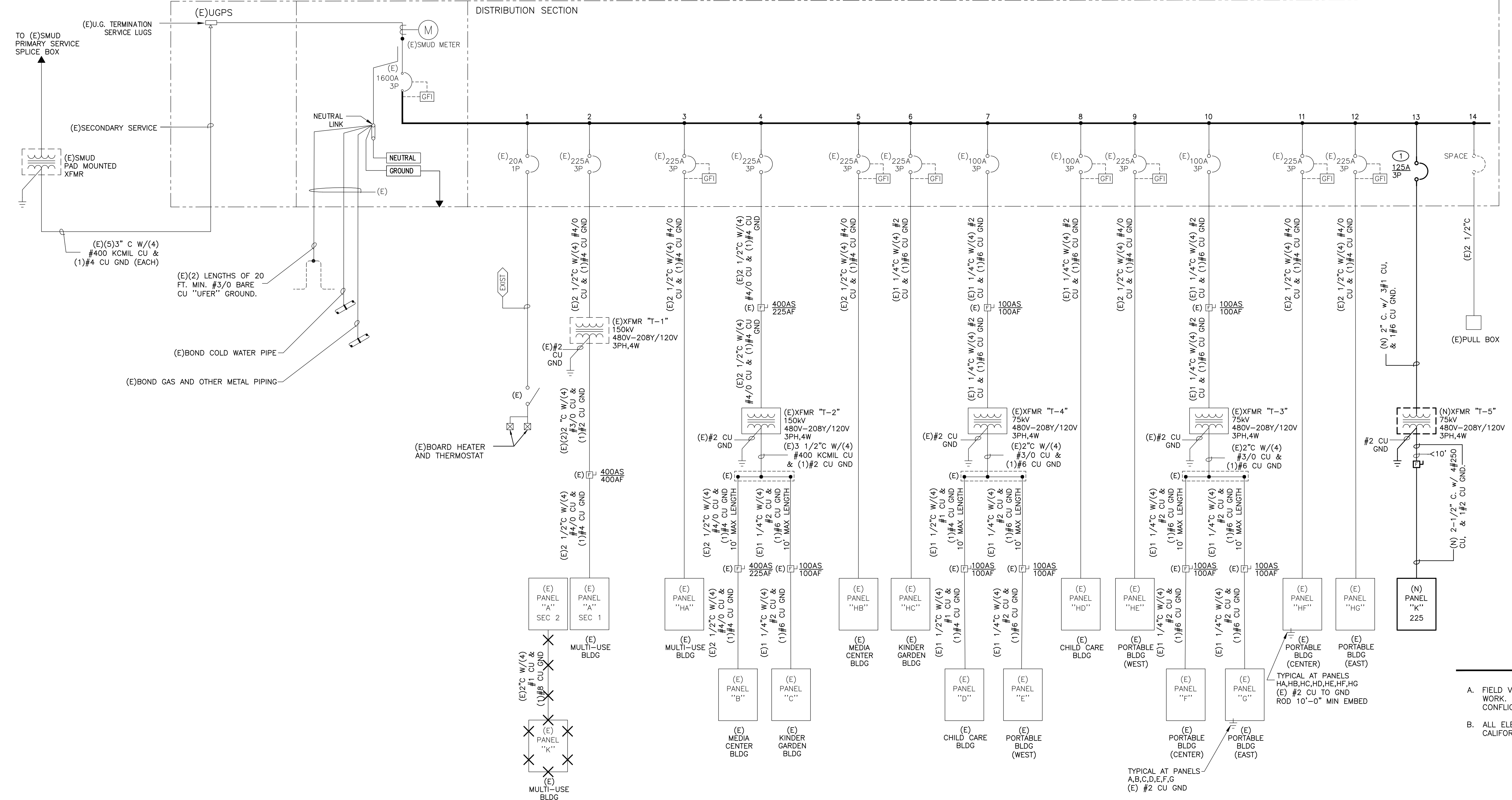
3186-070-000

2101 CAPITOL AVENUE, SUITE 100, SACRAMENTO, CA, 95816
916 368 7900 / www.hmcarchitects.com

ISSUE		DATE
1	DESCRIPTION	03/01/2024
	ADDENDUM #1	

(E) MAIN SWITCHBOARD "MSB"

NEMA-3R, 480Y/277V, 3-PH, 4-W, 1,600 AMP COPPER BUSSING, 42KAIC



GENERAL NOTES

1. FIELD VERIFY EXISTING CONDITIONS PRIOR TO PERFORMING WORK. NOTIFY ARCHITECT AND ENGINEER OF ANY CONFLICTS OR DISCREPANCIES.
2. ALL ELECTRICAL WORK SHALL COMPLY WITH 2022 CALIFORNIA ELECTRIC CODE.

EXISTING ELECTRICAL SERVICE LOAD CALCULATION

EXISTING ELECTRICAL SERVICE LOAD CALCULATION			
EXISTING MAXIMUM PEAK DEMAND LOAD FOR THE PAST 12-MONTH RECORDED IN 2023			
(SOURCE: SMUD PREVIOUS 12 MONTHS DATA)			152.0 KVA
PLUS 25% OF EXISTING CONNECTED LOAD			38.0 KVA
TOTAL EXISTING CONNECTED LOAD			= 190.0 KVA
REMOVED EXISTING LOAD			
			0.0 KVA
TOTAL LOAD REMOVED			= 0.0 KVA
TOTAL EXISTING LOAD MINUS REMOVED LOAD			= 190.0 KVA
ADD NEW LOAD			
COMBI OVEN	22.4 kVA ea	X 2	44.8 KVA
MAU-1-1	10.8 kVA ea	X 1	10.8 KVA
UNHEATED AIR CURTAIN	0.4 kVA ea	X 1	0.4 KVA
MOBILE WARMING CABINET	2.9 kVA ea	X 2	5.8 KVA
EXHAUST HOOD CONTROL	1.2 kVA ea	X 2	2.4 KVA
HOT WELLS, DRY	2.0 kVA ea	X 1	2.0 KVA
INDUCTION COOK TOP	7.7 kVA ea	X 1	7.7 KVA
HIGH TEMP WARE WASHER	19.3 kVA ea	X 1	19.3 KVA
25% OF LARGEST NEW MOTOR=	19.3 kVA @ 25% =		4.8 KVA
TOTAL ADDED LOAD			= 98.0 KVA
EXISTING AND ADDED TOTAL SERVICE LOAD			= 288.0 KVA
288.0 KVA @ 277/480 VOLT, 3 PHASE			= 347 AMPERES
THEREFORE: EXISTING MAIN 1600 AMP SERVICE HAS THE CAPACITY FOR THE NEW ADDED LOAD.			

MEP & FS / Sustainability / CxA

1209 Pleasant Grove Blvd.
Roseville, CA 95678
p 916-771-0778
www.lpenginers.com
Job #: 23-2274

FACILITY:
MATSUYAMA ELEMENTARY SCHOOL
7680 WINDBRIDGE DR.
SACRAMENTO, CA 95831

PROJECT:
MATSUYAMA ELEMENTARY SCHOOL MODERNIZATION

SHEET NAME:
ELECTRICAL ONE-LINE DIAGRAM

DSA SUBMITTAL

DATE: 01/04/2024 CLIENT PROJ NO: 3186-070-000
SHEET:

E6.01

Autodesk Docs:016807000 - SCUSD Matsuyama ES Modernization:016807000-A-MATSUYAMA-MOD.rvt
12/15/2023 2:28:53 PM

ALL WORK SHOWN ABOVE IS TO BE COMPLETED PRIOR TO THE DATE SHOWN ON THIS SHEET. ORIGINAL PAGE SIZE.

Autodesk Docs:018607000 - SCUSD Matsuyama ES Modernization:018607000-A-MATSUYAMA-MOD.rvt
 12/15/2023 2:28:53 PM

LIGHTING FIXTURE SCHEDULE					
TYPE	MANUFACTURER & CATALOG NUMBER	LUMENS	VOLTS / VA	MOUNTING	REMARKS
G4	FINELITE S17-LED - VCF - SF - 8' - H - 835	4156 LUMEN	120V / 56VA	WALL @ 10' AFG	PROVIDE WITH 90 MINUTE EMERGENCY BATTERY BACKUP WHERE MARKED AS EMERGENCY LIGHT. SEE DETAIL 2/E8.01 FOR MOUNTING DETAIL.
G5	FINELITE S17-LED - VCF - SF - 4' - H - 835	2079 LUMEN	120V / 28VA	WALL @ 10' AFG	PROVIDE WITH 90 MINUTE EMERGENCY BATTERY BACKUP WHERE MARKED AS EMERGENCY LIGHT. SEE DETAIL 2/E8.01 FOR MOUNTING DETAIL.
L4	AXIS LIGHTING STFDI-SL1-175-DSO-400-4-80-35-UNV-DP-1-CASL(##)-RC-B(##)	575 LUMEN/FOOT	UNV / 25VA	SUSPENDED	STENCIL PENDANT LED FIXTURE. PROVIDE WITH ALL NECESSARY MOUNTING ACCESSORIES. COORDINATE WITH ARCHITECT FOR CEILING TYPE AND PROVIDE THE CORRECT ACCESSORIES. SEE DETAIL 1/E8.01 FOR MOUNTING DETAIL.
L4E	AXIS LIGHTING STFDI-SL1-175-DSO-400-4-80-35-UNV-DP-1-CASL(##)-RC-B(##)	575 LUMEN/FOOT	UNV / 25VA	SUSPENDED	STENCIL PENDANT LED FIXTURE. PROVIDE WITH ALL NECESSARY MOUNTING ACCESSORIES. COORDINATE WITH ARCHITECT FOR CEILING TYPE AND PROVIDE THE CORRECT ACCESSORIES. SEE DETAIL 1/E8.01 FOR MOUNTING DETAIL.
L6	AXIS LIGHTING STFDI-SL1-175-DSO-400-6-80-35-UNV-DP-1-CASL(##)-RC-B(##)	575 LUMEN/FOOT	UNV / 37VA	SUSPENDED	STENCIL PENDANT LED FIXTURE. PROVIDE WITH ALL NECESSARY MOUNTING ACCESSORIES. COORDINATE WITH ARCHITECT FOR CEILING TYPE AND PROVIDE THE CORRECT ACCESSORIES. SEE DETAIL 1/E8.01 FOR MOUNTING DETAIL.
L8	AXIS LIGHTING STFDI-SL1-175-DSO-400-8-AL(L Hub (90°))-80-35-UNV-DP-1-CASL(##)-RC-B(##)	575 LUMEN/FOOT	UNV / 50VA	SUSPENDED	STENCIL PENDANT LED FIXTURE. PROVIDE WITH ALL NECESSARY MOUNTING ACCESSORIES. COORDINATE WITH ARCHITECT FOR CEILING TYPE AND PROVIDE THE CORRECT ACCESSORIES. SEE DETAIL 1/E8.01 FOR MOUNTING DETAIL.
S1	COOPER LIGHTING GLAN-SA2-C-740-U-T4W-PA-SPB4	14148 LUMEN	120V / 108VA	POLE @ 25' AFG	PROVIDE WITH MOTION SENSOR TO REDUCE DOWN TO 50% WHEN NO MOTION DETECTED AND 100% ONCE DETECTED MOTION AND PHOTOCELL SENSOR. PROVIDE COLOR FINISH TO MATCH EXISTING LIGHT AND POLE FINISH. SEE DETAIL 8/E8.01 FOR MOUNTING DETAIL.
X1	LITHONIA LIGHTING ECBG LED M6	LED	120V / 2.32	WALL	Exit/Unit Combos INTEGRATED EXTINGUISHING UNIVERSAL MOUNTED EXT SIGN.

- LIGHTING FIXTURE NOTES:**
- COORDINATE LIGHT FIXTURE COLORS & FINISHES WITH ARCHITECT (TYPICAL).
 - EMERGENCY LIGHT FIXTURES SHALL BE PROVIDED WITH 90-MINUTE RUNTIME INTERGRATED BATTERY PACK WITH MINIMUM. PROVIDE UNSWITCHED HOT LEG FOR TRICKLE CHARGE TO EMERGENCY BATTERY PACK.
 - EXT LIGHTS SHALL BE PROVIDED WITH WITH 90-MINUTE RUNTIME INTERGRATED BATTERY PACK. PROVIDE UNSWITCHED HOT LEG FOR TRICKLE CHARGE TO EMERGENCY BATTERY PACK.

EXISTING PANEL "A" SEC 1 [1]											
120/208 Volt, 3 Phase, 4 Wire 400 Amp BUS CU 400 Amp MCB 400 Amp MLO					10 KAIC Rating SURFACE Mounted NEMA 1 Type						
PHASE SUMMARY (WATTS)											
CKT	BKR	DESCRIPTION	A	B	C	A	B	C	DESCRIPTION	BKR	CKT
1	20/1	(E)LTG - TRACK STAGE	400			720			(E)SOUND RACK	20/1	2
3	20/1	(E)LTG - TRACK STAGE		400			1,400		(E)REC - WALL MARQUEE	20/1	4
5	20/1	(E)LTG - TRACK STAGE			400			700	(E)FOUNTAIN	20/1	6
7	20/1	(E)LTG - TRACK STAGE (FRONT)	1,000			1,200			(E)LTG - STAGE	20/1	8
9	20/1	(E)LTG - TRACK STAGE (FRONT)		1,000			900		(E)LTG - STAGE	20/1	10
11	20/1	(E)LTG - TRACK STAGE (FRONT)			1,000			200	(E)REC - STAGE DIMMING	20/1	12
13	20/1	(E)LTG - TRACK STAGE (RIGHT)	400			200			(E)REC - STAGE DIMMING	20/1	14
15	20/1	(E)LTG - TRACK STAGE (RIGHT)		400			600		(E)LTG - CONTACTOR STG RM	20/1	16
17	20/1	(E)LTG - TRACK STAGE (LEFT)			400		1,000		(E)RRR AND WATER FOUNTAIN	20/1	18
19	20/1	(E)LTG - TRACK STAGE (LEFT)	400			1,000			(E)LTG - LOBBY	20/1	20
21	20/1	(E)REC - MULTISE MICROV		1,500			1,000		(E)LTG - STG	20/1	22
23	20/1	(E)REC - MULTISE MICROV			1,000			500	(E)EXT SIGNS	20/1	24
25	20/1	(E)REC - IDF RM	540			200			(E)REC - EXTERIOR STAGE DIM	20/1	26
27	20/1	(E)EM LG - MP RM		900			200		(E)REC - EXTERIOR STAGE DIM	20/1	28
29	20/1	(E)SPARE IN MP RM CONTACTOR					700	500	(E)INVERTER EXT LG	20/1	30
31	20/1	(E)SPARE IN MP RM CONTACTOR							(E)REC - JANITOR	20/1	32
33	20/1	(E)MP RM LG CONTACTOR		1,000			100		(E)SVH	20/1	34
35	20/1	(E)EM LG - MP RM		1,500			900		(E)REC - CONV	20/1	36
37	20/1	(E)SPARE IN MP RM CONTACTOR				1,300			(E)REC - EXTERIOR STAGE	20/1	38
39	20/1	SPACE					100		(E)PROJECTOR SCREEN	20/1	40
41	20/1	(E)LTG - KITCHEN			1,300			500	(E) DRAPERY MOTOR IN MP RM	20/1	42
43		(E)PNL "A" (SEC2)	13,910								44
45		FEED-THRU LUGS		12,820							46
47											48
			PHASE TOTALS								
			A	B	C						
			13,910	12,820	14,350						

- PANEL AND CIRCUIT BREAKER NOTES:**
- MULTIPLE CIRCUITS SHARING THE SAME CONDUIT AND NEUTRAL SHALL HAVE HANDLE TIES AT BREAKERS AND WIRE IN PANEL TIES PER CEC 210.4.
 -

DEMAND LOADS	
LIGHTING / CONTINUOUS LOAD x 125%	8,875 Watts
RECEPTACLES / OTHER x 100%	61,440 Watts
LARGEST MOTOR x 25%	250 Watts
TOTAL DEMAND LOADS	70,565 Watts
TOTAL DEMAND AMPS	196 AMPS

EXISTING PANEL "A" SEC 2 [1]											
120/208 Volt, 3 Phase, 4 Wire 400 Amp BUS CU 400 Amp MCB 400 Amp MLO					10 KAIC Rating SURFACE Mounted NEMA 1 Type						
PHASE SUMMARY (WATTS)											
CKT	BKR	DESCRIPTION	A	B	C	A	B	C	DESCRIPTION	BKR	CKT
43	20/1	(E)BACKSTOP MOTOR	1,100			360			(N) REC	[2]N] 20/1	44
45	20/1	(E)BACKSTOP MOTOR		1,100					SPARE	40/1	46
47	20/1	(E)LTG - MULTUSE RM			1,000			3,033	(E)IRRIGATION PUMP	50/3	48
49	20/1	(E)LTG - MULTUSE RM	1,500								50
51	20/1	(E)LTG - MULTUSE RM		1,000			3,033				52
53	20/1	(E)LTG - MULTUSE RM			1,500			250	(E)IRRIGATION CONTROLLER	20/1	54
55	20/1	(E)LTG - MULTUSE RM	1,000				250		(E)PUMP CONTROLS	20/1	56
57	20/1	SPARE					720		(E)CHAIR LIFT	20/1	58
59	20/1	(E)HOT CABINET (FS #3)		1,200				540	(E)REF (FS #1)	20/1	60
61	20/1	(E)HOT CABINET (FS #6)	1,200					540	(E)REF (FS #1)	20/1	62
63	20/1	(E)MILK CABINET (SF #12)		600			1,700		(E)CONVENTION OVEN (FS #14)	20/1	64
65	20/1	(E)SLICER (SF #8)		1,200	1,200		1,700		(E)CONVENTION OVEN (FS #14)	20/1	66
67	20/1	(E)MIXER (SF #11)	1,200				1,667		(E)DISHWASHER (FS #2)	20/3	68
69	20/1	(E)AIR DOOR (FS #19)		1,000			1,667				70
71	20/1	(E)CASH REGISTER		360				1,667			72
73	20/1	(E)REC	360						(E)SPARE	80/3	74
75		SPACE									76
77	20/1	(E)GARBAGE DISP (FS #7)			1,200						78
79	20/1	(E)GARBAGE DISP (FS #7)	1,200					500	(E)MIXER	20/3	80
81	20/1	(E)REF 2.5 & REC SKY LTG		1,500				500			82
83	20/1	(E)LTG - HOOD				200		500			84
			PHASE TOTALS								
			A	B	C						
			13,910	12,820	14,350						

- PANEL AND CIRCUIT BREAKER NOTES:**
- MULTIPLE CIRCUITS SHARING THE SAME CONDUIT AND NEUTRAL SHALL HAVE HANDLE TIES AT BREAKERS AND WIRE IN PANEL TIES PER CEC 210.4.
 - PROVIDE NEW CIRCUIT BREAKER IN SPACE. MATCH (E) TYPE AND AIC RATING

DEMAND LOADS	
LIGHTING / CONTINUOUS LOAD x 125%	7,500 Watts
RECEPTACLES / OTHER x 100%	35,080 Watts
LARGEST MOTOR x 25%	758 Watts
TOTAL DEMAND LOADS	43,338 Watts
TOTAL DEMAND AMPS	120 AMPS

EXISTING PANEL "HA" [1]											
277/480 Volt, 3 Phase, 4 Wire 225 Amp BUS CU 225 Amp MCB 225 Amp MLO					22 KAIC Rating SURFACE Mounted NEMA 1 Type						
PHASE SUMMARY (WATTS)											
CKT	BKR	DESCRIPTION	A	B	C	A	B	C	DESCRIPTION	BKR	CKT
1	35/3	(E)AC-6	8,333			733			(E)MAU	15/3	2
3	-	-		8,333			733				4
5	-	-			8,333			733			6
7	33/3	(E)AC-7	7,100			1,333			(E)HEF	15/3	8
9	-	-		7,100			1,333				10
11	-	-			7,100			1,333			12
13	20/3	(E)AC-5	4,100			700			(E)FREEZER COMPRESSOR	15/3	14
15	-	-		4,100			700				16
17	-	-			4,100			700			18
19	[2]N] 35/3	(N)COMBI OVEN 1	7,467			500			(E)COOLER COMPRESSOR	15/3	20
21	-	-		7,467			500				22
23	-	-			7,467			500			24
25	[2]N] 35/3	(N)COMBI OVEN 2	7,467			1,000			(E)HEATER DEFROST FREEZER	15/2	26
27	-	-		7,467			1,000				28
29	-	-			7,467				SPACE	20/2	30
31	[2]N] 20/3	(MAU - 1-1	3,603						SPACE	PFB	32
33	-	-			3,603				SPACE	PFB	34
35	-	-				3,603			SPACE	PFB	36
37	PFB	SPACE							SPACE	PFB	38
39	PFB	SPACE							SPACE	PFB	40
41	PFB	SPACE							SPACE	PFB	42
			PHASE TOTALS								
			A	B	C						
			42,336	42,336	41,336						

- PANEL AND CIRCUIT BREAKER NOTES:**
- MULTIPLE CIRCUITS SHARING THE SAME CONDUIT AND NEUTRAL SHALL HAVE HANDLE TIES AT BREAKERS AND WIRE IN PANEL TIES PER CEC 210.4.
 - PROVIDE NEW CIRCUIT BREAKER IN SPACE. MATCH (E) TYPE AND AIC RATING

DEMAND LOADS	
LIGHTING / CONTINUOUS LOAD x 125%	2,500 Watts
RECEPTACLES / OTHER x 100%	124,008 Watts
LARGEST MOTOR x 25%	2,083 Watts
TOTAL DEMAND LOADS	128,591 Watts
TOTAL DEMAND AMPS	155 AMPS

NEW PANEL "K" [1]											
120/208 Volt, 3 Phase, 4 Wire 225 Amp BUS CU 225 Amp MCB Amp MLO					10 KAIC Rating SURFACE Mounted NEMA 1 Type						
PHASE SUMMARY (WATTS)											
CKT	BKR	DESCRIPTION	A	B	C	A	B	C	DESCRIPTION	BKR	CKT
1	20/1	(E)FREEZER LTG	50			2,400			(E)STEAM TABLES	30/2	2
3	20/1	(E)WASHER		850			2,400				4
5	30/2	(E)DRYER			2,400			250	(E)FAN COIL - FREEZER	15/2	6
7	-	-									8
9	30/1	(E)ELEC WATER HEATER		2,400			500		(E)FIRE ALARM	20/1	10
11	20/1	UNHEATED AIR CURTAIN			408			3,840	INDUCTION COOK TOP	50/2	12
13	20/1	MOBILE WARMING CABINET	1,440				3,840				14
15	20/1	MOBILE WARMING CABINET		1,440			6,425		HIGH TEMP WARE WASHER	60/3	16
17	20/1	EXHAUST HOOD CONTROL			1,200		6,425				18
19	20/1	EXHAUST HOOD FIRE SYSTEM CONTROL	1,200				6,425				20
21	20/2	HOT WELLS, DRY		998			720		REC KITCHEN	20/1	22
23	-	-			998			180	REC ROOF	20/1	24
25	20/1	SPACE							SPACE		26
27	20/1	SPACE							SPACE		28
29	20/1	SPACE							SPACE		30
			PHASE TOTALS								
			A	B	C						
			18,005	15,753	15,701						

- PANEL AND CIRCUIT BREAKER NOTES:**
- MULTIPLE CIRCUITS SHARING THE SAME CONDUIT AND NEUTRAL SHALL HAVE HANDLE TIES AT BREAKERS AND WIRE IN PANEL TIES PER CEC 210.4.
 -

DEMAND LOADS	
LIGHTING / CONTINUOUS LOAD x 125%	63 Watts
RECEPTACLES / OTHER x 100%	49,390 Watts
LARGEST MOTOR x 25%	213 Watts
TOTAL DEMAND LOADS	49,666 Watts
TOTAL DEMAND AMPS	138 AMPS

AGENCY APPROVAL:



HMC Architects

3186-070-000

2101 CAPITOL AVENUE, SUITE 100,
SACRAMENTO, CA, 95816
916 368 7990 / www.hmcarchitects.com

DESCRIPTION	DATE
1 ADDENDUM #1	03/01/2024

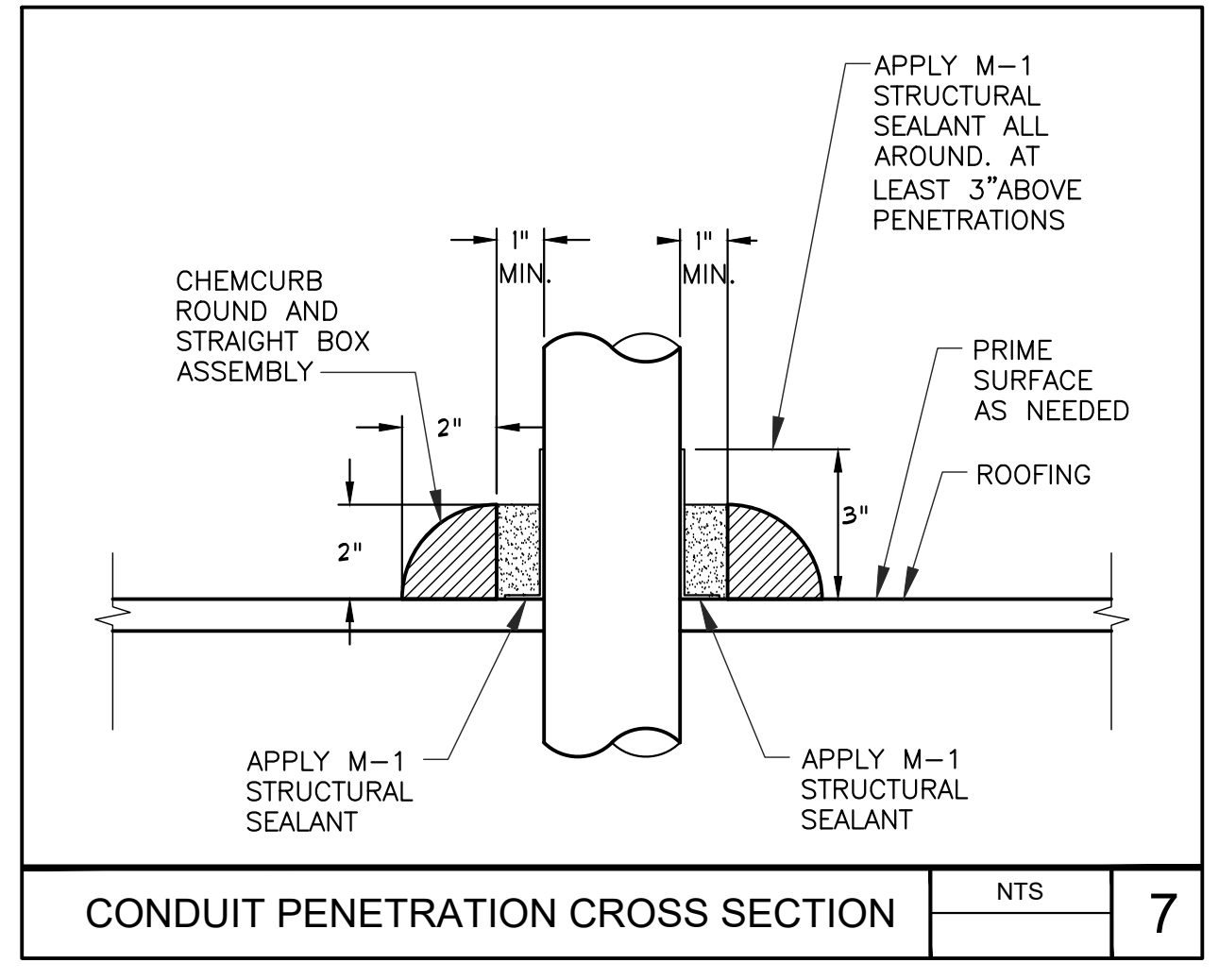
ISSUE



FACILITY:
MATSUYAMA ELEMENTARY SCHOOL
7680 WINDBRIDGE DR.
SACRAMENTO, CA 95831

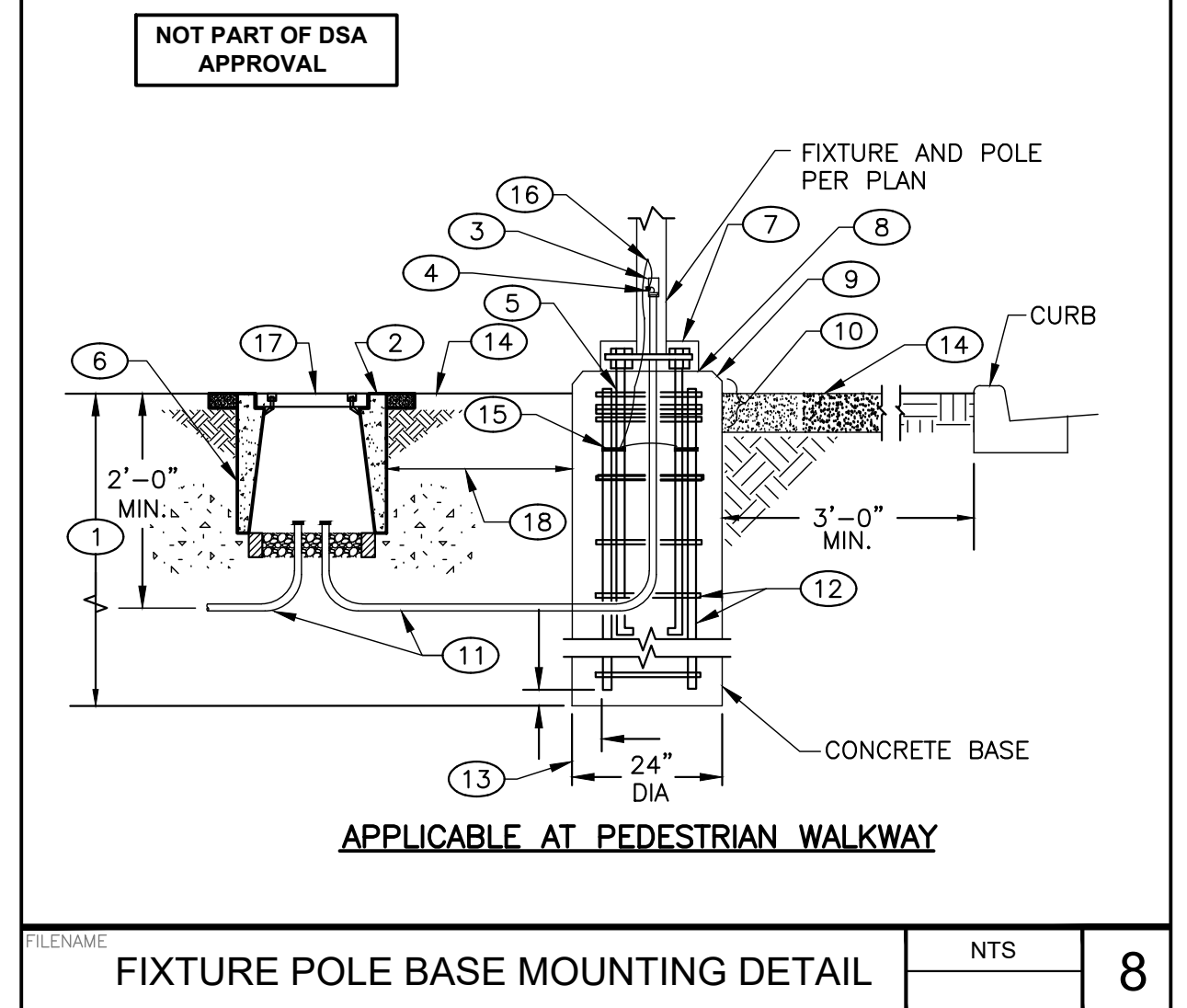
PROJECT:
MATSUYAMA ELEMENTARY SCHOOL MODERNIZATION

Autodesk Docs:016807000 - SCUSD Matsuyama ES Modernization:016807000-A-MATSUYAMA.MOD.rvt 12/15/2023 2:28:53 PM

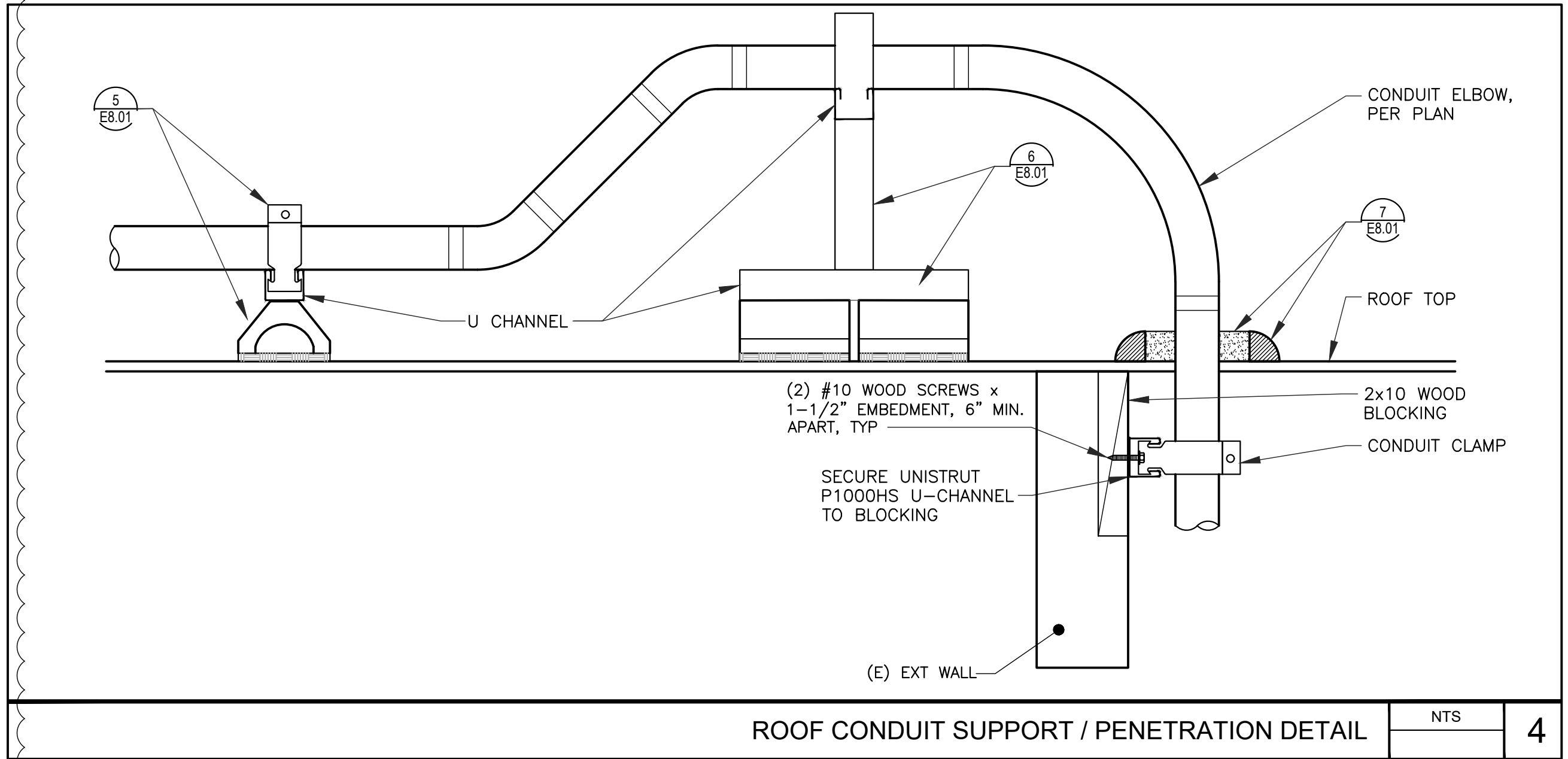


CONDUIT PENETRATION CROSS SECTION NTS 7

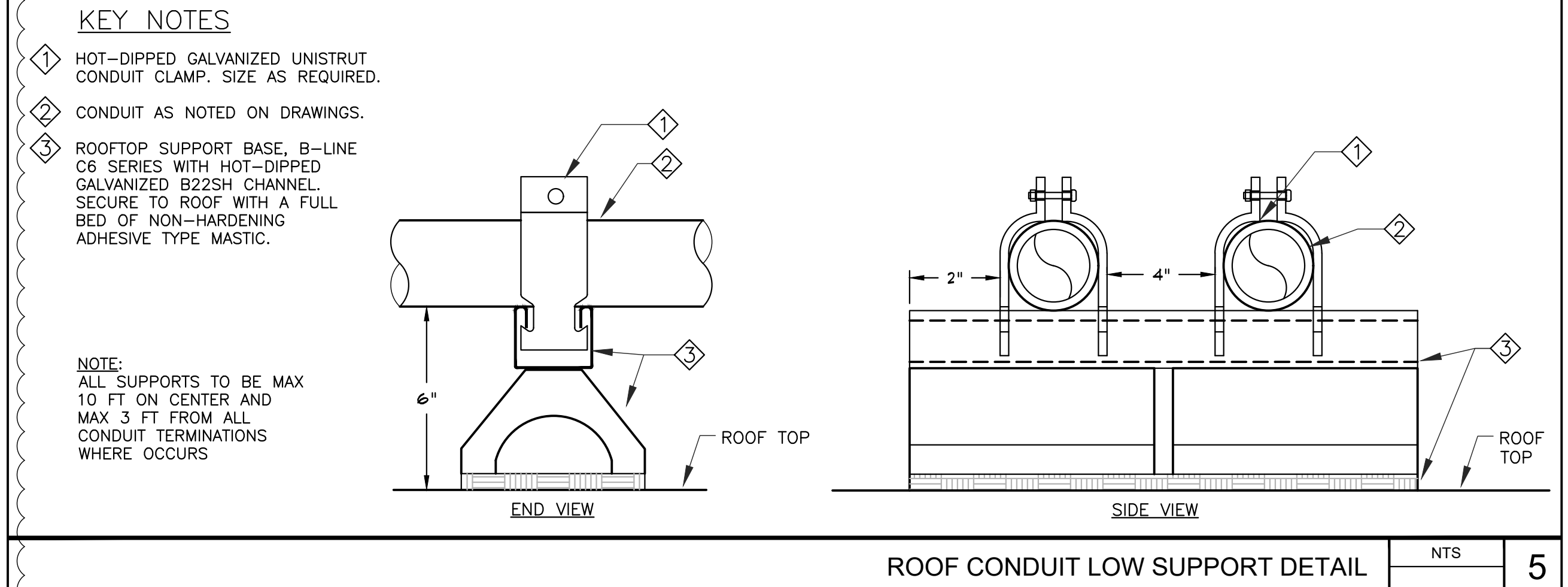
- 1 PROVIDE 48" MINIMUM FOR LIGHT POLE UP TO 25 FEET, AND 60" MINIMUM FOR LIGHT POLE UP TO 35 FEET. COORDINATE CONCRETE BASE SIZE WITH STRUCTURAL ENGINEER.
- 2 UNDERGROUND PULL BOX REQUIRED ADJACENT TO POLE BASE WHERE INDICATED ON DRAWINGS. SET TOP OF PULLBOX FLUSH WITH FINISHED GRADE.
- 3 GASKETED HANDHOLE COVER WITH TWO STAINLESS STEEL TAMPERPROOF SCREWS.
- 4 CONNECT GROUND WIRE TO GROUNDING LUG OF POLE AT HANDHOLE.
- 5 FOUR ANCHOR BOLTS, SIZE PER MANUFACTURER'S STANDARDS.
- 6 PROVIDE PULL BOX ONLY WHERE SHOWN ON PLAN.
- 7 BASECOVER, SECURE TO POLE AND/OR BASE.
- 8 PROVIDE 1 1/2" MINIMUM AND 3" MAXIMUM GROUT AROUND THE BASE AFTER PLUMB. SLOPE TO GRADE FOR DRAINAGE.
- 9 PROVIDE CONCRETE BASE WITH 1/2" CHAMFER. CONCRETE FILL AND SACK FINISH ALL CONCRETE SURFACE IMPERFECTIONS, CAVITIES AND VOIDS ABOVE FINISHED GRADE.
- 10 PROVIDE (3) #3 REBAR TIES, REINFORCE STEEL HOOPS 2" ON CENTER WITHIN TOP 5" AREA. CONDUIT PER PLAN.
- 11 PROVIDE (6) #4 REINFORCE STEEL RODS AND #3 REINFORCE STEEL HOOPS 9" ON CENTER. SIZE PER MANUFACTURER'S STANDARDS.
- 12 PROVIDE 3" CLEAR IF CAST AGAINST EARTH, TYPICAL.
- 13 FINISHED GRADE OR PAVING PER ARCHITECTURAL DRAWINGS.
- 14 UL LISTED GROUND CLAMP SUITABLE FOR CONCRETE ENCASMENT OR DIRECT BURIAL. INSTALL CLAMPS ON ALL ANCHOR BOLTS, TYPICAL.
- 15 SPLICE GROUND WIRE AND EXTEND TO GROUND CLAMP AT ANCHOR BOLT.
- 16 PROVIDE TRAFFIC BOLT-DOWN COVER.
- 17 LOCATE PULL BOX ADJACENT TO THE POLE CONCRETE BASE.



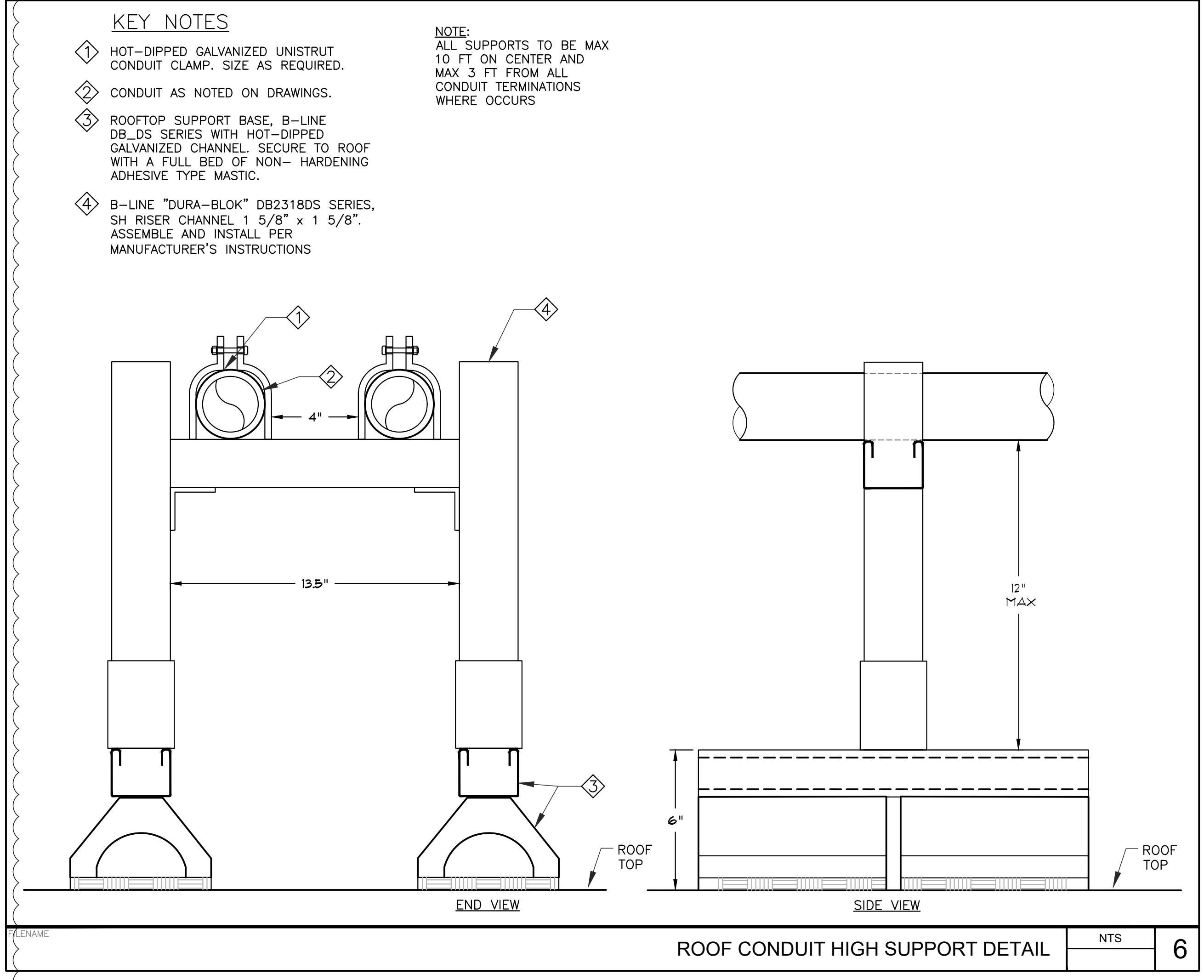
FIXTURE POLE BASE MOUNTING DETAIL NTS 8



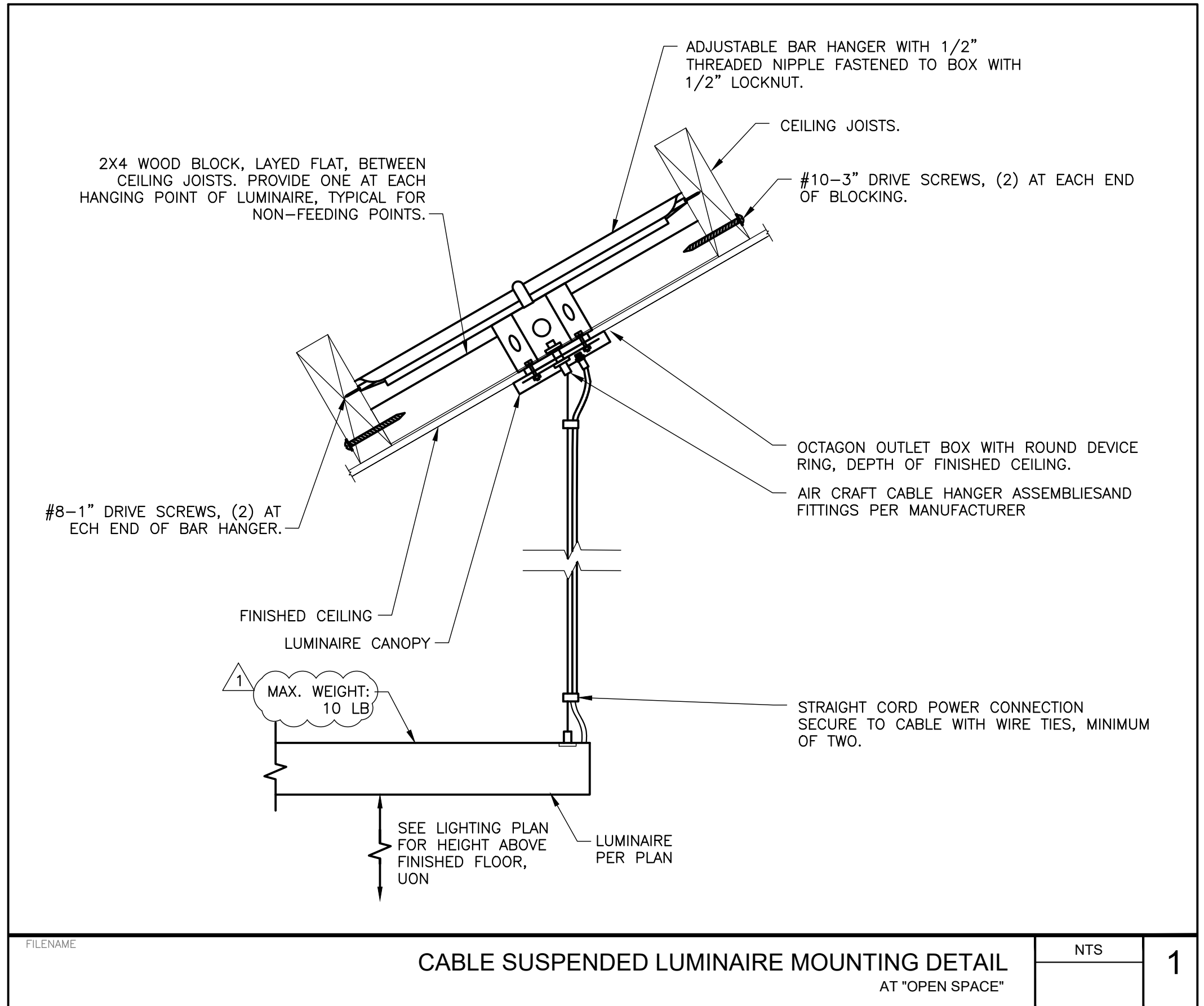
ROOF CONDUIT SUPPORT / PENETRATION DETAIL NTS 4



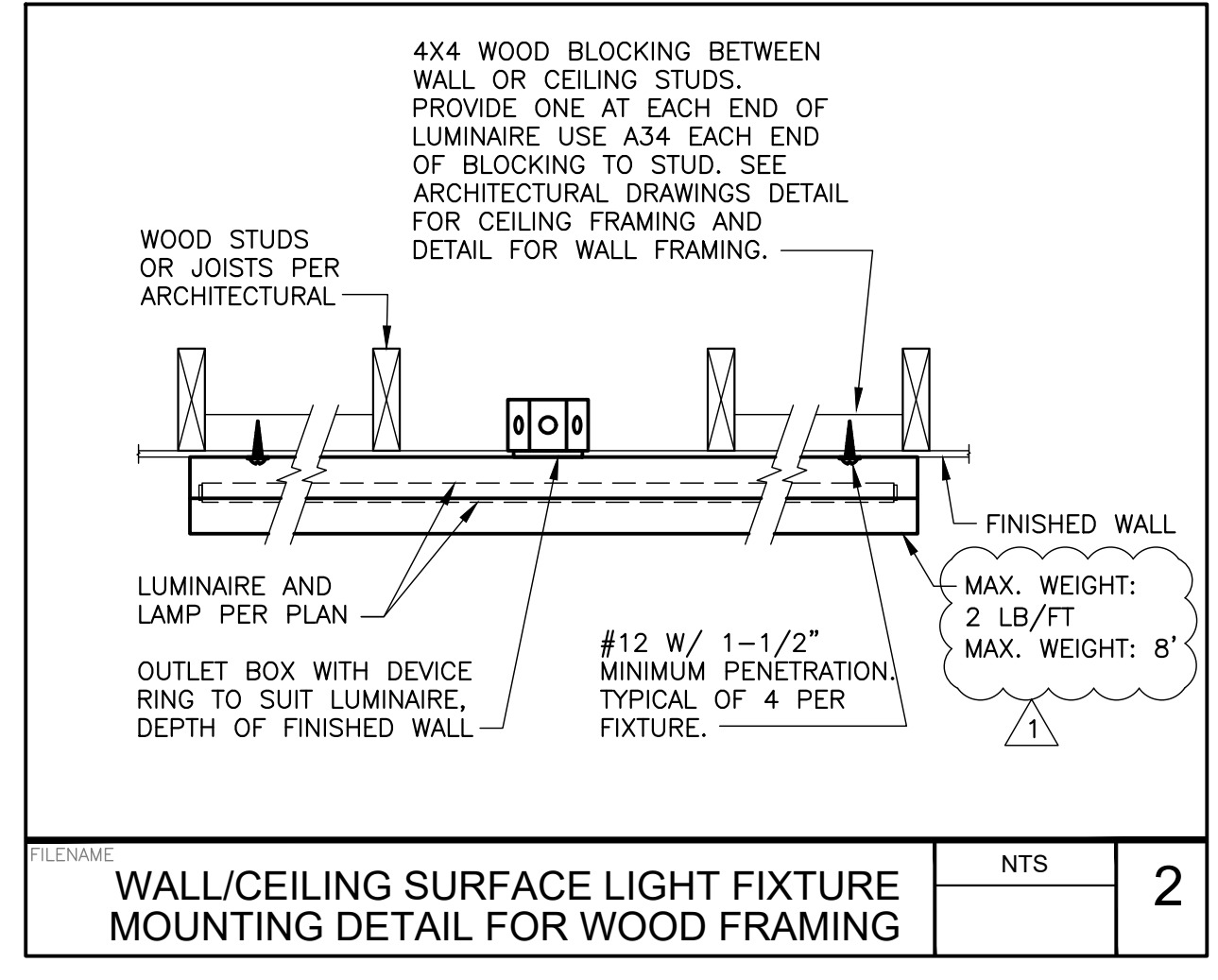
ROOF CONDUIT LOW SUPPORT DETAIL NTS 5



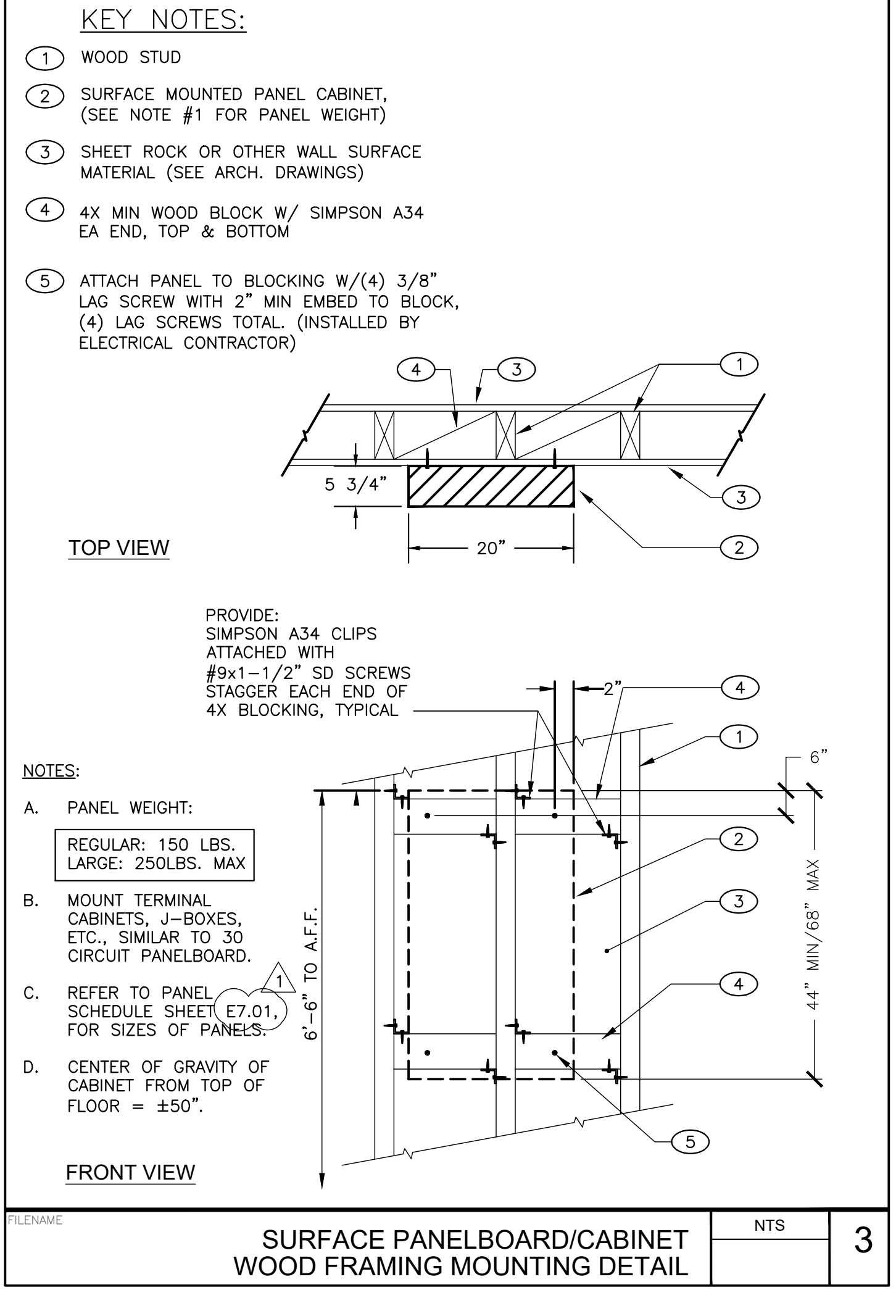
ROOF CONDUIT HIGH SUPPORT DETAIL NTS 6



CABLE SUSPENDED LUMINAIRE MOUNTING DETAIL AT 'OPEN SPACE' NTS 1



WALL/CEILING SURFACE LIGHT FIXTURE MOUNTING DETAIL FOR WOOD FRAMING NTS 2



SURFACE PANELBOARD/CABINET WOOD FRAMING MOUNTING DETAIL NTS 3

AGENCY APPROVAL:



HMC Architects

3186-070-000

2101 CAPITOL AVENUE, SUITE 100, SACRAMENTO, CA, 95816 916 368 7990 / www.hmcarchitects.com

ISSUE		DATE
1	ADDENDUM #1	03/01/2024

DESCRIPTION	DATE
ADDENDUM #1	03/01/2024



FACILITY: MATSUYAMA ELEMENTARY SCHOOL
7680 WINDBRIDGE DR. SACRAMENTO, CA 95831

PROJECT: MATSUYAMA ELEMENTARY SCHOOL MODERNIZATION

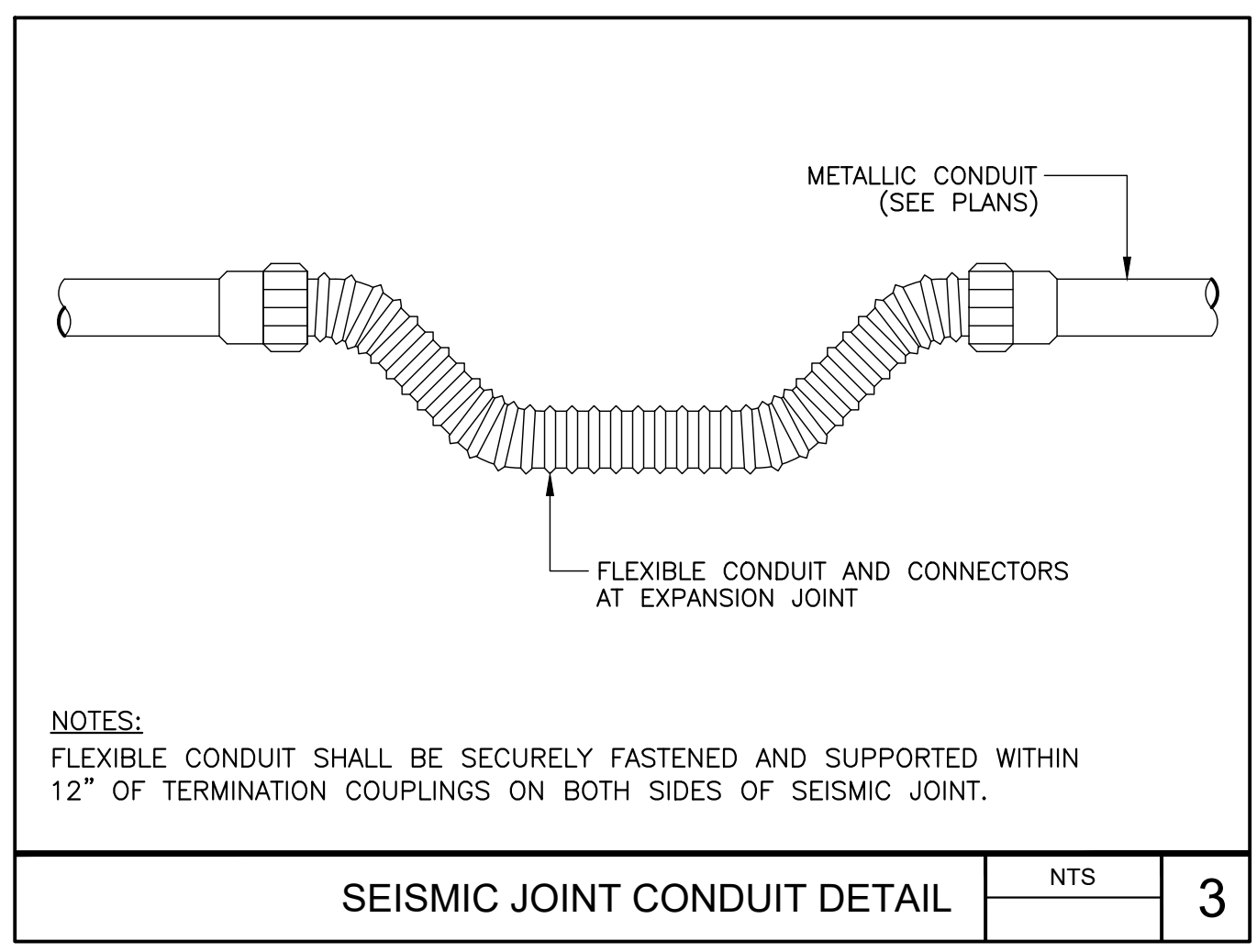
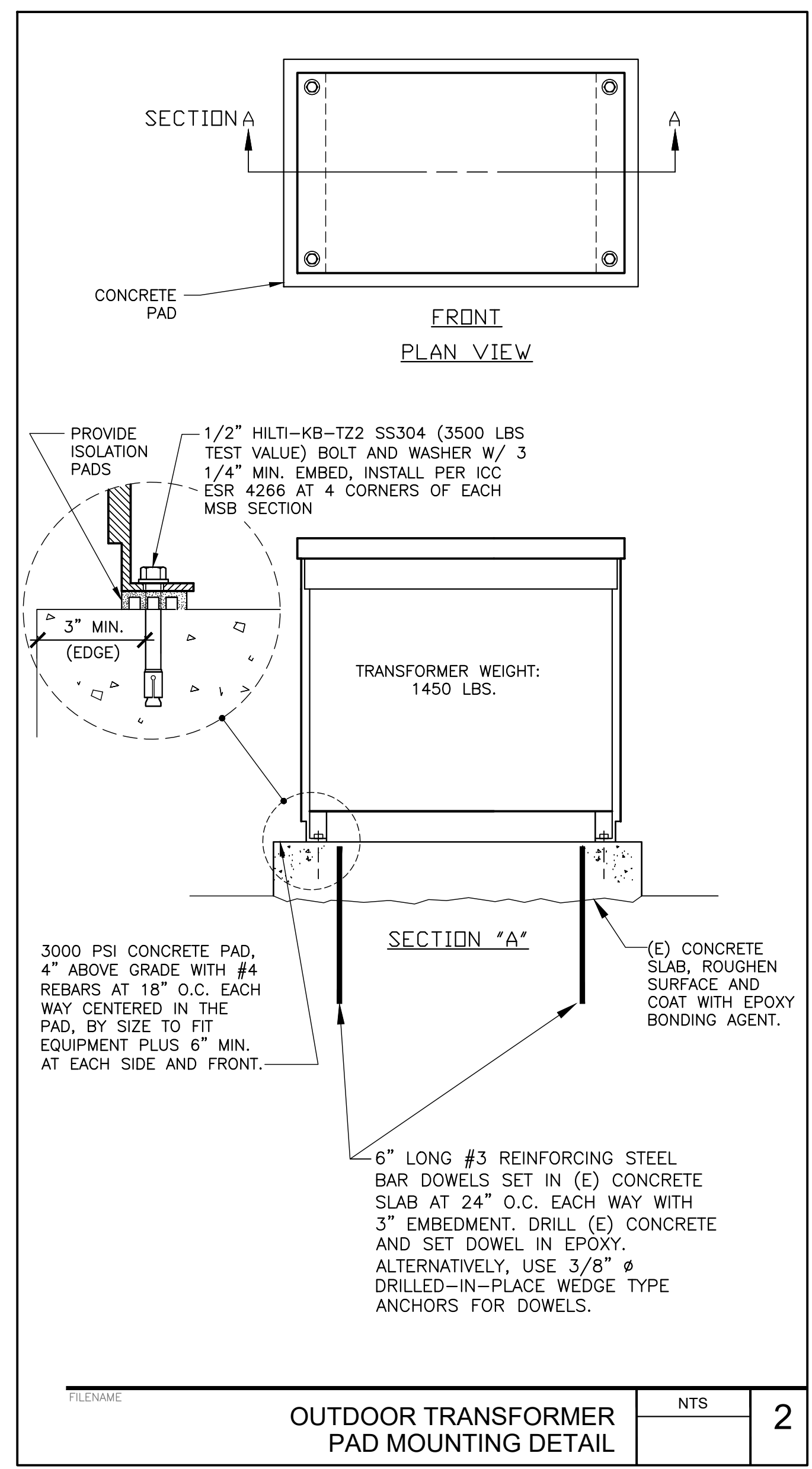
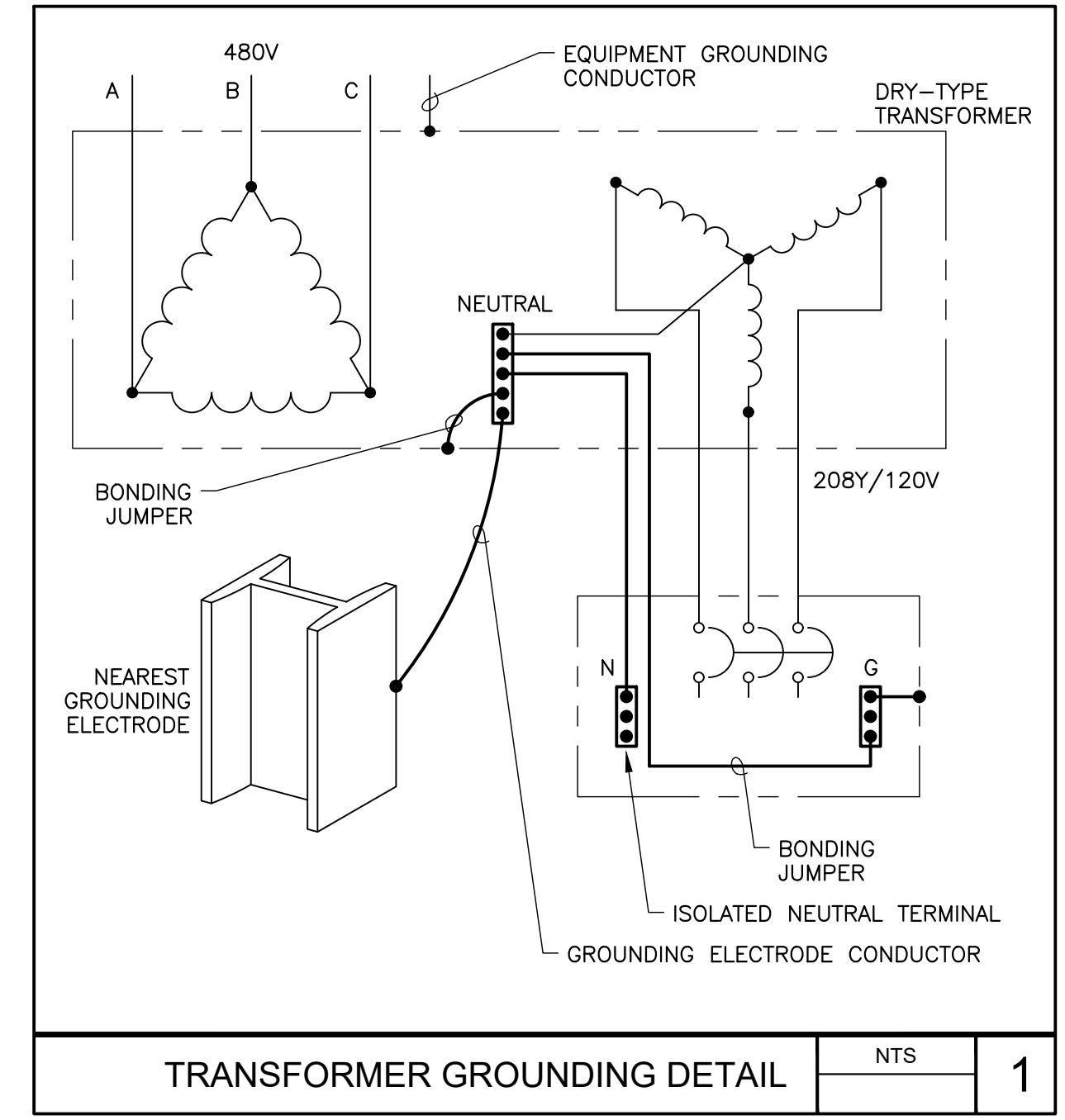
SHEET NAME: ELECTRICAL DETAILS

DSA SUBMITTAL

DATE: 01/04/2024 CLIENT PROJ NO: 3186-070-000

SHEET:

E8.01



AGENCY APPROVAL:



HMC Architects

3186-070-000

2101 CAPITOL AVENUE, SUITE 100,
 SACRAMENTO, CA, 95816
 916 368 7990 / www.hmcarchitects.com

ISSUE		DATE
1	ADDENDUM #1	03/01/2024

MEP & FS / Sustainability / CxA

1209 Pleasant Grove Blvd.
 Roseville, CA 95678
 p 916-771-0778
 www.lpeengineers.com
 Job #: 23-2274

FACILITY:
MATSUYAMA ELEMENTARY SCHOOL
 7680 WINDBRIDGE DR.
 SACRAMENTO, CA 95831

PROJECT:
MATSUYAMA ELEMENTARY SCHOOL MODERNIZATION

SHEET NAME:
ELECTRICAL DETAILS

DSA SUBMITTAL

DATE: 01/04/2024 CLIENT PROJ NO: 3186-070-000

SHEET:
E8.02